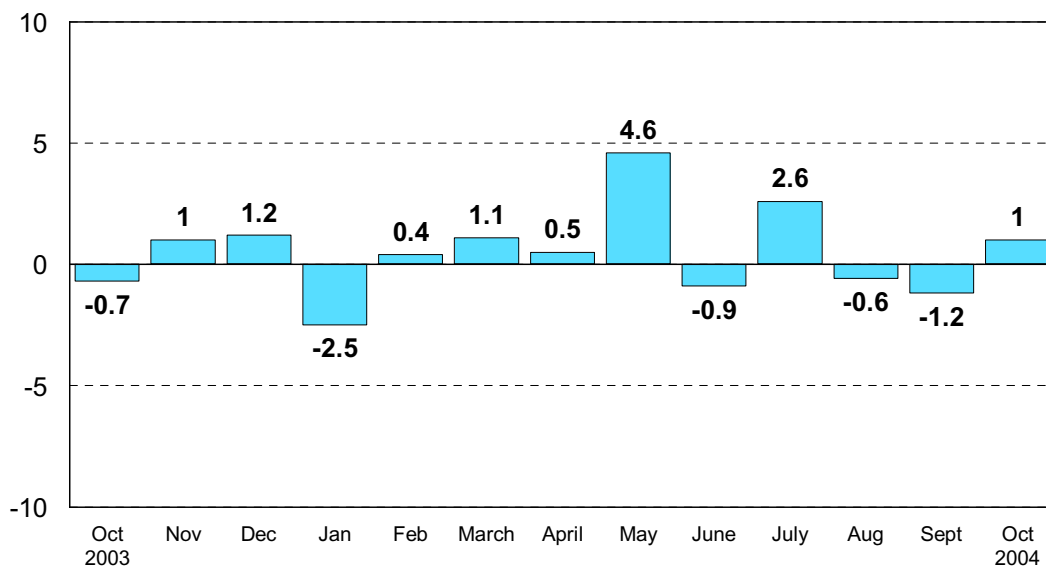


Inquiries: Mr Kari Rautio +358 9 1734 2479, [volvyymi.indeksi@stat.fi](mailto:volvyymi.indeksi@stat.fi)  
Director in charge: Mr Ilkka Hyppönen

## Industrial output grew by 1 per cent in October from September

According to Statistics Finland, seasonally adjusted industrial output was 1 per cent higher in October 2004 than in September. The original output volume grew by nearly 2 per cent from October 2003. In January to October, the original output volume increased by 3.8 per cent compared with the corresponding period of last year.

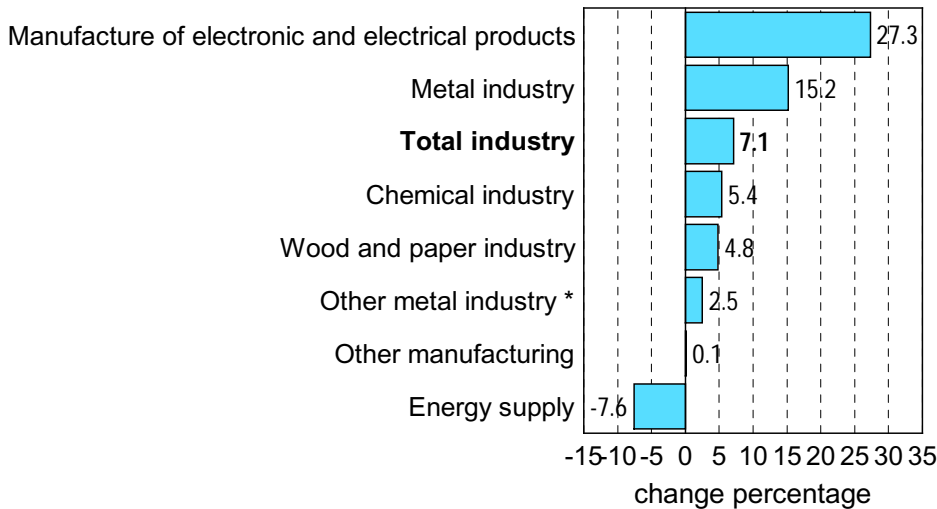
### Seasonally adjusted change in industrial output from previous month, %



## Industrial output grew by 7.1 per cent in October from last year's October

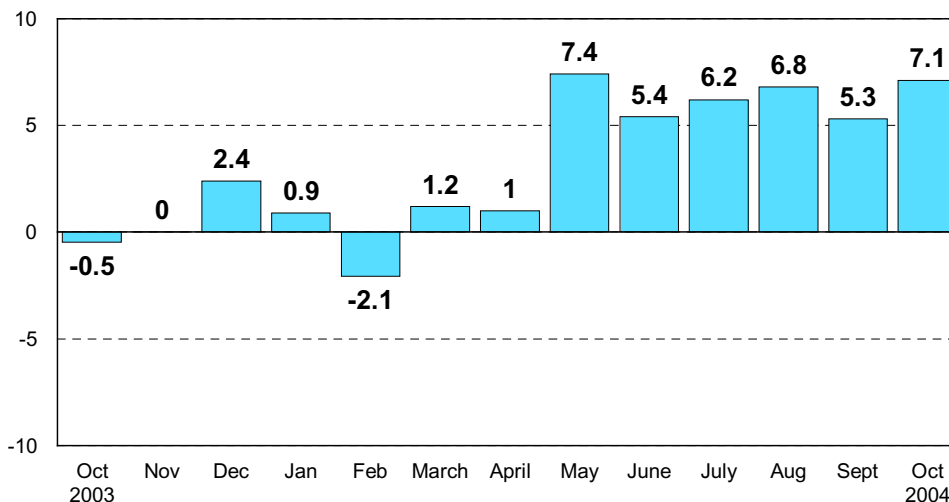
In October 2004, seasonally adjusted industrial output grew by 7.1 per cent from October 2003. Output increased most, by good 27 per cent, in the manufacture of electronic and electrical equipment. The fast rate of the electronics industry pushed the whole metal industry to a growth of good 15 per cent. Output in the chemical industry increased by over 5 per cent. In the wood and paper industry, output went up by close on 5 per cent.

## Seasonally adjusted change in industrial output 10/2003 - 10/2004, %



\*Metal industry excl. manufacture of electronic and electrical products

## Seasonally adjusted change in industrial output from corresponding month of previous year, %



Capacity utilisation rate in manufacturing was 85 per cent in October 2004, which is half a percentage point higher than in October 2003. In the pulp and paper industry capacity utilisation rate was nearly 93 per cent, in the metal industry 85 per cent. Capacity utilisation rate in both the chemical industry and in other manufacturing was 80 per cent.

Revised data for October will be published on 31 December 2004 at 8 am in connection with the industrial output data for November. Because of the method used, seasonally adjusted figures for previous months may change even if the original figures do not become revised. Seasonally adjusted figures are also adjusted for working days.

**Source: Volume Index of Industrial Output 2004, October. Statistics Finland**  
**StatFin statistical service at: [statfin.stat.fi](http://statfin.stat.fi)**