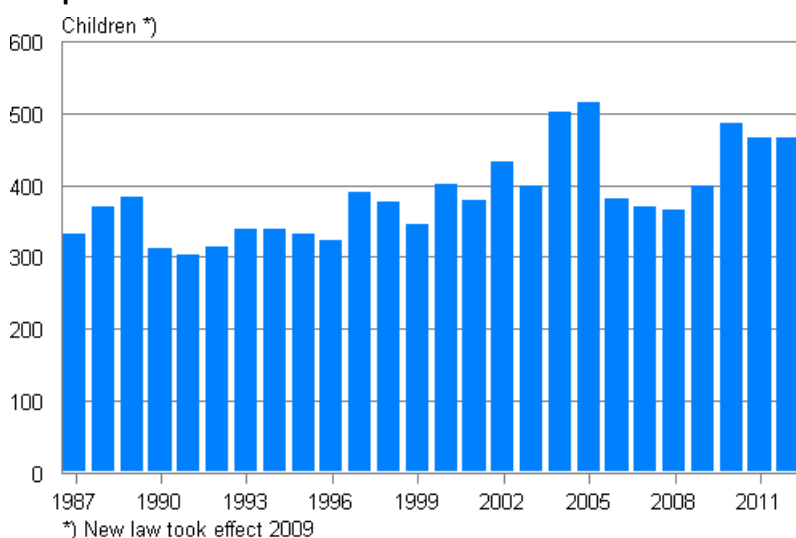


Adoptions 2012

Number of adoptions unchanged in 2012

According to Statistics Finland, adoptions in 2012 numbered 466. The figure is the same as one year earlier. The number of domestic adoptions grew only a little. Their number was 258, five more than one year before. Last year, the number of internal adoptions within families of registered same-sex partnerships remained unchanged at 91.

Adoptions in 1987–2012



There were 198 adoptions of girls and 268 adoptions of boys in Finland in 2012. Most, or 271, of the adopted persons were small children aged under five. Eighty-five were over the age of 18. Children adopted from abroad were rarely over the age of 10. In domestic adoptions, the number of over 18-year-old adopted persons was 73.

During 2012, adoptions of children born abroad to Finland numbered 208. The number was a few lower than in 2011. The largest groups in the adoptions from abroad to Finland were children born in China and South Africa. Adoptions of children born in China numbered 64 and those of children born in South Africa 32. The majority of children adopted from China were boys. The third largest group in the adoptions from abroad was children born in Russia, of whom 23 were adopted. In 2011, the largest groups in adoptions from abroad were children born in South Africa.

Four-fifths of the adoptions from abroad were made by two parents. One-third of the adoptions of children born in Finland were made by two parents. The adoptive father and mother were most typically aged 35 to 39 in adoptions from abroad by two parents.

Contents

Tables

Appendix tables

Appendix table 1. Adoptions by age of child and by birthplace 2000–2012.....	4
--	---

Figures

Appendix figures

Appendix figure 1. Adoptions of foreign born children by country of birth 2012.....	5
Appendix figure 2. Domestic adoptions 1987–2012.....	5
Appendix figure 3. Adoptions of children born abroad to Finland 1984–2012.....	5
Quality description, adoptions 2012.....	6

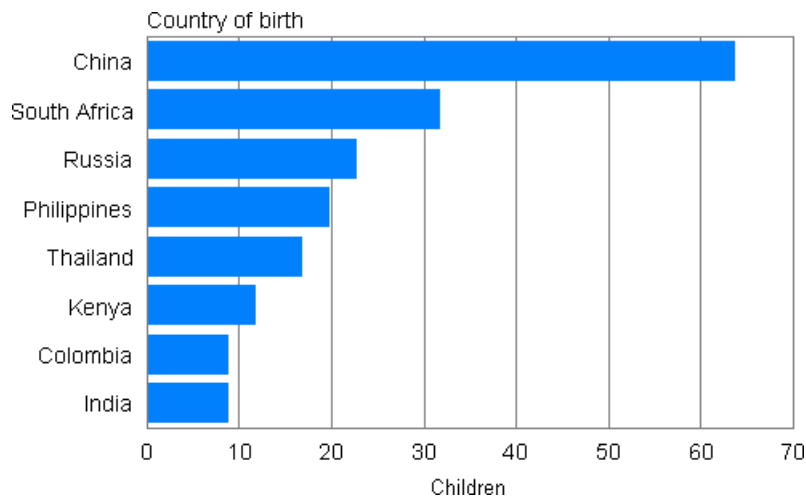
Appendix tables

Appendix table 1. Adoptions by age of child and by birthplace 2000–2012

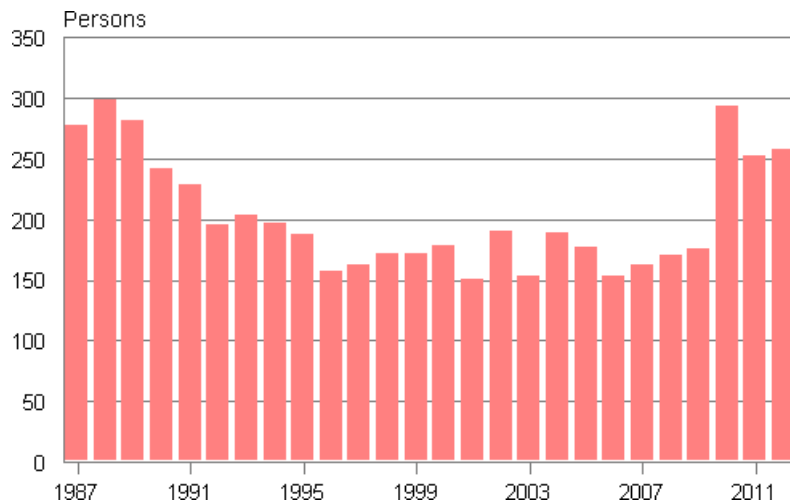
Birthplace	Age of child	Year												
		2000	2001	2002	2003	2004	2005	2006	2007	2008	2009	2010	2011	2012
Adoptions total	Agegroups total	402	379	433	400	501	515	381	370	365	400	485	465	466
	0 - 4	228	228	270	253	336	343	249	228	198	234	291	285	271
	5 - 9	70	70	43	49	49	68	45	45	54	70	90	59	75
	10 - 19	53	42	54	39	37	40	30	25	47	37	39	54	48
	20 - 39	40	34	54	52	59	51	43	61	58	46	42	54	59
	40 -	11	5	12	7	20	13	14	11	8	13	23	13	13
Finland	Agegroups total	179	151	190	154	189	177	154	163	170	176	293	253	258
	0 - 4	58	54	66	45	58	55	58	53	40	59	145	118	124
	5 - 9	30	33	22	20	23	31	20	23	33	31	58	28	39
	10 - 19	42	26	37	34	30	29	21	19	37	32	32	44	31
	20 - 39	38	33	53	48	58	49	42	57	54	41	36	50	51
	40 -	11	5	12	7	20	13	13	11	6	13	22	13	13
Born abroad	Agegroups total	223	228	243	246	312	338	227	207	195	224	192	212	208
	0 - 4	170	174	204	208	278	288	191	175	158	175	146	167	147
	5 - 9	40	37	21	29	26	37	25	22	21	39	32	31	36
	10 - 19	11	16	17	5	7	11	9	6	10	5	7	10	17
	20 - 39	2	1	1	4	1	2	1	4	4	5	6	4	8
	40 -	-	-	-	-	-	-	1	-	2	-	1	-	-

Appendix figures

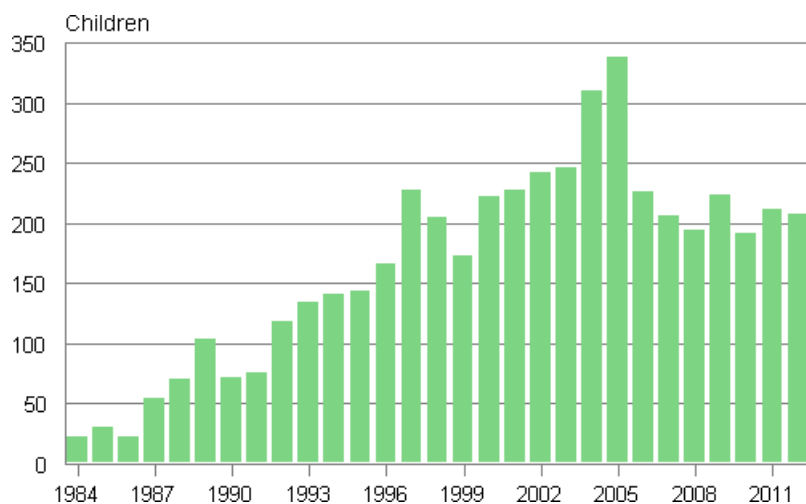
Appendix figure 1. Adoptions of foreign born children by country of birth 2012



Appendix figure 2. Domestic adoptions 1987–2012



Appendix figure 3. Adoptions of children born abroad to Finland 1984–2012



Quality description, adoptions 2012

1. Relevance of statistical information

The main source used when producing Finnish population statistics is the Population Information System of the Population Register Centre. Changes in the data on the vital events of the resident population are updated into the Population Information System continuously by local population register authorities. From 1971 Statistics Finland has obtained population data from the Population Register Centre.

The last population registration was carried out in Finland on 1 January 1989. The data stored in the Population Information System are specified in the act on Population Information System and the certificate services of the Population Register Centre (21 August 2009/661).

Statistics Finland's function is to compile statistics on conditions in society (Statistics Finland Act of 24 January 1992/48). These also include demographic statistics. Statistics Finland's Rules of Procedure defines the Population Statistics unit as the producer of demographic statistics (Statistics Finland's Rules of Procedure, TK-00-1497-12).

In accordance with the Act on the Municipality of Domicile, the municipality of domicile and the place of residence of individuals are recorded in the Population Information System. The municipality in which a person lives or the one construed by the inhabitant as the municipality of domicile on the grounds of residence, family ties, livelihood or other equivalent circumstances, or to which the inhabitant has close links due to the aforementioned circumstances is deemed the municipality of domicile. (Act on the Municipality of Domicile, 201/1994.) The population registered in the Population Information System is divided into those present and those absent. Those present are permanent residents of Finland, either Finnish nationals or aliens. Those absent are Finnish nationals who when emigrating from the country have reported that they intend to be absent from Finland for more than one year, with the exception of Finnish nationals who are diplomats and those working in development co-operation (Act on the Municipality of Domicile, 201/1994.) Only changes in the population resident in Finland on the day of the event are taken into account when compiling statistics of vital events.

Persons moving to Finland from abroad are classified in the population statistics if the place of residence they have declared as their municipality of domicile is later confirmed as their place of residence. The intend to stay in Finland for clearly more than one year is the prerequisite for registering of the foreign citizens into the population of Finland. The length of employment or studying from entry into the country or the length of employment contract must be two years for a foreign citizen to receive the right to a place of domicile if a person does not have EU citizenship. Staying in Finland for one year or more is the prerequisite for registering of the citizens of EU countries into the population of Finland if they have already lived a year in Finland. At a justified request, the information on a foreign citizen may also be entered after a short stay if he/she has, for example, a temporary place of residence in Finland as defined in the Act on the Municipality of Domicile and the entry is necessary for the realisation of rights related to employment or a similar circumstance (Act 661/2009).

Adoptions

Adoption, or acceptance as one's own child, refers to the creation of a parent-child relationship that is confirmed by a court decision and replaces the biological parent-child relationship. A new law (391/2009) took effect in September 2009 and it gave possibility to apply for adoption to her or him who lived in a registered partnership so that another partner had children. An adoption is taken into consideration in statistics when at least one of the adoptive parents is permanently resident in Finland at the time of the decision. The permanent place of residence of the adopted child at the time of the decision has no significance when cases are selected into statistics.

2. Methodological description of survey

The main source used when producing Finnish population statistics is the Population Information System of the Population Register Centre. Local register office updates a Population Information System with

information, which it gets from persons experiencing vital events and parishes of the Evangelical-Lutheran and Greek Orthodox churches. Hospitals send information of births and deaths in machine language format to the maintenance of Population Information System on a daily basis when these vital events have happened in hospitals. The Finnish Immigration Services decide mostly about the granting of Finnish citizenships (the Nationality Act 359/2003) and enters data about the decisions into the Population Information System. Local courts take information of decisions of adoptions and divorces dealt in the court into the Population Information System. Statistics Finland receives the updated data of vital events in machine-language format on a weekly basis.

The deadline for delivering data to Statistics Finland on vital events in the statistical year is the end of January of the following year. The exception to this is the data on stillbirths, which were expected by the end of August. Data on population changes in statistical year delivered to Statistics Finland after this date are included in the data of the following year.

3. Correctness and accuracy of data

In general, the Population Information System of the Population Register Centre can be considered very exhaustive as regards persons. In order that a person obtains a personal identity code, he or she has to be registered in the Population Information System. The registration is possible if he or she moves to Finland permanently or temporarily. It is practically impossible to live in Finland without a personal identity code. A personal identity code is needed so that one can work legally, open a bank account, have dealings with authorities and so on. It can be safely assumed that Finland cannot have any substantial numbers of 'moonlight workers' who receive their pay in cash for periods of over one year, for example.

After abolishment of yearly checking of domicile registers (January 1) in 1989 the Population Information System has been maintained only by notifications of changes to population information. Their correctness level is determined by a reliability survey made on the addresses in the Population Information System.

The Population Register Centre charges Statistics Finland with the task of conducting yearly a sample survey on correctness of address information. Around 11,000 people are asked whether their address in the Population Information System is correct. In the 2012 survey, the address was correct for 98.9 per cent of the respondents.

In connection with municipal elections, returned notifications of voting sent to foreigners usually reveal around 1,000 persons who have moved from the country without giving notice and are thus still included in the Finnish population. The local register office removes them from the resident population in the Population Information System before the following turn of the year.

4. Timeliness and promptness of published data

Final vital statistics are published yearly in April to May, except for those on stillbirths, which are released in September. Since 1999 the regional division used has been that of the first day of the following year. Thus the municipalities that unite on the first day of the new year are already combined in the statistics on the last day of the previous year. Information on the vital statistics of the united municipalities before the unification is available from 2003 onwards.

Preliminary statistics of population changes and population is released quarterly always at the end of the month following the previous quarter. Summary data of monthly population changes a population is released every month three weeks after the end the month. Preliminary population statistics by municipality are available by month. Monthly statistics of population changes by municipality is chargeable statistics and it is released monthly.

5. Accessibility and transparency/clarity of data

Basic population data are available in electronic form by municipality or with larger regional divisions than municipality in StatFin service in Statistics Finland's free Statistical Database on the internet.

General information and long time series on the population of the whole country can be found from the home page of Demographic Statistics at: http://tilastokeskus.fi/til/synt/tau_en.html.

The chargeable information service contains more specified information about the population by sub-area of municipality, for example.

6. Comparability of statistics

Comparable regional vital statistics series are available from 1987. The tables always indicate which regional division is used.

Vital statistics data on the numbers of births, deaths and marriages contracted are available from 1749 onwards. From 1773 there are data about mothers having given birth by five-year age group and from 1936 about all children born by age of mother. After the statistical revision of 1877 collection of data on deaths was started by one-year age group, which made it possible to begin calculation of accurate mortality and lifetime tables from the 1880s onwards. On account of this statistical revision, annual collection of data on migration and divorces was also started. In 1987-93 adoptions of Finnish born children contains some cases that are not new registrations of parental relationships but changes of heritage relationships of persons in adoption families.

7. Coherence and consistency/uniformity

Statistics Finland's other statistics use the data of demographic statistics as basic information on population. Consequently, Statistics Finland's other statistics correspond to demographic statistics.

Inquiries

Matti Saari 09 1734 3401

Director in charge:

Riitta Harala

vaesto.tilasto@stat.fi

www.stat.fi

Source: Population and Cause of Death Statistics. Statistics Finland