

Job vacancy survey

2012, 4th quarter

Fewer open job vacancies in the last quarter than one year earlier

According to the Job Vacancy Survey of Statistics Finland, there were 32,300 open job vacancies in the last quarter of 2012, which is less than one year earlier (33,500). The measurement for the last quarter was taken on 1 December. In the whole of 2012, there were, however, seven per cent more open job vacancies, on the average, than in 2011.

Job vacancies 2011/IV – 2012/IV

	Year/Quarter		Year	
	2011/IV	2012/IV	2011	2012
Job vacancies	33 500	32 300	45 600	48 600
Part-time	15 %	19 %	20 %	17 %
Fixed term	33 %	38 %	44 %	46 %
Hard-to-fill vacancies	45 %	35 %	40 %	37 %

Annual figures on job vacancies are averages of quarterly figures.

In all, 19,700, or 61 per cent, of the job vacancies in the last quarter of 2012 were in private enterprises. Compared with the quarter one year earlier, the number of job vacancies decreased especially in manufacturing, mining and other manufacturing activities (-1,100), in professional, scientific and technical activities, and in administrative and support service activities (-800), and in construction (-800), but increased in public administration and defence, education, health and social work (+2,600). Examined by area, open job vacancies went down in the Helsinki-Uusimaa region (-3,500), but grew elsewhere in the major region of Southern Finland (+2,400).

In the last quarter of 2012, the proportion of part-time vacancies among all vacancies increased by four percentage points and that of fixed-term vacancies by five percentage points from the respective quarter of the year before. Thirty-five per cent of open job vacancies were hard-to-fill, which is ten percentage points less than in the last quarter of the year before.

Statistics Finland has been collecting data on job vacancies quarterly since the beginning of 2002. The statistics are based on a sample of establishments of enterprises and general government. The data are collected with telephone interviews and web questionnaires. The statistics are decreed by a regulation of

the European Union. The objective is to produce up-to-date and comparable information about the number and structure of job openings on the labour markets of EU Member States.

The sampling method and production system of the Job Vacancy Survey are being renewed. Data based on the new method will be released on 7 June 2013. More detailed information on the changes will be published on the internet pages of job vacancies <http://www.stat.fi/til/atp/laa.html>. (in Finnish)

Contents

Tables

Appendix tables

Appendix table 1. Job vacancies by the quarters 2011/IV - 2012/IV.....	4
Appendix table 2. Job vacancies by size of the local kind of activity unit 2011/IV - 2012/IV.....	4
Appendix table 3. Job vacancies by employer sector of the local kind of activity unit 2011/IV - 2012/IV.....	4
Appendix table 4. Job vacancies by major region (2012) 2011/IV - 2012/IV.....	5
Appendix table 5. Job vacancies by industry (TOL 2008) 2011/IV - 2012/IV.....	5
Appendix table 6. Part-time vacancies by major region (2012) 2011/IV - 2012/IV.....	6
Appendix table 7. Fixed-term vacancies by major region (2012) 2011/IV - 2012/IV.....	6
Appendix table 8. Hard-to-fill vacancies by major region (2012) 2011/IV - 2012/IV.....	6

Figures

Appendix figures

Appendix figure 1. Job vacancies by the quarters.....	7
Appendix figure 2. Job vacancies by type of employment relationship	7
Appendix figure 3. Job vacancies by employer sector.....	8
Appendix figure 4. Job vacancies by size of the local kind of activity unit.....	8
Appendix figure 5. Job vacancies by major region (2012).....	9
Appendix figure 6. Job vacancies by industry (TOL 2008).....	9

Appendix tables

Appendix table 1. Job vacancies by the quarters 2011/IV - 2012/IV

	Year/Quarter					Change	Change (%)
	2011/IV	2012/I	2012/II	2012/III	2012/IV	2011/IV - 2012/IV	2011/IV - 2012/IV
Job vacancies							
Total	33 500	72 600	52 200	37 400	32 300	-1 300	-4
Unoccupied	18 000	30 500	23 800	17 500	15 500	-2 500	-14
Part-time	5 000	12 200	9 700	5 900	6 000	1 000	21
Fixed term	11 100	35 900	28 700	12 900	12 100	1 000	9
Hard to Fill	15 100	24 500	18 900	16 600	11 400	-3 700	-25

Appendix table 2. Job vacancies by size of the local kind of activity unit 2011/IV - 2012/IV

	Year/Quarter					Change	Change (%)
	2011/IV	2012/I	2012/II	2012/III	2012/IV	2011/IV - 2012/IV	2011/IV - 2012/IV
Employees							
Total	33 500	72 600	52 200	37 400	32 300	-1 300	-4
1-4 persons	6 800	16 200	10 400	9 200	5 200	-1 600	-24
5-10 persons	6 600	11 600	10 200	7 900	7 400	800	12
11-99 persons	15 600	30 000	24 600	15 300	14 000	-1 500	-10
100 or more	4 600	14 800	7 000	5 000	5 700	1 100	24

Appendix table 3. Job vacancies by employer sector of the local kind of activity unit 2011/IV - 2012/IV

	Year/Quarter					Change	Change (%)
	2011/IV	2012/I	2012/II	2012/III	2012/IV	2011/IV - 2012/IV	2011/IV - 2012/IV
Employer							
Employers total	33 500	72 600	52 200	37 400	32 300	-1 300	-4
Private enterprise	23 900	51 200	33 900	25 500	19 700	-4 200	-17
Local Government	6 000	13 900	13 400	7 300	8 600	2 600	43
Central Government	1 000	1 400	800	700	1 200	100	13
Non-Profit Organization	2 200	1 200	2 600	3 300	1 700	-500	-24
Other	400	4 900	1 500	600	1 100	700	148

Appendix table 4. Job vacancies by major region (2012) 2011/IV - 2012/IV

	Year/Quarter					Change	Change (%)
	2011/IV	2012/I	2012/II	2012/III	2012/IV	2011/IV - 2012/IV	2011/IV - 2012/IV
Major region							
Total	33 500	72 600	52 200	37 400	32 300	-1 300	-4
Helsinki-Uusimaa	13 700	24 200	19 800	13 500	10 200	-3 500	-26
Southern Finland	4 800	14 600	10 400	5 700	7 200	2 400	50
Western Finland	7 200	17 800	12 900	9 700	7 500	300	5
Northern and Eastern Finland	7 900	16 000	9 200	8 500	7 400	-500	-6

Appendix table 5. Job vacancies by industry (TOL 2008) 2011/IV - 2012/IV

	Year/Quarter					Change	Change (%)
	2011/IV	2012/I	2012/II	2012/III	2012/IV	2011/IV - 2012/IV	2011/IV - 2012/IV
Industry (TOL 2008)							
Total	33 500	72 600	52 200	37 400	32 300	-1 300	-4
A Agriculture, forestry and fishing (01–03)	500	1 200	900	700	300	-300	-47
B-E Manufacturing; Mining and quarrying and other industry (05–39)	4 200	10 900	5 000	5 500	3 000	-1 100	-28
F Construction (41–43)	1 700	3 300	4 100	2 900	900	-800	-46
G-I Wholesale and retail trade; Transportation and storage; Accommodation and food service (45–56)	7 400	21 600	13 700	7 100	7 500	100	1
J Information and communication (58–63)	1 900	3 500	1 800	2 900	1 200	-700	-36
K,L Financial and insurance activities; Real estate activities (64–68)	2 200	2 300	1 500	1 200	1 900	-300	-15
M,N Professional, scientific and technical activities; Administrative and support service activities (69–82)	4 900	8 600	8 300	5 300	4 100	-800	-16
O-Q Public administration; Education, Human health and social work activities (84–88)	8 400	14 600	15 500	8 400	11 000	2 600	32
R-S Other service activities (90–96)	2 300	6 600	1 500	3 300	2 300	0	0

Appendix table 6. Part-time vacancies by major region (2012) 2011/IV - 2012/IV

	Year/Quarter					Change	Change (%)
	2011/IV	2012/I	2012/II	2012/III	2012/IV	2011/IV - 2012/IV	2011/IV - 2012/IV
Major region							
Total	5 000	12 200	9 700	5 900	6 000	1 000	21
Helsinki-Uusimaa	2 100	2 700	3 500	2 100	1 400	-700	-33
Southern Finland	300	3 400	2 600	1 300	1 700	1 400	.
Western Finland	700	3 400	2 500	1 300	1 200	600	91
Northern and Eastern Finland	2 000	2 600	1 100	1 200	1 700	-300	-16

Appendix table 7. Fixed-term vacancies by major region (2012) 2011/IV - 2012/IV

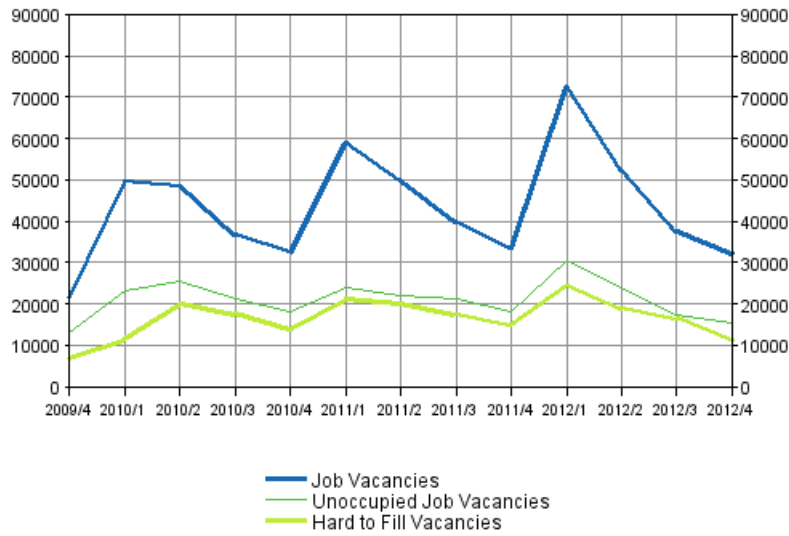
	Year/Quarter					Change	Change (%)
	2011/IV	2012/I	2012/II	2012/III	2012/IV	2011/IV - 2012/IV	2011/IV - 2012/IV
Major region							
Total	11 100	35 900	28 700	12 900	12 100	1 000	9
Helsinki-Uusimaa	2 900	9 700	9 500	3 300	3 200	300	11
Southern Finland	1 100	6 400	5 600	2 300	2 200	1 100	101
Western Finland	3 600	10 500	7 600	3 100	3 100	-500	-14
Northern and Eastern Finland	3 500	9 300	6 000	4 100	3 600	100	3

Appendix table 8. Hard-to-fill vacancies by major region (2012) 2011/IV - 2012/IV

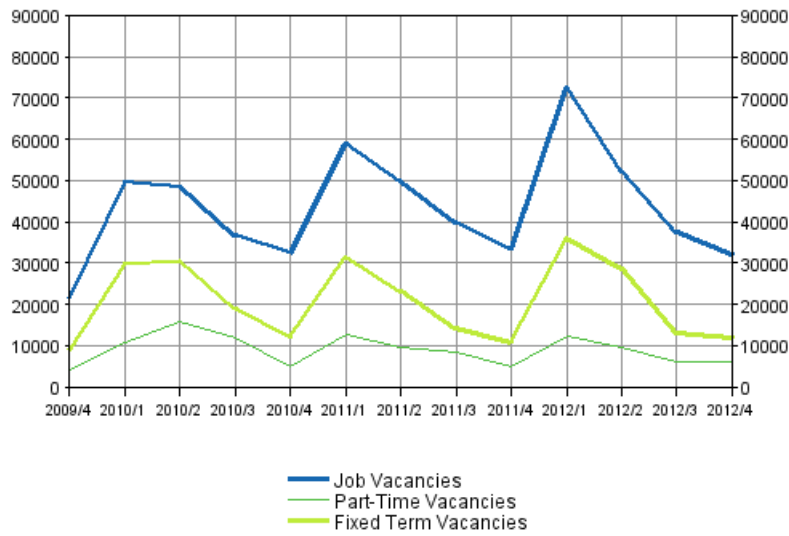
	Year/Quarter					Change	Change (%)
	2011/IV	2012/I	2012/II	2012/III	2012/IV	2011/IV - 2012/IV	2011/IV - 2012/IV
Major region							
Total	15 100	24 500	18 900	16 600	11 400	-3 700	-25
Helsinki-Uusimaa	5 800	9 600	9 100	5 900	4 100	-1 700	-29
Southern Finland	2 900	4 400	3 400	3 400	1 900	-900	-33
Western Finland	3 200	5 600	3 300	3 900	2 900	-300	-8
Northern and Eastern Finland	3 400	4 900	3 200	3 300	2 500	-900	-26

Appendix figures

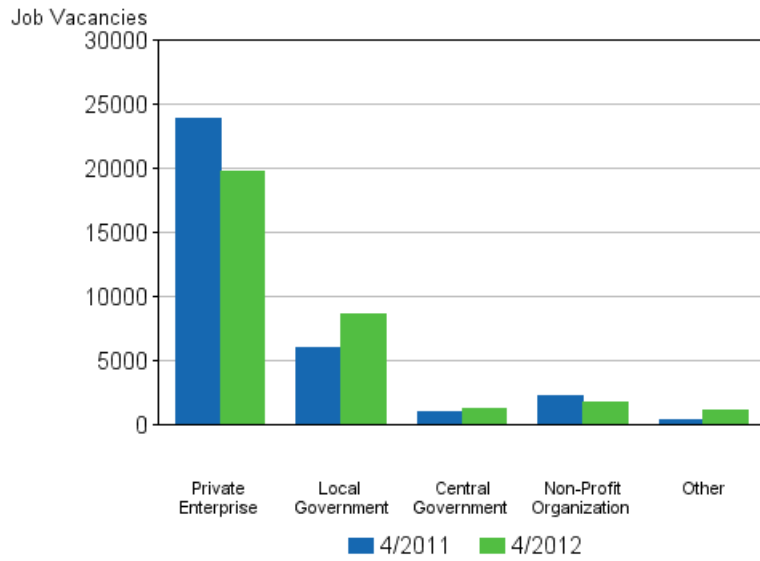
Appendix figure 1. Job vacancies by the quarters



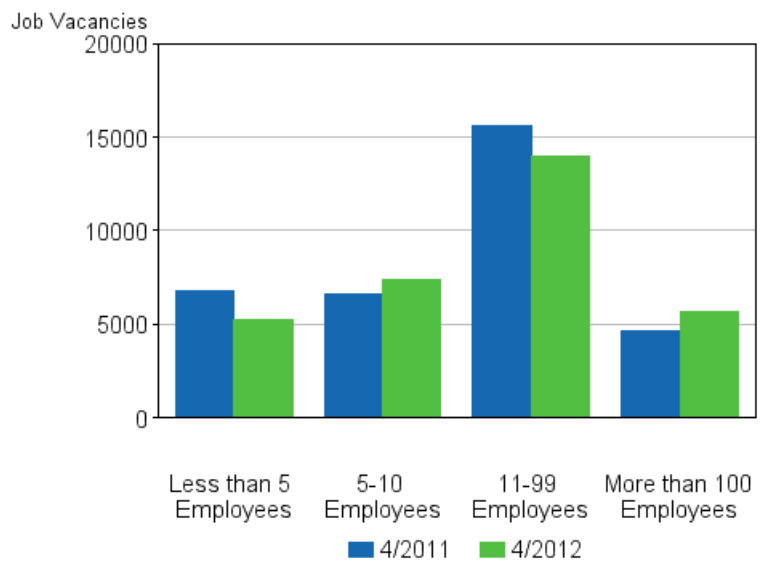
Appendix figure 2. Job vacancies by type of employment relationship



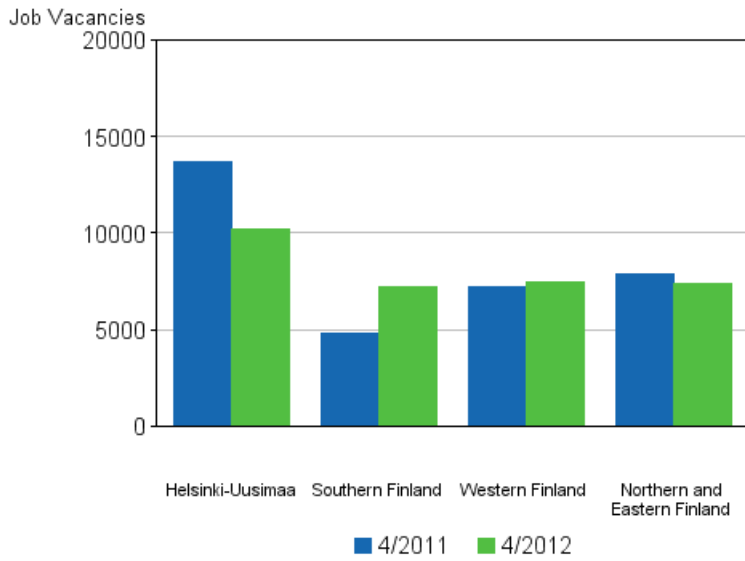
Appendix figure 3. Job vacancies by employer sector



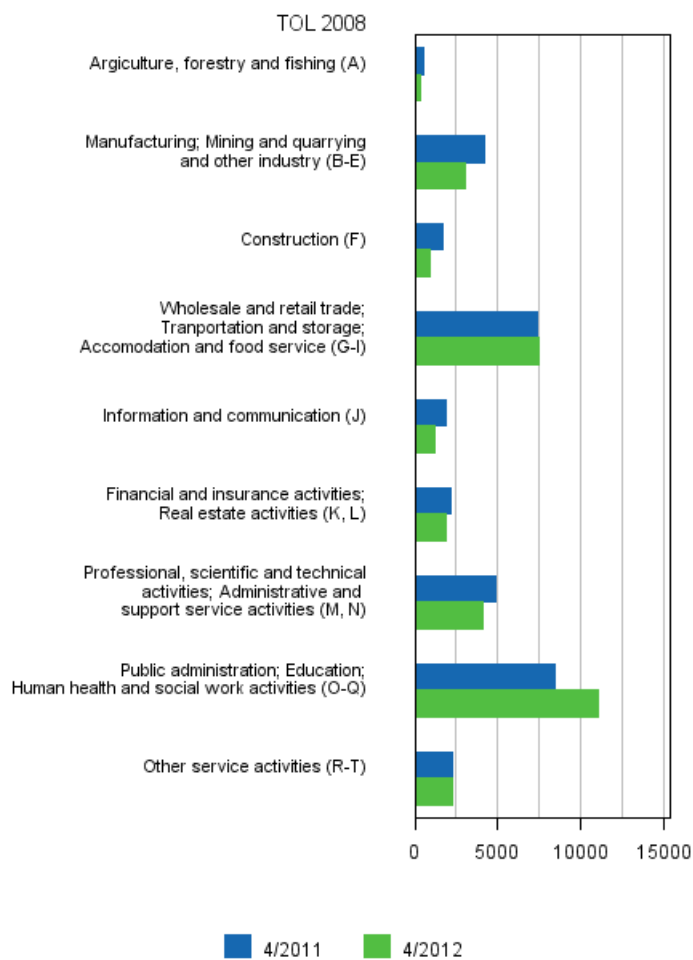
Appendix figure 4. Job vacancies by size of the local kind of activity unit



Appendix figure 5. Job vacancies by major region (2012)



Appendix figure 6. Job vacancies by industry (TOL 2008)



Suomen virallinen tilasto
Finlands officiella statistik
Official Statistics of Finland

Labour Market 2013

Inquiries

Antti Halmetoja 09 1734 3763

Director in charge:

Riitta Harala

tyovoimatutkimus@stat.fi

www.stat.fi

Source: Job vacancy survey 2012, 4th quarter. Statistics Finland.