

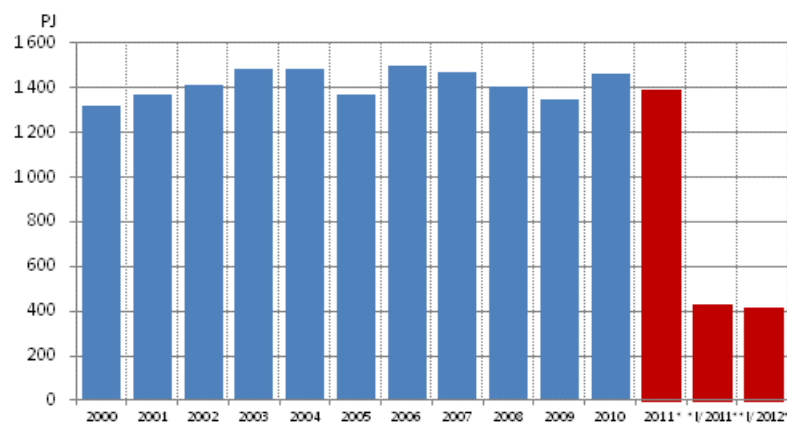
Energy supply and consumption

2012, 1st quarter

Total energy consumption fell by 3 per cent in January to March

According to Statistics Finland's preliminary data, total energy consumption in the January to March period of 2012 amounted to around 418 PJ, which was three per cent less than in the corresponding period of 2011. Total electricity consumption amounted to 24.6 TWh, which was 3.3 per cent less than one year earlier. Electricity consumption diminished mainly as the consumption of electricity in the forest industry went down by over six per cent. Carbon dioxide emissions from the production and use of energy fell by 21 per cent.

Total energy consumption, PJ



Among individual energy sources, the largest reduction of 38 per cent (around 26 PJ) was seen in the consumption of coal, while the second largest reduction of 24 per cent (approx. 12 PJ) was recorded in the consumption of natural gas. The consumption of peat fell by 22 per cent. Correspondingly, the consumption of hydro power grew by four PJ, or by nearly 44 per cent. Over one-fifth of Finland's total energy consumption was covered by wood fuels. Net imports of electricity to Finland more than doubled, which was due to growing imports of electricity from Sweden. For the first time, imports of electricity from Russia diminished by one third compared to the year before. Net imports of electricity amounted to

4.7 TWh in the first quarter of the year. Nineteen per cent of the electricity consumed in Finland was covered with imported electricity.

Domestic production of electricity went up by 15 per cent. Combined heat and power production went down by 19 per cent. Combined heat and power production decreased by 22 per cent in industry's combined power plants and by 17 per cent in district heating plants. The production of condensate power declined by 62 per cent, which was caused by replacing domestic production of electricity with Nordic electricity imports.

Diverse energy products were imported into Finland to the value of EUR 3.5 billion in the January to March period, which was six per cent up on 2011. Correspondingly, energy products were exported from Finland to the value of EUR 1.5 billion, which was 13 per cent more than one year previously. The biggest changes in the import and export values of energy products concerned medium distillates and other oil products. Stocks of coal were in March around 31 TWh, or over 80 per cent greater than one year ago.

Total energy consumption by source (TJ) and CO2 emissions (Mt)

Energy source ⁴⁾	I/2012*	Annual change-%*	Percentage share of total energy consumption*
Oil	81,874	-4	20
Coal ¹⁾	41,341	-38	10
Natural gas	39,573	-24	9
Nuclear Energy ²⁾	65,814	3	16
Net Imports of Electricity ³⁾	35,376	388	8
Hydro and Wind Power ³⁾	13,881	42	3
Peat	30,268	-22	7
Wood fuels	94,469	1	23
Others	15,305	22	4
TOTAL ENERGY CONSUMPTION	417,900	-3	100
Bunkers	7,378	-14	.
CO2 emissions from energy sector	15	-21	.

1) Coal: includes hard coal, coke, blast furnace gas and coke oven gas.

2) Conversion of electricity generation into fuel units: Nuclear power: 10.91 TJ/GWh (33% total efficiency)

3) Conversion of electricity generation into fuel units: Hydro power, wind power and net imports of electricity: 3.6 TJ/GWh (100%)

4) *Preliminary

Contents

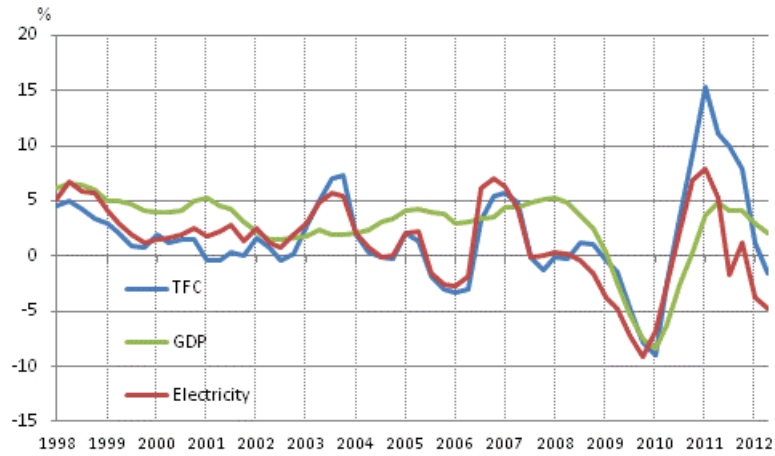
Figures

Appendix figures

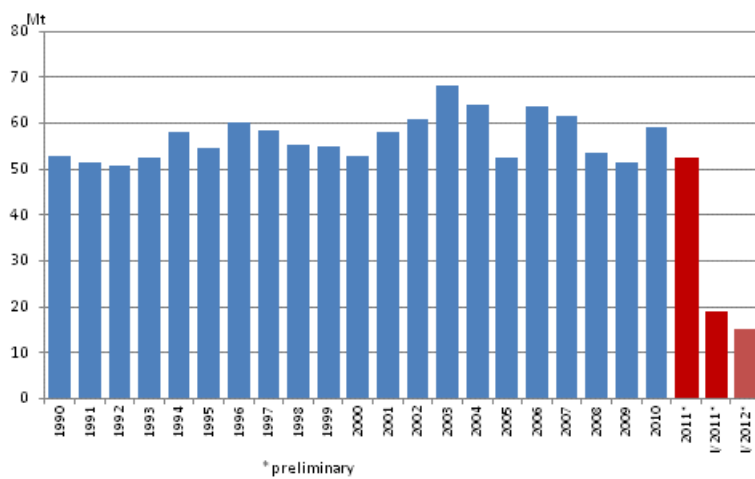
Appendix figure 1. Changes in GDP, Final energy consumption and electricity consumption.....	4
Appendix figure 2. Carbon dioxide emissions from fossil fuels and peat use	4
Appendix figure 3. Coal consumption	5
Appendix figure 4. Consumption of natural gas	5
Appendix figure 5. Peat consumption.....	5
Appendix figure 6. Domestic oil deliveries.....	6

Appendix figures

Appendix figure 1. Changes in GDP, Final energy consumption and electricity consumption

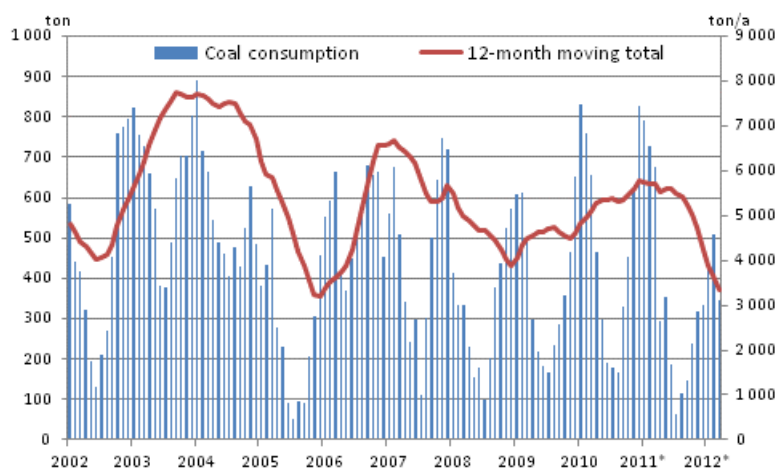


Appendix figure 2. Carbon dioxide emissions from fossil fuels and peat use



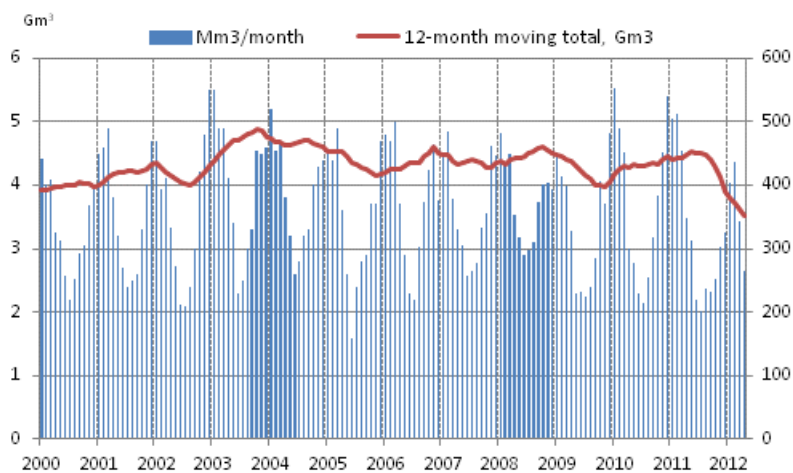
Source: Statistics Finland, 12-month moving total

Appendix figure 3. Coal consumption



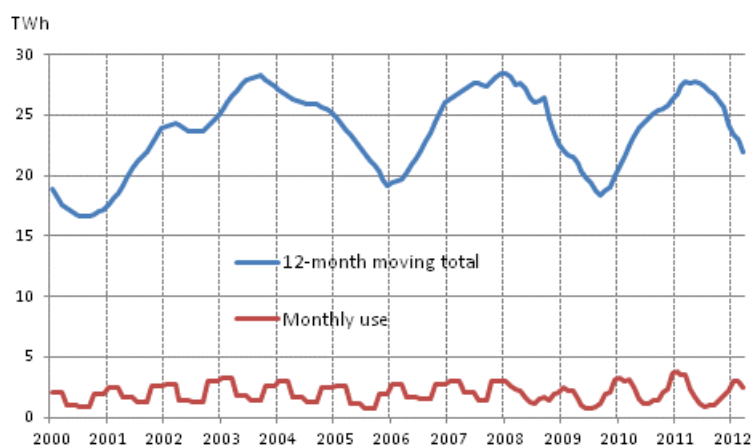
Source: Statistics Finland, Finnish Energy Industries Federation, 12-month moving total

Appendix figure 4. Consumption of natural gas



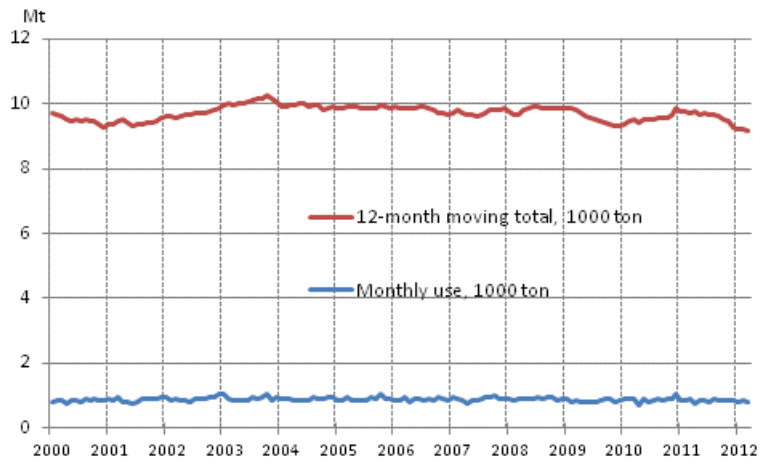
Source: Finnish Petroleum Federation, 12-month moving total

Appendix figure 5. Peat consumption



Source: Association of Finnish Peat Industries 12-month moving total

Appendix figure 6. Domestic oil deliveries



Source: Finnish Petroleum Federation, 12-month moving total

Inquiries

Pentti Wanhatalo 09 1734 2685

Director in charge:

Leena Storgårds

energia@stat.fi

www.stat.fi

Source: Statistics Finland, Energy supply and consumption