

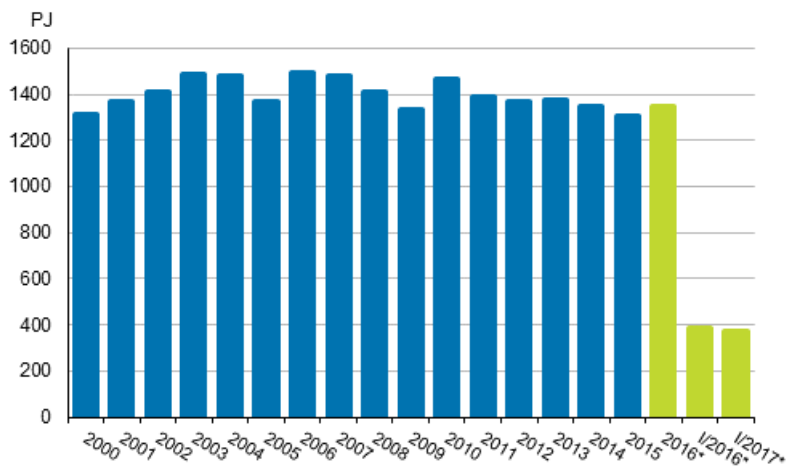
Energy supply and consumption

2017, 1st quarter

Total energy consumption fell by 4 per cent in January to March

According to Statistics Finland's preliminary data, total energy consumption in January to March amounted to 373 petajoule (PJ), which was four per cent less than in the corresponding period in 2016. Electricity consumption amounted to 24 terawatt hours (TWh), or three per cent lower than one year earlier. Carbon dioxide emissions of the energy sector declined by eight per cent year-on-year.

Total energy consumption



*preliminary

Among fuels, the consumption of coal decreased most, by 13 per cent. The consumption of natural gas went down by 12 per cent, and that of peat by nine per cent. The consumption of oil fell by two per cent. The consumption of wood fuels remained at last year's level.

The volume of electricity produced with hydro power was 24 per cent lower than in January to March 2016. Net imports of electricity remained at last year's level and its share in total electricity consumption was 22 per cent. The volume of electricity produced with wind power more than doubled.

In January to March, diverse energy products were imported into Finland to the value of EUR 2.3 billion, which was 46 per cent more than one year earlier. Most energy products were imported from Russia, whose share of the value of imports was 65 per cent. Energy products were exported to the value of EUR 1.1 billion, which was 52 per cent more than one year previously. Most energy products were exported from Finland to EU countries, which accounted for 82 per cent of the value of exports.

Stocks of coal amounted to 14 TWh at the end of March, which was 30 per cent less than one year earlier. At the end of March, it was estimated that the peat stocks contained 10 TWh of energy peat, or 19 per cent less than one year earlier.

Total energy consumption by source (TJ) and CO2 emissions (Mt)

Energy source	I/2017*	Annual change-%*	Percentage share of total energy consumption*
Oil ¹⁾¹⁾	75,146	-2	20
Coal ²⁾	35,498	-13	10
Natural gas ³⁾	26,010	-12	7
Nuclear Energy ⁴⁾	64,646	-2	17
Net Imports of Electricity ⁵⁾	19,080	0	5
Hydro power ⁵⁾	11,597	-24	3
Wind power ⁵⁾	4,766	97	1
Peat	20,349	-9	6
Wood fuels	98,672	0	27
Others ⁶⁾	17,039	-13	5
TOTAL ENERGY CONSUMPTION	372,802	-4	100
Bunkers	10,156	6	.
CO2 emissions from energy sector	12	-8	.

* = Preliminary data

. = Category not applicable

1) Oil: includes the bio part of transport fuels.

2) Coal: includes hard coal, coke, blast furnace gas and coke oven gas.

3) The consumption of natural gas does not include raw material use.

4) Conversion of electricity generation into fuel units: Nuclear power: 10.91 TJ/GWh (33% total efficiency)

5) Conversion of electricity generation into fuel units: Hydro power, wind power and net imports of electricity: 3.6 TJ/GWh (100%)

6) Others: includes exothermic heat from industry, recovered fuels, heat pumps, hydrogen, biogas, other bioenergy and solar energy.

Contents

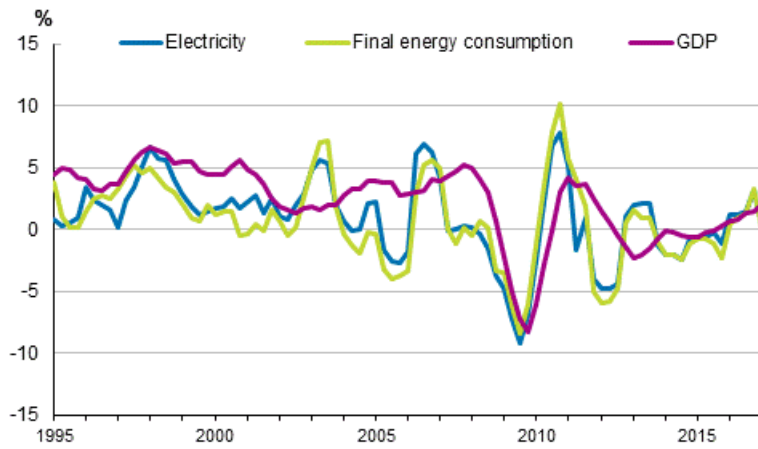
Figures

Appendix figures

Appendix figure 1. Changes in GDP, Final energy consumption and electricity consumption.....	4
Appendix figure 2. Carbon dioxide emissions from fossil fuels and peat use	4
Appendix figure 3. Hard coal consumption	5
Appendix figure 4. Consumption of natural gas	5
Appendix figure 5. Energy peat consumption.....	5
Appendix figure 6. Domestic oil deliveries.....	6
Revisions in these statistics.....	7

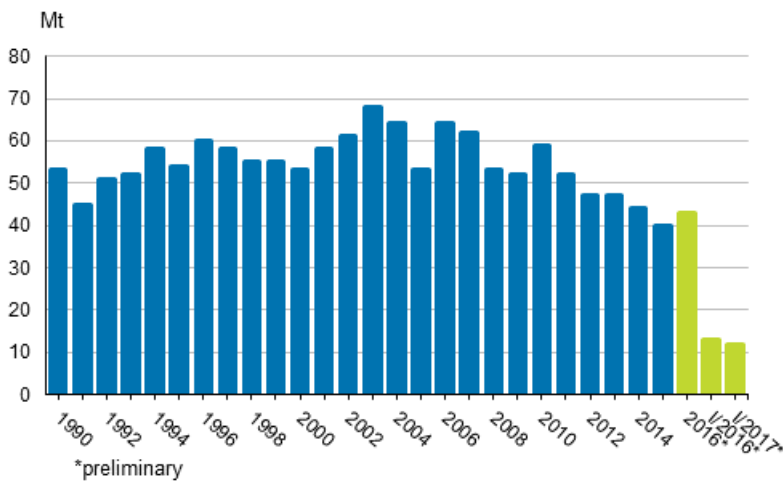
Appendix figures

Appendix figure 1. Changes in GDP, Final energy consumption and electricity consumption



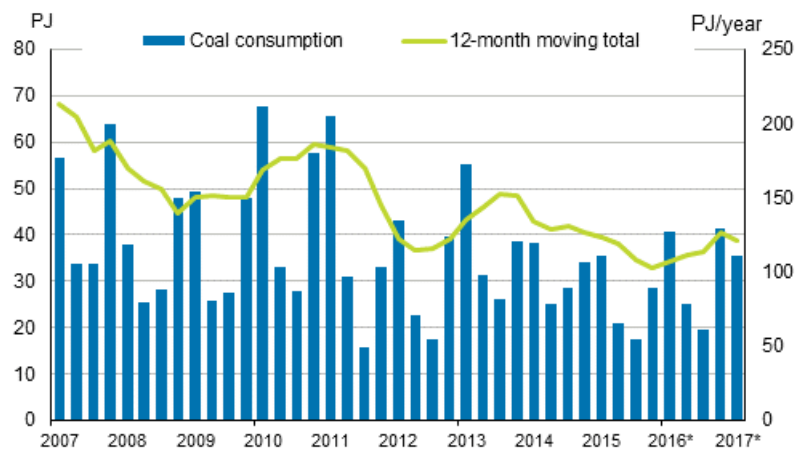
*preliminary, 12-month moving total

Appendix figure 2. Carbon dioxide emissions from fossil fuels and peat use



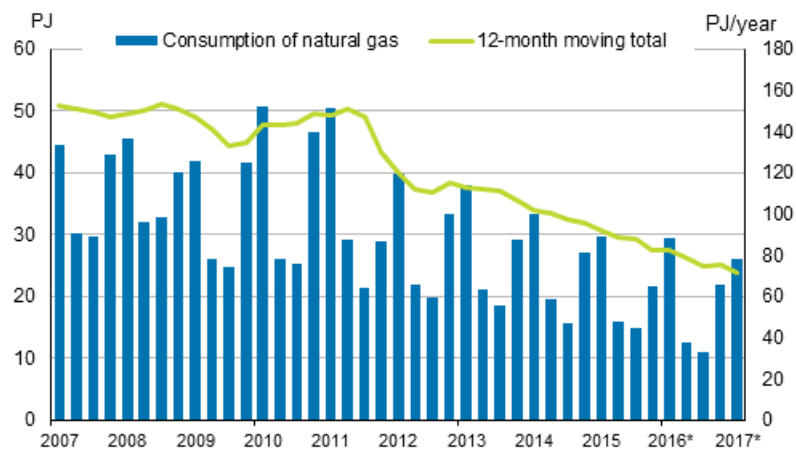
*preliminary

Appendix figure 3. Hard coal consumption



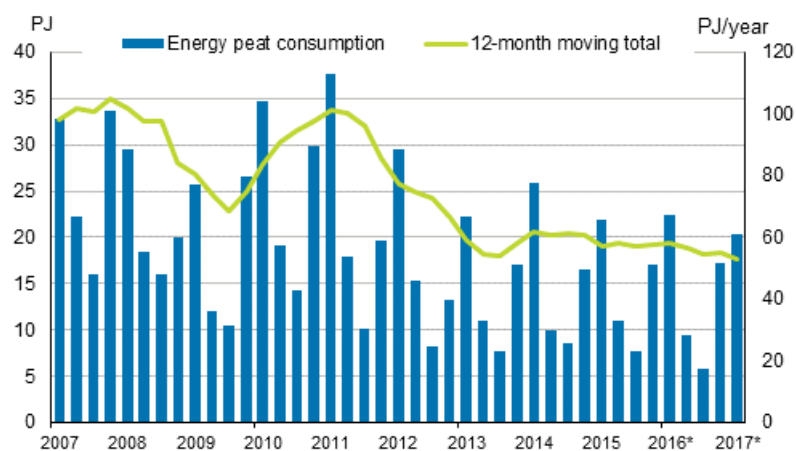
*preliminary

Appendix figure 4. Consumption of natural gas



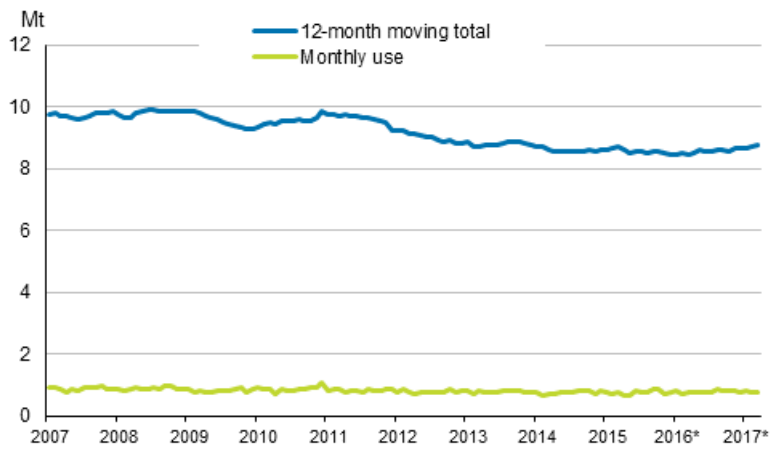
Source: Gasum, * preliminary

Appendix figure 5. Energy peat consumption



Source: The Bioenergy Association of Finland/Association of Finnish Peat Industries, *preliminary

Appendix figure 6. Domestic oil deliveries



Source: Finnish Petroleum and Biofuels Association, *preliminary

Revisions in these statistics

The data of the statistics have become revised according to the table below. For more information about data revisions, see Section 3 of the quality description (only in Finnish).

Revisions to data on annual changes in total energy consumption¹⁾

Total energy consumption and quarter	Annual change (%)		Revision (%-point)
	1st release (%)	Latest release 21st June 2017 (%)	
I-IV 2016	2	3	1
I/2016	5	6	1
II/2016	2	1	-1
III/2016	2	0	-2
IV/2016	4	5	1
I/2017	.	-4	.

. = Category not applicable

1) The revisions describe the difference between the annual change percentages of the latest and first releases in percentages. The first release refers to the time when preliminary data for the statistical reference quarter in question were released for the first time.

Inquiries

Ville Maljanen 029 551 2691
Director in charge:
Ville Vertanen

energia@stat.fi
www.stat.fi

Source: Statistics Finland, Energy supply and consumption