

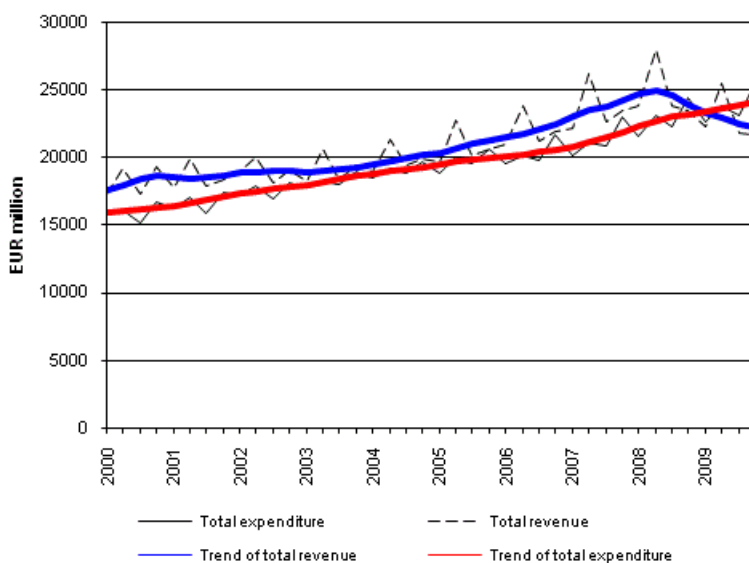
General government revenue and expenditure by quarter

2009, 4th quarter

Rising expenditure and falling revenue weakened general government's financial position in the 4th quarter of 2009

General government revenue decreased by 7.6 per cent in the fourth quarter of 2009 when comparing seasonally unadjusted data with corresponding data from the year before. The revenue items that fell most were income tax, property income, received social contributions and taxes on production and imports. Respectively, general government expenditure rose by 4.6 per cent. The expenditure items that grew most were social benefits in cash, intermediate consumption and compensation of employees. General government revenue contracted by EUR 1.8 billion from the corresponding quarter of the previous year. Expenditure increased respectively by EUR 1.1 billion. Due to the fallen revenue and risen expenditure, the financial position (net lending) of general government weakened by EUR 2.9 billion from the corresponding quarter of the year before and stood at minus EUR 3.8 billion. General government is comprised of central government, social security funds and local government. The data derive from Statistics Finland's quarterly statistics on general government revenue and expenditure.

General government total revenue and total expenditure 2000 - 2009



The data for the two latest years are preliminary and will become revised as annual national accounts data are revised. The trend shown in the Figures has been calculated with the Tramo/Seats method. The trend can become revised in the coming periods as preliminary data are revised. As the time series of annual accounts become revised, the time series of this set of statistics will also be revised. These data are based on the information on economic development available by 26 March 2010. The data will next be revised at the end of June 2010.

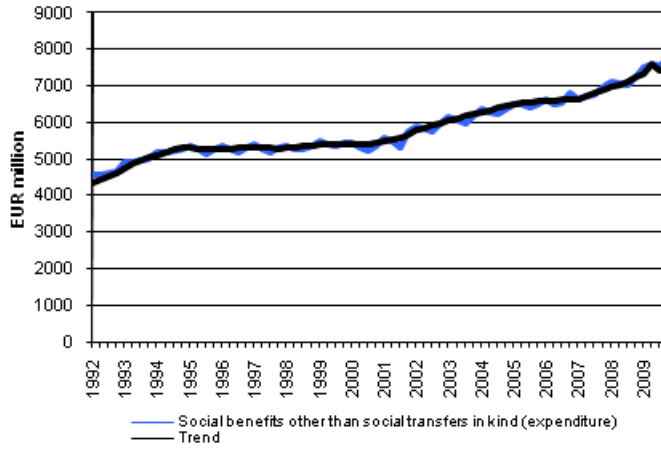
Contents

Figures

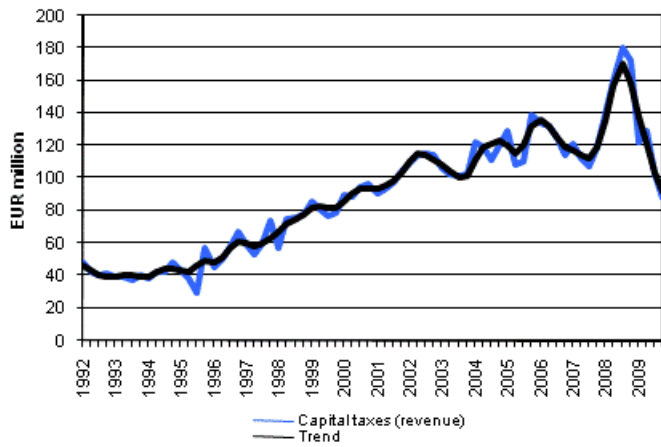
Social benefits other than social transfers in kind.....	4
Capital taxes.....	4
Actual social contributions.....	4
Current Taxes on Income, Wealth, etc.....	5
Value Added Type Taxes.....	5
Taxes on Production and Imports.....	5

Figures

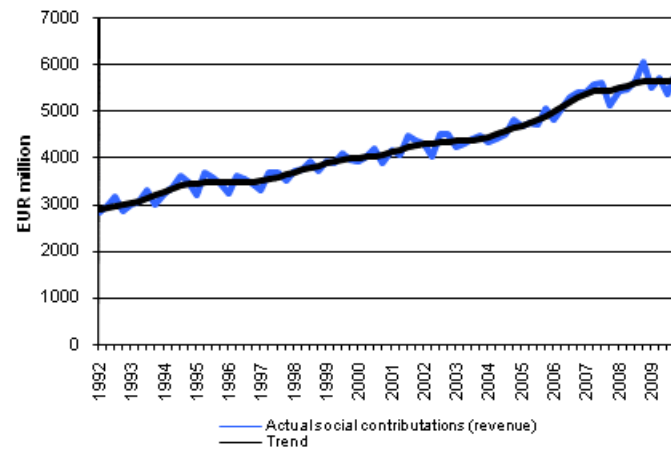
Social benefits other than social transfers in kind



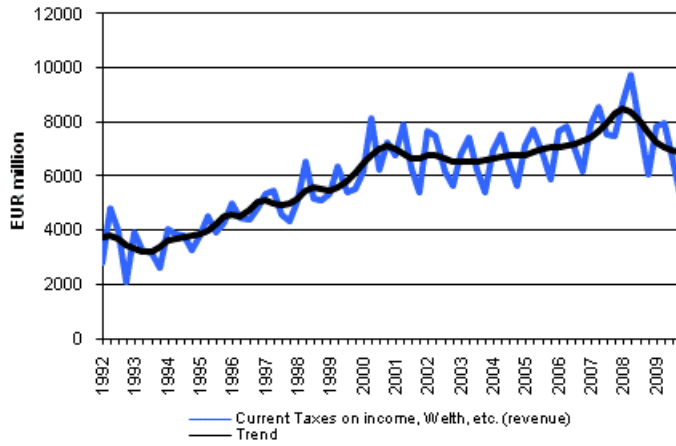
Capital taxes



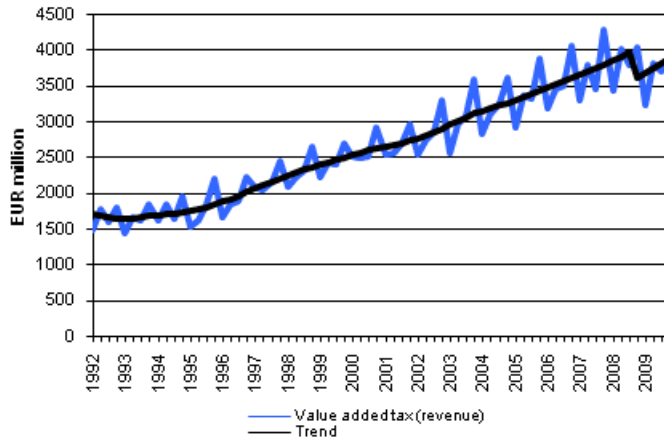
Actual social contributions



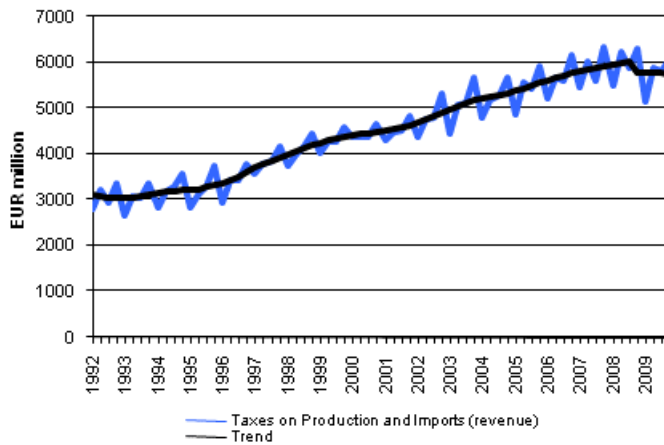
Current Taxes on Income, Wealth, etc.



Value Added Type Taxes



Taxes on Production and Imports



Suomen virallinen tilasto
Finlands officiella statistik
Official Statistics of Finland

Government Finance 2010

Inquiries

Jouni Pulkka (09) 1734 3532
Teuvo Laukkarinen (09) 1734 3315
Director in charge:
Ari Tyrkkö

rahoitus.tilinpito@tilastokeskus.fi

www.stat.fi