

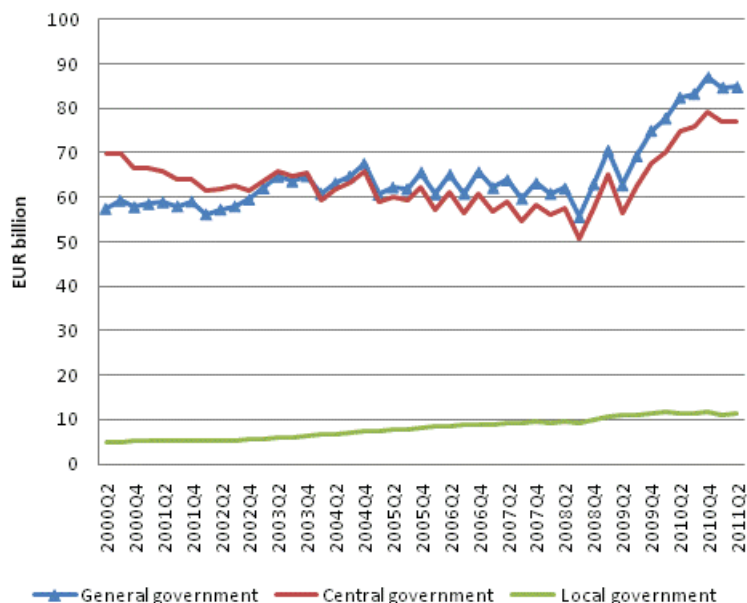
# General government debt by quarter

2011, 2nd quarter

## General government debt grew slightly in the second quarter of 2011

In the second quarter of 2011, general government debt grew by EUR 0.1 billion and stood at EUR 84.8 billion at the end of June. Of the general government debt, EUR 77.1 billion was central government debt and EUR 11.5 billion local government debt. General government debt is consolidated debt, which means that it excludes debt items between sub-sectors. For this reason, general government debt is smaller than the combined debts of its sub-sectors.

### General government debt by quarter



Most of the central government debt consisted of bonds, which were issued to the net amount of EUR 1.2 billion. At the end of June, the nominal value of bonds issued was EUR 65.9 billion. On the other hand, central government debt was also especially influenced by the amortization of central government's short-term debt securities to the net amount of EUR 1.6 billion. At the total level, the central government's share of general government debt remained unchanged in the second quarter.

Local government debt, that is, the debt of municipalities and joint municipal boards, grew by EUR 0.3 billion and was EUR 11.5 billion at the end of June. Local government debt mainly consists of long-term loans, the value of which stood at EUR 9.9 billion at the end of the second quarter.

# Contents

## Tables

### Appendix tables

Appendix table 1. General government debt by quarter, EUR billion.....4

## Appendix tables

**Appendix table 1. General government debt by quarter, EUR billion**

Sector <sup>1)</sup>	Time													
	2000	2001	2002	2003	2004	2005	2006	2007	2008	2009	2010	Q1-11	Q2-11	
S13	57.9	59.1	59.6	64.8	67.6	65.7	65.7	63.2	63.0	75.0	87.0	84.7	84.8	
S1311	66.5	64.0	61.3	65.3	65.7	62.3	61.0	58.4	57.7	67.8	79.1	77.1	77.1	
S1313	5.3	5.3	5.6	6.4	7.3	8.3	9.0	9.5	10.0	11.3	11.7	11.2	11.5	
S1314	0.0	0.0	0.1	0.1	0.0	0.0	0.0	0.0	0.0	0.0	0.0	0.0	0.0	

1) S13 General government S1311 Central government S1313 Local government S1314 Social security funds

---

Suomen virallinen tilasto  
Finlands officiella statistik  
Official Statistics of Finland

Government Finance 2011

### Inquiries

Anu Heikkilä (09) 1734 2309

Timo Ristimäki (09) 1734 2324

Director in charge:

Ari Tyrkkö

[rahoitus.tilinpito@stat.fi](mailto:rahoitus.tilinpito@stat.fi)

[www.stat.fi](http://www.stat.fi)

Source: General government debt by quarter, Statistics Finland