

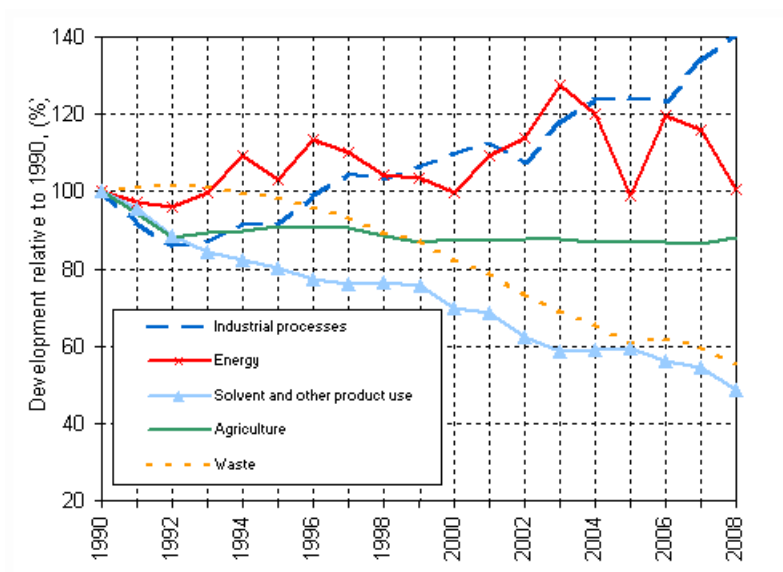
# Greenhouse gases 2008, preliminary data

---

## ***Finland's greenhouse gas emissions decreased by approximately 10 per cent from the previous year in 2008***

*According to the preliminary estimate that must be submitted to the European Commission on 15 January 2010, greenhouse gas emissions in Finland amounted to 70.1 million tonnes of carbon dioxide equivalent (t CO<sub>2</sub> eq.) in 2008. Emissions were over 10 per cent lower than in the previous year and approximately 1.2 per cent below the Kyoto Protocol commitment level. Emissions from the energy sector decreased most (-21%) from 2007. Emissions from transport were also lower than in the previous year for the first time in the 2000s (-4%). Compared to 2007, emissions also decreased in the waste sector (-7%), whereas emissions from industrial processes (+5%) and agriculture grew slightly. In Finland, the Land Use, Land-Use Change and Forestry (LULUCF) sector acts as net sink (removals from atmosphere exceed emissions). In 2008, the net removals of the sector amounted to 35.4 Mt of carbon dioxide equivalent, which was approximately 15 per cent more than in the year before. Emissions of the LULUCF sector are not included in full amounts in the commitments under the Kyoto Protocol.*

**Figure 1. Development of greenhouse gas emissions by sector in Finland 1990-2008**



**Table 1. Finland's greenhouse gas emissions exclusive of land use, land-use change and forestry sector (see Table 2). Emissions as amounts corresponding to million tonnes of CO<sub>2</sub>**

| Year | Energy            |   |           |              | Industrial processes                 |         | Solvents and other product use | Agriculture | Waste | Total |
|------|-------------------|---|-----------|--------------|--------------------------------------|---------|--------------------------------|-------------|-------|-------|
|      | Energy industries | Manufacturing industries and construction | Transport | Other energy | Industrial processes (excl. F-gases) | F-gases |                                |             |       |       |
| 1990 | 19.19             | 13.42                                     | 12.79     | 9.18         | 4.90                                 | 0.09    | 0.18                           | 6.62        | 3.97  | 70.34 |
| 1991 | 18.96             | 12.90                                     | 12.43     | 8.85         | 4.54                                 | 0.07    | 0.17                           | 6.23        | 4.01  | 68.16 |
| 1992 | 18.73             | 12.38                                     | 12.35     | 8.97         | 4.27                                 | 0.04    | 0.16                           | 5.82        | 4.03  | 66.75 |
| 1993 | 21.47             | 12.49                                     | 11.88     | 8.55         | 4.31                                 | 0.03    | 0.15                           | 5.91        | 4.02  | 68.81 |
| 1994 | 26.40             | 12.79                                     | 12.23     | 8.22         | 4.52                                 | 0.04    | 0.15                           | 5.94        | 3.97  | 74.25 |
| 1995 | 24.12             | 12.22                                     | 12.02     | 7.78         | 4.47                                 | 0.10    | 0.14                           | 6.02        | 3.91  | 70.79 |
| 1996 | 29.83             | 12.11                                     | 12.00     | 7.93         | 4.79                                 | 0.15    | 0.14                           | 6.01        | 3.82  | 76.78 |
| 1997 | 27.44             | 12.28                                     | 12.59     | 7.87         | 4.99                                 | 0.24    | 0.14                           | 5.99        | 3.72  | 75.25 |
| 1998 | 24.18             | 11.94                                     | 12.74     | 8.14         | 4.85                                 | 0.30    | 0.14                           | 5.85        | 3.55  | 71.69 |
| 1999 | 23.67             | 11.92                                     | 12.94     | 7.85         | 4.92                                 | 0.40    | 0.14                           | 5.74        | 3.48  | 71.05 |
| 2000 | 22.12             | 11.94                                     | 12.84     | 7.49         | 4.92                                 | 0.57    | 0.12                           | 5.81        | 3.27  | 69.09 |
| 2001 | 27.51             | 11.49                                     | 12.96     | 7.72         | 4.91                                 | 0.72    | 0.12                           | 5.77        | 3.14  | 74.35 |
| 2002 | 30.26             | 11.17                                     | 13.14     | 7.66         | 4.85                                 | 0.53    | 0.11                           | 5.81        | 2.92  | 76.47 |
| 2003 | 37.21             | 11.54                                     | 13.35     | 7.60         | 5.17                                 | 0.72    | 0.10                           | 5.81        | 2.75  | 84.25 |
| 2004 | 32.97             | 11.64                                     | 13.69     | 7.28         | 5.45                                 | 0.74    | 0.11                           | 5.74        | 2.61  | 80.21 |
| 2005 | 21.91             | 11.34                                     | 13.72     | 6.99         | 5.31                                 | 0.91    | 0.11                           | 5.74        | 2.41  | 68.43 |
| 2006 | 32.87             | 11.62                                     | 13.90     | 6.80         | 5.35                                 | 0.80    | 0.10                           | 5.73        | 2.46  | 79.65 |
| 2007 | 30.80             | 11.45                                     | 14.26     | 6.67         | 5.74                                 | 0.95    | 0.10                           | 5.72        | 2.38  | 78.07 |
| 2008 | 24.28             | 10.80                                     | 13.63     | 6.27         | 5.99                                 | 1.05    | 0.09                           | 5.83        | 2.20  | 70.14 |

**Table 2. Emissions and removals of the land use, land-use change and forestry sector in Finland. Emissions and sinks as amounts corresponding to million tonnes of CO<sub>2</sub> (emissions are positive figures, removals negative)**

| Year | Forest land | Cropland | Grassland | Peat production areas | Harvested wood products | Total  |
|------|-------------|----------|-----------|-----------------------|-------------------------|--------|
| 1990 | -21.57      | 5.78     | -0.26     | 1.01                  | -0.95                   | -15.99 |
| 1991 | -35.77      | 5.15     | -0.25     | 1.03                  | 0.31                    | -29.53 |
| 1992 | -28.21      | 4.93     | -0.24     | 1.07                  | -0.22                   | -22.67 |
| 1993 | -26.85      | 5.16     | -0.23     | 1.09                  | -0.09                   | -20.92 |
| 1994 | -18.01      | 5.12     | -0.22     | 1.12                  | -0.76                   | -12.75 |
| 1995 | -19.49      | 5.39     | -0.22     | 1.14                  | -0.87                   | -14.06 |
| 1996 | -29.28      | 5.39     | -0.21     | 1.17                  | -1.05                   | -23.98 |
| 1997 | -24.60      | 5.46     | -0.21     | 1.20                  | -2.12                   | -20.27 |
| 1998 | -23.06      | 5.36     | -0.21     | 1.24                  | -1.77                   | -18.44 |
| 1999 | -25.66      | 5.29     | -0.19     | 1.26                  | -2.04                   | -21.34 |
| 2000 | -27.67      | 5.24     | -0.18     | 1.28                  | -1.27                   | -22.59 |
| 2001 | -32.38      | 5.30     | -0.16     | 1.28                  | -0.31                   | -26.27 |
| 2002 | -32.89      | 5.33     | -0.13     | 1.26                  | -0.44                   | -26.87 |
| 2003 | -32.87      | 5.16     | -0.11     | 1.27                  | -0.89                   | -27.44 |
| 2004 | -34.55      | 5.21     | -0.08     | 1.33                  | -0.83                   | -28.92 |
| 2005 | -39.02      | 5.28     | -0.05     | 1.32                  | -0.34                   | -32.82 |
| 2006 | -44.08      | 5.39     | -0.03     | 1.31                  | -0.45                   | -37.85 |
| 2007 | -36.10      | 5.35     | 0.00      | 1.31                  | -1.21                   | -30.65 |
| 2008 | -41.93      | 5.32     | 0.00      | 1.31                  | -0.09                   | -35.39 |

# Contents

## Tables

|  |   |
|--|---|
| Table 1. Greenhouse gas emissions in Finland 1990–2008 (million t CO <sub>2</sub> eq.) by emission category.....       | 5 |
| Table 2: Carbon dioxide emissions in Finland 1990, 1995–2008 (million t CO <sub>2</sub> eq.) by emission category..... | 5 |
| Table 3. Methane emissions in Finland 1990, 1995–2008 (1000 t) by emission category.....                               | 7 |
| Table 4. Nitrous oxide emissions in Finland 1990, 1995–2008 (1000 t) by emission category.....                         | 8 |
| Table 5. Emissions of F-gases in Finland 1990–2008 (1000 t CO <sub>2</sub> eq.).....                                   | 8 |

## Figures

|  |    |
|--|----|
| Figure 1: Greenhouse gas emissions in Finland by sectors in 2008 (%) .....   | 9  |
| Figure 2: Greenhouse gas emissions in Finland in 1990 - 2008 (million t CO <sub>2</sub> eq.).....                                      | 9  |
| Figure 3: Development of emissions in Finland in the energy sector in 1990 - 2008 (million t CO <sub>2</sub> eq.).....                 | 10 |
| Figure 4: Greenhouse gas emission in Finland in 1990 - 2008 in relation to the Kyoto target level (million t CO <sub>2</sub> eq.)..... | 10 |

## Tables

**Table 1. Greenhouse gas emissions in Finland 1990–2008 (million t CO<sub>2</sub> eq.) by emission category**

|      | Energy | Industrial processes | Solvents and other product use | Agriculture | Waste | Land use, land-use change and forestry (LULUCF) <sup>1)</sup> | Total | Total excluding LULUCF |
|------|--------|----------------------|--------------------------------|-------------|-------|---|-------|------------------------|
| 1990 | 54,58  | 5,00                 | 0,18                           | 6,62        | 3,97  | -15,99  | 54,36 | 70,34                  |
| 1991 | 53,15  | 4,60                 | 0,17                           | 6,23        | 4,01  | -29,53  | 38,63 | 68,16                  |
| 1992 | 52,43  | 4,31                 | 0,16                           | 5,82        | 4,03  | -22,67  | 44,08 | 66,75                  |
| 1993 | 54,39  | 4,34                 | 0,15                           | 5,91        | 4,02  | -20,92  | 47,89 | 68,81                  |
| 1994 | 59,63  | 4,56                 | 0,15                           | 5,94        | 3,97  | -12,75  | 61,50 | 74,25                  |
| 1995 | 56,15  | 4,57                 | 0,14                           | 6,02        | 3,91  | -14,06  | 56,73 | 70,79                  |
| 1996 | 61,87  | 4,94                 | 0,14                           | 6,01        | 3,82  | -23,98  | 52,80 | 76,78                  |
| 1997 | 60,17  | 5,24                 | 0,14                           | 5,99        | 3,72  | -20,27  | 54,98 | 75,25                  |
| 1998 | 57,00  | 5,15                 | 0,14                           | 5,85        | 3,55  | -18,44  | 53,24 | 71,69                  |
| 1999 | 56,38  | 5,31                 | 0,14                           | 5,74        | 3,48  | -21,34  | 49,70 | 71,05                  |
| 2000 | 54,40  | 5,49                 | 0,12                           | 5,81        | 3,27  | -22,59  | 46,50 | 69,09                  |
| 2001 | 59,68  | 5,63                 | 0,12                           | 5,77        | 3,14  | -26,27  | 48,07 | 74,35                  |
| 2002 | 62,24  | 5,38                 | 0,11                           | 5,81        | 2,92  | -26,87  | 49,60 | 76,47                  |
| 2003 | 69,70  | 5,89                 | 0,10                           | 5,81        | 2,75  | -27,44  | 56,80 | 84,25                  |
| 2004 | 65,57  | 6,19                 | 0,11                           | 5,74        | 2,61  | -28,92  | 51,30 | 80,21                  |
| 2005 | 53,96  | 6,21                 | 0,11                           | 5,74        | 2,41  | -32,82  | 35,60 | 68,43                  |
| 2006 | 65,20  | 6,16                 | 0,10                           | 5,73        | 2,46  | -37,85  | 41,80 | 79,65                  |
| 2007 | 63,18  | 6,69                 | 0,10                           | 5,72        | 2,38  | -30,65  | 47,42 | 78,07                  |
| 2008 | 54,99  | 7,03                 | 0,09                           | 5,83        | 2,20  | -35,39  | 34,75 | 70,14                  |

1) Emissions are positive figures, removals negative

**Table 2: Carbon dioxide emissions in Finland 1990, 1995–2008 (million t CO<sub>2</sub> eq.) by emission category**

|  | 1990  | 1995  | 1996  | 1997  | 1998  | 1999  | 2000  | 2001  | 2002  | 2003  | 2004  | 2005  | 2006  | 2007  | 2008  |
|--|-------|-------|-------|-------|-------|-------|-------|-------|-------|-------|-------|-------|-------|-------|-------|
| Public electricity and heat production                   | 16,45 | 21,05 | 26,52 | 24,35 | 20,92 | 20,34 | 19,00 | 24,38 | 26,86 | 33,66 | 29,43 | 18,65 | 29,44 | 27,34 | 20,86 |
| Oil refineries   | 2,26  | 2,56  | 2,77  | 2,51  | 2,64  | 2,68  | 2,55  | 2,53  | 2,73  | 2,80  | 2,79  | 2,59  | 2,68  | 2,76  | 2,77  |
| Manufacturing of solid fuels and other energy industries | 0,35  | 0,32  | 0,30  | 0,34  | 0,38  | 0,42  | 0,35  | 0,32  | 0,36  | 0,39  | 0,42  | 0,39  | 0,40  | 0,35  | 0,33  |
| Manufacturing industries and construction                | 13,23 | 12,04 | 11,93 | 12,07 | 11,74 | 11,72 | 11,74 | 11,29 | 10,99 | 11,35 | 11,44 | 11,16 | 11,45 | 11,28 | 10,64 |
| Transport  | 12,52 | 11,77 | 11,74 | 12,33 | 12,48 | 12,68 | 12,59 | 12,71 | 12,89 | 13,11 | 13,45 | 13,48 | 13,67 | 14,04 | 13,41 |

|   | 1990   | 1995   | 1996   | 1997   | 1998   | 1999   | 2000   | 2001   | 2002   | 2003   | 2004   | 2005   | 2006   | 2007   | 2008   |
|---|--------|--------|--------|--------|--------|--------|--------|--------|--------|--------|--------|--------|--------|--------|--------|
| Heating of buildings, other fuel use in agriculture, forestry and fisheries | 7,04   | 5,70   | 5,82   | 5,83   | 5,92   | 5,83   | 5,46   | 5,66   | 5,60   | 5,51   | 5,35   | 5,13   | 4,94   | 4,83   | 4,47   |
| Industrial processes  | 3,24   | 3,00   | 3,32   | 3,54   | 3,46   | 3,56   | 3,54   | 3,61   | 3,51   | 3,75   | 3,94   | 3,67   | 3,91   | 4,26   | 4,42   |
| Fugitive emissions from fuels   | 0,22   | 0,17   | 0,15   | 0,20   | 0,14   | 0,13   | 0,13   | 0,12   | 0,12   | 0,12   | 0,11   | 0,13   | 0,11   | 0,13   | 0,14   |
| Solvents and other products use   | 0,12   | 0,08   | 0,08   | 0,07   | 0,07   | 0,07   | 0,07   | 0,07   | 0,07   | 0,06   | 0,06   | 0,06   | 0,06   | 0,06   | 0,05   |
| Other fuel use  | 1,19   | 1,20   | 1,22   | 1,13   | 1,38   | 1,23   | 1,27   | 1,26   | 1,26   | 1,28   | 1,15   | 1,10   | 1,09   | 1,08   | 1,06   |
| Land use, land-use change and forestry (LULUCF) <sup>1)</sup>               | -16,11 | -14,17 | -24,09 | -20,39 | -18,57 | -21,47 | -22,72 | -26,40 | -27,00 | -27,57 | -29,05 | -32,96 | -38,00 | -30,79 | -35,55 |
| Total   | 40,50  | 43,70  | 39,76  | 41,98  | 40,58  | 37,18  | 33,98  | 35,56  | 37,39  | 44,45  | 39,09  | 23,41  | 29,75  | 35,32  | 22,60  |
| Total excluding LULUCF  | 56,61  | 57,87  | 63,85  | 62,37  | 59,15  | 58,65  | 56,70  | 61,96  | 64,39  | 72,03  | 68,14  | 56,37  | 67,75  | 66,11  | 58,15  |

1) Positive figures are emissions, negative removals

**Table 3. Methane emissions in Finland 1990, 1995–2008 (1000 t) by emission category**

|   | 1990  | 1995  | 1996  | 1997  | 1998  | 1999  | 2000  | 2001  | 2002  | 2003  | 2004  | 2005  | 2006  | 2007  | 2008  |
|---|-------|-------|-------|-------|-------|-------|-------|-------|-------|-------|-------|-------|-------|-------|-------|
| Energy industries                                 | 0.4   | 0.6   | 0.7   | 0.8   | 0.8   | 0.8   | 0.7   | 0.9   | 1.2   | 1.3   | 1.2   | 1.0   | 1.2   | 1.1   | 1.0   |
| Manufacturing industry and construction           | 0.6   | 0.7   | 0.7   | 0.7   | 0.7   | 0.7   | 0.7   | 0.7   | 0.7   | 0.7   | 0.7   | 0.7   | 0.7   | 0.7   | 0.6   |
| Transport   | 4.7   | 3.9   | 3.7   | 3.6   | 3.5   | 3.4   | 3.2   | 3.0   | 2.9   | 2.8   | 2.6   | 2.4   | 2.2   | 2.1   | 1.9   |
| Enteric fermentation                              | 91.4  | 80.1  | 80.3  | 81.3  | 79.3  | 78.1  | 78.3  | 77.3  | 78.0  | 77.1  | 76.2  | 75.7  | 75.7  | 74.7  | 74.1  |
| Manure management                                 | 11.0  | 12.0  | 12.1  | 12.9  | 12.6  | 12.4  | 12.7  | 12.3  | 12.8  | 13.2  | 13.1  | 13.5  | 13.5  | 13.5  | 13.7  |
| Solid waste disposal                              | 173.1 | 169.8 | 165.4 | 160.7 | 153.1 | 149.5 | 139.7 | 133.3 | 122.8 | 114.3 | 107.7 | 97.6  | 100.4 | 95.8  | 88.2  |
| Sewage treatment                                  | 7.3   | 7.0   | 6.8   | 6.7   | 6.6   | 6.4   | 6.3   | 6.2   | 6.4   | 6.4   | 6.3   | 6.2   | 6.2   | 6.2   | 6.0   |
| Heating of institutional and commercial buildings | 0.3   | 0.3   | 0.3   | 0.3   | 0.3   | 0.3   | 0.3   | 0.3   | 0.3   | 0.3   | 0.3   | 0.3   | 0.3   | 0.3   | 0.3   |
| Residential heating                               | 7.8   | 8.1   | 8.5   | 8.5   | 8.6   | 8.4   | 8.2   | 9.2   | 9.4   | 9.5   | 9.5   | 9.6   | 9.8   | 9.9   | 9.7   |
| Fuel use in agriculture, forestry and fisheries   | 0.6   | 0.4   | 0.4   | 0.4   | 0.5   | 0.4   | 0.4   | 0.5   | 0.5   | 0.5   | 0.5   | 0.5   | 0.5   | 0.5   | 0.5   |
| Fugitive emissions from fuels                     | 0.5   | 3.8   | 3.9   | 3.4   | 3.5   | 2.8   | 2.6   | 3.2   | 2.7   | 2.9   | 2.6   | 3.1   | 2.6   | 2.4   | 2.3   |
| Industrial processes                              | 0.2   | 0.5   | 0.5   | 0.4   | 0.5   | 0.5   | 0.5   | 0.5   | 0.5   | 0.4   | 0.5   | 0.4   | 0.4   | 0.4   | 0.4   |
| Other fuel use                                    | 0.1   | 0.1   | 0.1   | 0.1   | 0.1   | 0.1   | 0.1   | 0.1   | 0.1   | 0.1   | 0.1   | 0.1   | 0.1   | 0.1   | 0.1   |
| Land use, land-use change and forestry (LULUCF)   | 1.6   | 1.7   | 1.7   | 1.8   | 1.7   | 1.8   | 1.8   | 1.9   | 1.9   | 1.9   | 1.8   | 1.9   | 1.9   | 1.8   | 1.8   |
| Compost production                                | 1.0   | 1.7   | 1.9   | 1.9   | 2.0   | 2.2   | 2.3   | 2.4   | 2.5   | 2.6   | 2.7   | 3.0   | 3.0   | 3.3   | 2.8   |
| Total   | 300.6 | 290.7 | 287.0 | 283.5 | 273.8 | 267.8 | 257.8 | 251.8 | 242.7 | 234.0 | 225.8 | 216.0 | 218.5 | 212.8 | 203.4 |

**Table 4. Nitrous oxide emissions in Finland 1990, 1995–2008 (1000 t) by emission category**

|   | 1990        | 1995        | 1996        | 1997        | 1998        | 1999        | 2000        | 2001        | 2002        | 2003        | 2004        | 2005        | 2006        | 2007        | 2008        |
|---|-------------|-------------|-------------|-------------|-------------|-------------|-------------|-------------|-------------|-------------|-------------|-------------|-------------|-------------|-------------|
| Energy industries   | 0.4         | 0.6         | 0.7         | 0.7         | 0.7         | 0.7         | 0.7         | 0.8         | 0.9         | 1.1         | 1.0         | 0.8         | 1.1         | 1.1         | 1.0         |
| Manufacturing and construction  | 0.6         | 0.5         | 0.6         | 0.6         | 0.6         | 0.6         | 0.6         | 0.6         | 0.6         | 0.6         | 0.6         | 0.5         | 0.5         | 0.5         | 0.5         |
| Transport   | 0.6         | 0.6         | 0.6         | 0.6         | 0.6         | 0.6         | 0.6         | 0.6         | 0.6         | 0.6         | 0.6         | 0.6         | 0.6         | 0.6         | 0.6         |
| Industrial processes  | 5.3         | 4.7         | 4.7         | 4.7         | 4.4         | 4.3         | 4.4         | 4.2         | 4.3         | 4.5         | 4.8         | 5.2         | 4.6         | 4.8         | 5.0         |
| Solvents and other product use  | 0.2         | 0.2         | 0.2         | 0.2         | 0.2         | 0.2         | 0.2         | 0.2         | 0.1         | 0.1         | 0.1         | 0.2         | 0.1         | 0.1         | 0.1         |
| Manure management   | 1.6         | 1.4         | 1.5         | 1.5         | 1.5         | 1.4         | 1.4         | 1.3         | 1.4         | 1.4         | 1.4         | 1.4         | 1.3         | 1.3         | 1.4         |
| Agricultural soils  | 12.8        | 11.7        | 11.7        | 11.4        | 11.2        | 10.9        | 11.2        | 11.2        | 11.2        | 11.2        | 11.1        | 11.1        | 11.1        | 11.1        | 11.5        |
| Waste   | 0.5         | 0.5         | 0.5         | 0.5         | 0.5         | 0.5         | 0.5         | 0.5         | 0.5         | 0.5         | 0.5         | 0.5         | 0.5         | 0.5         | 0.5         |
| Heating of buildings, other fuel use in agriculture, forestry and fisheries | 0.3         | 0.2         | 0.3         | 0.3         | 0.3         | 0.3         | 0.2         | 0.3         | 0.3         | 0.3         | 0.3         | 0.2         | 0.2         | 0.2         | 0.2         |
| Fugitive emissions from fuels <sup>1)</sup>                                 | 0.0         | 0.0         | 0.0         | 0.0         | 0.0         | 0.0         | 0.0         | 0.0         | 0.0         | 0.0         | 0.0         | 0.0         | 0.0         | 0.0         | 0.0         |
| Other fuel use  | 1.4         | 1.2         | 1.2         | 1.2         | 1.1         | 1.1         | 1.0         | 1.0         | 1.0         | 1.1         | 1.0         | 0.9         | 1.0         | 0.9         | 0.8         |
| Land use, land-use change and forestry (LULUCF)                             | 0.3         | 0.2         | 0.3         | 0.3         | 0.3         | 0.3         | 0.3         | 0.3         | 0.3         | 0.3         | 0.3         | 0.3         | 0.3         | 0.3         | 0.4         |
| <b>Total</b>  | <b>24.0</b> | <b>21.8</b> | <b>22.3</b> | <b>22.0</b> | <b>21.4</b> | <b>20.9</b> | <b>21.1</b> | <b>21.0</b> | <b>21.2</b> | <b>21.7</b> | <b>21.7</b> | <b>21.7</b> | <b>21.3</b> | <b>21.4</b> | <b>22.0</b> |

1) Notation 0.0 means that the value of the quantity is less than 0.05

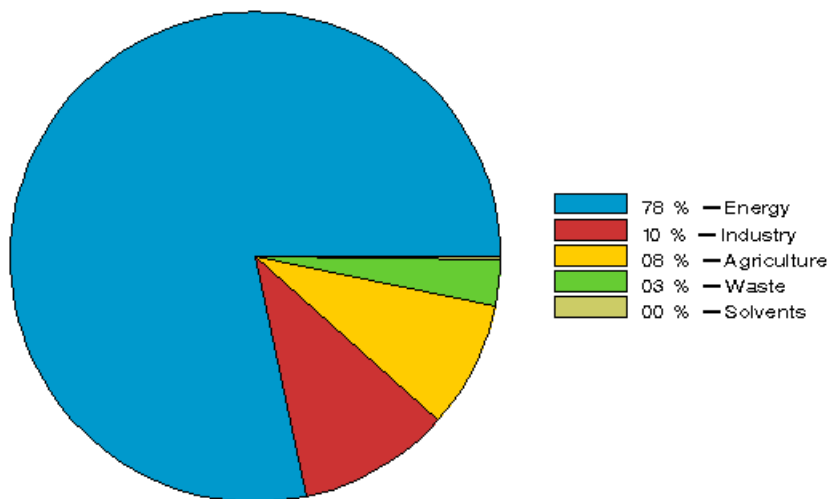
**Table 5. Emissions of F-gases in Finland 1990–2008 (1000 t CO<sub>2</sub> eq.)**

| Year | HFCs  | PFCs | Sulphur hexafluoride | Total |
|------|-------|------|----------------------|-------|
| 1990 | 0.0   | 0.1  |                      | 94.4  |
| 1991 | 0.1   | 0.1  |                      | 67.3  |
| 1992 | 0.1   | 0.1  |                      | 36.6  |
| 1993 | 0.1   | 0.1  |                      | 33.6  |
| 1994 | 6.5   | 0.1  |                      | 34.9  |
| 1995 | 29.3  | 0.1  |                      | 68.5  |
| 1996 | 77.3  | 0.2  |                      | 72.2  |
| 1997 | 167.8 | 0.2  |                      | 76.0  |
| 1998 | 245.2 | 0.2  |                      | 53.2  |
| 1999 | 318.6 | 28.0 |                      | 52.0  |
| 2000 | 494.1 | 22.5 |                      | 51.5  |
| 2001 | 648.0 | 20.1 |                      | 55.0  |
| 2002 | 464.1 | 13.4 |                      | 51.3  |
| 2003 | 652.2 | 14.9 |                      | 48.1  |
| 2004 | 695.3 | 12.2 |                      | 33.8  |
| 2005 | 864.0 | 9.9  |                      | 32.7  |
| 2006 | 747.8 | 15.4 |                      | 40.2  |
| 2007 | 904.1 | 8.4  |                      | 36.0  |
| 2008 | 994.0 | 11.2 |                      | 40.4  |



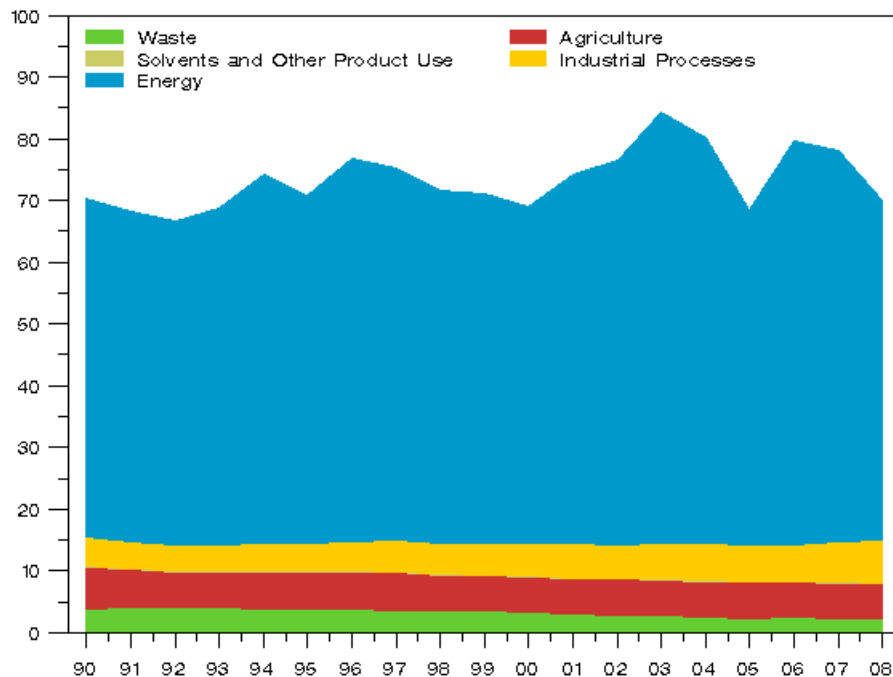
# Figures

**Figure 1: Greenhouse gas emissions in Finland by sectors in 2008 (%)**

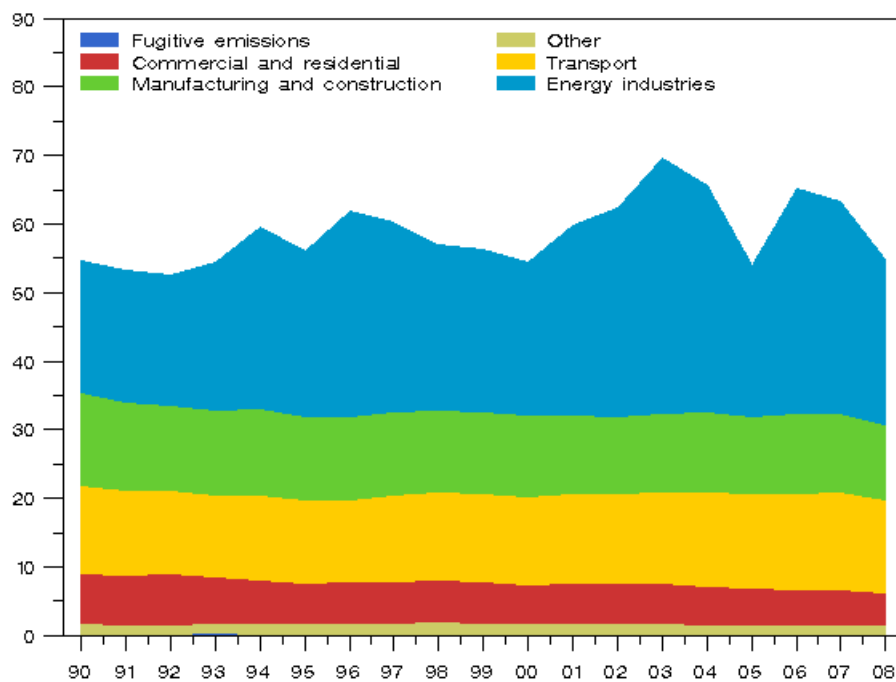


A zero means that contribution to the total is less than half percent

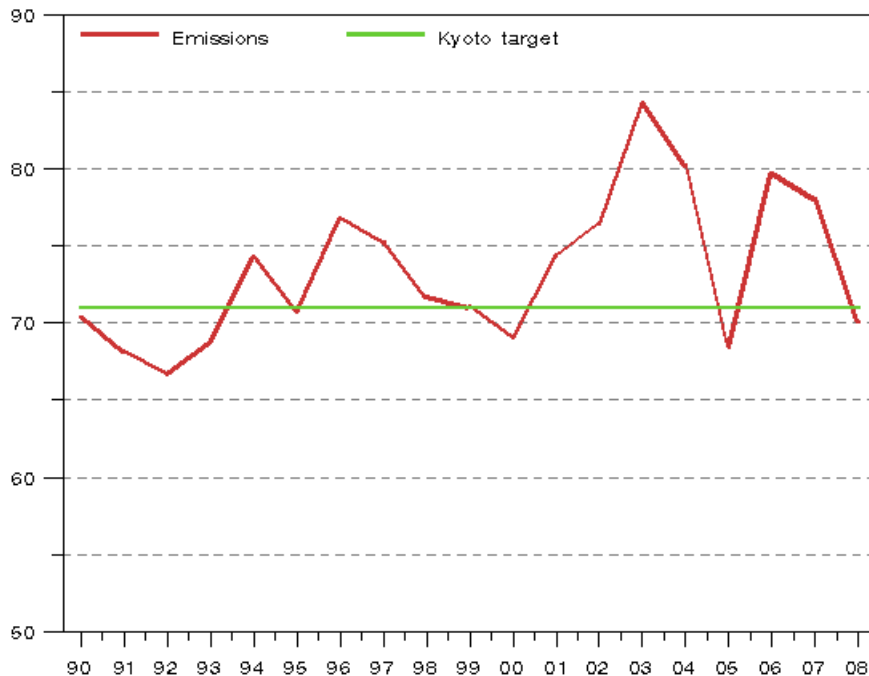
**Figure 2: Greenhouse gas emissions in Finland in 1990 - 2008 (million t CO2 eq.)**



**Figure 3: Development of emissions in Finland in the energy sector in 1990 - 2008 (million t CO2 eq.)**



**Figure 4: Greenhouse gas emission in Finland in 1990 - 2008 in relation to the Kyoto target level (million t CO2 eq.)**



---

Suomen virallinen tilasto  
Finlands officiella statistik  
Official Statistics of Finland

Environment and Natural Resources 2009

### Inquiries

Riitta Pipatti (09) 1734 3543

Timo Kareinen (09) 1734 3528

Director in charge:

Leena Storgårds

[kasvihuonekaasut@tilastokeskus.fi](mailto:kasvihuonekaasut@tilastokeskus.fi)

[www.stat.fi](http://www.stat.fi)