

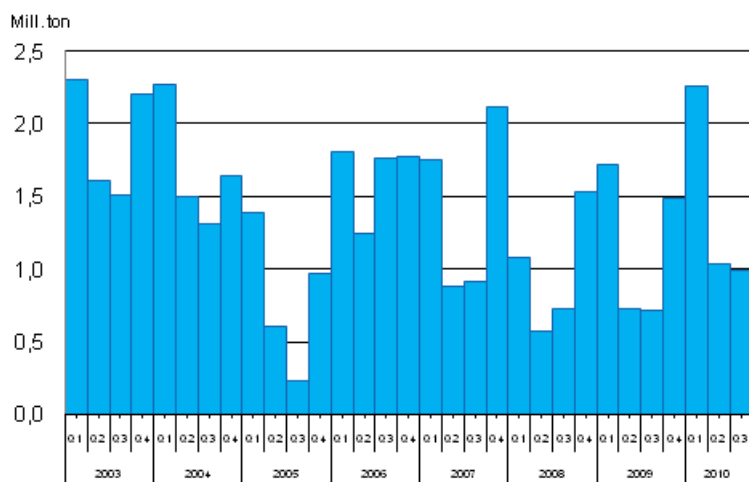
Consumption of hard coal

2010, 3rd quarter

Consumption of hard coal increased by 35 per cent in January to September

According to Statistics Finland's preliminary data, approximately 4.3 million tonnes (99,500 TJ) of hard coal were consumed as fuel in the generation of electricity and heat in the first three quarters of 2010. The consumption increased by 35 per cent from the respective period of the previous year. In the first three quarters of the year, consumption of hard coal was 20 per cent above the average for the 2000s. In the third quarter of the year the consumption totalled nearly 1 million tonnes (16,900 TJ). This was 38 per cent more than in the third quarter of 2009. Over the last 12 months consumption grew by 23 per cent.

Consumption of Hard Coal, million tonnes



The data for 2009 and 2010 are preliminary.

Over the January to September period, the use of hard coal went up especially in separate production of electricity, in which its use was up by 66 per cent on one year earlier. The consumption was put up by the cold winter and diminished production of hydro power. In the first three quarters of the year the consumption of electricity showed a growth of around eight per cent. At the same time the water situation in the Nordic countries was weaker than in the previous year. More electricity than before was also produced for the Nordic market.

Contents

Tables

Appendix tables

Appendix table 1. Consumption of Hard Coal, 1000 tonnes.....	3
Appendix table 2. Hard Coal Stocks, month-end, million tonnes.....	3

Figures

Appendix figures

Appendix figure 1. Consumption of Hard Coal, 12-month moving total.....	4
---	---

Appendix tables

Appendix table 1. Consumption of Hard Coal, 1000 tonnes

Month	Year										
	2000	2001	2002	2003	2004	2005	2006	2007	2008	2009 ¹⁾	2010 ¹⁾
January	610	490	580	820	890	380	550	560	410	610	830
February	450	600	440	750	720	430	590	680	330	610	750
March	390	640	420	730	660	570	660	510	330	500	670
April	250	430	320	660	550	280	420	340	230	310	490
May	290	340	190	570	490	230	370	240	160	230	320
June	100	260	130	380	460	90	450	300	180	190	240
July	80	190	210	380	410	50	500	110	20	180	150
August	220	210	270	490	480	90	580	300	200	240	170
September	270	230	450	650	430	90	680	500	380	300	670
October	380	330	760	700	530	210	660	640	440	360	-
November	400	420	770	700	630	300	660	750	530	470	-
December	470	570	800	800	480	460	450	720	570	650	-
1st-3rd Quarter	2 660	3 390	3 020	5 430	5 080	2 230	4 810	3 540	2 380	3 170	4 290
Whole year	3 910	4 710	5 360	7 640	6 720	3 200	6 590	5 660	3 780	4 650	-

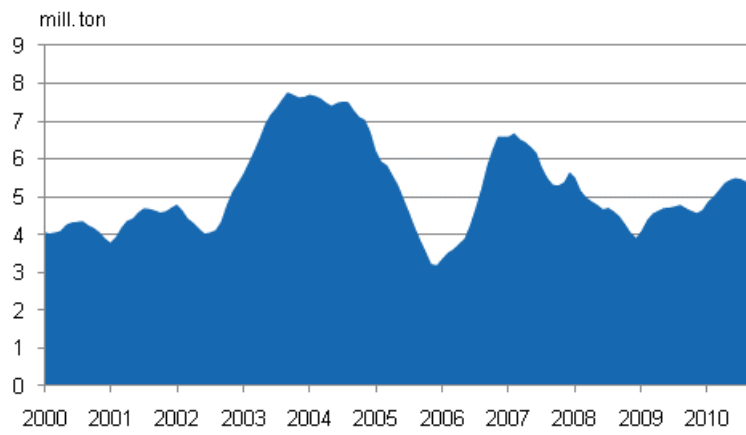
1) The data is preliminary.

Appendix table 2. Hard Coal Stocks, month-end, million tonnes

Month	Year				
	2006	2007	2008	2009	2010
January	5,0	4,4	3,6	4,2	4,3
February	4,6	4,1	3,6	4,1	3,8
March	4,1	4,2	3,7	4,0	3,4
April	3,9	4,4	3,7	4,2	3,2
May	3,8	4,8	3,9	4,5	3,5
June	3,7	4,8	4,0	4,9	3,7
July	3,4	4,9	4,1	5,2	3,9
August	3,2	5,0	4,3	5,5	4,0
September	3,3	4,7	4,1	5,5	4,3
October	3,5	4,5	3,9	5,4	-
November	3,8	4,1	4,1	5,2	-
December	4,4	3,7	4,4	4,8	-

Appendix figures

Appendix figure 1. Consumption of Hard Coal, 12-month moving total



Inquiries

Pentti Wanhatalo (09) 1734 2685
Director in charge:
Leena Storgårds
energia@stat.fi
www.stat.fi