

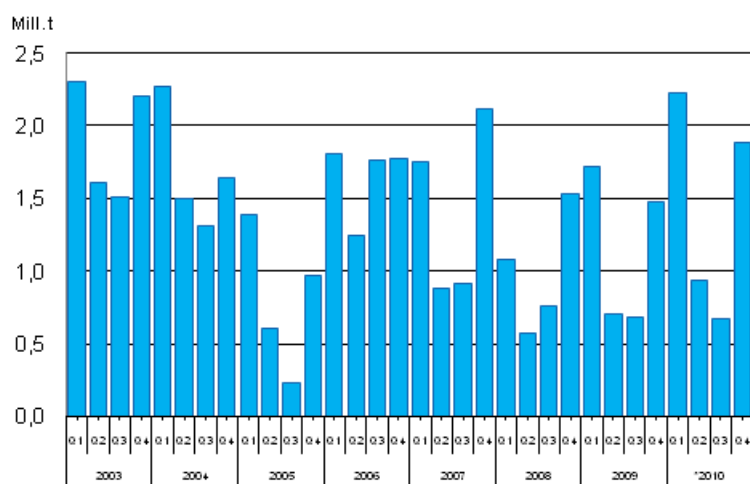
Consumption of hard coal

2010, 4th quarter

Consumption of hard coal increased by 25 per cent in 2010

According to Statistics Finland's preliminary data, approximately 5.7 million tonnes (approx. 39.8 TWh) of hard coal were consumed as fuel in the generation of electricity and heat during 2010. Expressed in tonnes, the consumption of hard coal increased by 25 per cent from 2009. In the last quarter of the year, the consumption totalled 1.9 million tonnes (12.9 TWh), which is 27.8 per cent more than in the respective quarter of 2009. Use of hard coal went up especially in separate production of electricity.

Consumption of Hard Coal, million tonnes



The data for year 2010 is preliminary.

In 2010, the consumption of hard coal was ten per cent up on the average for the 2000s. In December 2010, the stocks of hard coal were 24 down year-on-year. Total electricity consumption went up by 7.6 per cent in 2010. Over 60 per cent more coal was used in separate production of electricity than one year earlier. The consumption was put up by the cold winter and diminished production of hydro power. At the same time the water situation in the Nordic countries was weaker than in the previous year. More electricity than before was also produced for the Nordic market. Figures on monthly consumption in 2010 have been corrected due to revised data.

Contents

Tables

Appendix tables

Appendix table 1. Consumption of hard coal.....3
Appendix table 2. Hard Coal Stocks, month-end.....3

Figures

Appendix figures

Appendix figure 1. Consumption of Hard Coal, 12-month moving total.....4

Appendix tables

Appendix table 1. Consumption of hard coal

Period	2009	2010*	Yearly change %
	Quantity (1000 t)	Quantity (1000 t)	
January	608	824	35.6
February	613	753	22.9
March	498	651	30.9
April	299	460	53.6
May	218	293	34.6
June	183	188	2.9
July	165	175	6.2
August	235	167	-29.0
September	287	325	13.1
October	356	450	26.4
November	466	612	31.3
December	650	819	26.0
1. quarter	1718	2228	29.7
2. quarter	701	942	34.4
3. quarter	687	667	-2.9
4. quarter	1472	1881	27.8
January-March cum.	1718	2228	29.7
January-June cum.	2419	3170	31.1
January-September cum.	3106	3837	23.5
January-December cum.	4578	5719	24.9

1) *Preliminary, Figures on monthly consumption in 2010 have been corrected due to revised data.

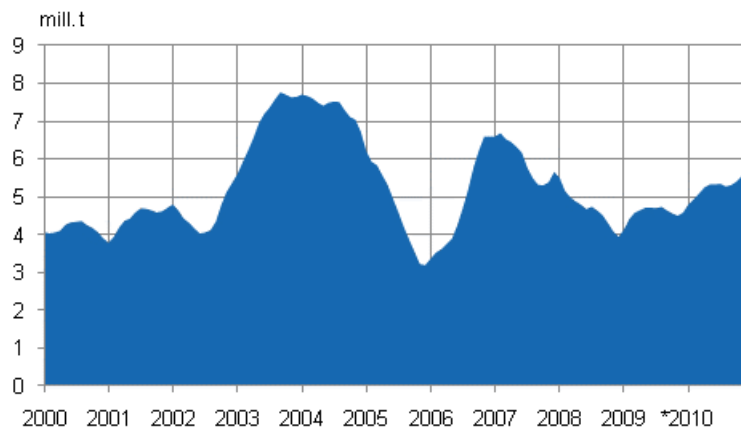
Appendix table 2. Hard Coal Stocks, month-end

Period	2009	2010*	Yearly change %
	Quantity (1000 t)	Quantity (1000 t)	
January	4234	4324	2.1
February	4081	3867	-5.2
March	3984	3483	-12.6
April	4153	3334	-19.7
May	4531	3588	-20.8
June	4857	3856	-20.6
July	5175	3983	-23.0
August	5478	4129	-24.6
September	5529	4440	-19.7
October	5433	4460	-17.9
November	5216	4157	-20.3
December	4847	3664	-24.4

1) *Preliminary

Appendix figures

Appendix figure 1. Consumption of Hard Coal, 12-month moving total



*Preliminary

Suomen virallinen tilasto
Finlands officiella statistik
Official Statistics of Finland

Energy 2011

Inquiries

Pentti Wanhatalo (09) 1734 2685
Director in charge:
Leena Storgårds
energia@stat.fi
www.stat.fi

Source: Since 2005 Statistics Finland, 1997-2004 Coal User's Committee/Finergy, Statistics Finland