

# Statistics on local government productivity 2006

## Local government productivity fell in 2006

According to preliminary data in Statistics Finland statistics on local government productivity, the combined total productivity of education, health and social work of local government fell by 1.4 per cent in 2006. This decline was due to stronger growth in total input volume than in output volume. The volume of total input grew by 1.8 per cent, while the volume of output grew by 0.4 per cent.

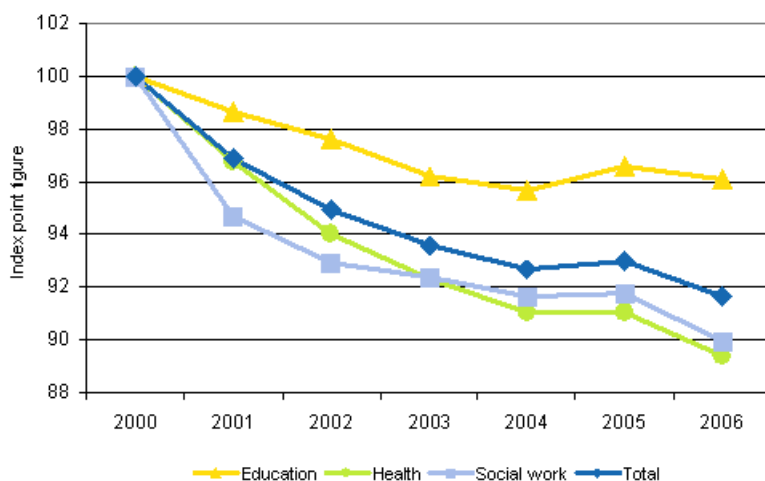
### Volume changes in the output and total input and changes in total productivity of local government by industry in 2006\*, per cent from the year before

2006*	Education	Health	Social work	Total
Output	-0.3	0.3	1.2	<b>0.4</b>
Total input	0.2	2.1	3.3	<b>1.8</b>
Total productivity	-0.5	-1.8	-2.0	<b>-1.4</b>

\*)

The total productivity of local government fell in all of the three industries under examination during 2006. Total productivity of health declined by almost 2 per cent due to the 2 per cent growth in total input as output increased only slightly. The total input of education remained nearly unchanged, but the slight decrease in output led to a half per cent drop in total productivity. The total productivity of social work fell by 2 per cent as total input grew by more than 3 per cent and output increased by a bit over 1 per cent.

### Development in the total productivity of education, health and social work of local government in 2000-2006\* (2000=100)



This statistics is based on preliminary data and it will be revised in January 2008.

## Contents

### Appendix tables

Volume changes in the output and total input and changes in total productivity of local government by industry in 2001-2006*, per cent from the year before.....	4
--	---

## Appendix tables

**Volume changes in the output and total input and changes in total productivity of local government by industry in 2001-2006\*, per cent from the year before**

		2001	2002	2003	2004	2005*	2006*
<b>Education</b>	Output	0.3	0.7	0.1	0.0	2.2	-0.3
	Total input	1.6	1.8	1.5	0.5	1.2	0.2
	Total productivity	-1.3	-1.1	-1.4	-0.6	1.0	-0.5
<b>Health</b>	Output	0.4	0.7	1.1	4.0	4.4	0.3
	Total input	3.7	3.6	2.9	5.5	4.4	2.1
	Total productivity	-3.2	-2.8	-1.8	-1.4	0.0	-1.8
<b>Social work</b>	Output	-1.7	1.0	0.2	0.1	1.5	1.2
	Total input	3.9	3.0	0.7	0.9	1.4	3.3
	Total productivity	-5.3	-1.9	-0.5	-0.8	0.1	-2.0
<b>Total</b>	Output	-0.2	0.8	0.5	1.7	3.0	0.4
	Total input	3.1	2.9	1.9	2.7	2.6	1.8
	Total productivity	-3.1	-2.0	-1.4	-1.0	0.3	-1.4

\*)

---

Suomen virallinen tilasto  
Finlands officiella statistik  
Official Statistics of Finland

2007

*Inquiries*

Sami Hautakangas (09) 1734 3540  
Director in charge:  
Ari Tyrkkö

[julkinen.tuottavuus@stat.fi](mailto:julkinen.tuottavuus@stat.fi)

[http://www.stat.fi/til/kktu/index\\_en.html](http://www.stat.fi/til/kktu/index_en.html)