

# Statistics on local government productivity 2009

## Productivity of local government improved in education and health care in 2009

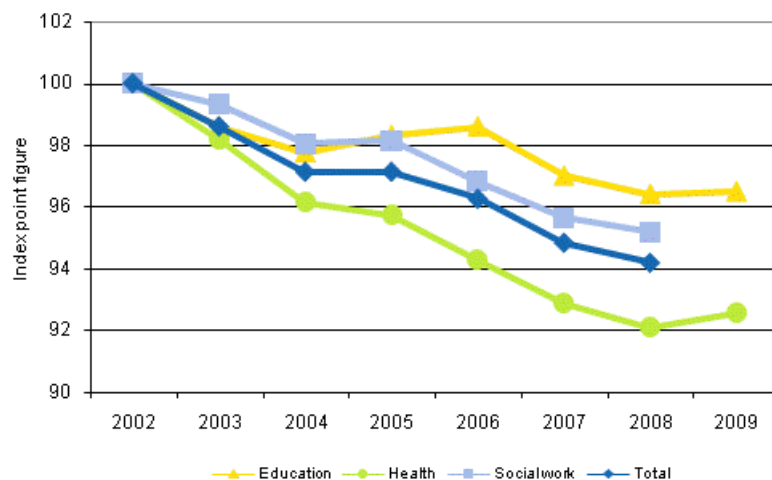
The total productivity of municipalities and joint municipal boards improved slightly in education and health care in 2009. This is indicated by Statistics Finland's Statistics on local government productivity. Productivity rose by 0.1 per cent in education and by 0.5 per cent in health care.

### Volume changes in the output and total input and changes in total productivity of local government by industry in 2009, per cent from the year before

2009	Education	Health
Output	-1.4	4.0
Total input	-1.5	3.5
Total productivity	0.1	0.5

In education, the volume of output decreased by 1.4 per cent but because the volume of total input decreased by more, productivity improved slightly. In health care, both the volume of output and the volume of total input grew. The volume of output grew by four per cent and the volume of total input by 3.5 per cent, which put the growth in productivity at 0.5 per cent.

**Development in the total productivity of education, health and social work of local government in 2002–2009 (2002=100)**



Data on the development of productivity in social work in 2009 cannot be published at the moment. For this reason, data are not published on productivity at the education, health care and social work total level, either. The ongoing changes in the structure of services are strongly reflected in the development of costs in social work. The data in the source statistics do not facilitate sufficiently detailed treatment of these changes in national accounts to allow productivity calculations.

The statistics on local government productivity are compiled at the level of the whole country and the data are not available by municipality or joint municipal board. The statistics are based direct on national accounts data on the local government sector.

# Contents

## Tables

### Appendix tables

Volume changes in the output and total input and changes in total productivity of local government by industry in 2001–2009, per cent from the year before.....4

## Appendix tables

### Volume changes in the output and total input and changes in total productivity of local government by industry in 2001–2009, per cent from the year before

		2001	2002	2003	2004	2005	2006	2007	2008	2009
Education	Output	0.1	0.7	0.3	0.5	0.1	-0.1	-0.9	-1.4	-1.4
	Total input	1.6	2.3	1.7	1.3	-0.4	-0.4	0.7	-0.7	-1.5
	Total productivity	-1.5	-1.6	-1.4	-0.9	0.6	0.3	-1.6	-0.6	0.1
Health	Output	0.3	0.5	1.1	3.5	4.3	0.1	1.0	3.0	4.0
	Total input	3.8	3.5	3.0	5.7	4.8	1.7	2.6	3.8	3.5
	Total productivity	-3.4	-2.9	-1.8	-2.1	-0.5	-1.5	-1.5	-0.8	0.5
Social work	Output	-1.6	1.0	0.1	0.0	1.7	1.2	0.6	3.7	..
	Total input	3.9	2.9	0.8	1.3	1.6	2.6	1.8	4.2	..
	Total productivity	-5.3	-1.8	-0.7	-1.3	0.1	-1.3	-1.2	-0.5	..
Total	Output	-0.2	0.7	0.6	1.6	2.3	0.3	0.3	1.8	..
	Total input	3.1	2.9	2.0	3.2	2.3	1.2	1.8	2.5	..
	Total productivity	-3.2	-2.2	-1.4	-1.5	0.0	-0.9	-1.5	-0.7	..

---

Suomen virallinen tilasto  
Finlands officiella statistik  
Official Statistics of Finland

Government Finance 2011

### Inquiries

Niina Suutarinen (09) 1734 3302

Director in charge:

Ari Tyrkkö

[julkinen.tuottavuustilasto@stat.fi](mailto:julkinen.tuottavuustilasto@stat.fi)

[http://www.stat.fi/til/kktu/index\\_en.html](http://www.stat.fi/til/kktu/index_en.html)

Source: Statistics on local government productivity 2009. Statistics Finland.