

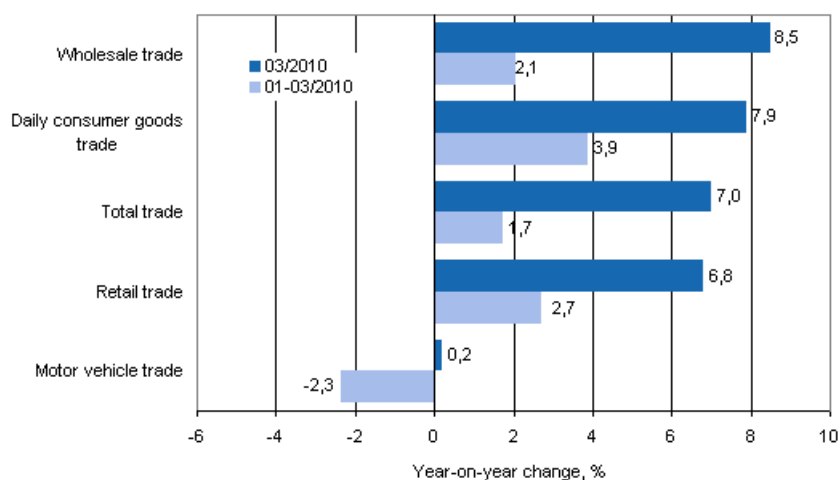
# Turnover of trade

2010, March

## Sales of retail trade grew by 6.8 per cent in March

According to Statistics Finland, retail trade sales rose by 6.8 per cent in March from March 2009. Sales volume grew by 5.7 per cent during the same time period. Wholesale trade sales went up by 8.5 per cent and motor vehicle sales by 0.2 per cent. In total trade sales grew by 7.0 per cent in March.

### Annual change in turnover in trade industries, % (TOL 2008)



Source: Statistics Finland

Sales in retail trade rose by 2.7 per cent and in wholesale trade by 2.1 per cent in January to March compared with the corresponding period of the previous year. By contrast, motor vehicle sales fell by 2.3 per cent. In total trade sales were up in January to March by 1.7 per cent on the respective period of the year before.

### Revised accounting practice in motor vehicle trade

Turnover in new car sales has been recorded according to a revised accounting practice since data concerning April 2009. Motor car tax is no longer included in turnover as in the past. From April 2009 onwards until March 2010 an estimation of the share of the motor car tax in the previous year's corresponding period has been removed from the annual change figures.

## *Tax reform causes revisions to data on indices of turnover*

Starting from data on January 2010, the indices of turnover will be compiled from the seasonal tax return data conforming to the Tax Administration's tax reform. According to our examinations the impact on these statistics from the implemented tax reform will remain quite small. However, slightly less data than before will be available for early 2010, which may mean that the time series of the indices of turnover in the early part of the year may become slightly revised in future releases. Further information about the impacts of the changes in the data on the indices of turnover can be found under [Revisions in these statistics](#). Information about the tax reform is also available on the Tax Administration's website at: [www.vero.fi](http://www.vero.fi).

# Contents

Appendix tables

Year-on-year change in turnover in trade industries by quarter, in the latest month and in the early part of the year, % (TOL 2008).....4

Figures

Turnover of motor vehicles, wholesale and retail trade, trend series (TOL 2008).....5

## Appendix tables

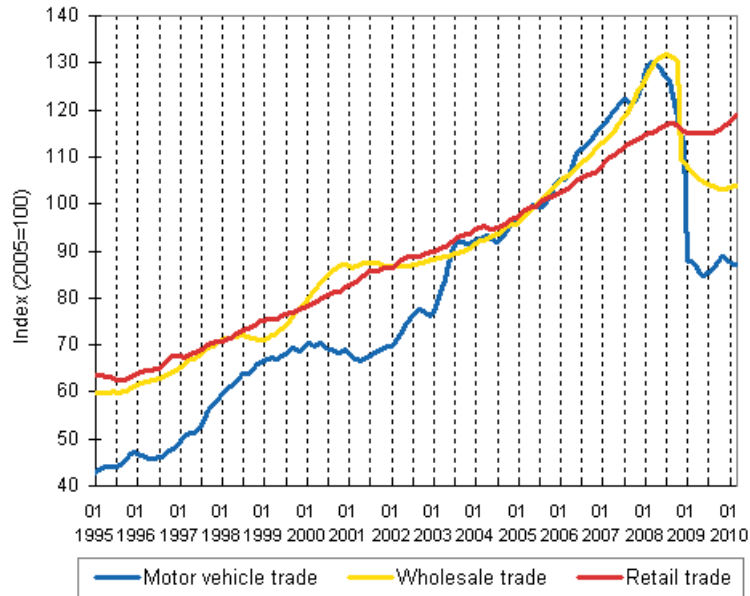
### Year-on-year change in turnover in trade industries by quarter, in the latest month and in the early part of the year, % (TOL 2008)

	Year-on-year change by quarter, % <sup>1)</sup>				Cumulative year-on-year change, % <sup>1)</sup>	Year-on-year change in the latest month, % <sup>1)</sup>
	04-06/2009	07-09/2009	10-12/2009	01-03/2010	01-03/2010	03/2010
Total trade (G)	-18,8	-17,8	-8,5	1,7	1,7	7,0
Motor vehicle trade (45)	-35,4	-32,6	-19,0	-2,3	-2,3	0,2
Wholesale trade (46)	-21,8	-21,6	-11,0	2,1	2,1	8,5
Retail trade (47)	-3,1	-2,5	0,7	2,7	2,7	6,8
Daily consumer goods trade (4711, 472)	2,8	1,7	2,1	3,9	3,9	7,9

1) Year-on-year change compares the value for an examined time period to the value for the corresponding time period twelve months back.

# Figures

Turnover of motor vehicles, wholesale and retail trade, trend series (TOL 2008)



### Inquiries

Marko Tuomiario (09) 1734 2705  
Director in charge:  
Hannele Orjala  
palvelut.suhdanne@stat.fi  
www.stat.fi