

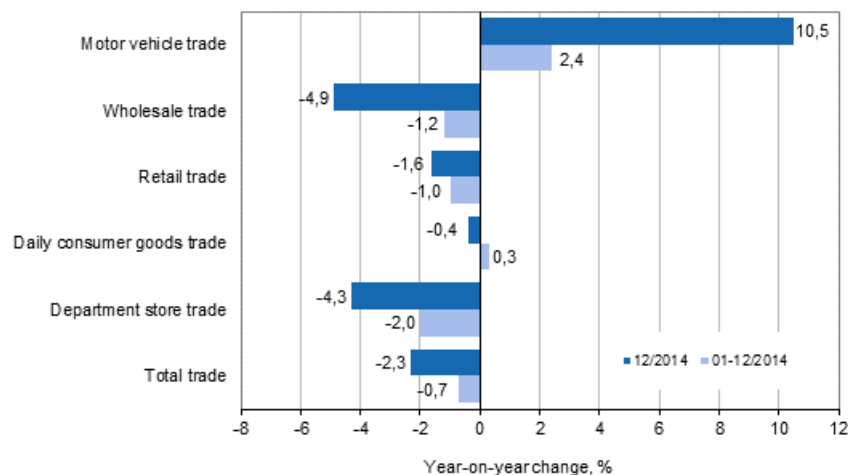
Turnover of trade

2014, December

Christmas sales in retail trade went down by 1.6 per cent from one year before

According to Statistics Finland, retail trade sales fell by 1.6 per cent in December from December 2013. The weak development in daily consumer goods trade does not alone explain the decrease in retail trade sales, as sales in daily consumer goods trade contracted by 0.4 per cent from the year before. In contrast, sales in department store trade went down by 4.3 per cent year-on-year. Wholesale trade sales also fell by 4.9 per cent from December 2013. In turn, motor vehicle sales grew by 10.5 per cent from twelve months back. Thus, sales decreased in total trade by 2.3 per cent from December 2013.

Annual change in turnover in trade industries, % (TOL 2008)



Source: Statistics Finland

In retail trade, the sales volume decreased by 1.1 per cent and in wholesale trade by 2.5 per cent from December 2013. In turn, the sales volume in motor vehicle trade increased by 10.6 per cent from the previous year. The growth was affected by increased sales of new motor vehicles, because Statistics Finland's data indicate that the number of first registrations of motor vehicles was also 7.6 per cent higher in December than in December 2013. The volume of total sales was 0.6 per cent lower in December than

in the year before. The volume index of sales is calculated by removing the effect of price changes from the value index series.

Retail trade sales went down by 1.0 per cent in 2014 from 2013

During 2014, sales contracted in total by 1.0 per cent in retail trade and by 1.2 per cent in wholesale trade compared with 2013. In contrast, motor vehicle sales grew by 2.4 per cent from 2013. Total trade sales went down by 0.7 per cent over the corresponding period.

Contents

Tables

Appendix tables

Appendix table 1. Year-on-year change in turnover in trade industries, % (TOL 2008).....	4
--	---

Figures

Appendix figures

Appendix figure 1. Turnover of motor vehicles, wholesale and retail trade, trend series (TOL 2008).....	5
---	---

Revisions in these statistics.....	6
------------------------------------	---

Appendix tables

Appendix table 1. Year-on-year change in turnover in trade industries, % (TOL 2008)

	Year-on-year change by quarter, % ¹⁾				Cumulative year-on-year change, % ¹⁾	Year-on-year change in the latest month, % ¹⁾
	01-03/2014	04-06/2014	07-09/2014	10-12/2014		
Total trade (G)	-0,3	-0,2	-0,1	-2,2	-0,7	-2,3
Motor vehicle trade (45)	8,9	-0,2	0,6	0,9	2,4	10,5
Wholesale trade (46)	-1,9	0,0	0,3	-3,1	-1,2	-4,9
Retail trade (47)	-0,7	-0,6	-1,0	-1,7	-1,0	-1,6
Daily consumer goods trade (4711, 472) ²⁾	-0,5	1,2	1,0	-0,5	0,3	-0,4
Department store trade (4719) ³⁾	0,4	-2,2	-1,7	-3,8	-2,0	-4,3

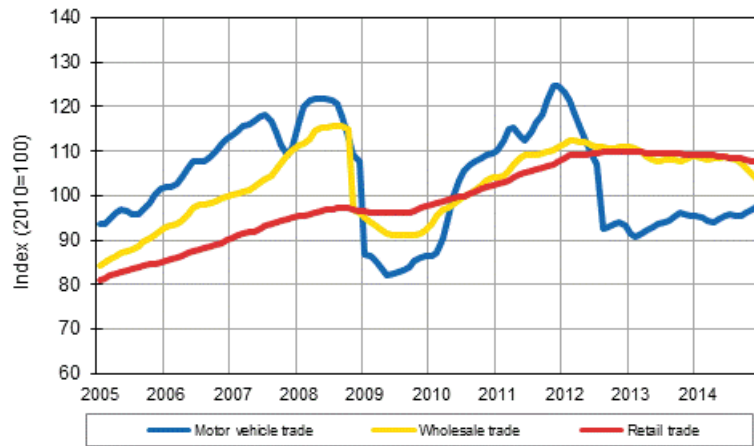
1) Year-on-year change compares the value for an examined time period to the value for the corresponding time period twelve months back.

2) According to the Business Register, the share of daily consumer goods (4711, 472) of turnover in retail trade was 47.6 per cent in 2012.

3) According to the Business Register, the share of retail sale in department stores (4719) of turnover in retail trade was 11.8 per cent in 2012.

Appendix figures

Appendix figure 1. Turnover of motor vehicles, wholesale and retail trade, trend series (TOL 2008)



Source: Statistics Finland

Revisions in these statistics

The data of the statistics have become revised according to the table below. For more information about data revisions, see Section 3 of the quality description (only in Finnish).

Revision of annual changes in turnover in main industries¹⁾

Industry / Reference period		Year-on-year change,%		Revision, percentage point
		1st release	Latest release (2015-02-12)	
G Wholesale and retail trade	07/2014	0,2	-0,2	-0,4
	08/2014	-2,4	-2,8	-0,4
	09/2014	1,5	2,8	1,3
	10/2014	-0,5	-0,4	0,1
	11/2014	-3,7	-4,1	-0,4
45 Wholesale and retail trade and repair of motor vehicles and motorcycles	07/2014	-0,9	-0,6	0,3
	08/2014	-0,3	-0,2	0,1
	09/2014	0,6	2,6	2,0
	10/2014	-4,1	-3,3	0,8
	11/2014	-2,7	-2,5	0,2
46 Wholesale trade, except of motor vehicles and motorcycles	07/2014	1,0	0,2	-0,8
	08/2014	-3,2	-3,5	-0,3
	09/2014	2,5	4,3	1,8
	10/2014	-0,2	-0,6	-0,4
	11/2014	-3,7	-4,1	-0,4
47 Retail trade, except of motor vehicles and motorcycles	07/2014	-0,6	-0,6	0,0
	08/2014	-1,7	-2,6	-0,9
	09/2014	0,0	0,2	0,2
	10/2014	0,3	1,1	0,8
	11/2014	-4,2	-4,6	-0,4
Retail sale in non-specialised stores (4711, 472)	07/2014	1,4	2,4	1,0
	08/2014	-0,2	-0,8	-0,6
	09/2014	1,4	1,2	-0,2
	10/2014	2,3	3,2	0,9
	11/2014	-4,5	-4,3	0,2
Department store trade (4719)	07/2014	-1,6	-1,0	0,6
	08/2014	-1,4	-1,3	0,1
	09/2014	-2,5	-2,9	-0,4
	10/2014	0,1	-0,2	-0,3
	11/2014	-6,8	-6,8	0,0

1) The 1st release refers to the time when data for the reference period were released for the first time. The revision describes the difference of annual change percentages between the first and latest release.

Revision of long-term annual changes in turnover in main industries

Industry	Year	Average ¹⁾	Average for absolute values ²⁾
Total trade (G)	2011	-0,8	1,1
	2012	-0,7	0,9
	2013	-0,2	0,5
Motor vehicle trade (45)	2011	-2,6	2,6
	2012	0,6	2,3
	2013	-0,5	0,9

Industry	Year	Average ¹⁾	Average for absolute values ²⁾
Wholesale trade (46)	2011	-0,5	1,2
	2012	-0,8	1,1
	2013	-0,1	0,7
Retail trade (47)	2011	-1,1	1,1
	2012	-0,7	0,9
	2013	-0,5	0,8
Daily consumer goods trade (4711, 472)	2011	-0,7	0,7
	2012	-0,5	0,7
	2013	0,1	0,5
Department store trade (4719)	2011	-0,1	0,4
	2012	0,1	0,4
	2013	-0,1	0,4

1) Average for data revised between the first and seventh release in the statistical reference year.

2) Average for absolute values of differences between the first and seventh release.

Inquiries

Jarkko Niemistö 029 551 2951

Milka Suomalainen 029 551 2912

Director in charge:

Hannele Orjala

palvelut.suhdanne@stat.fi

www.stat.fi

Source: Turnover of trade, Statistics Finland