

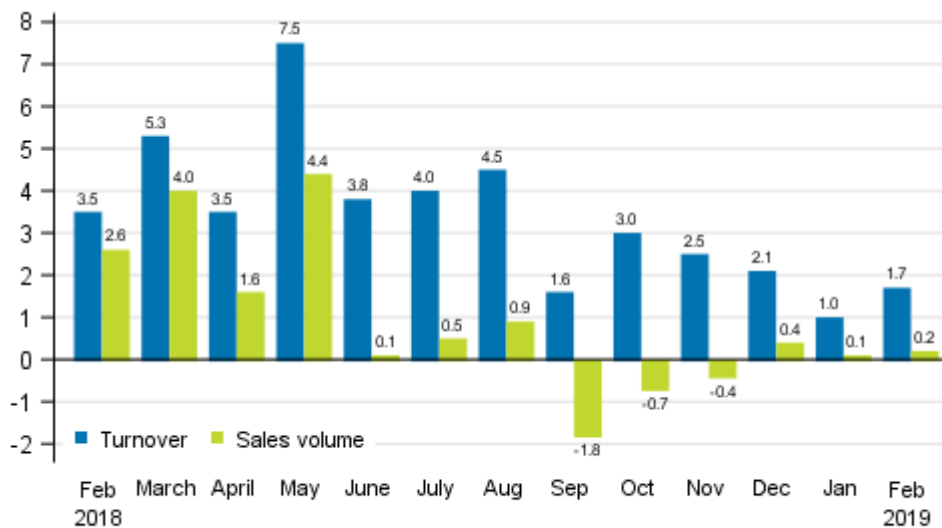
# Turnover of trade

2019, February

## Turnover of trade grew by 1.7 per cent in February

According to Statistics Finland, the working day adjusted turnover of total trade grew by 1.7 per cent in February compared to February 2018. The development of turnover was positive in all industries of trade. The working day adjusted sales volume of total trade, from which the impact of price changes has been eliminated, grew by 0.2 per cent in February. The weaker development of sales volume than turnover particularly in wholesale trade and daily consumer goods trade is due to a rise in prices.

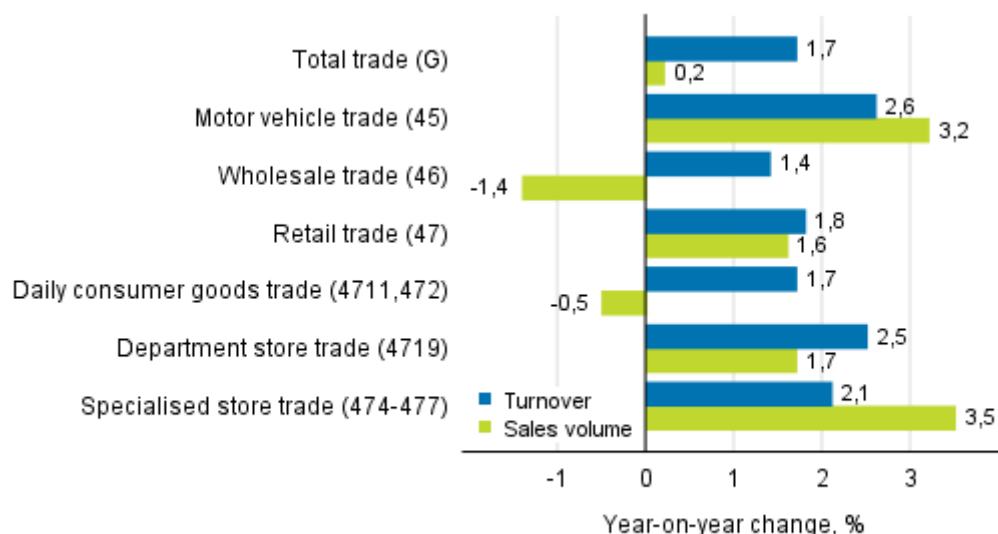
### Annual change in working day adjusted turnover and sales volume in total trade (G), %



Source: Statistics Finland

The working day adjusted turnover grew in February most in motor vehicle trade, altogether by 2.6 per cent. Sales volume also increased in motor vehicle trade by 3.2 per cent from one year ago. In wholesale trade, the working day adjusted turnover grew by 1.4 per cent, whereas the sales volume of the industry decreased by the same amount. The working day adjusted turnover of retail trade grew by 1.8 per cent and sales volume by 1.6 per cent from February of the previous year.

**Annual change in working day adjusted turnover and sales volume in industries of trade, February 2019, % (TOL 2008)**

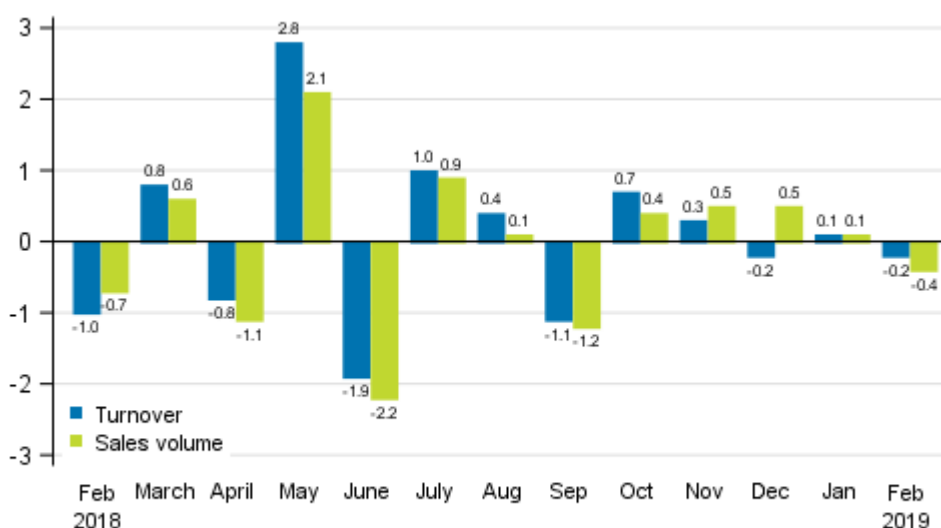


Source: Statistics Finland

**Development of turnover and sales volume slightly weaker than in the previous month**

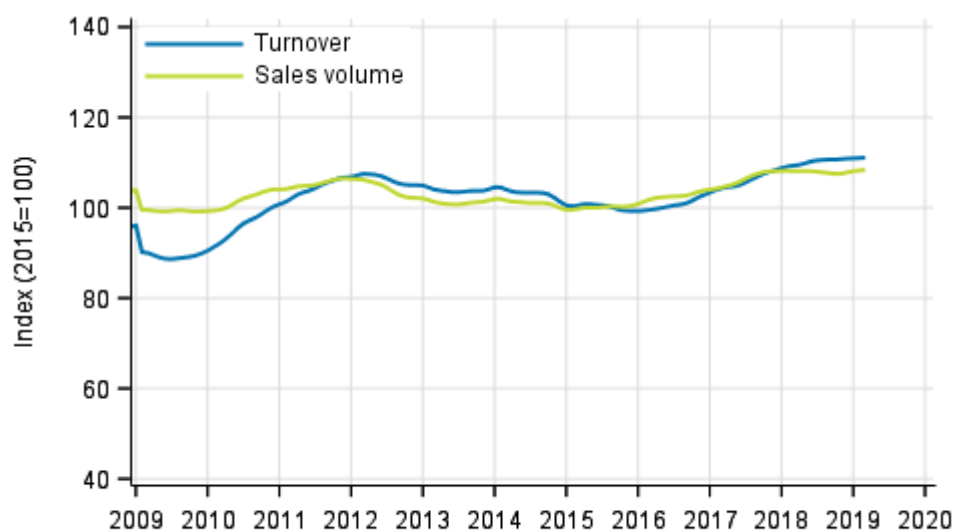
The seasonally adjusted turnover of total trade went down by 0.2 per cent in February compared to January. The sales volume also decreased by 0.4 per cent over the same period. In January, turnover and sales volume grew slightly by 0.1 per cent compared to the previous month.

**Change in seasonally adjusted turnover and sales volume in total trade (G) from the previous month, %**



Source: Statistics Finland

### Trend of turnover and sales volume in total trade



Source: Statistics Finland

The calculation of indices of turnover of trade is based on the Tax Administration's data on self-assessed taxes, which are supplemented with Statistics Finland's sales inquiry. The volume index of sales is calculated by removing the effect of price changes from the value index series.

The factors caused by the variation in the number of weekdays are taken into account in adjustment for working days. This means taking into consideration the lengths of months, different weekdays and holidays. In addition, seasonal variation is eliminated from seasonally adjusted series, on account of which it makes sense to compare observations of two successive months as well.

The data for the latest month are preliminary and they may become significantly revised particularly on more detailed industry levels in coming months.

# Contents

## Tables

### Appendix tables

Appendix table 1. Annual change of working day adjusted turnover and sales volume in industries of trade, % (TOL 2008).....5

Revisions in these statistics.....6

# Appendix tables

**Appendix table 1. Annual change of working day adjusted turnover and sales volume in industries of trade, % (TOL 2008)**

		Year-on-year change by three-month period, % <sup>1)</sup>				Year-on-year change in the latest month, % <sup>1)</sup>
		03-05/2018	06-08/2018	09-11/2018	12/18-02/19	02/2019
G Total trade	Turnover	5.5	4.1	2.4	1.6	1.7
	Sales volume	3.3	0.5	-1.0	0.2	0.2
45 Motor vehicle trade	Turnover	6.2	5.2	-1.1	-0.3	2.6
	Sales volume	5.8	5.0	-0.7	0.5	3.2
46 Wholesale trade	Turnover	6.2	5.2	3.3	1.8	1.4
	Sales volume	3.0	-0.6	-2.3	-0.8	-1.4
47 Retail trade	Turnover	3.8	2.0	2.3	2.1	1.8
	Sales volume	2.9	0.8	1.3	1.8	1.6
Daily consumer goods trade (4711, 472) <sup>2)</sup>	Turnover	4.2	4.2	2.7	2.2	1.7
	Sales volume	1.0	0.9	-0.7	-0.4	-0.5
Department store trade (4719) <sup>3)</sup>	Turnover	3.9	-0.8	0.9	1.7	2.5
	Sales volume	2.8	-1.6	-0.1	0.9	1.7
Specialised store trade (474-477)	Turnover	3.0	-0.5	1.6	1.6	2.1
	Sales volume	4.5	1.1	3.1	3.1	3.5

1) Year-on-year change compares the value for an examined time period to the value for the corresponding time period twelve months back.

2) According to the Structural business and financial statement statistics, the share of daily consumer goods (4711, 472) of turnover in retail trade was 49.8 per cent in 2016.

3) According to the Structural business and financial statement statistics, the share of retail sale in department stores (4719) of turnover in retail trade was 10.9 per cent in 2016.

## Revisions in these statistics

The data of the statistics have become revised according to the table below. For more information about data revisions, see Section 3 of the quality description (only in Finnish).

### Revision of annual changes in working day adjusted turnover in industries of trade<sup>1)</sup>

Industry / Reference period		Year-on-year change, %		Revision, percentage point
		1st release	Latest release (2019-04-15)	
G Total trade	09/2018	1.3	1.6	0.3
	10/2018	1.4	3.0	1.6
	11/2018	2.3	2.5	0.2
	12/2018	1.6	2.1	0.5
	01/2019	0.6	1.0	0.4
45 Motor vehicle trade	09/2018	-5.6	-2.1	3.5
	10/2018	-0.2	1.4	1.6
	11/2018	-3.7	-2.7	1.0
	12/2018	1.5	0.0	-1.5
	01/2019	-4.4	-3.2	1.2
46 Wholesale trade	09/2018	1.6	1.9	0.3
	10/2018	2.1	4.0	1.9
	11/2018	3.8	3.9	0.1
	12/2018	0.7	1.8	1.1
	01/2019	1.9	2.2	0.3
47 Retail trade	09/2018	3.9	2.7	-1.2
	10/2018	1.4	1.8	0.4
	11/2018	2.5	2.5	0.0
	12/2018	3.0	3.3	0.3
	01/2019	0.4	0.9	0.5
Daily consumer goods trade (4711, 472)	09/2018	3.0	2.7	-0.3
	10/2018	1.9	2.6	0.7
	11/2018	2.7	2.7	0.0
	12/2018	4.0	4.2	0.2
	01/2019	-0.3	0.1	0.4
Department store trade (4719)	09/2018	4.0	3.7	-0.3
	10/2018	-1.3	-1.4	-0.1
	11/2018	1.2	0.7	-0.5
	12/2018	2.2	2.2	0.0
	01/2019	0.6	0.3	-0.3

1) The 1st release refers to the time when data for the reference period were released for the first time. The revision describes the difference of annual change percentages between the first and latest release.

### Revision of long-term annual changes in turnover in industries of trade

Industry / Year		Average <sup>1)</sup>	Average for absolute values <sup>2)</sup>
G Total trade	2015	0.6	0.7
	2016	0.3	0.7
	2017	0.0	0.6
45 Motor vehicle trade	2015	0.3	0.9
	2016	0.3	0.8
	2017	0.1	0.7

Industry / Year		Average <sup>1)</sup>	Average for absolute values <sup>2)</sup>
46 Wholesale trade	2015	0.9	1.1
	2016	0.8	1.1
	2017	0.0	0.9
47 Retail trade	2015	0.1	0.5
	2016	-0.2	0.7
	2017	-0.2	0.6
Daily consumer goods trade (4711, 472)	2015	-0.2	0.4
	2016	-0.3	0.5
	2017	-0.1	0.5
Department store trade (4719)	2015	-0.3	0.4
	2016	-0.4	0.4
	2017	0.1	0.9

1) In 2015, the average was calculated from data revised between the first and seventh release months in the statistical reference year. The average for 2016 and 2017 was calculated upon completion of the data for the first and last release months in the statistical reference year, when the official structural business and financial statement statistics are also published. The data were calculated from annual changes in the original index series.

2) In 2015, the average was calculated from the absolute values of differences between the first and seventh release months. The average for 2016 and 2017 was calculated from the absolute values of differences between the first and last release months in the statistical reference year, when the official structural business and financial statement statistics are also published. The data were calculated from annual changes in the original index series.

## Inquiries

Suvi Kiema 029 551 3509

Seija Karttunen 029 551 2741

Director in charge:

Mari Ylä-Jarkko

[palvelut.suhdanne@stat.fi](mailto:palvelut.suhdanne@stat.fi)

[www.stat.fi](http://www.stat.fi)

Source: Turnover of trade, Statistics Finland