

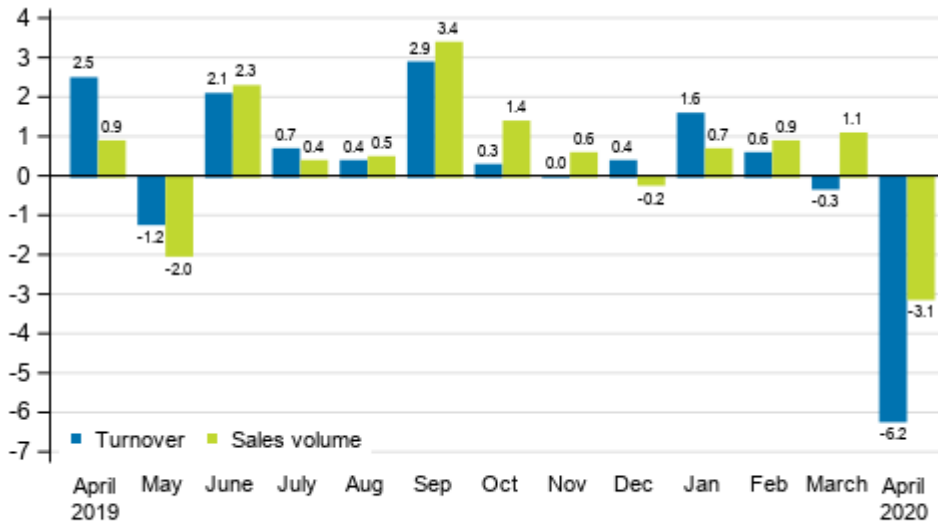
# Turnover of trade

2020, April

## Turnover and sales volume in trade fell in April

According to Statistics Finland, turnover in total trade adjusted for working days fell in April by 6.2 per cent from April 2019. Over the same period, the working day adjusted volume of sales, from which the impact of prices has been eliminated, decreased by 3.1 per cent. Turnover fell in all main industries of trade – in motor vehicle trade by over one fifth. The exceptional situation caused by coronavirus had an effect on the development of trade industries.

### Annual change in working day adjusted turnover and sales volume in total trade (G), %

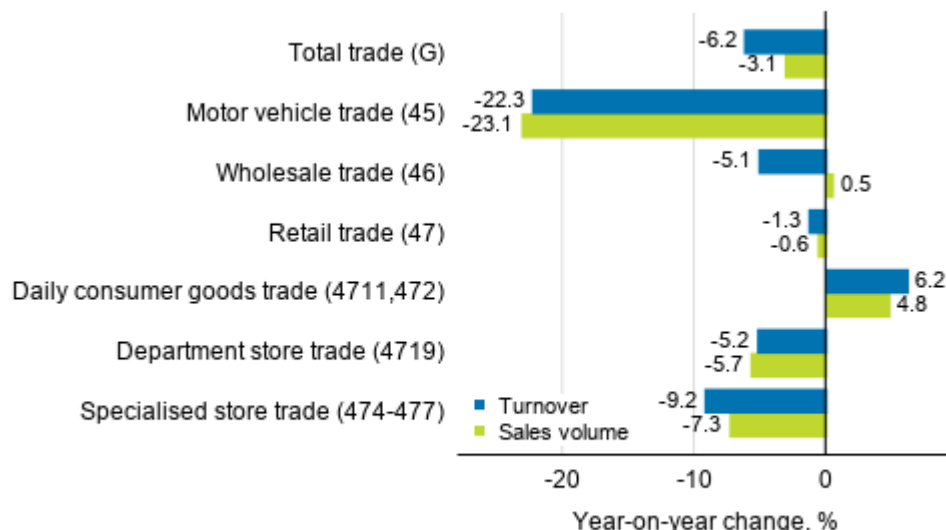


Source: Statistics Finland

In wholesale trade, working day adjusted turnover decreased by 5.1 per cent in April, while the sales volume of the industry grew by 0.5 per cent year-on-year. Trade developed weakest in April in motor vehicle trade where turnover went down by as much as 22.3 per cent and sales volume by 23.1 per cent year-on-year. In retail trade, working day adjusted turnover fell by 1.3 per cent and sales volume by 0.6 per cent. As in March, retail trade was boosted in April especially by daily consumer goods trade, as the working day adjusted turnover of the industry concerned grew by 6.2 per cent. Turnover in specialised store trade contracted most of retail trade industries, down by 9.2 per cent from the year before. In

department store trade turnover fell, in turn, by 5.2 per cent. The weaker development in turnover than in sales volume, especially in wholesale trade, is explained by fallen prices.

**Annual change in working day adjusted turnover and sales volume in industries of trade, April 2020, % (TOL 2008)**

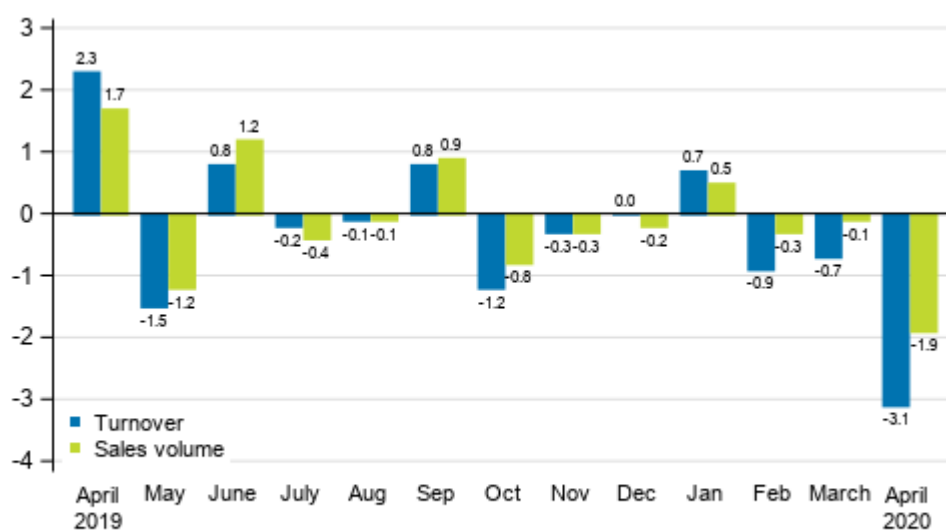


Source: Statistics Finland

**Turnover and sales volume declined clearly from the previous month**

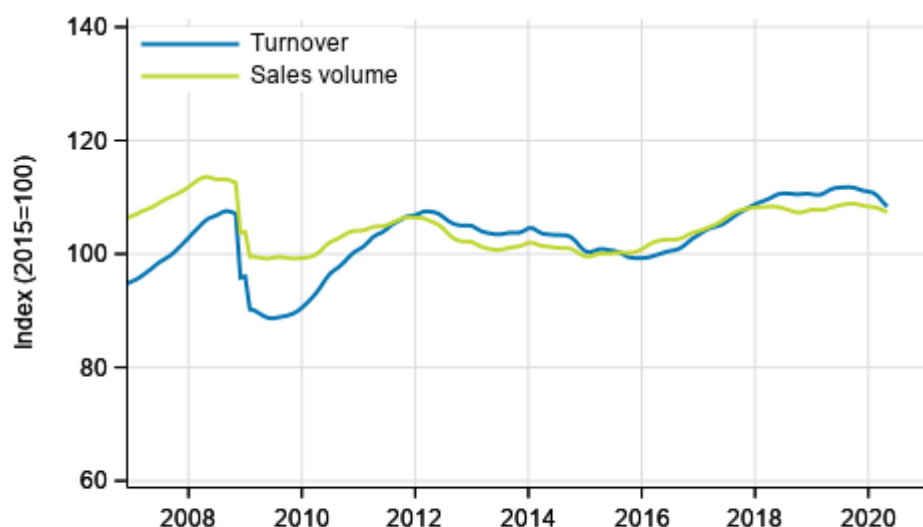
Seasonally adjusted turnover in total trade fell by 3.1 per cent in April compared to March. Sales volume decreased by 1.9 per cent during the same period. In March, turnover fell by 0.7 per cent and sales volume by 0.1 per cent from the month before.

**Change in seasonally adjusted turnover and sales volume in total trade (G) from the previous month, %**



Source: Statistics Finland

### Trend of turnover and sales volume in total trade



Source: Statistics Finland

The calculation of indices of turnover of trade is based on the Tax Administration's data on self-assessed taxes, which are supplemented with Statistics Finland's sales inquiry. The volume index of sales is calculated by removing the effect of price changes from the value index series.

The factors caused by the variation in the number of weekdays are taken into account in adjustment for working days. This means taking into consideration the lengths of months, different weekdays and holidays. In addition, seasonal variation is eliminated from seasonally adjusted series, on account of which it makes sense to compare observations of two successive months as well.

The data for the latest month are preliminary and they may become significantly revised particularly on more detailed industry levels in coming months.

# Contents

## Tables

### Appendix tables

Appendix table 1. Annual change of working day adjusted turnover and sales volume in industries of trade, % (TOL 2008).....5

Revisions in these statistics.....6

# Appendix tables

**Appendix table 1. Annual change of working day adjusted turnover and sales volume in industries of trade, % (TOL 2008)**

		Year-on-year change by three-month period, % <sup>1)</sup>				Cumulative year-on-year change, % <sup>1)</sup>	Year-on-year change in the latest month, % <sup>1)</sup>
		05-07/2019	08-10/2019	11/19-01/20	02-04/2020		
G Total trade	Turnover	0.5	1.2	0.6	-2.1	-1.2	-6.2
	Sales volume	0.2	1.7	0.3	-0.4	-0.2	-3.1
45 Motor vehicle trade	Turnover	0.2	5.7	5.8	-6.5	-3.9	-22.3
	Sales volume	0.3	5.5	4.9	-7.2	-4.7	-23.1
46 Wholesale trade	Turnover	-0.3	-1.4	-0.9	-2.7	-2.0	-5.1
	Sales volume	-0.9	-0.3	-1.1	0.6	0.3	0.5
47 Retail trade	Turnover	1.9	3.7	1.3	1.5	1.9	-1.3
	Sales volume	2.1	3.8	1.2	1.4	1.7	-0.6
Daily consumer goods trade (4711, 472) <sup>2)</sup>	Turnover	1.0	2.7	2.8	5.9	5.5	6.2
	Sales volume	-0.6	0.9	0.7	4.0	3.6	4.8
Department store trade (4719) <sup>3)</sup>	Turnover	4.4	5.7	0.3	-4.0	-3.1	-5.2
	Sales volume	4.0	4.7	-0.8	-5.0	-4.1	-5.7
Specialised store trade (474-477) <sup>4)</sup>	Turnover	2.5	4.4	0.6	-0.8	0.2	-9.2
	Sales volume	4.4	6.0	2.0	0.7	1.7	-7.3

1) Year-on-year change compares the value for an examined time period to the value for the corresponding time period twelve months back.

2) According to the Structural business and financial statement statistics, the share of daily consumer goods (4711, 472) of turnover in retail trade was 50.9 per cent in 2018.

3) According to the Structural business and financial statement statistics, the share of retail sale in department stores (4719) of turnover in retail trade was 9.6 per cent in 2018.

4) According to the Structural business and financial statement statistics, the share of retail sale in specialised stores (474-477) of turnover in retail trade was 35.2 per cent in 2018.

## Revisions in these statistics

The data of the statistics have become revised according to the table below. For more information about data revisions, see Section 3 of the quality description (only in Finnish).

### Revision of annual changes in working day adjusted turnover in industries of trade<sup>1)</sup>

Industry / Reference period		Year-on-year change, %		Revision, percentage point
		1st release	Latest release (2020-06-15)	
G Total trade	11/2019	0.5	0.0	-0.5
	12/2019	0.1	0.4	0.3
	01/2020	2.1	1.6	-0.5
	02/2020	1.2	0.6	-0.6
	03/2020	-2.1	-0.3	1.8
45 Motor vehicle trade	11/2019	4.8	4.4	-0.4
	12/2019	9.5	9.6	0.1
	01/2020	4.3	3.9	-0.4
	02/2020	8.2	7.9	-0.3
	03/2020	-4.6	-3.1	1.5
46 Wholesale trade	11/2019	-1.3	-1.9	-0.6
	12/2019	-2.0	-1.0	1.0
	01/2020	0.7	0.3	-0.4
	02/2020	-1.3	-2.2	-0.9
	03/2020	-2.4	-0.8	1.6
47 Retail trade	11/2019	2.1	1.4	-0.7
	12/2019	0.6	0.0	-0.6
	01/2020	3.6	3.1	-0.5
	02/2020	3.5	4.1	0.6
	03/2020	-0.2	2.0	2.2
Daily consumer goods trade (4711, 472)	11/2019	3.1	2.8	-0.3
	12/2019	1.9	1.5	-0.4
	01/2020	3.8	4.4	0.6
	02/2020	2.6	3.4	0.8
	03/2020	6.4	7.7	1.3
Department store trade (4719)	11/2019	3.8	4.1	0.3
	12/2019	-2.3	-2.0	0.3
	01/2020	-0.3	-0.1	0.2
	02/2020	5.2	6.5	1.3
	03/2020	-12.0	-11.7	0.3
Specialised store trade (474-477)	11/2019	0.9	-0.4	-1.3
	12/2019	-0.3	-0.5	-0.2
	01/2020	5.7	3.4	-2.3
	02/2020	5.9	9.1	3.2
	03/2020	-6.3	-0.7	5.6

1) The 1st release refers to the time when data for the reference period were released for the first time. The revision describes the difference of annual change percentages between the first and latest release.

## Revision of long-term annual changes in working day adjusted turnover in industries of trade

Industry / Year		Average <sup>1)</sup>	Average for absolute values <sup>2)</sup>
G Total trade	2016	0.3	0.7
	2017	0.0	0.6
	2018	0.2	0.6
45 Motor vehicle trade	2016	0.3	0.8
	2017	0.1	0.6
	2018	0.6	1.1
46 Wholesale trade	2016	0.7	1.0
	2017	0.0	0.8
	2018	0.3	0.8
47 Retail trade	2016	-0.2	0.7
	2017	-0.2	0.6
	2018	-0.1	0.5
Daily consumer goods trade (4711, 472)	2016	-0.3	0.5
	2017	-0.2	0.5
	2018	0.3	0.4
Department store trade (4719)	2016	-0.4	0.4
	2017	0.1	0.9
	2018	-0.3	0.3

1) The average have been calculated upon completion of the data for the first and last release months in the statistical reference year, when the official structural business and financial statement statistics are also published.

2) The average have been calculated from the absolute values of differences between the first and last release months in the statistical reference year, when the official structural business and financial statement statistics are also published.

## Inquiries

Suvi Kiema 029 551 3509

Aki Niskanen 029 551 2657

Director in charge:

Mari Ylä-Jarkko

[palvelut.suhdanne@stat.fi](mailto:palvelut.suhdanne@stat.fi)

[www.stat.fi](http://www.stat.fi)

Source: Turnover of trade, Statistics Finland