

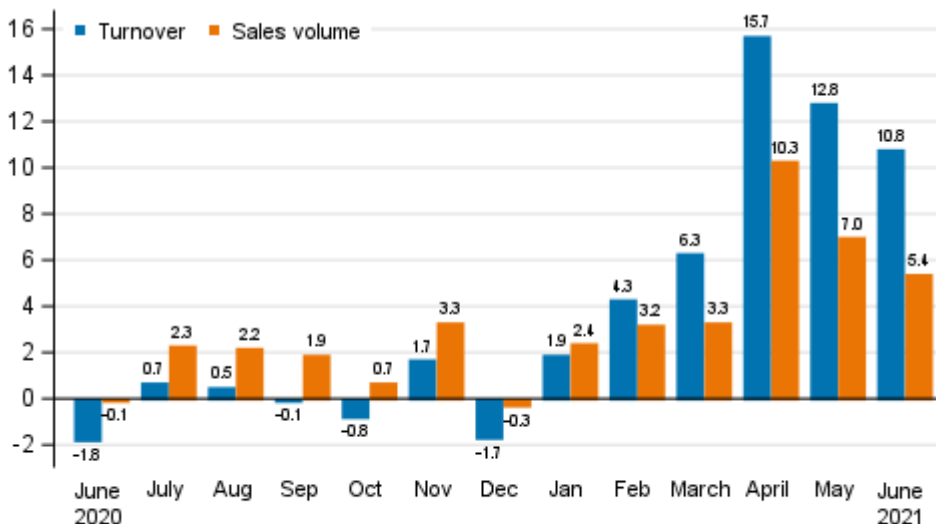
Turnover of trade

2021, June

Turnover and sales volume increased in all industries of trade in June

According to Statistics Finland, turnover in total trade adjusted for working days grew in June by 10.8 per cent from June 2020. Over the same period, the working day adjusted volume of sales in total trade, from which the impact of prices has been eliminated, increased by 5.4 per cent. Turnover grew strongly especially in the industries of motor vehicle trade and wholesale trade. The positive development in total trade that started in January of the current year also continued in June. The development of trade industries was partly due to the exceptional situation caused by the corona pandemic one year earlier.

Annual change in working day adjusted turnover and sales volume in total trade (G), %



Source: Statistics Finland

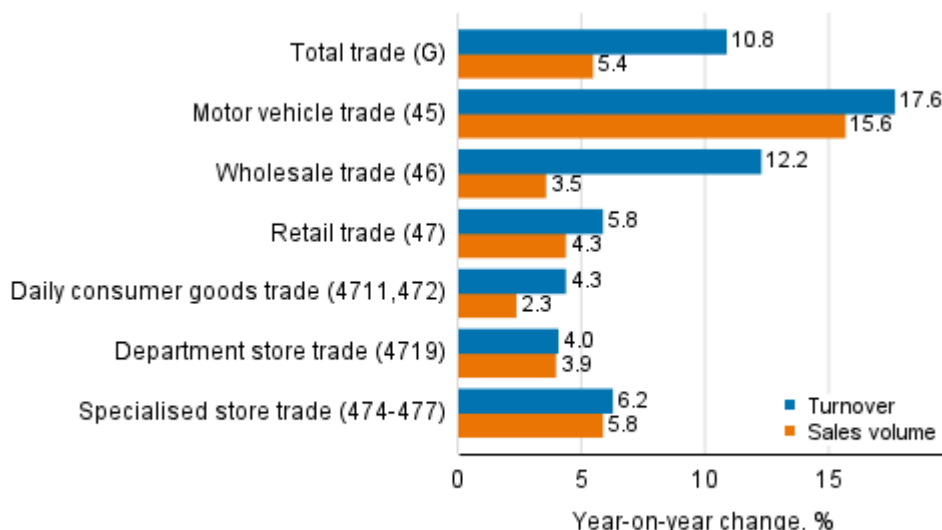
Strong turnover growth continued in motor vehicle and wholesale trade in June

Adjusted for working days, turnover and sales volume increased in all industries of trade in June. Among the industries of trade, motor vehicle trade grew most. Motor vehicle trade has developed briskly throughout the early part of the year. Turnover in motor vehicle trade rose in June by as much as 17.6 per cent and sales volume by 15.6 per cent from one year back.

The positive development in the biggest industry in trade, wholesale trade, which started in February, also continued in June. Turnover grew by 12.2 per cent and sales volume by 3.5 per cent year-on-year. The more favourable development in turnover than in sales volume in wholesale trade is explained by risen prices especially of processed petroleum products.

In retail trade, working day adjusted turnover grew in June in total by 5.8 per cent and sales volume by 4.3 per cent. Among retail trade industries, specialised store trade grew clearly fastest, as turnover went up by 6.2 per cent and sales volume by 5.8 per cent. Turnover in daily consumer goods trade rose by 4.3 per cent and sales volume by 2.3 per cent from June 2020. Turnover in department store trade grew by 4.0 per cent and sales volume by 3.9 per cent year-on-year.

Annual change in working day adjusted turnover and sales volume in industries of trade, June 2021, % (TOL 2008)

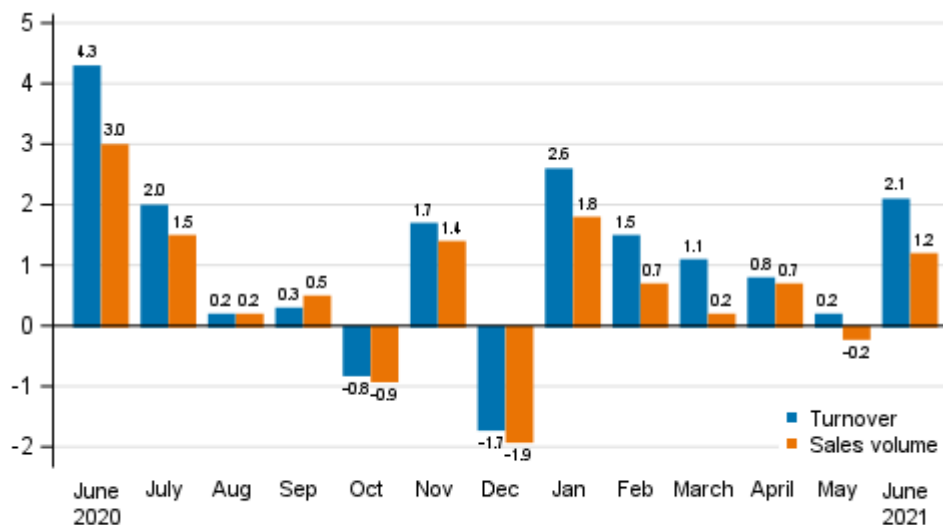


Source: Statistics Finland

Both turnover and sales volume grew compared to May

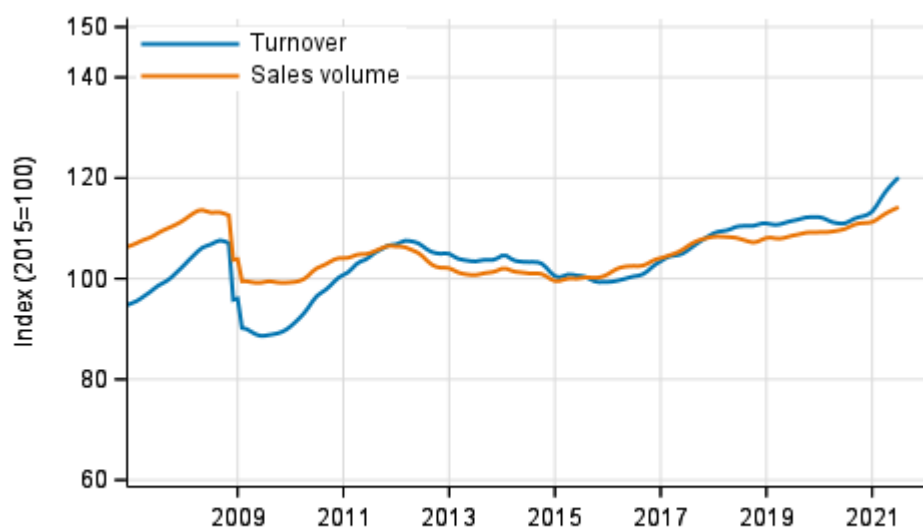
Seasonally adjusted turnover in total trade grew by 2.1 per cent in June compared to May. Seasonally adjusted sales volume grew by 1.2 per cent during the same period. In May, turnover and sales volume both remained almost on level with the previous month.

Change in seasonally adjusted turnover and sales volume in total trade (G) from the previous month, %



Source: Statistics Finland

Trend of turnover and sales volume in total trade



Source: Statistics Finland

The calculation of indices of turnover of trade is based on the Tax Administration’s data on self-assessed taxes, which are supplemented with Statistics Finland’s sales inquiry. The volume index of sales is calculated by removing the effect of price changes from the value index series.

The factors caused by the variation in the number of weekdays are taken into account in adjustment for working days. This means taking into consideration the lengths of months, different weekdays and holidays. In addition, seasonal variation is eliminated from seasonally adjusted series, on account of which it makes sense to compare observations of two successive months as well.

The data for the latest month are preliminary and they may become significantly revised particularly on more detailed industry levels in coming months.

Contents

Tables

Appendix tables

Appendix table 1. Annual change of working day adjusted turnover and sales volume in industries of trade, % (TOL 2008).....5

Revisions in these statistics.....6

Appendix tables

Appendix table 1. Annual change of working day adjusted turnover and sales volume in industries of trade, % (TOL 2008)

		Year-on-year change by three-month period, % ¹⁾				Cumulative year-on-year change, % ¹⁾	Year-on-year change in the latest month, % ¹⁾
		07-09/2020	10-12/2020	01-03/2021	04-06/2021		
G Total trade	Turnover	0.3	-0.3	4.2	13.0	8.7	10.8
	Sales volume	2.1	1.2	3.0	7.5	5.3	5.4
45 Motor vehicle trade	Turnover	2.4	0.3	10.7	32.0	20.9	17.6
	Sales volume	1.0	-0.9	9.0	29.4	18.7	15.6
46 Wholesale trade	Turnover	-2.7	-3.3	1.6	12.3	7.0	12.2
	Sales volume	1.1	-0.5	-0.1	3.5	1.7	3.5
47 Retail trade	Turnover	4.2	4.6	5.2	7.2	6.3	5.8
	Sales volume	4.3	5.1	5.1	6.0	5.6	4.3
Daily consumer goods trade (4711, 472) ²⁾	Turnover	6.2	7.9	5.5	2.8	4.1	4.3
	Sales volume	4.3	6.6	3.8	0.4	2.0	2.3
Department store trade (4719) ³⁾	Turnover	5.0	4.2	8.8	7.6	8.1	4.0
	Sales volume	3.8	3.7	8.5	7.0	7.7	3.9
Specialised store trade (474-477) ⁴⁾	Turnover	1.9	1.4	1.3	11.2	6.6	6.2
	Sales volume	3.4	3.2	2.7	11.2	7.2	5.8

1) Year-on-year change compares the value for an examined time period to the value for the corresponding time period twelve months back.

2) According to the Structural business and financial statement statistics, the share of daily consumer goods (4711, 472) of turnover in retail trade was 52.7 per cent in 2019.

3) According to the Structural business and financial statement statistics, the share of retail sale in department stores (4719) of turnover in retail trade was 6.5 per cent in 2019.

4) According to the Structural business and financial statement statistics, the share of retail sale in specialised stores (474-477) of turnover in retail trade was 35.9 per cent in 2019

Revisions in these statistics

The data of the statistics have become revised according to the table below. For more information about data revisions, see Section 3 of the quality description (only in Finnish).

Revision of annual changes in working day adjusted turnover in industries of trade¹⁾

Industry / Reference period		Year-on-year change, %		Revision, percentage point
		1st release	Latest release (2021-08-12)	
G Total trade	01/2021	1.9	1.9	0.0
	02/2021	3.9	4.3	0.4
	03/2021	6.8	6.3	-0.5
	04/2021	16.9	15.7	-1.2
	05/2021	13.5	12.8	-0.7
45 Motor vehicle trade	01/2021	5.8	6.0	0.2
	02/2021	4.2	5.9	1.7
	03/2021	20.3	20.5	0.2
	04/2021	46.2	44.2	-2.0
	05/2021	37.8	36.6	-1.2
46 Wholesale trade	01/2021	-1.2	-0.8	0.4
	02/2021	2.5	2.9	0.4
	03/2021	3.6	2.7	-0.9
	04/2021	13.3	12.0	-1.3
	05/2021	12.5	12.5	0.0
47 Retail trade	01/2021	5.3	4.7	-0.6
	02/2021	4.8	4.3	-0.5
	03/2021	6.3	6.6	0.3
	04/2021	11.7	11.1	-0.6
	05/2021	6.3	5.2	-1.1
Daily consumer goods trade (4711, 472)	01/2021	7.7	6.9	-0.8
	02/2021	7.6	6.7	-0.9
	03/2021	3.8	3.3	-0.5
	04/2021	4.7	3.4	-1.3
	05/2021	1.7	0.8	-0.9
Department store trade (4719)	01/2021	7.3	7.4	0.1
	02/2021	2.3	1.9	-0.4
	03/2021	16.9	17.3	0.4
	04/2021	17.9	17.2	-0.7
	05/2021	3.3	3.4	0.1
Specialised store trade (474-477)	01/2021	1.3	1.0	-0.3
	02/2021	-3.1	-3.9	-0.8
	03/2021	5.6	6.5	0.9
	04/2021	18.2	19.5	1.3
	05/2021	10.5	9.5	-1.0

1) The 1st release refers to the time when data for the reference period were released for the first time. The revision describes the difference of annual change percentages between the first and latest release.

Revision of long-term annual changes in working day adjusted turnover in industries of trade

Industry / Year		Average ¹⁾	Average for absolute values ²⁾
G Total trade	2017	0.0	0.6
	2018	0.2	0.6
	2019	-0.1	0.4
45 Motor vehicle trade	2017	0.1	0.6
	2018	0.6	1.1
	2019	0.4	0.5
46 Wholesale trade	2017	0.0	0.8
	2018	0.3	0.8
	2019	-0.3	0.8
47 Retail trade	2017	-0.2	0.6
	2018	-0.1	0.5
	2019	0.0	0.4
Daily consumer goods trade (4711, 472)	2017	-0.2	0.5
	2018	0.3	0.4
	2019	-0.1	0.3
Department store trade (4719)	2017	0.1	0.9
	2018	-0.3	0.3
	2019	0.0	0.2

1) The average have been calculated upon completion of the data for the first and last release months in the statistical reference year, when the official structural business and financial statement statistics are also published.

2) The average have been calculated from the absolute values of differences between the first and last release months in the statistical reference year, when the official structural business and financial statement statistics are also published.

Inquiries

Lauri Pullinen 029 551 3043

Mauri Niiniaho 029 551 3409

Head of Department in
charge:

Katri Kaaja

palvelut.suhdanne@stat.fi

www.stat.fi

Source: Turnover of trade, Statistics Finland