

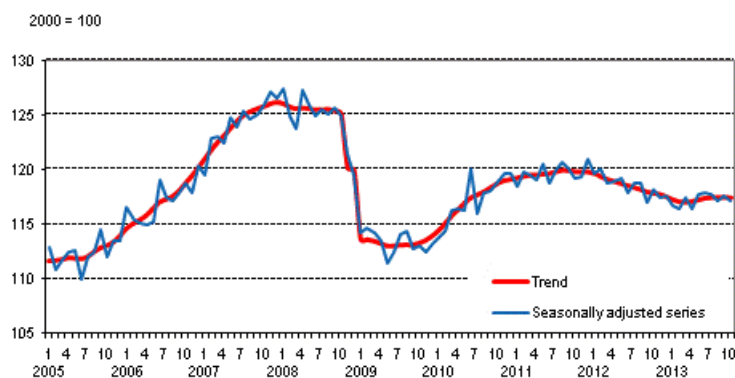
# Trend Indicator of Output

2013, October

## Output of the national economy decreased in October 2013

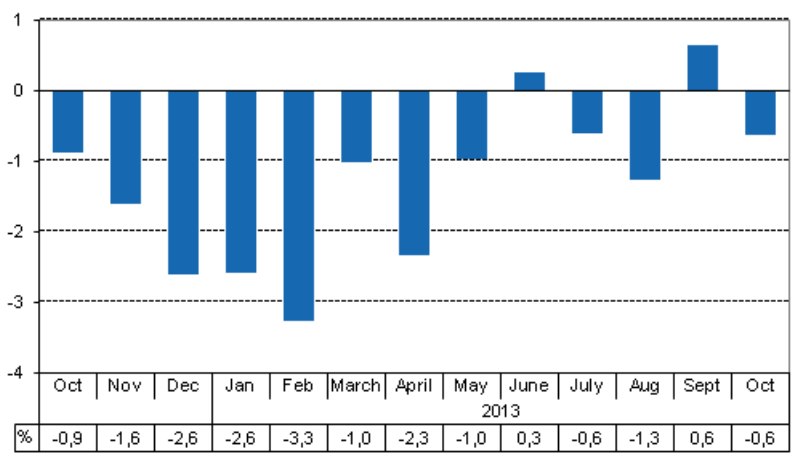
Seasonally adjusted output decreased by 0.4 per cent in October from the month before. Adjusted for working days, output fell by 0.6 per cent from the level of the previous year. According to revised data, working-day adjusted output went up in September by 0.6 per cent (previously -0.3 per cent) from September 2012. The revision is caused by the benchmarking of the data to quarterly accounts.

### Volume of total output 2005 – 2013, trend and seasonally adjusted series



The series of the Trend Indicator of Output are seasonally adjusted with the Tramo/Seats method. The latest observations of the series adjusted for seasonal and random variation (seasonally adjusted and trend series) become revised with new observations in seasonal adjustment methods. Revisions especially at turning points of economic trends may be significant, which should be taken into consideration when using seasonally adjusted and trend data.

**Working day adjusted change of total output from previous year's corresponding month, %**



Primary production, secondary production and services decreased by almost one per cent from the year before.

Secondary production includes manufacturing and construction. Services comprise trade, hotel and restaurant activities, transport and business activities, as well as real estate, renting and research services, financial intermediation and insurance, and public services. Primary production refers to agriculture, forestry and fishing.

# Contents

Revisions in these statistics.....4

## Revisions in these statistics

### Revision of annual volume change, %

		2013M02	2013M03	2013M04	2013M05	2013M06	2013M07	2013M08	2013M09
Seasonally adjusted month-on-month change, %	1. release	-0,7	1,0	-2,4	1,2	-0,1	0,3	-0,1	-0,2
	Previous release	-0,3	0,9	-1,0	1,3	0,3	0,2	-0,4	-0,2
	Latest release	-0,3	1,0	-1,0	1,2	0,1	-0,1	-0,6	0,5
	Revision, %-points (latest minus first)	0,4	0,0	1,4	0,0	0,2	-0,4	-0,5	0,7
Working day adjusted year-on-year change, %	1. release	-2,9	-0,4	-4,2	-0,8	-0,0	-0,2	-0,5	-0,3
	Previous release	-3,2	-1,1	-2,4	-0,8	0,5	-0,2	-0,9	-0,3
	Latest release	-3,3	-1,0	-2,3	-1,0	0,2	-0,6	-1,3	0,6
	Revision, %-points (latest minus first)	-0,4	-0,6	1,9	-0,2	0,2	-0,4	-0,8	0,9

### Average revision starting from 2010QM01, %-points

	Average revision (absolute values)	Average revision
Seasonally adjusted month-on-month change	0,6	-0,0
Working day adjusted year-on-year change	1,0	-0,7

---

Suomen virallinen tilasto  
Finlands officiella statistik  
Official Statistics of Finland

National Accounts 2014

### Inquiries

Samu Hakala 09 1734 3756

Veli-Pekka Karvinen 09 1734 2667

Director in charge:

Leena Storgårds

[kansantalous.suhdanteet@tilastokeskus.fi](mailto:kansantalous.suhdanteet@tilastokeskus.fi)

[www.stat.fi](http://www.stat.fi)

Source: Trend Indicator of Output 2013, October, Statistics Finland