

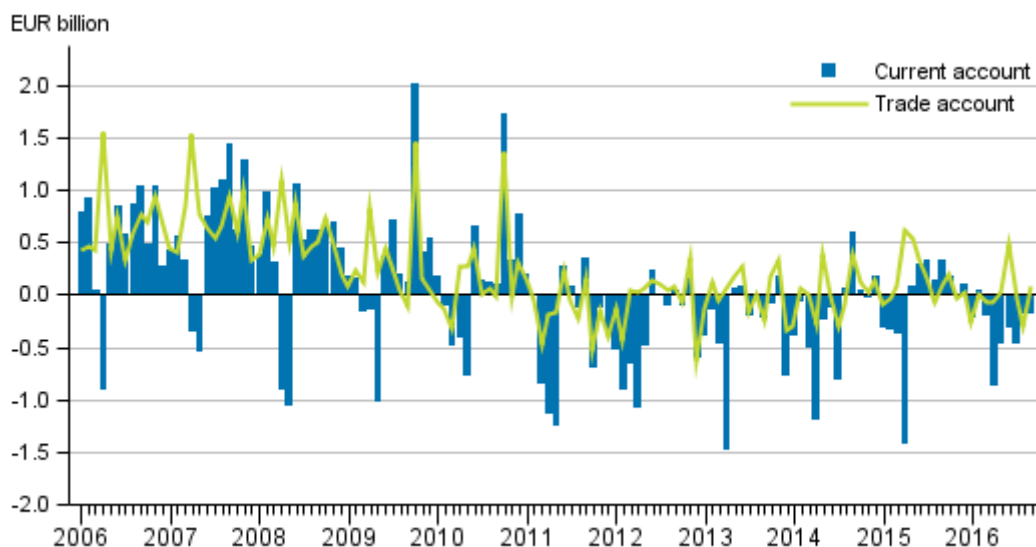
Balance of payments and international investment position

2016, September

Current account in deficit in September, international investment position positive

The current account was EUR 0.2 billion in deficit in September. The value of exports of goods and services decreased by one per cent from one year ago. In January to September, the value of exports of goods and services has decreased by four per cent year-on-year. The international investment position was positive. The data appear from Statistics Finland's statistics on balance of payments and international investment position.

Current account and trade account



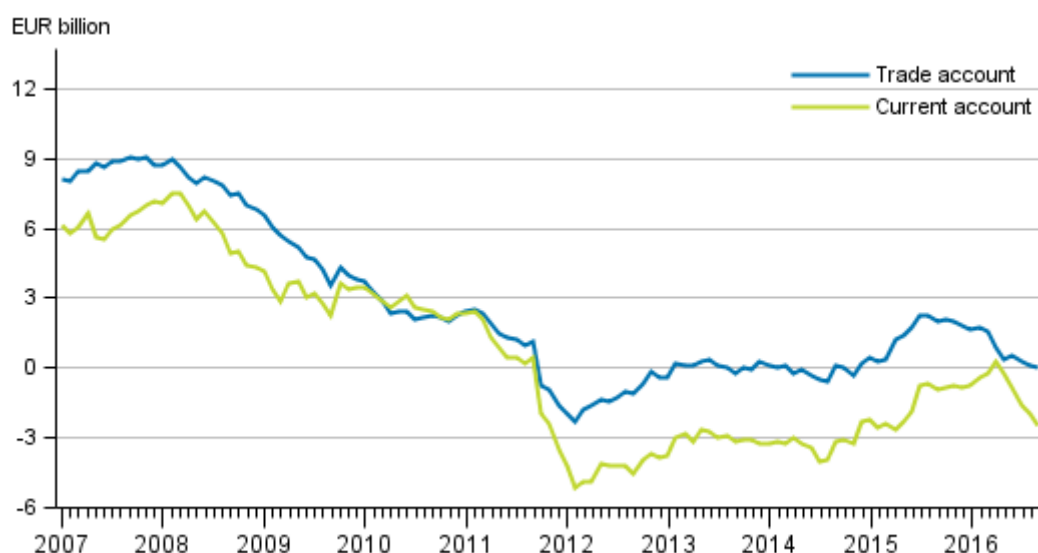
Current account

The current account was EUR 0.2 billion in deficit in September. The 12-month moving total of the current account was EUR 2.4 billion in deficit.

Of the sub-items of the current account, the trade account in balance of payment terms was EUR 0.1 billion in surplus. The value of goods exports in balance of payment terms was EUR 4.6 billion. The service account showed a deficit of EUR 0.1 billion.

The primary income account was EUR 0.1 billion in deficit. The primary income account includes investment income like interests and dividends. The secondary income account was EUR 0.1 billion in deficit.

Current account and trade account, 12 –month moving total

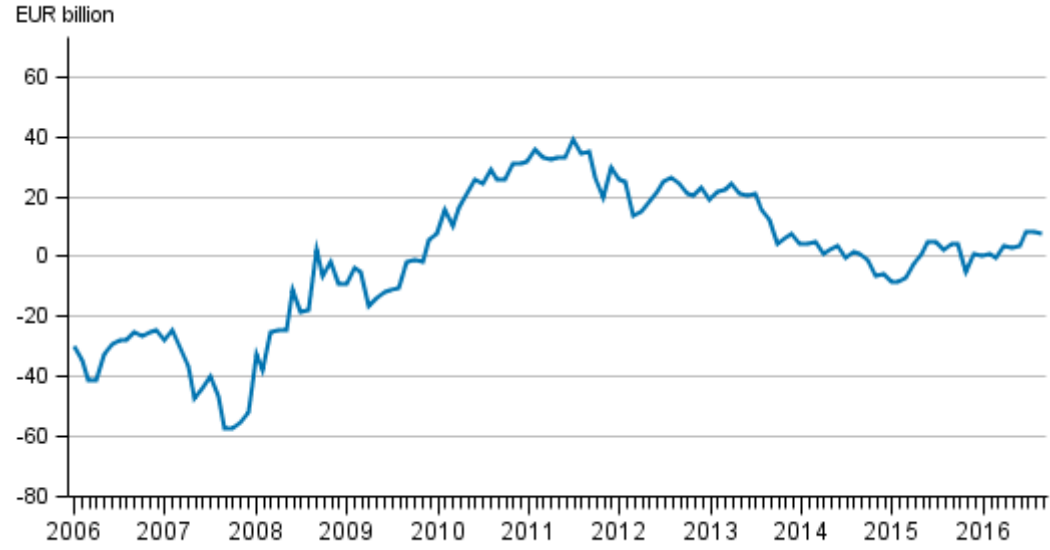


Financial account and international investment position

In September, net capital outflow from Finland amounted to EUR 0.3 billion. Of the sub-items of the financial account, net capital inflow was mostly in the form of other investments, EUR 3.7 billion. Net capital outflow from Finland was mainly in the form of portfolio investments, EUR 3.4 billion.

Finland's net international investment position stood at EUR 7.8 billion at the end of September, as foreign assets amounted to EUR 739.4 billion and foreign liabilities to EUR 731.7 billion.

International investment position



Contents

Tables

Appendix tables

Appendix table 1. Balance of payments, monthly 2016, EUR million.....	5
Appendix table 2. Current account, monthly 2016, EUR million.....	5
Appendix table 3. External assets and liabilities, by investment type, monthly 2016, EUR million.....	6
Appendix table 4. Balance of payments 2016, EUR million.....	6

Appendix tables

Appendix table 1. Balance of payments, monthly 2016, EUR million

	Year/month								
	2016/01	2016/02	2016/03	2016/04	2016/05	2016/06	2016/07	2016/08	2016/09
1. Current account	-209	50	-187	-851	-447	-304	-442	-166	-167
1.1 Goods	-268	5	-63	-71	27	489	-28	-302	94
1.2 Services	-12	-29	-39	-255	-250	-258	-56	-71	-86
1.3 Primary income	287	291	131	-377	-77	-388	-225	301	-79
1.4 Secondary income	-216	-216	-216	-147	-147	-147	-133	-95	-95
2. Capital account	-11	-11	-11	15	15	15	17	13	13
3. Financial account	-1 046	-842	-3 193	66	-312	3 799	-2 422	-2 261	254
3.1 Direct investment	9 919	3 463	-965	2 635	2 086	1 806	522	-957	1 354
3.2 Portfolio investment	-12 893	-579	6 120	4 228	-1 489	-1 645	-2 499	3 198	3 407
3.3 Other investment	3 547	-4 309	-8 445	-6 862	-2 435	2 726	251	-5 111	-3 736
3.4 Financial derivatives	-1 353	219	164	67	1 202	785	-520	510	-912
3.5 Reserve assets	-267	363	-67	-2	325	127	-175	99	140
4. Errors and omissions	-826	-882	-2 995	902	120	4 088	-1 998	-2 108	408

1) The statistics become final more than two years after the end of the reference year.

2) Figures in the table are net flows during period.

3) Financial account = Assets less liabilities

Appendix table 2. Current account, monthly 2016, EUR million

		Year/month								
		2016/01	2016/02	2016/03	2016/04	2016/05	2016/06	2016/07	2016/08	2016/09
Credit	1. Current account	6 675	7 193	7 867	7 613	7 755	8 146	7 281	7 157	7 697
	1.1 Goods	3 601	4 133	4 468	4 406	4 429	5 021	4 073	3 973	4 586
	1.2 Services	1 872	1 872	1 868	1 740	1 740	1 740	1 841	1 842	1 834
	1.3 Primary income	1 104	1 090	1 433	1 370	1 489	1 288	1 271	1 256	1 190
	1.4 Secondary income	99	99	99	96	96	96	96	86	86
Debit	1. Current account	6 885	7 143	8 054	8 463	8 201	8 449	7 723	7 323	7 864
	1.1 Goods	3 869	4 128	4 530	4 477	4 402	4 532	4 101	4 274	4 492
	1.2 Services	1 884	1 901	1 907	1 996	1 990	1 998	1 896	1 913	1 921
	1.3 Primary income	816	799	1 302	1 747	1 565	1 676	1 496	955	1 269
	1.4 Secondary income	315	315	315	244	244	244	229	182	182

1) The statistics become final more than two years after the end of the reference year.

Appendix table 3. External assets and liabilities, by investment type, monthly 2016, EUR million

		Year/month								
		2016/01	2016/02	2016/03	2016/04	2016/05	2016/06	2016/07	2016/08	2016/09
Assets	Total	40 134	17 674	-31 425	8 248	-178	-44 253	9 086	-11 620	-17 234
	1. Direct investment	9 599	2 570	2 999	-2 674	87	-1 533	897	49	-107
	2. Portfolio investment	1 687	608	5 365	2 179	-1 787	-3 462	-1 058	3 284	4 274
	3. Other investment	36 974	20 869	-30 448	14 860	8 254	-32 088	14 759	-7 220	-13 437
	4. Financial derivatives	-7 858	-6 735	-9 275	-6 114	-7 056	-7 296	-5 336	-7 833	-8 105
	5. Reserve assets	-267	363	-67	-2	325	127	-175	99	140
Liabilities	Total	41 181	18 516	-28 232	8 182	134	-48 052	11 509	-9 359	-17 488
	1. Direct investment	-321	-893	3 964	-5 309	-2 000	-3 339	376	1 007	-1 461
	2. Portfolio investment	14 580	1 186	-755	-2 049	-298	-1 817	1 441	86	868
	3. Other investment	33 427	25 178	-22 002	21 722	10 689	-34 815	14 508	-2 109	-9 701
	4. Financial derivatives	-6 505	-6 954	-9 439	-6 181	-8 258	-8 081	-4 816	-8 342	-7 193
	5. Reserve assets

1) The statistics become final more than two years after the end of the reference year.

Appendix table 4. Balance of payments 2016, EUR million

	Year 2015	12 month moving sum	2016/08	2016/09
1. Current account	-870	-2 430	-166	-167
1.1 Goods	1 865	62	-302	94
1.2 Services	-1 608	-1 545	-71	-86
1.3 Primary income	1 194	892	301	-79
1.4 Secondary income	-2 321	-1 838	-95	-95
2. Capital account	160	94	13	13
3. Financial account	-2 024	-10 870	-2 261	254
3.1 Direct investment	-15 764	16 223	-957	1 354
3.2 Portfolio investment	-2 805	-7 879	3 198	3 407
3.3 Other investment	21 810	-20 217	-5 111	-3 736
3.4 Financial derivatives	-5 047	684	510	-912
3.5 Reserve assets	-219	318	99	140
4. Errors and omissions	-1 314	-8 535	-2 108	408

1) The statistics become final more than two years after the end of the reference year

2) Figures in the table are net flows during period

3) Financial account = Assets less liabilities

Inquiries

Saana Ranta-Ruona 029 551 3375
Tapio Kuusisto 029 551 3318
Director in charge:
Ville Vertanen

www.stat.fi

Source: Balance of payments and international investment position, Statistics Finland