

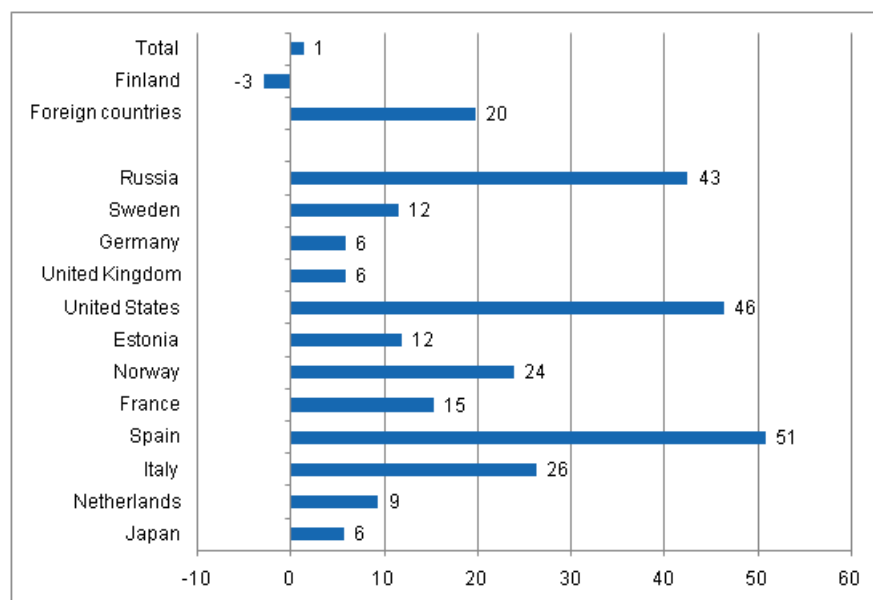
Accommodation statistics

2011, April

Nights spent by foreign tourists in Finland up by 20 per cent in April

The number of recorded nights spent by foreign tourists at Finnish accommodation establishments in April 2011 was nearly 304,000, which was 20 per cent more than in April 2010. The number of nights spent by resident tourists fell by around three per cent from one year back and remained at 1.1 million in April. The total number of nights spent increased by one per cent from April 2010 and rose to nearly 1.4 million. These figures are preliminary data from Statistics Finland's statistics on accommodation establishments and they have been collected from accommodation establishments with at least 10 rooms, cottages, or caravan pitches with electricity connection, and youth hostels.

Change in overnight stays in April 2011/2010, %

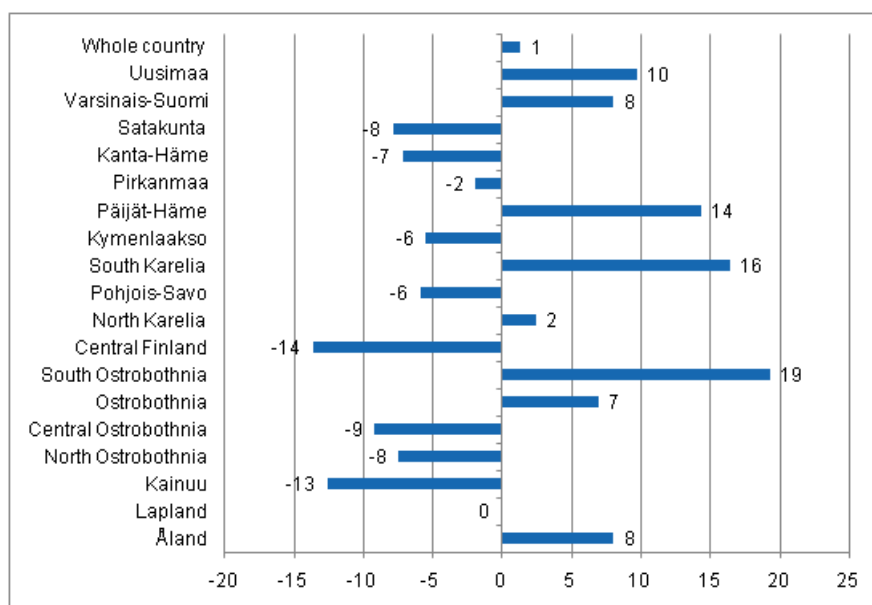


Russians were by far the biggest group of foreigners in April 2011 with 67,000 nights spent. Overnight stays of Russian tourists went up by 43 per cent from the year before. Swedes came next with nearly 34,000 nights spent, followed by Germans with 26,000 nights spent and by British tourists with 22,000

nights spent. Overnight stays of Swedish tourists increased by 12 per cent and those of German and British tourists both by six per cent. In April, nearly 13,000 nights were recorded at Finnish accommodation establishments for U.S., Estonian and Norwegian tourists. Overnight stays of tourists from the United States increased by 46 per cent, those of Estonians by 12 per cent and of Norwegians by 24 per cent compared with April 2010. The number of nights spent by Spanish tourists also grew clearly from last year's April. They spent close on 9,000 nights in Finland, which was 51 per cent more than twelve months previously. Good 7,000 overnight stays were recorded for Italian visitors, which was 26 per cent more than one year before.

The total number of overnight stays grew most in the region of South Ostrobothnia, by 19 per cent, in South Karelia by 16 per cent and in Päijät-Häme by 14 per cent. Overnight stays decreased most in Central Finland, 14 per cent down, and in Kainuu, 13 per cent down.

Change in overnight stays in April by region 2011 / 2010, %



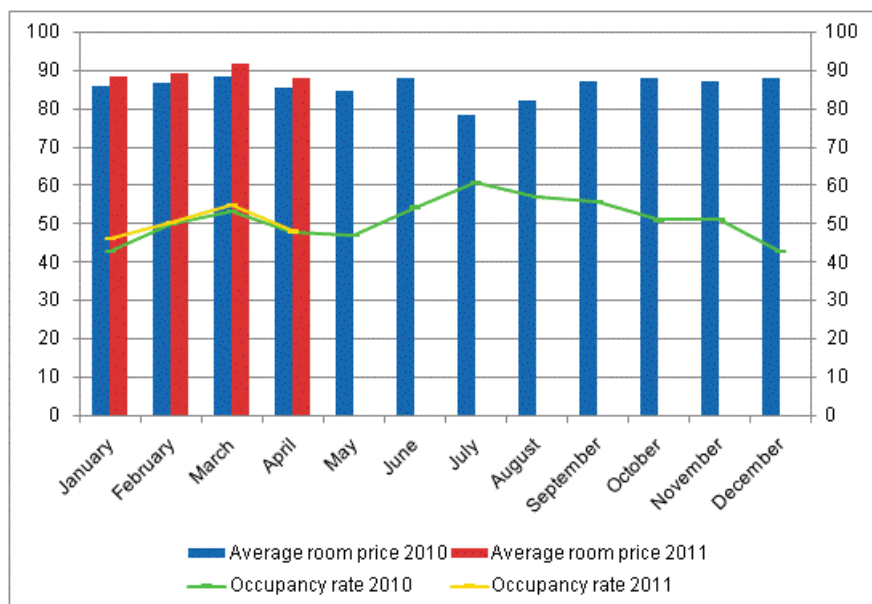
Overnight stays in hotels increased by 2.4 per cent in April 2011

The total number of nights spent in hotels in April was nearly 1.2 million, which was 2.4 per cent more than twelve months previously. Foreign visitors spent 276,000 nights in hotels, which was 22.3 per cent more than twelve months before. The number of recorded nights spent by resident tourists in hotels was good 912,000, which was 2.4 per cent down from April 2010.

The occupancy rate of hotel rooms was 48.1 per cent in April. One year earlier it was 47.7 per cent. Of the regions, the occupancy rates of hotel rooms were highest in the region of Uusimaa, 57.8 per cent and in South Karelia, 55.1 per cent. The occupancy rate of hotel rooms in Helsinki was 61.2 per cent.

In April the realised average price of a hotel room was EUR 87.92 per day, while one year previously it was EUR 85.02.

Hotel room occupancy rate and the monthly average price

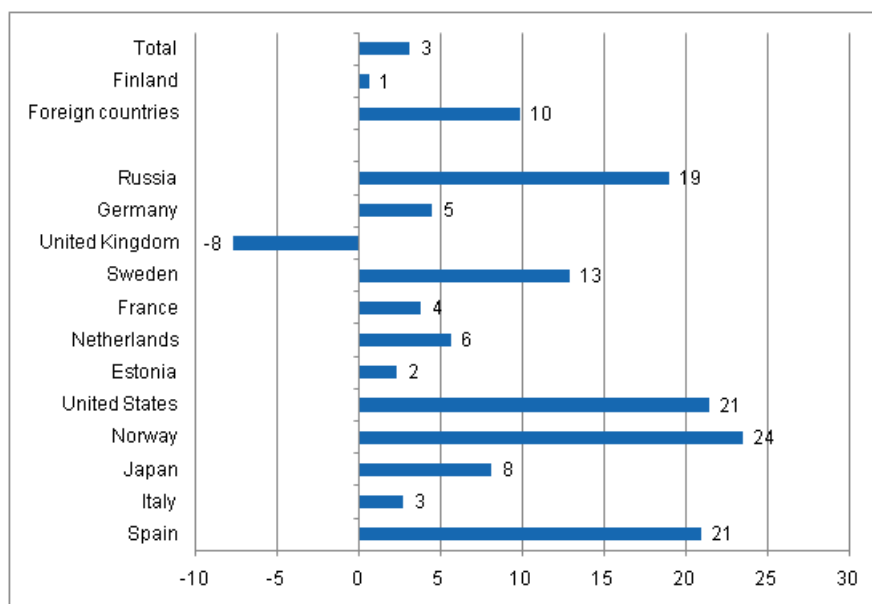


A total of 5.7 million overnight stays in the January to April period

During the January to April period, the number of nights spent by tourists at accommodation establishments totalled 5.7 million, which was three per cent more than in the respective period of the previous year. Overnight stays by resident tourists increased by nearly one per cent and their recorded number at accommodation establishments was 4.1 million. The number of recorded nights spent by foreign tourists at Finnish accommodation establishments was 1.6 million, which was ten per cent more than in January to April 2010.

In the January to April period, nearly half a million nights spent at Finnish accommodation establishments were recorded for Russians and as usual, they were the biggest group of foreign visitors in Finland. Their number of overnight stays went up by 19 per cent when compared with the respective time period of the year before. Germans came next with good 135,000 nights spent, which was nearly five per cent up on the January to April 2010 period. Britons were third with 124,000 nights spent. Their overnight stays decreased by nearly eight per cent from last year.

Change in overnight stays in January-April 2011/2010, %



Contents

Tables

Appendix tables

Appendix table 1. Capacity and its utilization, April 2011.....	5
Appendix table 2. Nights spend in all establishments, April 2011.....	6
Appendix table 3. Hotel capacity and capacity utilization, April 2011.....	7
Appendix table 4. Nights spend in hotels, April 2011.....	8
Appendix table 5. Visitor arrivals and nights spend by country of residence, April 2011.....	9
Appendix table 6. Nights spend in all establishments, 2011.....	9

Appendix tables

Appendix table 1. Capacity and its utilization, April 2011

Region / municipality	Number of establishments	Number of bedrooms	Occupancy rate of bedrooms %	Change of the occupancy rate compared to previous year, %-units	Average price of nights spend, in euros (incl. VAT 9 %)
Whole country	991	55 867	45,8	0,2	49,91
Mainland Finland	956	54 840	46,2	0,2	49,88
Uusimaa	133	14 073	57,1	2,4	61,24
Helsinki	59	8 477	60,6	4,9	62,46
Varsinais-Suomi	58	3 390	48,5	2,9	47,01
Turku	21	1 980	53,0	1,1	47,76
Satakunta	35	1 413	35,0	-2,0	55,42
Pori	9	675	38,4	-4,5	52,72
Kanta-Häme	27	1 350	35,4	-2,5	52,48
Hämeenlinna	11	756	38,7	0,4	60,08
Pirkanmaa	64	3 873	47,0	-2,2	48,82
Tampere	23	2 389	55,3	-2,6	52,92
Päijät-Häme	29	1 934	37,7	1,3	44,91
Lahti	10	761	41,7	5,7	50,47
Kymenlaakso	21	1 120	35,5	3,6	49,55
Kouvola	9	559	35,5	0,7	43,33
South Karelia	26	1 314	51,0	5,3	50,04
Lappeenranta	9	559	56,5	7,3	51,91
Etelä-Savo	52	1 746	30,8	-1,7	43,60
Mikkeli	7	494	47,0	3,1	46,75
Pohjois-Savo	42	2 410	44,7	-1,7	46,49
Kuopio	13	1 016	52,8	-4,1	52,26
North Karelia	40	1 535	32,4	0,7	45,15
Joensuu	11	759	41,4	1,5	52,20
Central Finland	48	2 841	40,1	-1,8	39,98
Jyväskylä	12	1 306	52,1	2,9	52,94
South Ostrobothnia	38	1 635	40,2	0,8	37,12
Seinäjoki	9	532	53,0	7,3	53,63
Ostrobothnia	28	1 370	36,9	0,7	48,10
Vaasa	10	877	42,7	2,3	54,65
Central Ostrobothnia	15	565	38,0	-6,8	43,98
Kokkola	7	390	41,1	-7,6	54,10
North Ostrobothnia	85	4 070	46,5	-2,8	43,23
Oulu	11	1 450	58,4	-3,5	51,32
Kainuu	40	1 988	44,6	-1,4	33,79
Kajaani	9	500	30,1	0,5	47,84
Lapland	175	8 213	44,6	-0,8	45,85
Rovaniemi	17	1 386	33,0	0,5	41,19
Åland	35	1 027	25,0	0,3	.
Maarianhamina	10	584	33,1	-3,9	.

Appendix table 2. Nights spend in all establishments, April 2011

Region / municipality	Nights spend, total	Change of nights spend, total, %	Nights spend, residents	Change of nights spend, residents, %	Nights spend, non-residents	Change of nights spend, non-residents, %
Whole country	1 399 936	1,3	1 096 105	-2,9	303 831	19,8
Mainland Finland	1 383 630	1,2	1 089 722	-3,0	293 908	20,3
Uusimaa	363 740	9,7	198 701	2,2	165 039	20,2
Helsinki	236 787	15,8	109 278	9,1	127 509	22,2
Varsinais-Suomi	85 126	8,0	71 094	6,6	14 032	15,9
Turku	53 354	4,0	43 485	2,0	9 869	13,9
Satakunta	21 205	-7,9	17 144	-11,8	4 061	13,2
Pori	11 037	-17,0	9 273	-18,6	1 764	-7,6
Kanta-Häme	25 486	-7,2	22 928	-11,8	2 558	76,8
Hämeenlinna	14 902	-6,0	12 858	-13,6	2 044	109,4
Pirkanmaa	98 653	-1,9	84 833	-2,3	13 820	0,8
Tampere	65 455	-4,4	54 517	-4,5	10 938	-3,7
Päijät-Häme	40 249	14,3	36 382	13,7	3 867	20,1
Lahti	14 763	13,6	11 462	12,5	3 301	17,9
Kymenlaakso	18 669	-5,5	14 288	-15,1	4 381	49,8
Kouvola	9 644	-7,1	8 526	-9,3	1 118	14,1
South Karelia	35 033	16,4	17 665	-8,9	17 368	62,2
Lappeenranta	14 852	16,8	8 911	-1,0	5 941	59,8
Etelä-Savo	27 737	6,7	24 087	1,2	3 650	67,0
Mikkeli	11 221	7,9	9 655	3,0	1 566	52,9
Pohjois-Savo	57 714	-5,9	53 792	-6,2	3 922	-0,7
Kuopio	25 960	-7,9	24 177	-7,9	1 783	-7,7
North Karelia	26 174	2,4	23 046	-2,8	3 128	67,5
Joensuu	14 117	9,3	12 067	4,1	2 050	55,2
Central Finland	67 239	-13,6	62 194	-14,0	5 045	-8,5
Jyväskylä	31 380	2,3	27 420	1,8	3 960	5,3
South Ostrobothnia	42 546	19,3	41 375	19,1	1 171	24,8
Seinäjoki	13 910	19,7	13 044	19,4	866	26,1
Ostrobothnia	25 718	6,9	21 704	4,2	4 014	23,8
Vaasa	16 938	1,7	13 708	-1,5	3 230	17,8
Central Ostrobothnia	11 028	-9,2	10 314	-6,7	714	-34,4
Kokkola	6 772	-13,3	6 200	-8,1	572	-46,1
North Ostrobothnia	118 658	-7,5	106 908	-9,1	11 750	10,8
Oulu	40 636	-8,3	35 623	-10,9	5 013	16,2
Kainuu	77 640	-12,6	75 536	-12,9	2 104	-1,3
Kajaani	6 853	1,6	6 460	0,7	393	18,0
Lapland	241 015	-0,1	207 731	-2,7	33 284	19,9
Rovaniemi	23 945	7,3	16 630	4,8	7 315	13,7
Åland	16 306	8,0	6 383	10,2	9 923	6,7
Maarianhamina	10 493	12,4	5 204	14,9	5 289	10,1

Appendix table 3. Hotel capacity and capacity utilization, April 2011

Region / municipality	Number of establishments	Number of bedrooms	Occupancy rate of bedrooms %	Change of the occupancy rate compared to previous year, %-units	Room price, euros (Vat inc. 9 %)	¹⁾ RevPAR, euros (Vat inc. 9 %)
Whole country	622	49 016	48,1	0,4	87,92	42,29
Mainland Finland	611	48 359	48,3	0,4	87,88	42,45
Uusimaa	111	13 700	57,8	3,1	93,05	53,80
Helsinki	52	8 301	61,2	5,6	95,32	58,32
Varsinais-Suomi	35	2 944	50,7	2,8	80,47	40,81
Turku	18	1 912	53,6	1,2	82,76	44,32
Satakunta	23	1 140	40,4	-1,3	81,63	32,97
Pori	7	583	41,3	-4,6	80,33	33,17
Kanta-Häme	17	1 200	37,1	-1,8	89,30	33,12
Hämeenlinna	8	714	40,0	1,0	98,86	39,58
Pirkanmaa	40	3 288	49,1	-2,9	86,04	42,25
Tampere	20	2 237	54,0	-3,1	87,50	47,26
Päijät-Häme	17	1 786	39,5	1,6	76,14	30,04
Lahti	8	732	42,2	6,2	77,83	32,87
Kymenlaakso	15	946	38,8	5,6	78,70	30,56
Kouvola	6	435	41,9	5,2	73,37	30,75
South Karelia	17	1 167	55,1	4,9	89,29	49,23
Lappeenranta	6	501	62,0	7,9	82,76	51,27
Etelä-Savo	27	1 413	34,3	-3,6	73,68	25,28
Mikkeli	5	455	48,3	1,7	76,68	37,00
Pohjois-Savo	28	2 211	46,4	-1,6	83,28	38,61
Kuopio	8	938	54,3	-3,4	84,86	46,10
North Karelia	23	1 316	35,7	0,7	79,08	28,24
Joensuu	10	749	41,9	1,5	78,30	32,78
Central Finland	30	2 543	42,6	-2,2	80,92	34,50
Jyväskylä	10	1 230	54,4	2,6	84,03	45,74
South Ostrobothnia	22	1 337	46,4	1,6	73,26	33,97
Seinäjoki	8	532	53,0	7,3	75,24	39,90
Ostrobothnia	23	1 306	38,5	1,7	80,46	30,95
Vaasa	10	877	42,7	2,3	82,37	35,18
Central Ostrobothnia	10	506	37,6	-9,6	71,52	26,91
Kokkola	5	362	42,1	-10,8	77,18	32,46
North Ostrobothnia	49	3 326	48,1	-2,7	85,75	41,24
Oulu	10	1 422	58,5	-3,4	80,63	47,15
Kainuu	21	1 625	48,3	-1,0	74,61	36,07
Kajaani	7	453	31,9	0,2	75,22	23,99
Lapland	103	6 605	44,9	-1,1	98,80	44,32
Rovaniemi	12	1 249	34,0	0,5	69,82	23,72
Åland	11	657	33,2	1,1	.	.
Maarianhamina	7	517	36,7	-2,4	.	.

1) RevPar = Average revenue per available room, equivalent to the accommodation revenue of an establishment divided by the available room capacity.

Appendix table 4. Nights spend in hotels, April 2011

Region / municipality	Nights spend, total	Change of nights spend, total, %	Nights spend, residents	Change of nights spend, residents, %	Nights spend, non-residents	Change of nights spend, non-residents, %
Whole country	1 188 464	2,4	912 398	-2,4	276 066	22,3
Mainland Finland	1 176 666	2,3	907 002	-2,5	269 664	22,7
Uusimaa	349 668	11,5	190 961	3,6	158 707	22,9
Helsinki	226 537	18,4	104 720	10,6	121 817	26,1
Varsinais-Suomi	75 060	5,2	62 842	3,6	12 218	14,4
Turku	51 358	3,6	42 783	2,2	8 575	11,7
Satakunta	18 068	-6,9	14 039	-11,6	4 029	14,2
Pori	9 097	-16,3	7 342	-18,3	1 755	-6,9
Kanta-Häme	22 143	-4,1	20 037	-8,2	2 106	68,6
Hämeenlinna	13 935	-3,2	12 277	-8,5	1 658	69,9
Pirkanmaa	80 635	-6,3	68 330	-7,7	12 305	2,6
Tampere	59 188	-5,6	49 371	-5,6	9 817	-5,5
Päijät-Häme	38 034	16,4	34 658	15,7	3 376	24,2
Lahti	14 106	13,9	11 118	12,7	2 988	18,8
Kymenlaakso	15 104	9,1	11 019	-0,2	4 085	45,6
Kouvola	7 623	9,3	6 549	8,8	1 074	12,7
South Karelia	33 796	15,3	16 657	-11,1	17 139	61,8
Lappeenranta	14 647	16,5	8 796	-1,4	5 851	60,5
Etelä-Savo	23 586	6,9	20 879	3,1	2 707	49,5
Mikkeli	10 550	7,4	9 324	5,6	1 226	22,5
Pohjois-Savo	52 969	-4,9	49 606	-6,1	3 363	16,0
Kuopio	23 978	-7,4	22 380	-8,2	1 598	5,0
North Karelia	23 379	-1,4	20 548	-6,4	2 831	59,7
Joensuu	14 077	9,3	12 033	4,1	2 044	54,7
Central Finland	63 538	-13,5	58 587	-14,2	4 951	-3,3
Jyväskylä	30 985	2,3	27 025	1,8	3 960	5,3
South Ostrobothnia	35 843	21,5	34 736	21,2	1 107	32,4
Seinäjoki	11 787	20,6	10 921	19,1	866	42,0
Ostrobothnia	22 260	2,4	18 262	-1,4	3 998	23,9
Vaasa	16 938	1,7	13 708	-1,5	3 230	17,8
Central Ostrobothnia	8 334	-18,8	7 682	-16,4	652	-39,3
Kokkola	6 177	-18,9	5 633	-14,3	544	-48,0
North Ostrobothnia	86 274	-5,3	76 696	-7,7	9 578	19,5
Oulu	37 581	-8,6	33 432	-10,2	4 149	6,4
Kainuu	54 773	-8,2	52 969	-8,4	1 804	-0,3
Kajaani	6 577	0,0	6 184	-0,9	393	18,0
Lapland	173 202	-0,4	148 494	-3,3	24 708	20,6
Rovaniemi	21 178	5,4	14 707	1,9	6 471	14,1
Åland	11 798	12,2	5 396	15,8	6 402	9,3
Maarianhamina	10 196	14,8	5 166	16,9	5 030	12,8

Appendix table 5. Visitor arrivals and nights spend by country of residence, April 2011

Country of residence	Visitor arrivals in all accommodation establishments	Nights spend in all accommodation establishments	Change of nights spend in all accommodation establishments, %	Nights spend in hotels	Change of nights spend in hotels, %
Total	718 399	1 399 936	1,3	1 188 464	2,4
Finland	571 289	1 096 105	-2,9	912 398	-2,4
Foreign countries	147 110	303 831	19,8	276 066	22,3
Sweden	19 829	33 544	11,5	29 937	16,6
Germany	10 788	25 775	5,8	24 380	7,6
Russia	40 602	66 574	42,5	61 512	45,9
United Kingdom	8 989	22 296	5,8	18 835	4,5
United States	5 361	12 891	46,3	12 610	51,2
Norway	5 881	12 715	23,9	10 053	22,8
Netherlands	3 451	7 169	9,3	6 710	10,9
Italy	2 931	7 466	26,2	7 103	30,4
France	4 500	10 355	15,3	9 070	15,4
Japan	2 560	5 022	5,6	4 862	6,3
Estonia	4 869	12 750	11,8	9 232	14,3
Spain	3 589	8 606	50,9	7 641	46,5

Appendix table 6. Nights spend in all establishments, 2011

Month	Nights spend, total	Change of nights spend, total, %	Nights spend, residents	Change of nights spend, residents, %	Nights spend, non-residents	Change of nights spend, non-residents, %
Total	5 722 072	3,1	4 114 106	0,6	1 607 966	9,8
January	1 310 651	7,5	774 553	6,5	536 098	9,1
February	1 339 326	1,1	989 589	1,0	349 737	1,5
March	1 672 159	2,8	1 253 859	0,2	418 300	11,7
April	1 399 936	1,3	1 096 105	-2,9	303 831	19,8

Suomen virallinen tilasto
Finlands officiella statistik
Official Statistics of Finland

Transport and Tourism 2011

Inquiries

Merja Rönkä (09) 1734 3209

Juha-Pekka Konttinen (09) 1734 3260

Director in charge:

Hannele Orjala

liikenne.matkailu@stat.fi

www.stat.fi

Source: Accommodation Statistics 2011. Statistics Finland