

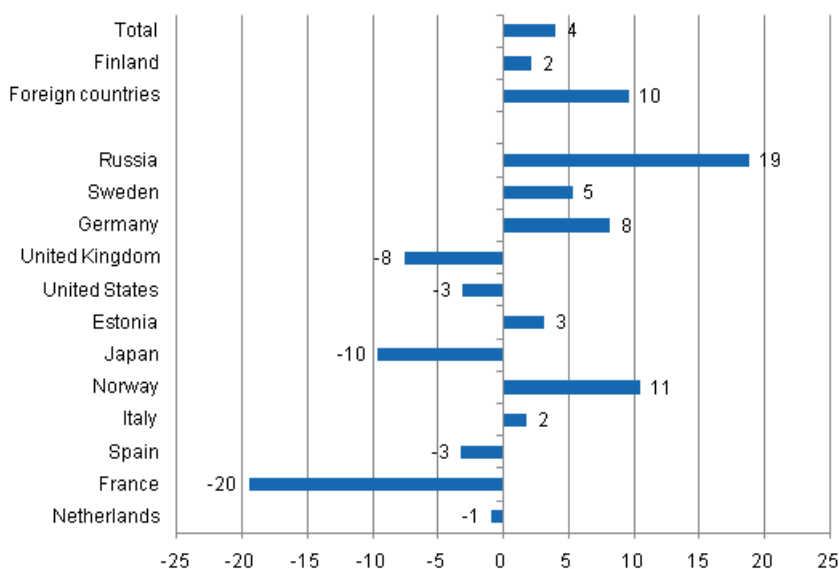
Accommodation statistics

2011 September

Nights spent by foreign tourists in Finland up by 10 per cent in September

The number of recorded nights spent by foreign tourists at Finnish accommodation establishments in September 2011 was 396,000, which was 10 per cent higher than in September 2010. The total number of overnight stays increased by four per cent from last year and accommodation establishments recorded a total of 1.6 million of them. The number of nights spent by resident tourists went up by two per cent and totalled 1.2 million in September 2011. These figures are preliminary data from Statistics Finland's statistics on accommodation establishments and they have been collected from accommodation establishments with at least 10 rooms, cottages, or caravan pitches with electricity connection, and youth hostels.

Change in overnight stays in September 2011/2010, %

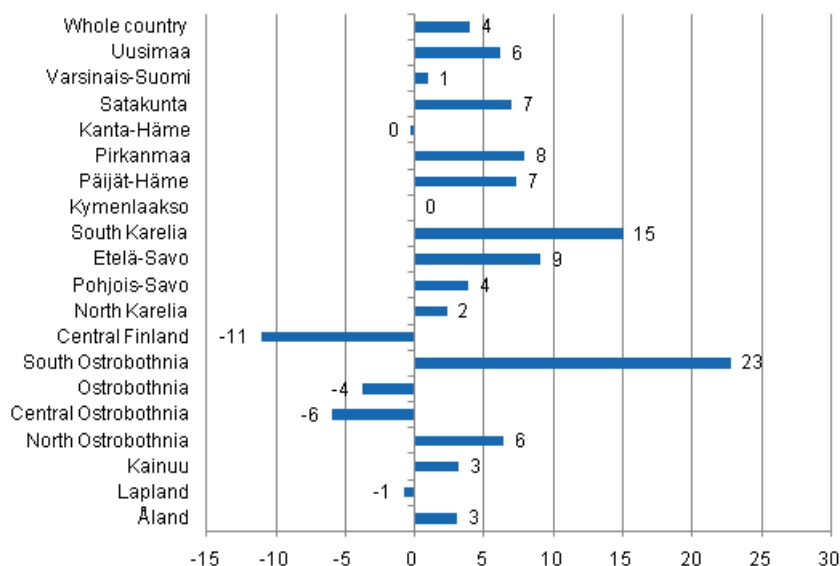


As usual, Russians were the largest group of foreign tourists in September with their 64,500 overnight stays. The number of nights recorded for them at Finnish accommodation establishments was 19 per cent higher than one year earlier. Swedes were next with 44,000 nights spent. The number was five per cent

higher than in September 2010. Visitors from Germany came third with 37,000 nights spent, which was eight per cent up year-on-year. Nights spent by visitors from Norway increased by 11 per cent from twelve months back. By contrast, overnight stays by French tourists fell by one-fifth and those by visitors from Japan by 10 per cent from last year. The growth in the number of nights spent by tourists from the United States halted and accommodation establishment recorded 21,000 overnight stays for them, which was three per cent down on September 2010.

By region, the total number of overnight stays increased most in the regions of South Ostrobothnia, up by 23 per cent, and South Karelia, up by 15 per cent. In Etelä-Savo, recorded overnight stays went up by nine per cent and in Pirkanmaa by eight per cent from the year before. Overnight stays increased by seven per cent in both Päijät-Häme and Satakunta. Six per cent growth was reached in Uusimaa and North Ostrobothnia. Overnight stays decreased most in Central Finland, 11 per cent down, and in Central Ostrobothnia, six per cent down. In the whole country, overnight stays increased by four per cent from September 2010.

Change in overnight stays in September by region 2011 / 2010, %



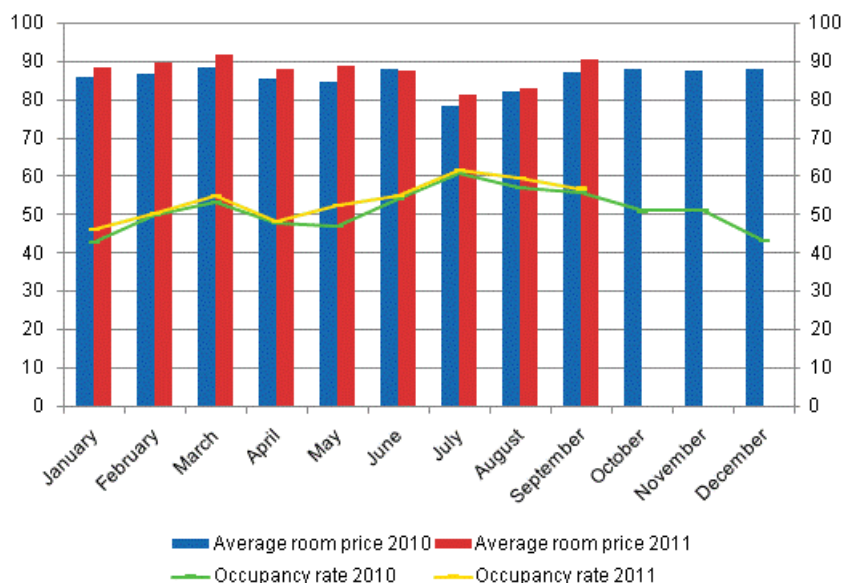
Overnight stays in hotels increased by three per cent in September

The total number of nights spent in hotels rose to 1.3 million in September, which was three per cent up on the year before. Overnight stays by foreign tourists increased by seven per cent and hotels recorded a total of 340,000 of them. Recorded nights spent by resident tourists in hotels numbered just under 970,000. The number was two per cent higher than one year previously.

The occupancy rate of hotel rooms was 56.8 per cent in September. One year earlier it was 55.9 per cent. Among the regions, the highest occupancy rates of hotel rooms were measured in Uusimaa, 72.3 per cent, and South Karelia, 65.2 per cent. In Lappeenranta, the hotel room occupancy rate was 81.4 per cent and in Vantaa 72.0 per cent. Hotel room occupancy rate in Helsinki was 80.2 per cent.

In September, the realised average price of a hotel room was EUR 90.27 per day for the whole country. Twelve months previously it was EUR 87.27.

Hotel room occupancy rate and the monthly average price

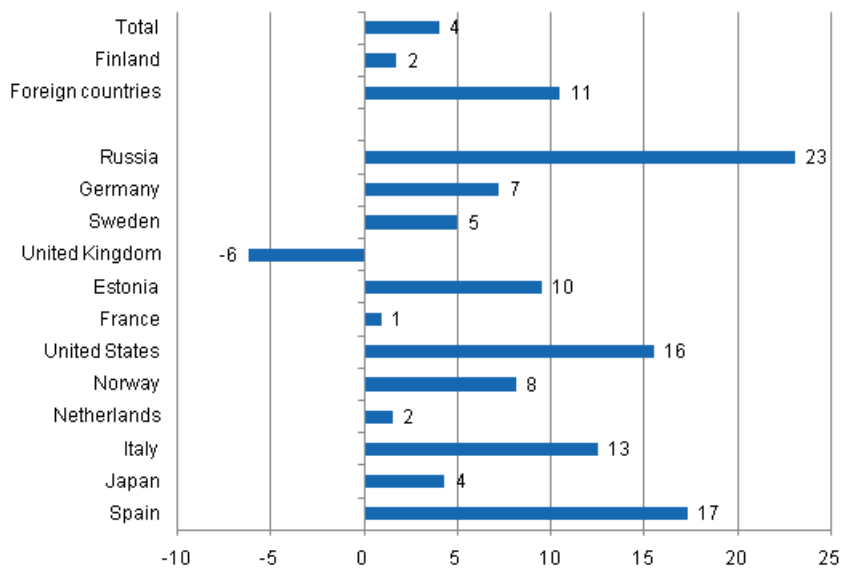


Total number of nights spent at all accommodation establishments went up by four per cent in the January to September 2011 period

Between January and September, the number of nights spent at accommodation establishments in Finland totalled 16 million, which was four per cent up on the respective time period of last year. Overnight stays by foreign tourists increased by 11 per cent and accommodation establishments recorded a total of 4.4 million of them. Overnight stays by resident tourists numbered 11.6 million, which was two per cent more than in the same time period last year.

Among the most important countries of inbound tourism to Finland, overnight stays by visitors from Russia increased most, or by 23 per cent, in the January to September period. Overnight stays by Spanish tourists went up by 17 per cent and those by visitors from the United States by almost equally much, or by 16 per cent. Overnight stays by Italian tourists increased by 13 per cent and those by Estonian tourists by 10 per cent year-on-year. The numbers of overnight stays by visitors from the other main countries of inbound tourism grew more moderately. By contrast, nights spent by tourists from Britain have been decreasing almost throughout the current year and over the January to September period the drop amounted to a further six per cent.

Change in overnight stays in January-September 2011/2010, %



Contents

Tables

Appendix tables

Appendix table 1. Capacity and its utilization, September 2011.....	6
Appendix table 2. Nights spend in all establishments, September 2011.....	7
Appendix table 3. Hotel capacity and capacity utilization, September 2011.....	8
Appendix table 4. Nights spend in hotels, September 2011.....	9
Appendix table 5. Visitor arrivals and nights spend by country of residence, September 2011.....	10
Appendix table 6. Nights spend in all establishments, 2011.....	10

Appendix tables

Appendix table 1. Capacity and its utilization, September 2011

Region / municipality	Number of establishments	Number of bedrooms	Occupancy rate of bedrooms %	Change of the occupancy rate compared to previous year, %-units	Average price of nights spend, in euros (incl. VAT 9 %)
Whole country	1 104	59 011	52,5	0,5	55,76
Mainland Finland	1 041	57 594	53,0	0,4	55,78
Uusimaa	137	14 462	71,5	1,9	71,85
Helsinki	59	8 484	79,7	3,6	74,76
Varsinais-Suomi	71	3 826	50,6	-3,2	51,93
Turku	23	2 182	57,5	-9,4	55,29
Satakunta	36	1 504	41,5	-0,6	53,92
Pori	9	721	42,3	-3,5	50,85
Kanta-Häme	29	1 443	46,1	-1,0	51,54
Hämeenlinna	13	820	49,9	-3,6	54,96
Pirkanmaa	69	4 156	56,3	-0,9	57,63
Tampere	26	2 598	66,0	-2,3	64,73
Päijät-Häme	31	1 976	45,5	5,0	50,00
Lahti	10	743	48,9	6,8	56,18
Kymenlaakso	22	1 153	39,7	-3,9	50,05
Kouvola	10	572	36,9	-5,0	44,42
South Karelia	30	1 449	59,1	8,3	55,24
Lappeenranta	10	612	73,0	14,7	55,62
Etelä-Savo	59	2 139	34,6	-3,7	41,06
Mikkeli	7	533	49,9	-11,2	50,01
Pohjois-Savo	47	2 531	49,3	0,1	49,74
Kuopio	13	1 026	63,8	-0,7	56,94
North Karelia	46	1 714	40,9	2,5	45,24
Joensuu	11	760	51,8	5,2	55,76
Central Finland	50	2 829	50,3	0,4	51,02
Jyväskylä	14	1 312	65,0	0,6	67,70
South Ostrobothnia	42	1 713	48,9	2,5	43,38
Seinäjoki	9	617	55,6	-3,2	56,29
Ostrobothnia	33	1 433	50,3	4,4	60,02
Vaasa	10	858	58,2	11,6	63,88
Central Ostrobothnia	18	598	47,1	-3,2	50,71
Kokkola	8	408	55,2	-3,1	58,72
North Ostrobothnia	90	4 231	48,4	2,5	46,62
Oulu	11	1 451	69,1	5,9	60,53
Kainuu	47	2 204	42,3	-4,1	32,17
Kajaani	9	495	34,6	-5,4	47,98
Lapland	184	8 233	41,8	-1,4	40,64
Rovaniemi	19	1 389	35,8	-0,5	40,78
Åland	63	1 417	32,0	0,9	.
Maarianhamina	13	622	45,8	3,6	.

Appendix table 2. Nights spend in all establishments, September 2011

Region / municipality	Nights spend, total	Change of nights spend, total, %	Nights spend, residents	Change of nights spend, residents, %	Nights spend, non-residents	Change of nights spend, non-residents, %
Whole country	1 562 554	4,0	1 166 374	2,2	396 180	9,6
Mainland Finland	1 531 687	4,0	1 153 526	2,2	378 161	9,8
Uusimaa	450 208	6,2	236 722	4,9	213 486	7,6
Helsinki	295 316	5,7	127 718	4,8	167 598	6,4
Varsinais-Suomi	92 294	1,0	74 315	6,5	17 979	-17,0
Turku	57 207	-2,9	44 492	8,4	12 715	-28,9
Satakunta	29 255	7,0	23 594	5,9	5 661	12,0
Pori	14 137	1,0	12 017	1,1	2 120	0,5
Kanta-Häme	35 850	-0,3	31 744	10,0	4 106	-41,9
Hämeenlinna	21 980	0,2	19 290	12,1	2 690	-43,2
Pirkanmaa	122 440	7,9	93 862	3,7	28 578	24,7
Tampere	77 020	1,5	60 388	4,4	16 632	-7,9
Päijät-Häme	48 969	7,3	43 747	7,6	5 222	4,8
Lahti	16 170	9,8	12 684	17,1	3 486	-10,6
Kymenlaakso	25 947	0,0	17 213	-16,2	8 734	61,6
Kouvola	10 217	-14,4	8 462	-18,1	1 755	9,5
South Karelia	42 866	15,1	24 813	10,9	18 053	21,5
Lappeenranta	19 817	18,6	14 012	22,8	5 805	9,5
Etelä-Savo	41 954	9,1	32 153	3,6	9 801	32,5
Mikkeli	12 751	-13,8	10 223	-17,3	2 528	3,9
Pohjois-Savo	63 072	3,9	57 683	5,4	5 389	-9,5
Kuopio	30 120	0,6	27 324	2,1	2 796	-12,0
North Karelia	37 220	2,3	33 132	1,6	4 088	8,2
Joensuu	16 869	11,2	14 081	5,3	2 788	55,1
Central Finland	72 016	-11,1	63 892	-10,2	8 124	-17,8
Jyväskylä	37 421	-1,5	31 951	1,1	5 470	-14,1
South Ostrobothnia	49 711	22,8	44 047	13,8	5 664	213,8
Seinäjoki	16 703	16,0	15 473	18,1	1 230	-5,0
Ostrobothnia	27 810	-3,8	21 238	-10,8	6 572	28,7
Vaasa	17 671	2,8	12 077	-8,6	5 594	40,6
Central Ostrobothnia	13 857	-6,0	12 733	-1,4	1 124	-38,5
Kokkola	9 159	-0,7	8 370	1,6	789	-20,1
North Ostrobothnia	111 135	6,4	98 998	3,7	12 137	34,6
Oulu	46 233	8,4	38 866	5,9	7 367	24,5
Kainuu	65 685	3,2	60 966	2,0	4 719	22,4
Kajaani	7 633	-12,1	7 108	-11,3	525	-21,4
Lapland	201 398	-0,8	182 674	-2,7	18 724	22,3
Rovaniemi	25 556	4,6	18 549	-1,4	7 007	24,7
Åland	30 867	3,1	12 848	0,2	18 019	5,3
Maarianhamina	15 599	12,3	7 116	-2,7	8 483	29,1

Appendix table 3. Hotel capacity and capacity utilization, September 2011

Region / municipality	Number of establishments	Number of bedrooms	Occupancy rate of bedrooms %	Change of the occupancy rate compared to previous year, %-units	Room price, euros (Vat inc. 9 %)	¹⁾ RevPAR, euros (Vat inc. 9 %)
Whole country	631	49 893	56,8	0,9	90,27	51,23
Mainland Finland	616	49 141	57,0	0,8	90,23	51,39
Uusimaa	113	14 049	72,3	2,2	102,96	74,41
Helsinki	52	8 316	80,2	4,0	106,96	85,80
Varsinais-Suomi	39	3 181	54,2	-4,5	82,95	44,99
Turku	19	2 084	58,4	-9,4	85,60	49,96
Satakunta	23	1 171	48,7	-0,4	82,00	39,92
Pori	7	623	46,7	-3,7	78,64	36,76
Kanta-Häme	17	1 220	50,2	0,5	89,02	44,70
Hämeenlinna	8	733	53,4	-1,6	96,78	51,64
Pirkanmaa	41	3 324	61,3	-1,3	93,97	57,56
Tampere	21	2 319	67,5	-3,5	98,11	66,25
Päijät-Häme	17	1 766	47,6	5,7	81,02	38,52
Lahti	8	714	49,1	6,9	82,03	40,30
Kymenlaakso	15	946	42,5	-3,6	80,75	34,34
Kouvola	6	435	40,7	-5,5	75,35	30,64
South Karelia	17	1 204	65,2	9,3	93,50	60,95
Lappeenranta	6	499	81,4	16,2	85,90	69,97
Etelä-Savo	29	1 579	39,9	-2,0	74,96	29,93
Mikkeli	5	487	51,4	-11,1	77,09	39,66
Pohjois-Savo	28	2 205	52,4	1,0	83,73	43,87
Kuopio	8	939	65,3	-0,7	87,46	57,12
North Karelia	24	1 349	46,3	3,2	78,81	36,48
Joensuu	10	750	52,2	4,7	80,69	42,11
Central Finland	27	2 482	53,4	-0,3	84,11	44,95
Jyväskylä	9	1 202	69,0	1,4	96,58	66,67
South Ostrobothnia	23	1 420	53,4	1,2	74,63	39,88
Seinäjoki	8	617	55,6	-3,2	77,65	43,15
Ostrobothnia	23	1 287	54,3	5,9	76,69	41,65
Vaasa	10	858	58,2	11,6	78,24	45,56
Central Ostrobothnia	10	506	51,5	-1,4	74,90	38,59
Kokkola	5	368	57,2	-4,5	79,38	45,44
North Ostrobothnia	49	3 350	53,0	3,9	80,12	42,48
Oulu	10	1 423	69,5	5,9	86,86	60,35
Kainuu	22	1 667	47,4	-4,7	67,97	32,20
Kajaani	7	448	36,3	-6,5	73,10	26,55
Lapland	99	6 435	44,0	-1,6	79,32	34,88
Rovaniemi	12	1 247	36,8	-0,5	69,52	25,58
Åland	15	752	43,4	3,5	.	.
Maarianhamina	7	500	52,5	6,3	.	.

1) RevPar = Average revenue per available room, equivalent to the accommodation revenue of an establishment divided by the available room capacity.

Appendix table 4. Nights spend in hotels, September 2011

Region / municipality	Nights spend, total	Change of nights spend, total, %	Nights spend, residents	Change of nights spend, residents, %	Nights spend, non-residents	Change of nights spend, non-residents, %
Whole country	1 308 327	3,4	968 496	2,3	339 831	6,8
Mainland Finland	1 291 374	3,4	961 069	2,3	330 305	6,7
Uusimaa	428 218	7,2	223 476	6,0	204 742	8,6
Helsinki	280 973	6,4	121 307	4,7	159 666	7,8
Varsinais-Suomi	78 943	-0,8	63 216	6,0	15 727	-21,4
Turku	55 008	-3,8	43 586	8,0	11 422	-32,1
Satakunta	23 433	5,1	18 130	4,1	5 303	8,6
Pori	12 293	3,8	10 195	4,0	2 098	3,1
Kanta-Häme	28 534	-1,4	24 899	4,0	3 635	-27,3
Hämeenlinna	17 937	-4,6	15 318	2,6	2 619	-32,2
Pirkanmaa	94 347	1,4	77 883	3,5	16 464	-7,2
Tampere	69 571	0,5	55 384	3,5	14 187	-9,8
Päijät-Häme	41 290	8,7	36 834	9,0	4 456	6,5
Lahti	15 267	9,4	11 930	16,3	3 337	-9,8
Kymenlaakso	17 216	-6,4	11 450	-18,7	5 766	33,7
Kouvola	7 369	-13,7	5 755	-20,1	1 614	20,7
South Karelia	39 109	15,3	22 005	11,1	17 104	21,2
Lappeenranta	17 890	18,4	12 703	23,2	5 187	8,2
Etelä-Savo	30 597	8,6	25 235	6,8	5 362	17,5
Mikkeli	11 486	-12,9	9 464	-13,6	2 022	-9,9
Pohjois-Savo	55 599	-1,6	51 652	0,2	3 947	-20,4
Kuopio	26 981	-1,9	24 500	-0,4	2 481	-14,4
North Karelia	29 766	5,5	26 336	4,8	3 430	11,5
Joensuu	16 780	11,7	14 014	5,5	2 766	59,1
Central Finland	63 319	-12,4	55 923	-12,8	7 396	-9,6
Jyväskylä	35 339	-4,5	29 913	-2,4	5 426	-14,8
South Ostrobothnia	38 025	20,1	36 124	20,8	1 901	7,6
Seinäjoki	14 188	14,8	12 958	17,1	1 230	-5,0
Ostrobothnia	25 830	-3,1	19 286	-10,6	6 544	28,6
Vaasa	17 671	2,8	12 077	-8,6	5 594	40,6
Central Ostrobothnia	11 026	2,7	10 071	3,9	955	-8,3
Kokkola	8 391	-1,1	7 746	1,4	645	-24,0
North Ostrobothnia	84 503	7,6	75 437	5,4	9 066	29,8
Oulu	42 395	9,3	36 026	6,6	6 369	28,0
Kainuu	50 674	-0,2	47 360	-0,5	3 314	4,1
Kajaani	7 200	-13,1	6 681	-12,4	519	-21,5
Lapland	150 945	-0,8	135 752	-3,0	15 193	25,7
Rovaniemi	22 179	4,5	15 644	-2,7	6 535	27,0
Åland	16 953	6,9	7 427	1,3	9 526	11,7
Maarianhamina	12 935	12,3	5 787	-3,2	7 148	28,9

Appendix table 5. Visitor arrivals and nights spend by country of residence, September 2011

Country of residence	Visitor arrivals in all accommodation establishments	Nights spend in all accommodation establishments	Change of nights spend in all accommodation establishments, %	Nights spend in hotels	Change of nights spend in hotels, %
Total	853 316	1 562 554	4,0	1 308 327	3,4
Finland	651 887	1 166 374	2,2	968 496	2,3
Foreign countries	201 429	396 180	9,6	339 831	6,8
Sweden	27 169	44 120	5,3	37 341	7,9
Germany	18 328	36 723	8,2	31 851	7,4
Russia	39 003	64 504	18,8	56 099	18,7
United Kingdom	10 581	21 126	-7,6	20 582	-7,2
United States	10 065	20 869	-3,1	20 562	-2,1
Norway	6 607	11 647	10,5	10 712	10,8
Netherlands	4 461	8 394	-0,9	7 824	-1,3
Italy	4 035	8 941	1,8	8 063	-1,4
France	3 882	8 401	-19,5	7 739	-16,4
Japan	7 365	14 431	-9,6	13 712	-10,7
Estonia	7 031	17 843	3,1	11 662	-3,8
Spain	4 487	8 662	-3,2	8 109	2,5

Appendix table 6. Nights spend in all establishments, 2011

Month	Nights spend, total	Change of nights spend, total, %	Nights spend, residents	Change of nights spend, residents, %	Nights spend, non-residents	Change of nights spend, non-residents, %
Total	15 989 691	4,0	11 636 647	1,7	4 353 044	10,5
January	1 314 799	7,9	777 121	6,8	537 678	9,4
February	1 341 042	1,2	991 229	1,2	349 813	1,5
March	1 673 729	2,9	1 255 029	0,3	418 700	11,8
April	1 397 122	1,1	1 094 338	-3,1	302 784	19,4
May	1 330 478	9,5	965 547	8,2	364 931	13,2
June	2 026 725	4,1	1 504 211	2,2	522 514	10,0
July	3 138 531	2,3	2 394 135	0,5	744 396	8,6
August	2 204 711	5,3	1 488 663	1,8	716 048	13,6
September	1 562 554	4,0	1 166 374	2,2	396 180	9,6

Suomen virallinen tilasto
Finlands officiella statistik
Official Statistics of Finland

Transport and Tourism 2011

Inquiries

Marjut Tuominen (09) 1734 3556

Merja Rönkä (09) 1734 3209

Director in charge:

Hannele Orjala

liikenne.matkailu@stat.fi

www.stat.fi

Source: Accommodation Statistics 2011. Statistics Finland