

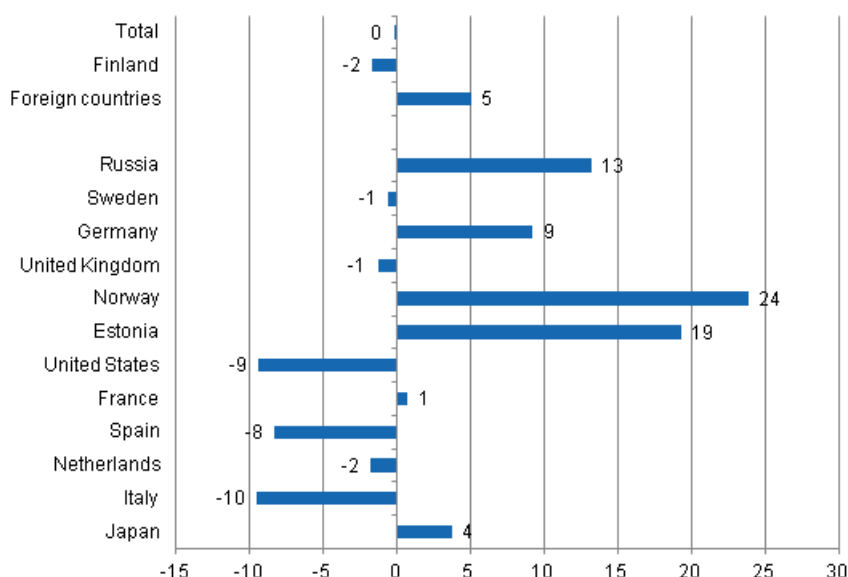
Accommodation statistics

2012, April

Nights spent by foreign tourists in Finland up by 5 per cent in April 2012

The number of recorded nights spent by foreign tourists at Finnish accommodation establishments in April 2012 was 318,000, which was five per cent more than one year earlier. In contrast, the number of nights spent by resident tourists at accommodation establishments went down by two per cent and totalled close on 1.1 million in April 2012. The total number of nights spent remained on level with the previous year and altogether 1.4 million overnight stays were recorded at accommodation establishments. These figures are preliminary data from Statistics Finland's statistics on accommodation establishments and they have been collected from accommodation establishments with at least 20 beds or caravan pitches with electricity connection, and youth hostels.

Change in overnight stays in April 2012/2011, %

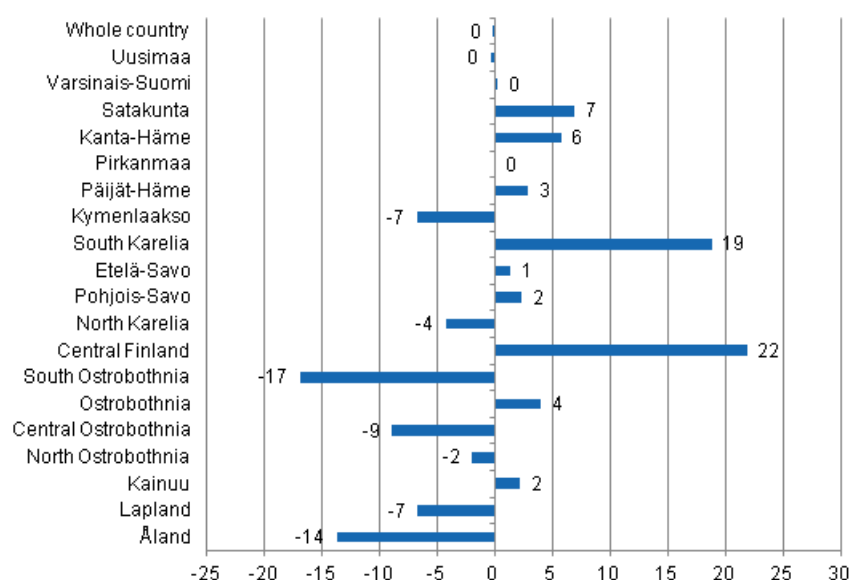


The prolonged growth in the number of nights spent by Russian tourists continued in April 2012. A total of 76,000 overnight stays at Finnish accommodation establishments were recorded for them, which was

13 per cent more than one year before. Swedish and German visitors came next. Swedes spent 34,000 nights, which, however, was still one per cent less than twelve months earlier. By contrast, overnight stays recorded for German visitors increased by nine per cent and totalled 28,000 in April 2012. Visitors from Britain were the fourth largest group with 22,000 overnight stays. This was one per cent less than in the year before. However, overnight stays by Norwegian tourists increased by 24 per cent and those by Estonian tourists by 19 per cent. Good 15,000 overnight stays at accommodation establishments were recorded for both of them. Smaller changes took place in the nights spent by visitors from the other most important countries of inbound tourism to Finland.

By region, the total number of overnight stays in April increased most in Central Finland, up by 22 per cent. The number of overnight stays grew by 19 per cent in South Karelia and by seven per cent in Satakunta. Six per cent more overnight stays than in April 2011 were recorded in Kanta-Häme. Growth of three to four per cent was reached in Päijät-Häme and Ostrobothnia. Overnight stays decreased most in South Ostrobothnia, by 17 per cent, and in Åland, by 14 per cent. Overnight stays in the whole country remained on level with April 2011.

Change in overnight stays in April by region 2012 / 2011, %



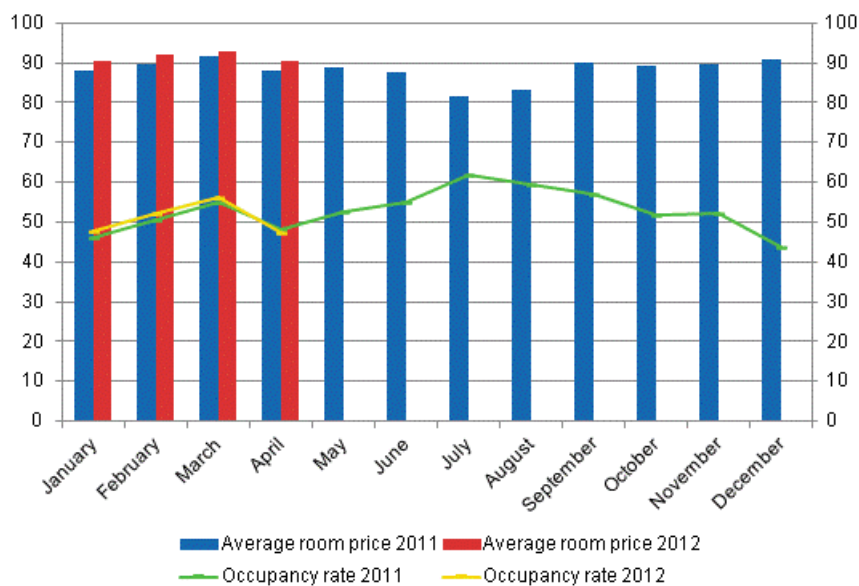
Number of nights spent in hotels almost equal to April 2011

The total number of nights spent in hotels rose to 1.2 million in April 2012, which was almost the same as one year before. Overnight stays by foreign tourists increased by four per cent and hotels recorded a total of 287,000 of them. Recorded nights spent by resident tourists in hotels numbered 899,000. Their number was nearly two per cent down from April 2011.

The occupancy rate of hotel rooms was 47.5 per cent in April. One year earlier, it was 48.2 per cent. Among the regions, the highest occupancy rates of hotel rooms were measured in Uusimaa, 55.5 per cent, and Central Finland, 54.1 per cent. In Jyväskylä, the hotel room occupancy rate was 65.8 per cent and in Vantaa 63.6 per cent. Hotel room occupancy rate in Helsinki was 59.2 per cent.

In April, the realised average price of a hotel room was EUR 90.29 per day for the whole country. Twelve months previously it was EUR 87.87.

Hotel room occupancy rate and the monthly average price

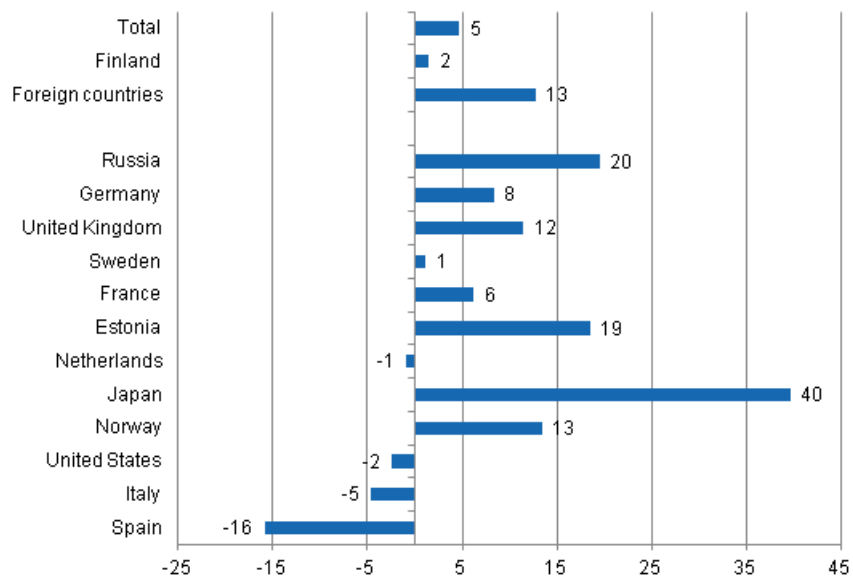


Total number of nights spent at all accommodation establishments grew by 5 per cent in January to April 2012

Over January to April 2012, the number of nights spent at accommodation establishments in Finland totalled six million, which was five per cent up on the same period of last year. Overnight stays by foreign tourists went up by 13 per cent and accommodation establishments recorded a total of 1.8 million of them. Overnight stays by resident tourists numbered 4.2 million, which was 1.5 per cent more than in January to April 2011.

Overnight stays recorded at Finnish accommodation establishments for Russian visitors in January to April numbered 590,000, which was one-fifth up on the same period one year earlier. German and British visitors came next. Overnight stays by German visitors increased by eight per cent and numbered 146,000. Visitors from Britain spent nearly 138,000 nights at accommodation establishments. The number was 11.5 per cent higher than twelve months back. Overnight stays by Swedes numbered 115,000, which was one per cent more than in the January to April period of 2011. The number of nights spent by French visitors was good 98,000, up by six per cent from one year back. The number of nights spent by Estonian visitors rose to nearly 80,000, which was 18.5 per cent up on the January to April period of 2011. However, the biggest increase of 40 per cent was recorded in overnight stays by Japanese visitors, who spent 56,000 nights at accommodation establishments.

Change in overnight stays in January-April 2012/2011, %



Contents

Tables

Appendix tables

Appendix table 1. Capacity and its utilization, April 2012.....	6
Appendix table 2. Nights spend in all establishments, April 2012.....	7
Appendix table 3. Hotel capacity and capacity utilization, April 2012.....	8
Appendix table 4. Nights spend in hotels, April 2012.....	9
Appendix table 5. Visitor arrivals and nights spend by country of residence, April 2012.....	10
Appendix table 6. Nights spend in all establishments, 2012.....	10

Appendix tables

Appendix table 1. Capacity and its utilization, April 2012

Region / municipality	Number of establishments	Number of bedrooms	Occupancy rate of bedrooms %	Change of the occupancy rate compared to previous year, %-units	Average price of nights spend, in euros (incl. VAT 9 %)
Whole country	1 048	57 738	44,7	-1,1	52,02
Mainland Finland	1 009	56 617	45,2	-1,0	52,01
Uusimaa	141	14 610	55,2	-1,8	65,01
Helsinki	58	8 545	59,3	-1,4	67,57
Varsinais-Suomi	65	3 690	45,2	-3,1	45,08
Turku	22	2 157	49,0	-3,9	46,64
Satakunta	37	1 466	37,3	2,2	55,94
Pori	11	743	40,7	2,3	48,76
Kanta-Häme	28	1 373	38,9	3,6	50,64
Hämeenlinna	11	771	41,1	2,4	55,54
Pirkanmaa	65	4 082	46,5	-1,2	52,12
Tampere	25	2 596	56,6	0,1	56,94
Päijät-Häme	28	1 883	40,2	2,6	48,36
Lahti	10	715	44,5	2,8	57,51
Kymenlaakso	22	1 108	32,8	-3,6	51,76
Kouvola	8	539	32,0	-3,5	48,68
South Karelia	29	1 655	46,2	-5,5	47,39
Lappeenranta	13	917	54,0	-4,3	47,73
Etelä-Savo	54	2 123	27,9	-3,9	46,68
Mikkeli	9	570	39,0	-8,0	51,41
Pohjois-Savo	44	2 402	47,2	2,0	48,25
Kuopio	15	1 061	55,8	2,9	55,44
North Karelia	47	1 584	30,4	-2,4	46,04
Joensuu	12	781	39,7	-2,2	54,58
Central Finland	46	2 771	50,0	10,0	46,14
Jyväskylä	13	1 308	61,7	9,6	58,85
South Ostrobothnia	41	1 683	35,2	-5,0	41,22
Seinäjoki	9	616	39,6	-13,4	55,28
Ostrobothnia	27	1 282	44,2	6,7	54,87
Vaasa	8	802	50,8	8,1	58,36
Central Ostrobothnia	14	543	35,0	-1,9	52,37
Kokkola	7	386	40,0	-1,2	57,87
North Ostrobothnia	92	4 105	44,7	-1,8	44,44
Oulu	11	1 451	56,9	-1,5	55,70
Kainuu	43	2 041	43,6	-0,0	41,58
Kajaani	7	416	34,7	4,6	51,73
Lapland	186	8 216	40,7	-3,7	43,17
Rovaniemi	17	1 379	32,9	-0,1	40,28
Åland	39	1 121	19,3	-7,1	.
Maarianhamina	10	567	26,5	-9,0	.

Appendix table 2. Nights spend in all establishments, April 2012

Region / municipality	Nights spend, total	Change of nights spend, total, %	Nights spend, residents	Change of nights spend, residents, %	Nights spend, non-residents	Change of nights spend, non-residents, %
Whole country	1 394 769	-0,2	1 076 663	-1,7	318 106	5,0
Mainland Finland	1 379 755	-0,0	1 071 888	-1,5	307 867	5,2
Uusimaa	362 316	-0,4	203 296	2,1	159 020	-3,4
Helsinki	230 540	-2,5	109 337	0,2	121 203	-4,9
Varsinais-Suomi	84 943	0,2	71 089	0,3	13 854	-0,4
Turku	52 684	-1,3	41 970	-3,5	10 714	8,6
Satakunta	22 671	6,9	18 821	9,8	3 850	-5,2
Pori	12 458	12,9	10 932	17,9	1 526	-13,5
Kanta-Häme	27 271	5,7	24 508	3,7	2 763	27,2
Hämeenlinna	15 976	4,9	14 078	3,7	1 898	14,5
Pirkanmaa	98 469	-0,0	84 116	-0,7	14 353	3,9
Tampere	69 718	6,5	57 887	6,2	11 831	8,2
Päijät-Häme	41 391	2,9	36 444	0,3	4 947	27,9
Lahti	14 038	-4,9	10 421	-9,1	3 617	9,6
Kymenlaakso	18 053	-6,8	12 428	-13,0	5 625	10,4
Kouvola	7 856	-18,5	6 741	-20,9	1 115	-0,3
South Karelia	41 577	18,8	22 273	26,1	19 304	11,3
Lappeenranta	25 164	69,7	16 221	82,1	8 943	51,0
Etelä-Savo	30 654	1,3	26 187	-1,6	4 467	22,6
Mikkeli	10 730	-4,4	8 782	-9,0	1 948	24,4
Pohjois-Savo	59 050	2,3	53 963	0,3	5 087	29,7
Kuopio	27 885	7,4	25 263	4,5	2 622	47,1
North Karelia	25 051	-4,3	21 590	-6,3	3 461	10,8
Joensuu	13 047	-7,6	10 255	-15,0	2 792	36,2
Central Finland	81 884	21,9	68 699	10,6	13 185	161,3
Jyväskylä	39 239	25,0	28 469	3,8	10 770	172,0
South Ostrobothnia	35 455	-16,9	34 140	-17,7	1 315	10,9
Seinäjoki	12 204	-12,3	11 392	-12,7	812	-6,2
Ostrobothnia	25 360	4,0	20 717	1,7	4 643	15,9
Vaasa	17 614	4,0	14 107	2,9	3 507	8,6
Central Ostrobothnia	9 451	-9,0	8 746	-9,6	705	-1,3
Kokkola	6 406	-5,4	5 806	-6,4	600	4,9
North Ostrobothnia	116 311	-2,0	103 595	-3,1	12 716	8,2
Oulu	39 603	-2,5	34 066	-4,4	5 537	10,5
Kainuu	77 204	2,2	74 905	2,0	2 299	10,4
Kajaani	6 263	-8,6	5 774	-10,6	489	24,4
Lapland	222 644	-6,7	186 371	-9,8	36 273	12,8
Rovaniemi	22 374	-6,6	13 780	-17,1	8 594	17,5
Åland	15 014	-13,7	4 775	-32,2	10 239	-1,2
Maarianhamina	8 400	-22,3	3 491	-34,9	4 909	-9,9

Appendix table 3. Hotel capacity and capacity utilization, April 2012

Region / municipality	Number of establishments	Number of bedrooms	Occupancy rate of bedrooms %	Change of the occupancy rate compared to previous year, %-units	Room price, euros (Vat inc. 9 %)	¹⁾ RevPAR, euros (Vat inc. 9 %)
Whole country	628	50 003	47,5	-0,7	90,29	42,91
Mainland Finland	615	49 279	47,9	-0,6	90,27	43,21
Uusimaa	116	14 236	55,5	-2,2	98,45	54,68
Helsinki	52	8 432	59,2	-2,0	103,37	61,16
Varsinais-Suomi	37	3 075	50,0	-1,0	76,69	38,33
Turku	18	2 046	50,3	-3,2	78,63	39,56
Satakunta	23	1 172	43,0	2,6	83,37	35,87
Pori	8	637	44,8	3,5	75,46	33,80
Kanta-Häme	18	1 223	40,8	3,7	85,31	34,81
Hämeenlinna	8	729	41,9	1,8	94,00	39,35
Pirkanmaa	42	3 506	48,9	-1,1	89,74	43,85
Tampere	22	2 444	55,9	0,6	90,89	50,80
Päijät-Häme	16	1 732	42,0	2,5	80,89	33,93
Lahti	7	677	45,2	2,9	83,58	37,75
Kymenlaakso	15	934	35,5	-4,4	82,11	29,12
Kouvola	5	419	36,8	-5,1	78,50	28,89
South Karelia	17	1 346	49,0	-6,1	91,81	44,98
Lappeenranta	7	716	57,4	-4,5	85,38	49,01
Etelä-Savo	27	1 701	31,2	-4,1	74,44	23,22
Mikkeli	6	504	42,0	-6,2	80,06	33,66
Pohjois-Savo	27	2 082	50,5	3,6	83,26	42,02
Kuopio	9	890	61,9	7,6	88,26	54,67
North Karelia	25	1 339	33,6	-2,4	78,20	26,27
Joensuu	10	750	40,6	-1,7	77,75	31,60
Central Finland	26	2 442	54,1	11,2	91,98	49,77
Jyväskylä	9	1 202	65,8	11,0	94,73	62,36
South Ostrobothnia	25	1 444	40,4	-5,9	70,99	28,70
Seinäjoki	8	616	39,6	-13,4	76,70	30,38
Ostrobothnia	21	1 228	44,9	6,3	81,68	36,71
Vaasa	8	802	50,8	8,1	84,11	42,72
Central Ostrobothnia	10	496	36,9	-0,8	76,15	28,12
Kokkola	5	358	41,5	-0,6	79,85	33,17
North Ostrobothnia	47	3 286	47,1	-1,0	88,97	41,87
Oulu	10	1 423	57,3	-1,2	85,84	49,20
Kainuu	23	1 634	47,6	-0,8	87,20	41,48
Kajaani	6	369	37,3	5,4	77,82	29,05
Lapland	100	6 403	42,4	-2,4	91,99	39,01
Rovaniemi	12	1 242	33,9	-0,1	68,87	23,35
Åland	13	724	23,2	-9,3	.	.
Maarianhamina	7	500	28,3	-8,4	.	.

1) RevPar = Average revenue per available room, equivalent to the accommodation revenue of an establishment divided by the available room capacity.

Appendix table 4. Nights spend in hotels, April 2012

Region / municipality	Nights spend, total	Change of nights spend, total, %	Nights spend, residents	Change of nights spend, residents, %	Nights spend, non-residents	Change of nights spend, non-residents, %
Whole country	1 185 880	-0,3	898 863	-1,6	287 017	4,0
Mainland Finland	1 176 122	-0,1	895 294	-1,4	280 828	4,1
Uusimaa	345 261	-1,1	193 012	1,2	152 249	-3,9
Helsinki	218 578	-3,5	103 254	-1,4	115 324	-5,3
Varsinais-Suomi	75 371	0,3	62 938	-0,1	12 433	2,0
Turku	51 102	-0,5	41 250	-3,6	9 852	14,9
Satakunta	19 688	9,0	16 027	14,2	3 661	-9,1
Pori	11 160	22,7	9 677	31,8	1 483	-15,5
Kanta-Häme	23 438	6,0	20 756	3,7	2 682	27,4
Hämeenlinna	14 518	4,2	12 620	2,8	1 898	14,5
Pirkanmaa	84 532	5,0	71 827	5,3	12 705	3,3
Tampere	64 810	9,5	53 912	9,2	10 898	11,0
Päijät-Häme	38 713	1,8	34 340	-0,9	4 373	29,5
Lahti	13 324	-5,5	9 953	-10,5	3 371	12,8
Kymenlaakso	14 316	-9,4	9 413	-14,5	4 903	2,2
Kouvola	6 547	-14,1	5 442	-16,9	1 105	2,9
South Karelia	37 008	9,5	18 911	13,5	18 097	5,6
Lappeenranta	21 830	49,0	13 864	57,6	7 966	36,1
Etelä-Savo	25 366	-1,2	22 168	-3,5	3 198	18,4
Mikkeli	9 937	-5,8	8 386	-10,1	1 551	26,5
Pohjois-Savo	52 312	-1,2	48 835	-1,6	3 477	3,4
Kuopio	25 343	5,7	23 183	3,6	2 160	35,2
North Karelia	22 098	-5,5	18 903	-8,0	3 195	12,9
Joensuu	12 899	-8,4	10 107	-16,0	2 792	36,6
Central Finland	76 761	23,0	63 948	10,9	12 813	171,0
Jyväskylä	38 220	27,8	27 739	6,0	10 481	180,5
South Ostrobothnia	29 541	-17,6	28 266	-18,7	1 275	13,6
Seinäjoki	10 074	-14,5	9 262	-15,2	812	-6,2
Ostrobothnia	23 447	5,0	18 820	2,6	4 627	16,1
Vaasa	17 614	4,0	14 107	2,9	3 507	8,6
Central Ostrobothnia	7 741	-7,1	7 062	-8,1	679	4,1
Kokkola	5 919	-4,2	5 343	-5,1	576	5,9
North Ostrobothnia	84 474	-2,1	74 324	-3,1	10 150	6,0
Oulu	37 191	-1,0	32 089	-4,0	5 102	23,0
Kainuu	56 632	3,4	54 554	3,0	2 078	15,2
Kajaani	5 926	-9,9	5 437	-12,1	489	24,4
Lapland	159 423	-7,9	131 190	-11,6	28 233	14,3
Rovaniemi	19 594	-7,5	12 382	-15,8	7 212	11,5
Åland	9 758	-15,8	3 569	-33,8	6 189	-0,1
Maarianhamina	7 787	-23,6	3 126	-39,5	4 661	-7,3

Appendix table 5. Visitor arrivals and nights spend by country of residence, April 2012

Country of residence	Visitor arrivals in all accommodation establishments	Nights spend in all accommodation establishments	Change of nights spend in all accommodation establishments, %	Nights spend in hotels	Change of nights spend in hotels, %
Total	722 334	1 394 769	-0,2	1 185 880	-0,3
Finland	564 839	1 076 663	-1,7	898 863	-1,6
Foreign countries	157 495	318 106	5,0	287 017	4,0
Sweden	20 205	33 939	-0,6	29 412	-1,1
Germany	11 840	28 060	9,2	26 423	8,6
Russia	44 815	75 651	13,2	66 762	7,4
United Kingdom	8 567	21 627	-1,3	19 320	2,8
United States	4 973	11 645	-9,4	11 194	-11,0
Norway	6 664	15 260	23,9	13 133	30,8
Netherlands	3 707	7 003	-1,8	6 637	-1,0
Italy	2 809	6 724	-9,5	6 367	-10,2
France	4 560	10 371	0,7	9 126	0,9
Japan	2 856	5 204	3,7	4 998	3,2
Estonia	5 648	15 168	19,3	10 826	18,1
Spain	3 431	7 884	-8,3	7 173	-5,9

Appendix table 6. Nights spend in all establishments, 2012

Month	Nights spend, total	Change of nights spend, total, %	Nights spend, residents	Change of nights spend, residents, %	Nights spend, non-residents	Change of nights spend, non-residents, %
Total	5 997 336	4,7	4 181 444	1,5	1 815 892	12,8
January	1 401 532	6,5	785 378	1,0	616 154	14,6
February	1 459 499	8,7	1 028 545	3,7	430 954	22,9
March	1 741 536	4,0	1 290 858	2,9	450 678	7,5
April	1 394 769	-0,2	1 076 663	-1,7	318 106	5,0

Suomen virallinen tilasto
Finlands officiella statistik
Official Statistics of Finland

Transport and Tourism 2012

Inquiries

Marjut Tuominen 09 1734 3556

Kari Keränen 09 1734 3208

Director in charge:

Hannele Orjala

liikenne.matkailu@stat.fi

www.stat.fi

Source: Accommodation Statistics 2012. Statistics Finland