

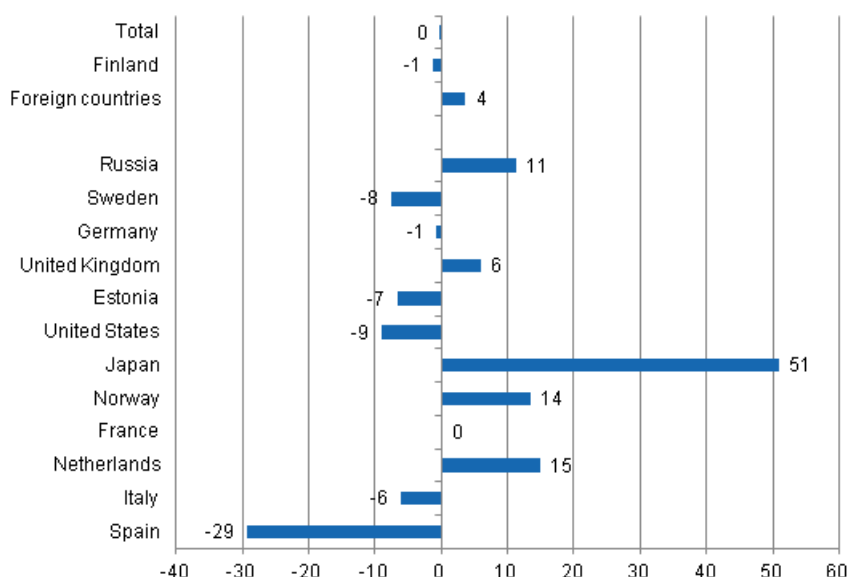
Accommodation statistics

2012, October

Nights spent by foreign tourists in Finland up by 3.6 per cent in October 2012

The number of recorded nights spent by foreign tourists at Finnish accommodation establishments in October 2012 was nearly 325,000, which was 3.6 per cent higher than one year earlier. In contrast, the number of nights spent by resident tourists at accommodation establishments went down by 1.3 per cent and totalled close on 1.1 million in October 2012. The total number of nights spent was nearly the same as one year earlier and a total of 1.4 million overnight stays were recorded at accommodation establishments, which was 0.2 per cent less than in October 2011. These figures are preliminary data from Statistics Finland's statistics on accommodation establishments and they have been collected from accommodation establishments with at least 20 beds or caravan pitches with electricity connection, and youth hostels.

Change in overnight stays in October 2012/2011, %

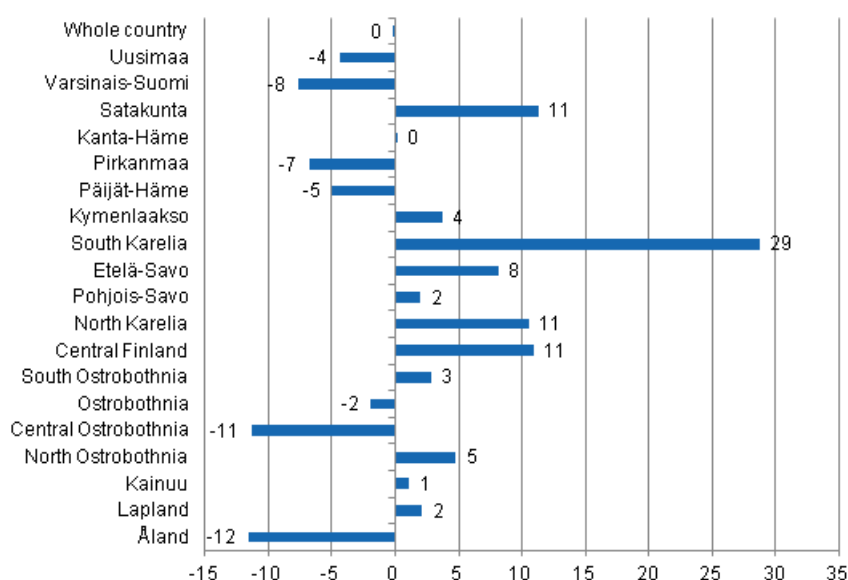


As usual, Russians were the largest group of foreign tourists in October 2012. Nearly 73,000 overnight stays were recorded for them at Finnish accommodation establishments, which was 11.2 per cent more

than one year before. Visitors from Germany and Sweden came next, even though overnight stays for both of them decreased from one year back. Swedish visitors spent 33,000 nights, and the reduction from October 2011 was 7.6 per cent. Good 25,000 nights spent were recorded for German visitors, which was 0.7 per cent fewer than twelve months earlier. By contrast, overnight stays recorded for British visitors increased by 5.9 per cent year-on-year and totalled nearly 18,000. However, the biggest increase was seen among Japanese visitors, 50.9 per cent and they spent good 13,000 nights at Finnish accommodation establishments. Overnight stays by Dutch visitors increased by 15.0 per cent, and those by visitors from Norway by 13.5 per cent. The number of nights spent by Spanish visitors decreased most in October, 29.3 per cent fewer stays were recorded for them than one year previously.

By region, the total number of overnight stays increased most in South Karelia, up by 28.8 per cent in October. In Satakunta, overnight stays grew by 11.3 per cent, in Central Finland by 10.9 per cent and in North Karelia by 10.6 per cent. In Etelä-Savo, 8.1 per cent more overnight stays were recorded than in October 2011. Overnight stays decreased most in Åland, 11.6 per cent down, and in Central Ostrobothnia, 11.3 per cent down. Overnight stays in the whole country dropped by 0.2 per cent from last year.

Change in overnight stays in October by region 2012 / 2011, %



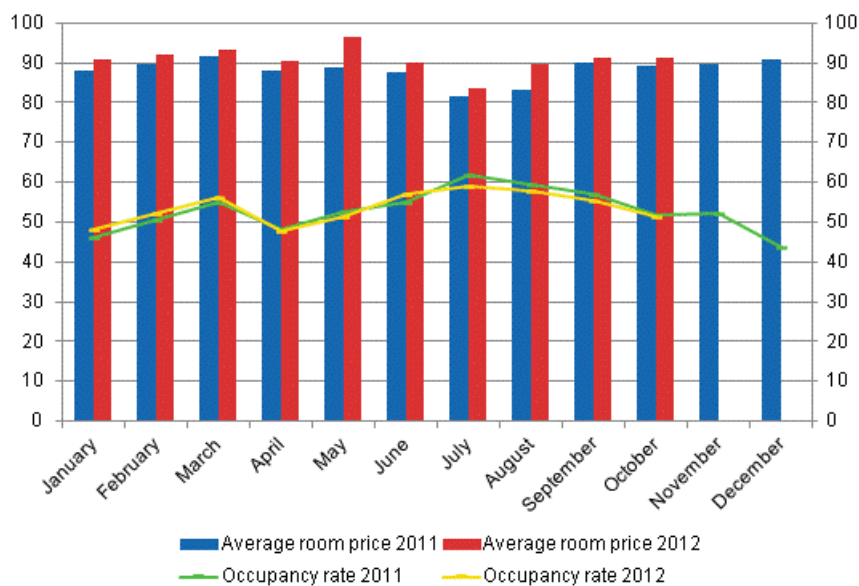
Nights spent in hotels decreased by 0.8 per cent in October 2012

In October 2012, the total number of nights spent in hotels was good 1.2 million, which was 0.8 per cent lower than twelve months earlier. Overnight stays by foreign tourists increased by 1.4 per cent and accommodation establishments recorded a total of nearly 295,000 of them. Recorded nights spent by resident tourists in hotels numbered 945,000. The number was 1.5 per cent lower than in October 2011.

The occupancy rate of hotel rooms was 51.4 per cent in October. One year earlier, it was 51.9 per cent. Among the regions, the highest occupancy rates of hotel rooms were measured in Uusimaa, 65.9 per cent, and South Karelia, 56.8 per cent. In Vantaa, the hotel room occupancy rate was 71.8 per cent and in Lappeenranta 71.1 per cent. Hotel room occupancy rate in Helsinki was 72.3 per cent.

In October, the realised average price of a hotel room was EUR 91.15 per day for the whole country. Twelve months previously it was EUR 89.40.

Hotel room occupancy rate and the monthly average price

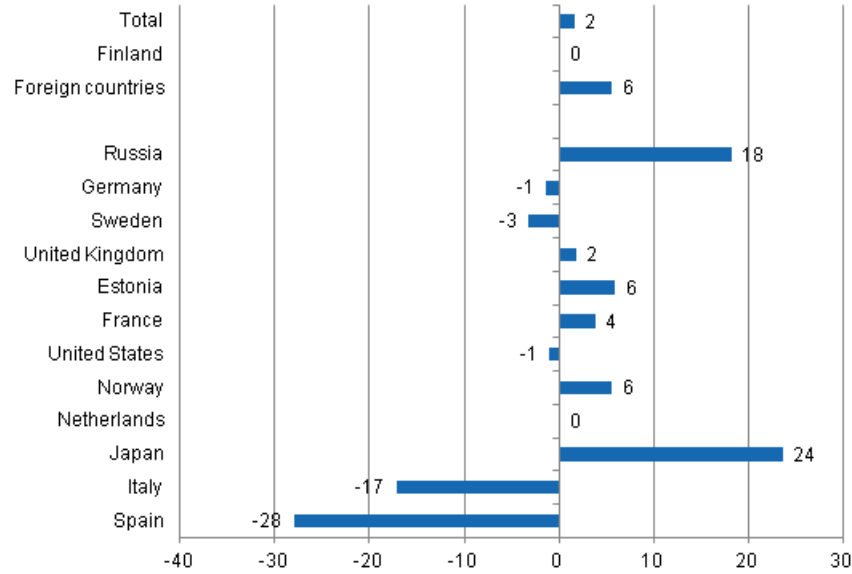


Total number of nights spent at all accommodation establishments went up by 1.6 per cent in the January to October 2012 period

Over the January-October period of 2012, the number of nights spent at accommodation establishments in Finland totalled 17.7 million, which was 1.6 per cent more than in the same period of last year. Overnight stays by foreign tourists went up by 5.6 per cent and accommodation establishments recorded a total of 4.9 million of them. Overnight stays by resident tourists numbered 12.7 million, which was almost the same as in January-October 2011.

Overnight stays recorded at Finnish accommodation establishments for Russian visitors in January-October numbered good 1.2 million, which was 18.3 per cent up on the same period one year earlier. German and Swedish visitors came next. Good 483,000 overnight stays at accommodation establishments were recorded for both of them. The overnight stays of visitors from Sweden decreased by 3.2 per cent and those of visitors from Germany by 1.3 per cent from the previous year's corresponding time period. By contrast, the numbers of overnight stays by visitors from Great Britain increased and was nearly 273,000, which was 1.8 per cent more than in January-October 2011. Estonian visitors spent 200,000 nights, which was 5.9 per cent up on twelve months earlier. The number of nights spent by visitors from France rose to 185,000, which was 3.8 per cent up on January-October 2011. Among the most important countries of inbound tourism into Finland, overnight stays of visitors from Japan increased most, or by 23.6 per cent, and 146,000 overnight stays were recorded for them. The biggest decreases in overnight stays in January-October were seen for visitors from Spain, down by 28.0 per cent, and Italy, down by 17.1 per cent.

Change in overnight stays in January-October 2012/2011, %



Contents

Tables

Appendix tables

Appendix table 1. Capacity and its utilization, October 2012.....6

Appendix table 2. Nights spend in all establishments, October 2012.....7

Appendix table 3. Hotel capacity and capacity utilization, October 2012.....8

Appendix table 4. Nights spend in hotels, October 2012.....9

Appendix table 5. Visitor arrivals and nights spend by country of residence, October 2012.....10

Appendix table 6. Nights spend in all establishments, 2012.....10

Appendix tables

Appendix table 1. Capacity and its utilization, October 2012

Region / municipality	Number of establishments	Number of bedrooms	Occupancy rate of bedrooms %	Change of the occupancy rate compared to previous year, %-units	Average price of nights spend, in euros (incl. VAT 9 %)
Whole country	1 048	57 908	47,3	-0,8	57,14
Mainland Finland	1 007	56 786	47,9	-0,9	57,12
Uusimaa	142	14 672	65,1	-1,6	71,99
Helsinki	59	8 560	72,0	-1,1	77,14
Varsinais-Suomi	65	3 783	45,6	-2,8	49,90
Turku	23	2 211	52,8	-2,0	51,47
Satakunta	39	1 571	41,8	1,9	54,09
Pori	12	840	45,8	4,0	48,03
Kanta-Häme	28	1 434	38,3	-1,0	49,03
Hämeenlinna	11	779	43,4	-2,5	53,95
Pirkanmaa	65	4 465	53,3	-6,6	58,16
Tampere	26	2 955	61,9	-7,8	65,81
Päijät-Häme	29	1 818	41,5	0,1	48,53
Lahti	10	639	48,5	1,8	58,48
Kymenlaakso	23	1 150	39,7	1,5	52,49
Kouvola	9	556	41,0	7,0	47,53
South Karelia	33	1 775	52,5	-1,5	49,06
Lappeenranta	13	925	65,6	-2,0	48,88
Etelä-Savo	65	2 147	35,2	-0,7	41,17
Mikkeli	12	584	46,7	-1,1	47,61
Pohjois-Savo	46	2 609	49,8	-1,9	49,54
Kuopio	16	1 259	60,5	-5,0	58,35
North Karelia	48	1 614	40,2	4,0	46,94
Joensuu	11	750	54,9	9,8	56,17
Central Finland	47	2 964	48,2	2,2	52,34
Jyväskylä	13	1 479	55,1	-5,4	71,40
South Ostrobothnia	41	1 726	45,0	-2,7	40,93
Seinäjoki	9	615	52,6	-2,3	56,78
Ostrobothnia	28	1 256	53,2	4,0	58,83
Vaasa	8	772	59,9	6,4	60,80
Central Ostrobothnia	14	545	42,6	-5,8	54,46
Kokkola	7	388	50,0	-5,8	59,44
North Ostrobothnia	94	4 216	41,6	0,6	47,28
Oulu	12	1 583	63,0	-0,5	59,06
Kainuu	42	2 076	43,3	-0,3	39,47
Kajaani	7	446	38,3	7,7	56,61
Lapland	158	6 965	22,8	0,3	43,95
Rovaniemi	17	1 361	36,0	7,4	42,47
Åland	41	1 122	19,1	-0,0	.
Maarianhamina	9	510	29,8	0,9	.

Appendix table 2. Nights spend in all establishments, October 2012

Region / municipality	Nights spend, total	Change of nights spend, total, %	Nights spend, residents	Change of nights spend, residents, %	Nights spend, non-residents	Change of nights spend, non-residents, %
Whole country	1 395 903	-0,2	1 071 053	-1,3	324 850	3,6
Mainland Finland	1 383 168	-0,1	1 065 411	-1,1	317 757	3,8
Uusimaa	427 185	-4,4	252 466	-3,2	174 719	-6,0
Helsinki	274 210	-5,1	138 181	-5,1	136 029	-5,2
Varsinais-Suomi	88 206	-7,7	73 991	-10,3	14 215	8,4
Turku	57 063	-6,5	46 845	-9,6	10 218	10,9
Satakunta	29 628	11,3	24 518	13,3	5 110	2,4
Pori	17 246	19,4	14 330	13,8	2 916	57,5
Kanta-Häme	29 995	0,1	26 514	-1,7	3 481	16,3
Hämeenlinna	18 128	-5,5	15 619	-8,2	2 509	15,7
Pirkanmaa	121 646	-6,8	104 033	-10,1	17 613	19,5
Tampere	84 572	-1,9	69 290	-6,4	15 282	24,9
Päijät-Häme	43 894	-5,0	38 654	-4,9	5 240	-5,0
Lahti	13 665	-12,9	10 427	-14,0	3 238	-8,9
Kymenlaakso	22 809	3,7	15 564	-9,4	7 245	50,7
Kouvola	11 189	16,3	8 481	0,5	2 708	130,3
South Karelia	52 018	28,8	31 929	42,0	20 089	12,3
Lappeenranta	32 625	80,2	23 350	86,9	9 275	65,4
Etelä-Savo	40 709	8,1	34 040	5,3	6 669	25,0
Mikkeli	13 711	11,0	11 003	3,3	2 708	58,7
Pohjois-Savo	69 311	2,0	63 280	-0,3	6 031	34,1
Kuopio	37 326	12,6	34 233	10,2	3 093	48,8
North Karelia	33 748	10,6	28 890	5,4	4 858	57,4
Joensuu	18 268	22,7	14 575	12,8	3 693	87,7
Central Finland	76 393	10,9	70 198	11,1	6 195	8,7
Jyväskylä	36 540	-2,0	32 272	-2,2	4 268	-1,2
South Ostrobothnia	48 023	2,8	46 052	3,5	1 971	-10,1
Seinäjoki	14 808	-4,4	14 015	-3,5	793	-18,2
Ostrobothnia	30 149	-1,9	25 413	0,1	4 736	-11,2
Vaasa	20 330	-2,4	16 391	-0,4	3 939	-10,1
Central Ostrobothnia	11 304	-11,3	10 159	-13,5	1 145	14,8
Kokkola	8 533	-8,5	7 580	-11,1	953	19,6
North Ostrobothnia	102 510	4,8	87 283	1,8	15 227	26,0
Oulu	48 818	4,9	41 295	3,6	7 523	12,6
Kainuu	75 377	1,1	71 131	0,7	4 246	9,1
Kajaani	7 063	6,4	6 175	1,1	888	66,9
Lapland	80 263	2,1	61 296	-6,3	18 967	44,0
Rovaniemi	25 026	18,2	16 728	11,2	8 298	35,6
Åland	12 735	-11,6	5 642	-18,9	7 093	-4,8
Maarianhamina	7 723	-13,6	4 126	-15,2	3 597	-11,7

Appendix table 3. Hotel capacity and capacity utilization, October 2012

Region / municipality	Number of establishments	Number of bedrooms	Occupancy rate of bedrooms %	Change of the occupancy rate compared to previous year, %-units	Room price, euros (Vat inc. 9 %)	¹⁾ RevPAR, euros (Vat inc. 9 %)
Whole country	624	50 182	51,4	-0,5	91,15	46,83
Mainland Finland	612	49 493	51,7	-0,5	91,13	47,15
Uusimaa	117	14 283	65,9	-1,5	102,73	67,69
Helsinki	53	8 442	72,3	-1,3	108,65	78,54
Varsinais-Suomi	35	3 109	51,0	-1,0	81,11	41,41
Turku	18	2 052	55,3	-0,5	81,97	45,36
Satakunta	25	1 269	47,6	1,9	80,01	38,06
Pori	9	734	48,4	2,5	73,19	35,45
Kanta-Häme	18	1 274	41,1	-1,4	86,04	35,36
Hämeenlinna	8	737	44,4	-3,0	93,00	41,31
Pirkanmaa	43	3 916	55,5	-7,9	96,13	53,34
Tampere	24	2 831	61,0	-8,2	98,86	60,32
Päijät-Häme	16	1 657	43,4	0,5	79,74	34,57
Lahti	7	601	49,1	2,5	83,50	41,04
Kymenlaakso	16	950	44,1	2,6	83,68	36,92
Kouvola	6	435	46,7	7,4	80,38	37,50
South Karelia	19	1 425	56,8	-2,2	90,27	51,30
Lappeenranta	7	712	71,1	-1,6	86,94	61,82
Etelä-Savo	28	1 579	40,5	-0,6	71,12	28,78
Mikkeli	7	513	48,7	-0,8	78,29	38,10
Pohjois-Savo	28	2 273	53,5	-0,1	85,56	45,77
Kuopio	10	1 086	65,3	-1,3	93,04	60,78
North Karelia	24	1 303	46,4	6,9	78,69	36,54
Joensuu	9	719	55,6	10,2	78,47	43,67
Central Finland	28	2 632	51,4	2,6	89,83	46,18
Jyväskylä	10	1 376	57,3	-7,3	104,30	59,73
South Ostrobothnia	26	1 482	51,1	-2,3	73,97	37,81
Seinäjoki	8	615	52,6	-2,3	79,41	41,75
Ostrobothnia	22	1 192	55,2	4,2	84,74	46,73
Vaasa	8	772	59,9	6,4	86,29	51,65
Central Ostrobothnia	10	498	43,9	-7,2	81,03	35,61
Kokkola	5	360	51,1	-5,4	84,25	43,01
North Ostrobothnia	49	3 408	44,8	0,9	83,62	37,49
Oulu	11	1 555	63,1	-0,4	89,53	56,47
Kainuu	23	1 673	50,3	-0,1	73,84	37,12
Kajaani	6	399	41,9	8,5	76,32	31,97
Lapland	85	5 570	25,4	0,9	74,24	18,86
Rovaniemi	12	1 224	37,5	8,3	70,66	26,50
Åland	12	689	25,3	-1,0	.	.
Maarianhamina	6	447	33,1	-1,1	.	.

1) RevPar = Average accommodation sales revenue per available room. Calculation formula. RevPar = Average room price * Occupancy rate.

Appendix table 4. Nights spend in hotels, October 2012

Region / municipality	Nights spend, total	Change of nights spend, total, %	Nights spend, residents	Change of nights spend, residents, %	Nights spend, non-residents	Change of nights spend, non-residents, %
Whole country	1 240 072	-0,8	945 318	-1,5	294 754	1,4
Mainland Finland	1 231 550	-0,7	941 026	-1,5	290 524	1,7
Uusimaa	410 988	-4,1	241 638	-3,5	169 350	-4,9
Helsinki	262 888	-4,6	131 890	-5,0	130 998	-4,1
Varsinais-Suomi	78 551	-6,3	66 225	-8,3	12 326	6,1
Turku	55 240	-6,5	45 825	-9,5	9 415	11,3
Satakunta	26 178	14,1	21 730	19,2	4 448	-5,5
Pori	15 481	20,6	13 189	18,8	2 292	31,9
Kanta-Häme	26 748	-0,4	23 272	-3,3	3 476	23,6
Hämeenlinna	16 741	-6,7	14 232	-9,8	2 509	15,7
Pirkanmaa	107 140	-5,3	91 480	-9,1	15 660	25,6
Tampere	79 565	-0,1	65 123	-4,9	14 442	29,8
Päijät-Häme	38 829	-5,6	34 180	-5,4	4 649	-6,9
Lahti	12 928	-14,4	10 014	-14,6	2 914	-13,6
Kymenlaakso	18 822	5,7	12 277	-7,7	6 545	45,1
Kouvola	8 955	16,8	6 511	0,0	2 444	111,6
South Karelia	46 165	18,8	27 469	29,1	18 696	6,3
Lappeenranta	27 927	58,3	19 853	63,4	8 074	47,0
Etelä-Savo	31 249	0,0	27 544	1,5	3 705	-9,5
Mikkeli	11 952	5,5	9 982	0,3	1 970	43,5
Pohjois-Savo	62 142	0,4	57 648	-0,9	4 494	21,3
Kuopio	33 800	12,6	31 290	11,5	2 510	29,6
North Karelia	28 969	7,9	24 667	1,8	4 302	64,6
Joensuu	17 165	15,9	13 708	6,6	3 457	77,6
Central Finland	70 194	11,8	64 291	12,0	5 903	9,6
Jyväskylä	35 614	-2,1	31 383	-2,6	4 231	2,5
South Ostrobothnia	41 596	1,3	39 660	0,6	1 936	16,6
Seinäjoki	14 020	-2,7	13 227	-1,5	793	-18,2
Ostrobothnia	28 829	-1,2	24 093	1,0	4 736	-11,2
Vaasa	20 330	-2,4	16 391	-0,4	3 939	-10,1
Central Ostrobothnia	9 784	-9,5	8 722	-12,6	1 062	27,5
Kokkola	7 821	-6,8	6 951	-10,4	870	36,8
North Ostrobothnia	75 944	-0,5	66 772	0,6	9 172	-8,0
Oulu	45 845	6,8	38 841	4,6	7 004	20,8
Kainuu	63 554	0,4	59 678	-0,3	3 876	13,1
Kajaani	6 873	4,9	5 985	-0,6	888	66,9
Lapland	65 868	2,6	49 680	-5,1	16 188	36,6
Rovaniemi	22 623	23,2	15 102	19,3	7 521	31,9
Åland	8 522	-14,8	4 292	-16,1	4 230	-13,4
Maarianhamina	7 397	-12,5	4 030	-14,7	3 367	-9,6

Appendix table 5. Visitor arrivals and nights spend by country of residence, October 2012

Country of residence	Visitor arrivals in all accommodation establishments	Nights spend in all accommodation establishments	Change of nights spend in all accommodation establishments, %	Nights spend in hotels	Change of nights spend in hotels, %
Total	789 915	1 395 903	-0,2	1 240 072	-0,8
Finland	619 174	1 071 053	-1,3	945 318	-1,5
Foreign countries	170 741	324 850	3,6	294 754	1,4
Sweden	21 312	33 171	-7,6	30 976	-8,0
Germany	11 912	25 357	-0,7	23 889	0,9
Russia	43 905	72 610	11,2	62 025	2,6
United Kingdom	8 833	17 757	5,9	17 509	6,9
United States	6 610	13 589	-9,1	13 097	-10,7
Norway	6 175	10 825	13,5	10 203	12,6
Netherlands	3 948	7 533	15,0	7 271	16,8
Italy	2 891	6 781	-6,2	6 313	-6,8
France	3 745	8 620	-0,0	7 491	-6,6
Japan	6 942	13 433	50,9	12 880	48,4
Estonia	6 802	16 442	-6,7	12 948	2,0
Spain	2 036	4 523	-29,3	4 114	-30,3

Appendix table 6. Nights spend in all establishments, 2012

Month	Nights spend, total	Change of nights spend, total, %	Nights spend, residents	Change of nights spend, residents, %	Nights spend, non-residents	Change of nights spend, non-residents, %
Total	17 667 339	1,6	12 738 787	0,1	4 928 552	5,6
January	1 402 721	6,6	785 707	1,0	617 014	14,7
February	1 459 084	8,7	1 027 798	3,6	431 286	23,0
March	1 738 876	3,9	1 289 485	2,8	449 391	7,2
April	1 394 717	-0,2	1 076 235	-1,7	318 482	5,1
May	1 341 275	0,9	952 766	-1,4	388 509	7,0
June	2 132 668	5,0	1 575 280	4,7	557 388	6,2
July	3 025 712	-3,5	2 293 552	-4,2	732 160	-1,4
August	2 218 437	0,8	1 513 644	1,6	704 793	-1,0
September	1 557 946	-0,8	1 153 267	-1,5	404 679	1,2
October	1 395 903	-0,2	1 071 053	-1,3	324 850	3,6

Suomen virallinen tilasto
Finlands officiella statistik
Official Statistics of Finland

Transport and Tourism 2012

Inquiries

Marjut Tuominen 09 1734 3556

Merja Rönkä 09 1734 3209

Director in charge:

Hannele Orjala

liikenne.matkailu@stat.fi

www.stat.fi

Source: Accommodation Statistics. Statistics Finland