

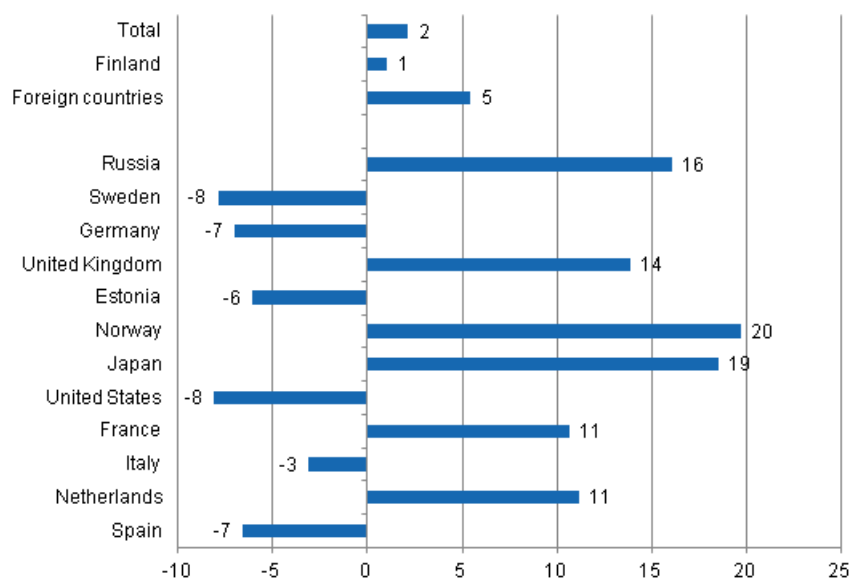
# Accommodation statistics

2012, November

## Nights spent by foreign tourists in Finland up by 5.4 per cent in November 2012

The number of recorded nights spent by foreign tourists at Finnish accommodation establishments in November 2012 was nearly 357,000, which was 5.4 per cent more than in November 2011. The number of nights spent by resident tourists went up by one per cent and totalled 956,000 in November 2012. The total number of overnight stays increased by 2.1 per cent from the year before. Accommodation establishments recorded a total of 1.3 million of them in November 2012. These figures are preliminary data from Statistics Finland's statistics on accommodation establishments and they have been collected from accommodation establishments with at least 20 beds, or caravan pitches with electricity connection, and youth hostels.

### Change in overnight stays in November 2012/2011, %

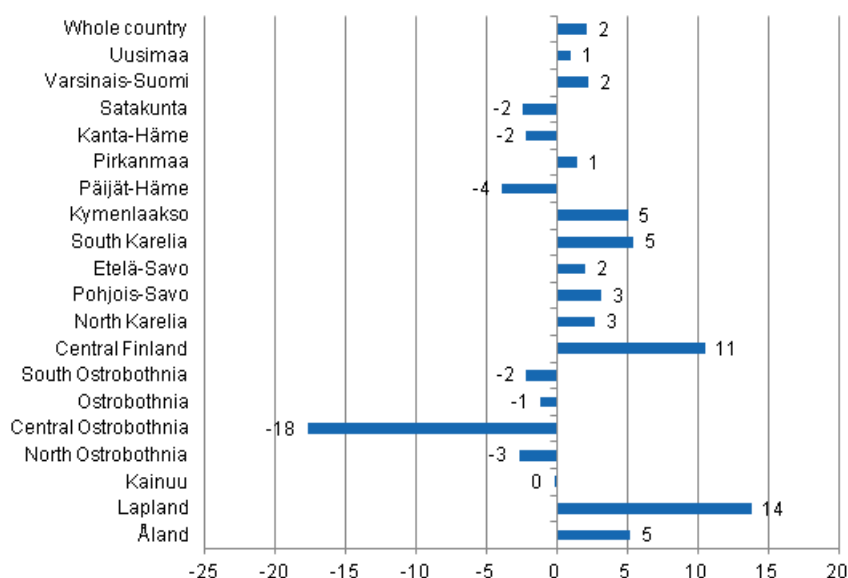


Russians were by far the largest group of foreign tourists in November 2012. Finnish accommodation establishments recorded 112,000 overnight stays for them, which was 16.1 per cent more than one year before. Visitors from Sweden and Germany came next, even though overnight stays for both groups

decreased from one year back. Swedish visitors spent good 30,000 nights, and the reduction from November 2011 was 7.9 per cent. Nearly 25,000 nights spent were recorded for German visitors, which was 7.0 per cent fewer than twelve months earlier. By contrast, overnight stays recorded for British visitors increased by 13.9 per cent year-on-year and totalled good 20,000. The biggest increase was seen among Norwegian visitors, 19.7 per cent and they spent nearly 14,000 nights at Finnish accommodation establishments. Overnight stays by Japanese tourists increased by 18.5 per cent and those by Dutch and French tourists both by 11 per cent each. By contrast, overnight stays recorded for American visitors decreased by 8.1 per cent and those by Spanish and Estonian visitors fell by six to seven per cent compared to November 2011.

By region, the total number of overnight stays increased most in November 2012 in Lapland, up by 13.8 per cent. In Central Finland, overnight stays grew by 10.5 per cent, in South Karelia by 5.4 per cent and in Åland by 5.2 per cent. In Kymenlaakso, overnight stays went up by 5.0 per cent. Nights spent decreased most in Central Ostrobothnia, 17.7 per cent down, and in Päijät-Häme, 3.9 per cent down. Overnight stays in the whole country increased by 2.1 per cent from last year.

### Change in overnight stays in November by region 2012 / 2011, %



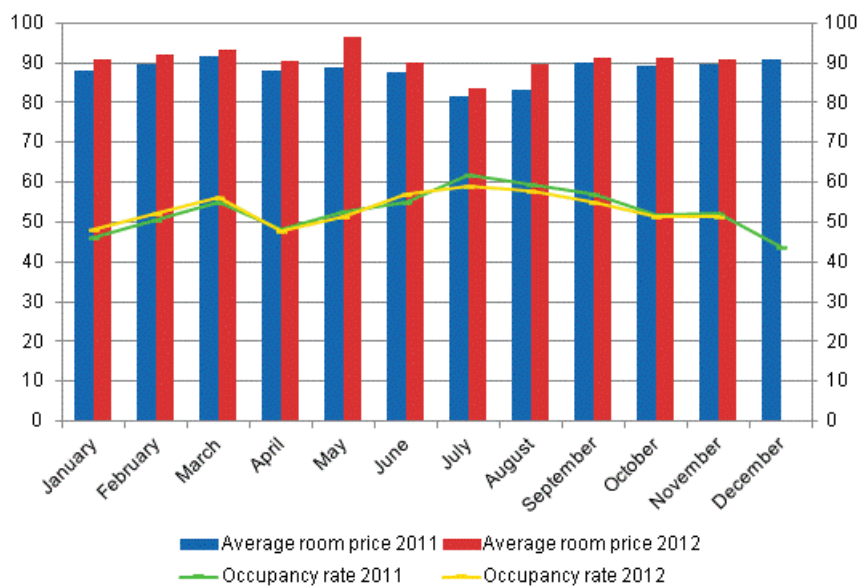
### Overnight stays in hotels increased by 1.6 per cent in November 2012

In November 2012, the total number of nights spent in hotels was almost 1.2 million, which was 1.6 per cent higher than twelve months earlier. Overnight stays by foreign tourists increased by 3.4 per cent and accommodation establishments recorded a total of nearly 316,000 of them. Recorded nights spent by resident tourists in hotels numbered 865,000. This was one per cent up from November 2011.

The occupancy rate of hotel rooms was 51.4 per cent in November. One year earlier, it was 52.2 per cent. Among the regions, the highest occupancy rates of hotel rooms were measured in Uusimaa, 65.1 per cent, and South Karelia, 61.1 per cent. In Vantaa, the hotel room occupancy rate was 72.3 per cent and in Lappeenranta 71.9 per cent. Hotel room occupancy rate in Helsinki was 70.6 per cent.

In November, the realised average price of a hotel room was EUR 91.04 per day for the whole country. Twelve months previously it was EUR 89.48.

### Hotel room occupancy rate and the monthly average price

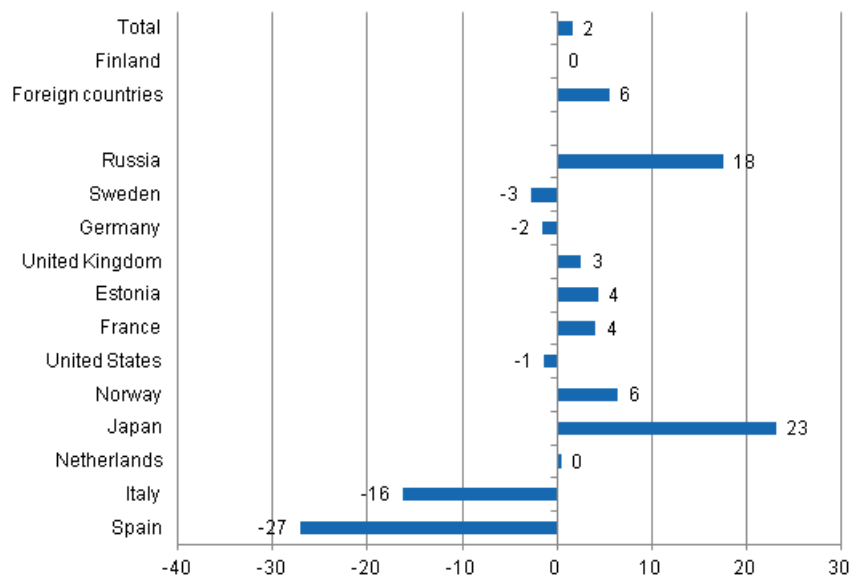


### *Total number of nights spent at all accommodation establishments went up by 1.6 per cent in the January to November 2012 period*

Over the January-November period of 2012, the number of nights spent at accommodation establishments in Finland totalled 19 million, which was 1.6 per cent more than in the same period of last year. Overnight stays by foreign tourists went up by 5.5 per cent and accommodation establishments recorded a total of nearly 5.3 million of them. Overnight stays by resident tourists numbered 13.7 million, which was almost the same as in January-November 2011.

Overnight stays recorded at Finnish accommodation establishments for Russian visitors in January-November 2012 numbered good 1.3 million, which was 17.6 per cent up on the same period one year earlier. German and Swedish visitors came next. Good 517,000 overnight stays were recorded for Swedish visitors and nearly 508,000 for German visitors. The overnight stays of visitors from Sweden decreased by 2.8 per cent and those of visitors from Germany by 1.6 per cent from the previous year's corresponding time period. By contrast, the numbers of overnight stays by visitors from Great Britain increased and was nearly 293,000, which was 2.5 per cent more than in January-November 2011. Estonian visitors spent 217,000 nights, which was 4.3 per cent up on twelve months earlier. The number of nights spent by visitors from France rose to 195,000, which was 4.1 per cent up on January-November 2011. Among the most important countries of inbound tourism into Finland, overnight stays of visitors from Japan increased most, or by 23.1 per cent, and 159,000 overnight stays were recorded for them. The biggest decreases in overnight stays in January-November was seen for visitors from Spain, down by 27.1 per cent, and Italy, down by 16.3 per cent.

### Change in overnight stays in January-November 2012/2011, %



# Contents

## Tables

### Appendix tables

Appendix table 1. Capacity and its utilization, November 2012.....	6
Appendix table 2. Nights spend in all establishments, November 2012.....	7
Appendix table 3. Hotel capacity and capacity utilization, November 2012.....	8
Appendix table 4. Nights spend in hotels, November 2012.....	9
Appendix table 5. Visitor arrivals and nights spend by country of residence, November 2012.....	10
Appendix table 6. Nights spend in all establishments, 2012.....	10

## Appendix tables

**Appendix table 1. Capacity and its utilization, November 2012**

Region / municipality	Number of establishments	Number of bedrooms	Occupancy rate of bedrooms %	Change of the occupancy rate compared to previous year, %-units	Average price of nights spend, in euros (incl. VAT 9 %)
Whole country	1 036	57 868	47,6	-1,2	58,57
Mainland Finland	1 010	57 013	48,0	-1,2	58,57
Uusimaa	141	14 697	64,3	-1,5	74,12
Helsinki	59	8 593	70,2	-0,6	77,68
Varsinais-Suomi	61	3 693	49,6	2,1	52,39
Turku	23	2 210	56,9	3,1	53,94
Satakunta	37	1 522	37,6	-3,1	58,02
Pori	12	837	40,9	-3,4	51,71
Kanta-Häme	29	1 441	39,0	-2,8	53,98
Hämeenlinna	12	786	41,9	-3,8	62,36
Pirkanmaa	66	4 387	51,6	-6,1	59,30
Tampere	26	2 876	62,1	-7,2	64,59
Päijät-Häme	32	1 909	40,2	-2,7	50,53
Lahti	10	639	53,4	-0,0	60,44
Kymenlaakso	24	1 159	40,3	-1,7	52,53
Kouvola	9	556	41,2	-2,9	51,47
South Karelia	33	1 675	54,4	-1,4	49,26
Lappeenranta	13	925	63,6	0,8	48,94
Etelä-Savo	68	2 067	36,7	-0,9	43,67
Mikkeli	13	585	51,6	-5,0	47,91
Pohjois-Savo	45	2 566	46,1	-3,6	51,90
Kuopio	16	1 267	54,5	-9,9	58,18
North Karelia	49	1 578	40,0	1,0	49,12
Joensuu	11	745	54,5	2,4	55,93
Central Finland	46	2 993	45,7	2,4	54,55
Jyväskylä	13	1 479	56,2	-0,9	68,42
South Ostrobothnia	42	1 762	42,3	-3,6	44,09
Seinäjoki	9	615	52,6	0,2	57,79
Ostrobothnia	28	1 253	52,0	0,9	63,32
Vaasa	8	771	60,8	2,5	65,01
Central Ostrobothnia	14	557	38,3	-8,8	57,04
Kokkola	7	400	43,2	-11,7	60,52
North Ostrobothnia	94	4 237	42,7	-3,0	48,69
Oulu	12	1 583	60,2	-5,6	61,73
Kainuu	39	2 139	37,3	-2,3	40,53
Kajaani	7	448	39,4	8,3	54,52
Lapland	162	7 378	31,2	2,5	42,86
Rovaniemi	17	1 373	46,1	2,3	42,70
Åland	26	855	21,0	1,1	.
Maarianhamina	8	465	31,8	0,6	.

**Appendix table 2. Nights spend in all establishments, November 2012**

Region / municipality	Nights spend, total	Change of nights spend, total, %	Nights spend, residents	Change of nights spend, residents, %	Nights spend, non-residents	Change of nights spend, non-residents, %
Whole country	1 312 335	2,1	955 721	1,0	356 614	5,4
Mainland Finland	1 303 151	2,1	951 430	0,8	351 721	5,8
Uusimaa	402 200	1,0	242 992	2,6	159 208	-1,4
Helsinki	259 519	1,7	142 350	3,9	117 169	-0,8
Varsinais-Suomi	84 260	2,2	70 740	0,3	13 520	12,9
Turku	56 312	4,3	45 384	-0,7	10 928	31,6
Satakunta	22 961	-2,4	18 273	-2,8	4 688	-1,1
Pori	13 852	7,3	11 820	8,0	2 032	3,1
Kanta-Häme	27 579	-2,2	24 316	-1,0	3 263	-10,0
Hämeenlinna	15 024	-7,8	12 685	-5,9	2 339	-16,9
Pirkanmaa	107 887	1,4	93 211	0,9	14 676	4,9
Tampere	80 010	8,6	67 317	8,0	12 693	11,6
Päijät-Häme	40 905	-3,9	34 640	-4,3	6 265	-1,3
Lahti	14 729	-11,4	10 734	-16,2	3 995	4,7
Kymenlaakso	22 562	5,0	15 818	1,8	6 744	13,1
Kouvola	10 381	-6,0	8 261	-7,9	2 120	2,2
South Karelia	51 263	5,4	24 167	-2,8	27 096	14,1
Lappeenranta	31 964	17,7	17 849	1,1	14 115	48,6
Etelä-Savo	37 611	2,0	29 737	-3,1	7 874	27,4
Mikkeli	14 583	4,2	11 271	-5,2	3 312	57,3
Pohjois-Savo	57 272	3,1	52 344	3,3	4 928	1,0
Kuopio	32 293	9,6	29 394	9,5	2 899	10,4
North Karelia	28 687	2,7	23 165	-3,8	5 522	43,3
Joensuu	17 884	10,0	13 976	3,8	3 908	39,9
Central Finland	65 288	10,5	58 750	8,6	6 538	31,6
Jyväskylä	35 722	11,0	30 569	6,4	5 153	48,8
South Ostrobothnia	38 936	-2,2	37 449	-2,2	1 487	-0,2
Seinäjoki	13 976	-1,1	13 173	-2,9	803	42,4
Ostrobothnia	26 689	-1,2	22 161	5,3	4 528	-24,1
Vaasa	18 572	-1,7	14 925	6,0	3 647	-24,2
Central Ostrobothnia	9 467	-17,7	8 870	-18,1	597	-10,6
Kokkola	7 242	-18,5	6 718	-20,0	524	8,3
North Ostrobothnia	98 791	-2,7	76 149	-2,2	22 642	-4,4
Oulu	42 398	0,3	35 852	0,4	6 546	-0,1
Kainuu	54 428	-0,2	49 347	2,2	5 081	-18,2
Kajaani	7 473	24,6	6 903	27,7	570	-3,9
Lapland	126 365	13,8	69 301	1,6	57 064	33,4
Rovaniemi	33 701	1,4	19 058	-3,2	14 643	8,2
Åland	9 184	5,2	4 291	43,1	4 893	-14,7
Maarianhamina	7 082	27,8	3 848	69,0	3 234	-0,9

**Appendix table 3. Hotel capacity and capacity utilization, November 2012**

Region / municipality	Number of establishments	Number of bedrooms	Occupancy rate of bedrooms %	Change of the occupancy rate compared to previous year, %-units	Room price, euros (Vat inc. 9 %)	<sup>1)</sup> RevPAR, euros (Vat inc. 9 %)
Whole country	624	50 612	51,4	-0,8	91,04	46,83
Mainland Finland	613	49 973	51,8	-0,8	91,04	47,13
Uusimaa	117	14 322	65,1	-1,4	104,59	68,08
Helsinki	53	8 475	70,6	-0,9	109,52	77,27
Varsinais-Suomi	35	3 098	54,2	3,8	81,27	44,08
Turku	18	2 051	59,5	4,9	81,97	48,75
Satakunta	25	1 255	41,9	-5,8	80,42	33,73
Pori	9	734	42,6	-6,7	74,10	31,55
Kanta-Häme	18	1 274	41,6	-3,6	84,85	35,27
Hämeenlinna	8	737	42,9	-4,4	93,23	39,96
Pirkanmaa	43	3 845	54,0	-8,1	93,47	50,49
Tampere	24	2 752	61,4	-8,3	96,85	59,51
Päijät-Häme	17	1 739	41,9	-2,9	83,00	34,78
Lahti	7	601	52,6	-0,7	90,82	47,75
Kymenlaakso	16	950	46,1	-0,1	84,37	38,92
Kouvola	6	435	49,7	-3,1	80,85	40,22
South Karelia	17	1 342	61,1	-1,4	92,23	56,39
Lappeenranta	7	712	71,9	1,8	86,72	62,36
Etelä-Savo	28	1 571	42,4	-1,1	70,76	29,98
Mikkeli	7	506	54,5	-4,7	78,66	42,91
Pohjois-Savo	27	2 255	49,4	-2,2	82,08	40,52
Kuopio	10	1 094	58,8	-6,6	89,19	52,47
North Karelia	24	1 315	45,3	2,3	75,78	34,34
Joensuu	9	714	55,3	2,8	78,30	43,31
Central Finland	28	2 670	49,5	2,6	86,62	42,86
Jyväskylä	10	1 376	59,2	-2,0	97,01	57,46
South Ostrobothnia	26	1 512	48,4	-3,5	72,14	34,92
Seinäjoki	8	615	52,6	0,2	79,46	41,77
Ostrobothnia	22	1 189	53,7	0,7	84,73	45,54
Vaasa	8	771	60,8	2,5	85,85	52,20
Central Ostrobothnia	10	510	40,1	-9,0	80,86	32,42
Kokkola	5	372	44,5	-11,6	85,11	37,85
North Ostrobothnia	48	3 420	47,3	-1,4	84,44	39,92
Oulu	11	1 555	60,2	-5,7	88,02	53,02
Kainuu	22	1 761	43,4	-3,3	72,35	31,39
Kajaani	6	401	43,6	10,2	77,00	33,57
Lapland	90	5 945	34,2	4,2	76,87	26,28
Rovaniemi	12	1 236	47,3	2,8	74,74	35,36
Åland	11	639	25,3	1,4	.	.
Maarianhamina	6	417	34,5	-1,5	.	.

1) RevPar = Average accommodation sales revenue per available room. Calculation formula. RevPar = Average room price \* Occupancy rate.



**Appendix table 4. Nights spend in hotels, November 2012**

Region / municipality	Nights spend, total	Change of nights spend, total, %	Nights spend, residents	Change of nights spend, residents, %	Nights spend, non-residents	Change of nights spend, non-residents, %
Whole country	1 180 618	1,6	864 805	1,0	315 813	3,4
Mainland Finland	1 172 897	1,5	860 880	0,8	312 017	3,4
Uusimaa	389 443	1,5	235 249	3,1	154 194	-0,7
Helsinki	249 743	2,2	137 210	4,4	112 533	-0,3
Varsinais-Suomi	75 955	2,5	63 730	1,0	12 225	11,2
Turku	54 336	3,0	44 318	-1,2	10 018	27,1
Satakunta	20 811	-1,8	16 771	0,5	4 040	-10,2
Pori	12 581	8,6	11 054	13,0	1 527	-15,0
Kanta-Häme	24 488	-4,9	21 526	-2,9	2 962	-17,3
Hämeenlinna	13 978	-10,7	11 781	-8,3	2 197	-21,7
Pirkanmaa	95 086	2,7	81 532	1,5	13 554	10,5
Tampere	75 361	10,1	63 262	9,4	12 099	14,0
Päijät-Häme	36 801	-6,0	31 168	-6,5	5 633	-3,2
Lahti	13 772	-13,8	10 052	-19,0	3 720	4,0
Kymenlaakso	19 348	2,7	13 146	-2,5	6 202	15,6
Kouvola	9 020	-3,6	6 992	-7,3	2 028	11,4
South Karelia	45 882	-0,9	21 901	-4,6	23 981	2,7
Lappeenranta	27 228	7,5	16 167	-0,1	11 061	20,8
Etelä-Savo	30 510	-3,1	25 765	-4,2	4 745	3,3
Mikkeli	12 845	-2,3	10 389	-7,2	2 456	25,1
Pohjois-Savo	52 140	1,1	48 606	2,3	3 534	-12,7
Kuopio	28 884	7,9	26 898	9,8	1 986	-13,0
North Karelia	25 512	-2,2	20 930	-7,0	4 582	27,3
Joensuu	16 741	3,5	13 239	-1,1	3 502	25,5
Central Finland	61 229	9,4	54 860	7,3	6 369	30,7
Jyväskylä	34 582	10,6	29 538	6,2	5 044	45,9
South Ostrobothnia	35 517	-1,4	34 124	-1,2	1 393	-5,1
Seinäjoki	13 336	-0,8	12 533	-2,7	803	42,4
Ostrobothnia	25 442	-1,9	20 914	4,7	4 528	-24,1
Vaasa	18 572	-1,7	14 925	6,0	3 647	-24,2
Central Ostrobothnia	8 361	-18,6	7 791	-19,5	570	-5,3
Kokkola	6 683	-18,4	6 171	-20,6	512	21,9
North Ostrobothnia	77 970	0,1	61 396	0,3	16 574	-0,8
Oulu	39 761	0,5	34 046	1,1	5 715	-2,7
Kainuu	50 812	2,4	45 875	4,9	4 937	-15,8
Kajaani	7 402	26,8	6 832	30,3	570	-3,9
Lapland	97 590	9,4	55 596	-1,4	41 994	28,0
Rovaniemi	29 700	2,9	17 183	0,8	12 517	5,8
Åland	7 721	31,4	3 925	69,5	3 796	6,6
Maarianhamina	6 868	34,0	3 722	78,9	3 146	3,3

**Appendix table 5. Visitor arrivals and nights spend by country of residence, November 2012**

Country of residence	Visitor arrivals in all accommodation establishments	Nights spend in all accommodation establishments	Change of nights spend in all accommodation establishments, %	Nights spend in hotels	Change of nights spend in hotels, %
Total	762 372	1 312 335	2,1	1 180 618	1,6
Finland	587 139	955 721	1,0	864 805	1,0
Foreign countries	175 233	356 614	5,4	315 813	3,4
Sweden	19 608	30 387	-7,9	29 132	-1,5
Germany	11 086	24 727	-7,0	23 462	-6,3
Russia	58 492	112 210	16,1	91 923	6,5
United Kingdom	10 407	20 389	13,9	19 804	13,4
United States	4 722	10 105	-8,1	9 803	-5,5
Norway	7 220	13 837	19,7	12 209	16,7
Netherlands	3 596	6 840	11,2	6 449	8,6
Italy	3 448	8 057	-3,1	7 542	-4,3
France	3 826	9 057	10,7	8 139	10,9
Japan	5 696	12 788	18,5	12 111	23,3
Estonia	6 819	18 630	-6,1	11 752	-3,8
Spain	1 959	4 502	-6,6	4 109	-4,6

**Appendix table 6. Nights spend in all establishments, 2012**

Month	Nights spend, total	Change of nights spend, total, %	Nights spend, residents	Change of nights spend, residents, %	Nights spend, non-residents	Change of nights spend, non-residents, %
Total	18 975 526	1,6	13 693 738	0,1	5 281 788	5,5
January	1 403 065	6,7	785 587	1,0	617 478	14,8
February	1 459 576	8,7	1 027 466	3,6	432 110	23,3
March	1 739 818	3,9	1 289 378	2,8	450 440	7,4
April	1 395 919	-0,1	1 076 655	-1,7	319 264	5,4
May	1 340 334	0,8	952 302	-1,4	388 032	6,8
June	2 131 092	5,0	1 576 157	4,7	554 935	5,7
July	3 025 290	-3,6	2 293 627	-4,2	731 663	-1,4
August	2 216 627	0,7	1 513 371	1,6	703 256	-1,2
September	1 555 952	-0,9	1 152 691	-1,5	403 261	0,9
October	1 395 518	-0,2	1 070 783	-1,3	324 735	3,5
November	1 312 335	2,1	955 721	1,0	356 614	5,4

---

Suomen virallinen tilasto  
Finlands officiella statistik  
Official Statistics of Finland

Transport and Tourism 2013

### Inquiries

Marjut Tuominen 09 1734 3556

Merja Rönkä 09 1734 3209

Director in charge:

Hannele Orjala

[liikenne.matkailu@stat.fi](mailto:liikenne.matkailu@stat.fi)

[www.stat.fi](http://www.stat.fi)

Source: Accommodation Statistics. Statistics Finland