

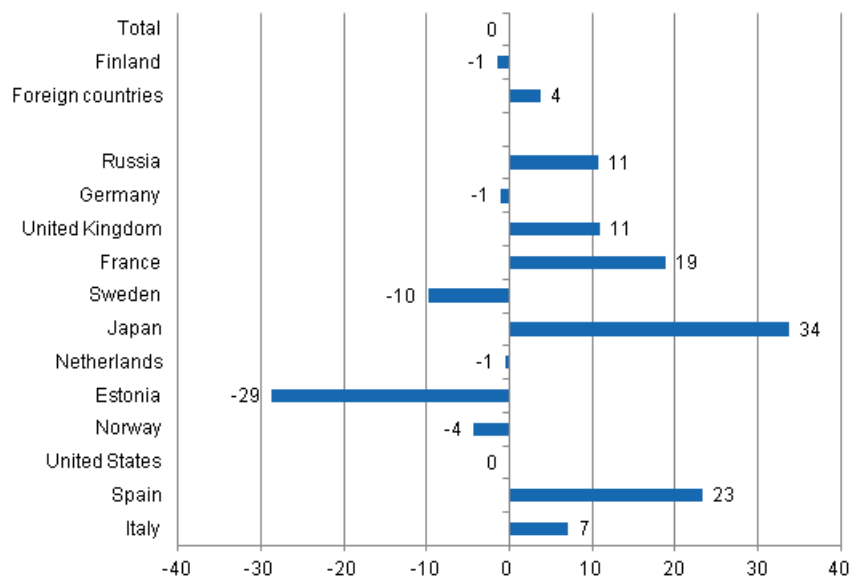
Accommodation statistics

2013, March

Nights spent by foreign tourists in Finland up by 3.7 per cent in March 2013

The number of recorded nights spent by foreign tourists at Finnish accommodation establishments in March 2013 was 467,000, which is 3.7 per cent more than in March 2012. The number of nights spent by resident tourists went down by 1.4 per cent and totalled nearly 1.3 million overnight stays. The total number of nights spent remained on level with the previous year and altogether good 1.7 million overnight stays were recorded at accommodation establishments in March 2013. These figures are preliminary data from Statistics Finland's statistics on accommodation establishments and they have been collected from accommodation establishments with at least 20 beds or caravan pitches with electricity connection, and youth hostels.

Change in overnight stays in March 2013/2012, %

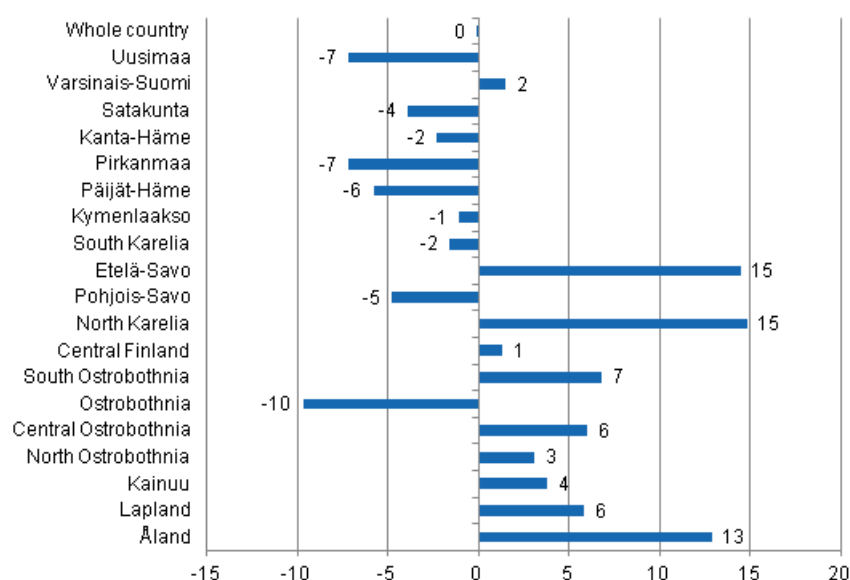


Russians were by far the largest group of foreign tourists in March 2013. Nearly 127,000 overnight stays were recorded for them at Finnish accommodation establishments, which was 10.8 per cent more than one year before. Germans were the second largest visitor group with 43,000 overnight stays, even though

this was one per cent less than in March 2012. Overnight stays by British visitors have increased heavily during the first months of the year and they came third with 35,000 overnight stays. The number of nights recorded for them at Finnish accommodation establishments in March was 10.9 per cent higher than one year earlier. The number of nights spent by French tourists went up by 18.8 per cent from March 2012 and totalled 32,000. By contrast, overnight stays recorded for Swedish visitors decreased by 9.8 per cent and totalled 29,000. Largest growth was seen in overnight stays by Japanese visitors, 33.8 per cent and by Spanish visitors, 23.3 per cent. By contrast, among other major tourist countries the amount of overnight stays by Estonian tourists decreased most. Overnight stays recorded for them at accommodation establishments numbered 17,000, which was 28.7 per cent less than in March 2012.

By region, the total number of overnight stays increased most in the regions of North Karelia, up by 14.8 per cent, and Etelä-Savo, up by 14.5 per cent. Overnight stays increased by 12.9 per cent in Åland and by 6.8 per cent in South Ostrobothnia. Overnight stays decreased most in Ostrobothnia, by 9.7 per cent. The number of nights spent in Pirkanmaa and Uusimaa fell by 7.2 per cent in both regions. Overnight stays in the whole country remained nearly on level with March 2012.

Change in overnight stays in March by region 2013 / 2012, %



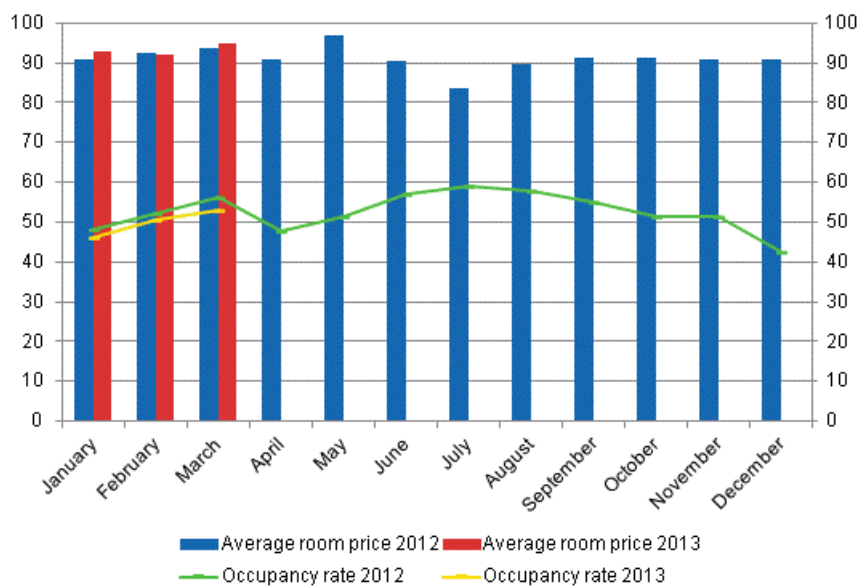
Nights spent in hotels decreased by 2 per cent in March 2013

In March 2013, the total number of nights spent in hotels was good 1.4 million, which was 2 per cent fewer than twelve months earlier. Recorded nights spent by resident tourists in hotels numbered one million. The number was 3.5 per cent lower than in March 2012. By contrast, overnight stays by foreign tourists increased by 2 per cent and accommodation establishments recorded a total of good 409,000 of them.

The occupancy rate of hotel rooms was 52.8 per cent in March. One year earlier, it was 56.3 per cent. Examined by region, the highest hotel room occupancy rates were recorded in Lapland, 69.3 per cent, and Kainuu, 62.2 per cent. In Kittilä, the hotel room occupancy rate was 83.4 per cent and in Sotkamo 78.9 per cent. Hotel room occupancy rate in Helsinki was 59.7 per cent.

In March 2013, the realised average price of a hotel room was EUR 94.81 per day for the whole country. Twelve months previously it was EUR 93.48.

Hotel room occupancy rate and the monthly average price

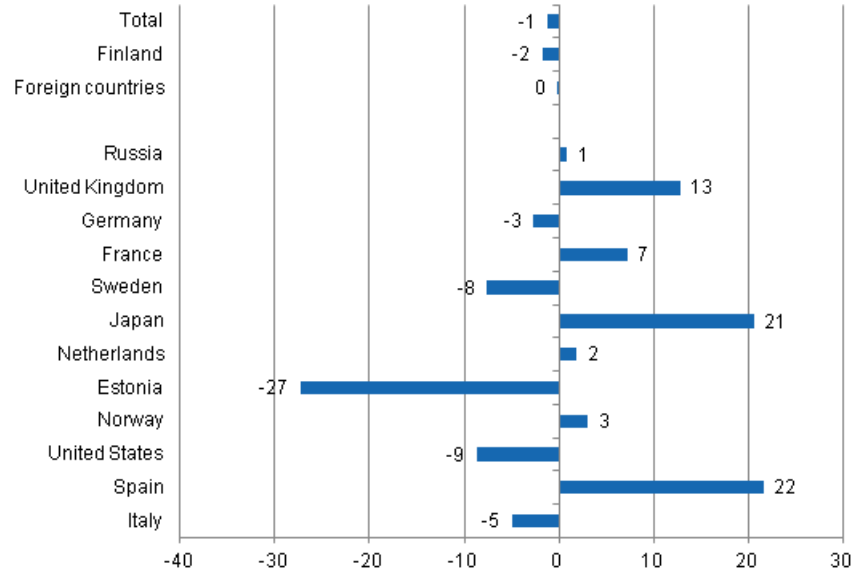


Total number of nights spent at all accommodation establishments fell by 1.2 per cent in January to March 2013

Between January and March 2013, the number of nights spent at accommodation establishments in Finland totalled 4.5 million, which was 1.2 per cent down on the respective time period of last year. Overnight stays by resident tourists decreased by 1.8 per cent and accommodation establishments recorded a total of 3 million of them. Overnight stays by foreign tourists numbered 1.5 million, which was almost the same as in January-March 2012.

Accommodation establishments recorded 521,000 overnight stays for Russians and, as usual, they were by far the largest group of foreign visitors in January-March 2013. Their overnight stays increased by 0.9 per cent from the respective time period of last year. British and German visitors came next. Overnight stays recorded for British visitors increased by 12.9 per cent year-on-year and totalled nearly 130,000. Germans spent nearly 115,000 nights at Finnish accommodation establishments, which was 2.7 per cent fewer than in the respective time period of last year. Nearly 95,000 nights spent were recorded for French visitors, which was 7.2 per cent more than twelve months earlier. Night spent by visitors from Sweden at Finnish accommodation establishments numbered 75,500, which was 7.6 per cent down on the same period twelve months earlier. Japanese and Dutch visitors both spent nearly 62,000 nights at Finnish accommodation establishments. Overnight stays by Japanese tourists increased heavily, by 20.7 per cent and those by Dutch tourists increased moderately, by 1.9 per cent. Among the most important countries of inbound tourism into Finland, overnight stays by Spanish tourists increased, however, most, by 21.6 per cent and 23,000 overnight stays were recorded for them. By contrast, overnight stays recorded for Estonian visitors decreased most in January-March 2013, by 27.3 per cent and totalled 47,000.

Change in overnight stays in January-March 2013/2012, %



Contents

Tables

Appendix tables

Appendix table 1.1. Capacity and its utilization, March 2013.....	6
Appendix table 1.2. Capacity and its utilization, January-March 2013.....	7
Appendix table 2.1. Nights spend in all establishments, March 2013.....	8
Appendix table 2.2. Nights spend in all establishments, January-March 2013.....	9
Appendix table 3.1. Hotel capacity and capacity utilization, March 2013.....	10
Appendix table 3.2. Hotel capacity and capacity utilization, January-March 2013.....	11
Appendix table 4.1. Nights spend in hotels, March 2013.....	12
Appendix table 4.2. Nights spend in hotels, January-March 2013.....	13
Appendix table 5.1. Visitor arrivals and nights spend by country of residence, March 2013.....	14
Appendix table 5.2. Visitor arrivals and nights spend by country of residence, January-March 2013.....	14
Appendix table 6. Nights spend in all establishments, 2013.....	14

Appendix tables

Appendix table 1.1. Capacity and its utilization, March 2013

Region	Number of establishments	Number of bedrooms	Occupancy rate of bedrooms %	Change of the occupancy rate compared to previous year, %-units	Average price of nights spend, in euros (incl. VAT 10 %)
Whole country	1 086	58 585	50,4	-2,9	52,00
Mainland Finland	1 056	57 581	50,9	-2,8	52,01
Uusimaa	141	14 530	54,9	-5,3	67,57
Varsinais-Suomi	59	3 618	47,6	4,5	50,14
Satakunta	36	1 399	36,9	0,3	56,54
Kanta-Häme	29	1 427	33,0	-5,9	47,73
Pirkanmaa	69	4 387	45,5	-9,0	53,16
Päijät-Häme	32	1 909	43,6	-4,2	51,52
Kymenlaakso	25	1 104	34,7	-1,3	47,27
South Karelia	36	1 758	51,7	-3,2	46,51
Etelä-Savo	71	2 092	34,3	-0,1	39,49
Pohjois-Savo	47	2 553	50,4	-5,7	47,84
North Karelia	51	1 568	43,1	3,0	44,80
Central Finland	47	2 992	49,7	-5,2	41,75
South Ostrobothnia	51	1 785	37,5	-4,8	41,43
Ostrobothnia	28	1 254	44,0	-6,2	58,21
Central Ostrobothnia	14	548	40,7	2,1	54,13
North Ostrobothnia	98	4 297	52,3	-3,5	45,20
Kainuu	42	2 157	59,9	0,8	37,10
Lapland	180	8 203	64,8	1,3	49,02
Åland	30	1 004	19,8	-0,6	..

Appendix table 1.2. Capacity and its utilization, January-March 2013

Region	Number of establishments	Number of bedrooms	Occupancy rate of bedrooms %	Change of the occupancy rate compared to previous year, %-units	Average price of nights spend, in euros (incl. VAT 10 %)
Whole country	1 067	57 992	47,1	-2,2	52,72
Mainland Finland	1 043	57 183	47,5	-2,3	52,72
Uusimaa	140	14 349	55,4	-2,9	66,83
Varsinais-Suomi	58	3 613	41,1	0,8	49,95
Satakunta	36	1 406	35,0	-0,5	58,81
Kanta-Häme	29	1 429	31,7	-5,8	49,17
Pirkanmaa	68	4 360	43,1	-6,0	52,88
Päijät-Häme	32	1 909	41,7	-3,3	47,81
Kymenlaakso	25	1 106	34,9	0,5	48,36
South Karelia	37	1 741	50,6	-0,7	47,74
Etelä-Savo	71	2 109	33,7	0,5	40,12
Pohjois-Savo	46	2 540	47,5	-4,5	47,69
North Karelia	52	1 570	38,9	-0,7	45,65
Central Finland	47	2 996	46,8	-4,7	43,03
South Ostrobothnia	49	1 733	37,2	-3,0	41,92
Ostrobothnia	28	1 264	40,6	-4,6	59,28
Central Ostrobothnia	14	546	36,7	-0,3	55,41
North Ostrobothnia	96	4 281	45,6	-2,2	43,90
Kainuu	42	2 158	49,7	-1,0	38,29
Lapland	174	8 071	55,9	0,3	50,64
Åland	24	809	18,3	1,3	..

Appendix table 2.1. Nights spend in all establishments, March 2013

Region	Nights spend, total	Change of nights spend, total, %	Nights spend, residents	Change of nights spend, residents, %	Nights spend, non-residents	Change of nights spend, non-residents, %
Whole country	1 737 710	-0,1	1 270 776	-1,4	466 934	3,7
Mainland Finland	1 725 267	-0,2	1 265 542	-1,5	459 725	3,7
Uusimaa	363 854	-7,2	206 926	-10,2	156 928	-2,9
Varsinais-Suomi	77 092	1,5	65 872	2,7	11 220	-5,1
Satakunta	22 757	-3,9	18 350	1,2	4 407	-20,7
Kanta-Häme	27 451	-2,3	25 303	9,4	2 148	-57,0
Pirkanmaa	108 371	-7,2	96 085	-5,5	12 286	-18,9
Päijät-Häme	51 001	-5,8	41 981	-6,5	9 020	-2,8
Kymenlaakso	20 000	-1,1	12 694	-10,6	7 306	21,3
South Karelia	55 976	-1,6	24 036	-20,2	31 940	19,4
Etelä-Savo	41 760	14,5	30 280	3,1	11 480	61,9
Pohjois-Savo	77 257	-4,8	68 093	-4,4	9 164	-8,1
North Karelia	40 615	14,8	32 298	8,6	8 317	46,9
Central Finland	109 349	1,3	94 702	6,1	14 647	-21,5
South Ostrobothnia	41 134	6,8	39 106	7,2	2 028	-1,7
Ostrobothnia	25 649	-9,7	21 043	-5,0	4 606	-26,4
Central Ostrobothnia	10 767	6,0	9 528	2,9	1 239	37,2
North Ostrobothnia	163 505	3,1	138 088	2,4	25 417	7,0
Kainuu	125 439	3,8	118 976	6,2	6 463	-27,2
Lapland	363 290	5,8	222 181	-1,0	141 109	18,7
Åland	12 443	12,9	5 234	31,7	7 209	2,2

Appendix table 2.2. Nights spend in all establishments, January-March 2013

Region	Nights spend, total	Change of nights spend, total, %	Nights spend, residents	Change of nights spend, residents, %	Nights spend, non-residents	Change of nights spend, non-residents, %
Whole country	4 544 290	-1,2	3 047 217	-1,8	1 497 073	-0,1
Mainland Finland	4 518 161	-1,3	3 035 786	-1,9	1 482 375	-0,1
Uusimaa	1 052 404	-5,9	583 012	-6,9	469 392	-4,6
Varsinais-Suomi	205 791	-0,6	171 782	-0,2	34 009	-2,3
Satakunta	61 839	-1,8	49 201	1,9	12 638	-14,1
Kanta-Häme	74 374	-7,0	63 773	0,6	10 601	-36,2
Pirkanmaa	302 818	-3,2	259 371	-3,5	43 447	-0,8
Päijät-Häme	146 328	-4,7	120 084	-2,3	26 244	-14,6
Kymenlaakso	58 879	7,1	35 664	-4,4	23 215	31,5
South Karelia	159 579	3,3	66 123	-9,4	93 456	14,6
Etelä-Savo	119 151	8,2	81 582	3,0	37 569	21,8
Pohjois-Savo	207 633	-5,1	169 764	-4,3	37 869	-8,7
North Karelia	101 390	-0,8	74 605	4,1	26 785	-12,3
Central Finland	296 166	-1,3	244 425	3,7	51 741	-19,7
South Ostrobothnia	106 904	2,6	100 239	2,7	6 665	1,8
Ostrobothnia	66 019	-9,5	53 535	-4,1	12 484	-27,2
Central Ostrobothnia	27 368	1,5	24 605	-1,7	2 763	41,8
North Ostrobothnia	397 049	4,4	304 942	2,9	92 107	9,7
Kainuu	281 647	-2,0	243 100	0,8	38 547	-16,6
Lapland	852 822	2,5	389 979	-3,1	462 843	7,8
Åland	26 129	13,5	11 431	26,1	14 698	5,3

Appendix table 3.1. Hotel capacity and capacity utilization, March 2013

Region / municipality	Number of establishments	Number of bedrooms	Occupancy rate of bedrooms %	Change compared to previous year, %-units	Room price, euros (incl. VAT 10 %)	¹⁾ RevPAR, euros (incl. VAT 10 %)
Whole country	635	50 843	52,8	-3,5	94,81	50,05
Mainland Finland	621	50 080	53,3	-3,5	94,81	50,50
Uusimaa	116	14 156	55,7	-5,0	99,26	55,28
Espoo	12	1 220	47,5	-4,9	88,63	42,08
Helsinki	53	8 326	59,7	-5,0	102,69	61,30
Vantaa	11	2 159	67,4	-4,2	102,34	68,97
Varsinais-Suomi	34	3 076	52,4	5,9	78,97	41,41
Turku	18	2 051	48,4	-0,2	79,90	38,71
Satakunta	24	1 130	41,5	-1,1	84,10	34,93
Pori	9	618	45,5	2,1	81,81	37,22
Kanta-Häme	18	1 270	34,9	-6,9	87,51	30,53
Hämeenlinna	8	733	32,5	-12,3	96,58	31,40
Pirkanmaa	42	3 800	46,6	-10,4	91,37	42,62
Tampere	24	2 747	50,3	-13,4	93,22	46,91
Päijät-Häme	17	1 738	45,6	-4,4	87,80	40,06
Lahti	7	600	54,2	-1,6	95,20	51,63
Kymenlaakso	15	915	37,0	-2,7	82,49	30,55
Kouvola	6	428	37,3	-7,7	81,58	30,42
South Karelia	19	1 396	54,5	-6,0	97,26	53,02
Lappeenranta	7	743	61,2	-7,7	91,11	55,72
Etelä-Savo	27	1 525	38,0	-1,7	71,19	27,04
Mikkeli	8	564	44,3	-4,9	78,55	34,77
Pohjois-Savo	28	2 298	51,8	-7,3	90,23	46,71
Kuopio	14	1 393	59,1	-10,4	96,28	56,88
North Karelia	24	1 296	47,2	3,1	82,85	39,10
Joensuu	9	706	52,6	1,9	78,93	41,55
Central Finland	28	2 671	52,3	-6,3	101,02	52,79
Jyväskylä	10	1 375	51,4	-12,2	90,81	46,66
South Ostrobothnia	28	1 495	43,1	-5,1	75,41	32,52
Seinäjoki	8	562	48,1	-1,5	80,55	38,75
Ostrobothnia	21	1 197	45,7	-5,8	85,31	38,95
Vaasa	8	800	51,4	-7,2	87,49	44,93
Central Ostrobothnia	10	500	41,4	1,5	78,74	32,64
Kokkola	5	362	47,9	3,3	83,01	39,80
North Ostrobothnia	49	3 443	54,2	-3,4	93,82	50,83
Kuusamo	11	753	59,9	-2,5	125,68	75,33
Oulu	12	1 584	61,1	-5,7	83,77	51,21
Kainuu	22	1 773	62,2	-2,0	91,03	56,64
Kajaani	6	419	40,0	-2,1	80,04	31,99
Sotkamo	7	1 081	78,9	-0,6	97,31	76,77
Lapland	99	6 401	69,3	0,9	105,50	73,15
Rovaniemi	12	1 233	64,8	2,1	88,74	57,48
Åland	14	763	22,2	-0,6
Maarianhamina	7	501	28,9	1,0

1) RevPar = Average accommodation sales revenue per available room. Calculation formula: RevPar = Average room price * Occupancy rate.

Appendix table 3.2. Hotel capacity and capacity utilization, January-March 2013

Region / municipality	Number of establishments	Number of bedrooms	Occupancy rate of bedrooms %	Change compared to previous year, %-units	Room price, euros (incl. VAT 10 %)	¹⁾ RevPAR, euros (incl. VAT 10 %)
Whole country	628	50 398	49,8	-2,5	93,22	46,40
Mainland Finland	618	49 801	50,1	-2,5	93,22	46,73
Uusimaa	116	13 985	56,1	-2,8	98,63	55,29
Espoo	12	1 219	47,5	-5,0	84,03	39,89
Helsinki	53	8 165	60,0	-2,0	102,80	61,72
Vantaa	11	2 156	67,9	-2,2	101,33	68,79
Varsinais-Suomi	34	3 078	45,0	1,7	78,90	35,54
Turku	18	2 051	45,8	0,5	80,16	36,74
Satakunta	24	1 137	39,5	-1,7	84,29	33,31
Pori	9	626	42,8	0,5	81,22	34,77
Kanta-Häme	18	1 271	33,7	-6,6	86,44	29,09
Hämeenlinna	8	734	34,4	-9,5	93,58	32,20
Pirkanmaa	43	3 804	43,7	-7,0	91,30	39,93
Tampere	24	2 739	47,7	-8,3	93,26	44,45
Päijät-Häme	17	1 738	43,7	-3,5	84,11	36,80
Lahti	7	600	52,0	1,5	89,84	46,70
Kymenlaakso	15	912	37,9	-0,1	83,15	31,55
Kouvola	6	425	40,0	-3,3	80,60	32,21
South Karelia	19	1 377	54,4	-2,0	98,92	53,79
Lappeenranta	7	722	62,3	-1,2	92,82	57,81
Etelä-Savo	27	1 546	37,6	-0,0	70,43	26,50
Mikkeli	8	559	44,5	-2,2	78,69	34,99
Pohjois-Savo	27	2 285	49,2	-4,4	88,70	43,61
Kuopio	13	1 383	56,3	-4,9	93,20	52,46
North Karelia	24	1 297	42,8	-0,9	81,73	34,97
Joensuu	9	707	48,2	-3,3	80,32	38,75
Central Finland	28	2 670	49,3	-5,5	102,81	50,64
Jyväskylä	10	1 375	49,8	-11,1	93,92	46,75
South Ostrobothnia	28	1 453	42,9	-2,7	73,08	31,38
Seinäjoki	8	562	48,0	0,4	79,53	38,19
Ostrobothnia	21	1 202	42,1	-4,4	83,81	35,29
Vaasa	8	799	46,8	-5,6	87,34	40,91
Central Ostrobothnia	10	499	37,9	-0,8	79,91	30,25
Kokkola	5	361	43,3	-0,7	84,59	36,60
North Ostrobothnia	48	3 440	47,7	-2,4	89,69	42,78
Kuusamo	10	746	50,3	0,8	111,52	56,13
Oulu	12	1 584	54,5	-5,7	85,66	46,69
Kainuu	22	1 768	53,5	-1,4	84,97	45,47
Kajaani	6	415	38,3	-1,8	79,77	30,55
Sotkamo	7	1 079	65,5	0,2	91,53	59,95
Lapland	97	6 339	61,1	0,2	100,92	61,65
Rovaniemi	12	1 236	71,3	-0,8	99,24	70,74
Åland	10	598	21,1	1,2
Maarianhamina	5	391	28,4	3,2

1) RevPar = Average accommodation sales revenue per available room. Calculation formula: RevPar = Average room price * Occupancy rate.

Appendix table 4.1. Nights spend in hotels, March 2013

Region / municipality	Nights spend, total	Change of nights spend, total, %	Nights spend, residents	Change of nights spend, residents, %	Nights spend, non-residents	Change of nights spend, non-residents, %
Whole country	1 443 827	-2,0	1 034 391	-3,5	409 436	2,0
Mainland Finland	1 434 591	-2,1	1 030 278	-3,6	404 313	1,9
Uusimaa	352 113	-6,7	199 825	-10,2	152 288	-1,6
Espoo	25 183	-12,1	14 148	-15,3	11 035	-7,5
Helsinki	223 025	-4,6	111 106	-8,1	111 919	-0,8
Vantaa	64 548	-9,8	42 346	-14,1	22 202	-0,3
Varsinais-Suomi	70 820	3,1	60 861	4,9	9 959	-6,8
Turku	48 309	0,9	41 188	1,8	7 121	-3,9
Satakunta	19 643	-3,3	15 970	5,9	3 673	-29,8
Pori	11 491	3,6	9 846	9,5	1 645	-21,7
Kanta-Häme	24 108	-5,2	21 977	7,4	2 131	-57,1
Hämeenlinna	12 662	-19,5	11 407	-2,9	1 255	-68,5
Pirkanmaa	89 136	-9,5	78 088	-7,9	11 048	-19,3
Tampere	64 152	-11,7	54 144	-9,9	10 008	-20,4
Päijät-Häme	43 286	-7,8	35 041	-8,9	8 245	-2,9
Lahti	14 255	-19,7	9 033	-25,9	5 222	-6,1
Kymenlaakso	15 217	-10,0	9 589	-19,4	5 628	12,0
Kouvola	7 098	-19,5	5 246	-28,1	1 852	22,1
South Karelia	47 679	-5,0	19 620	-23,2	28 059	13,9
Lappeenranta	26 565	-5,4	13 643	-24,1	12 922	27,9
Etelä-Savo	29 098	-2,0	23 880	-5,1	5 218	14,9
Mikkeli	12 216	-3,9	9 487	-10,9	2 729	32,4
Pohjois-Savo	67 953	-4,4	60 856	-4,2	7 097	-6,0
Kuopio	46 454	-5,1	41 321	-4,5	5 133	-9,5
North Karelia	33 728	8,2	27 296	5,3	6 432	22,7
Joensuu	17 165	-0,6	12 823	-4,1	4 342	11,6
Central Finland	100 961	2,1	87 210	6,9	13 751	-20,8
Jyväskylä	33 907	-5,3	29 692	1,4	4 215	-35,3
South Ostrobothnia	35 058	-0,3	33 201	0,2	1 857	-9,2
Seinäjoki	11 490	-11,9	10 261	-13,2	1 229	1,1
Ostrobothnia	23 424	-12,0	19 120	-6,2	4 304	-31,0
Vaasa	17 884	-13,1	14 359	-9,4	3 525	-25,6
Central Ostrobothnia	9 030	3,6	8 316	2,9	714	13,7
Kokkola	7 156	6,2	6 544	6,1	612	6,3
North Ostrobothnia	115 469	3,6	96 710	2,8	18 759	7,7
Kuusamo	37 779	1,1	32 075	2,0	5 704	-3,7
Oulu	51 079	4,5	42 645	3,0	8 434	12,6
Kainuu	90 735	4,4	86 205	8,0	4 530	-36,7
Kajaani	8 213	7,3	7 567	8,8	646	-7,8
Sotkamo	78 138	8,4	74 809	11,5	3 329	-33,1
Lapland	267 133	2,3	146 513	-8,6	120 620	19,6
Rovaniemi	42 889	4,6	16 137	-11,5	26 752	17,4
Åland	9 236	13,3	4 113	27,3	5 123	4,1
Maarianhamina	7 591	9,5	3 914	30,8	3 677	-6,6

Appendix table 4.2. Nights spend in hotels, January-March 2013

Region / municipality	Nights spend, total	Change of nights spend, total, %	Nights spend, residents	Change of nights spend, residents, %	Nights spend, non-residents	Change of nights spend, non-residents, %
Whole country	3 861 166	-2,6	2 561 166	-2,9	1 300 000	-1,9
Mainland Finland	3 842 045	-2,7	2 552 299	-3,0	1 289 746	-2,0
Uusimaa	1 016 474	-5,7	561 933	-6,9	454 541	-4,1
Espoo	72 289	-15,0	41 224	-12,2	31 065	-18,5
Helsinki	635 313	-5,1	302 329	-7,1	332 984	-3,1
Vantaa	191 421	-5,3	125 727	-7,4	65 694	-0,9
Varsinais-Suomi	189 451	0,1	158 582	1,0	30 869	-4,1
Turku	131 730	1,4	108 831	0,2	22 899	7,1
Satakunta	54 255	0,3	43 503	7,5	10 752	-21,2
Pori	32 305	9,3	27 142	15,1	5 163	-13,8
Kanta-Häme	65 583	-9,7	55 837	-0,7	9 746	-40,6
Hämeenlinna	37 696	-19,3	31 651	-6,1	6 045	-53,5
Pirkanmaa	244 629	-5,3	209 349	-4,7	35 280	-8,1
Tampere	176 325	-4,7	145 783	-4,3	30 542	-6,8
Päijät-Häme	124 306	-7,6	101 689	-4,3	22 617	-19,9
Lahti	41 213	-13,2	28 079	-10,7	13 134	-18,1
Kymenlaakso	46 200	-1,8	28 730	-11,2	17 470	19,1
Kouvola	21 891	-9,5	15 930	-19,2	5 961	33,0
South Karelia	135 990	-1,9	55 341	-12,3	80 649	6,7
Lappeenranta	75 329	-0,7	40 451	-12,4	34 878	17,5
Etelä-Savo	84 827	-3,1	67 109	-2,5	17 718	-5,2
Mikkeli	36 201	-1,9	26 515	-5,2	9 686	8,6
Pohjois-Savo	183 801	-5,3	154 058	-4,3	29 743	-10,0
Kuopio	127 899	-2,5	107 440	-0,7	20 459	-11,2
North Karelia	85 738	-6,0	64 549	0,8	21 189	-21,9
Joensuu	44 378	-14,1	32 671	-6,3	11 707	-30,2
Central Finland	273 525	-0,3	225 284	4,5	48 241	-18,0
Jyväskylä	96 666	-5,3	82 113	1,2	14 553	-30,4
South Ostrobothnia	94 925	-1,1	89 219	-0,8	5 706	-6,0
Seinäjoki	32 449	-10,2	29 196	-10,6	3 253	-7,1
Ostrobothnia	61 402	-12,1	49 312	-6,5	12 090	-29,4
Vaasa	46 432	-13,0	37 294	-8,2	9 138	-28,1
Central Ostrobothnia	23 905	1,1	22 127	0,2	1 778	14,0
Kokkola	18 744	1,9	17 215	1,4	1 529	7,1
North Ostrobothnia	279 451	2,1	213 926	1,3	65 525	5,1
Kuusamo	90 494	5,6	63 559	4,2	26 935	9,1
Oulu	123 441	0,8	101 019	0,9	22 422	0,3
Kainuu	217 778	1,8	186 768	5,5	31 010	-16,2
Kajaani	21 856	2,4	19 305	6,4	2 551	-20,5
Sotkamo	182 350	4,5	158 305	7,8	24 045	-12,9
Lapland	659 805	1,4	264 983	-8,3	394 822	9,2
Rovaniemi	141 621	1,5	39 133	-8,0	102 488	5,7
Åland	19 121	16,2	8 867	21,5	10 254	12,0
Maarianhamina	16 043	15,7	8 274	27,6	7 769	5,3

Appendix table 5.1. Visitor arrivals and nights spend by country of residence, March 2013

Country of residence	Visitor arrivals in all accommodation establishments	Nights spend in all accommodation establishments	Change of nights spend in all accommodation establishments, %	Nights spend in hotels	Change of nights spend in hotels, %
Total	849 182	1 737 710	-0,1	1 443 827	-2,0
Finland	646 612	1 270 776	-1,4	1 034 391	-3,5
Foreign countries	202 570	466 934	3,7	409 436	2,0
Sweden	17 700	29 182	-9,8	27 757	-6,0
Germany	14 805	42 978	-1,0	38 932	-1,8
Russia	61 867	126 677	10,8	102 906	6,9
United Kingdom	13 509	35 094	10,9	31 060	8,6
United States	5 166	11 373	-0,1	11 169	0,6
Norway	6 301	14 210	-4,4	11 569	-9,0
Netherlands	6 152	18 667	-0,5	15 818	-1,3
Italy	3 322	8 622	7,1	7 968	11,0
France	8 517	31 973	18,8	28 837	16,5
Japan	10 468	20 742	33,8	20 300	35,0
Estonia	6 463	17 191	-28,7	13 826	-27,8
Spain	3 333	8 665	23,3	7 544	21,6

Appendix table 5.2. Visitor arrivals and nights spend by country of residence, January-March 2013

Country of residence	Visitor arrivals in all accommodation establishments	Nights spend in all accommodation establishments	Change of nights spend in all accommodation establishments, %	Nights spend in hotels	Change of nights spend in hotels, %
Total	2 241 789	4 544 290	-1,2	3 861 166	-2,6
Finland	1 631 595	3 047 217	-1,8	2 561 166	-2,9
Foreign countries	610 194	1 497 073	-0,1	1 300 000	-1,9
Sweden	46 994	75 525	-7,6	72 444	-4,5
Germany	39 347	114 654	-2,7	105 624	-2,9
Russia	212 981	521 202	0,9	424 993	-3,1
United Kingdom	42 536	129 858	12,9	109 336	10,6
United States	13 081	28 869	-8,7	28 260	-8,6
Norway	16 630	33 273	3,1	28 929	2,2
Netherlands	18 662	61 787	1,9	50 250	0,3
Italy	9 596	22 719	-5,0	20 839	-3,7
France	24 840	94 550	7,2	87 572	6,7
Japan	31 681	61 867	20,7	60 401	20,7
Estonia	18 690	47 032	-27,3	38 133	-25,2
Spain	7 730	22 981	21,6	17 290	0,8

Appendix table 6. Nights spend in all establishments, 2013

Month	Nights spend, total	Change of nights spend, total, %	Nights spend, residents	Change of nights spend, residents, %	Nights spend, non-residents	Change of nights spend, non-residents, %
Total	4 544 290	-1,2	3 047 217	-1,8	1 497 073	-0,1
January	1 362 621	-2,9	754 133	-4,1	608 488	-1,3
February	1 443 959	-1,0	1 022 308	-0,5	421 651	-2,2
March	1 737 710	-0,1	1 270 776	-1,4	466 934	3,7

Suomen virallinen tilasto
Finlands officiella statistik
Official Statistics of Finland

Transport and Tourism 2013

Inquiries

Marjut Tuominen 09 1734 3556

Merja Rönkä 09 1734 3209

Director in charge:

Hannele Orjala

liikenne.matkailu@stat.fi

www.stat.fi

Source: Accommodation Statistics. Statistics Finland