

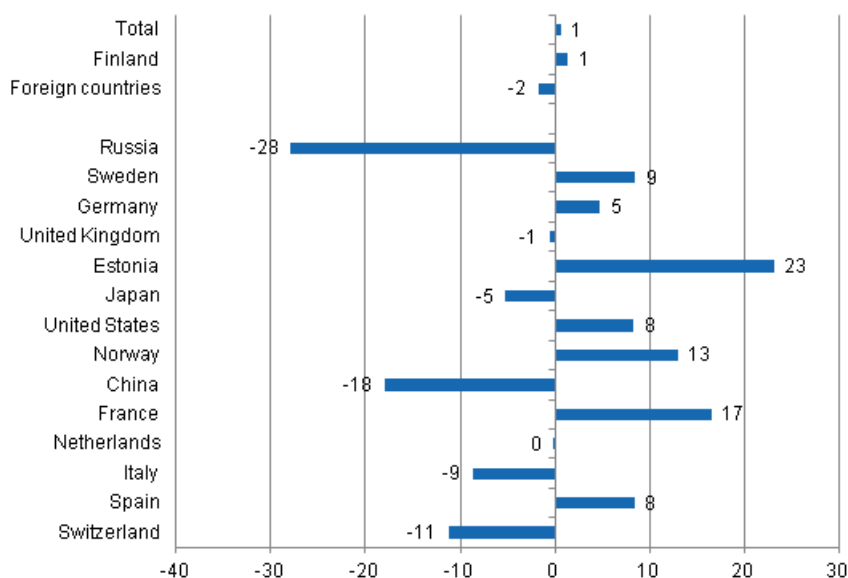
Accommodation statistics

2014, October

Nights spent by foreign tourists in Finland decreased by 1.8 per cent in October

The number of recorded nights spent by foreign tourists at Finnish accommodation establishments in October 2014 was 309,000, which was 1.8 per cent fewer than in October 2013. By contrast, overnight stays by resident tourists went up by 1.3 per cent and totalled nearly 1.1 million. The total number of overnight stays was just under 1.4 million. The number was almost the same as in October 2013; growth only amounted to 0.6 per cent. These figures are preliminary data from Statistics Finland's statistics on accommodation establishments and they have been collected from accommodation establishments with at least 20 beds or caravan pitches with electricity connection, and youth hostels.

Change in overnight stays in October 2014/2013, %



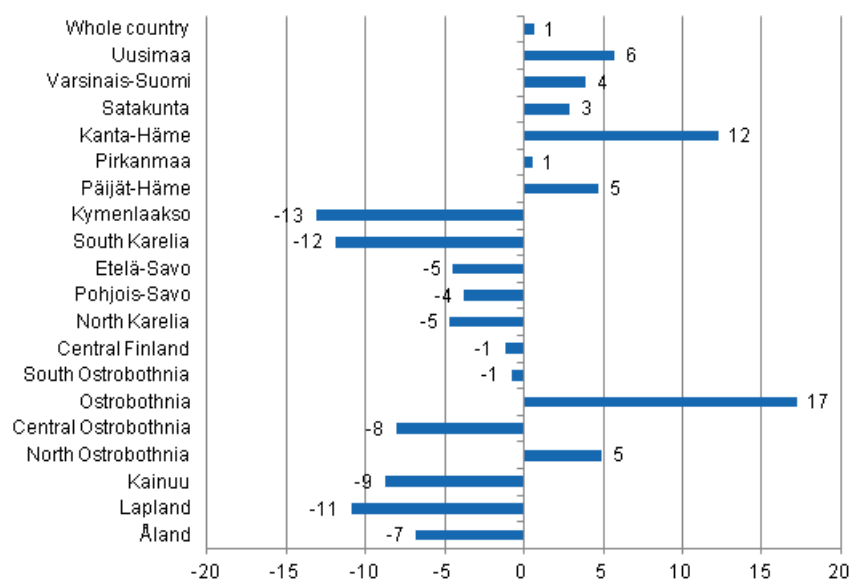
The steep decline in overnight stays by Russian visitors continued in October. Altogether, close on 54,000 overnight stays were recorded for them at Finnish accommodation establishments, which was as much as 27.9 per cent lower than one year before. However, Russians were still the largest group of foreign tourists

in October 2014. Swedish tourists came next with 34,000 nights spent, with an increase of 8.5 per cent from the previous year. Altogether 24,000 overnight stays were recorded for German visitors, and they made up the third largest group of foreign tourists. Overnight stays by German tourists increased by 4.7 per cent compared with October 2013. Overnight stays recorded at accommodation establishments for British visitors totalled 19,000, which was 0.6 per cent less than one year before.

Overnight stays by Estonian visitors increased most in October. A total of 16,500 overnight stays were recorded for them, and the growth from October 2013 amounted to 23.2 per cent. Overall, 11,000 to 12,500 nights were recorded for visitors from Norway and the USA. Overnight stays by Norwegian visitors increased by 13.0 per cent and those by visitors from the USA by 8.3 per cent year-on-year. By contrast, overnight stays recorded for Japanese visitors decreased by 5.2 per cent and totalled 13,000.

By region, the total number of overnight stays increased in October most in Ostrobothnia, up by 17.2 per cent. Kanta-Häme came next with 12.3 per cent. In Uusimaa, overnight stays increased by 5.7 per cent and in North Ostrobothnia and Päijät-Häme by close on five per cent. The biggest decreases in overnight stays were recorded in Kymenlaakso, 13.1 per cent, and in South Karelia, 11.9 per cent. In Lapland, overnight stays contracted by 10.9 per cent. Overnight stays in the whole country increased by 0.6 per cent from last year.

Change in overnight stays in October by region 2014 / 2013, %



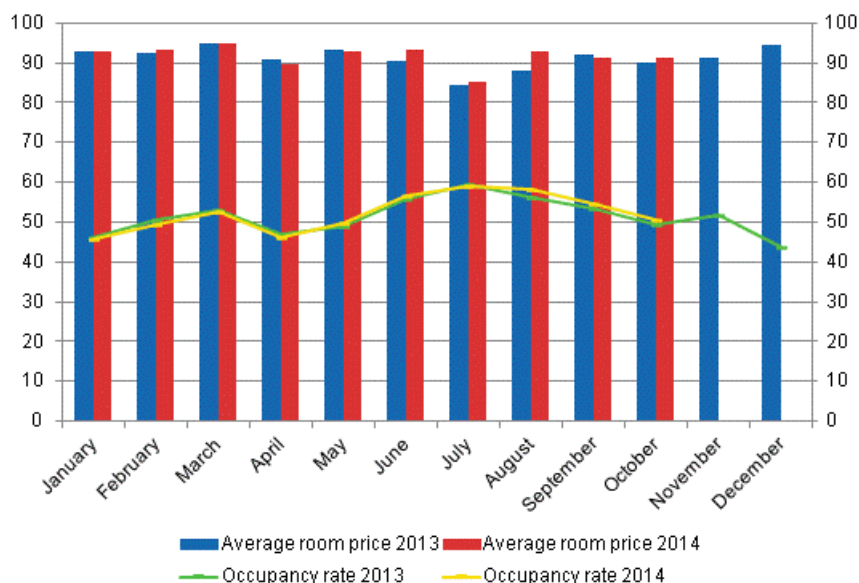
Overnight stays in hotels increased by 1.1 per cent in October 2014

In October 2014, the total number of nights spent in hotels was good 1.2 million, which was 1.1 per cent higher than twelve months earlier. Overnight stays by resident tourists increased by 1.5 per cent and accommodation establishments recorded nearly 938,000 of them. Overnight stays by foreign tourists remained on level with the previous year and hotels recorded 280,000 of them.

The occupancy rate of hotel rooms in the whole country was 50.7 per cent in October. One year earlier, it was 49.2 per cent. Among the regions, the highest occupancy rates of hotel rooms were measured in Uusimaa, 65.1 per cent, and Pirkanmaa, 59.1 per cent. In Vantaa, the hotel room occupancy rate rose to 70.7 per cent and in Tampere to 66.4 per cent. Hotel room occupancy rate in Helsinki was 71.8 per cent.

In October, the realised average price of a hotel room was EUR 91.17 per day for the whole country. Twelve months previously, it was EUR 90.01.

Hotel room occupancy rate and the monthly average price



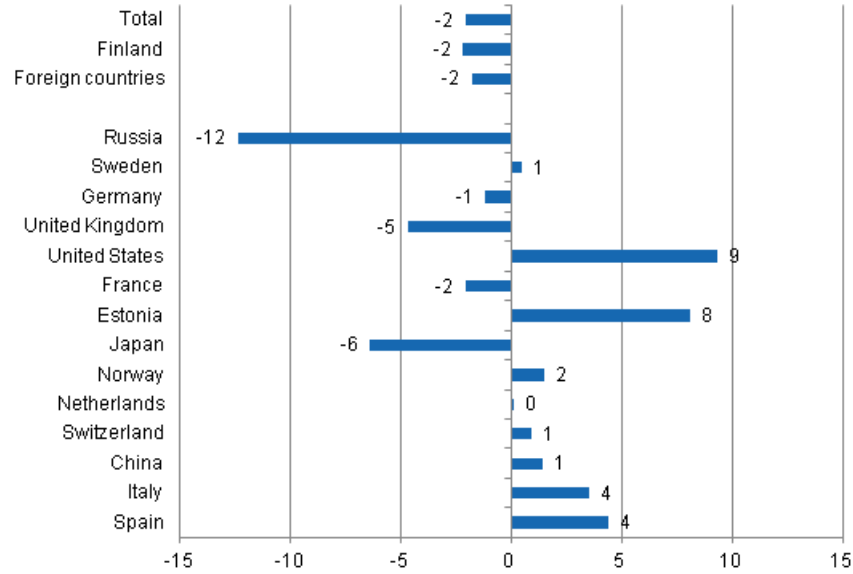
Total number of nights spent at all accommodation establishments fell by 2.1 per cent in January to October

Between January and October 2014, the number of nights spent at accommodation establishments in Finland totalled 17.2 million. This was 2.1 per cent lower than in the corresponding period one year earlier. Overnight stays by resident tourists decreased by 2.2 per cent and accommodation establishments recorded 12.3 million of them. Overnight stays by foreign tourists numbered 4.8 million, which was 1.8 per cent fewer than in January to October 2013.

Between January and October 2014, the number of nights spent by Russian visitors at accommodation establishments in Finland totalled close on 1.2 million, which was 12.4 per cent down on the respective time period of last year. Russians were still, by far, the largest group of foreign visitors in January to October, while Swedish visitors came next with 480,000 overnight stays. The overnight stays of Swedish visitors increased by 0.5 per cent from the respective time period of last year. German visitors made up the third largest group with 444,000 overnight stays. The number of nights recorded for them at Finnish accommodation establishments was 1.2 per cent fewer than one year earlier.

Overnight stays by British tourists decreased by 4.7 per cent from the corresponding period last year and amounted to 288,000. Among the most important countries of inbound tourism into Finland, overnight stays of visitors from the United States increased most, or by 9.3 per cent, and 182,000 overnight stays were recorded for them in January to October. Overnight stays by Estonian visitors increased by 8.1 per cent and those by Spanish visitors by 4.4 per cent. By contrast, overnight stays of Japanese visitors decreased by 6.4 per cent from the respective time period of last year.

Change in overnight stays in January-October 2014/2013, %



Contents

Tables

Appendix tables

Appendix table 1.1. Capacity and its utilization, October 2014.....	6
Appendix table 1.2. Capacity and its utilization, January-October 2014.....	7
Appendix table 2.1. Nights spend in all establishments, October 2014.....	8
Appendix table 2.2. Nights spend in all establishments, January-October 2014.....	9
Appendix table 3.1. Hotel capacity and capacity utilization, October 2014.....	10
Appendix table 3.2. Hotel capacity and capacity utilization, January-October 2014.....	11
Appendix table 4.1. Nights spend in hotels, October 2014.....	12
Appendix table 4.2. Nights spend in hotels, January-October 2014.....	13
Appendix table 5.1. Visitor arrivals and nights spend by country of residence, October 2014.....	14
Appendix table 5.2. Visitor arrivals and nights spend by country of residence, January-October 2014.....	14
Appendix table 6. Nights spend in all establishments, 2014.....	15

Appendix tables

Appendix table 1.1. Capacity and its utilization, October 2014

Region	Number of establishments	Number of bedrooms	Occupancy rate of bedrooms, %	Change of the occupancy rate compared to previous year, %-units	Average price of nights spend, in euros (incl. VAT 10 %)
Whole country	1,099	58,303	46.7	1.3	57.33
Mainland Finland	1,059	57,130	47.2	1.4	57.32
Uusimaa	136	14,515	64.4	3.0	69.92
Varsinais-Suomi	65	3,623	49.7	5.6	52.03
Satakunta	42	1,549	40.9	3.6	57.62
Kanta-Häme	31	1,437	41.1	4.6	49.24
Pirkanmaa	70	4,553	55.5	4.4	61.14
Päijät-Häme	35	1,990	38.2	2.2	47.60
Kymenlaakso	28	1,122	40.0	-6.6	51.52
South Karelia	38	1,760	44.9	-6.0	53.61
Etelä-Savo	83	2,344	33.1	-1.7	41.82
Pohjois-Savo	51	2,650	44.1	-2.2	48.83
North Karelia	49	1,498	44.9	-0.1	51.33
Central Finland	46	3,052	50.2	4.6	55.39
South Ostrobothnia	48	1,789	42.3	-1.4	40.34
Ostrobothnia	29	1,279	51.9	4.3	59.67
Central Ostrobothnia	14	535	48.7	-1.2	62.24
North Ostrobothnia	95	4,381	40.6	-0.3	47.03
Kainuu	42	2,151	40.9	-0.7	34.59
Lapland	157	6,902	20.2	-1.8	42.90
Åland	40	1,173	20.9	-1.7	¹⁾ ..

1) [...] Data too uncertain for presentation.

Appendix table 1.2. Capacity and its utilization, January-October 2014

Region	Number of establishments	Number of bedrooms	Occupancy rate of bedrooms, %	Change of the occupancy rate compared to previous year, %-units	Average price of nights spend, in euros (incl. VAT 10 %)
Whole country	1,211	61,321	48.6	0.2	50.80
Mainland Finland	1,160	60,038	48.8	0.1	50.93
Uusimaa	143	14,730	62.9	0.6	65.55
Varsinais-Suomi	74	3,799	50.1	1.6	46.61
Satakunta	43	1,629	38.7	-2.8	51.47
Kanta-Häme	34	1,564	36.4	-0.1	46.08
Pirkanmaa	74	4,484	48.8	0.4	51.30
Päijät-Häme	38	2,075	43.8	3.0	48.63
Kymenlaakso	30	1,158	42.9	-1.2	45.75
South Karelia	40	1,892	50.9	-1.6	47.28
Etelä-Savo	88	2,613	39.6	-1.8	36.52
Pohjois-Savo	53	2,690	47.2	-1.1	45.04
North Karelia	54	1,599	44.2	1.5	43.97
Central Finland	53	3,292	48.1	1.8	50.71
South Ostrobothnia	52	1,893	42.0	-0.9	39.37
Ostrobothnia	34	1,392	46.2	-0.6	49.44
Central Ostrobothnia	18	600	43.3	0.3	48.81
North Ostrobothnia	101	4,495	45.4	2.1	39.48
Kainuu	48	2,270	41.4	-3.6	36.37
Lapland	184	7,866	39.5	-0.5	43.36
Åland	51	1,283	35.3	2.3	1) ..

1) [...] Data too uncertain for presentation.

Appendix table 2.1. Nights spend in all establishments, October 2014

Region	Nights spend, total	Change of nights spend, total, %	Nights spend, residents	Change of nights spend, residents, %	Nights spend, non-residents	Change of nights spend, non-residents, %
Whole country	1,378,247	0.6	1,069,310	1.3	308,937	-1.8
Mainland Finland	1,364,898	0.7	1,063,289	1.4	301,609	-1.8
Uusimaa	432,411	5.7	258,892	6.0	173,519	5.4
Varsinais-Suomi	88,308	3.9	73,982	1.8	14,326	16.2
Satakunta	27,996	2.9	23,881	3.4	4,115	0.3
Kanta-Häme	31,621	12.3	28,533	12.5	3,088	10.0
Pirkanmaa	122,955	0.5	105,612	-0.2	17,343	5.2
Päijät-Häme	45,719	4.7	39,719	2.1	6,000	26.2
Kymenlaakso	23,275	-13.1	17,654	10.0	5,621	-47.7
South Karelia	48,145	-11.9	32,539	1.2	15,606	-30.5
Etelä-Savo	40,398	-4.5	33,885	-0.0	6,513	-22.4
Pohjois-Savo	61,855	-3.8	57,228	-2.3	4,627	-19.7
North Karelia	34,799	-4.7	29,411	-3.6	5,388	-10.2
Central Finland	70,112	-1.2	64,441	-0.9	5,671	-4.3
South Ostrobothnia	48,738	-0.8	46,672	-1.2	2,066	10.2
Ostrobothnia	30,435	17.2	24,589	19.6	5,846	8.3
Central Ostrobothnia	10,936	-8.1	9,844	-10.9	1,092	28.9
North Ostrobothnia	101,697	4.9	90,715	3.7	10,982	16.5
Kainuu	75,131	-8.8	71,942	-7.6	3,189	-29.3
Lapland	70,367	-10.9	53,750	-7.9	16,617	-19.4
Åland	13,349	-6.8	6,021	-13.6	7,328	-0.3

Appendix table 2.2. Nights spend in all establishments, January-October 2014

Region	Nights spend, total	Change of nights spend, total, %	Nights spend, residents	Change of nights spend, residents, %	Nights spend, non-residents	Change of nights spend, non-residents, %
Whole country	17,180,977	-2.1	12,342,978	-2.2	4,837,999	-1.8
Mainland Finland	16,803,140	-2.0	12,195,603	-2.2	4,607,537	-1.7
Uusimaa	4,399,493	0.7	2,369,333	0.6	2,030,160	0.9
Varsinais-Suomi	1,045,010	-0.2	838,459	-2.4	206,551	10.1
Satakunta	355,424	-6.7	307,431	-6.6	47,993	-7.0
Kanta-Häme	326,549	2.0	291,394	2.9	35,155	-4.9
Pirkanmaa	1,207,481	-6.2	1,016,020	-6.4	191,461	-5.0
Päijät-Häme	513,993	-1.1	427,874	-3.5	86,119	12.5
Kymenlaakso	310,636	-3.8	217,717	4.3	92,919	-18.5
South Karelia	597,020	-8.3	314,210	-1.8	282,810	-14.5
Etelä-Savo	686,007	-6.0	505,285	-6.4	180,722	-4.9
Pohjois-Savo	733,366	-3.4	626,633	-3.5	106,733	-3.1
North Karelia	435,568	-3.8	341,931	-8.3	93,637	17.2
Central Finland	932,361	-3.8	797,446	-4.5	134,915	0.8
South Ostrobothnia	597,419	-3.6	574,460	-2.9	22,959	-17.7
Ostrobothnia	356,173	-5.7	289,176	-7.9	66,997	5.2
Central Ostrobothnia	149,882	1.5	132,807	0.4	17,075	11.6
North Ostrobothnia	1,422,273	2.8	1,199,529	3.5	222,744	-1.1
Kainuu	827,277	-3.4	747,800	-2.7	79,477	-10.1
Lapland	1,907,208	-2.6	1,198,098	-1.7	709,110	-4.2
Åland	377,837	-4.5	147,375	-5.8	230,462	-3.6

Appendix table 3.1. Hotel capacity and capacity utilization, October 2014

Region / municipality	Number of establishments	Number of bedrooms	Occupancy rate of bedrooms, %	Change compared to previous year, %-units	Room price, euros (incl. VAT 10 %)	¹⁾ RevPAR, euros (incl. VAT 10 %)
Whole country	608	50,265	50.7	1.5	91.17	46.24
Mainland Finland	594	49,498	51.1	1.5	91.17	46.56
Uusimaa	111	14,158	65.1	2.8	103.47	67.37
Espoo	11	1,177	55.8	-0.9	86.82	48.47
Helsinki	51	8,382	71.8	4.9	107.64	77.27
Vantaa	11	2,220	70.7	-1.0	105.03	74.26
Varsinais-Suomi	36	2,966	54.8	7.1	78.69	43.11
Turku	18	2,035	58.4	6.7	80.53	47.03
Satakunta	25	1,219	48.6	5.4	83.05	40.36
Pori	9	723	51.7	6.8	83.99	43.41
Kanta-Häme	18	1,243	44.8	5.6	82.12	36.80
Hämeenlinna	8	737	45.7	7.4	93.31	42.62
Pirkanmaa	40	3,983	59.1	4.9	98.58	58.24
Tampere	24	2,955	66.4	8.0	99.75	66.28
Päijät-Häme	15	1,782	40.9	3.4	82.05	33.58
Lahti	6	700	46.1	5.3	88.73	40.90
Kymenlaakso	17	951	41.6	-9.1	84.44	35.13
Kouvola	7	443	39.5	-3.2	81.70	32.27
South Karelia	18	1,398	48.4	-6.8	94.70	45.80
Lappeenranta	8	750	60.6	1.4	88.99	53.94
Etelä-Savo	30	1,635	38.0	-2.2	71.34	27.11
Mikkeli	9	581	44.7	-5.6	75.44	33.75
Pohjois-Savo	30	2,338	46.7	-1.7	84.44	39.40
Kuopio	15	1,407	48.5	-3.7	87.90	42.66
North Karelia	22	1,209	50.0	-1.3	84.59	42.27
Joensuu	7	611	67.1	2.6	82.16	55.16
Central Finland	27	2,745	53.4	5.1	79.31	42.38
Jyväskylä	10	1,360	58.5	0.9	99.82	58.37
South Ostrobothnia	26	1,552	47.0	-4.6	73.98	34.81
Seinäjoki	8	625	48.8	-8.0	79.65	38.90
Ostrobothnia	22	1,217	53.4	4.1	87.38	46.67
Vaasa	8	793	59.5	5.6	89.96	53.53
Central Ostrobothnia	9	479	51.1	-0.2	80.13	40.98
Kokkola	5	362	58.1	-1.8	81.31	47.26
North Ostrobothnia	47	3,455	45.7	0.3	82.22	37.58
Kuusamo	10	754	20.9	-2.8	76.57	16.00
Oulu	12	1,589	63.1	3.2	87.13	54.98
Kainuu	19	1,722	46.3	-1.0	73.37	33.98
Kajaani	6	409	37.9	2.3	75.43	28.62
Sotkamo	6	1,080	55.8	-2.8	71.43	39.87
Lapland	82	5,446	21.9	-2.8	74.68	16.35
Rovaniemi	11	1,166	38.1	-1.8	73.11	27.85
Åland	14	767	26.5	-2.4
Maarianhamina	6	447	39.7	-3.5

1) RevPar = Average accommodation sales revenue per available room. Calculation formula: RevPar = Average room price * Occupancy rate. [...] Data too uncertain for presentation.

Appendix table 3.2. Hotel capacity and capacity utilization, January-October 2014

Region / municipality	Number of establishments	Number of bedrooms	Occupancy rate of bedrooms, %	Change compared to previous year, %-units	Room price, euros (incl. VAT 10 %)	¹⁾ RevPAR, euros (incl. VAT 10 %)
Whole country	627	51,125	52.3	0.3	91.68	47.96
Mainland Finland	613	50,382	52.5	0.3	91.66	48.08
Uusimaa	112	14,256	63.6	0.5	101.26	64.36
Espoo	11	1,181	55.7	-1.4	83.03	46.28
Helsinki	52	8,475	68.9	0.3	106.65	73.47
Vantaa	11	2,202	69.0	1.1	98.09	67.68
Varsinais-Suomi	38	3,028	55.1	2.2	83.15	45.80
Turku	18	2,060	58.9	2.2	85.13	50.11
Satakunta	25	1,260	43.8	-1.8	88.02	38.55
Pori	9	727	45.6	-2.9	88.70	40.42
Kanta-Häme	19	1,268	40.8	1.9	80.35	32.78
Hämeenlinna	8	736	39.3	0.1	91.87	36.06
Pirkanmaa	41	3,735	51.6	1.3	92.13	47.54
Tampere	24	2,749	56.2	1.2	93.86	52.71
Päijät-Häme	16	1,831	46.5	4.1	85.90	39.92
Lahti	6	722	46.0	0.3	87.95	40.44
Kymenlaakso	17	951	43.5	-3.4	85.62	37.25
Kouvola	7	439	42.1	-1.8	81.88	34.48
South Karelia	18	1,423	55.6	-1.0	96.08	53.43
Lappeenranta	8	770	63.9	1.8	89.70	57.31
Etelä-Savo	32	1,805	43.1	-1.9	80.05	34.49
Mikkeli	9	605	47.6	-4.0	82.00	39.00
Pohjois-Savo	30	2,338	49.0	-1.7	85.63	41.92
Kuopio	15	1,406	53.5	-2.8	89.74	48.05
North Karelia	22	1,227	48.9	0.7	84.94	41.56
Joensuu	7	630	59.7	4.4	84.84	50.64
Central Finland	28	2,832	51.9	2.0	87.14	45.18
Jyväskylä	11	1,444	55.9	3.1	94.44	52.77
South Ostrobothnia	26	1,530	48.3	-1.2	76.55	36.94
Seinäjoki	8	620	52.0	-1.1	83.16	43.25
Ostrobothnia	22	1,225	49.6	-0.6	88.60	43.92
Vaasa	8	803	55.4	0.4	92.08	51.01
Central Ostrobothnia	10	506	46.0	1.2	79.41	36.53
Kokkola	5	367	53.7	2.4	81.46	43.71
North Ostrobothnia	47	3,468	49.0	2.4	85.35	41.81
Kuusamo	10	760	36.2	0.6	93.09	33.66
Oulu	12	1,590	61.0	3.7	87.24	53.24
Kainuu	20	1,734	46.2	-3.7	78.49	36.23
Kajaani	6	409	37.4	-2.4	78.00	29.20
Sotkamo	6	1,080	53.7	-5.1	80.89	43.41
Lapland	91	5,965	42.8	-0.7	88.51	37.84
Rovaniemi	11	1,184	53.3	0.8	81.74	43.53
Åland	14	743	42.8	-0.9
Maarianhamina	6	430	55.4	0.9

1) RevPar = Average accommodation sales revenue per available room. Calculation formula: RevPar = Average room price * Occupancy rate. [...] Data too uncertain for presentation.

Appendix table 4.1. Nights spend in hotels, October 2014

Region / municipality	Nights spend, total	Change of nights spend, total, %	Nights spend, residents	Change of nights spend, residents, %	Nights spend, non-residents	Change of nights spend, non-residents, %
Whole country	1,217,402	1.1	937,603	1.5	279,799	-0.0
Mainland Finland	1,207,385	1.2	932,800	1.5	274,585	-0.1
Uusimaa	415,579	6.7	248,592	6.0	166,987	7.8
Espoo	28,284	-1.4	15,813	-5.3	12,471	4.1
Helsinki	270,000	11.4	146,938	11.4	123,062	11.3
Vantaa	72,335	-2.2	48,095	-2.0	24,240	-2.5
Varsinais-Suomi	77,073	3.1	65,056	1.1	12,017	15.8
Turku	54,695	5.7	45,556	4.5	9,139	12.1
Satakunta	25,604	9.4	21,642	8.6	3,962	13.9
Pori	15,958	16.9	13,726	15.2	2,232	29.1
Kanta-Häme	28,260	14.2	25,242	15.0	3,018	7.5
Hämeenlinna	16,407	10.7	14,305	9.4	2,102	20.0
Pirkanmaa	109,895	2.9	95,381	3.1	14,514	1.8
Tampere	84,624	9.4	70,941	10.4	13,683	4.6
Päijät-Häme	39,997	6.2	34,346	1.8	5,651	43.7
Lahti	13,857	10.1	10,511	6.7	3,346	22.4
Kymenlaakso	17,626	-23.1	13,008	-0.8	4,618	-52.8
Kouvola	7,815	-7.2	6,644	1.4	1,171	-37.3
South Karelia	40,340	-14.9	26,596	-5.4	13,744	-28.8
Lappeenranta	26,450	-8.7	19,588	3.0	6,862	-31.1
Etelä-Savo	30,086	-4.0	27,387	-0.3	2,699	-30.2
Mikkeli	11,746	-12.1	10,427	-8.7	1,319	-32.2
Pohjois-Savo	55,841	-2.9	52,341	-1.5	3,500	-19.7
Kuopio	34,081	-6.0	32,081	-5.1	2,000	-18.3
North Karelia	28,585	-5.4	24,207	-5.6	4,378	-4.3
Joensuu	17,036	-1.6	13,462	-1.7	3,574	-1.3
Central Finland	64,939	0.3	59,413	0.4	5,526	-1.3
Jyväskylä	36,878	1.6	33,201	2.3	3,677	-5.0
South Ostrobothnia	40,782	-1.1	39,179	-1.0	1,603	-4.1
Seinäjoki	13,179	-2.5	12,116	-2.2	1,063	-5.6
Ostrobothnia	27,759	13.7	21,963	14.3	5,796	11.6
Vaasa	20,253	14.2	15,631	17.3	4,622	4.8
Central Ostrobothnia	9,562	-6.0	8,714	-8.5	848	30.7
Kokkola	7,774	-3.2	7,127	-3.8	647	4.9
North Ostrobothnia	81,083	5.2	71,633	4.4	9,450	11.4
Kuusamo	12,407	-1.0	10,972	-8.7	1,435	177.6
Oulu	46,995	5.6	40,389	7.4	6,606	-3.8
Kainuu	60,807	-9.3	58,164	-7.6	2,643	-35.9
Kajaani	6,320	2.5	5,954	8.3	366	-45.2
Sotkamo	53,073	-10.2	50,895	-8.7	2,178	-35.3
Lapland	53,567	-14.5	39,936	-11.4	13,631	-22.7
Rovaniemi	19,807	-6.5	13,859	1.5	5,948	-20.8
Åland	10,017	-1.8	4,803	-8.5	5,214	5.2
Maarianhamina	8,440	-7.6	4,252	-14.3	4,188	0.5

Appendix table 4.2. Nights spend in hotels, January-October 2014

Region / municipality	Nights spend, total	Change of nights spend, total, %	Nights spend, residents	Change of nights spend, residents, %	Nights spend, non-residents	Change of nights spend, non-residents, %
Whole country	13,386,134	-2.0	9,418,625	-2.3	3,967,509	-1.4
Mainland Finland	13,200,439	-2.0	9,334,878	-2.3	3,865,561	-1.5
Uusimaa	4,103,015	0.3	2,173,718	0.1	1,929,297	0.5
Espoo	294,792	-4.8	164,025	-5.2	130,767	-4.3
Helsinki	2,647,166	0.7	1,226,288	2.6	1,420,878	-0.9
Vantaa	693,824	4.1	408,900	-0.7	284,924	11.9
Varsinais-Suomi	821,303	-1.6	657,076	-4.7	164,227	13.1
Turku	584,202	0.7	462,442	-2.2	121,760	13.4
Satakunta	242,624	-5.4	202,340	-5.5	40,284	-5.2
Pori	145,598	-4.0	126,359	-4.7	19,239	0.9
Kanta-Häme	265,779	4.2	234,449	5.8	31,330	-7.0
Hämeenlinna	145,760	-3.3	125,905	-2.6	19,855	-7.8
Pirkanmaa	959,096	-5.1	809,162	-6.1	149,934	0.8
Tampere	739,070	-0.9	605,359	-1.5	133,711	2.1
Päijät-Häme	406,959	-1.2	339,231	-4.2	67,728	17.6
Lahti	141,134	2.0	104,777	-0.6	36,357	10.3
Kymenlaakso	195,104	-9.7	136,246	1.9	58,858	-28.4
Kouvola	89,854	-1.1	69,366	0.5	20,488	-6.1
South Karelia	470,930	-9.6	241,356	-3.9	229,574	-14.9
Lappeenranta	277,674	-4.0	174,719	1.2	102,955	-11.6
Etelä-Savo	397,600	-3.6	329,560	-2.3	68,040	-9.7
Mikkeli	142,404	-8.9	111,983	-6.1	30,421	-18.2
Pohjois-Savo	595,923	-2.9	523,024	-2.8	72,899	-4.2
Kuopio	385,933	-4.5	337,290	-4.6	48,643	-3.2
North Karelia	307,999	-4.2	241,350	-9.4	66,649	20.8
Joensuu	164,121	-4.0	122,309	-9.7	41,812	18.0
Central Finland	783,999	-3.2	661,380	-4.1	122,619	2.0
Jyväskylä	375,884	5.1	316,085	5.0	59,799	5.3
South Ostrobothnia	420,598	-2.9	402,973	-3.1	17,625	1.7
Seinäjoki	140,669	3.2	130,496	2.7	10,173	9.5
Ostrobothnia	272,642	-1.2	214,573	-3.6	58,069	8.8
Vaasa	204,573	-1.1	157,791	-4.2	46,782	10.9
Central Ostrobothnia	101,777	2.0	91,855	0.2	9,922	22.8
Kokkola	83,623	6.3	75,476	5.1	8,147	19.0
North Ostrobothnia	900,157	3.9	743,800	4.3	156,357	1.9
Kuusamo	197,504	1.8	153,255	-1.5	44,249	15.4
Oulu	458,271	3.5	371,572	4.0	86,699	1.5
Kainuu	604,149	-7.2	549,745	-5.8	54,404	-18.7
Kajaani	69,760	-6.1	62,786	-5.3	6,974	-12.1
Sotkamo	499,450	-6.8	459,868	-5.1	39,582	-22.6
Lapland	1,350,785	-3.2	783,040	-1.7	567,745	-5.2
Rovaniemi	308,824	-3.2	141,242	-2.6	167,582	-3.8
Åland	185,695	-2.4	83,747	-6.3	101,948	1.0
Maarianhamina	125,730	-8.1	64,592	-12.5	61,138	-3.0

Appendix table 5.1. Visitor arrivals and nights spend by country of residence, October 2014

Country of residence	Visitor arrivals in all accommodation establishments	Nights spend in all accommodation establishments	Change of nights spend in all accommodation establishments, %	Nights spend in hotels	Change of nights spend in hotels, %
Total	787,238	1,378,247	0.6	1,217,402	1.1
Finland	625,199	1,069,310	1.3	937,603	1.5
Foreign countries	162,039	308,937	-1.8	279,799	-0.0
Sweden	21,974	34,120	8.5	32,426	13.2
Germany	11,521	24,153	4.7	22,041	3.4
Russia	32,646	53,877	-27.9	44,680	-26.2
United Kingdom	9,944	18,948	-0.6	18,059	-2.0
United States	5,790	12,508	8.3	12,239	9.3
Norway	6,096	11,196	13.0	10,381	10.4
Netherlands	3,880	7,348	-0.2	6,862	-2.2
Italy	2,509	5,807	-8.7	5,286	-6.4
France	3,535	8,239	16.5	7,416	17.5
Japan	7,276	13,250	-5.2	12,889	-4.5
Estonia	7,106	16,541	23.2	11,949	16.9
Switzerland	1,884	4,047	-11.2	3,753	-13.0
Spain	2,301	5,227	8.4	4,799	9.8
China	4,975	8,443	-18.0	8,227	-17.5

Appendix table 5.2. Visitor arrivals and nights spend by country of residence, January-October 2014

Country of residence	Visitor arrivals in all accommodation establishments	Nights spend in all accommodation establishments	Change of nights spend in all accommodation establishments, %	Nights spend in hotels	Change of nights spend in hotels, %
Total	9,250,864	17,180,977	-2.1	13,386,134	-2.0
Finland	6,903,518	12,342,978	-2.2	9,418,625	-2.3
Foreign countries	2,347,346	4,837,999	-1.8	3,967,509	-1.4
Sweden	265,881	480,188	0.5	360,191	4.5
Germany	225,622	444,032	-1.2	354,115	-1.5
Russia	537,612	1,168,337	-12.4	868,154	-15.8
United Kingdom	122,576	288,292	-4.7	252,469	-5.4
United States	83,590	182,347	9.3	175,519	9.2
Norway	81,324	156,463	1.5	121,354	4.1
Netherlands	63,610	141,329	0.1	109,941	-0.6
Italy	49,525	100,489	3.5	87,023	3.8
France	69,278	178,444	-2.1	153,346	-2.3
Japan	87,735	162,609	-6.4	157,200	-6.4
Estonia	71,431	167,383	8.1	118,411	8.5
Switzerland	52,183	115,636	0.9	85,818	1.2
Spain	39,691	84,106	4.4	72,567	8.7
China	76,272	111,974	1.4	108,032	0.9

Appendix table 6. Nights spend in all establishments, 2014

Month	Nights spend, total	Change of nights spend, total, %	Nights spend, residents	Change of nights spend, residents, %	Nights spend, non-residents	Change of nights spend, non-residents, %
Total	17,180,977	-2.1	12,342,978	-2.2	4,837,999	-1.8
January	1,383,726	1.2	766,476	1.2	617,250	1.1
February	1,424,102	-1.6	1,021,316	-0.4	402,786	-4.5
March	1,622,883	-6.6	1,167,372	-8.0	455,511	-2.6
April	1,357,461	1.0	1,056,064	0.7	301,397	2.1
May	1,346,645	-0.7	948,511	0.9	398,134	-4.3
June	2,082,249	-3.3	1,525,015	-5.4	557,234	2.7
July	2,937,703	-3.6	2,223,416	-3.4	714,287	-4.1
August	2,144,637	-1.5	1,447,375	-2.3	697,262	0.2
September	1,503,324	-2.7	1,118,123	-1.0	385,201	-7.3
October	1,378,247	0.6	1,069,310	1.3	308,937	-1.8

Suomen virallinen tilasto
Finlands officiella statistik
Official Statistics of Finland

Transport and Tourism 2014

Inquiries

Marjut Tuominen 029 551 3556

Kari Keränen 029 551 3208

Director in charge:

Hannele Orjala

liikenne.matkailu@stat.fi

www.stat.fi

Source: Accommodation Statistics. Statistics Finland