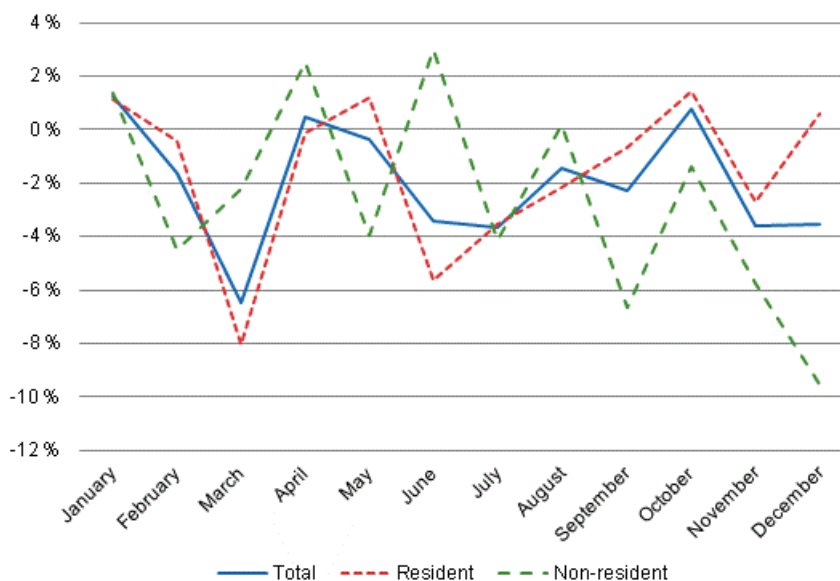


# Accommodation statistics 2014

## Demand for accommodation services declined by 2.3 per cent in 2014

The last four months of 2013 already indicated a petering out in the demand for accommodation services, and in the early part of 2014, the demand diminished slightly, deepening to a fall of 6.5 per cent in March. Not even the summer season managed to turn the demand for accommodation services around, and the latter part of the year was slightly negative, except for October, when the demand grew by under one per cent. In 2014, the demand for accommodation services decreased in total by 2.3 per cent. The foreign demand for accommodation services declined by 2.6 per cent and the domestic demand by 2.1 per cent compared with the previous year. In 2014, accommodation establishments in Finland recorded nearly 19.8 million overnight stays, of which domestic tourists accounted for 14.1 million and foreign tourists for 5.7 million. These figures are data from Statistics Finland's statistics on accommodation establishments and they have been collected from accommodation establishments with at least 20 beds or caravan pitches with electricity connection, and youth hostels.

Year-on-year changes in nights spent (%) by month 2014–2013



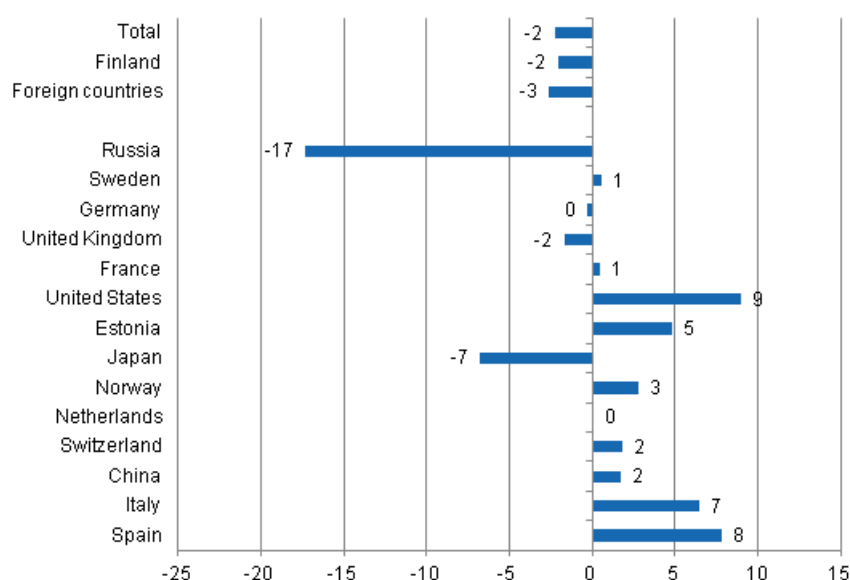
## Russians still formed the largest group of foreign visitors in accommodation establishments in 2014

Despite the steep fall in the number of overnight stays, Russians were the biggest group of foreign tourists in Finnish accommodation establishments in 2014. Altogether, 1.3 million overnight stays were recorded for Russians, which was 17.3 per cent down on the year before. Nevertheless, Russian visitors accounted for good 23 per cent of all overnight stays by foreign visitors. Swedish, German and British visitors came next. For Swedes and Germans, the number of overnight stays was good one-third of the overnight stays by Russians, or 0.5 million overnight stays for both. Overnight stays by Swedish visitors increased by nearly one per cent and those by Germans remained on level with the previous year. Overnight stays by British tourists in Finnish accommodation establishments made a slight downturn and nearly 450,000 overnight stays were recorded for them, which was 1.7 per cent down on 2013.

Overnight stays by French tourists numbered 215,000, which was almost the same as in 2013. Overnight stays by visitors from the United States and Estonia both increased to around 200,000. Overnight stays by visitors from the United States grew by 9.0 per cent and the biggest growth percentage was recorded for them in 2014 among the most important countries of inbound tourism into Finland. Overnight stays by Estonian tourists increased by 4.8 per cent from the previous year. In contrast, overnight stays by Japanese tourists made a downturn in summer 2014 and 192,000 overnight stays were recorded for them, which was 6.8 per cent fewer than in 2013.

Examined by continent, the biggest growth percentages came from Oceania, where Australia boosted overnight stays to a growth of over nine per cent, the number of overnight stays amounting to just 62,000, and from America, where growth amounted to 8.3 per cent. The United States was the engine behind the growth for America. The number of overnight stays by visitors from EU countries and Nordic countries was two per cent up on 2013. All in all, nearly 2.8 million overnight stays were recorded for tourists from EU countries. Among the largest EU countries, inbound tourism increased by seven to eight per cent from Italy and Spain in 2014. The number of overnight stays recorded from the Nordic countries was 814,000.

### Change in overnight stays 2014 / 2013, %



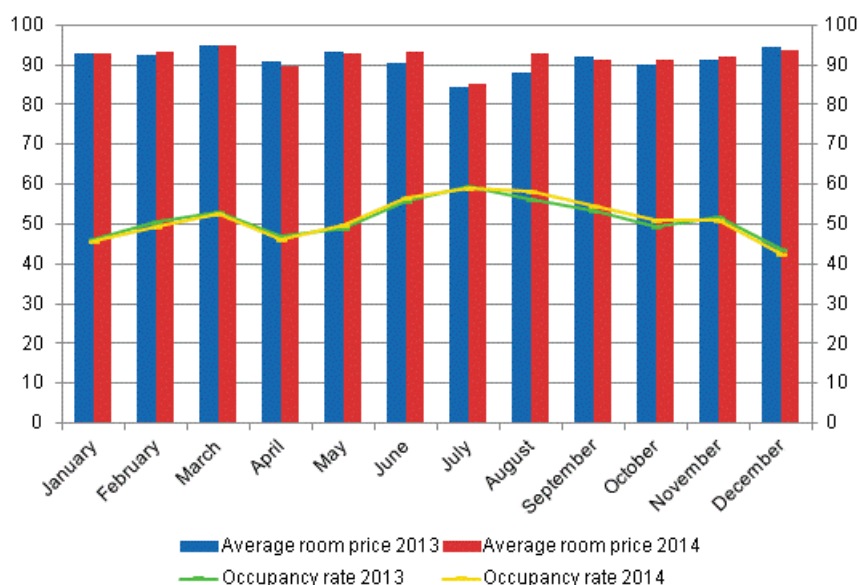
## Number of nights spent at hotels totalled 15.7 million in 2014

In 2014, the total number of nights spent in hotels was 15.7 million, which was 2.2 per cent lower than in 2013. Recorded nights spent by resident tourists in hotels numbered 10.9 million and by foreign tourists 4.7 million. Overnight stays decreased for both by 2.2 per cent from the previous year. Overnight stays at hotels covered 79 per cent of all overnight stays at accommodation establishments. The share of foreign

tourists of overnight stays in hotels was 30 per cent and 29 per cent of all overnight stays at accommodation establishments.

The occupancy rate of hotel rooms for the whole country was 51.5 per cent in 2014. One year earlier, it was 51.3 per cent. The average price of a hotel room has been growing since 2011, when the average price was EUR 88. In 2014, it was EUR 91.88.

### Hotel room occupancy rate and the monthly average price



### Regional development of overnight stays in 2014

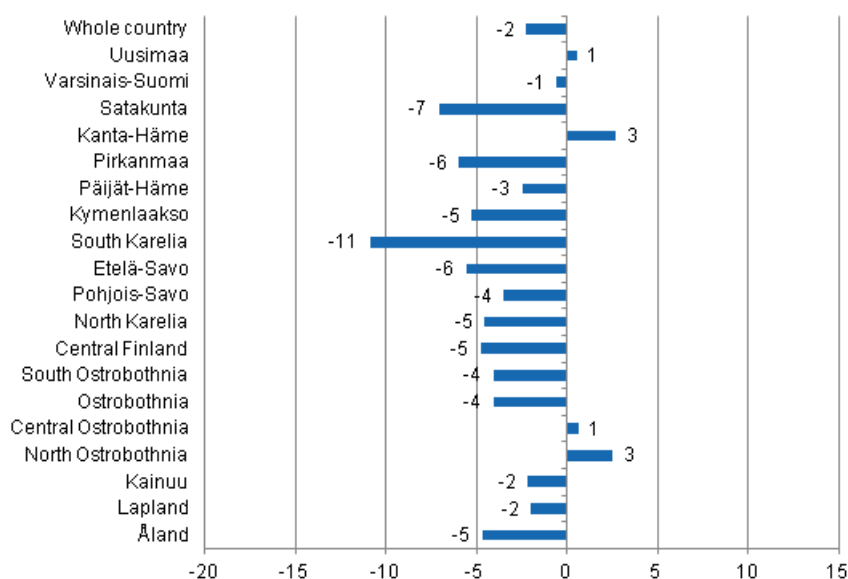
In 2014, overnight stays increased in only a few of the regions. The number of overnight stays in both Kanta-Häme and North Ostrobothnia grew by three per cent. In Kanta-Häme, the capacity of accommodation establishments also grew somewhat, while in North Ostrobothnia the capacity diminished. Uusimaa and Central Ostrobothnia increased the number of overnight stays by one per cent. In all other regions, the numbers of overnight stays went down last year. The biggest drop in overnight stays, 10.9 per cent, was recorded in the region of South Karelia, where the capacity of accommodation establishments grew somewhat. Overnight stays in Satakunta diminished by 7.1 per cent and decreases of six per cent were recorded in both Pirkanmaa and Etelä-Savo.

In absolute numbers, overnight stays in accommodation establishments increased most in North Ostrobothnia, where nearly 41,000 more overnight stays were recorded, and in Uusimaa, where overnight stays increased by close on 24,000 from 2013.

The share of overnight stays by foreign tourists of all overnight stays was 47 per cent in South Karelia, 46 per cent in Uusimaa, and 43 per cent in Lapland. These regions also recorded most overnight stays by Russians. In Uusimaa, 353,000 overnight stays were recorded for Russians, in South Karelia 270,000 and in Lapland nearly 117,000.

In Kymenlaakso, the share of foreign tourists in all overnight stays was 30 per cent. The share was 25 per cent in Etelä-Savo and 21 per cent in North Karelia. In other regions of the Finnish mainland, at most one night in five was spent by a foreign visitor.

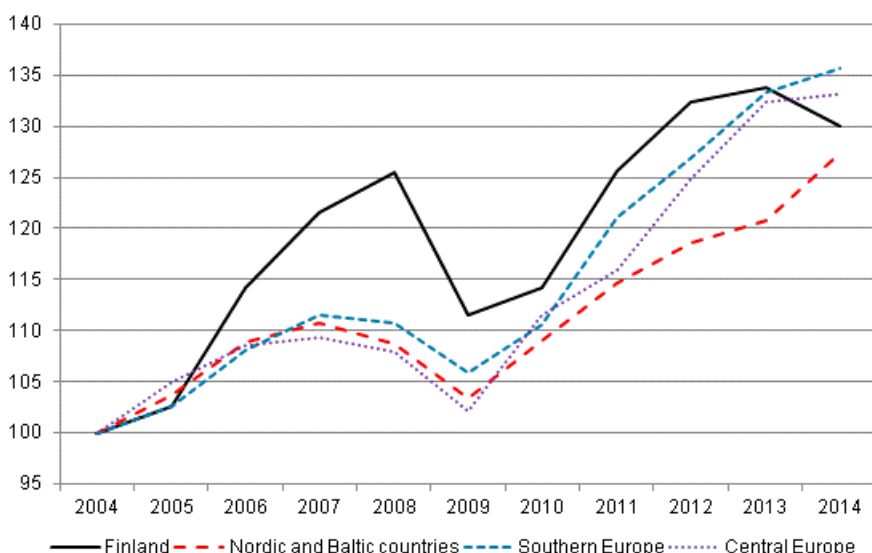
### Change in overnight stays by region 2014/2013,%



### Overnight stays of foreigners growing in Europe in 2014

In 2014, overnight stays in Finland by foreign visitors declined by 2.6 per cent, although at the same time, a growth of 5.4 per cent in overnight stays by foreigners was experienced in our neighbouring areas, the Nordic countries and the Baltic countries. The growth was more moderate in the rest of Europe: In Southern Europe, up by 1.9 per cent and in Central Europe by 0.7 per cent. From 2004 to 2012, the growth of overnight stays by foreigners was faster in Finland than the European average, but in 2013 the growth slowed down.

### Nights spent by non-residents in Europe (2004 = 100)



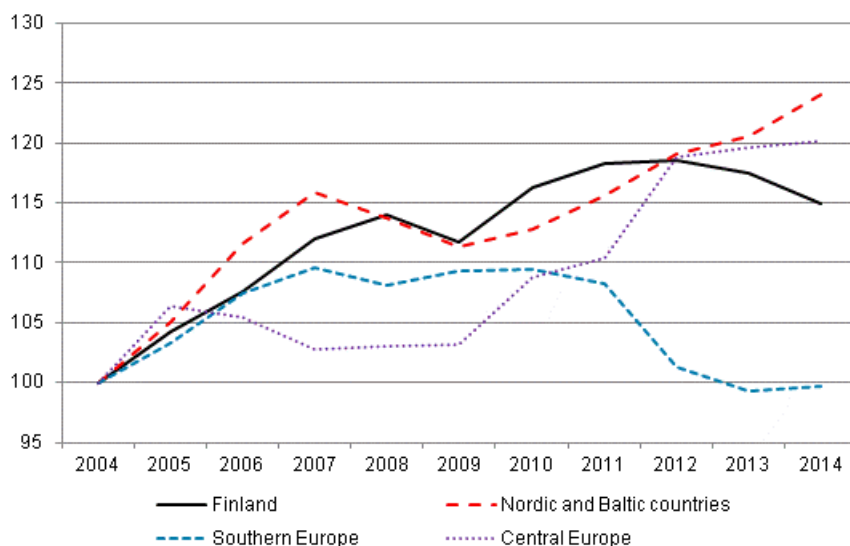
### Overnight stays of domestic visitors grew weakly in Europe in 2014

The slight decline in overnight stays by domestic visitors in Finland, which started in 2013, steepened to 2.1 per cent in 2014. In the rest of Europe, overnight stays by domestic tourists, in turn, remained on level with the previous year, growing by 0.6 per cent. However, a growth of 2.9 per cent was recorded in domestic overnight stays in the Nordic and Baltic countries. Domestic overnight stays in Central Europe have been more or less on the same level for the last three years. Southern Europe still has not recovered

from the steep drop in overnight stays by domestic tourists in 2012 (-6.5 per cent). There domestic stays have frozen to the level preceding 2004.

The information on overnight stays in other European countries is based on monthly data on the use of capacity at European accommodation establishments collected by Eurostat.

### Nights spent by residents in Europe (2004 = 100)



### The capacity of accommodation establishments decreased in 2014

In 2014, Statistics Finland’s register of accommodation establishments has been updated with new and closed establishments and the industry data of accommodation establishments have been revised. The number of accommodation establishments contained in the statistics went down by 35 in 2014. The room capacity decreased by 751 rooms and the number of beds by 2,270 beds. In absolute numbers, the biggest changes concerned guest houses and hotels.

In 2014, the statistics covered a total of 1,408 accommodation establishments; 655 hotels, 130 guest houses, 335 holiday villages, 243 camping sites and 45 youth hostels. Holiday villages of hotel calibre are included in hotels. The accommodation establishments had 65,498 rooms (or cottages) with a total of 160,470 beds. In addition to the room and bed capacity, the accommodation establishments had 20,854 caravan pitches with electricity connection of which 16,275 were located at camping sites.

When the capacity of accommodation establishments is viewed according to the number of rooms, the statistics contained 1,048 establishments with fewer than 50 rooms and 360 establishments with at least 50 rooms in 2014. Measured by bed capacity, there were 1,220 establishments with fewer than one hundred beds and 188 establishments with at least one hundred beds.

In 2014, there were 1,074 accommodation establishments that were open year round and 334 establishments that were open part of the year; these were mostly camping sites and holiday villages.

# Contents

## Tables

### Appendix tables

Appendix table 1. Capacity and its utilization in 2014.....	8
Appendix table 2. Nights spend in all establishments in 2014.....	9
Appendix table 3. Hotel capacity and capacity utilization in 2014.....	10
Appendix table 4. Nights spend in hotels in 2014.....	11
Appendix table 5. Visitor arrivals and nights spend by country of residence in 2014.....	12
Appendix table 6. Nights spend in all establishments by month in 2014.....	13
Appendix table 7.1. Nights spent by non-residents and annual change (%) in all establishments in 2014.....	14
Appendix table 7.2. Nights spent by non-residents and annual change (%) in all establishments in 2014.....	15
Appendix table 8.1. Nights spent by non-residents and annual change (%) in hotels in 2014.....	16
Appendix table 8.2. Nights spent by non-residents and annual change (%) in hotels in 2014.....	17
Appendix table 9.1. Capacity of accommodation establishments and capacity utilization by type of establishment in 2014.....	18
Appendix table 9.2. Capacity of accommodation establishments and capacity utilization by type of establishment, May-August 2014.....	18
Appendix table 10.1. Capacity of accommodation establishments by type of establishment in 2014.....	18
Appendix table 10.2. Capacity of accommodation establishments by opening season in 2014.....	19
Appendix table 10.3. Capacity of accommodation establishments by number of bed-places in 2014.....	19
Appendix table 10.4. Capacity of accommodation establishments by number of rooms in 2014.....	20

## Appendix tables

**Appendix table 1. Capacity and its utilization in 2014**

Region	Number of establishments on average	Number of bedrooms on average	Occupancy rate of bedrooms, %	Change of the occupancy rate compared to previous year, %-units	<sup>1)</sup> Average price of nights spend, in euros (incl. VAT 10 %)
Whole country	1,186	60,706	47.8	0.1	51.41
Mainland Finland	1,140	59,511	48.1	0.0	51.53
Uusimaa	140	14,700	61.9	0.2	65.99
Espoo	.	.	.	.	.
Helsinki	59	8,609	67.9	0.1	69.95
Vantaa	11	2,207	67.6	0.0	65.87
Varsinais-Suomi	72	3,756	48.9	1.5	47.52
Turku	23	2,288	54.7	1.0	50.46
Satakunta	43	1,582	38.4	-1.8	52.40
Pori	14	812	43.3	-1.5	50.44
Kanta-Häme	33	1,545	35.9	0.0	46.08
Hämeenlinna	13	819	36.6	-0.5	53.51
Pirkanmaa	73	4,478	47.8	0.2	52.11
Tampere	.	.	.	.	.
Päijät-Häme	37	2,043	42.2	2.4	48.26
Lahti	10	747	45.6	1.0	57.77
Kymenlaakso	30	1,164	41.5	-2.3	46.80
Kouvola	13	545	40.0	0.1	41.73
South Karelia	39	1,860	49.2	-2.1	48.07
Lappeenranta	14	1,015	56.2	-0.3	52.44
Etelä-Savo	87	2,562	38.2	-2.0	37.15
Mikkeli	20	736	44.0	-3.2	43.00
Pohjois-Savo	53	2,654	46.3	-0.9	45.65
Kuopio	24	1,563	51.3	-1.6	47.85
North Karelia	53	1,572	43.2	1.4	45.24
Joensuu	.	.	.	.	.
Central Finland	52	3,211	47.0	1.9	50.66
Jyväskylä	15	1,527	52.3	2.3	67.81
South Ostrobothnia	50	1,849	41.2	-0.6	39.64
Seinäjoki	.	.	.	.	.
Ostrobothnia	33	1,374	45.9	0.3	50.93
Vaasa	9	813	54.9	1.4	55.95
Central Ostrobothnia	17	584	42.5	0.3	49.95
Kokkola	.	.	.	.	.
North Ostrobothnia	101	4,488	44.7	1.4	40.33
Kuusamo	37	1,299	36.2	0.3	33.96
Oulu	15	1,669	59.2	2.8	55.45
Kainuu	46	2,254	41.2	-2.3	37.25
Kajaani	7	433	35.0	0.1	52.33
Lapland	181	7,835	40.2	-0.3	43.84
Rovaniemi	.	.	.	.	.
Åland	47	1,194	33.4	1.6	..
Maarianhamina	11	521	47.6	-0.6	..

1) [...] Data too uncertain for presentation.



**Appendix table 2. Nights spend in all establishments in 2014**

Region	Nights spend, total	Change of nights spend, total, %	Nights spend, residents	Change of nights spend, residents, %	Nights spend, non-residents	Change of nights spend, non-residents, %
Whole country	19,785,412	-2.3	14,075,072	-2.1	5,710,340	-2.6
Mainland Finland	19,396,426	-2.2	13,923,482	-2.1	5,472,944	-2.5
Uusimaa	5,127,059	0.5	2,778,687	0.2	2,348,372	0.7
Espoo	.	.	.	.	.	.
Helsinki	3,298,841	1.1	1,561,792	2.6	1,737,049	-0.3
Vantaa	812,911	2.8	482,262	-1.5	330,649	9.7
Varsinais-Suomi	1,179,261	-0.6	950,478	-2.4	228,783	8.1
Turku	741,271	1.1	584,493	-0.5	156,778	7.5
Satakunta	392,702	-7.1	337,770	-7.2	54,932	-6.6
Pori	219,775	-5.6	194,441	-5.9	25,334	-3.4
Kanta-Häme	374,434	2.7	333,148	3.3	41,286	-2.1
Hämeenlinna	201,560	-3.4	177,975	-2.4	23,585	-10.4
Pirkanmaa	1,388,649	-6.0	1,175,503	-6.0	213,146	-6.4
Tampere	.	.	.	.	.	.
Päijät-Häme	581,746	-2.5	486,748	-4.2	94,998	7.0
Lahti	180,989	0.1	133,902	-0.7	47,087	2.4
Kymenlaakso	348,649	-5.3	244,043	3.2	104,606	-20.5
Kouvola	144,993	-3.7	115,492	-1.1	29,501	-12.6
South Karelia	674,060	-10.9	353,930	-2.1	320,130	-18.9
Lappeenranta	401,631	-5.5	249,364	3.6	152,267	-17.3
Etelä-Savo	761,617	-5.6	568,972	-4.2	192,645	-9.7
Mikkeli	219,088	-12.8	166,477	-10.7	52,611	-18.7
Pohjois-Savo	834,933	-3.5	717,300	-3.2	117,633	-5.6
Kuopio	537,360	-5.9	460,963	-5.5	76,397	-8.0
North Karelia	486,594	-4.6	383,263	-8.2	103,331	11.7
Joensuu	.	.	.	.	.	.
Central Finland	1,043,782	-4.8	890,822	-5.3	152,960	-2.0
Jyväskylä	444,679	3.4	376,858	3.6	67,821	2.7
South Ostrobothnia	662,610	-4.1	636,647	-3.6	25,963	-15.6
Seinäjoki	.	.	.	.	.	.
Ostrobothnia	403,443	-4.1	326,195	-6.2	77,248	5.8
Vaasa	263,326	0.9	203,372	-1.8	59,954	11.4
Central Ostrobothnia	167,144	0.6	148,058	-1.0	19,086	14.9
Kokkola	.	.	.	.	.	.
North Ostrobothnia	1,644,529	2.5	1,364,091	3.6	280,438	-2.2
Kuusamo	488,520	4.2	373,742	4.9	114,778	2.0
Oulu	606,060	1.4	485,066	2.3	120,994	-2.0
Kainuu	970,953	-2.2	875,526	-1.2	95,427	-10.6
Kajaani	81,323	-6.3	73,217	-5.6	8,106	-11.7
Lapland	2,354,261	-2.0	1,352,301	-1.7	1,001,960	-2.4
Rovaniemi	.	.	.	.	.	.
Åland	388,986	-4.7	151,590	-6.4	237,396	-3.6
Maarianhamina	178,133	-4.3	87,170	-10.3	90,963	2.3

**Appendix table 3. Hotel capacity and capacity utilization in 2014**

Region / municipality	Number of establishments on average	Number of bedrooms on average	Occupancy rate of bedrooms, %	Change compared to previous year, %-units	Room price, euros (incl. VAT 10 %)	<sup>1)</sup> RevPAR, euros (incl. VAT 10 %)
Whole country	624	50,946	51.5	0.2	91.88	47.32
Mainland Finland	610	50,236	51.7	0.2	91.87	47.45
Uusimaa	112	14,264	62.5	-0.0	101.41	63.38
Espoo	11	1,183	54.7	-1.4	83.41	45.64
Helsinki	52	8,473	68.0	-0.1	106.61	72.47
Vantaa	11	2,207	67.6	0.0	98.86	66.82
Varsinais-Suomi	38	3,016	53.7	2.2	83.12	44.62
Turku	18	2,055	57.2	2.1	85.19	48.69
Satakunta	25	1,221	43.7	-0.8	87.29	38.12
Pori	9	695	46.2	-1.0	87.50	40.38
Kanta-Häme	19	1,265	40.1	1.8	79.59	31.95
Hämeenlinna	8	737	38.2	-0.4	91.55	34.95
Pirkanmaa	41	3,780	50.5	0.9	92.38	46.69
Tampere	25	2,810	54.9	0.6	94.10	51.69
Päijät-Häme	16	1,810	44.7	3.3	85.21	38.07
Lahti	6	700	45.6	0.8	87.59	39.96
Kymenlaakso	17	950	43.0	-3.9	85.34	36.72
Kouvola	7	438	41.5	-2.6	81.88	33.95
South Karelia	18	1,413	53.9	-1.5	95.51	51.47
Lappeenranta	8	767	61.9	1.7	89.36	55.31
Etelä-Savo	31	1,760	41.9	-2.0	79.11	33.15
Mikkeli	8	579	47.3	-2.8	81.43	38.48
Pohjois-Savo	30	2,337	47.7	-1.7	85.55	40.77
Kuopio	15	1,405	52.4	-2.5	89.35	46.80
North Karelia	22	1,224	47.9	0.6	85.02	40.70
Joensuu	7	627	59.3	4.4	85.03	50.43
Central Finland	28	2,775	50.7	2.3	86.59	43.89
Jyväskylä	11	1,428	54.6	2.5	93.89	51.31
South Ostrobothnia	25	1,508	47.2	-1.3	76.14	35.91
Seinäjoki	8	621	50.5	-2.0	82.94	41.85
Ostrobothnia	22	1,227	48.9	0.3	88.06	43.07
Vaasa	8	802	55.0	1.4	91.03	50.04
Central Ostrobothnia	10	497	45.1	1.0	79.90	36.07
Kokkola	5	366	52.1	1.5	81.79	42.58
North Ostrobothnia	48	3,463	48.6	1.8	85.48	41.52
Kuusamo	11	763	37.0	-0.5	95.26	35.26
Oulu	12	1,590	60.3	2.9	86.90	52.38
Kainuu	20	1,738	45.4	-3.0	79.21	35.94
Kajaani	6	409	36.5	-1.7	77.99	28.47
Lapland	91	5,990	43.7	-0.4	91.10	39.82
Rovaniemi	11	1,198	55.3	0.5	87.64	48.47
Åland	14	710	40.5	-0.8	..	..
Maarianhamina	6	415	52.7	0.4	..	..

1) RevPar = Average accommodation sales revenue per available room. Calculation formula: RevPar = Average room price

\*Occupancy rate. [...] Data too uncertain for presentation.

**Appendix table 4. Nights spend in hotels in 2014**

Region / municipality	Nights spend, total	Change of nights spend, total, %	Nights spend, residents	Change of nights spend, residents, %	Nights spend, non-residents	Change of nights spend, non-residents, %
Whole country	15,660,777	-2.2	10,928,168	-2.2	4,732,609	-2.2
Mainland Finland	15,464,063	-2.2	10,839,259	-2.1	4,624,804	-2.3
Uusimaa	4,794,748	-0.0	2,571,948	-0.0	2,222,800	0.0
Espoo	340,140	-5.4	191,872	-4.7	148,268	-6.2
Helsinki	3,107,710	0.6	1,468,891	2.5	1,638,819	-1.0
Vantaa	812,911	2.8	482,262	-1.5	330,649	9.7
Varsinais-Suomi	943,406	-1.8	758,723	-4.5	184,683	10.8
Turku	670,894	0.8	534,801	-1.6	136,093	11.3
Satakunta	274,660	-6.4	227,921	-6.9	46,739	-4.2
Pori	165,854	-4.7	143,033	-6.0	22,821	4.4
Kanta-Häme	307,828	4.0	270,772	5.1	37,056	-3.8
Hämeenlinna	168,239	-4.0	146,234	-2.8	22,005	-11.5
Pirkanmaa	1,134,930	-3.4	958,153	-4.6	176,777	3.4
Tampere	883,712	1.0	725,141	0.1	158,571	5.2
Päijät-Häme	464,507	-2.7	389,337	-5.0	75,170	11.0
Lahti	160,658	-0.4	119,468	-2.5	41,190	6.1
Kymenlaakso	226,628	-11.1	158,296	0.2	68,332	-29.6
Kouvola	103,841	-3.6	80,734	-1.3	23,107	-10.7
South Karelia	537,592	-11.7	277,270	-3.1	260,322	-19.4
Lappeenranta	318,685	-6.2	201,762	1.9	116,923	-17.6
Etelä-Savo	448,613	-4.2	374,860	-1.8	73,753	-14.6
Mikkeli	160,942	-9.7	127,953	-5.5	32,989	-23.0
Pohjois-Savo	688,195	-2.8	607,749	-2.1	80,446	-7.7
Kuopio	446,155	-4.2	392,600	-3.8	53,555	-6.7
North Karelia	354,476	-4.3	278,800	-8.7	75,676	15.9
Joensuu	192,854	-3.1	144,259	-8.3	48,595	16.2
Central Finland	888,338	-4.3	748,195	-4.9	140,143	-1.2
Jyväskylä	430,492	3.9	363,964	4.1	66,528	2.7
South Ostrobothnia	481,485	-3.4	461,775	-3.5	19,710	-0.5
Seinäjoki	162,840	2.1	151,346	1.8	11,494	6.3
Ostrobothnia	317,202	0.7	249,161	-1.3	68,041	9.2
Vaasa	237,597	0.4	182,244	-2.7	55,353	11.7
Central Ostrobothnia	116,642	0.8	105,528	-1.0	11,114	22.2
Kokkola	95,709	4.7	86,754	3.7	8,955	15.5
North Ostrobothnia	1,067,388	3.4	867,765	4.1	199,623	0.6
Kuusamo	247,566	1.2	181,245	-0.1	66,321	5.1
Oulu	537,585	2.7	436,022	3.1	101,563	1.3
Kainuu	708,928	-6.3	642,855	-4.8	66,073	-19.0
Kajaani	80,110	-5.1	72,020	-4.4	8,090	-10.7
Lapland	1,708,497	-2.4	890,151	-1.8	818,346	-3.2
Rovaniemi	403,824	-2.0	169,819	-3.4	234,005	-1.0
Åland	196,714	-2.1	88,909	-5.6	107,805	1.1
Maarianhamina	135,023	-7.2	69,230	-11.3	65,793	-2.5

**Appendix table 5. Visitor arrivals and nights spend by country of residence in 2014**

Country of residence	Visitor arrivals in all accommodation establishments	Nights spend in all accommodation establishments	Change of nights spend in all accommodation establishments, %	Nights spend in hotels	Change of nights spend in hotels, %
Total	10,659,946	19,785,412	-2.3	15,660,777	-2.2
Finland	7,928,746	14,075,072	-2.1	10,928,168	-2.2
Foreign countries	2,731,200	5,710,340	-2.6	4,732,609	-2.2
Russia	615,116	1,339,526	-17.3	1,000,356	-20.4
Sweden	299,589	534,358	0.6	412,867	4.5
Germany	248,308	500,057	-0.3	403,901	-0.9
United Kingdom	180,562	446,792	-1.7	395,393	-2.0
France	81,880	215,393	0.5	187,391	0.9
United States	93,469	204,036	9.0	196,165	8.7
Estonia	83,278	196,277	4.8	140,036	6.3
Japan	102,154	192,007	-6.8	185,170	-7.1
Norway	92,415	178,956	2.8	142,018	5.1
Netherlands	71,567	158,801	0.1	124,445	-0.5
Switzerland	57,685	131,076	1.8	98,099	1.8
China	85,388	128,685	1.7	123,440	1.0
Italy	58,322	123,145	6.5	107,662	6.9
Spain	46,950	104,451	7.8	90,449	10.6
Denmark	51,844	92,197	10.9	86,231	12.2
Poland	32,686	79,078	19.5	67,390	22.2
Australia	26,959	56,529	9.4	52,128	9.9
Austria	23,153	53,174	0.9	44,520	5.7
Belgium	24,909	52,600	6.6	46,674	5.0
India	16,399	52,383	18.2	50,587	18.8
Latvia	22,081	47,223	10.2	35,298	17.0
Canada	15,410	35,873	6.8	33,877	7.6
Czech	14,153	33,810	8.3	28,034	13.4
Israel	12,128	30,560	18.9	27,352	20.2
South Korea	15,769	29,223	-0.2	26,209	-1.7
Lithuania	14,100	29,038	11.6	20,354	5.9
Thailand	9,762	22,723	-42.2	13,900	28.3
Turkey	9,480	21,176	15.5	20,237	18.3
Brazil	9,543	21,052	21.9	19,603	23.1

**Appendix table 6. Nights spend in all establishments by month in 2014**

Month	Nights spend, total	Change of nights spend, total, %	Nights spend, residents	Change of nights spend, residents, %	Nights spend, non-residents	Change of nights spend, non-residents, %
Total	19,785,412	-2.3	14,075,072	-2.1	5,710,340	-2.6
January	1,384,997	1.2	766,132	1.1	618,865	1.4
February	1,424,588	-1.6	1,021,566	-0.4	403,022	-4.5
March	1,624,382	-6.5	1,167,305	-8.0	457,077	-2.2
April	1,349,850	0.5	1,047,168	-0.1	302,682	2.5
May	1,350,747	-0.4	951,031	1.2	399,716	-3.9
June	2,080,012	-3.4	1,520,903	-5.6	559,109	3.0
July	2,935,354	-3.7	2,221,129	-3.5	714,225	-4.2
August	2,145,828	-1.4	1,448,704	-2.2	697,124	0.2
September	1,509,513	-2.3	1,121,620	-0.7	387,893	-6.7
October	1,381,221	0.8	1,071,204	1.4	310,017	-1.4
November	1,300,287	-3.6	940,025	-2.7	360,262	-5.8
December	1,298,633	-3.5	798,285	0.6	500,348	-9.5
Spring (January-April)	5,783,817	-1.9	4,002,171	-2.4	1,781,646	-0.8
Summer (May-August)	8,511,941	-2.6	6,141,767	-3.0	2,370,174	-1.2
Autumn (September-December)	5,489,654	-2.2	3,931,134	-0.4	1,558,520	-6.4

**Appendix table 7.1. Nights spent by non-residents and annual change (%) in all establishments in 2014**

Region	Foreign countries		Russia		Sweden		Germany		United Kingdom		France	
Whole country	5,710,340	-2.6	1,339,526	-17.3	534,358	0.6	500,057	-0.3	446,792	-1.7	215,393	0.5
Mainland Finland	5,472,944	-2.5	1,334,422	-17.4	347,960	3.6	487,758	-0.3	445,596	-1.7	214,358	0.5
Uusimaa	2,348,372	0.7	353,048	-19.6	170,994	5.6	193,310	0.7	165,186	2.3	63,776	-1.3
Espoo	.	.	.	.	.	.	.	.	.	.	.	.
Helsinki	1,737,049	-0.3	244,739	-21.1	123,702	3.3	149,486	-0.2	130,451	4.9	49,506	-5.1
Vantaa	330,649	9.7	36,258	-15.8	24,376	18.7	19,347	7.5	19,875	-7.7	6,936	10.6
Varsinais-Suomi	228,783	8.1	30,238	-5.7	36,800	-3.1	21,437	-0.2	8,672	-7.6	6,399	-7.2
Turku	156,778	7.5	18,969	-13.8	26,495	1.3	16,096	19.9	7,151	-7.1	4,661	-11.9
Satakunta	54,932	-6.6	3,869	-9.1	6,471	-5.4	11,366	-2.9	3,356	-16.5	3,122	15.5
Pori	25,334	-3.4	1,782	-13.5	2,550	-1.7	4,740	2.5	1,339	-18.4	1,239	52.6
Kanta-Häme	41,286	-2.1	7,572	-19.6	3,679	4.8	3,150	-44.8	1,733	48.2	848	8.6
Hämeenlinna	23,585	-10.4	3,878	-25.9	2,113	-2.9	1,828	-29.6	1,237	58.0	559	21.3
Pirkanmaa	213,146	-6.4	27,226	-21.8	17,547	-3.9	21,100	0.8	13,023	8.1	7,837	-0.6
Tampere	.	.	.	.	.	.	.	.	.	.	.	.
Päijät-Häme	94,998	7.0	41,671	-7.0	4,989	24.2	7,654	0.3	1,923	-2.5	1,680	49.9
Lahti	47,087	2.4	13,308	-19.5	3,460	27.3	5,408	15.4	1,243	-22.5	963	20.4
Kymenlaakso	104,606	-20.5	55,516	-22.9	3,465	4.7	3,506	-6.9	19,262	-32.9	1,624	41.2
Kouvola	29,501	-12.6	18,556	-21.0	1,357	-10.5	1,501	-11.2	912	11.9	707	58.9
South Karelia	320,130	-18.9	269,705	-23.5	5,006	31.4	6,990	30.1	1,492	-0.5	1,841	-0.9
Lappeenranta	152,267	-17.3	121,183	-23.7	3,003	45.7	4,752	51.0	1,102	5.1	1,305	15.8
Etelä-Savo	192,645	-9.7	134,224	-9.7	3,101	-14.6	17,580	9.7	3,196	65.4	2,910	24.8
Mikkeli	52,611	-18.7	37,341	-16.3	1,116	-12.7	2,710	5.6	585	8.9	839	65.2
Pohjois-Savo	117,633	-5.6	49,446	-12.5	4,978	9.5	14,470	-8.3	2,644	-11.6	2,074	8.6
Kuopio	76,397	-8.0	32,977	-17.0	2,799	9.6	8,858	-18.7	2,164	-1.1	1,376	5.4
North Karelia	103,331	11.7	51,929	-10.0	3,593	21.5	8,898	40.6	3,433	70.2	2,105	33.7
Joensuu	.	.	.	.	.	.	.	.	.	.	.	.
Central Finland	152,960	-2.0	44,648	-16.9	7,709	2.4	15,825	-0.5	5,994	8.9	12,711	63.0
Jyväskylä	67,821	2.7	10,198	-16.8	4,725	8.3	7,703	-4.0	4,999	7.7	3,212	1.2
South Ostrobothnia	25,963	-15.6	3,070	-18.2	2,516	-16.9	3,271	33.3	533	-34.7	304	-36.4
Seinäjoki	.	.	.	.	.	.	.	.	.	.	.	.
Ostrobothnia	77,248	5.8	2,987	-19.4	17,170	3.5	6,561	19.5	3,719	15.9	1,888	0.3
Vaasa	.	.	.	.	.	.	.	.	.	.	.	.
Central Ostrobothnia	19,086	14.9	1,680	-15.6	2,786	20.1	3,374	22.9	488	27.4	275	-37.9
Kokkola	14,694	6.2	1,055	-25.2	2,148	4.8	2,838	20.1	414	14.7	227	-43.0
North Ostrobothnia	280,438	-2.2	84,941	0.9	17,723	-5.4	26,683	1.3	25,795	-10.2	6,269	-4.2
Kuusamo	114,778	2.0	64,610	8.0	1,540	-10.2	6,082	-6.1	15,392	-10.4	1,793	29.9
Oulu	120,994	-2.0	16,714	-14.4	13,614	-5.4	12,135	7.4	5,706	4.4	3,026	-17.0
Kainuu	95,427	-10.6	55,820	-14.7	1,698	-35.8	4,612	-2.8	2,098	27.2	5,865	-0.8
Kajaani	.	.	.	.	.	.	.	.	.	.	.	.
Lapland	1,001,960	-2.4	116,832	-22.3	37,735	10.1	117,971	-5.5	183,049	-1.5	92,830	-4.7
Rovaniemi	268,015	-1.8	46,337	-29.0	6,549	-14.3	23,027	-1.4	22,833	13.2	20,343	-6.4
Åland	237,396	-3.6	5,104	-8.8	186,398	-4.7	12,299	-0.9	1,196	-10.3	1,035	6.3
Maarianhamina	90,963	2.3	2,541	16.2	72,887	1.9	3,486	17.2	718	-22.8	425	-19.5

**Appendix table 7.2. Nights spent by non-residents and annual change (%) in all establishments in 2014**

Region	United States		Estonia		Japan		Norway		Netherlands		Switzerland	
Whole country	204,036	9.0	196,277	4.8	192,007	-6.8	178,956	2.8	158,801	0.1	131,076	1.8
Mainland Finland	203,132	9.1	189,395	4.5	191,922	-6.8	175,589	3.0	157,553	0.2	129,129	1.6
Uusimaa	146,828	7.1	71,437	-0.7	125,408	-1.8	63,512	6.9	60,178	5.7	49,673	1.9
Espoo	.	.	.	.	.	.	.	.	.	.	.	.
Helsinki	121,509	9.9	37,713	-8.3	108,043	0.1	51,159	8.0	44,512	6.8	40,040	1.3
Vantaa	16,882	-7.6	8,786	3.7	15,297	-14.1	6,481	-4.2	7,518	26.1	5,603	-0.4
Varsinais-Suomi	8,433	35.6	21,560	55.4	5,933	19.8	6,334	-23.7	5,705	14.8	3,874	-6.9
Turku	7,437	43.3	11,406	75.3	2,485	13.0	4,713	-20.1	4,738	19.6	2,949	-7.8
Satakunta	2,696	-13.6	3,002	-34.9	719	14.5	1,557	-5.4	1,104	-17.4	868	54.7
Pori	1,244	-24.1	1,308	-41.8	283	258.2	569	30.2	452	-19.9	327	6.9
Kanta-Häme	804	-24.9	2,391	3.1	444	75.5	902	-14.1	691	2.4	594	41.1
Hämeenlinna	607	-11.5	1,328	29.6	425	113.6	589	-15.1	415	5.6	375	34.4
Pirkanmaa	10,732	40.5	13,445	1.8	4,149	10.8	4,476	-7.7	4,848	11.9	3,646	-3.9
Tampere	.	.	.	.	.	.	.	.	.	.	.	.
Päijät-Häme	987	-27.4	5,512	16.0	659	43.0	1,351	-8.0	1,390	15.8	1,623	-10.1
Lahti	705	-27.3	2,146	-24.8	562	55.7	925	-20.0	976	19.9	1,078	13.8
Kymenlaakso	1,049	9.5	3,742	-16.9	287	3.6	673	6.5	1,106	-2.7	1,248	28.3
Kouvola	247	41.1	1,477	-8.6	56	-46.2	263	-31.9	247	-5.7	129	-13.4
South Karelia	2,744	123.3	4,175	5.1	345	-17.5	602	52.4	1,395	16.9	2,156	98.0
Lappeenranta	1,943	184.1	2,089	13.1	273	-21.6	425	35.8	1,024	22.2	1,684	147.3
Etelä-Savo	1,213	-9.6	4,275	-18.2	615	-1.0	450	-45.3	3,389	-10.9	4,275	2.1
Mikkeli	374	-42.4	1,904	0.9	273	50.8	127	-66.1	537	1.3	627	7.2
Pohjois-Savo	2,201	-15.9	9,902	6.0	549	9.1	1,398	30.5	2,903	21.2	2,088	9.3
Kuopio	1,521	9.7	5,723	13.3	416	21.6	1,095	38.3	2,044	13.9	1,563	1.3
North Karelia	1,515	85.9	3,270	27.4	746	65.8	1,151	93.8	2,153	-7.8	1,630	4.4
Joensuu	.	.	.	.	.	.	.	.	.	.	.	.
Central Finland	4,979	0.3	19,140	0.8	983	8.1	1,656	4.3	3,835	-5.3	2,229	5.5
Jyväskylä	3,314	-15.8	2,820	40.3	858	3.5	1,382	37.1	1,781	-13.1	1,529	5.4
South Ostrobothnia	922	56.3	3,285	-0.6	217	25.4	361	-40.3	1,013	35.6	330	-19.9
Seinäjoki	.	.	.	.	.	.	.	.	.	.	.	.
Ostrobothnia	2,054	-13.2	3,696	25.2	639	46.6	4,630	-12.4	3,682	20.6	1,373	12.4
Vaasa	.	.	.	.	.	.	.	.	.	.	.	.
Central Ostrobothnia	436	-42.7	2,220	67.8	131	79.5	662	21.5	227	-18.3	587	-34.6
Kokkola	383	-45.4	615	-2.1	131	79.5	656	42.9	218	-5.6	539	-26.7
North Ostrobothnia	5,796	18.2	7,783	10.4	2,130	-34.6	18,901	-6.5	11,231	-7.7	5,959	12.4
Kuusamo	1,065	6.8	1,367	10.9	763	-30.4	1,348	103.9	4,769	-17.9	2,140	18.6
Oulu	4,430	21.5	4,161	-4.9	1,311	-27.6	14,913	-9.4	3,085	57.4	2,138	-0.2
Kainuu	610	5.4	1,089	-48.5	944	-37.1	1,085	-10.9	1,909	46.8	1,357	-41.9
Kajaani	.	.	.	.	.	.	.	.	.	.	.	.
Lapland	9,133	6.5	9,471	3.0	47,024	-21.0	65,888	8.3	50,794	-8.2	45,619	0.1
Rovaniemi	2,880	-2.5	2,217	-6.1	15,321	-14.5	14,678	3.5	7,485	-21.2	5,589	1.3
Åland	904	-11.3	6,882	13.3	85	13.3	3,367	-7.2	1,248	-15.0	1,947	12.3
Maarianhamina	544	-0.9	1,858	23.5	66	-5.7	2,268	-11.8	443	-26.4	440	-31.5

**Appendix table 8.1. Nights spent by non-residents and annual change (%) in hotels in 2014**

Region / municipality	Foreign countries		Russia		Sweden		Germany		United Kingdom		United States	
Whole country	4,732,609	-2.2	1,000,356	-20.4	412,867	4.5	403,901	-0.9	395,393	-2.0	196,165	8.7
Mainland Finland	4,624,804	-2.3	998,004	-20.5	321,020	5.5	401,774	-1.0	394,752	-2.0	195,622	8.8
Uusimaa	2,222,800	0.0	329,955	-21.2	167,277	6.2	178,234	0.4	160,366	2.4	143,929	6.9
Espoo	148,268	-6.2	34,954	-21.8	13,149	10.2	12,638	-3.7	8,493	3.2	5,263	3.0
Helsinki	1,638,819	-1.0	231,042	-22.0	121,068	3.9	137,204	-0.7	126,263	5.2	118,678	9.8
Vantaa	330,649	9.7	36,258	-15.8	24,376	18.7	19,347	7.5	19,875	-7.7	16,882	-7.6
Varsinais-Suomi	184,683	10.8	21,300	-10.9	33,877	-1.1	15,455	-1.3	7,760	-5.6	7,828	38.0
Turku	136,093	11.3	16,408	-13.1	24,977	4.5	12,741	27.8	6,486	-6.9	6,859	44.7
Satakunta	46,739	-4.2	1,956	-31.9	5,685	-6.4	9,152	-4.2	3,234	-17.6	2,644	-15.1
Pori	22,821	4.4	1,263	-31.4	2,367	-0.7	4,129	1.4	1,268	-19.5	1,230	-24.8
Kanta-Häme	37,056	-3.8	5,885	-24.9	3,510	3.2	2,810	-49.2	1,569	39.6	772	-21.7
Hämeenlinna	22,005	-11.5	2,988	-29.9	2,105	-3.3	1,806	-30.1	1,147	46.5	585	-12.2
Pirkanmaa	176,777	3.4	19,450	-19.4	15,747	-4.4	16,398	2.1	12,175	8.6	9,589	36.2
Tampere	158,571	5.2	12,621	-21.0	14,822	-3.8	14,580	0.4	11,466	9.8	9,361	41.0
Päijät-Häme	75,170	11.0	30,189	-9.4	4,590	29.3	5,979	31.2	1,860	8.0	952	-22.9
Lahti	41,190	6.1	10,307	-19.4	3,288	29.8	4,618	21.4	1,210	-21.7	705	-26.3
Kymenlaakso	68,332	-29.6	34,903	-30.5	2,978	8.3	2,380	-10.3	10,504	-52.0	911	-1.7
Kouvola	23,107	-10.7	13,608	-20.9	1,238	-7.1	1,338	-3.1	898	31.3	246	43.9
South Karelia	260,322	-19.4	220,594	-24.2	4,692	43.9	5,175	57.6	1,359	-0.8	2,646	124.0
Lappeenranta	116,923	-17.6	89,194	-25.4	2,865	47.1	3,934	66.1	990	6.6	1,845	188.7
Etelä-Savo	73,753	-14.6	49,905	-18.9	1,840	-16.9	3,670	3.0	2,379	66.5	861	-23.1
Mikkeli	32,989	-23.0	21,922	-27.1	873	-12.3	1,891	4.8	455	-7.9	330	-47.7
Pohjois-Savo	80,446	-7.7	31,052	-16.6	4,370	6.8	10,680	-12.5	2,318	-12.3	2,100	-15.8
Kuopio	53,555	-6.7	19,400	-20.0	2,476	7.8	7,677	-12.6	2,017	1.0	1,465	9.4
North Karelia	75,676	15.9	33,656	-16.4	3,141	44.8	5,433	54.9	3,237	74.1	1,395	77.5
Joensuu	48,595	16.2	16,634	-26.1	2,796	52.3	4,466	71.7	3,021	83.6	1,178	86.7
Central Finland	140,143	-1.2	39,359	-16.3	7,313	8.1	14,439	0.9	5,727	9.7	4,639	-3.7
Jyväskylä	66,528	2.7	9,632	-17.7	4,685	8.3	7,577	-3.6	4,997	9.5	3,314	-15.7
South Ostrobothnia	19,710	-0.5	1,629	-19.4	1,910	-11.7	2,887	80.2	515	-35.0	846	70.2
Seinäjoki	11,494	6.3	790	15.7	1,092	-19.7	1,378	65.4	369	-28.9	362	11.4
Ostrobothnia	68,041	9.2	2,401	-20.3	14,491	13.3	5,188	20.0	3,428	9.5	1,941	6.4
Vaasa	55,353	11.7	2,058	-6.6	11,931	22.3	3,868	37.3	3,203	10.0	1,772	9.9
Central Ostrobothnia	11,114	22.2	505	61.3	2,086	5.4	2,151	10.5	291	-16.9	430	-43.3
Kokkola	8,955	15.5	274	6.6	1,819	5.9	2,132	17.5	267	-20.5	381	-45.6
North Ostrobothnia	199,623	0.6	48,033	3.7	14,136	-2.5	21,319	3.3	21,276	-4.8	5,234	17.8
Kuusamo	66,321	5.1	32,658	9.6	1,025	9.0	4,076	-7.9	11,266	2.3	644	-5.3
Oulu	101,563	1.3	13,078	-10.0	11,817	-5.0	10,224	8.1	5,500	3.3	4,319	21.0
Kainuu	66,073	-19.0	39,334	-17.2	1,205	-45.9	2,440	-17.3	1,248	-13.4	600	6.8
Kajaani	8,090	-10.7	3,095	-11.4	578	-18.6	834	4.8	278	45.5	147	37.4
Lapland	818,346	-3.2	87,898	-25.3	32,172	13.7	97,984	-7.4	155,506	-1.2	8,305	6.4
Rovaniemi	234,005	-1.0	39,406	-29.8	5,547	-14.6	19,757	0.5	19,904	14.7	2,714	-1.0
Åland	107,805	1.1	2,352	1.8	91,847	1.1	2,127	13.6	641	-6.1	543	-18.7
Maarianhamina	65,793	-2.5	1,979	9.4	53,939	-2.4	1,647	25.0	461	-25.3	432	2.1



**Appendix table 8.2. Nights spent by non-residents and annual change (%) in hotels in 2014**

Region / municipality	France		Japan		Norway		Estonia		Netherlands		China	
Whole country	187,391	0.9	185,170	-7.1	142,018	5.1	140,036	6.3	124,445	-0.5	123,440	1.0
Mainland Finland	187,032	0.9	185,112	-7.1	139,730	5.2	137,518	6.1	124,160	-0.5	123,317	1.0
Uusimaa	57,448	-1.9	121,690	-1.9	62,133	6.8	55,615	-5.3	56,300	4.7	96,104	2.1
Espoo	3,634	8.2	1,300	-3.6	3,023	-0.0	8,110	-5.3	3,897	-2.6	10,311	-11.6
Helsinki	43,949	-5.9	104,330	0.0	49,906	7.8	29,901	-8.8	41,223	5.3	47,954	2.0
Vantaa	6,936	10.6	15,297	-14.1	6,481	-4.2	8,786	3.7	7,518	26.1	35,121	3.7
Varsinais-Suomi	4,458	-6.6	5,633	22.0	5,671	-16.7	14,823	105.2	4,145	17.7	3,306	-16.7
Turku	3,482	-8.2	2,212	17.7	4,288	-10.6	9,263	87.5	3,618	21.9	2,463	44.1
Satakunta	3,024	19.7	706	13.7	1,348	-8.9	2,271	-35.5	899	-18.7	337	70.2
Pori	1,173	76.7	276	283.3	473	21.6	1,114	-43.5	429	-19.2	193	46.2
Kanta-Häme	788	9.9	444	84.2	816	-20.5	1,985	14.3	589	5.2	350	107.1
Hämeenlinna	534	15.8	425	113.6	579	-16.6	1,142	36.1	413	6.2	303	131.3
Pirkanmaa	6,788	13.2	3,954	19.9	3,771	-8.2	8,838	6.9	3,992	17.2	3,882	1.0
Tampere	6,252	17.0	3,923	22.1	3,521	-6.4	7,713	12.5	3,597	16.4	3,418	-1.0
Päijät-Häme	1,369	63.4	651	48.3	1,252	-1.5	2,855	-8.5	1,204	21.1	620	-7.9
Lahti	825	30.3	554	55.2	868	-17.0	1,701	-21.0	888	17.9	386	-29.0
Kymenlaakso	976	4.5	256	0.4	571	50.3	2,947	-16.7	686	-11.0	348	76.6
Kouvola	379	-2.1	56	-39.1	237	17.9	1,250	-10.1	196	-17.6	132	15.8
South Karelia	1,323	-1.9	336	-16.4	559	59.7	3,045	16.8	996	16.5	753	26.3
Lappeenranta	959	15.7	268	-21.2	393	40.9	1,726	14.7	745	24.2	645	31.6
Etelä-Savo	1,143	11.8	261	-30.6	279	-53.7	2,058	-4.0	931	-0.3	459	-3.8
Mikkeli	671	62.9	119	15.5	104	-66.0	922	6.7	393	22.4	253	-8.7
Pohjois-Savo	1,395	2.3	472	12.4	951	16.4	3,832	17.5	1,990	19.4	1,044	13.7
Kuopio	1,050	16.3	410	23.1	717	21.3	2,525	13.9	1,619	32.8	660	2.3
North Karelia	1,657	43.1	720	78.2	1,105	106.5	2,806	55.5	1,670	11.3	379	35.8
Joensuu	1,355	66.9	578	94.0	962	128.0	1,253	26.3	749	1.4	298	15.5
Central Finland	12,399	71.8	979	11.0	1,517	-0.8	18,585	2.2	3,467	-9.4	667	-47.5
Jyväskylä	3,180	6.2	854	3.1	1,370	35.9	2,774	41.4	1,700	-14.2	615	-43.9
South Ostrobothnia	273	-30.0	217	34.0	323	-41.1	2,046	-5.9	580	-8.4	305	-32.5
Seinäjoki	164	-24.8	177	47.5	186	-18.1	1,053	0.1	381	-20.1	255	147.6
Ostrobothnia	1,761	15.2	636	45.9	3,344	-10.5	3,409	43.6	3,393	25.5	762	-28.9
Vaasa	1,394	-1.1	563	40.0	3,012	-6.1	2,838	62.9	2,090	33.6	739	-19.2
Central Ostrobothnia	130	-19.3	131	122.0	362	7.1	1,539	97.3	191	27.3	77	-36.4
Kokkola	124	-21.0	131	122.0	358	15.5	319	13.9	188	27.0	77	-28.0
North Ostrobothnia	4,721	-4.9	1,743	-42.9	8,114	7.6	4,931	13.8	7,957	-2.9	3,411	-34.6
Kuusamo	919	69.6	425	-55.5	952	90.0	563	11.3	2,184	-23.9	198	-62.1
Oulu	2,663	-18.6	1,268	-29.2	6,820	3.9	2,943	-0.3	2,785	65.4	3,063	-31.9
Kainuu	4,635	-3.9	937	-37.5	908	-18.6	769	-47.9	420	-11.4	99	-79.3
Kajaani	150	-47.2	147	200.0	240	11.6	367	-44.1	93	-22.5	42	-56.3
Lapland	82,744	-5.0	45,346	-21.9	46,706	9.9	5,164	18.4	34,750	-12.6	10,414	29.2
Rovaniemi	17,321	-5.3	14,865	-15.7	11,145	4.0	1,897	-4.3	5,064	-14.6	5,791	22.6
Åland	359	-10.3	58	-12.1	2,288	0.6	2,518	20.2	285	17.3	123	75.7
Maarianhamina	183	-33.7	46	-24.6	1,798	-13.8	1,432	16.0	245	14.5	123	75.7

**Appendix table 9.1. Capacity of accommodation establishments and capacity utilization by type of establishment in 2014**

Whole year on average	Number of establishments	Number of rooms	Number of bed-places	Occupancy rate of bedrooms, %	Change of room occupancy rate, %-units	Room price, euros (incl. VAT 10 %)
All accommodation establishments	1,186	60,706	149,173	47.8	0.2	91.31
Hotels	624	50,946	111,172	51.5	0.4	91.88
Similar establishments	111	2,156	5,508	21.4	-3.5	53.27
Holiday villages	316	5,801	25,106	30.4	-0.2	89.54
Camping sites	136	1,803	7,386	31.7	-3.6	.
Youth hostels	35	767	2,250	33.8	18.9	61.46

**Appendix table 9.2. Capacity of accommodation establishments and capacity utilization by type of establishment, May-August 2014**

May-August on average	Number of establishments	Number of rooms	Number of bed-places	Occupancy rate of bedrooms, %	Change of room occupancy rate, %-units	Room price, euros (incl. VAT 10 %)
All accommodation establishments	1,348	64,687	161,838	51.1	0.7	89.96
Hotels	636	51,701	113,120	56.0	1.6	91.01
Similar establishments	130	2,775	6,938	25.6	-8.5	53.30
Holiday villages	365	6,761	28,424	31.2	-1.7	80.06
Camping sites	217	3,450	13,356	34.8	-2.6	.
Youth hostels	43	1,016	2,849	31.9	-0.2	65.64

**Appendix table 10.1. Capacity of accommodation establishments by type of establishment in 2014**

	Establishments	Rooms	Bed-places	Caravan places
All accommodation establishments	1,408	65,498	160,470	20,854
Hotels	655	53,249	114,943	1,987
Residential hotel	35	1,267	3,659	55
Conference hotel	96	17,774	33,679	0
Spa	42	5,939	13,412	309
Holiday resort	171	7,779	18,676	901
Urban hotel	201	13,290	25,677	207
Other hotel	110	7,200	19,840	515
Similar establishments	130	2,533	6,189	633
Holiday villages	335	5,594	24,486	1,793
Camping sites	243	2,991	11,746	16,275
Youth hostels	45	1,131	3,106	166

**Appendix table 10.2. Capacity of accommodation establishments by opening season in 2014**

		Establishments	Rooms	Bed-places	Caravan places
All accommodation establishments	Total	1,408	65,498	160,470	20,854
	Open year-round	1,074	58,450	139,742	12,290
	Open part of the year	334	7,048	20,728	8,564
Hotels	Total	655	53,249	114,943	1,987
	Open year-round	614	50,975	110,108	1,876
	Open part of the year	41	2,274	4,835	111
Similar establishments	Total	130	2,533	6,189	633
	Open year-round	94	1,659	4,206	516
	Open part of the year	36	874	1,983	117
Holiday villages	Total	335	5,594	24,486	1,793
	Open year-round	253	4,424	20,021	1,151
	Open part of the year	82	1,170	4,465	642
Camping sites	Total	243	2,991	11,746	16,275
	Open year-round	82	728	3,334	8,642
	Open part of the year	161	2,263	8,412	7,633
Youth hostels	Total	45	1,131	3,106	166
	Open year-round	31	664	2,073	105
	Open part of the year	14	467	1,033	61

**Appendix table 10.3. Capacity of accommodation establishments by number of bed-places in 2014**

		Establishments	Rooms	Bed-places	Caravan places
All accommodation establishments	Total	1,408	65,498	160,470	20,854
	0 - 49	602	6,396	17,843	11,670
	50 - 99	371	9,134	25,475	4,400
	100 - 249	264	17,662	41,700	3,182
	250 -	171	32,306	75,452	1,602
Hotels	Total	655	53,249	114,943	1,987
	0 - 49	156	2,550	5,216	343
	50 - 99	153	5,154	10,995	508
	100 - 249	196	15,271	31,762	749
	250 -	150	30,274	66,970	387
Similar establishments	Total	130	2,533	6,189	633
	0 - 49	88	1,192	2,846	444
	50 - 99	34	959	2,305	142
	100 -	8	382	1,038	47
Holiday villages	Total	335	5,594	24,486	1,793
	0 - 49	187	1,496	5,780	715
	50 - 99	95	1,426	6,180	313
	100 -	53	2,672	12,526	765
Camping sites	Total	243	2,991	11,746	16,275
	0 - 49	151	946	3,399	10,119
	50 - 99	72	1,201	4,862	3,348
	100 -	20	844	3,485	2,808
Youth hostels	Total	45	1,131	3,106	166
	0 - 49	20	212	602	49
	50 - 99	17	394	1,133	89
	100 -	8	525	1,371	28

**Appendix table 10.4. Capacity of accommodation establishments by number of rooms in 2014**

		Establishments	Rooms	Bed-places	Caravan places
All accommodation establishments	Total	1,408	65,498	160,470	20,854
	0 - 19	701	7,150	26,431	14,538
	20 - 49	347	10,502	28,524	3,872
	50 - 99	172	12,508	29,333	1,968
	100 -	188	35,338	76,182	476
Hotels	Total	655	53,249	114,943	1,987
	0 - 19	118	1,602	3,988	342
	20 - 49	211	6,679	15,555	576
	50 - 99	147	10,873	23,477	691
	100 -	179	34,095	71,923	378
Similar establishments	Total	130	2,533	6,189	633
	0 - 19	82	990	2,831	301
	20 - 49	41	1,128	2,616	328
	50 -	7	415	742	4
Holiday villages	Total	335	5,594	24,486	1,793
	0 - 19	266	2,452	11,318	912
	20 - 49	51	1,461	6,067	664
	50 -	18	1,681	7,101	217
Camping sites	Total	243	2,991	11,746	16,275
	0 - 19	210	1,830	7,315	12,919
	20 - 49	28	774	2,945	2,230
	50 -	5	387	1,486	1,126
Youth hostels	Total	45	1,131	3,106	166
	0 - 19	25	276	979	64
	20 - 49	16	460	1,341	74
	50 -	4	395	786	28

### Inquiries

Marjut Tuominen 029 551 3556

Ossi Nurmi 029 551 2984

Director in charge:

Hannele Orjala

[liikenne.matkailu@stat.fi](mailto:liikenne.matkailu@stat.fi)

[www.stat.fi](http://www.stat.fi)

Source: Accommodation Statistics. Statistics Finland