

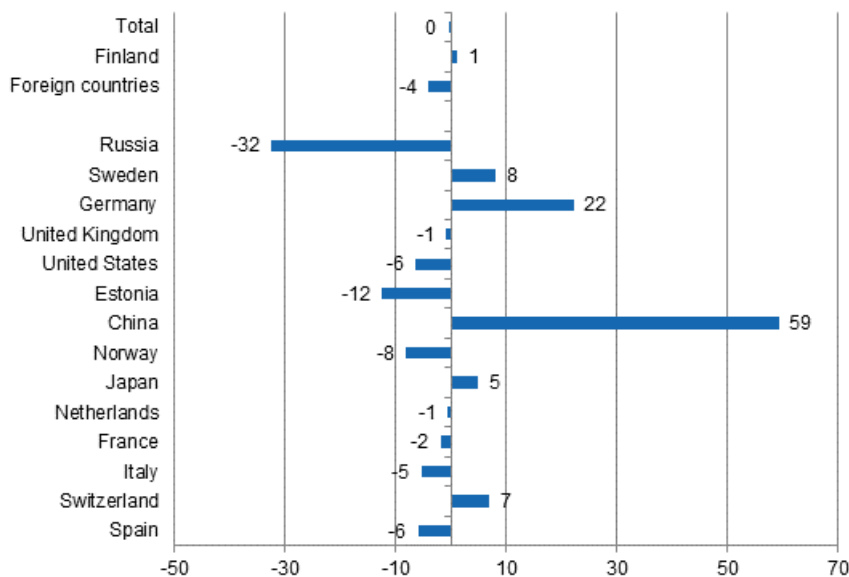
Accommodation statistics

2015, May

Nights spent by foreign tourists in Finland decreased by 4.1 per cent in May

The number of recorded nights spent by foreign tourists at Finnish accommodation establishments in May 2015 was 383,000, which was 4.1 per cent lower than in May 2014. By contrast, overnight stays by resident tourists increased by 1.1 per cent and totalled good 961,000. The total number of overnight stays at accommodation establishments was around 1.3 million, which was almost the same number as in the year before. These figures are preliminary data from Statistics Finland's statistics on accommodation establishments and they have been collected from accommodation establishments with at least 20 beds or caravan pitches with electricity connection.

Change in overnight stays in May 2015/2014, %



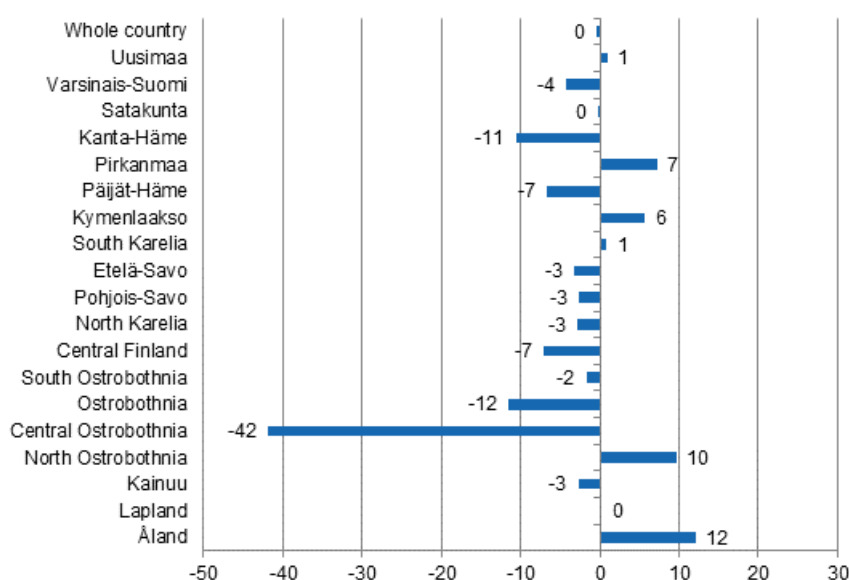
The steep decline in overnight stays by Russian visitors tapered off slightly in May 2015. Altogether, 60,000 overnight stays were recorded for them at Finnish accommodation establishments, which was 32.4 per cent lower than in May 2014. Visitors from Russia and Sweden were the largest groups of foreign tourists in May. Nearly 48,000 nights spent were recorded for Swedish visitors, which was 8.2 per cent

more than twelve months earlier. German tourists came third with close on 37,000 overnight stays, which was as much as 22.3 per cent more than in May 2014. British visitors came next with around 23,000 overnight stays. The number was 0.9 per cent lower than last year.

A total of 18,000 overnight stays were recorded for visitors from the United States, and the drop from May 2014 amounted to 6.4 per cent. Around 14,000 overnight stays each were recorded for Chinese and Estonian visitors. Overnight stays by Estonian visitors decreased by 12.4 per cent compared with May 2014, while among the most important countries of inbound tourism to Finland, the biggest increase was recorded for Chinese tourists, 59.3 per cent.

By region, the total number of overnight stays increased most in the regions of Åland, up by 12.2 per cent, and North Ostrobothnia, up by 9.7 per cent. Overnight stays increased by 7.2 per cent in Pirkanmaa and by 5.7 per cent in Kymenlaakso. The biggest drop in overnight stays was recorded in Central Ostrobothnia 41.8 per cent. The number of overnight stays declined by 11.5 per cent in Ostrobothnia and by 10.5 per cent in Kanta-Häme. Overnight stays in the whole country remained on level with May 2014.

Change in overnight stays in May by region 2015 / 2014, %



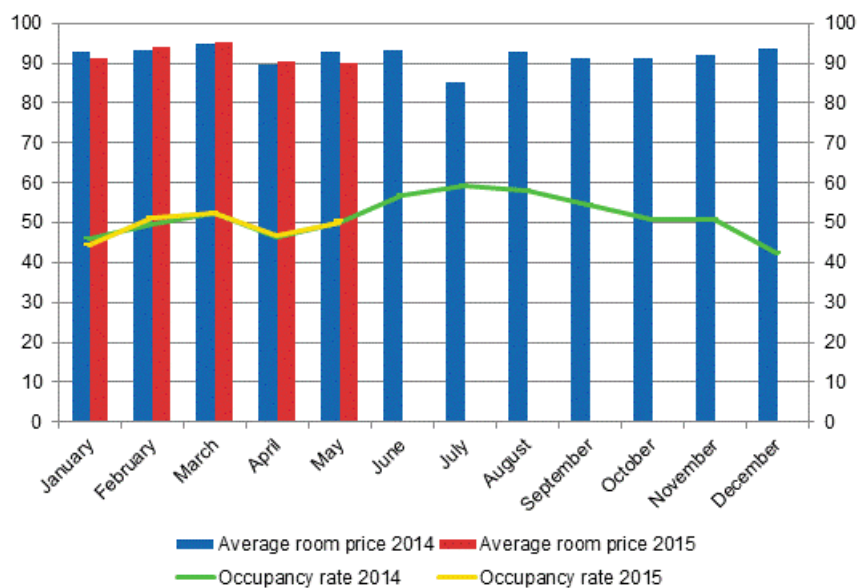
Nearly the same number of overnight stays were recorded at hotels as one year before

The total number of nights spent in hotels was good 1.1 million in May 2015, which was almost the same as one year before. Overnight stays by resident tourists increased by 1.7 per cent and accommodation establishments recorded 810,500 of them. By contrast, overnight stays by foreign tourists decreased by 4.5 per cent year-on-year and hotels recorded a total of 325,000 of them in May 2015.

The occupancy rate of hotel rooms in the whole country was 50.2 per cent in May. One year earlier, it was 49.9 per cent. Among the regions, the highest occupancy rates of hotel rooms were measured in Uusimaa, 66.5 per cent, and Varsinais-Suomi, 56.6 per cent. In Vantaa, the hotel room occupancy rate rose to 74.7 per cent and in Turku to 60.9 per cent. The hotel room occupancy rate in Helsinki was 70.4 per cent.

In May, the realised average price of a hotel room was EUR 89.95 per day for the whole country. Twelve months previously, it was EUR 92.67.

Hotel room occupancy rate and the monthly average price



Total number of nights spent at all accommodation establishments fell by 2 per cent in January to May

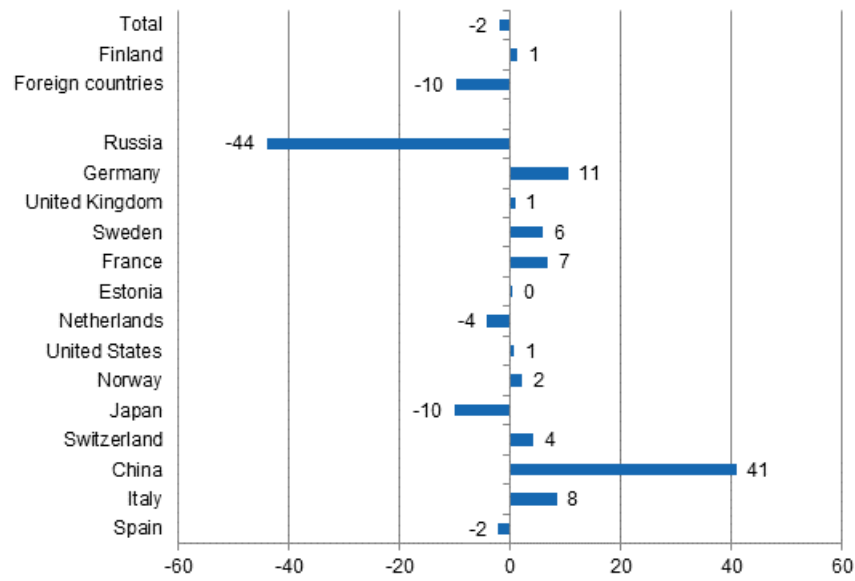
Between January and May 2015, the number of nights spent at accommodation establishments in Finland totalled around seven million. This was 2.0 per cent lower than in the corresponding period one year earlier. The number of nights spent by resident tourists increased by 1.4 per cent while that of nights spent by foreign tourists decreased by 9.8 per cent. Five million overnight stays were recorded for resident tourists and close on two million overnight stays were recorded for non-resident tourists.

Between January and May 2015, the number of nights spent by Russian visitors at accommodation establishments in Finland totalled 359,000, which was 44.0 per cent down on the respective time period of last year. They were still by far the largest group of foreign visitors in January to May, as German visitors came next with good 184,000 overnight stays. Altogether, 163,000 overnight stays were recorded for both British and Swedish visitors in January to May. The overnight stays of visitors from Sweden increased by 5.9 per cent and those of visitors from Great Britain by one per cent from the previous year's corresponding time period.

Both Estonian and Dutch visitors accumulated good 73,000 overnight stays in January to May. Overnight stays by Estonian tourists remained at last year's level, while those by Dutch tourists declined by 4.2 per cent year-on-year. Among tourists from Mediterranean countries, overnight stays of Italian and French visitors increased by seven to eight per cent, whereas those of Spanish visitors decreased by 2.1 per cent from the corresponding period last year. A total of nearly 115,000 overnights in Finnish accommodation establishments were recorded for French tourists. Correspondingly, overnights by Spanish and Italian visitors remained at 30,000 to 40,000.

Among the most important countries of inbound tourism to Finland, overnight stays by visitors from China increased most in January to May, by 41.0 per cent. The number of nights spent by them rose to 45,000.

Change in overnight stays in January-May 2015/2014, %



Contents

Tables

Appendix tables

Appendix table 1.1. Capacity and its utilization, May 2015.....	6
Appendix table 1.2. Capacity and its utilization, January-May 2015.....	7
Appendix table 2.1. Nights spend in all establishments, May 2015.....	8
Appendix table 2.2. Nights spend in all establishments, January-May 2015.....	9
Appendix table 3.1. Hotel capacity and capacity utilization, May 2015.....	10
Appendix table 3.2. Hotel capacity and capacity utilization, January-May 2015.....	11
Appendix table 4.1. Nights spend in hotels, May 2015.....	12
Appendix table 4.2. Nights spend in hotels, January-May 2015.....	13
Appendix table 5.1. Visitor arrivals and nights spend by country of residence, May 2015.....	14
Appendix table 5.2. Visitor arrivals and nights spend by country of residence, January-May 2015.....	14
Appendix table 6. Nights spend in all establishments, 2015.....	15

Appendix tables

Appendix table 1.1. Capacity and its utilization, May 2015

Region	Number of establishments	Number of bedrooms	Occupancy rate of bedrooms, %	Change of the occupancy rate compared to previous year, %-units	Average price of nights spend, in euros (incl. VAT 10 %)
Whole country	1,188	60,892	44.6	-0.2	56.94
Mainland Finland	1,118	59,247	44.9	-0.2	57.06
Uusimaa	146	15,017	65.2	-0.7	68.70
Varsinais-Suomi	77	3,804	50.2	1.1	52.84
Satakunta	42	1,544	42.0	2.6	56.71
Kanta-Häme	33	1,695	32.8	-0.9	46.23
Pirkanmaa	78	4,780	44.4	-1.2	54.89
Päijät-Häme	38	2,016	41.8	-3.1	42.29
Kymenlaakso	33	1,259	40.2	-0.3	49.60
South Karelia	40	1,889	42.5	2.9	50.78
Etelä-Savo	85	2,331	33.7	-0.5	40.18
Pohjois-Savo	53	2,740	39.3	0.1	51.46
North Karelia	52	1,548	38.0	0.1	47.00
Central Finland	53	3,129	39.8	-2.4	54.54
South Ostrobothnia	49	1,829	37.9	1.6	39.85
Ostrobothnia	34	1,450	40.5	-8.6	64.30
Central Ostrobothnia	15	545	40.2	-13.3	59.78
North Ostrobothnia	95	4,478	41.9	3.3	49.46
Kainuu	46	2,221	27.0	-0.1	40.78
Lapland	149	6,972	19.7	0.2	43.81
Åland	70	1,645	34.8	2.5	1) ..

1) [...] Data too uncertain for presentation.

Appendix table 1.2. Capacity and its utilization, January-May 2015

Region	Number of establishments	Number of bedrooms	Occupancy rate of bedrooms, %	Change of the occupancy rate compared to previous year, %-units	Average price of nights spend, in euros (incl. VAT 10 %)
Whole country	1,105	58,929	45.5	-0.1	55.11
Mainland Finland	1,067	57,861	45.9	-0.1	55.13
Uusimaa	141	14,824	56.9	-0.4	67.78
Varsinais-Suomi	64	3,592	43.8	0.1	53.34
Satakunta	40	1,450	36.3	2.7	59.93
Kanta-Häme	32	1,540	32.0	-0.4	47.45
Pirkanmaa	71	4,471	44.4	0.9	54.47
Päijät-Häme	36	1,950	39.0	-2.5	48.06
Kymenlaakso	29	1,148	34.7	-1.1	53.23
South Karelia	35	1,731	40.3	-3.4	51.62
Etelä-Savo	82	2,257	31.2	-2.6	42.96
Pohjois-Savo	51	2,584	43.5	0.1	49.45
North Karelia	48	1,448	41.3	1.1	53.88
Central Finland	48	2,974	44.2	-0.7	47.94
South Ostrobothnia	44	1,704	38.3	1.6	41.56
Ostrobothnia	30	1,357	43.2	0.9	59.92
Central Ostrobothnia	14	536	37.7	-4.5	59.49
North Ostrobothnia	95	4,369	46.9	2.8	46.39
Kainuu	44	2,192	41.6	0.6	38.82
Lapland	162	7,735	45.4	-1.2	50.10
Åland	38	1,068	24.8	1.9	1) ..

1) [...] Data too uncertain for presentation.

Appendix table 2.1. Nights spend in all establishments, May 2015

Region	Nights spend, total	Change of nights spend, total, %	Nights spend, residents	Change of nights spend, residents, %	Nights spend, non-residents	Change of nights spend, non-residents, %
Whole country	1,344,749	-0.4	961,327	1.1	383,422	-4.1
Mainland Finland	1,305,805	-0.8	943,983	1.0	361,822	-5.1
Uusimaa	460,936	0.9	248,290	2.4	212,646	-0.8
Varsinais-Suomi	90,963	-4.2	74,053	2.1	16,910	-24.5
Satakunta	29,402	-0.2	23,239	-0.6	6,163	1.1
Kanta-Häme	31,403	-10.5	28,285	-11.9	3,118	4.1
Pirkanmaa	111,136	7.2	93,001	9.9	18,135	-4.6
Päijät-Häme	44,689	-6.6	39,631	-1.6	5,058	-33.4
Kymenlaakso	31,309	5.7	23,423	13.8	7,886	-12.8
South Karelia	45,133	0.8	28,163	30.1	16,970	-26.7
Etelä-Savo	47,274	-3.2	35,691	2.6	11,583	-17.5
Pohjois-Savo	51,605	-2.6	45,185	-3.6	6,420	5.4
North Karelia	31,511	-2.8	27,166	1.7	4,345	-23.8
Central Finland	58,858	-7.1	52,342	-8.0	6,516	1.1
South Ostrobothnia	44,501	-1.7	42,360	-3.1	2,141	35.8
Ostrobothnia	26,319	-11.5	21,512	-8.4	4,807	-23.2
Central Ostrobothnia	10,613	-41.8	9,745	-38.9	868	-61.8
North Ostrobothnia	90,896	9.7	74,210	6.9	16,686	24.3
Kainuu	40,855	-2.7	38,891	-2.6	1,964	-5.5
Lapland	58,402	0.2	38,796	-1.4	19,606	3.7
Åland	38,944	12.2	17,344	5.7	21,600	18.0

Appendix table 2.2. Nights spend in all establishments, January-May 2015

Region	Nights spend, total	Change of nights spend, total, %	Nights spend, residents	Change of nights spend, residents, %	Nights spend, non-residents	Change of nights spend, non-residents, %
Whole country	6,989,281	-2.0	5,022,538	1.4	1,966,743	-9.8
Mainland Finland	6,910,350	-2.1	4,988,999	1.4	1,921,351	-10.3
Uusimaa	1,865,903	0.4	1,062,581	4.4	803,322	-4.4
Varsinais-Suomi	368,279	-1.7	300,881	0.4	67,398	-10.0
Satakunta	109,271	-0.8	86,085	-3.1	23,186	8.6
Kanta-Häme	125,768	-4.0	113,112	-3.6	12,656	-8.0
Pirkanmaa	505,038	5.2	440,988	8.5	64,050	-13.0
Päijät-Häme	203,565	-11.6	174,650	-9.3	28,915	-23.4
Kymenlaakso	101,658	-1.5	72,722	11.5	28,936	-23.9
South Karelia	201,717	-15.9	129,645	20.7	72,072	-45.5
Etelä-Savo	187,648	-9.6	150,553	0.9	37,095	-36.5
Pohjois-Savo	296,512	-1.0	257,599	2.2	38,913	-18.1
North Karelia	151,692	-6.2	116,063	-2.8	35,629	-16.0
Central Finland	355,042	-5.9	304,849	-3.4	50,193	-18.6
South Ostrobothnia	189,275	-3.0	181,231	-2.4	8,044	-15.6
Ostrobothnia	129,508	5.0	102,967	5.6	26,541	3.0
Central Ostrobothnia	45,486	-15.8	40,970	-15.2	4,516	-20.9
North Ostrobothnia	613,842	2.2	500,604	4.0	113,238	-5.1
Kainuu	405,586	-2.0	373,057	1.1	32,529	-27.5
Lapland	1,054,560	-4.3	580,442	-4.5	474,118	-3.9
Åland	78,931	9.1	33,539	5.1	45,392	12.2

Appendix table 3.1. Hotel capacity and capacity utilization, May 2015

Region / municipality	Number of establishments	Number of bedrooms	Occupancy rate of bedrooms, %	Change compared to previous year, %-units	Room price, euros (incl. VAT 10 %)	¹⁾ RevPAR, euros (incl. VAT 10 %)
Whole country	602	50,301	50.2	0.3	89.95	45.14
Mainland Finland	585	49,395	50.2	0.2	89.95	45.17
Uusimaa	113	14,405	66.5	-0.3	101.75	67.66
Espoo	11	1,196	58.4	1.3	88.93	51.91
Helsinki	52	8,565	70.4	-4.0	108.45	76.36
Vantaa	11	2,235	74.7	6.5	96.30	71.89
Varsinais-Suomi	37	2,958	56.6	1.6	82.74	46.82
Turku	19	2,040	60.9	2.4	84.63	51.58
Satakunta	25	1,164	49.7	2.8	78.29	38.93
Pori	9	659	46.5	5.2	82.09	38.17
Kanta-Häme	18	1,383	37.1	-2.4	77.39	28.70
Hämeenlinna	8	725	37.2	-0.5	86.53	32.17
Pirkanmaa	42	3,953	48.0	-2.1	94.18	45.19
Tampere	25	2,965	53.7	-2.9	97.46	52.35
Päijät-Häme	15	1,756	45.2	-2.8	78.28	35.35
Lahti	6	639	44.6	0.7	82.73	36.88
Kymenlaakso	17	949	44.0	2.4	83.75	36.83
Kouvola	7	441	46.8	7.2	79.45	37.21
South Karelia	16	1,360	48.7	3.6	92.52	45.10
Lappeenranta	8	750	59.7	4.3	86.29	51.54
Etelä-Savo	28	1,521	40.7	0.6	72.24	29.37
Mikkeli	8	552	44.5	-0.1	78.04	34.73
Pohjois-Savo	31	2,364	42.6	1.2	81.81	34.84
Kuopio	16	1,425	46.2	0.7	88.75	40.97
North Karelia	22	1,200	43.8	1.3	80.52	35.26
Joensuu	7	610	57.0	0.8	83.44	47.55
Central Finland	27	2,731	43.3	-1.5	81.29	35.17
Jyväskylä	12	1,489	50.5	1.8	91.08	46.00
South Ostrobothnia	22	1,463	45.1	1.9	71.19	32.12
Seinäjoki	6	558	51.9	4.3	74.44	38.64
Ostrobothnia	22	1,251	44.5	-8.2	86.34	38.45
Vaasa	8	810	47.4	-7.1	89.59	42.48
Central Ostrobothnia	9	478	42.0	-13.8	84.55	35.54
Kokkola	5	361	47.6	-20.9	87.09	41.48
North Ostrobothnia	48	3,455	50.2	5.1	78.33	39.29
Kuusamo	10	759	22.7	4.4	59.81	13.57
Oulu	12	1,590	62.4	4.0	89.90	56.05
Kainuu	20	1,754	32.4	-0.8	68.28	22.15
Kajaani	6	409	32.0	-0.4	80.94	25.93
Sotkamo	6	1,089	34.8	-1.7	58.62	20.42
Lapland	73	5,250	24.6	2.0	71.75	17.66
Rovaniemi	11	1,137	41.4	4.8	70.57	29.19
Åland	17	906	48.2	1.3
Maarianhamina	7	542	64.2	2.1

1) RevPar = Average accommodation sales revenue per available room. Calculation formula: RevPar = Average room price * Occupancy rate. [...] Data too uncertain for presentation.

Appendix table 3.2. Hotel capacity and capacity utilization, January-May 2015

Region / municipality	Number of establishments	Number of bedrooms	Occupancy rate of bedrooms, %	Change compared to previous year, %-units	Room price, euros (incl. VAT 10 %)	¹⁾ RevPAR, euros (incl. VAT 10 %)
Whole country	607	50,415	49.0	0.3	92.28	45.26
Mainland Finland	595	49,724	49.3	0.2	92.29	45.48
Uusimaa	112	14,306	57.7	-0.2	99.33	57.36
Espoo	11	1,195	50.1	0.4	84.91	42.53
Helsinki	52	8,488	61.3	-0.9	104.06	63.76
Vantaa	11	2,236	67.5	-1.4	99.64	67.23
Varsinais-Suomi	37	2,942	47.9	0.3	83.08	39.81
Turku	19	2,037	50.1	0.1	85.55	42.89
Satakunta	24	1,126	43.6	4.0	82.00	35.77
Pori	9	640	44.8	4.9	82.27	36.89
Kanta-Häme	18	1,333	35.2	-0.3	75.86	26.69
Hämeenlinna	8	726	33.3	-0.6	88.01	29.30
Pirkanmaa	42	3,885	46.7	1.2	93.09	43.51
Tampere	25	2,985	50.4	0.5	94.82	47.76
Päijät-Häme	15	1,746	41.6	-2.2	81.75	34.00
Lahti	6	645	45.7	-0.1	88.97	40.62
Kymenlaakso	16	900	38.4	1.3	86.68	33.29
Kouvola	6	430	38.3	2.4	81.23	31.14
South Karelia	16	1,334	43.7	-5.5	92.99	40.61
Lappeenranta	8	750	54.2	0.4	84.55	45.81
Etelä-Savo	28	1,545	36.6	-1.3	71.94	26.34
Mikkeli	8	552	42.9	-0.7	78.39	33.63
Pohjois-Savo	31	2,324	45.4	0.4	85.74	38.91
Kuopio	16	1,412	51.0	0.7	90.26	46.07
North Karelia	22	1,197	45.6	1.0	89.16	40.64
Joensuu	7	611	58.6	2.3	90.05	52.80
Central Finland	27	2,645	47.3	-0.1	85.53	40.48
Jyväskylä	11	1,389	49.9	-0.6	89.14	44.45
South Ostrobothnia	22	1,443	43.9	1.0	73.91	32.42
Seinäjoki	6	553	49.7	2.4	81.83	40.69
Ostrobothnia	22	1,241	45.8	1.9	85.64	39.24
Vaasa	8	800	52.5	1.7	87.70	46.05
Central Ostrobothnia	9	478	39.2	-4.4	84.19	33.04
Kokkola	5	361	43.8	-6.6	86.90	38.09
North Ostrobothnia	48	3,416	51.6	4.4	86.06	44.45
Kuusamo	11	771	44.4	1.0	101.50	45.09
Oulu	12	1,550	61.6	5.4	88.87	54.75
Kainuu	20	1,765	44.8	-0.6	79.77	35.71
Kajaani	6	409	35.8	1.7	78.85	28.21
Sotkamo	6	1,102	53.1	-1.4	83.52	44.32
Lapland	87	6,098	49.8	-0.7	103.81	51.74
Rovaniemi	12	1,260	59.4	-1.5	95.27	56.58
Åland	12	690	31.9	3.2
Maarianhamina	5	421	44.4	4.6

1) RevPar = Average accommodation sales revenue per available room. Calculation formula: RevPar = Average room price
 *Occupancy rate.[...] Data too uncertain for presentation.

Appendix table 4.1. Nights spend in hotels, May 2015

Region / municipality	Nights spend, total	Change of nights spend, total, %	Nights spend, residents	Change of nights spend, residents, %	Nights spend, non-residents	Change of nights spend, non-residents, %
Whole country	1,136,047	-0.2	810,552	1.7	325,495	-4.5
Mainland Finland	1,112,141	-0.4	799,013	1.7	313,128	-5.3
Uusimaa	428,332	0.1	230,097	2.1	198,235	-2.2
Espoo	30,958	-0.2	19,161	8.0	11,797	-11.1
Helsinki	268,871	-4.1	121,541	-5.6	147,330	-2.8
Vantaa	74,797	9.1	46,798	19.1	27,999	-4.2
Varsinais-Suomi	75,481	-2.2	62,864	4.6	12,617	-26.1
Turku	54,421	-0.7	45,031	5.8	9,390	-23.5
Satakunta	23,269	-1.1	17,342	-2.1	5,927	2.1
Pori	12,902	11.5	10,728	10.0	2,174	19.5
Kanta-Häme	26,294	-0.3	23,247	-2.1	3,047	15.0
Hämeenlinna	13,677	-5.3	12,639	0.4	1,038	-44.2
Pirkanmaa	91,831	6.2	76,961	10.3	14,870	-11.1
Tampere	74,304	3.6	60,239	7.8	14,065	-11.4
Päijät-Häme	35,465	-8.6	31,500	-2.8	3,965	-38.2
Lahti	11,991	-8.6	9,212	0.8	2,779	-30.2
Kymenlaakso	18,648	1.5	13,993	9.5	4,655	-16.8
Kouvola	9,145	12.3	7,488	14.8	1,657	2.6
South Karelia	37,130	0.7	23,430	33.8	13,700	-29.3
Lappeenranta	23,459	6.3	16,799	27.3	6,660	-24.9
Etelä-Savo	31,012	-0.1	26,674	0.7	4,338	-4.7
Mikkeli	11,581	-0.6	9,877	4.6	1,704	-22.7
Pohjois-Savo	43,995	-0.0	39,447	-1.8	4,548	17.9
Kuopio	28,297	3.3	25,465	2.8	2,832	8.4
North Karelia	26,159	2.3	22,949	8.7	3,210	-27.9
Joensuu	14,974	1.5	12,824	10.9	2,150	-32.5
Central Finland	52,291	-7.8	46,023	-9.2	6,268	3.7
Jyväskylä	31,567	2.0	26,840	-0.7	4,727	20.9
South Ostrobothnia	33,855	-1.2	31,947	-2.7	1,908	34.7
Seinäjoki	11,522	-11.4	10,210	-16.2	1,312	58.6
Ostrobothnia	22,788	-14.3	18,090	-12.7	4,698	-19.8
Vaasa	15,793	-13.9	11,770	-13.1	4,023	-16.2
Central Ostrobothnia	8,242	-33.9	7,450	-32.6	792	-44.4
Kokkola	6,848	-36.9	6,237	-34.2	611	-55.6
North Ostrobothnia	73,693	9.2	61,636	7.7	12,057	17.8
Kuusamo	8,402	24.6	6,321	26.8	2,081	18.5
Oulu	43,575	7.9	36,761	11.4	6,814	-7.6
Kainuu	36,120	-4.9	34,738	-5.3	1,382	8.6
Kajaani	5,345	-11.0	4,520	-18.3	825	74.4
Sotkamo	28,729	-4.3	28,488	-3.4	241	-55.4
Lapland	47,536	6.6	30,625	4.9	16,911	10.0
Rovaniemi	21,288	16.4	12,983	21.9	8,305	8.9
Åland	23,906	10.5	11,539	-0.8	12,367	23.5
Maarianhamina	17,642	20.1	9,124	10.4	8,518	32.5

Appendix table 4.2. Nights spend in hotels, January-May 2015

Region / municipality	Nights spend, total	Change of nights spend, total, %	Nights spend, residents	Change of nights spend, residents, %	Nights spend, non-residents	Change of nights spend, non-residents, %
Whole country	5,921,362	-1.4	4,217,402	2.5	1,703,960	-9.9
Mainland Finland	5,866,760	-1.5	4,193,162	2.5	1,673,598	-10.3
Uusimaa	1,767,849	0.2	1,010,534	4.8	757,315	-5.4
Espoo	126,638	0.7	80,686	12.5	45,952	-14.9
Helsinki	1,106,341	-1.0	550,252	1.8	556,089	-3.5
Vantaa	330,765	0.0	214,104	8.5	116,661	-12.5
Varsinais-Suomi	324,719	-1.0	267,441	1.3	57,278	-10.4
Turku	228,479	-0.6	186,885	1.7	41,594	-9.6
Satakunta	94,910	-0.3	72,915	-3.1	21,995	10.6
Pori	57,387	6.9	46,505	4.8	10,882	17.1
Kanta-Häme	113,472	0.6	101,331	1.2	12,141	-3.6
Hämeenlinna	59,148	-3.1	53,473	0.4	5,675	-26.9
Pirkanmaa	434,306	6.6	376,306	10.3	58,000	-12.3
Tampere	343,056	7.0	289,761	11.0	53,295	-10.6
Päijät-Häme	174,270	-10.6	149,864	-8.0	24,406	-23.8
Lahti	62,308	-9.4	45,779	-8.3	16,529	-12.4
Kymenlaakso	70,664	-9.3	50,195	1.7	20,469	-28.2
Kouvola	34,816	-1.7	27,668	3.9	7,148	-18.6
South Karelia	165,625	-18.9	108,055	22.2	57,570	-50.3
Lappeenranta	109,007	-9.4	81,306	23.0	27,701	-49.0
Etelä-Savo	133,613	-6.1	118,009	-1.1	15,604	-32.1
Mikkeli	54,161	-4.7	46,567	3.2	7,594	-35.2
Pohjois-Savo	264,480	0.0	235,585	3.2	28,895	-19.9
Kuopio	181,477	3.1	161,461	7.1	20,016	-20.9
North Karelia	130,882	-1.6	101,362	2.3	29,520	-13.1
Joensuu	73,244	0.2	54,178	3.3	19,066	-7.6
Central Finland	328,711	-5.9	281,569	-3.2	47,142	-19.7
Jyväskylä	154,773	-1.1	134,996	0.6	19,777	-11.5
South Ostrobothnia	160,240	-1.6	153,511	-1.1	6,729	-12.0
Seinäjoki	56,605	-4.1	52,062	-5.0	4,543	7.8
Ostrobothnia	114,416	4.3	88,383	3.8	26,033	5.8
Vaasa	84,171	0.3	62,127	-2.1	22,044	7.9
Central Ostrobothnia	38,315	-12.0	35,201	-11.4	3,114	-18.1
Kokkola	31,132	-12.5	28,485	-11.5	2,647	-21.9
North Ostrobothnia	451,797	4.4	367,496	6.4	84,301	-3.5
Kuusamo	122,874	-1.1	92,917	6.3	29,957	-18.6
Oulu	219,806	7.5	187,667	10.3	32,139	-6.6
Kainuu	302,751	-0.9	279,225	2.8	23,526	-30.3
Kajaani	31,597	-0.6	28,309	-0.9	3,288	2.4
Sotkamo	257,290	0.1	241,249	4.3	16,041	-37.5
Lapland	795,740	-4.1	396,180	-4.0	399,560	-4.1
Rovaniemi	185,360	4.5	71,203	12.2	114,157	0.2
Åland	54,602	10.0	24,240	3.3	30,362	15.9
Maarianhamina	43,564	15.7	21,067	10.7	22,497	20.9

Appendix table 5.1. Visitor arrivals and nights spend by country of residence, May 2015

Country of residence	Visitor arrivals in all accommodation establishments	Nights spend in all accommodation establishments	Change of nights spend in all accommodation establishments, %	Nights spend in hotels	Change of nights spend in hotels, %
Total	765,345	1,344,749	-0.4	1,136,047	-0.2
Finland	575,346	961,327	1.1	810,552	1.7
Foreign countries	189,999	383,422	-4.1	325,495	-4.5
Sweden	27,747	47,923	8.2	41,356	8.2
Germany	16,945	36,781	22.3	31,935	23.2
Russia	31,183	60,390	-32.4	42,457	-34.9
United Kingdom	11,125	22,704	-0.9	20,631	0.4
United States	8,840	18,299	-6.4	17,648	-6.4
Norway	5,959	11,377	-8.1	10,560	-8.3
Netherlands	4,883	9,806	-0.5	8,694	1.1
Italy	3,235	7,129	-5.4	6,446	-4.6
France	4,381	9,739	-1.9	8,895	1.5
Japan	6,261	10,972	5.0	10,605	7.3
Estonia	5,772	14,456	-12.4	9,847	-9.5
Switzerland	3,534	7,081	7.0	6,141	8.4
Spain	2,795	6,262	-5.9	5,703	-6.8
China	9,174	13,848	59.3	13,128	56.9

Appendix table 5.2. Visitor arrivals and nights spend by country of residence, January-May 2015

Country of residence	Visitor arrivals in all accommodation establishments	Nights spend in all accommodation establishments	Change of nights spend in all accommodation establishments, %	Nights spend in hotels	Change of nights spend in hotels, %
Total	3,642,907	6,989,281	-2.0	5,921,362	-1.4
Finland	2,779,434	5,022,538	1.4	4,217,402	2.5
Foreign countries	863,473	1,966,743	-9.8	1,703,960	-9.9
Sweden	98,810	162,933	5.9	150,901	6.4
Germany	74,335	184,274	10.6	167,464	10.8
Russia	150,983	359,189	-44.0	270,222	-46.3
United Kingdom	62,661	163,561	0.9	141,588	0.4
United States	29,246	63,499	0.7	61,618	1.4
Norway	30,486	62,604	2.1	53,106	-2.6
Netherlands	28,072	73,496	-4.2	61,758	-1.5
Italy	17,409	38,843	8.4	35,914	10.0
France	37,508	114,572	6.9	105,308	7.4
Japan	33,966	62,452	-10.0	60,738	-9.3
Estonia	29,286	73,679	0.4	55,368	-3.2
Switzerland	17,599	51,570	4.3	36,995	-0.3
Spain	13,432	32,376	-2.1	29,628	-2.0
China	26,090	45,078	41.0	43,403	43.2

Appendix table 6. Nights spend in all establishments, 2015

Month	Nights spend, total	Change of nights spend, total, %	Nights spend, residents	Change of nights spend, residents, %	Nights spend, non-residents	Change of nights spend, non-residents, %
Total	6,989,281	-2.0	5,022,538	1.4	1,966,743	-9.8
January	1,275,622	-7.9	787,708	2.8	487,914	-21.2
February	1,448,618	1.7	1,054,192	3.2	394,426	-2.1
March	1,573,432	-3.1	1,160,999	-0.5	412,433	-9.8
April	1,346,860	-0.2	1,058,312	1.1	288,548	-4.7
May	1,344,749	-0.4	961,327	1.1	383,422	-4.1

Inquiries

Marjut Tuominen 029 551 3556

Kari Keränen 029 551 3208

Director in charge:

Hannele Orjala

liikenne.matkailu@stat.fi

www.stat.fi

Source: Accommodation Statistics. Statistics Finland