

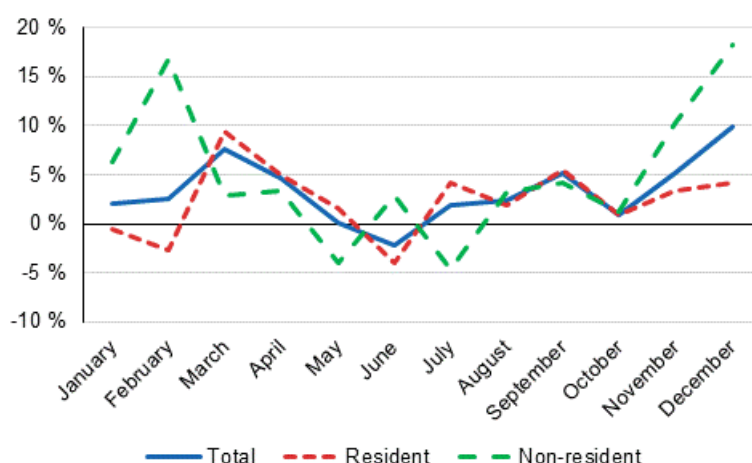
# Accommodation statistics 2016

## Demand for accommodation services grew by 3 per cent in 2016

In 2016, accommodation establishments in Finland recorded 20.3 million overnight stays, of which domestic tourists accounted for around 14.6 million and foreign tourists for 5.8 million. The foreign demand for accommodation services grew by 4.7 per cent and the domestic demand by 2.4 per cent compared with the previous year. In all, total demand for accommodation services grew by 3.1 per cent in 2016.

Thus, the previous years' slight decrease in the demand for accommodation services turned into clear growth in 2016. Except for May and June, the demand increased in all months of the year. In April, September and November, the growth was around five per cent, in March, nearly eight per cent and in December, as much as 10 per cent compared with 2015. In May, the demand for accommodation services was on level with the previous year and in June, the demand declined by about two per cent. These figures are data from Statistics Finland's statistics on accommodation establishments and they have been collected from accommodation establishments with at least 20 beds or caravan pitches with electricity connection.

Year-on-year changes in nights spent (%) by month 2016/2015



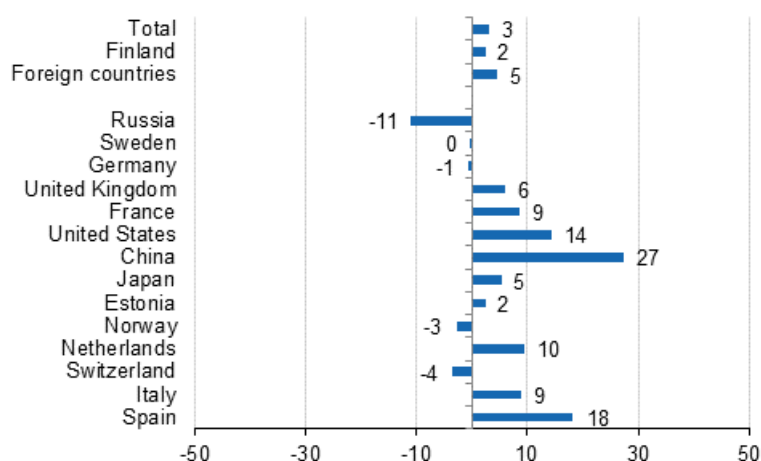
## Russians still formed the largest group of foreign visitors in accommodation establishments in 2016

Russians were still the largest group of foreign tourists in Finnish accommodation establishments in 2016. Nearly 698,000 overnight stays were recorded for Russians, which was 11 per cent down on the year before. In 2016, Russian visitors accounted for 12 per cent of all overnight stays by foreign visitors, having been 14 per cent twelve months earlier. As in the previous year, overnight stays of other foreign visitors increased by around seven per cent in 2016. Swedish, German and British visitors came next after Russians. For Swedes and Germans, the number of overnight stays was good 500,000 for both. For both countries, the number of overnight stays remained on level with the previous year. As in the previous year, British visitors' overnight stays at Finnish accommodation establishments increased by around six per cent and almost exactly half a million overnight stays were recorded for them.

Overnight stays by French tourists numbered 250,000, which was 8.7 per cent more than in 2015. Among the most important countries of inbound tourism to Finland, the biggest growth percentages came from China and the United States. Overnight stays by Chinese tourists increased by around 27 per cent and those by American tourists by 14.4 per cent. Around 232,000 overnight stays each were recorded for these two countries at accommodation establishments. Overnight stays by Japanese tourists increased by 5.4 per cent and they had around 215,000 overnight stays in 2016. Estonians recorded good 190,000 and Norwegians 180,000 overnight stays. Overnight stays by Estonian tourists increased by 2.4 per cent, while those by Norwegian tourists decreased by nearly the same amount. In addition to China, the United States and France, tourism from the Netherlands and Italy also increased clearly in 2016.

Examined by continent, the biggest growth percentage came from Asia, where China and Japan boosted overnight stays to a growth of over 17 per cent, as overnight stays totalled 856,000. For the first time, Asia passed the Nordic countries in the number of overnight stays, from where good 845,000 overnights were recorded, as in the previous year. In total, overnight stays by tourists from EU countries went up by nearly four per cent from 2015, that is, almost 306,000. Tourism from America increased by 12.4 per cent and overnight stays grew to good 330,000. In contrast, tourism from Africa went down slightly and the recorded number of overnight stays by Africans was around 24,000 in 2016.

### Change in overnight stays 2016 / 2015, %



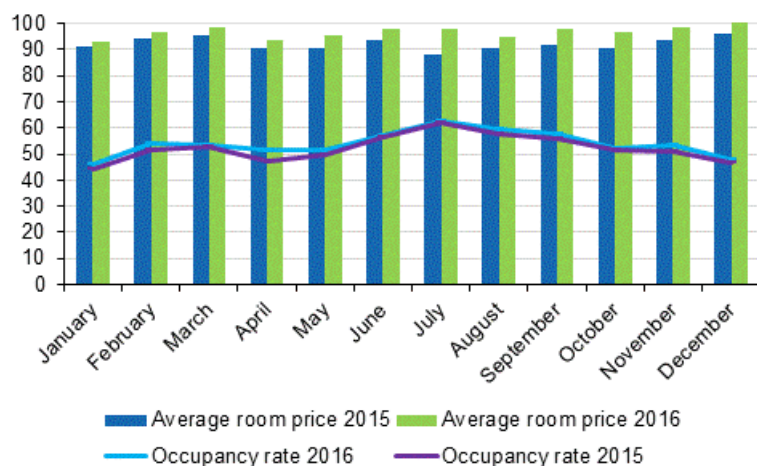
## Number of nights spent at hotels totalled 16.3 million in 2016

In 2016, the total number of nights spent in hotels was 16.3 million, which was three per cent higher than in 2015. Recorded nights spent by resident tourists in hotels numbered 11.4 million and by foreign tourists 4.9 million. The number of nights spent by resident tourists increased by 1.7 per cent and that of nights spent by foreign tourists by 6.8 per cent from the previous year. Overnight stays at hotels covered 80 per

cent of all overnight stays at accommodation establishments. The share of foreign tourists of overnight stays in hotels was 30 per cent and 28 per cent of all overnight stays at accommodation establishments.

The occupancy rate of hotel rooms for the whole country was 54 per cent in 2016. One year earlier, it was 52.3 per cent. The average price of a hotel room has been growing since 2011, when the average price was EUR 88. In 2016, the average price of a hotel room was EUR 97.

### Hotel room occupancy rate and the monthly average price in 2015 and 2016



### Regional development of overnight stays in 2016

In Mainland Finland, the growth in overnight stays was in 2016 biggest in Lapland, where 13 per cent more overnight stays were recorded than in 2015. Overnight stays increased by five to ten per cent in South Karelia, Central Ostrobothnia, Kanta-Häme and North Ostrobothnia. The capacity of accommodation establishment grew somewhat in Lapland, Central Ostrobothnia and South Karelia, while the capacity diminished in Kymenlaakso, Päijät-Häme and Varsinais-Suomi. In addition, Central Finland, Varsinais-Suomi and South Ostrobothnia increased the number of overnight stays by around 3.5 per cent and Uusimaa by 2.3 per cent. Overnight stays remained almost on level with the previous year in the regions of Pohjois-Savo, Pirkanmaa, Kainuu and Etelä-Savo. In all other regions, the numbers of overnight stays went down last year. The biggest drop in overnight stays, 10 per cent, was recorded in the region of Kymenlaakso, where the capacity of accommodation establishments also diminished somewhat. Overnight stays decreased by 7.7 per cent in Ostrobothnia and by 6.4 per cent in North Karelia. In Satakunta and Päijät-Häme, one to three per cent fewer overnight stays were recorded than in 2015.

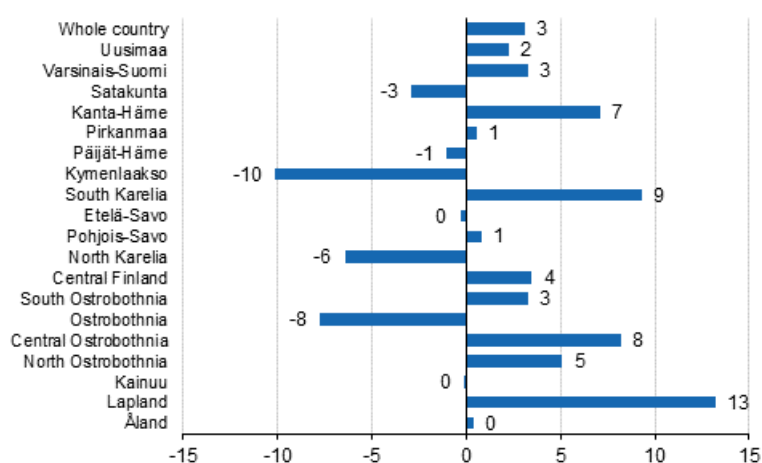
In Åland, overnight stays increased by 0.4 per cent from the previous year.

In absolute numbers, overnight stays in accommodation establishments increased most in Lapland, where 310,000 more overnight stays were recorded, and in Uusimaa, where overnight stays increased by 123,000 from 2015.

In Mainland Finland, the share of overnight stays by foreign visitors was highest in Uusimaa and Lapland, 46 per cent, in South Karelia, 28 per cent, and in Etelä-Savo and Ostrobothnia, 20 per cent. With the exception of Ostrobothnia, these regions also recorded most overnight stays by Russians. In Uusimaa, 189,000 overnight stays were recorded for Russians, in South Karelia 140,000, and in Etelä-Savo 77,000. Around 55,000 overnight stays were recorded for Russians in Lapland.

In Ostrobothnia, the share of foreign tourists in all overnight stays was 20 per cent. The share was 18 per cent in Varsinais-Suomi and Kymenlaakso and nearly 17 per cent in North Ostrobothnia. In other regions of Mainland Finland, at most one night in six was spent by a foreign visitor.

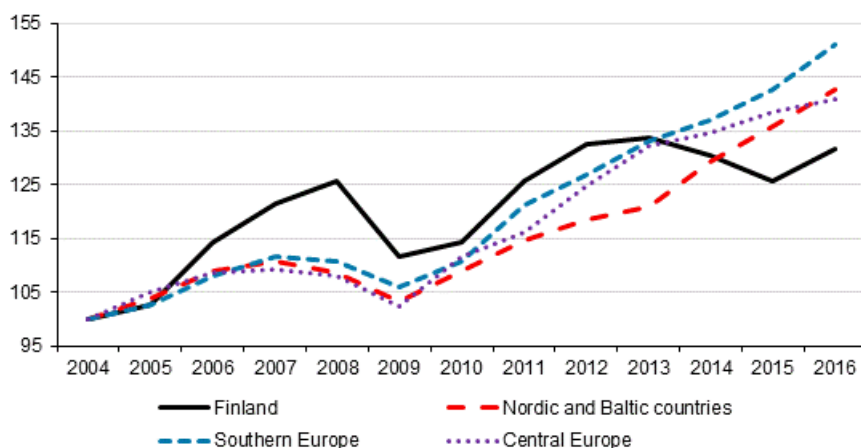
### Change in overnight stays by region 2016/2015,%



### Overnight stays by foreign visitors grew in Finland faster than elsewhere in Europe in 2016

In 2016, overnight stays by foreign visitors in Europe grew by four per cent. In Finland, overnight stays by foreign visitors went up slightly faster than in the rest of Europe, 4.7 per cent. In our neighbouring regions, the Nordic and Baltic countries, the growth amounted to 5.1 per cent. However, overnight stays by foreign tourists were in 2016 still on level with 2012, while in the rest of Europe they have grown by as much as 16 per cent from 2012.

### Nights spent by non-residents in Europe (2004 = 100)

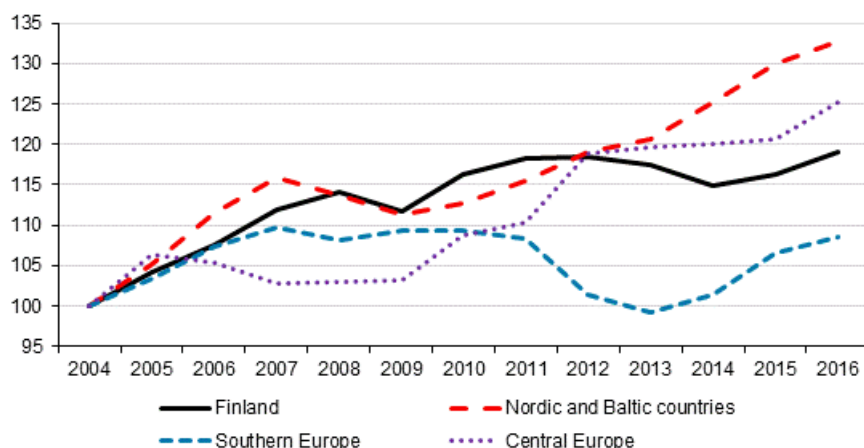


### Overnight stays by resident tourists also growing in Europe

Finland did not quite reach the growth rate of Europe in the increase in domestic overnight stays in 2016. Domestic overnight stays in the whole of Europe grew by 3.2 per cent in 2016, while in Finland, the growth amounted to 2.4 per cent. In the area of Nordic and Baltic countries, the growth in domestic overnight stays remained at 2.1 per cent.

The information on overnight stays in other European countries is based on monthly data on the use of capacity at European accommodation establishments collected by Eurostat.

### Nights spent by residents in Europe (2004 = 100)



### The capacity of accommodation establishments decreased in 2016

In 2016, Statistics Finland’s register of accommodation establishments has been updated with new and closed establishments throughout the year. The number of accommodation establishments contained in the statistics went down by 24 in 2016. However, the room capacity increased by 228 rooms and the number of beds by 1,202 beds. The capacity grew in hotels, while in camping sites and other accommodation establishments the number of establishments, rooms and beds went down compared with 2015.

In 2016, the statistics covered a total of 1,368 accommodation establishments: 653 hotels, 119 guest houses, 328 holiday villages, 230 camping sites and 38 youth hostels. Holiday villages of hotel calibre are included in hotels. The accommodation establishments had 65,754 rooms (or cottages) with a total of 162,482 beds. In addition to the room and bed capacity, the accommodation establishments had 20,806 caravan pitches with electricity connection of which 16,054 were located at camping sites.

When the capacity of accommodation establishments is viewed according to the number of rooms, the statistics contained 1,008 establishments with fewer than 50 rooms and 360 establishments with at least 50 rooms in 2016. Measured by bed capacity, there were 933 establishments with fewer than one hundred beds and 435 establishments with at least one hundred beds.

In 2016, there were 1,084 accommodation establishments that were open year round and 284 establishments that were open part of the year; these were mostly camping sites and holiday villages.

# Contents

## Tables

### Appendix tables

Appendix table 1. Capacity and its utilization in 2016.....	8
Appendix table 2. Nights spent in all establishments in 2016.....	9
Appendix table 3. Hotel capacity and capacity utilization in 2016.....	10
Appendix table 4. Nights spent in hotels in 2016.....	11
Appendix table 5. Visitor arrivals and nights spent by country of residence in 2016.....	12
Appendix table 6. Nights spent in all establishments by month in 2016.....	13
Appendix table 7.1. Nights spent by non-residents and annual change (%) in all establishments in 2016.....	14
Appendix table 7.2. Nights spent by non-residents and annual change (%) in all establishments in 2016.....	15
Appendix table 8.1. Nights spent by non-residents and annual change (%) in hotels in 2016.....	16
Appendix table 8.2. Nights spent by non-residents and annual change (%) in hotels in 2016.....	17
Appendix table 9.1. Capacity of accommodation establishments and capacity utilization by type of establishment in 2016.....	18
Appendix table 9.2. Capacity of accommodation establishments and capacity utilization by type of establishment, May-August 2016.....	18
Appendix table 10.1. Capacity of accommodation establishments by type of establishment in 2016.....	18
Appendix table 10.2. Capacity of accommodation establishments by opening season in 2016.....	19
Appendix table 10.3. Capacity of accommodation establishments by number of bed-places in 2016.....	19
Appendix table 10.4. Capacity of accommodation establishments by number of rooms in 2016.....	20

## Appendix tables

**Appendix table 1. Capacity and its utilization in 2016**

Region	Number of establishments on average	Number of bedrooms on average	Occupancy rate of bedrooms, %	Change of the occupancy rate compared to previous year, %-units	<sup>1)</sup> Average price of night spent, in euros (incl. VAT 10 %)
Whole country	1,158	60,433	49.7	1.5	53.15
Mainland Finland	1,109	59,180	50.0	1.5	53.21
Uusimaa	143	14,774	66.0	3.1	68.88
Espoo	.	.	.	.	.
Helsinki	59	8,908	71.7	2.2	73.29
Vantaa	11	2,265	72.8	3.7	66.62
Varsinais-Suomi	74	3,716	49.7	0.9	50.24
Turku	24	2,258	55.6	1.1	54.00
Satakunta	40	1,441	41.5	0.5	51.51
Pori	13	739	43.2	-1.9	48.97
Kanta-Häme	30	1,588	37.5	3.4	48.25
Hämeenlinna	14	796	40.3	4.7	52.49
Pirkanmaa	72	4,500	50.0	0.4	53.76
Tampere	.	.	.	.	.
Päijät-Häme	34	1,789	40.7	1.7	48.10
Lahti	10	821	51.1	1.9	52.20
Kymenlaakso	27	1,020	43.2	4.6	48.89
Kouvola	11	543	39.4	1.7	44.65
South Karelia	37	1,880	46.6	2.9	40.57
Lappeenranta	14	1,115	56.2	5.1	40.35
Etelä-Savo	81	2,413	39.5	2.0	39.94
Mikkeli	18	690	48.3	2.2	44.85
Pohjois-Savo	52	2,708	44.6	-1.4	48.37
Kuopio	24	1,623	49.4	-0.5	50.07
North Karelia	54	1,554	40.7	-2.6	46.06
Joensuu	.	.	.	.	.
Central Finland	53	3,170	48.0	1.4	50.46
Jyväskylä	15	1,460	56.5	4.9	66.24
South Ostrobothnia	48	1,740	46.0	2.6	43.47
Seinäjoki	.	.	.	.	.
Ostrobothnia	32	1,404	44.4	-0.5	54.86
Vaasa	.	.	.	.	.
Central Ostrobothnia	17	598	42.6	2.8	52.28
Kokkola	.	.	.	.	.
North Ostrobothnia	104	4,675	44.7	-2.0	41.25
Kuusamo	33	1,313	40.8	3.7	29.41
Oulu	.	.	.	.	.
Kainuu	41	2,241	43.1	1.0	33.96
Kajaani	.	.	.	.	.
Lapland	172	7,971	43.1	2.8	45.74
Rovaniemi	17	1,359	59.5	5.0	55.71
Åland	49	1,253	34.9	-0.6	..
Maarianhamina	12	603	49.4	-0.9	..

1)



**Appendix table 2. Nights spent in all establishments in 2016**

Region	Nights spent, total	Change of nights spent, total, %	Nights spent, residents	Change of nights spent, residents, %	Nights spent, non-residents	Change of nights spent, non-residents, %
Whole country	20,343,433	3.1	14,572,158	2.4	5,771,275	4.7
Mainland Finland	19,937,160	3.1	14,409,361	2.5	5,527,799	4.9
Uusimaa	5,509,405	2.3	2,974,866	0.6	2,534,539	4.3
Espoo	.	.	.	.	.	.
Helsinki	3,576,710	3.3	1,659,767	2.3	1,916,943	4.2
Vantaa	907,999	6.9	548,839	3.4	359,160	12.6
Varsinais-Suomi	1,206,660	3.3	985,930	3.2	220,730	4.0
Turku	766,126	5.0	620,181	5.7	145,945	2.6
Satakunta	381,750	-2.9	323,831	-3.2	57,919	-1.2
Pori	213,810	-4.6	190,079	-4.0	23,731	-9.5
Kanta-Häme	381,802	7.1	344,343	8.5	37,459	-4.0
Hämeenlinna	214,549	11.9	196,427	13.7	18,122	-4.5
Pirkanmaa	1,460,676	0.6	1,250,863	0.7	209,813	-0.1
Tampere	.	.	.	.	.	.
Päijät-Häme	535,848	-1.0	456,371	0.3	79,477	-7.6
Lahti	239,916	-4.3	190,937	-1.0	48,979	-15.5
Kymenlaakso	286,154	-10.1	235,461	-2.2	50,693	-34.4
Kouvola	134,457	-2.6	117,344	1.7	17,113	-24.4
South Karelia	645,017	9.3	461,835	15.5	183,182	-3.7
Lappeenranta	432,430	14.0	339,365	17.6	93,065	2.5
Etelä-Savo	694,745	-0.3	554,546	0.2	140,199	-2.4
Mikkeli	221,852	0.5	180,540	3.1	41,312	-9.6
Pohjois-Savo	822,512	0.8	728,616	2.2	93,896	-8.7
Kuopio	549,970	4.6	491,609	5.9	58,361	-5.6
North Karelia	450,189	-6.4	388,285	-1.3	61,904	-29.6
Joensuu	.	.	.	.	.	.
Central Finland	1,017,601	3.5	882,131	3.2	135,470	5.3
Jyväskylä	444,245	3.2	376,773	1.9	67,472	11.2
South Ostrobothnia	692,862	3.3	651,620	1.4	41,242	44.2
Seinäjoki	.	.	.	.	.	.
Ostrobothnia	388,575	-7.7	311,537	-8.0	77,038	-6.1
Vaasa	.	.	.	.	.	.
Central Ostrobothnia	161,135	8.2	143,944	8.8	17,191	3.7
Kokkola	.	.	.	.	.	.
North Ostrobothnia	1,704,249	5.1	1,418,410	5.3	285,839	4.3
Kuusamo	547,147	13.3	432,161	13.1	114,986	14.2
Oulu	.	.	.	.	.	.
Kainuu	931,130	-0.1	843,611	-1.4	87,519	14.6
Kajaani	.	.	.	.	.	.
Lapland	2,666,850	13.2	1,453,161	9.3	1,213,689	18.2
Rovaniemi	553,844	17.7	225,252	6.1	328,592	27.3
Åland	406,273	0.4	162,797	-1.3	243,476	1.5
Maarianhamina	201,468	1.7	103,725	6.5	97,743	-3.0

**Appendix table 3. Hotel capacity and capacity utilization in 2016**

Region / municipality	Number of establishments on average	Number of bedrooms on average	Occupancy rate of bedrooms, %	Change compared to previous year, %-units	Room price, euros (incl. VAT 10 %)	<sup>1)</sup> RevPAR, euros (incl. VAT 10 %)
Whole country	608	50,287	54.0	1.7	96.96	52.39
Mainland Finland	594	49,516	54.2	1.7	96.94	52.56
Uusimaa	113	14,333	67.0	3.1	106.89	71.65
Espoo	11	1,165	55.7	0.7	86.04	47.94
Helsinki	55	8,842	71.8	2.2	113.03	81.10
Vantaa	11	2,265	72.8	3.7	101.71	74.03
Varsinais-Suomi	38	2,828	55.9	2.6	90.39	50.57
Turku	19	1,919	60.4	3.7	91.22	55.13
Satakunta	24	1,129	47.1	-0.0	86.61	40.78
Pori	9	622	46.4	-2.2	90.58	42.00
Kanta-Häme	17	1,338	41.7	2.8	78.14	32.55
Hämeenlinna	8	693	43.5	4.7	86.74	37.70
Pirkanmaa	41	3,823	52.9	0.4	98.73	52.25
Tampere	24	2,878	57.6	0.9	101.48	58.46
Päijät-Häme	13	1,569	43.5	2.2	88.75	38.64
Lahti	6	767	51.9	2.1	86.21	44.72
Kymenlaakso	14	766	48.3	5.7	90.60	43.72
Kouvola	6	403	44.7	2.7	84.83	37.88
South Karelia	16	1,417	51.3	3.2	87.49	44.90
Lappeenranta	8	835	61.6	5.6	82.94	51.06
Etelä-Savo	30	1,672	44.0	1.8	80.70	35.48
Mikkeli	8	547	51.1	2.0	82.47	42.17
Pohjois-Savo	30	2,347	47.1	-0.6	90.45	42.62
Kuopio	16	1,426	51.9	0.3	94.77	49.21
North Karelia	22	1,203	45.6	-2.6	87.17	39.71
Joensuu	6	619	54.3	-3.9	87.90	47.77
Central Finland	27	2,716	51.7	1.5	91.44	47.25
Jyväskylä	11	1,373	59.2	5.2	98.31	58.24
South Ostrobothnia	24	1,451	51.2	2.2	80.37	41.18
Seinäjoki	7	603	57.2	4.6	89.25	51.09
Ostrobothnia	21	1,223	48.6	0.0	92.30	44.84
Vaasa	8	780	56.7	0.7	95.46	54.11
Central Ostrobothnia	10	513	45.7	3.5	84.20	38.47
Kokkola	5	368	49.8	1.7	90.71	45.18
North Ostrobothnia	49	3,338	50.6	-2.0	91.10	46.08
Kuusamo	11	762	40.6	1.9	92.94	37.71
Oulu	11	1,428	63.0	-3.5	98.25	61.87
Kainuu	19	1,787	47.1	1.3	75.32	35.44
Kajaani	6	414	42.9	3.3	79.14	33.96
Lapland	86	6,064	47.0	2.3	100.19	47.14
Rovaniemi	13	1,321	60.4	5.1	103.51	62.50
Åland	14	771	41.7	-1.2	..	..
Maarianhamina	7	500	53.3	-3.5	..	..

1)

**Appendix table 4. Nights spent in hotels in 2016**

Region / municipality	Nights spent, total	Change of nights spent, total, %	Nights spent, residents	Change of nights spent, residents, %	Nights spent, non-residents	Change of nights spent, non-residents, %
Whole country	16,338,840	3.2	11,420,435	1.7	4,918,405	6.8
Mainland Finland	16,125,138	3.3	11,320,846	1.7	4,804,292	7.1
Uusimaa	5,231,838	3.9	2,774,700	1.3	2,457,138	6.9
Espoo	338,586	-5.4	208,094	-7.7	130,492	-1.5
Helsinki	3,449,979	5.1	1,586,246	3.6	1,863,733	6.5
Vantaa	907,999	6.9	548,839	3.4	359,160	12.6
Varsinais-Suomi	942,232	1.1	776,967	1.8	165,265	-1.9
Turku	683,159	3.4	559,369	4.2	123,790	0.1
Satakunta	270,977	-2.4	219,731	-2.8	51,246	-0.4
Pori	153,731	-7.2	133,724	-5.8	20,007	-16.1
Kanta-Häme	324,516	6.2	289,805	7.8	34,711	-5.0
Hämeenlinna	176,457	8.5	159,823	10.3	16,634	-6.5
Pirkanmaa	1,212,100	0.6	1,034,021	0.6	178,079	0.2
Tampere	956,420	1.0	797,498	1.7	158,922	-2.2
Päijät-Häme	436,423	-1.4	366,474	-1.6	69,949	-0.7
Lahti	222,326	-2.7	175,021	-0.6	47,305	-9.9
Kymenlaakso	186,993	-4.3	151,900	2.2	35,093	-24.8
Kouvola	95,677	-1.8	82,012	1.6	13,665	-18.2
South Karelia	517,925	13.9	372,252	19.7	145,673	1.2
Lappeenranta	351,058	18.4	278,110	22.2	72,948	5.9
Etelä-Savo	430,850	0.9	378,431	1.7	52,419	-4.5
Mikkeli	163,420	1.1	139,175	2.8	24,245	-7.6
Pohjois-Savo	693,095	2.2	626,564	2.9	66,531	-3.4
Kuopio	468,415	5.4	426,134	6.4	42,281	-3.6
North Karelia	329,679	-6.6	291,908	-1.6	37,771	-32.8
Joensuu	169,281	-10.0	146,683	-5.1	22,598	-32.4
Central Finland	880,096	5.0	759,641	5.1	120,455	4.2
Jyväskylä	432,191	3.3	365,732	2.0	66,459	11.6
South Ostrobothnia	487,698	0.1	456,256	-2.1	31,442	49.3
Seinäjoki	176,181	7.6	159,201	5.7	16,980	30.4
Ostrobothnia	320,767	-0.2	251,021	-1.9	69,746	6.3
Vaasa	234,588	-2.1	178,656	-3.1	55,932	1.6
Central Ostrobothnia	120,453	13.9	107,997	10.9	12,456	47.9
Kokkola	93,065	4.9	85,113	4.4	7,952	10.1
North Ostrobothnia	1,078,167	-1.1	873,370	-2.0	204,797	2.9
Kuusamo	271,205	7.7	205,704	5.8	65,501	13.8
Oulu	517,572	-5.2	428,906	-5.9	88,666	-1.7
Kainuu	732,725	0.3	676,896	-0.1	55,829	5.7
Kajaani	91,783	6.9	84,294	8.5	7,489	-7.9
Lapland	1,928,604	11.5	912,912	3.6	1,015,692	19.7
Rovaniemi	524,556	17.9	211,257	5.6	313,299	27.8
Åland	213,702	-2.6	99,589	-0.3	114,113	-4.6
Maarianhamina	158,386	-0.4	82,848	3.1	75,538	-4.0

**Appendix table 5. Visitor arrivals and nights spent by country of residence in 2016**

Country of residence	Visitor arrivals in all accommodation establishments	Nights spent in all accommodation establishments	Change of nights spent in all accommodation establishments, %	Nights spent in hotels	Change of nights spent in hotels, %
Total	11,108,083	20,343,433	3.1	16,338,840	3.2
Finland	8,319,180	14,572,158	2.4	11,420,435	1.7
Foreign countries	2,788,903	5,771,275	4.7	4,918,405	6.8
Russia	306,794	697,596	-10.9	509,399	-10.7
Sweden	313,866	549,292	-0.1	432,008	-1.6
Germany	268,081	540,342	-0.5	446,103	0.1
United Kingdom	199,738	500,738	6.1	453,464	7.9
France	93,513	249,997	8.7	222,380	9.7
United States	107,823	231,708	14.4	224,533	15.2
China	158,239	231,573	27.3	225,283	27.5
Japan	114,463	214,495	5.4	210,201	6.5
Estonia	84,121	193,376	2.4	137,366	5.2
Norway	96,599	180,851	-2.8	141,938	-1.2
Netherlands	76,859	174,743	9.5	139,710	9.3
Switzerland	69,238	153,212	-3.5	114,759	-4.3
Italy	66,057	139,197	9.0	125,939	10.6
Spain	57,149	125,828	18.2	113,370	19.9
Denmark	56,454	103,880	6.0	96,793	6.9
Poland	34,856	88,766	-11.5	73,225	-1.0
Belgium	28,213	60,534	9.6	53,909	9.4
Austria	26,525	59,122	-2.5	51,495	-2.1
Australia	27,604	57,480	-0.2	53,851	-0.0
Latvia	21,123	55,197	27.6	33,193	15.3
India	23,857	54,656	0.1	53,303	-0.7
Thailand	15,172	49,649	-2.1	19,392	30.4
Israel	16,786	49,458	23.0	46,494	26.5
Canada	18,207	49,061	6.6	47,073	8.8
South Korea	22,948	41,840	19.4	39,638	24.0
Czech	16,267	34,984	0.6	29,913	4.9
Lithuania	15,659	33,746	16.3	22,676	6.5
Turkey	14,559	30,722	25.0	29,553	25.4
Portugal	9,147	24,754	34.0	23,563	38.4
Ireland	11,099	24,717	9.4	22,385	4.6
Taiwan	15,880	22,381	5.6	21,426	4.8
Brazil	8,946	20,032	-2.3	19,127	-0.2

**Appendix table 6. Nights spent in all establishments by month in 2016**

Month	Nights spent, total	Change of nights spent, total, %	Nights spent, residents	Change of nights spent, residents, %	Nights spent, non-residents	Change of nights spent, non-residents, %
Total	20,343,433	3.1	14,572,158	2.4	5,771,275	4.7
January	1,302,613	2.1	782,377	-0.6	520,236	6.3
February	1,488,419	2.6	1,027,235	-2.7	461,184	16.7
March	1,697,070	7.7	1,272,475	9.4	424,595	2.8
April	1,410,108	4.7	1,111,194	5.0	298,914	3.4
May	1,349,952	0.0	976,991	1.6	372,961	-4.0
June	1,971,370	-2.2	1,434,312	-4.0	537,058	2.9
July	3,004,626	1.9	2,286,303	4.1	718,323	-4.6
August	2,194,726	2.3	1,516,033	1.9	678,693	3.2
September	1,645,655	5.2	1,222,456	5.6	423,199	4.2
October	1,432,206	1.0	1,115,732	0.9	316,474	1.3
November	1,324,257	5.2	960,471	3.3	363,786	10.3
December	1,522,431	9.8	866,579	4.2	655,852	18.2
Spring (January-April)	5,898,210	4.4	4,193,281	3.2	1,704,929	7.5
Summer (May-August)	8,520,674	0.7	6,213,639	1.2	2,307,035	-0.6
Autumn (September-December)	5,924,549	5.3	4,165,238	3.5	1,759,311	9.7

**Appendix table 7.1. Nights spent by non-residents and annual change (%) in all establishments in 2016**

Region	Foreign countries		Russia		Sweden		Germany		United Kingdom		France	
Whole country	5,771,275	4.7	697,596	-10.9	549,292	-0.1	540,342	-0.5	500,738	6.1	249,997	8.7
Mainland Finland	5,527,799	4.9	693,782	-10.8	361,286	-0.8	527,726	-0.5	499,319	6.3	248,790	8.7
Uusimaa	2,534,539	4.3	189,017	-9.9	187,254	0.3	213,118	-2.2	173,670	-2.6	69,803	6.5
Espoo	.	.	.	.	.	.	.	.	.	.	.	.
Helsinki	1,916,943	4.2	138,489	-8.4	141,311	3.0	156,024	-6.4	136,771	-3.2	54,618	5.2
Vantaa	359,160	12.6	20,544	-10.4	25,607	-2.2	21,835	-4.7	24,859	10.2	8,663	17.6
Varsinais-Suomi	220,730	4.0	14,500	-11.4	36,224	-2.1	26,653	25.2	9,025	-15.1	6,955	15.6
Turku	145,945	2.6	8,889	-10.0	25,655	0.7	17,609	12.8	7,862	-6.4	5,117	19.8
Satakunta	57,919	-1.2	2,625	-12.9	6,101	-9.8	12,595	5.3	3,335	-47.1	3,555	17.0
Pori	23,731	-9.5	1,055	-19.0	2,552	4.1	3,876	-6.9	1,331	-64.9	906	-28.3
Kanta-Häme	37,459	-4.0	3,738	-11.4	3,952	8.7	3,906	41.5	1,458	10.0	944	25.7
Hämeenlinna	18,122	-4.5	2,299	8.0	1,725	-8.8	1,762	7.6	1,034	-0.6	506	37.1
Pirkanmaa	209,813	-0.1	14,939	-15.0	18,847	8.0	19,089	-22.4	10,924	-9.5	7,380	3.8
Tampere	.	.	.	.	.	.	.	.	.	.	.	.
Päijät-Häme	79,477	-7.6	16,559	-27.3	5,751	6.8	6,470	-18.6	2,555	-27.2	1,330	-12.3
Lahti	48,979	-15.5	10,361	-23.7	4,299	13.9	4,346	-27.1	1,574	-41.2	805	-30.9
Kymenlaakso	50,693	-34.4	19,161	-31.9	3,270	0.0	3,727	-32.8	2,452	-80.3	1,357	-16.6
Kouvola	17,113	-24.4	6,020	-28.5	1,070	-18.5	1,585	-29.6	433	1.9	447	-47.7
South Karelia	183,182	-3.7	139,696	-2.9	3,335	7.4	4,165	2.2	1,250	-7.0	1,189	-8.7
Lappeenranta	93,065	2.5	68,978	0.6	2,204	24.4	2,988	2.8	954	-11.0	838	-15.5
Etelä-Savo	140,199	-2.4	76,889	-6.9	3,598	8.9	16,041	8.2	2,592	-5.1	2,460	6.9
Mikkeli	41,312	-9.6	20,157	-14.6	1,650	19.7	2,964	13.3	1,015	33.9	729	-17.1
Pohjois-Savo	93,896	-8.7	27,376	-12.2	4,103	-2.1	13,272	-8.4	2,914	1.3	1,728	-22.3
Kuopio	58,361	-5.6	19,266	-5.6	2,700	-8.0	4,951	-27.0	2,336	6.2	1,337	-17.4
North Karelia	61,904	-29.6	22,916	-16.8	2,168	-38.8	8,181	-22.1	1,733	-38.1	1,525	-11.5
Joensuu	.	.	.	.	.	.	.	.	.	.	.	.
Central Finland	135,470	5.3	20,353	-20.6	8,346	-2.1	18,612	13.0	6,781	19.5	9,338	-33.4
Jyväskylä	67,472	11.2	4,538	-22.1	4,879	-13.5	7,968	6.2	5,465	14.0	3,393	11.0
South Ostrobothnia	41,242	44.2	1,882	-18.5	2,620	3.7	2,774	8.5	891	4.8	1,361	223.3
Seinäjoki	.	.	.	.	.	.	.	.	.	.	.	.
Ostrobothnia	77,038	-6.1	1,645	-25.9	20,567	8.5	6,041	8.4	3,435	6.7	1,424	-2.1
Vaasa	.	.	.	.	.	.	.	.	.	.	.	.
Central Ostrobothnia	17,191	3.7	325	-58.7	2,048	-1.8	1,556	-0.1	542	-12.9	288	24.1
Kokkola	.	.	.	.	.	.	.	.	.	.	.	.
North Ostrobothnia	285,839	4.3	52,059	-6.9	20,768	6.4	29,716	-13.6	39,705	12.5	7,169	-1.9
Kuusamo	114,986	14.2	39,026	-13.2	1,457	34.9	7,515	34.0	26,600	11.6	2,727	3.9
Oulu	.	.	.	.	.	.	.	.	.	.	.	.
Kainuu	87,519	14.6	34,824	-4.0	2,223	11.2	4,370	4.2	2,762	22.3	6,913	30.7
Kajaani	.	.	.	.	.	.	.	.	.	.	.	.
Lapland	1,213,689	18.2	55,278	-18.1	30,111	-16.7	137,440	5.8	233,295	24.3	124,071	15.9
Rovaniemi	328,592	27.3	17,280	-22.2	6,891	-7.5	24,848	3.1	27,941	28.4	27,712	15.7
Åland	243,476	1.5	3,814	-23.8	188,006	1.2	12,616	-0.5	1,419	-28.5	1,207	-0.7
Maarianhamina	97,743	-3.0	1,735	-20.9	79,709	-2.8	3,505	-1.5	968	-31.4	678	42.4

**Appendix table 7.2. Nights spent by non-residents and annual change (%) in all establishments in 2016**

Region	United States		China		Japan		Estonia		Norway		Netherlands	
Whole country	231,708	14.4	231,573	27.3	214,495	5.4	193,376	2.4	180,851	-2.8	174,743	9.5
Mainland Finland	230,456	14.4	231,452	27.4	214,367	5.5	186,180	2.3	177,548	-2.7	173,609	9.7
Uusimaa	167,732	12.8	168,219	17.9	146,769	4.5	72,786	-0.8	68,798	7.2	63,075	3.0
Espoo	.	.	.	.	.	.	.	.	.	.	.	.
Helsinki	139,475	13.3	89,240	23.0	133,130	5.3	36,025	0.2	53,080	2.3	47,172	5.5
Vantaa	20,890	17.7	53,040	0.9	11,148	-7.6	10,152	3.9	8,390	24.1	8,110	4.6
Varsinais-Suomi	7,046	-15.1	3,698	2.5	4,791	-7.3	21,568	24.5	6,751	-12.6	6,514	2.5
Turku	5,924	-11.8	2,811	23.3	2,218	18.4	7,456	24.6	5,263	-4.1	5,203	-1.1
Satakunta	1,466	-13.6	483	4.8	675	35.8	3,409	-2.6	1,132	-22.3	1,751	29.9
Pori	579	-25.2	135	-24.2	281	62.4	1,747	-19.5	344	-43.0	935	56.9
Kanta-Häme	803	3.1	1,016	37.9	800	24.8	2,186	3.8	1,046	24.4	718	10.1
Hämeenlinna	491	-18.8	300	72.4	781	26.0	1,200	4.3	414	-33.1	487	27.8
Pirkanmaa	8,735	4.0	5,320	-16.7	4,008	17.7	13,349	-5.4	4,750	12.5	5,738	4.5
Tampere	.	.	.	.	.	.	.	.	.	.	.	.
Päijät-Häme	1,549	-14.9	1,435	89.3	939	-0.4	5,019	-27.3	2,342	13.2	1,494	-42.2
Lahti	975	-19.0	447	-8.6	509	-8.9	2,234	-37.0	1,487	0.2	1,033	-35.5
Kymenlaakso	1,050	-29.4	451	42.3	181	-30.7	3,511	3.8	483	-4.4	1,386	7.5
Kouvola	390	-29.7	90	-39.2	88	-17.8	1,874	36.8	214	-14.4	408	45.7
South Karelia	967	-20.0	1,502	211.6	257	2.8	4,550	5.9	1,183	181.7	1,995	114.7
Lappeenranta	572	39.9	1,343	312.0	223	15.5	3,199	38.6	1,032	245.2	595	-8.6
Etelä-Savo	1,438	17.9	985	49.7	566	37.0	3,992	-10.0	305	-33.7	2,648	-30.8
Mikkeli	516	10.3	376	32.4	277	48.1	1,724	-23.4	160	37.9	563	3.3
Pohjois-Savo	5,131	176.8	1,222	-15.0	562	5.8	6,724	-12.0	1,004	12.4	2,244	-7.2
Kuopio	4,507	200.3	927	-8.3	471	14.0	4,750	-0.3	760	27.5	1,663	-7.0
North Karelia	806	-38.1	519	8.1	639	-30.1	2,813	-30.6	439	-94.8	1,922	-4.3
Joensuu	.	.	.	.	.	.	.	.	.	.	.	.
Central Finland	5,344	32.8	1,588	54.0	2,366	101.5	18,836	22.7	1,596	-7.9	4,619	-9.3
Jyväskylä	4,883	50.8	1,363	56.3	2,152	94.8	2,505	5.0	1,266	-17.6	2,208	-8.9
South Ostrobothnia	894	59.1	317	53.9	494	7.9	3,248	30.8	732	31.9	593	2.1
Seinäjoki	.	.	.	.	.	.	.	.	.	.	.	.
Ostrobothnia	2,241	16.8	808	-5.8	822	50.3	3,412	68.3	3,424	-7.3	2,722	1.8
Vaasa	.	.	.	.	.	.	.	.	.	.	.	.
Central Ostrobothnia	493	24.5	254	15.5	121	-33.1	1,271	-21.7	469	-4.7	355	64.4
Kokkola	.	.	.	.	.	.	.	.	.	.	.	.
North Ostrobothnia	6,932	19.0	6,243	80.3	3,893	32.9	7,823	12.0	14,288	-15.6	14,469	43.7
Kuusamo	989	-6.7	2,595	442.9	2,505	65.5	1,690	26.1	799	24.8	6,622	114.7
Oulu	.	.	.	.	.	.	.	.	.	.	.	.
Kainuu	1,615	267.0	2,308	903.5	1,122	10.3	1,380	-42.9	1,173	-8.1	1,998	73.0
Kajaani	.	.	.	.	.	.	.	.	.	.	.	.
Lapland	16,214	39.6	35,084	99.5	45,362	4.3	10,303	3.1	67,633	1.6	59,368	17.9
Rovaniemi	6,533	32.6	17,514	124.5	17,254	13.7	1,941	-16.5	13,500	4.5	6,986	21.5
Åland	1,252	21.8	121	-44.0	128	-28.9	7,196	4.6	3,303	-8.1	1,134	-10.6
Maarianhamina	638	-17.6	96	-54.7	110	-28.6	1,813	33.6	2,383	-9.6	482	-5.3

**Appendix table 8.1. Nights spent by non-residents and annual change (%) in hotels in 2016**

Region / municipality	Foreign countries		Russia		United Kingdom		Germany		Sweden		China	
Whole country	4,918,405	6.8	509,399	-10.7	453,464	7.9	446,103	0.1	432,008	-1.6	225,283	27.5
Mainland Finland	4,804,292	7.1	507,809	-10.7	452,672	8.1	443,976	0.1	336,675	-0.4	225,206	27.6
Uusimaa	2,457,138	6.9	178,656	-8.8	170,518	-2.3	200,349	-0.2	185,074	0.6	167,276	18.6
Espoo	130,492	-1.5	13,136	-24.3	6,969	-17.7	15,536	48.5	10,355	-15.5	14,276	9.7
Helsinki	1,863,733	6.5	133,151	-6.5	134,339	-2.6	145,871	-5.5	140,031	3.4	88,360	24.6
Vantaa	359,160	12.6	20,544	-10.4	24,859	10.2	21,835	-4.7	25,607	-2.2	53,040	0.9
Varsinais-Suomi	165,265	-1.9	9,649	-15.0	8,134	-12.7	19,038	28.5	33,029	-0.7	3,445	3.6
Turku	123,790	0.1	7,372	-10.4	7,235	-8.4	13,579	12.0	24,075	1.5	2,681	29.2
Satakunta	51,246	-0.4	1,673	10.5	3,241	-47.8	11,253	10.8	5,945	-4.6	457	2.5
Pori	20,007	-16.1	821	-8.2	1,268	-66.1	3,532	-8.2	2,498	4.1	133	-22.2
Kanta-Häme	34,711	-5.0	2,702	-16.3	1,418	7.3	3,560	40.2	3,792	9.7	996	35.1
Hämeenlinna	16,634	-6.5	1,548	1.1	1,002	-3.4	1,631	4.8	1,693	-8.8	290	66.7
Pirkanmaa	178,079	0.2	11,447	-12.4	10,222	-11.9	15,482	-22.7	18,025	8.7	4,846	-7.4
Tampere	158,922	-2.2	7,178	-10.8	9,286	-16.2	13,272	-27.6	16,660	8.4	4,259	-11.5
Päijät-Häme	69,949	-0.7	13,741	-21.0	2,442	-24.4	5,131	-16.8	5,495	11.7	1,434	94.8
Lahti	47,305	-9.9	9,916	-19.9	1,540	-40.1	4,193	-16.9	4,200	16.2	446	-4.5
Kymenlaakso	35,093	-24.8	10,596	-31.9	2,252	-61.5	2,673	-24.0	3,006	5.3	324	35.6
Kouvola	13,665	-18.2	4,069	-26.2	407	-1.0	1,312	-24.4	1,043	-17.5	87	-41.2
South Karelia	145,673	1.2	115,360	-0.4	1,145	-8.9	3,223	-0.8	3,022	3.7	1,465	218.5
Lappeenranta	72,948	5.9	53,527	5.4	854	-14.9	2,449	1.3	1,979	20.7	1,307	329.9
Etelä-Savo	52,419	-4.5	26,840	-11.6	1,390	-0.4	3,522	3.3	2,450	11.1	732	43.0
Mikkeli	24,245	-7.6	11,428	-16.6	694	6.8	1,524	-7.4	1,448	19.2	357	25.7
Pohjois-Savo	66,531	-3.4	16,846	-12.9	2,593	6.9	10,657	-7.5	3,672	0.2	1,085	-16.6
Kuopio	42,281	-3.6	10,892	-6.0	2,167	12.1	3,551	-35.7	2,430	-4.2	829	-13.6
North Karelia	37,771	-32.8	11,691	-26.5	1,469	-40.9	4,748	-37.6	1,758	-41.3	477	12.0
Joensuu	22,598	-32.4	5,629	-25.0	1,087	-42.2	2,560	-43.4	1,397	-40.8	393	-4.1
Central Finland	120,455	4.2	17,810	-17.6	6,609	23.8	17,142	15.8	7,663	-1.6	1,557	60.7
Jyväskylä	66,459	11.6	4,441	-20.8	5,459	14.1	7,881	6.6	4,842	-14.0	1,363	56.3
South Ostrobothnia	31,442	49.3	1,164	-16.1	844	25.4	2,324	8.4	2,291	12.2	313	56.5
Seinäjoki	16,980	30.4	601	149.4	467	0.0	1,109	-2.3	1,153	-6.0	77	-2.5
Ostrobothnia	69,746	6.3	1,465	-13.6	3,334	7.9	4,980	16.6	18,234	18.2	794	-7.5
Vaasa	55,932	1.6	1,285	-14.8	2,961	4.8	3,362	4.9	15,151	18.0	754	-8.3
Central Ostrobothnia	12,456	47.9	235	-21.1	408	-16.7	1,135	15.5	1,810	-1.3	254	42.7
Kokkola	7,952	10.1	227	-22.8	366	-24.2	860	-11.8	1,681	-3.4	178	6.0
North Ostrobothnia	204,797	2.9	24,311	-17.6	31,788	18.9	22,963	-20.0	16,985	5.2	4,874	48.5
Kuusamo	65,501	13.8	16,971	-19.7	19,364	16.8	4,748	22.8	1,188	46.7	1,301	232.7
Oulu	88,666	-1.7	5,350	-22.3	5,246	7.8	10,006	-15.5	12,941	2.4	2,845	17.5
Kainuu	55,829	5.7	23,573	-3.7	1,415	-4.3	2,830	16.3	1,813	21.6	2,271	1053
Kajaani	7,489	-7.9	1,530	-11.2	272	-53.2	799	-27.4	573	2.7	102	112.5
Lapland	1,015,692	19.7	40,050	-20.1	203,450	26.1	112,966	6.2	22,611	-25.4	32,606	98.6
Rovaniemi	313,299	27.8	16,932	-22.8	27,741	28.5	21,067	0.2	5,925	-12.1	17,371	126.2
Åland	114,113	-4.6	1,590	-23.8	792	-47.0	2,127	-5.6	95,333	-5.4	77	-27.4
Maarianhamina	75,538	-4.0	1,383	-23.0	726	-38.2	1,579	-1.6	63,746	-2.5	58	-43.1



**Appendix table 8.2. Nights spent by non-residents and annual change (%) in hotels in 2016**

Region / municipality	United States		France		Japan		Norway		Netherlands		Estonia	
Whole country	224,533	15.2	222,380	9.7	210,201	6.5	141,938	-1.2	139,710	9.3	137,366	5.2
Mainland Finland	223,910	15.2	221,927	9.7	210,088	6.5	140,256	-0.7	139,458	9.4	134,470	4.8
Uusimaa	166,088	14.1	65,751	10.7	145,148	5.8	67,583	7.6	60,061	3.4	61,801	8.7
Espoo	4,929	2.6	2,624	-11.2	1,444	14.4	4,241	31.0	3,159	-25.8	11,388	27.6
Helsinki	137,942	14.8	51,469	10.9	131,585	6.9	52,103	2.5	44,786	6.2	31,798	6.7
Vantaa	20,890	17.7	8,663	17.6	11,148	-7.6	8,390	24.1	8,110	4.6	10,152	3.9
Varsinais-Suomi	6,212	-18.8	4,138	3.6	4,490	-9.7	6,018	-9.8	4,722	-2.2	11,127	3.3
Turku	5,254	-15.6	3,475	7.6	1,954	14.5	4,819	-1.2	4,042	-3.9	4,829	4.0
Satakunta	1,433	-14.8	3,475	16.1	663	37.8	1,005	-24.3	1,670	50.7	2,231	9.5
Pori	564	-26.2	866	-29.9	271	63.3	317	-44.8	898	58.4	930	-22.4
Kanta-Häme	752	-0.5	863	16.8	800	25.2	944	21.3	601	13.8	1,832	12.7
Hämeenlinna	468	-19.9	437	20.1	781	26.4	364	-37.9	438	39.9	960	6.9
Pirkanmaa	8,408	2.7	6,567	1.2	3,754	12.2	4,369	10.2	5,276	5.9	8,369	5.8
Tampere	8,098	1.0	6,227	0.7	3,682	12.1	4,140	10.8	5,055	8.4	6,916	2.8
Päijät-Häme	1,495	-11.5	1,227	-4.7	920	4.5	2,215	16.2	1,350	-40.4	2,919	-19.3
Lahti	972	-19.1	780	-23.5	490	-10.4	1,476	4.8	1,016	-32.3	1,815	-20.0
Kymenlaakso	1,013	-25.8	1,172	-3.3	162	38.5	364	15.6	1,084	35.5	2,430	-12.1
Kouvola	385	-28.2	396	-45.1	70	70.7	201	50.0	381	68.6	1,391	10.4
South Karelia	820	-31.2	865	-1.4	249	3.8	802	105.6	1,773	128.5	3,165	0.9
Lappeenranta	430	8.3	560	-6.7	215	17.5	674	134.8	425	-22.4	2,177	22.4
Etelä-Savo	968	11.0	1,158	-0.9	389	25.5	212	-7.8	591	-34.8	1,496	-24.6
Mikkeli	416	1.7	537	-6.8	196	43.1	123	29.5	346	-8.2	965	-33.2
Pohjois-Savo	5,055	186.7	1,215	-23.3	549	32.3	801	2.4	1,437	-23.7	3,759	18.9
Kuopio	4,453	199.7	977	-9.9	459	35.4	570	8.8	1,105	-21.5	2,703	23.4
North Karelia	669	-41.2	928	-26.2	613	-26.8	388	-76.0	1,133	-26.7	2,421	-24.9
Joensuu	570	-40.5	726	-27.0	408	-31.5	314	-71.5	566	-6.8	944	-12.5
Central Finland	5,298	42.0	9,036	-33.6	2,365	102.0	1,527	-6.0	3,849	-13.7	15,316	9.6
Jyväskylä	4,883	50.8	3,330	10.7	2,152	95.3	1,266	-16.3	1,750	-12.5	2,451	5.3
South Ostrobothnia	818	65.6	594	65.5	493	9.1	690	55.1	465	-3.1	2,397	32.6
Seinäjoki	491	113.5	309	89.6	389	-7.8	198	10.0	271	-19.1	1,151	18.3
Ostrobothnia	1,852	7.2	1,286	2.6	790	44.7	2,818	2.9	2,379	1.8	2,756	50.7
Vaasa	1,557	3.0	1,132	1.4	724	51.8	2,617	5.8	1,824	4.5	1,821	27.2
Central Ostrobothnia	473	22.9	145	10.7	114	-37.0	387	13.2	285	68.6	832	-31.7
Kokkola	463	27.5	144	23.1	114	-37.0	375	9.6	247	48.8	372	18.1
North Ostrobothnia	6,190	16.9	4,933	-3.3	3,106	37.6	6,585	-16.4	9,887	34.7	5,252	18.9
Kuusamo	630	0.8	1,034	0.2	1,755	107.0	504	-6.7	2,759	103.2	631	24.5
Oulu	5,164	31.8	2,978	-7.9	1,243	-6.5	5,507	-18.6	2,999	38.5	2,019	-11.6
Kainuu	1,511	283.5	4,956	10.4	1,121	11.9	865	-15.6	490	-1.4	806	-59.6
Kajaani	232	79.8	232	95.0	109	18.5	232	18.4	189	64.3	449	-23.6
Lapland	14,855	41.7	113,618	17.9	44,362	4.8	42,683	-8.1	42,405	23.0	5,561	-7.4
Rovaniemi	6,340	33.6	26,853	16.3	17,225	13.6	10,382	0.1	6,011	20.1	1,720	-21.4
Åland	623	-6.3	453	18.0	113	-27.6	1,682	-29.6	252	-35.2	2,896	26.7
Maarianhamina	516	-13.0	384	74.5	103	-27.5	1,484	-27.8	241	-5.9	1,318	32.9

**Appendix table 9.1. Capacity of accommodation establishments and capacity utilization by type of establishment in 2016**

Whole year on average	Number of establishments	Number of rooms	Number of bed-places	Occupancy rate of bedrooms, %	Change of room occupancy rate, %-units	Room price, euros (incl. VAT 10 %)
All accommodation establishments	1,158	60,433	151,018	49.7	3.0	95.20
Hotels	608	50,287	109,998	54.0	3.2	96.96
Similar establishments	98	1,921	4,909	22.6	3.2	58.84
Holiday villages	313	6,281	28,449	29.5	3.4	71.93
Camping sites	139	1,944	7,662	29.2	-0.3	.
Youth hostels	31	644	1,786	32.7	-4.0	60.70

**Appendix table 9.2. Capacity of accommodation establishments and capacity utilization by type of establishment, May-August 2016**

May-August on average	Number of establishments	Number of rooms	Number of bed-places	Occupancy rate of bedrooms, %	Change of room occupancy rate, %-units	Room price, euros (incl. VAT 10 %)
All accommodation establishments	1,295	63,987	161,761	52.4	2.1	94.43
Hotels	619	50,994	111,291	57.8	2.3	96.59
Similar establishments	112	2,427	6,018	27.8	1.9	59.34
Holiday villages	353	7,176	31,634	30.1	1.2	66.23
Camping sites	211	3,390	12,819	34.2	0.7	.
Youth hostels	36	802	2,157	37.2	-4.8	62.67

**Appendix table 10.1. Capacity of accommodation establishments by type of establishment in 2016**

	Establishments	Rooms	Bed-places	Caravan places
All accommodation establishments	1,368	65,754	162,482	20,806
Hotels	653	53,789	116,400	2,248
Residential hotel	33	1,170	3,355	50
Conference hotel	90	16,954	32,010	20
Spa	43	5,993	13,997	319
Holiday resort	168	7,908	18,724	1,082
Urban hotel	212	14,795	28,700	231
Other hotel	107	6,969	19,614	546
Similar establishments	119	2,343	5,811	463
Holiday villages	328	5,979	27,067	1,802
Camping sites	230	2,774	10,874	16,054
Youth hostels	38	869	2,330	239

**Appendix table 10.2. Capacity of accommodation establishments by opening season in 2016**

		Establishments	Rooms	Bed-places	Caravan places
All accommodation establishments	Total	1,368	65,754	162,482	20,806
	Open year-round	1,084	59,788	144,575	13,451
	Open part of the year	284	5,966	17,907	7,355
Hotels	Total	653	53,789	116,400	2,248
	Open year-round	617	51,829	112,162	2,154
	Open part of the year	36	1,960	4,238	94
Similar establishments	Total	119	2,343	5,811	463
	Open year-round	94	1,702	4,369	379
	Open part of the year	25	641	1,442	84
Holiday villages	Total	328	5,979	27,067	1,802
	Open year-round	253	4,897	22,869	1,281
	Open part of the year	75	1,082	4,198	521
Camping sites	Total	230	2,774	10,874	16,054
	Open year-round	92	798	3,545	9,453
	Open part of the year	138	1,976	7,329	6,601
Youth hostels	Total	38	869	2,330	239
	Open year-round	28	562	1,630	184
	Open part of the year	10	307	700	55

**Appendix table 10.3. Capacity of accommodation establishments by number of bed-places in 2016**

		Establishments	Rooms	Bed-places	Caravan places
All accommodation establishments	Total	1,368	65,754	162,482	20,806
	0 - 49	588	6,395	17,546	12,015
	50 - 99	345	8,568	23,615	4,046
	100 - 249	259	17,085	41,076	3,200
	250 -	176	33,706	80,245	1,545
Hotels	Total	653	53,789	116,400	2,248
	0 - 49	158	2,636	5,397	393
	50 - 99	151	5,127	10,817	664
	100 - 249	189	14,636	30,831	761
	250 -	155	31,390	69,355	430
Similar establishments	Total	119	2,343	5,811	463
	0 - 49	77	1,076	2,520	351
	50 - 99	34	916	2,233	80
	100 -	8	351	1,058	32
Holiday villages	Total	328	5,979	27,067	1,802
	0 - 49	187	1,551	5,767	812
	50 - 99	83	1,205	5,395	215
	100 -	58	3,223	15,905	775
Camping sites	Total	230	2,774	10,874	16,054
	0 - 49	145	901	3,239	10,413
	50 - 99	66	1,100	4,464	2,932
	100 -	19	773	3,171	2,709
Youth hostels	Total	38	869	2,330	239
	0 - 49	21	231	623	46
	50 - 99	11	220	706	155
	100 -	6	418	1,001	38

**Appendix table 10.4. Capacity of accommodation establishments by number of rooms in 2016**

		Establishments	Rooms	Bed-places	Caravan places
All accommodation establishments	Total	1,368	65,754	162,482	20,806
	0 - 19	677	6,988	25,521	14,477
	20 - 49	331	10,093	27,212	3,937
	50 - 99	166	11,998	27,962	1,904
	100 -	194	36,675	81,787	488
Hotels	Total	653	53,789	116,400	2,248
	0 - 19	121	1,703	4,221	347
	20 - 49	204	6,476	14,737	951
	50 - 99	146	10,703	23,046	560
	100 -	182	34,907	74,396	390
Similar establishments	Total	119	2,343	5,811	463
	0 - 19	73	893	2,613	231
	20 - 49	41	1,170	2,719	222
	50 -	5	280	479	10
Holiday villages	Total	328	5,979	27,067	1,802
	0 - 19	259	2,394	10,882	971
	20 - 49	49	1,419	6,138	614
	50 -	20	2,166	10,047	217
Camping sites	Total	230	2,774	10,874	16,054
	0 - 19	199	1,722	6,871	12,875
	20 - 49	27	749	2,845	1,992
	50 -	4	303	1,158	1,187
Youth hostels	Total	38	869	2,330	239
	0 - 19	25	276	934	53
	20 - 49	10	279	773	158
	50 -	3	314	623	28

## Inquiries

Ossi Nurmi                      029 551 2984  
Director in charge:  
Reetta Moilanen

liikenne.matkailu@stat.fi  
www.stat.fi  
Source: Accommodation Statistics. Statistics Finland