

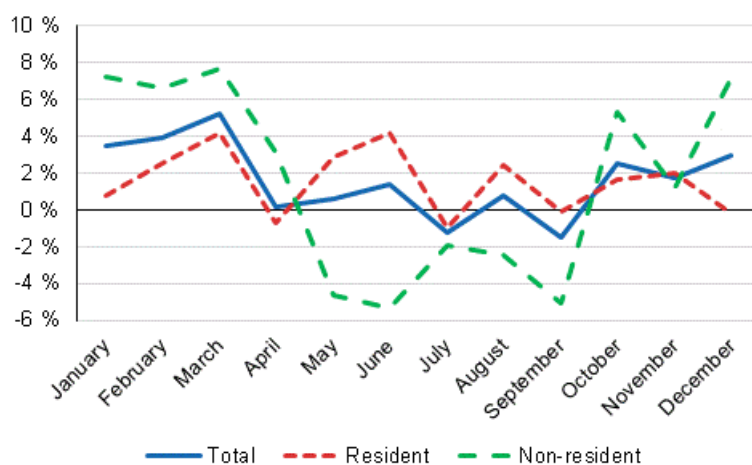
# Accommodation statistics 2018

## Demand for accommodation services grew by 1.5 per cent in 2018

In 2018, accommodation establishments in Finland recorded over 22 million overnight stays, of which domestic tourists accounted for around 15.4 million and foreign tourists for good 6.8 million. The foreign and domestic demand for accommodation services grew both by 1.5 per cent from the previous year. The total demand for accommodation services grew equally much, or in total by 1.5 per cent in 2018.

The demand for accommodation services turned to growth starting from 2016 and still grew strongly in 2017. Last year, the growth in demand for accommodation services continued moderately in every month of 2018 except for July and September, when demand went down by one per cent in both. The biggest growth percentages came in the early part of the year, when demand grew in January to February by around four per cent in both and in March, when the growth was five per cent compared to 2017. In October and December the growth was approximately three per cent and in November around two per cent. In other months demand for accommodation services grew by one per cent or remained on level with 2017. These figures are data from Statistics Finland's statistics on accommodation establishments and they have been collected from accommodation establishments with at least 20 beds or caravan pitches with electricity connection.

### Year-on-year changes in nights spent (%) by month 2018/2017



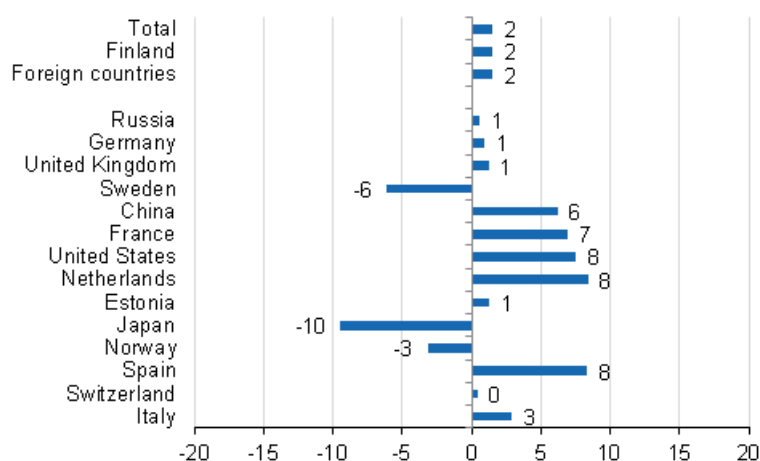
## Russians still formed the largest group of foreign visitors in accommodation establishments in 2018

Russians were still the largest group of foreign tourists in Finnish accommodation establishments in 2018. A total of 826,000 overnight stays were recorded for them, which was nearly one per cent more than in the year before. The share of Russians among all overnight stays by foreign tourists remained at 12 per cent in 2018 just like in 2017. Germans came second with good 628,000 overnight stays. Their overnight stays increased by 0.9 per cent year-on-year. British tourists rose to the third biggest group surpassing Swedes with their 593,000 overnight stays. The number was 1.2 per cent higher than in 2017. British visitors were followed by Swedes whose number of overnight stays at accommodation establishments was 560,000. However, overnight stays by Swedish tourists decreased by 6.2 per cent compared with 2017.

Nearly 333,000 overnight stays were recorded for Chinese tourists, which made them the fifth largest group after Swedes. Overnight stays recorded for French visitors increased by 6.9 per cent and totalled good 299,000 at accommodation establishments. Among the most important countries of inbound tourism to Finland, the biggest growth percentages came from the United States, the Netherlands and Spain. Visitors from the United States spent 7.5 per cent more nights in Finland and their overnight stays amounted to almost 289,000. Overnight stays by Dutch tourists increased by 8.4 per cent and they amounted to good 246,000. The number of overnight stays by Spanish visitors was 8.3 per cent up on the previous year, but their stays remained at 176,000 nights. Estonian tourists reached nearly 222,000 overnight stays and Japanese visitors slightly under 216,000. Overnight stays by tourists from Estonia increased by 1.3 per cent while those by Japanese tourists decreased by 9.5 per cent.

Examined by continent, Asia exceeded the one million mark for overnight stays for the first time in 2017. Last year did not differ from the previous year, because Finnish accommodation establishments recorded slightly under 1.1 million overnight stays for Asians. Overnight stays by Chinese and Japanese visitors covered 51 per cent of all overnightings of the whole Asia. Overnight stays by Japanese tourists diminished throughout last year, which partly had an effect on that overnight stays by visitors from Asian countries went up by just 1.7 per cent in 2018. Nearly 878,000 overnight stays were recorded for the Nordic countries, which was 5.6 per cent down on the year before. Examined by continent, the biggest growth percentage came from Oceania, 13.0 per cent and good 100,000 overnight stays. In all, 0.8 per cent more overnight stays were recorded for visitors from EU countries than in 2017, the number of nights rising to 3.6 million. Tourism from America increased by 6.0 per cent and overnight stays amounted to good 401,000. Overnight stays recorded for African visitors numbered nearly 31,000 in 2018, which was 9.1 per cent more than in 2017.

### Change in overnight stays 2018 / 2017, %

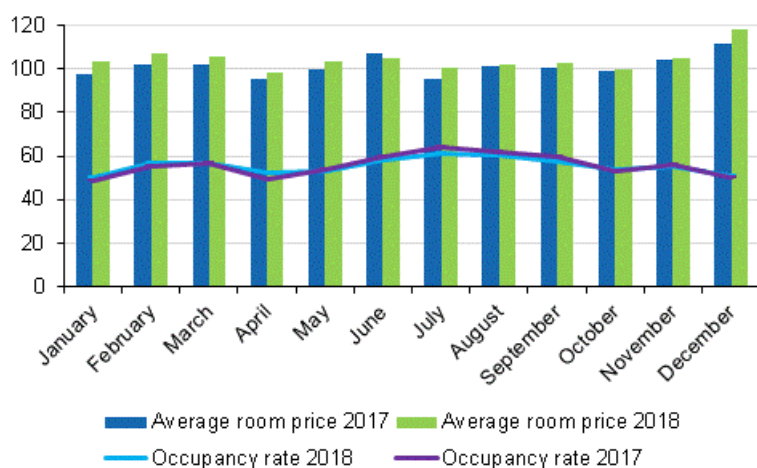


## Number of nights spent at hotels totalled good 17.7 million in 2018

In 2018, the total number of nights spent in hotels was good 17.7 million, which was 1.4 per cent higher than in 2017. In total, 12 million overnight stays were recorded for resident tourists and around 5.7 million for non-resident tourists. The overnight stays of resident visitors increased by 1.5 per cent and those of non-resident visitors by one per cent from 2017. Overnight stays at hotels covered almost 80 per cent of all overnight stays at accommodation establishments. The share of foreign tourists of overnight stays in hotels was 32 per cent and 31 per cent of all overnight stays at accommodation establishments.

The occupancy rate of hotel rooms for the whole country was 55.4 per cent in 2018. One year earlier it was 55.9 per cent. The average price of a hotel room has been growing since 2011, when the average price was EUR 88. In 2018, the average price of a hotel room was EUR 104.

### Hotel room occupancy rate and the monthly average price in 2017 and 2018



## Regional development of overnight stays in 2018

In Mainland Finland, the growth in overnight stays was in 2018 biggest in Päijät-Häme, where 9.2 per cent more overnight stays were recorded than in 2017. In South Ostrobothnia, overnight stays went up by 6.3 per cent. Overnight stays in Central Finland and Kainuu grew by around four per cent and in North Karelia, North Ostrobothnia and Lapland by about three per cent. The capacity of Päijät-Häme remained on level with the year 2017. The capacity of accommodation establishments in South Ostrobothnia, Central Finland, Kainuu and Lapland grew somewhat, while the capacity in North Karelia and North Ostrobothnia went down slightly. In addition, overnight stays in South Karelia increased by two per cent and the number of overnight stays in Kanta-Häme grew by around one per cent. Overnight stays in the regions of Satakunta and Pirkanmaa remained almost on level with the previous year. In all other regions, the numbers of overnight stays went down last year. The biggest decreases in overnight stays were recorded in Kymenlaakso, 5.8 per cent, and in Southwest Finland, 4.3 per cent. Overnight stays in Central Ostrobothnia fell by 2.6 per cent and in South Savo and Ostrobothnia by around two per cent in both. In North Savo, one per cent fewer overnight stays were recorded than in 2017.

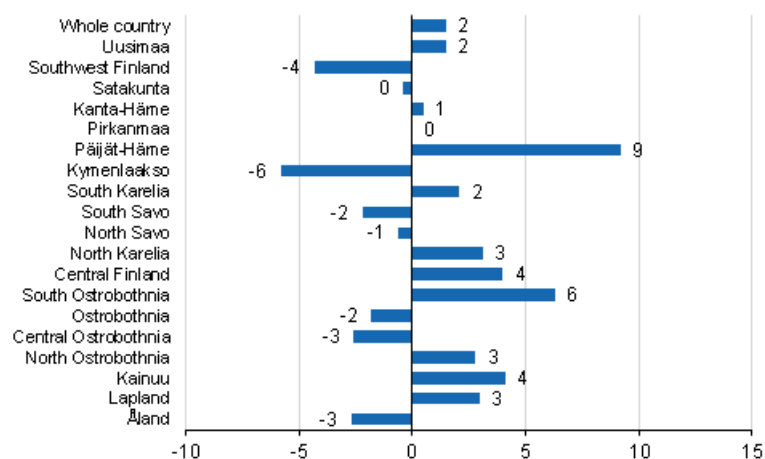
In Åland, overnight stays decreased by 2.7 per cent from the year before.

In absolute numbers, overnight stays in accommodation establishments increased most in Uusimaa, where good 97,000 more overnight stays were recorded, and in Lapland, where overnight stays grew by almost 87,000 from 2017.

The share of overnight stays by foreign visitors in all overnight stays was almost 47 per cent in the region of Uusimaa, and 52 per cent in Lapland. The share of overnight stays by non-resident tourists in South Karelia was around 33 per cent, in Ostrobothnia and South Savo 22 to 23 per cent. The shares were 19 to

21 per cent in Southwest Finland and Kymenlaakso. In North Ostrobothnia the share of overnight stays by non-resident tourists was 17 per cent. In Uusimaa, Russians barely managed to maintain their top position among all tourists. Accommodation establishments recorded around 269,000 overnight stays for them and good 247,000 for Germans. In Lapland, the biggest group of foreign visitors were British tourists for whom good 285,000 overnight stays were recorded. In North Ostrobothnia, South Karelia, South Savo and Kymenlaakso, Russians were the biggest group of foreign tourists while in Ostrobothnia and Southwest Finland, Swedes took the first position.

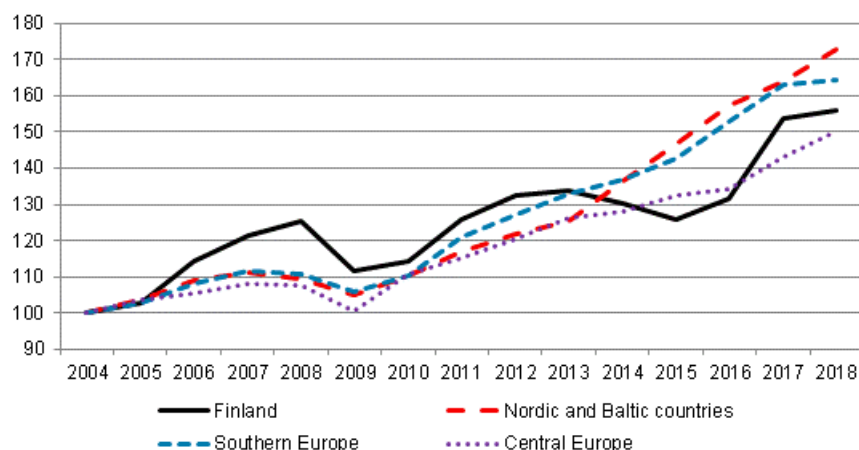
### Change in overnight stays by region 2018/2017,%



### Growth in overnight stays by foreign visitors in Finland weaker than elsewhere in Europe in 2018

In 2018, overnight stays by foreign visitors recorded in Europe was 2.4 per cent higher than in the previous year, while a growth of only 1.5 per cent was attained for foreign visitors in Finland. In our neighbouring regions, the Nordic and Baltic countries, overnight stays by foreign visitors increased by 5.3 per cent, while the growth amounted to 4.7 per cent in Central Europe. Only in Southern Europe the growth in overnight stays of foreign visitors was weaker than in Finland, at 0.8 per cent. In the 2010s, overnight stays by foreign visitors in Europe have grown on average by around 4.9 per cent per year and in Finland on average by 4.0 per cent per year. In Finland, the development of overnight stays by foreigners was negative in 2014 to 2015.

### Nights spent by non-residents in Europe (2004 = 100)

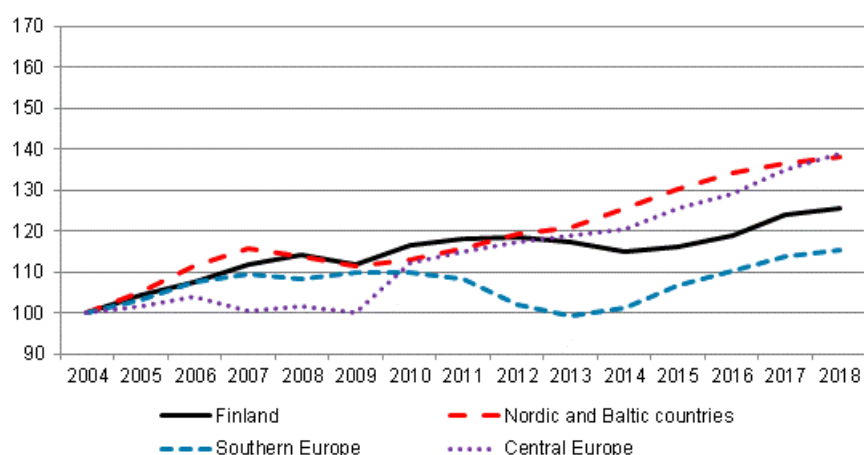


## Growth in domestic overnight stays weak in Europe

Domestic overnight stays grew in Finland by 1.5 per cent and in Europe by 2.4 per cent in 2018. In our neighbouring regions of Nordic and Baltic countries, the growth in domestic overnight stays remained at 1.1 per cent. In Central Europe, domestic overnight stays grew by 3.0 per cent and in Southern Europe by 1.6 per cent. Over the 2010s, domestic overnight stays have grown in Europe yearly by an average of 2.6 per cent and in Finland by only one-half of this, 1.3 per cent.

The information on overnight stays in other European countries is based on monthly data on the use of capacity at European accommodation establishments collected by Eurostat.

### Nights spent by residents in Europe (2004 = 100)



## Number of accommodation establishments decreased but the room and bed capacity grew in 2018

In 2018, the number of accommodation establishments contained in the statistics went down by 11, but the room capacity increased by 837 rooms and the number of beds by 2,576 beds. The capacity grew in hotels and guest houses, while in camping sites, holiday villages and hostels the number of rooms and beds went down compared with 2017. Statistics Finland's register of accommodation establishments has been updated with new and closed establishments and permanent changes in capacity in 2018.

In 2018, the statistics covered a total of 1,372 accommodation establishments: 675 hotels, 113 guest houses, 316 holiday villages, 219 camping sites and 49 hostels. Holiday villages of hotel calibre are included in hotels. The accommodation establishments had in total 69,671 rooms (or cottages) with a total of 172,668 beds. In addition to the room and bed capacity, the accommodation establishments had 19,886 caravan pitches with electricity connection, 15,299 of which were located at camping sites.

When the capacity of accommodation establishments is viewed according to the number of rooms, the statistics contained 985 establishments with fewer than 50 rooms and 387 establishments with at least 50 rooms in 2018. Measured by bed capacity, there were 906 establishments with fewer than one hundred beds and 466 establishments with at least one hundred beds.

In 2018, there were 1,103 accommodation establishments that were open year round and 269 establishments that were open part of the year; these were mostly camping sites and holiday villages.

# Contents

## Tables

### Appendix tables

Appendix table 1. Capacity and its utilization in 2018.....	8
Appendix table 2. Nights spent in all establishments in 2018.....	9
Appendix table 3. Hotel capacity and capacity utilization in 2018.....	10
Appendix table 4. Nights spent in hotels in 2018.....	11
Appendix table 5. Visitor arrivals and nights spent by country of residence in 2018.....	12
Appendix table 6. Nights spent in all establishments by month in 2018.....	13
Appendix table 7.1. Nights spent by non-residents and annual change (%) in all establishments in 2018.....	14
Appendix table 7.2. Nights spent by non-residents and annual change (%) in all establishments in 2018.....	15
Appendix table 8.1. Nights spent by non-residents and annual change (%) in hotels in 2018.....	16
Appendix table 8.2. Nights spent by non-residents and annual change (%) in hotels in 2018.....	17
Appendix table 9.1. Capacity of accommodation establishments and capacity utilization by type of establishment in 2018.....	18
Appendix table 9.2. Capacity of accommodation establishments and capacity utilization by type of establishment, May-August 2018.....	18
Appendix table 10.1. Capacity of accommodation establishments by type of establishment in 2018.....	18
Appendix table 10.2. Capacity of accommodation establishments by opening season in 2018.....	19
Appendix table 10.3. Capacity of accommodation establishments by number of bed-places in 2018.....	19
Appendix table 10.4. Capacity of accommodation establishments by number of rooms in 2018.....	20

## Appendix tables

**Appendix table 1. Capacity and its utilization in 2018**

Region	Number of establishments on average	Number of bedrooms on average	Occupancy rate of bedrooms, %	Change of the occupancy rate compared to previous year, %-units	<sup>1)</sup> Average price of night spent, in euros (incl. VAT 10 %)
Whole country	1,173	64,133	51.7	-0.2	56.06
Mainland Finland	1,124	62,829	52.1	-0.1	56.18
Uusimaa	168	17,037	68.1	0.8	69.67
Espoo	15	1,446	59.9	1.1	55.08
Helsinki	72	9,649	76.0	3.0	75.19
Vantaa	16	2,908	70.8	-2.5	65.75
Southwest Finland	73	3,674	51.7	-0.8	54.95
Turku	22	2,153	61.2	1.2	59.96
Satakunta	42	1,495	45.0	-1.0	55.49
Pori	13	728	51.3	0.1	53.00
Kanta-Häme	26	1,530	36.1	-3.2	46.48
Hämeenlinna	11	748	42.8	-1.2	46.27
Pirkanmaa	69	4,606	53.4	0.3	57.07
Tampere	.	.	.	.	.
Päijät-Häme	35	1,963	45.2	3.4	47.65
Lahti	10	934	53.7	1.0	53.55
Kymenlaakso	27	1,100	41.1	-3.6	55.36
Kouvola	13	547	41.0	-3.1	49.50
South Karelia	32	1,941	48.8	1.1	43.99
Lappeenranta	12	1,197	54.8	1.7	44.88
South Savo	77	2,253	42.6	1.5	42.06
Mikkeli	19	708	44.2	-4.2	46.34
North Savo	47	2,603	46.9	1.1	49.94
Kuopio	22	1,509	51.7	0.6	53.86
North Karelia	51	1,497	46.0	1.7	51.63
Joensuu	.	.	.	.	.
Central Finland	54	3,299	47.5	-2.3	51.27
Jyväskylä	17	1,606	55.4	-3.8	67.97
South Ostrobothnia	48	1,967	42.1	-1.5	42.81
Seinäjoki	.	.	.	.	.
Ostrobothnia	31	1,456	44.4	-2.7	59.67
Vaasa	.	.	.	.	.
Central Ostrobothnia	18	586	39.3	-0.1	57.61
Kokkola	.	.	.	.	.
North Ostrobothnia	105	4,938	45.4	0.8	43.58
Kuusamo	35	1,408	42.8	0.7	32.31
Oulu	.	.	.	.	.
Kainuu	40	2,233	44.4	0.4	27.10
Kajaani	.	.	.	.	.
Lapland	180	8,652	44.7	-1.5	55.67
Rovaniemi	22	1,648	57.5	-4.1	.
Åland	49	1,304	32.5	-3.5	..
Maarianhamina	13	643	42.6	-4.8	..

1) [...] Data too uncertain for presentation.



**Appendix table 2. Nights spent in all establishments in 2018**

Region	Nights spent, total	Change of nights spent, total, %	Nights spent, residents	Change of nights spent, residents, %	Nights spent, non-residents	Change of nights spent, non-residents, %
Whole country	22,235,084	1.5	15,392,495	1.5	6,842,589	1.5
Mainland Finland	21,841,985	1.5	15,225,330	1.5	6,616,655	1.7
Uusimaa	6,546,400	1.5	3,484,380	1.5	3,062,020	1.6
Espoo	466,528	7.1	284,153	14.9	182,375	-3.2
Helsinki	4,167,982	-0.2	1,858,942	-3.0	2,309,040	2.2
Vantaa	1,115,788	2.1	701,956	4.1	413,832	-1.2
Southwest Finland	1,220,911	-4.3	988,478	-3.2	232,433	-8.8
Turku	790,258	-2.6	627,211	-1.8	163,047	-5.5
Satakunta	418,040	-0.4	361,932	4.6	56,108	-23.8
Pori	245,384	4.3	219,133	9.3	26,251	-24.6
Kanta-Häme	374,282	0.5	338,864	2.6	35,418	-15.5
Hämeenlinna	204,030	-0.4	185,016	1.9	19,014	-18.3
Pirkanmaa	1,562,950	-0.0	1,313,407	-1.4	249,543	7.7
Tampere	.	.	.	.	.	.
Päijät-Häme	621,925	9.2	531,147	15.4	90,778	-16.8
Lahti	285,427	1.3	225,767	3.9	59,660	-7.6
Kymenlaakso	283,266	-5.8	222,904	-7.9	60,362	2.8
Kouvola	135,478	-2.8	119,945	-0.2	15,533	-19.6
South Karelia	707,166	2.1	476,844	2.3	230,322	1.6
Lappeenranta	443,317	0.0	333,856	0.7	109,461	-2.1
South Savo	677,684	-2.2	522,275	-1.4	155,409	-4.7
Mikkeli	205,877	-7.0	161,117	-8.1	44,760	-2.8
North Savo	837,658	-0.6	735,684	-2.1	101,974	11.5
Kuopio	533,836	-1.5	474,786	-2.5	59,050	7.1
North Karelia	470,391	3.1	399,469	2.8	70,922	4.9
Joensuu	.	.	.	.	.	.
Central Finland	1,086,882	4.0	939,962	6.2	146,920	-8.3
Jyväskylä	479,763	4.7	402,910	6.3	76,853	-2.8
South Ostrobothnia	709,192	6.3	676,854	7.0	32,338	-6.6
Seinäjoki	.	.	.	.	.	.
Ostrobothnia	380,189	-1.8	295,511	-2.3	84,678	0.3
Vaasa	.	.	.	.	.	.
Central Ostrobothnia	145,542	-2.6	130,324	-2.4	15,218	-4.3
Kokkola	.	.	.	.	.	.
North Ostrobothnia	1,849,701	2.8	1,528,405	2.5	321,296	3.8
Kuusamo	597,118	1.6	442,745	-0.4	154,373	7.9
Oulu	.	.	.	.	.	.
Kainuu	953,969	4.1	846,548	2.1	107,421	23.4
Kajaani	.	.	.	.	.	.
Lapland	2,995,837	3.0	1,432,342	0.2	1,563,495	5.7
Rovaniemi	663,529	5.2	219,790	1.8	443,739	6.9
Åland	393,099	-2.7	167,165	0.9	225,934	-5.2
Maarianhamina	197,954	-1.4	103,766	0.1	94,188	-2.9

**Appendix table 3. Hotel capacity and capacity utilization in 2018**

Region / municipality	Number of establishments on average	Number of bedrooms on average	Occupancy rate of bedrooms, %	Change compared to previous year, %-units	Room price, euros (incl. VAT 10 %)	<sup>1)</sup> RevPAR, euros (incl. VAT 10 %)
Whole country	628	53,161	55.4	-0.5	104.09	57.64
Mainland Finland	613	52,331	55.7	-0.4	104.09	57.93
Uusimaa	127	15,621	69.1	0.7	112.49	77.75
Espoo	12	1,290	58.5	0.6	89.96	52.62
Helsinki	63	9,380	76.1	3.1	118.66	90.35
Vantaa	13	2,585	69.6	-3.4	108.58	75.60
Southwest Finland	38	2,868	57.0	-1.8	97.08	55.38
Turku	18	1,948	63.3	-0.4	98.25	62.21
Satakunta	25	1,143	51.8	-1.1	94.06	48.76
Pori	9	606	54.9	-0.5	95.59	52.45
Kanta-Häme	16	1,360	37.4	-4.7	86.12	32.18
Hämeenlinna	7	672	44.1	-1.9	85.46	37.66
Pirkanmaa	42	3,951	56.4	0.4	104.19	58.73
Tampere	25	3,031	62.1	1.1	107.01	66.41
Päijät-Häme	15	1,754	47.4	3.4	84.38	39.99
Lahti	7	898	54.3	0.6	86.25	46.80
Kymenlaakso	15	880	43.6	-6.4	94.79	41.34
Kouvola	7	428	44.2	-4.6	90.10	39.82
South Karelia	13	1,524	51.1	1.5	98.86	50.48
Lappeenranta	7	965	55.6	1.8	94.50	52.58
South Savo	28	1,567	46.4	1.2	85.92	39.88
Mikkeli	8	562	45.8	-5.0	85.38	39.07
North Savo	26	2,290	48.5	1.5	93.63	45.46
Kuopio	13	1,341	53.0	1.2	101.44	53.73
North Karelia	21	1,182	50.8	1.5	93.77	47.59
Joensuu	6	619	60.9	-0.6	91.69	55.83
Central Finland	27	2,773	50.8	-2.6	98.89	50.26
Jyväskylä	12	1,439	57.9	-3.8	103.17	59.69
South Ostrobothnia	26	1,664	46.5	-2.1	82.50	38.34
Seinäjoki	7	625	53.7	-0.2	95.75	51.38
Ostrobothnia	21	1,282	48.9	-2.8	97.37	47.62
Vaasa	8	839	56.4	-2.6	98.74	55.73
Central Ostrobothnia	10	488	42.8	0.4	93.35	39.97
Kokkola	5	366	50.5	-0.5	96.06	48.53
North Ostrobothnia	51	3,582	51.0	1.0	95.42	48.63
Kuusamo	12	834	41.3	0.7	101.09	41.79
Oulu	11	1,514	65.0	2.6	99.06	64.43
Kainuu	18	1,746	50.2	0.8	62.70	31.47
Kajaani	6	412	42.1	-0.0	85.38	35.94
Lapland	94	6,654	48.0	-2.5	124.52	59.74
Rovaniemi	19	1,601	58.0	-4.2	.	.
Åland	15	830	37.5	-5.0	..	..
Maarianhamina	7	533	46.3	-5.1	..	..

1) RevPar = Average accommodation sales revenue per available room. Calculation formula: RevPar = Average room price

\*Occupancy rate. [...] Data too uncertain for presentation.

**Appendix table 4. Nights spent in hotels in 2018**

Region / municipality	Nights spent, total	Change of nights spent, total, %	Nights spent, residents	Change of nights spent, residents, %	Nights spent, non-residents	Change of nights spent, non-residents, %
Whole country	17,723,997	1.4	12,012,270	1.5	5,711,727	1.0
Mainland Finland	17,507,460	1.4	11,903,785	1.5	5,603,675	1.2
Uusimaa	5,878,190	0.6	3,059,958	0.5	2,818,232	0.8
Espoo	392,008	3.5	236,363	11.2	155,645	-6.5
Helsinki	3,909,527	-0.7	1,746,968	-2.7	2,162,559	1.0
Vantaa	971,062	2.5	593,550	1.7	377,512	3.8
Southwest Finland	968,564	-2.2	784,639	-0.9	183,925	-7.4
Turku	719,431	-0.6	574,733	-0.1	144,698	-2.2
Satakunta	300,223	-0.1	250,488	6.5	49,735	-24.1
Pori	175,335	0.5	152,115	5.9	23,220	-24.8
Kanta-Häme	323,432	-1.4	290,827	0.7	32,605	-16.4
Hämeenlinna	177,548	-3.7	159,383	-1.5	18,165	-19.8
Pirkanmaa	1,317,228	0.0	1,095,888	-2.0	221,340	11.5
Tampere	1,070,219	1.6	865,793	-0.8	204,426	13.3
Päijät-Häme	519,432	11.6	439,549	18.9	79,883	-16.7
Lahti	271,699	1.4	213,649	4.2	58,050	-7.5
Kymenlaakso	195,260	-2.8	152,041	-4.0	43,219	1.4
Kouvola	99,652	-3.3	86,400	-0.8	13,252	-17.1
South Karelia	561,671	0.7	387,283	3.2	174,388	-4.6
Lappeenranta	360,200	-0.4	274,686	0.2	85,514	-2.5
South Savo	406,257	-7.2	346,213	-5.8	60,044	-14.6
Mikkeli	143,757	-11.6	120,622	-10.9	23,135	-15.2
North Savo	700,021	-1.3	626,902	-2.7	73,119	12.4
Kuopio	450,502	-2.5	407,029	-3.8	43,473	11.9
North Karelia	350,097	3.7	303,449	3.0	46,648	8.4
Joensuu	180,874	0.2	153,211	1.1	27,663	-4.9
Central Finland	930,249	4.0	800,412	5.5	129,837	-4.4
Jyväskylä	444,111	1.1	373,847	3.2	70,264	-9.0
South Ostrobothnia	514,660	5.9	489,928	6.6	24,732	-6.3
Seinäjoki	173,896	5.3	161,797	6.3	12,099	-6.3
Ostrobothnia	323,423	-2.1	246,207	-2.8	77,216	0.2
Vaasa	249,032	0.4	187,446	-1.2	61,586	5.3
Central Ostrobothnia	106,314	-1.8	96,546	-2.5	9,768	5.0
Kokkola	92,376	0.1	83,697	-0.3	8,679	3.9
North Ostrobothnia	1,186,634	5.8	970,373	6.4	216,261	3.1
Kuusamo	302,885	12.9	214,819	12.3	88,066	14.5
Oulu	575,371	2.3	488,500	3.0	86,871	-1.6
Kainuu	770,390	3.5	693,865	1.2	76,525	30.5
Kajaani	91,712	0.0	83,036	-0.2	8,676	2.4
Lapland	2,155,415	2.9	869,217	-0.1	1,286,198	5.0
Rovaniemi	626,555	4.8	207,153	2.9	419,402	5.8
Åland	216,537	-0.8	108,485	4.0	108,052	-5.2
Maarianhamina	161,239	-0.4	87,992	1.9	73,247	-3.1

**Appendix table 5. Visitor arrivals and nights spent by country of residence in 2018**

Country of residence	Visitor arrivals in all accommodation establishments	Nights spent in all accommodation establishments	Change of nights spent in all accommodation establishments, %	Nights spent in hotels	Change of nights spent in hotels, %
Total	11,967,117	22,235,084	1.5	17,723,997	1.4
Finland	8,742,953	15,392,495	1.5	12,012,270	1.5
Foreign countries	3,224,164	6,842,589	1.5	5,711,727	1.0
Russia	377,633	826,251	0.6	611,618	-2.2
Germany	304,387	628,449	0.9	504,460	-0.9
United Kingdom	229,992	593,034	1.2	513,620	-1.3
Sweden	323,195	560,027	-6.2	444,084	-6.3
China	202,697	332,546	6.2	317,300	5.3
France	105,691	299,432	6.9	258,347	7.6
United States	139,138	288,827	7.5	276,455	6.5
Netherlands	94,931	246,460	8.4	181,940	6.6
Estonia	95,442	222,387	1.3	152,729	6.8
Japan	113,000	215,746	-9.5	208,005	-10.3
Norway	102,708	193,065	-3.2	151,153	-5.8
Spain	72,689	175,907	8.3	149,372	7.7
Switzerland	71,245	168,048	0.4	119,106	-2.7
Italy	74,991	160,045	2.9	139,965	1.2
Denmark	62,737	107,731	-5.1	100,615	-2.4
Poland	38,205	105,345	-9.9	82,414	-14.0
Australia	43,608	94,058	13.9	87,592	13.6
Belgium	36,796	84,941	20.6	69,872	17.6
India	33,449	80,680	2.6	75,994	0.6
Austria	29,645	70,297	-0.7	59,379	-2.8
South Korea	32,803	59,911	16.1	55,906	15.8
Latvia	25,511	58,017	-1.3	38,114	8.1
Israel	16,813	53,362	-7.2	48,759	-9.6
Thailand	19,210	48,604	12.8	32,143	25.1
Lithuania	17,490	42,483	-17.2	27,673	14.5
Canada	17,870	41,711	-8.8	39,136	-9.7
Czech	17,592	41,088	5.9	34,541	8.8
Ireland	15,694	34,780	21.0	31,207	19.1
Portugal	13,256	32,834	34.5	28,116	28.4
Turkey	13,443	31,152	0.6	29,422	1.1
Taiwan	18,033	27,252	-2.9	24,498	-7.4
Brazil	11,984	26,636	8.1	24,653	5.6
Hungary	8,942	23,874	15.8	20,285	16.5

**Appendix table 6. Nights spent in all establishments by month in 2018**

Month	Nights spent, total	Change of nights spent, total, %	Nights spent, residents	Change of nights spent, residents, %	Nights spent, non-residents	Change of nights spent, non-residents, %
Total	22,235,084	1.5	15,392,495	1.5	6,842,589	1.5
January	1,527,219	3.5	855,836	0.8	671,383	7.2
February	1,689,248	3.9	1,090,314	2.5	598,934	6.6
March	1,902,277	5.2	1,328,022	4.2	574,255	7.7
April	1,540,579	0.2	1,171,951	-0.7	368,628	3.1
May	1,473,559	0.6	1,063,988	2.8	409,571	-4.6
June	2,153,225	1.4	1,566,994	4.2	586,231	-5.3
July	3,092,714	-1.2	2,292,617	-1.0	800,097	-1.9
August	2,320,537	0.8	1,565,824	2.5	754,713	-2.4
September	1,733,863	-1.5	1,269,835	-0.1	464,028	-5.0
October	1,559,403	2.5	1,172,017	1.6	387,386	5.3
November	1,486,285	1.8	1,048,291	2.0	437,994	1.2
December	1,756,175	3.0	966,806	-0.2	789,369	7.1
Spring (January-April)	6,659,323	3.3	4,446,123	1.8	2,213,200	6.5
Summer (May-August)	9,040,035	0.2	6,489,423	1.7	2,550,612	-3.3
Autumn (September-December)	6,535,726	1.4	4,456,949	0.8	2,078,777	2.6

**Appendix table 7.1. Nights spent by non-residents and annual change (%) in all establishments in 2018**

Region	Foreign countries		Russia		Germany		United Kingdom		Sweden		China	
Whole country	6,842,589	1.5	826,251	0.6	628,449	0.9	593,034	1.2	560,027	-6.2	332,546	6.2
Mainland Finland	6,616,655	1.7	822,469	0.5	613,692	0.4	591,213	1.2	387,937	-5.6	332,337	6.2
Uusimaa	3,062,020	1.6	269,307	4.0	247,439	5.3	201,359	-3.5	199,604	-7.6	204,591	-3.2
Espoo	182,375	-3.2	18,505	13.1	13,001	-26.9	9,780	-10.2	12,638	-4.4	16,897	9.6
Helsinki	2,309,040	2.2	209,205	6.9	189,454	10.0	159,054	-5.0	147,615	-8.9	113,095	-4.0
Vantaa	413,832	-1.2	21,950	-12.4	23,014	1.0	26,864	8.1	26,805	-7.6	62,948	-0.6
Southwest Finland	232,433	-8.8	15,880	-4.5	30,519	-11.1	9,814	-25.7	33,333	-5.3	5,083	30.4
Turku	163,047	-5.5	10,873	7.2	21,937	-13.4	7,529	-16.8	24,816	-4.3	3,789	25.8
Satakunta	56,108	-23.8	2,812	69.7	11,554	-39.3	3,310	-22.4	7,562	-28.0	657	47.0
Pori	26,251	-24.6	1,341	63.5	4,537	-49.4	1,893	-26.9	3,220	-27.5	444	198.0
Kanta-Häme	35,418	-15.5	3,316	-17.4	3,438	-33.5	1,508	-44.1	3,844	2.4	1,287	11.1
Hämeenlinna	19,014	-18.3	1,707	-19.1	1,698	-39.8	1,123	-47.7	2,077	-3.2	533	60.5
Pirkanmaa	249,543	7.7	17,326	-2.4	20,237	-8.1	11,418	0.1	23,287	9.3	7,370	8.5
Tampere	.	.	.	.	.	.	.	.	.	.	.	.
Päijät-Häme	90,778	-16.8	19,568	11.8	9,160	-15.0	4,218	-11.4	6,810	-15.8	2,955	-40.9
Lahti	59,660	-7.6	13,471	40.0	6,067	-5.4	2,793	-5.1	5,011	-11.8	1,661	22.6
Kymenlaakso	60,362	2.8	21,279	-0.8	5,699	8.8	3,679	15.4	2,934	1.2	636	40.7
Kouvola	15,533	-19.6	5,469	-5.6	1,785	-20.8	469	-10.0	1,063	-22.8	225	11.9
South Karelia	230,322	1.6	169,362	-2.2	5,546	-6.7	1,551	-21.0	4,747	23.6	1,616	10.8
Lappeenranta	109,461	-2.1	70,759	-12.2	4,024	6.5	1,169	-12.7	2,967	29.7	1,389	52.1
South Savo	155,409	-4.7	74,064	-7.1	21,946	7.6	2,256	-32.3	3,282	7.3	2,570	25.4
Mikkeli	44,760	-2.8	16,826	-15.8	3,020	5.4	791	-2.3	1,160	-9.4	1,008	38.3
North Savo	101,974	11.5	37,034	16.3	15,572	14.0	3,190	9.4	4,068	-21.6	2,675	134.2
Kuopio	59,050	7.1	22,522	8.2	8,028	22.0	2,338	20.6	2,657	-20.6	732	48.2
North Karelia	70,922	4.9	23,314	4.1	10,063	8.6	1,879	-10.0	2,845	-12.4	598	22.0
Joensuu	.	.	.	.	.	.	.	.	.	.	.	.
Central Finland	146,920	-8.3	18,912	-2.2	17,566	-18.9	6,392	-10.5	8,186	-15.2	3,051	92.2
Jyväskylä	76,853	-2.8	4,346	13.4	9,740	-24.0	5,361	-3.1	5,456	-8.5	2,131	48.9
South Ostrobothnia	32,338	-6.6	1,721	-11.1	2,058	-26.3	722	3.7	3,864	16.0	707	66.7
Seinäjoki	.	.	.	.	.	.	.	.	.	.	.	.
Ostrobothnia	84,678	0.3	1,309	-17.7	6,412	7.2	4,062	7.3	25,603	-1.3	792	8.3
Vaasa	.	.	.	.	.	.	.	.	.	.	.	.
Central Ostrobothnia	15,218	-4.3	574	57.3	1,422	-9.6	718	-4.5	2,042	-15.0	149	-37.7
Kokkola	.	.	.	.	.	.	.	.	.	.	.	.
North Ostrobothnia	321,296	3.8	55,956	-8.7	31,303	2.4	45,203	24.1	18,624	-1.6	11,691	59.5
Kuusamo	154,373	7.9	42,398	-7.6	7,689	6.4	34,982	35.7	1,943	6.4	6,273	78.3
Oulu	.	.	.	.	.	.	.	.	.	.	.	.
Kainuu	107,421	23.4	35,772	10.1	7,765	37.6	4,575	34.3	2,257	25.3	18,235	279.5
Kajaani	.	.	.	.	.	.	.	.	.	.	.	.
Lapland	1,563,495	5.7	54,963	-2.5	165,993	2.4	285,359	4.3	35,045	-2.6	67,674	6.3
Rovaniemi	443,739	6.9	19,558	1.1	28,819	-8.1	39,345	9.9	7,976	5.3	38,043	17.6
Åland	225,934	-5.2	3,782	15.9	14,757	24.6	1,821	20.8	172,090	-7.6	209	-12.6
Maarianhamina	94,188	-2.9	1,590	-0.3	4,597	22.8	1,088	6.7	73,705	-4.1	177	20.4

**Appendix table 7.2. Nights spent by non-residents and annual change (%) in all establishments in 2018**

Region	France		United States		Netherlands		Estonia		Japan		Norway	
Whole country	299,432	6.9	288,827	7.5	246,460	8.4	222,387	1.3	215,746	-9.5	193,065	-3.2
Mainland Finland	298,148	7.0	287,637	7.6	244,865	8.6	215,375	1.6	215,605	-9.4	189,254	-3.1
Uusimaa	78,348	0.1	209,830	7.7	73,120	2.5	90,909	5.5	154,126	-10.3	76,559	-2.5
Espoo	3,763	-2.5	5,902	-3.4	4,787	11.4	16,623	13.4	2,548	-0.7	3,256	-18.1
Helsinki	61,275	-1.3	176,753	8.2	56,338	5.3	47,956	6.9	137,616	-10.5	60,803	-2.4
Vantaa	9,955	8.7	24,172	6.6	7,999	0.9	14,883	0.1	12,176	-15.0	9,246	2.5
Southwest Finland	7,512	5.4	8,943	0.6	6,713	-6.3	18,683	-7.0	4,589	-9.2	7,318	26.3
Turku	5,093	-0.3	7,757	8.5	5,518	-4.3	7,069	-18.2	1,915	-6.4	5,682	31.6
Satakunta	3,212	-4.8	1,610	-10.7	1,720	-29.7	3,494	-13.8	605	-2.9	877	-27.9
Pori	747	3.8	792	-15.0	766	-38.9	2,020	37.6	318	2.3	481	-32.0
Kanta-Häme	773	-35.0	549	-43.1	611	-56.8	2,843	-4.5	451	-39.6	868	-45.0
Hämeenlinna	507	-5.8	439	-37.9	313	-71.9	820	-30.6	261	-59.7	399	-63.7
Pirkanmaa	8,336	16.1	11,195	1.3	7,136	3.2	13,530	-4.2	4,423	14.7	5,168	-5.9
Tampere	.	.	.	.	.	.	.	.	.	.	.	.
Päijät-Häme	2,057	-10.2	1,369	-16.1	2,633	30.3	5,677	-15.1	1,901	26.9	3,542	-49.2
Lahti	1,304	-15.2	1,075	6.3	1,998	31.6	3,948	13.7	529	-15.0	1,826	-59.1
Kymenlaakso	878	-42.0	1,275	6.6	3,411	151.7	4,777	2.7	137	-10.5	554	-40.7
Kouvola	363	-30.3	319	-45.5	217	-5.2	1,500	-24.4	30	-58.9	164	-75.7
South Karelia	805	-26.5	1,299	-20.0	1,790	-14.3	5,797	29.6	364	-17.1	557	-47.5
Lappeenranta	567	-26.1	774	-9.9	1,684	-10.1	2,462	-4.7	164	-31.7	445	-52.6
South Savo	2,752	-20.9	1,687	24.6	2,712	-2.9	8,191	28.1	646	-10.9	451	-43.9
Mikkeli	687	-30.6	347	-13.0	477	-29.1	5,218	33.4	243	-7.3	155	-47.3
North Savo	1,374	-15.1	1,835	-11.8	2,060	-21.5	4,777	-1.7	744	-15.5	927	-17.1
Kuopio	941	-10.6	1,395	-11.8	1,513	-19.6	2,623	-6.2	275	-32.9	705	-7.5
North Karelia	1,719	-8.4	1,115	-19.2	2,042	11.5	3,048	22.8	472	-31.0	1,208	-19.5
Joensuu	.	.	.	.	.	.	.	.	.	.	.	.
Central Finland	7,780	0.8	4,771	-10.1	12,958	28.1	19,578	-13.9	1,254	-16.8	1,806	5.4
Jyväskylä	3,295	6.9	4,201	-12.8	1,816	-13.1	2,564	-16.9	1,132	-15.7	1,499	3.9
South Ostrobothnia	925	-17.3	772	-36.0	970	48.5	3,268	44.3	736	70.0	870	-5.5
Seinäjoki	.	.	.	.	.	.	.	.	.	.	.	.
Ostrobothnia	2,514	18.3	2,497	-0.0	2,488	-16.4	3,810	25.5	695	-22.5	4,099	2.8
Vaasa	.	.	.	.	.	.	.	.	.	.	.	.
Central Ostrobothnia	319	31.3	725	62.9	385	-4.0	1,230	0.2	147	53.1	593	-4.7
Kokkola	.	.	.	.	.	.	.	.	.	.	.	.
North Ostrobothnia	11,038	17.9	6,649	-1.1	25,900	7.7	10,033	-1.3	4,858	5.4	15,298	14.9
Kuusamo	4,081	-4.7	1,195	-22.0	16,995	13.3	2,624	47.5	2,922	0.0	714	7.5
Oulu	.	.	.	.	.	.	.	.	.	.	.	.
Kainuu	8,463	6.3	969	4.1	2,543	15.9	2,069	-8.7	1,635	5.1	1,106	-3.6
Kajaani	.	.	.	.	.	.	.	.	.	.	.	.
Lapland	159,343	12.9	30,547	29.7	95,673	15.2	13,661	2.9	37,822	-10.9	67,453	-1.8
Rovaniemi	33,153	6.8	13,894	27.3	7,416	-1.3	2,647	12.9	15,514	-17.4	12,409	-3.1
Åland	1,284	-9.9	1,190	-7.7	1,595	-17.5	7,012	-6.9	141	-38.7	3,811	-4.0
Maarianhamina	705	-1.4	748	-24.1	648	0.2	1,919	0.3	125	-39.6	2,877	3.9

**Appendix table 8.1. Nights spent by non-residents and annual change (%) in hotels in 2018**

Region / municipality	Foreign countries		Russia		United Kingdom		Germany		Sweden		China	
Whole country	5,711,727	1.0	611,618	-2.2	513,620	-1.3	504,460	-0.9	444,084	-6.3	317,300	5.3
Mainland Finland	5,603,675	1.2	610,161	-2.3	512,935	-1.3	500,947	-1.1	355,087	-6.2	317,180	5.3
Uusimaa	2,818,232	0.8	240,649	1.3	194,574	-4.6	224,831	4.0	194,466	-7.7	199,506	-4.3
Espoo	155,645	-6.5	16,896	9.3	8,887	-16.2	11,620	-28.1	11,609	-6.4	15,565	5.1
Helsinki	2,162,559	1.0	190,401	4.2	154,700	-5.8	172,753	9.0	145,359	-9.2	109,829	-5.1
Vantaa	377,512	3.8	20,035	-14.7	25,850	7.5	22,056	1.0	26,287	-7.0	62,516	-0.9
Southwest Finland	183,925	-7.4	11,702	8.7	8,274	-25.9	22,857	-8.3	30,126	-6.6	4,313	32.5
Turku	144,698	-2.2	9,696	17.8	7,020	-16.9	18,946	-6.7	22,958	-5.4	3,476	26.5
Satakunta	49,735	-24.1	1,850	50.8	3,216	-22.7	10,483	-42.6	7,078	-29.2	569	49.0
Pori	23,220	-24.8	1,126	69.3	1,848	-26.5	4,017	-53.4	2,974	-27.8	420	255.9
Kanta-Häme	32,605	-16.4	3,087	-7.4	1,444	-45.4	3,059	-34.3	3,646	5.7	1,282	11.4
Hämeenlinna	18,165	-19.8	1,550	-18.6	1,092	-48.4	1,658	-38.6	2,077	-3.2	532	60.7
Pirkanmaa	221,340	11.5	13,270	-4.2	10,580	0.8	17,421	-5.9	22,021	12.2	6,958	7.4
Tampere	204,426	13.3	9,245	12.2	10,094	2.3	15,968	-6.3	20,460	11.4	6,426	13.9
Päijät-Häme	79,883	-16.7	16,520	11.9	3,785	-13.9	7,321	-14.7	6,441	-16.7	2,874	-40.9
Lahti	58,050	-7.5	12,962	42.0	2,764	-5.9	5,856	-4.6	4,954	-12.1	1,659	25.2
Kymenlaakso	43,219	1.4	12,855	-9.2	3,404	22.5	3,825	1.1	2,690	3.5	495	43.9
Kouvola	13,252	-17.1	4,321	-1.2	453	25.1	1,476	-27.0	1,024	-23.8	174	3.0
South Karelia	174,388	-4.6	133,196	-9.9	1,229	-24.2	3,970	-8.3	4,500	28.8	1,554	13.4
Lappeenranta	85,514	-2.5	53,677	-18.0	857	-27.5	3,080	10.3	2,806	36.4	1,361	61.8
South Savo	60,044	-14.6	28,284	-17.2	1,425	-3.4	4,522	44.4	2,476	3.3	2,270	19.2
Mikkeli	23,135	-15.2	8,585	-30.6	620	-5.5	1,509	61.0	978	-12.5	991	43.8
North Savo	73,119	12.4	22,353	14.8	2,791	11.0	13,352	25.0	3,589	-20.9	2,506	134.9
Kuopio	43,473	11.9	12,773	6.7	2,019	29.1	7,035	30.8	2,440	-21.1	656	37.2
North Karelia	46,648	8.4	13,469	15.5	1,597	13.1	5,724	13.1	2,408	-10.7	555	25.9
Joensuu	27,663	-4.9	6,180	-9.2	1,307	18.9	3,266	-5.5	2,076	-1.6	451	22.2
Central Finland	129,837	-4.4	17,074	-1.3	5,744	-18.1	15,163	-25.3	7,331	-17.6	3,017	98.9
Jyväskylä	70,264	-9.0	4,087	10.2	4,911	-10.8	8,945	-29.6	5,186	-10.0	2,107	52.3
South Ostrobothnia	24,732	-6.3	1,250	-18.5	613	-0.6	1,670	-19.8	3,267	21.4	693	65.0
Seinäjoki	12,099	-6.3	318	-5.4	340	6.6	831	-27.4	1,433	5.0	175	-35.9
Ostrobothnia	77,216	0.2	1,127	-27.8	3,924	5.9	5,233	9.4	22,942	-1.6	792	8.3
Vaasa	61,586	5.3	946	-28.7	3,551	25.6	4,574	37.3	18,646	-2.0	761	10.9
Central Ostrobothnia	9,768	5.0	370	9.1	417	-17.9	970	-17.1	1,787	-15.0	146	-37.3
Kokkola	8,679	3.9	239	1.3	394	-20.2	950	-17.6	1,689	-13.7	146	-30.5
North Ostrobothnia	216,261	3.1	29,031	-7.3	31,705	24.6	22,076	-6.0	14,361	-7.0	8,230	73.8
Kuusamo	88,066	14.5	22,285	-2.3	22,747	44.8	3,573	-13.8	1,420	-1.5	2,939	151.2
Oulu	86,871	-1.6	5,432	-12.3	4,092	-10.1	9,856	-8.8	11,108	-5.6	4,069	27.4
Kainuu	76,525	30.5	23,154	5.4	2,357	46.9	4,185	42.5	1,801	30.2	18,069	290.1
Kajaani	8,676	2.4	1,524	-6.4	357	22.7	944	11.1	775	13.8	179	59.8
Lapland	1,286,198	5.0	40,920	-1.3	235,856	0.8	134,285	0.3	24,157	-3.3	63,351	6.9
Rovaniemi	419,402	5.8	19,171	0.6	38,628	8.7	24,062	-12.4	7,161	6.9	37,285	17.0
Åland	108,052	-5.2	1,457	6.1	685	-20.7	3,513	35.7	88,997	-6.7	120	-36.5
Maarianhamina	73,247	-3.1	1,244	-2.9	604	-14.9	2,477	43.7	59,004	-4.2	116	-7.2



**Appendix table 8.2. Nights spent by non-residents and annual change (%) in hotels in 2018**

Region / municipality	United States		France		Japan		Netherlands		Estonia		Norway	
Whole country	276,455	6.5	258,347	7.6	208,005	-10.3	181,940	6.6	152,729	6.8	151,153	-5.8
Mainland Finland	275,612	6.6	257,960	7.7	207,895	-10.2	181,422	6.5	149,755	7.2	148,724	-5.9
Uusimaa	203,959	6.9	69,526	-0.9	149,535	-11.4	66,061	-0.2	68,788	9.6	75,155	-2.3
Espoo	5,589	-2.2	3,156	-4.9	2,493	-1.3	3,576	-3.8	12,001	21.0	3,218	-17.3
Helsinki	171,968	7.3	54,472	-2.6	133,999	-11.3	51,627	3.5	41,095	11.5	59,849	-2.6
Vantaa	23,558	5.4	9,243	10.2	11,351	-19.3	7,539	-0.2	9,739	-8.2	9,096	3.6
Southwest Finland	8,206	5.0	4,573	1.6	4,279	-8.5	5,060	-8.7	8,908	2.5	6,334	20.7
Turku	7,399	10.5	3,819	-1.5	1,724	-4.1	4,491	-9.1	5,691	-3.4	5,036	28.1
Satakunta	1,591	-10.7	3,111	-4.0	553	-10.5	1,615	-32.5	2,599	6.3	768	-30.7
Pori	784	-14.9	696	16.0	274	-10.7	734	-40.7	1,452	66.1	401	-37.1
Kanta-Häme	547	-40.7	516	-48.6	451	-39.5	475	-64.6	2,343	1.5	719	-54.0
Hämeenlinna	439	-37.9	329	-8.6	261	-59.7	301	-71.9	743	-35.2	399	-63.7
Pirkanmaa	10,919	2.4	7,481	24.4	4,399	14.9	6,514	8.8	10,083	2.1	4,705	-7.7
Tampere	10,719	3.0	7,204	25.6	4,326	14.7	6,240	9.4	7,682	-2.6	4,555	-7.5
Päijät-Häme	1,259	-19.1	1,826	-10.4	1,835	25.1	2,444	33.8	4,302	2.4	3,473	-49.2
Lahti	1,074	7.3	1,286	-15.0	502	-16.7	1,961	31.1	3,589	17.6	1,787	-59.7
Kymenlaakso	1,164	-0.9	707	-44.4	128	0.0	1,553	72.4	3,921	-3.2	456	-47.1
Kouvola	304	-47.1	299	-31.4	23	-62.3	187	12.7	1,414	-21.7	130	-79.2
South Karelia	1,094	-26.7	588	-26.0	361	-14.5	954	-24.3	3,506	20.5	479	-44.9
Lappeenranta	611	-21.8	415	-19.9	161	-28.1	864	-20.5	1,831	7.5	392	-49.6
South Savo	895	-3.0	905	-39.7	452	6.1	552	-27.5	1,965	0.0	322	-35.7
Mikkeli	266	-24.4	303	-54.8	203	8.6	288	-39.0	1,058	-22.8	146	-43.8
North Savo	1,723	-9.4	980	5.5	719	-5.0	1,356	-7.8	2,546	9.6	865	-8.6
Kuopio	1,325	-13.2	674	20.8	259	-35.4	952	-10.7	1,668	11.8	663	6.1
North Karelia	947	-25.6	1,128	-16.1	417	-34.6	1,337	22.7	1,393	-16.2	1,000	10.1
Joensuu	817	-18.0	964	-16.1	310	-30.0	691	11.6	621	9.7	956	25.1
Central Finland	4,413	-16.2	7,251	0.5	1,167	-21.1	11,192	39.5	17,597	7.1	1,610	2.4
Jyväskylä	3,890	-19.2	2,999	-1.6	1,054	-20.8	1,644	-11.4	2,126	-19.8	1,369	0.5
South Ostrobothnia	672	-27.0	881	43.3	735	70.5	869	72.8	2,500	37.7	788	-10.0
Seinäjoki	415	-17.3	382	35.5	368	10.5	560	94.4	849	19.2	329	-24.2
Ostrobothnia	2,366	-2.9	2,335	19.3	695	-22.3	2,184	-18.5	2,518	-1.9	3,549	6.0
Vaasa	1,957	-9.2	2,146	24.6	637	-21.0	1,793	4.5	1,731	-4.4	3,099	9.0
Central Ostrobothnia	718	67.4	190	27.5	147	59.8	292	-2.0	1,128	77.1	309	-42.7
Kokkola	701	91.0	167	23.7	140	52.2	259	-9.4	745	89.1	288	-45.8
North Ostrobothnia	5,642	-6.6	8,714	31.9	3,833	9.2	12,584	2.3	6,839	-6.8	6,032	-4.3
Kuusamo	599	-47.8	2,678	21.9	1,914	3.1	6,186	22.1	1,117	55.6	487	88.0
Oulu	4,520	5.3	3,599	7.1	1,662	12.3	2,671	-2.4	4,027	24.0	5,177	-8.1
Kainuu	746	-14.7	6,010	-0.9	1,566	4.5	978	-9.9	972	-20.7	930	-4.0
Kajaani	189	-59.9	154	-17.6	175	-22.2	136	-44.9	610	-3.9	171	19.6
Lapland	28,751	29.3	141,238	13.8	36,623	-11.3	65,402	15.4	7,847	20.9	41,230	-5.3
Rovaniemi	13,476	25.5	31,722	6.1	15,335	-17.9	5,755	-2.4	2,448	9.7	9,096	-5.4
Åland	843	-13.4	387	-13.4	110	-48.6	518	32.8	2,974	-9.8	2,429	-0.8
Maarianhamina	686	-23.3	312	-1.9	100	-47.9	410	25.0	1,752	0.5	2,261	3.3

**Appendix table 9.1. Capacity of accommodation establishments and capacity utilization by type of establishment in 2018**

Whole year on average	Number of establishments	Number of rooms	Number of bed-places	Occupancy rate of bedrooms, %	Change of room occupancy rate, %-units	Room price, euros (incl. VAT 10 %)
All accommodation establishments	1,173	64,133	159,381	51.7	-0.3	100.88
Hotels	628	53,161	117,075	55.4	-0.9	104.09
Similar establishments	96	1,890	4,746	23.0	-4.4	63.58
Holiday villages	314	7,252	29,947	36.9	4.4	67.16
Camping sites	136	1,829	7,613	32.6	4.5	.
Hostels	42	1,346	3,304	56.4	3.4	46.86

**Appendix table 9.2. Capacity of accommodation establishments and capacity utilization by type of establishment, May-August 2018**

May-August on average	Number of establishments	Number of rooms	Number of bed-places	Occupancy rate of bedrooms, %	Change of room occupancy rate, %-units	Room price, euros (incl. VAT 10 %)
All accommodation establishments	1,298	67,394	168,633	53.6	-2.3	99.16
Hotels	636	53,795	118,027	58.0	-3.2	102.80
Similar establishments	108	2,270	5,650	30.0	-1.8	62.52
Holiday villages	351	8,110	32,708	36.7	3.9	61.63
Camping sites	204	3,220	12,248	36.2	5.5	.
Hostels	46	1,449	3,545	57.4	-5.3	51.65

**Appendix table 10.1. Capacity of accommodation establishments by type of establishment in 2018**

	Establishments	Rooms	Bed-places	Caravan places
All accommodation establishments	1,372	69,671	172,668	19,886
Hotels	675	57,064	124,988	2,179
Residential hotel	35	1,493	3,885	47
Conference hotel	89	16,838	32,090	10
Spa	54	7,698	18,372	350
Holiday resort	159	7,663	17,740	989
Urban hotel	222	15,383	30,211	226
Other hotel	116	7,989	22,690	557
Similar establishments	113	2,264	5,659	450
Holiday villages	316	6,213	28,270	1,770
Camping sites	219	2,573	10,023	15,299
Hostels	49	1,557	3,728	188

**Appendix table 10.2. Capacity of accommodation establishments by opening season in 2018**

		Establishments	Rooms	Bed-places	Caravan places
All accommodation establishments	Total	1,372	69,671	172,668	19,886
	Open year-round	1,103	64,035	155,889	12,947
	Open part of the year	269	5,636	16,779	6,939
Hotels	Total	675	57,064	124,988	2,179
	Open year-round	635	54,954	120,440	2,010
	Open part of the year	40	2,110	4,548	169
Similar establishments	Total	113	2,264	5,659	450
	Open year-round	91	1,789	4,429	375
	Open part of the year	22	475	1,230	75
Holiday villages	Total	316	6,213	28,270	1,770
	Open year-round	246	5,198	24,306	1,304
	Open part of the year	70	1,015	3,964	466
Camping sites	Total	219	2,573	10,023	15,299
	Open year-round	91	778	3,549	9,085
	Open part of the year	128	1,795	6,474	6,214
Hostels	Total	49	1,557	3,728	188
	Open year-round	40	1,316	3,165	173
	Open part of the year	9	241	563	15

**Appendix table 10.3. Capacity of accommodation establishments by number of bed-places in 2018**

		Establishments	Rooms	Bed-places	Caravan places
All accommodation establishments	Total	1,372	69,671	172,668	19,886
	0 - 49	553	6,033	16,547	11,021
	50 - 99	353	8,905	24,083	4,504
	100 - 249	273	18,347	43,223	2,826
	250 -	193	36,386	88,815	1,535
Hotels	Total	675	57,064	124,988	2,179
	0 - 49	152	2,557	5,241	334
	50 - 99	153	5,156	10,869	725
	100 - 249	201	15,585	32,784	700
	250 -	169	33,766	76,094	420
Similar establishments	Total	113	2,264	5,659	450
	0 - 49	68	932	2,177	154
	50 - 99	36	897	2,254	258
	100 -	9	435	1,228	38
Holiday villages	Total	316	6,213	28,270	1,770
	0 - 49	170	1,425	5,282	757
	50 - 99	85	1,375	5,625	329
	100 -	61	3,413	17,363	684
Camping sites	Total	219	2,573	10,023	15,299
	0 - 49	139	875	3,097	9,732
	50 - 99	64	1,082	4,362	3,053
	100 -	16	616	2,564	2,514
Hostels	Total	49	1,557	3,728	188
	0 - 49	24	244	750	44
	50 - 99	15	395	973	139
	100 -	10	918	2,005	5

**Appendix table 10.4. Capacity of accommodation establishments by number of rooms in 2018**

		Establishments	Rooms	Bed-places	Caravan places
All accommodation establishments	Total	1,372	69,671	172,668	19,886
	0 - 19	629	6,451	23,506	13,636
	20 - 49	356	10,797	29,008	3,993
	50 - 99	169	12,187	28,586	1,727
	100 -	218	40,236	91,568	530
Hotels	Total	675	57,064	124,988	2,179
	0 - 19	108	1,483	3,643	266
	20 - 49	216	6,810	15,415	1,016
	50 - 99	149	10,823	23,649	505
	100 -	202	37,948	82,281	392
Similar establishments	Total	113	2,264	5,659	450
	0 - 19	69	859	2,438	140
	20 - 49	40	1,160	2,725	294
	50 -	4	245	496	16
Holiday villages	Total	316	6,213	28,270	1,770
	0 - 19	237	2,217	10,034	906
	20 - 49	58	1,683	7,051	607
	50 -	21	2,313	11,185	257
Camping sites	Total	219	2,573	10,023	15,299
	0 - 19	189	1,623	6,525	12,276
	20 - 49	27	698	2,550	1,936
	50 -	3	252	948	1,087
Hostels	Total	49	1,557	3,728	188
	0 - 19	26	269	866	48
	20 - 49	15	446	1,267	140
	50 -	8	842	1,595	0

### Inquiries

Marjut Tuominen 029 551 3556

Ossi Nurmi 029 551 2984

Director in charge:

Mari Ylä-Jarkko

[liikenne.matkailu@stat.fi](mailto:liikenne.matkailu@stat.fi)

[www.stat.fi](http://www.stat.fi)

Source: Accommodation Statistics. Statistics Finland