

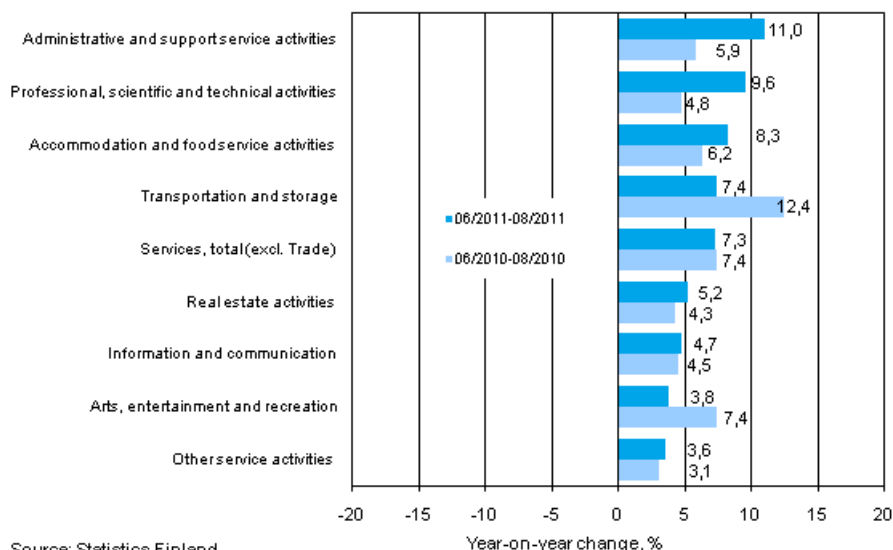
Turnover in service industries

2011, August

Turnover in service industries grew by 7.3 per cent in June to August

Turnover in service industries grew by 7.3 per cent in June to August from the corresponding time period of the year before. One year previously turnover in service industries grew by 7.4 per cent. Services are here examined exclusive of trade and the data have been adjusted for working days by eliminating the effects of calendar variations from them.

Three months' year-on-year change in turnover in services (TOL 2008)



Among the service industries, turnover grew fastest in administrative and support service activities enterprises, whose turnover increased by 11 per cent from one year ago. Over nine per cent growth was also seen in the turnover of professional, scientific and technical activities. The growth was slowest in other service activities and in arts, entertainment and recreation.

Contents

Tables

Appendix tables

Appendix table 1. Year-on-year change in turnover by industry, % (TOL 2008).....3

Figures

Appendix figures

Appendix figure 1. Turnover of service industries, trend series (TOL 2008).....4

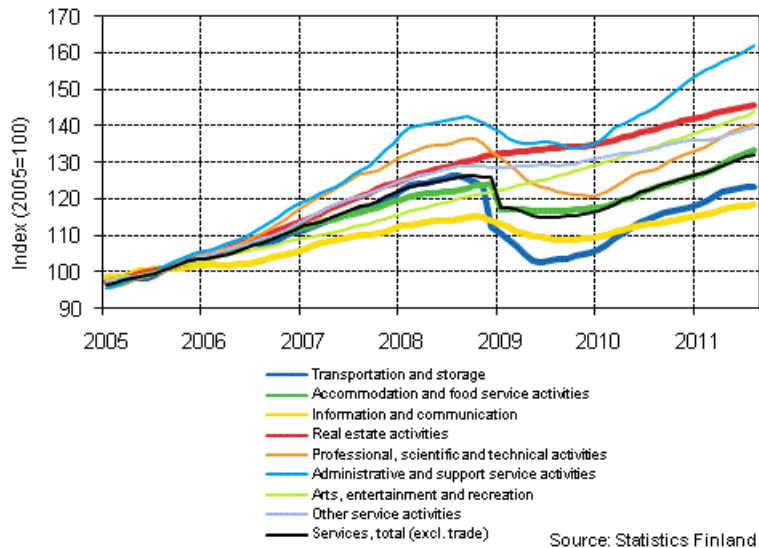
Appendix tables

Appendix table 1. Year-on-year change in turnover by industry, % (TOL 2008)

	Year-on-year change by three-month period, %				Cumulative year-on-year change, %	Year-on-year change in the latest month, %
	09-11/2010	12/10-02/11	03-05/2011	06-08/2011		
HIJLMNRS Other service activities total	8,2	9,0	8,1	7,3	7,9	8,2
H Transportation and storage	11,9	11,4	10,5	7,4	9,6	5,9
I Accommodation and food service activities	7,3	7,1	8,2	8,3	8,6	7,2
J Information and communication	4,3	5,2	4,9	4,7	4,9	5,8
L=68 Real estate activities	4,2	7,9	4,4	5,2	5,1	8,1
M Professional, scientific and technical activities	8,1	11,4	10,4	9,6	10,3	15,1
N Administrative and support services activities	11,1	14,7	11,7	11,0	12,3	11,3
R Arts, entertainment and recreation	7,5	7,9	7,5	3,8	5,8	10,2
S Other service activities	6,0	3,2	3,5	3,6	3,7	7,5

Appendix figures

Appendix figure 1. Turnover of service industries, trend series (TOL 2008)



Inquiries

Anna Muurainen (09) 1734 2670

Director in charge:

Hannele Orjala

palvelut.suhdanne@stat.fi

www.stat.fi

Source: Turnover of service industries, Statistics Finland