

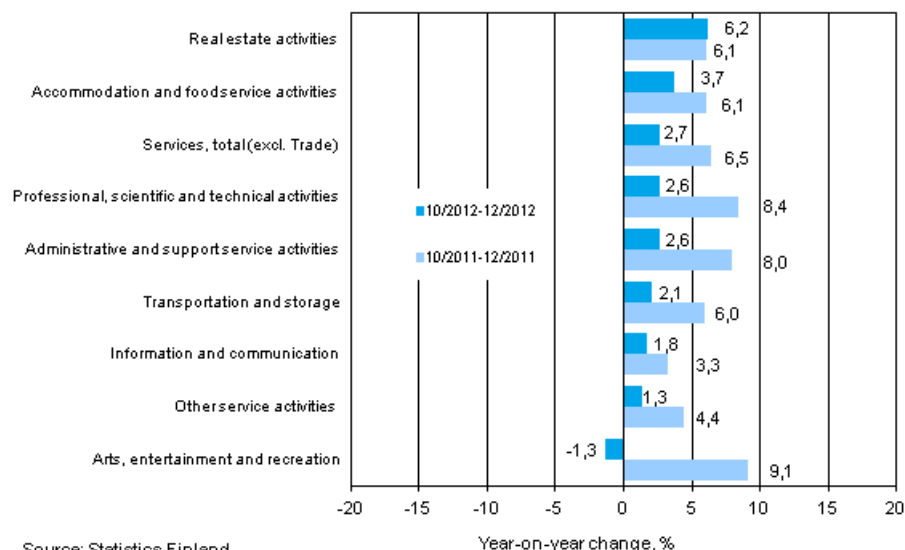
Turnover in service industries

2012, December

Turnover in service industries grew by 2.7 per cent year-on-year in October to December

Turnover in service industries grew by 2.7 per cent in the fourth quarter of 2012 from last year. One year previously, turnover in service industries grew by 6.5 per cent. Services are here examined exclusive of trade, and the data have been adjusted for working days by eliminating the effects of calendar variations from them.

Three months' year-on-year change in turnover in services (TOL 2008)



In the last quarter of the year, turnover developed more slowly than in the previous year in all main service industries, apart from real estate activities where it went up by 6.2 per cent. The second most growth was attained in hotels and restaurants, where the turnover of enterprises rose by 3.7 per cent from the corresponding period of the year before. Turnover developed weakest in arts, entertainment and recreation, where it dropped by 1.3 per cent from one year ago.

The indices of turnover will adopt base year 2010=100 from the January 2013 data. Data using the new base year will be published for the first time on 15 April 2013.

Contents

Tables

Appendix tables

Appendix table 1. Year-on-year change in turnover by industry, % (TOL 2008).....4

Figures

Appendix figures

Appendix figure 1. Turnover of service industries, trend series (TOL 2008).....5

Revisions in these statistics.....6

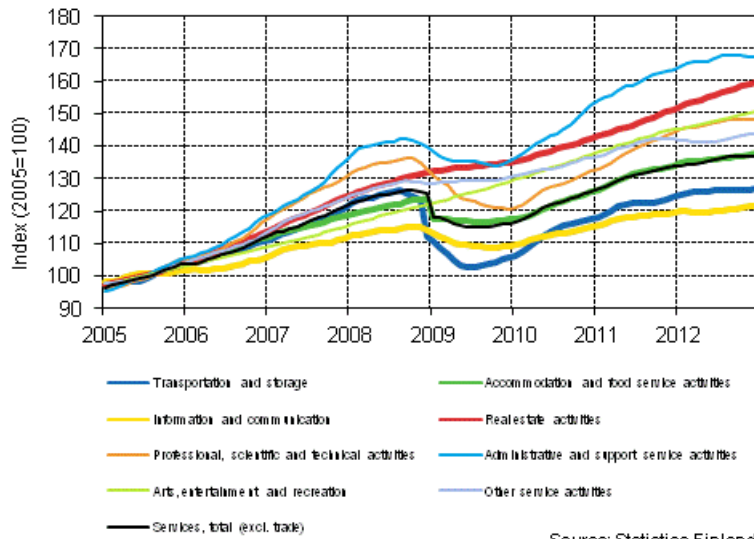
Appendix tables

Appendix table 1. Year-on-year change in turnover by industry, % (TOL 2008)

	Year-on-year change by three-month period, %				Cumulative year-on-year change, %	Year-on-year change in the latest month, %
	01-03/2012	04-06/2012	07-09/2012	10-12/2012		
HIJLMNRS Other service activities total	5,1	3,5	3,5	2,7	3,7	1,3
H Transportation and storage	5,2	2,9	3,6	2,1	3,4	0,9
I Accommodation and food service activities	7,2	3,3	2,4	3,7	4,0	2,5
J Information and communication	4,2	0,8	1,1	1,8	1,9	-1,1
L=68 Real estate activities	7,0	5,7	6,4	6,2	6,3	1,3
M Professional, scientific and technical activities	9,7	5,9	5,4	2,6	5,7	1,8
N Administrative and support services activities	7,0	4,3	5,3	2,6	4,8	1,6
R Arts, entertainment and recreation	4,2	1,8	4,0	-1,3	2,1	-2,5
S Other service activities	3,6	-0,4	-1,1	1,3	0,8	-3,9

Appendix figures

Appendix figure 1. Turnover of service industries, trend series (TOL 2008)



Source: Statistics Finland

Revisions in these statistics

The data of the statistics have become revised according to the table below. For more information about data revisions, see Section 3 of the quality description (only in Finnish).

Revision of annual changes in turnover in main industries¹⁾

Industry / Reference period		Year-on-year change,%		Revision, percentage point
		1st release	Latest release (2013-03-14)	
HIJLMNRS Other service activities total	07/2012	4,4	3,6	-0,8
	08/2012	5,5	4,5	-1,0
	09/2012	3,4	2,6	-0,8
	10/2012	3,7	3,2	-0,5
	11/2012	3,7	3,7	0,0
H Transportation and storage	07/2012	3,5	2,9	-0,6
	08/2012	5,2	4,5	-0,7
	09/2012	3,8	3,3	-0,5
	10/2012	3,6	3,3	-0,3
	11/2012	2,3	2,2	-0,1
I Accommodation and food service activities	07/2012	1,7	0,8	-0,9
	08/2012	5,5	4,7	-0,8
	09/2012	2,4	1,7	-0,7
	10/2012	3,0	2,8	-0,2
	11/2012	5,8	5,8	0,0
J Information and communication	07/2012	2,8	2,3	-0,5
	08/2012	2,9	2,1	-0,8
	09/2012	0,3	-0,8	-1,1
	10/2012	2,8	2,2	-0,6
	11/2012	5,2	4,7	-0,5
L=68 Real estate activities	07/2012	8,7	6,7	-2,0
	08/2012	6,9	6,1	-0,8
	09/2012	8,0	6,4	-1,6
	10/2012	11,5	10,0	-1,5
	11/2012	9,3	9,5	0,2
M Professional, scientific and technical activities	07/2012	7,3	5,5	-1,8
	08/2012	8,8	6,3	-2,5
	09/2012	5,9	4,7	-1,2
	10/2012	4,3	3,6	-0,7
	11/2012	2,0	2,8	0,8
N Administrative and support services activities	07/2012	8,7	7,9	-0,8
	08/2012	5,0	4,4	-0,6
	09/2012	4,1	3,7	-0,4
	10/2012	3,2	3,1	-0,1
	11/2012	3,4	3,2	-0,2
R Arts, entertainment and recreation	07/2012	7,7	7,6	-0,1
	08/2012	9,9	10,0	0,1
	09/2012	-4,8	-5,3	-0,5
	10/2012	-1,0	-1,3	-0,3
	11/2012	0,4	0,0	-0,4
S Other service activities	07/2012	3,9	3,4	-0,5
	08/2012	1,2	-0,2	-1,4
	09/2012	-4,3	-5,9	-1,6
	10/2012	5,9	5,6	-0,3
	11/2012	3,1	3,0	-0,1

1) The 1st release refers to the time when data for the reference period were released for the first time. The revision describes the difference of annual change percentages between the first and latest release.

Revision of long-term annual changes in turnover in main industries

Industry	Year	Average ¹⁾	Average for absolute values ²⁾
HIJLMNRS Other service activities total	2009	-1,1	1,1
	2010	-1,1	1,1
	2011	-0,8	0,8
H Transportation and storage	2009	-0,5	0,7
	2010	-0,5	0,5
	2011	-0,4	0,5
I Accommodation and food service activities	2009	-0,3	0,6
	2010	-0,9	0,9
	2011	-0,6	0,6
J Information and communication	2009	-1,2	1,4
	2010	-0,6	0,7
	2011	-0,1	0,5
L=68 Real estate activities	2009	-1,9	2,3
	2010	-1,9	2,1
	2011	-1,0	1,2
M Professional, scientific and technical activities	2009	-2,1	2,1
	2010	-2,6	2,8
	2011	-2,8	2,8
N Administrative and support services activities	2009	-1,2	1,2
	2010	-0,7	0,8
	2011	-0,8	1,0
R Arts, entertainment and recreation	2009	0,0	0,6
	2010	-0,2	0,8
	2011	-0,2	0,7
S Other service activities	2009	-0,8	1,1
	2010	-2,1	2,3
	2011	-1,6	1,9

1) Average for data revised between the first and seventh release in the statistical reference year.

2) Average for absolute values of differences between the first and seventh release.

Inquiries

Anna Muurainen 09 1734 2670

Director in charge:

Hannele Orjala

palvelut.suhdanne@stat.fi

www.stat.fi

Source: Turnover of service industries, Statistics Finland