

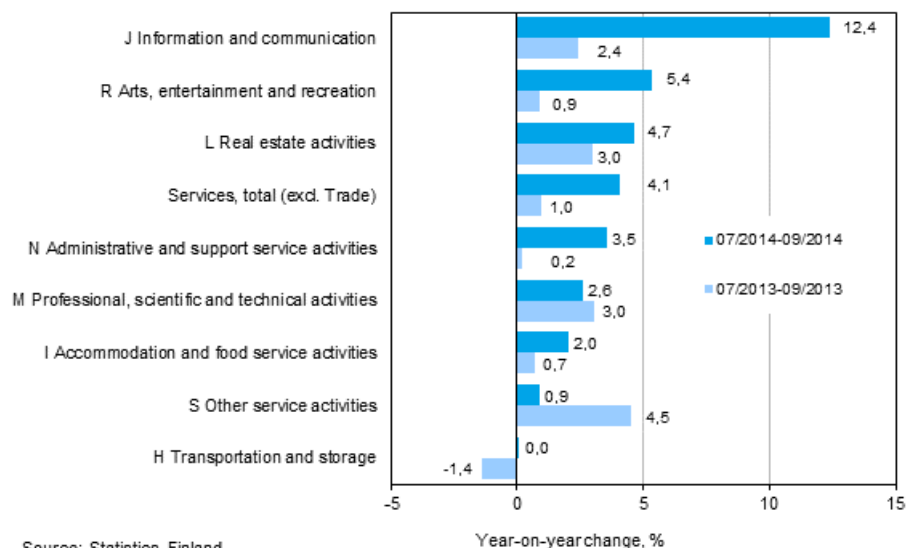
Turnover in service industries

2014, September

Turnover in service industries grew by 4.1 per cent in the third quarter of 2014 from the year before

According to Statistics Finland, turnover in service industries grew by 4.1 per cent in July to September from the corresponding time period of the year before. In the same period one year earlier, turnover rose by 1.0 per cent year-on-year. Services are here examined exclusive of trade.

Three months' year-on-year change in turnover in services (TOL 2008)



In July to September, turnover developed more favourably than in the corresponding period of the previous year in nearly all main service industries. Only in professional, scientific and technical activities and in other service activities turnover developed more weakly than in the corresponding period last year.

In the third quarter, turnover in service industries still grew fastest in the main industry of information and communication, where growth compared to the previous year amounted to 12.4 per cent. Of the

sub-industries of information and communication activities, growth has been fastest in software, consultancy and related activities that grew by 27.5 per cent year-on-year. Of the sub-industries, information services activities have also grown strongly in July to September, by 20.9 per cent.

Among the main service industries, growth was also fast in arts, entertainment and recreation where turnover grew by 5.4 per cent from July to September 2013. Real estate activities increased by 4.7 per cent and administrative and support service activities by 3.5 per cent year-on-year. In the third quarter, the turnover of transportation and storage activities was on the same level as in the corresponding quarter last year, while one year ago the industry was still 1.4 per cent negative.

Contents

Tables

Appendix tables

Appendix table 1. Year-on-year change in turnover by industry, % (TOL 2008).....4

Figures

Appendix figures

Appendix figure 1. Turnover of service industries, trend series (TOL 2008).....5

Revisions in these statistics.....6

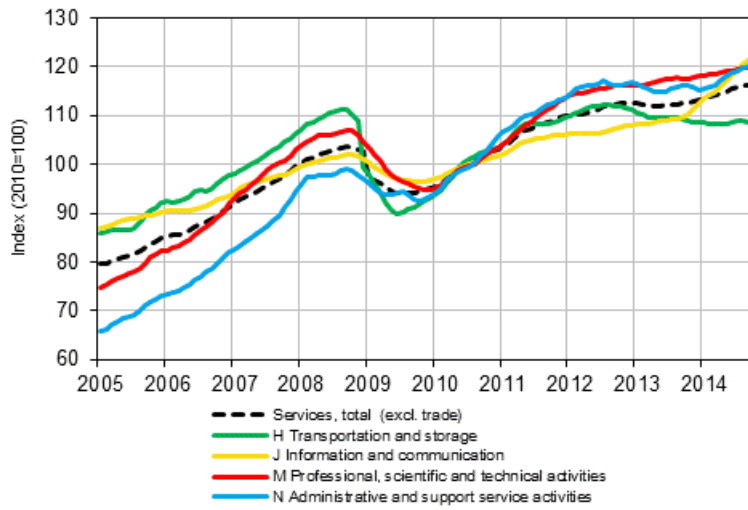
Appendix tables

Appendix table 1. Year-on-year change in turnover by industry, % (TOL 2008)

	Year-on-year change by three-month period, %				Cumulative year-on-year change, %	Year-on-year change in the latest month, %
	10-12/2013	01-03/2014	04-06/2014	07-09/2014		
HIJLMNRS Other service activities total	0,1	2,0	1,8	4,1	2,6	6,0
H Transportation and storage	-2,3	-1,0	-1,8	0,0	-0,9	2,8
I Accommodation and food service activities	0,8	0,1	-0,5	2,0	0,6	1,1
J Information and communication	3,0	5,6	7,0	12,4	8,2	15,1
L=68 Real estate activities	-2,0	5,6	4,8	4,7	5,0	3,7
M Professional, scientific and technical activities	0,8	2,7	0,2	2,6	1,8	6,5
N Administrative and support services activities	-0,6	0,3	2,5	3,5	2,1	4,9
R Arts, entertainment and recreation	5,6	2,3	3,5	5,4	3,7	1,5
S Other service activities	-0,1	1,7	-0,6	0,9	0,6	4,7

Appendix figures

Appendix figure 1. Turnover of service industries, trend series (TOL 2008)



Source: Statistics Finland

Revisions in these statistics

The data of the statistics have become revised according to the table below. For more information about data revisions, see Section 3 of the quality description (only in Finnish).

Revision of annual changes in turnover in main industries¹⁾

Industry / Reference period		Year-on-year change,%		Revision, percentage point
		1st release	Latest release (2014-12-15)	
HIJLMNRS Other service activities total	04/2014	1,2	0,9	-0,3
	05/2014	1,0	0,7	-0,3
	06/2014	4,3	3,8	-0,5
	07/2014	3,8	3,4	-0,4
	08/2014	3,1	2,7	-0,4
H Transportation and storage	04/2014	-1,1	-1,5	-0,4
	05/2014	-4,3	-4,4	-0,1
	06/2014	1,0	0,7	-0,3
	07/2014	0,4	-0,1	-0,5
	08/2014	-2,6	-2,8	-0,2
I Accommodation and food service activities	04/2014	0,7	0,4	-0,3
	05/2014	0,9	0,3	-0,6
	06/2014	-1,7	-2,1	-0,4
	07/2014	2,2	2,2	0,0
	08/2014	2,8	2,7	-0,1
J Information and communication	04/2014	4,8	5,4	0,6
	05/2014	6,7	5,9	-0,8
	06/2014	9,4	9,7	0,3
	07/2014	10,1	9,7	-0,4
	08/2014	12,4	12,1	-0,3
L=68 Real estate activities	04/2014	3,0	3,3	0,3
	05/2014	2,7	3,2	0,5
	06/2014	7,4	7,5	0,1
	07/2014	3,9	4,6	0,7
	08/2014	5,5	5,8	0,3
M Professional, scientific and technical activities	04/2014	-1,7	-3,0	-1,3
	05/2014	0,1	-0,2	-0,3
	06/2014	5,4	3,8	-1,6
	07/2014	3,2	1,3	-1,9
	08/2014	0,5	-0,8	-1,3
N Administrative and support services activities	04/2014	1,2	0,5	-0,7
	05/2014	3,5	3,1	-0,4
	06/2014	4,1	3,9	-0,2
	07/2014	3,7	3,4	-0,3
	08/2014	2,7	2,3	-0,4
R Arts, entertainment and recreation	04/2014	7,8	7,4	-0,4
	05/2014	4,6	4,2	-0,4
	06/2014	3,9	-1,1	-5,0
	07/2014	8,6	7,9	-0,7
	08/2014	7,4	6,7	-0,7

Industry / Reference period		Year-on-year change,%		Revision, percentage point
		1st release	Latest release (2014-12-15)	
S Other service activities	04/2014	-1,0	-1,1	-0,1
	05/2014	-2,8	-3,0	-0,2
	06/2014	2,4	2,3	-0,1
	07/2014	-0,6	-0,4	0,2
	08/2014	-2,3	-2,0	0,3

1) The 1st release refers to the time when data for the reference period were released for the first time. The revision describes the difference of annual change percentages between the first and latest release.

Revision of long-term annual changes in turnover in main industries

Industry	Year	Average ¹⁾	Average for absolute values ²⁾
HIJLMNRS Other service activities total	2011	-0,8	0,8
	2012	-0,8	0,8
	2013	-0,8	0,8
H Transportation and storage	2011	-0,4	0,5
	2012	-0,4	0,6
	2013	-0,5	0,5
I Accommodation and food service activities	2011	-0,5	0,5
	2012	-0,6	0,7
	2013	-0,8	0,8
J Information and communication	2011	-0,1	0,6
	2012	-0,7	0,7
	2013	-0,6	0,7
L=68 Real estate activities	2011	-0,9	1,1
	2012	-1,2	1,3
	2013	-1,3	1,3
M Professional, scientific and technical activities	2011	-3,0	3,0
	2012	-1,9	2,0
	2013	-1,7	1,7
N Administrative and support services activities	2011	-0,9	1,0
	2012	-0,6	0,7
	2013	-0,4	0,6
R Arts, entertainment and recreation	2011	-0,1	0,9
	2012	-0,1	0,5
	2013	-0,3	0,6
S Other service activities	2011	-1,5	1,9
	2012	-0,7	1,0
	2013	-1,3	2,3

1) Average for data revised between the first and seventh release in the statistical reference year.

2) Average for absolute values of differences between the first and seventh release.

Inquiries

Anna Muurainen 029 551 2670

Aki Niskanen 029 551 2657

Director in charge:

Hannele Orjala

palvelut.suhdanne@stat.fi

www.stat.fi

Source: Turnover of service industries, Statistics Finland