

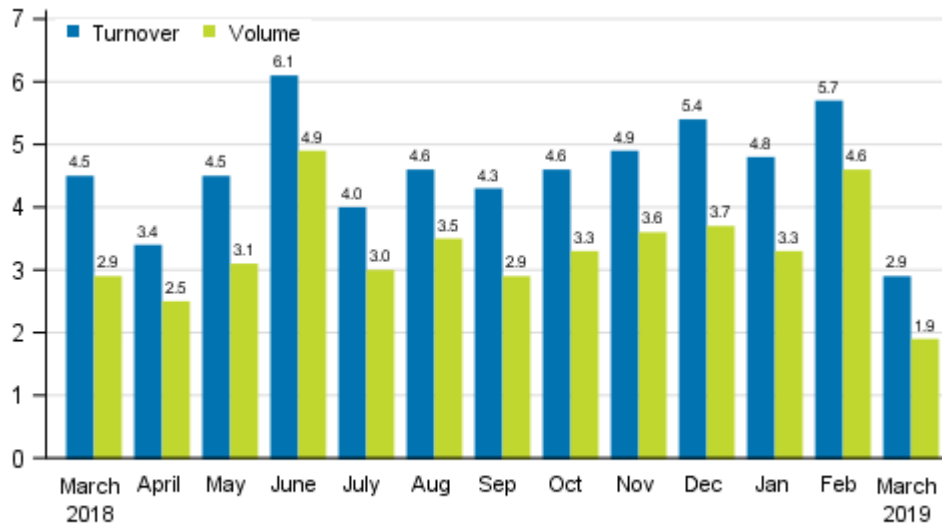
Turnover in service industries

2019, March

Turnover and output in services grew in March

Working day adjusted turnover in service industries grew by 2.9 per cent in March 2019 from March 2018. Service output i.e. volume, from which the impact of prices has been eliminated, grew by 1.9 per cent over the same period. In February 2019, turnover reached a growth of 5.7 per cent, while volume then went up by 4.6 per cent from one year back. Services are here examined exclusive of trade.

Annual change in working day adjusted turnover and volume of service industries, %



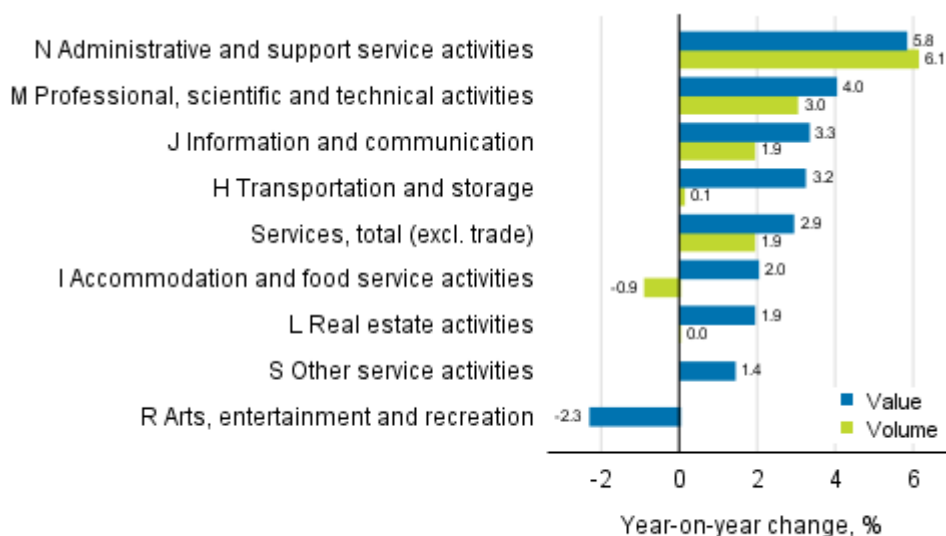
Source: Statistics Finland

In March 2019, the strongest growth among the main service industries was recorded in administrative and support service activities, where turnover adjusted for working days grew by 5.8 per cent and the volume by 6.1 per cent from March 2018. Turnover in professional, scientific and technical activities also developed favourably reaching a 4.0 per cent growth from one year ago. Correspondingly, the volume of the industry grew by 3.0 per cent.

Also, information and communication service activities, where working-day adjusted turnover grew by 3.3 per cent, and transportation and storage activities, where working-day adjusted turnover grew by 3.2 per cent, grew faster than the average growth for service industries. The respective volume growth figures were 1.9 per cent and 0.1 per cent.

Measured by volume, administrative and support service activities grew in March fastest of service industries. The development of accommodation and food service activities was weakest over the same period measured by volume.

Annual change in working day adjusted turnover and volume of service industries, March 2019, % (TOL 2008)

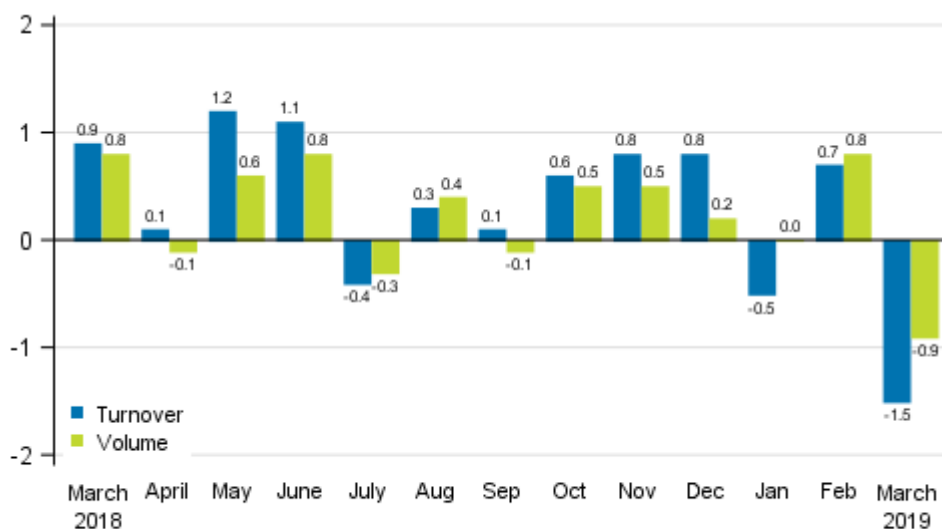


Source: Statistics Finland

Turnover fell more strongly than output compared with the previous month

Seasonally adjusted turnover in service industries declined in March 2019 by 1.5 per cent compared to February. The output of services, from which the impact of prices has been eliminated, fell by 0.9 per cent over the same period. One month earlier turnover grew by 0.7 per cent from January 2019, while the volume reached a 0.8 per cent increase.

Change in seasonally adjusted turnover and volume from the previous month of service industries , %



Source: Statistics Finland

The data for the latest month are preliminary and they may become significantly revised particularly on more detailed industry levels in coming months. The volume of service industries is calculated by eliminating the effect of price changes from the turnover index.

The factors caused by the variation in the number of weekdays are taken into account in adjustment for working days. This means taking into consideration the lengths of months, different weekdays and holidays. In addition, seasonal variation is eliminated from seasonally adjusted series, on account of which it makes sense to compare observations of two successive months as well.

Contents

Tables

Appendix tables

| | |
|---|---|
| Appendix table 1. Annual change in working day adjusted turnover and volume in sectors of services, % (TOL 2008)..... | 5 |
|---|---|

Figures

Appendix figures

| | |
|--|---|
| Appendix figure 1. Turnover and volume of service industries, trend series..... | 6 |
| Appendix figure 2. Turnover and volume of transportation and storage, trend series..... | 6 |
| Appendix figure 3. Turnover and volume of information and communication, trend series..... | 7 |
| Appendix figure 4. Turnover and volume of real estate activities, trend series..... | 7 |
| Appendix figure 5. Turnover and volume of professional, scientific and technical activities, trend series..... | 8 |
| Appendix figure 6. Turnover and volume of administrative and support service activities, trend series..... | 8 |

| | |
|------------------------------------|---|
| Revisions in these statistics..... | 9 |
|------------------------------------|---|

Appendix tables

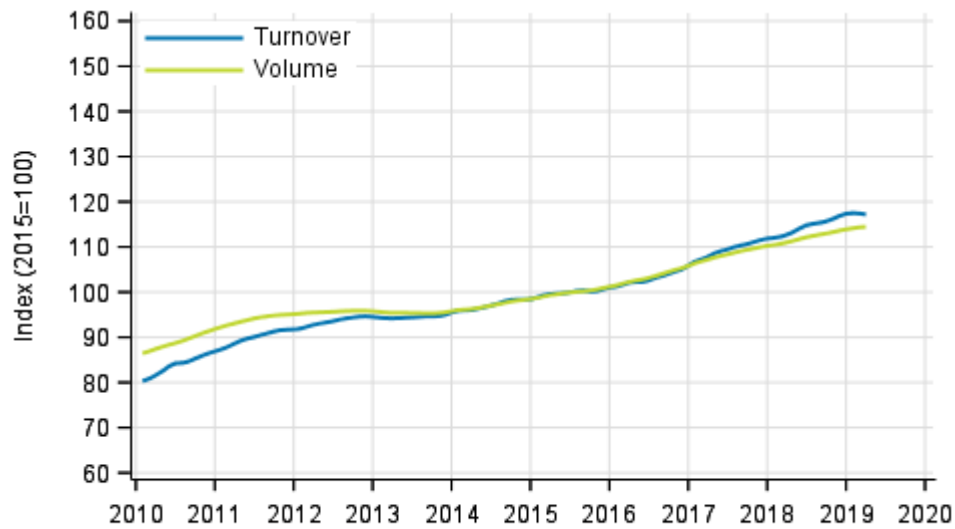
Appendix table 1. Annual change in working day adjusted turnover and volume in sectors of services, % (TOL 2008)

| | | Year-on-year change by three-month period, % ¹⁾ | | | | Year-on-year change in the latest month, % ¹⁾ |
|---|----------|--|------------|------------|------------|--|
| | | 04-06/2018 | 07-09/2018 | 10-12/2018 | 01-03/2019 | 03/2019 |
| HIJLMNRS Other service activities total | Turnover | 4.7 | 4.3 | 5.0 | 4.4 | 2.9 |
| | Volume | 3.5 | 3.1 | 3.6 | 3.2 | 1.9 |
| H Transportation and storage | Turnover | 4.8 | 3.9 | 3.6 | 3.7 | 3.2 |
| | Volume | 2.8 | 1.1 | 0.3 | 1.0 | 0.1 |
| I Accommodation and food service activities | Turnover | 5.0 | 4.1 | 4.4 | 3.4 | 2.0 |
| | Volume | 2.7 | 1.5 | 1.9 | 0.6 | -0.9 |
| J Information and communication | Turnover | 1.8 | 5.3 | 5.7 | 5.6 | 3.3 |
| | Volume | 2.1 | 5.6 | 5.7 | 4.1 | 1.9 |
| L=68 Real estate activities | Turnover | 4.6 | 3.1 | 7.5 | 4.8 | 1.9 |
| | Volume | 3.1 | 1.8 | 5.5 | 2.7 | 0.0 |
| M Professional, scientific and technical activities | Turnover | 6.6 | 5.8 | 6.3 | 6.0 | 4.0 |
| | Volume | 5.0 | 4.0 | 4.1 | 4.4 | 3.0 |
| N Administrative and support services activities | Turnover | 8.8 | 5.7 | 4.9 | 6.4 | 5.8 |
| | Volume | 7.2 | 4.6 | 4.6 | 7.1 | 6.1 |
| R Arts, entertainment and recreation | Turnover | 3.6 | -1.7 | -0.9 | -1.9 | -2.3 |
| S Other service activities | Turnover | -0.2 | 2.0 | 4.4 | 4.0 | 1.4 |

1) Year-on-year change compares the value for an examined time period to the value for the corresponding time period twelve months back.

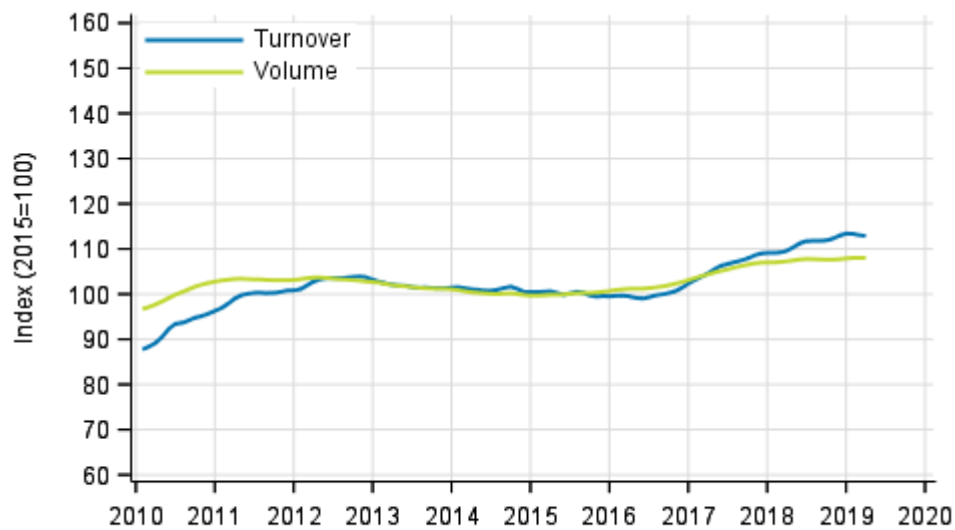
Appendix figures

Appendix figure 1. Turnover and volume of service industries, trend series



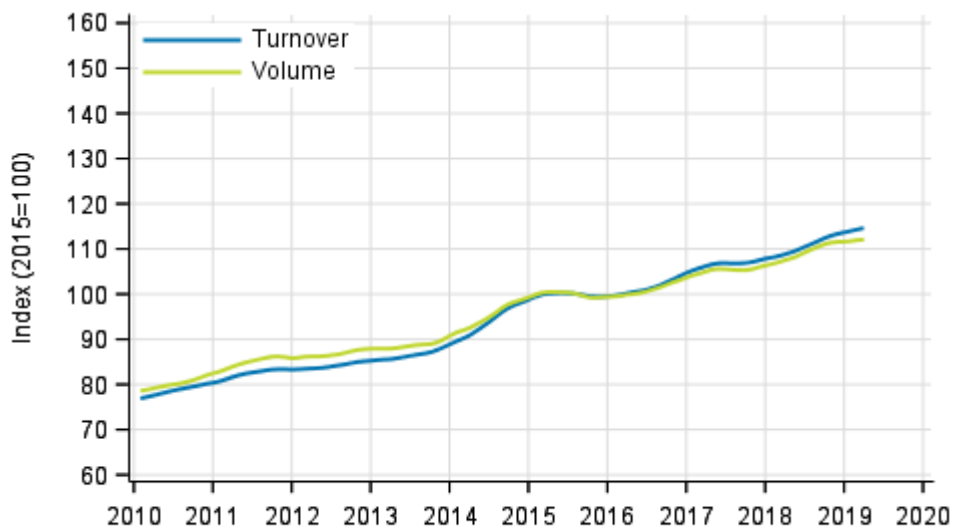
Source: Statistics Finland

Appendix figure 2. Turnover and volume of transportation and storage, trend series



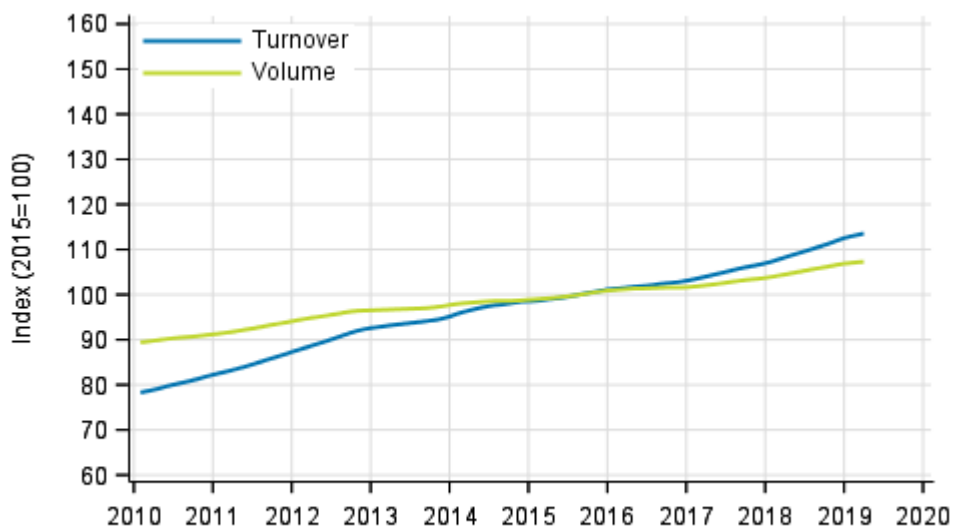
Source: Statistics Finland

Appendix figure 3. Turnover and volume of information and communication, trend series



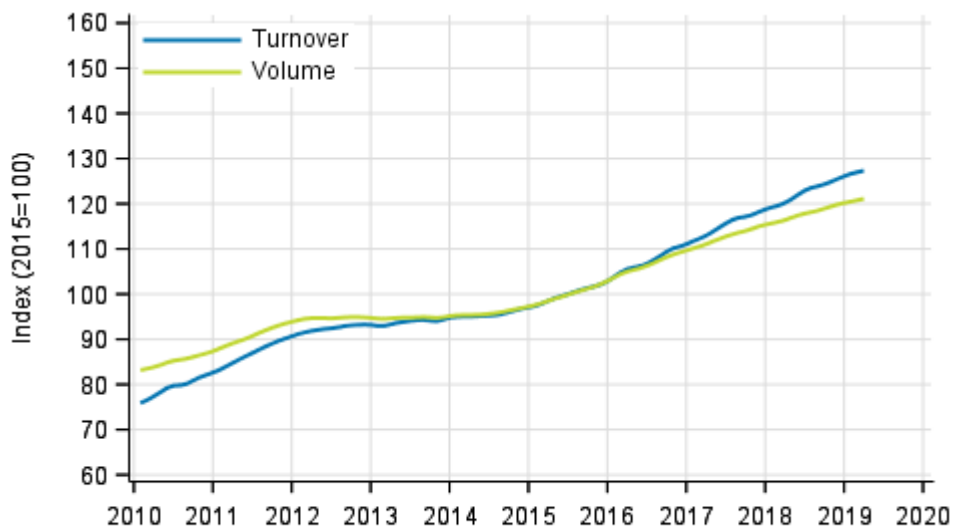
Source: Statistics Finland

Appendix figure 4. Turnover and volume of real estate activities, trend series



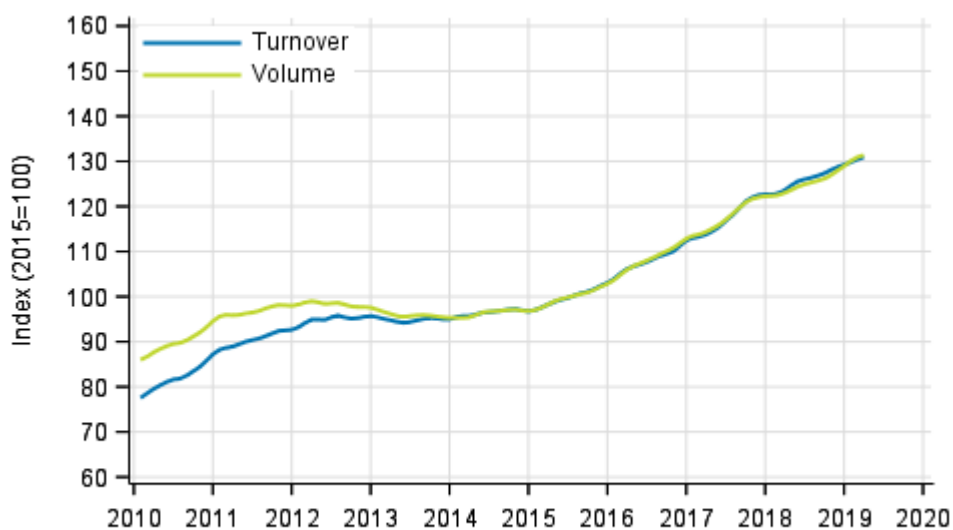
Source: Statistics Finland

Appendix figure 5. Turnover and volume of professional, scientific and technical activities, trend series



Source: Statistics Finland

Appendix figure 6. Turnover and volume of administrative and support service activities, trend series



Source: Statistics Finland

Revisions in these statistics

The data of the statistics have become revised according to the table below. For more information about data revisions, see Section 3 of the quality description (only in Finnish).

Revision to annual changes in working day adjusted turnover in sectors of services¹⁾

| Industry / Reference period | | Year-on-year change,% | | Revision, percentage point |
|---|---------|-----------------------|-----------------------------|----------------------------|
| | | 1st release | Latest release (2019-05-15) | |
| HIJLMNRS Other service activities total | 10/2018 | 4.7 | 4.6 | -0.1 |
| | 11/2018 | 4.1 | 4.9 | 0.8 |
| | 12/2018 | 4.7 | 5.4 | 0.7 |
| | 01/2019 | 4.2 | 4.8 | 0.6 |
| | 02/2019 | 4.3 | 5.7 | 1.4 |
| H Transportation and storage | 10/2018 | 2.3 | 2.9 | 0.6 |
| | 11/2018 | 3.3 | 3.2 | -0.1 |
| | 12/2018 | 6.4 | 4.8 | -1.6 |
| | 01/2019 | 4.3 | 4.5 | 0.2 |
| | 02/2019 | 3.6 | 3.7 | 0.1 |
| I Accommodation and food service activities | 10/2018 | 4.1 | 4.5 | 0.4 |
| | 11/2018 | 3.9 | 4.7 | 0.8 |
| | 12/2018 | 4.5 | 4.0 | -0.5 |
| | 01/2019 | 2.2 | 2.4 | 0.2 |
| | 02/2019 | 5.1 | 5.9 | 0.8 |
| J Information and communication | 10/2018 | 5.6 | 7.7 | 2.1 |
| | 11/2018 | 5.5 | 7.0 | 1.5 |
| | 12/2018 | 5.0 | 2.9 | -2.1 |
| | 01/2019 | 4.6 | 6.0 | 1.4 |
| | 02/2019 | 4.6 | 7.7 | 3.1 |
| L=68 Real estate activities | 10/2018 | 5.3 | 4.3 | -1.0 |
| | 11/2018 | 4.3 | 5.9 | 1.6 |
| | 12/2018 | 2.7 | 10.8 | 8.1 |
| | 01/2019 | 5.0 | 7.9 | 2.9 |
| | 02/2019 | 4.2 | 4.8 | 0.6 |
| M Professional, scientific and technical activities | 10/2018 | 6.1 | 6.7 | 0.6 |
| | 11/2018 | 4.8 | 5.6 | 0.8 |
| | 12/2018 | 6.5 | 6.6 | 0.1 |
| | 01/2019 | 6.1 | 5.4 | -0.7 |
| | 02/2019 | 6.0 | 8.7 | 2.7 |
| N Administrative and support services activities | 10/2018 | 5.9 | 5.5 | -0.4 |
| | 11/2018 | 4.8 | 4.6 | -0.2 |
| | 12/2018 | 5.0 | 4.7 | -0.3 |
| | 01/2019 | 4.9 | 6.4 | 1.5 |
| | 02/2019 | 5.6 | 7.0 | 1.4 |
| R Arts, entertainment and recreation | 10/2018 | -4.0 | -2.6 | 1.4 |
| | 11/2018 | -0.3 | 1.1 | 1.4 |
| | 12/2018 | -3.0 | -1.1 | 1.9 |
| | 01/2019 | 0.2 | -1.0 | -1.2 |
| | 02/2019 | -3.6 | -2.4 | 1.2 |

| Industry / Reference period | | Year-on-year change, % | | Revision, percentage point |
|-----------------------------|---------|------------------------|-----------------------------|----------------------------|
| | | 1st release | Latest release (2019-05-15) | |
| S Other service activities | 10/2018 | -1.0 | 2.7 | 3.7 |
| | 11/2018 | 2.7 | 5.6 | 2.9 |
| | 12/2018 | 4.0 | 4.8 | 0.8 |
| | 01/2019 | 2.8 | 3.6 | 0.8 |
| | 02/2019 | 6.9 | 7.3 | 0.4 |

1) The 1st release refers to the time when data for the reference period were released for the first time. The revision describes the difference of annual change percentages between the first and latest release.

Revision to long-term annual changes in turnover in sectors of services

| Industry | Year | Average ¹⁾ | Average for absolute values ²⁾ |
|---|------|-----------------------|---|
| HIJLMNRS Other service activities total | 2015 | -0.8 | 0.8 |
| | 2016 | -0.9 | 0.9 |
| | 2017 | -0.9 | 1.0 |
| H Transportation and storage | 2015 | -0.4 | 0.4 |
| | 2016 | -0.4 | 0.5 |
| | 2017 | -0.3 | 0.4 |
| I Accommodation and food service activities | 2015 | -0.5 | 0.8 |
| | 2016 | -0.7 | 0.7 |
| | 2017 | 0.0 | 0.6 |
| J Information and communication | 2015 | -0.5 | 0.5 |
| | 2016 | -0.6 | 0.7 |
| | 2017 | 0.0 | 0.6 |
| L=68 Real estate activities | 2015 | -1.6 | 1.6 |
| | 2016 | -1.6 | 1.6 |
| | 2017 | -2.5 | 3.1 |
| M Professional, scientific and technical activities | 2015 | -2.0 | 2.0 |
| | 2016 | -2.1 | 2.1 |
| | 2017 | -2.7 | 2.7 |
| N Administrative and support services activities | 2015 | -0.8 | 0.8 |
| | 2016 | -1.2 | 1.2 |
| | 2017 | -1.0 | 1.0 |
| R Arts, entertainment and recreation | 2015 | -0.4 | 0.6 |
| | 2016 | -0.7 | 0.8 |
| | 2017 | -1.4 | 2.3 |
| S Other service activities | 2015 | -1.2 | 1.2 |
| | 2016 | -0.8 | 0.8 |
| | 2017 | -1.0 | 1.1 |

1) In 2015, the average was calculated from data revised between the first and seventh release months in the statistical reference year. The average for 2016 and 2017 was calculated upon completion of the data for the first and last release months in the statistical reference year, when the official structural business and financial statement statistics are also published. The data were calculated from annual changes in the original index series.

2) In 2015, the average was calculated from the absolute values of differences between the first and seventh release months. The average for 2016 and 2017 was calculated from the absolute values of differences between the first and last release months in the statistical reference year, when the official structural business and financial statement statistics are also published. The data were calculated from annual changes in the original index series.

Inquiries

Aki Niskanen 029 551 2657
Katja Liukkonen 029 551 3515
Director in charge:
Mari Ylä-Jarkko

palvelut.suhdanne@stat.fi
www.stat.fi

Source: Turnover of service industries, Statistics Finland