

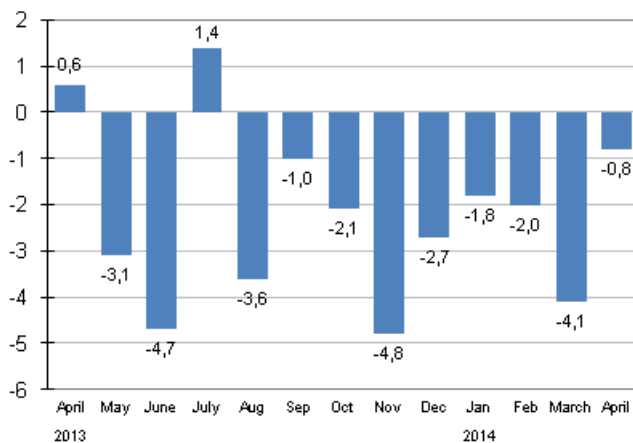
Turnover estimate of large enterprises

2014, April

Turnover of large enterprises contracted in April by 0.8 per cent from one year earlier

According to Statistics Finland's preliminary data, the turnover of large enterprises contracted by 0.8 per cent in April 2014 compared with the corresponding period of the previous year. In the January to March period, the turnover of large enterprises diminished by 2.7 per cent from the corresponding period of the year before.

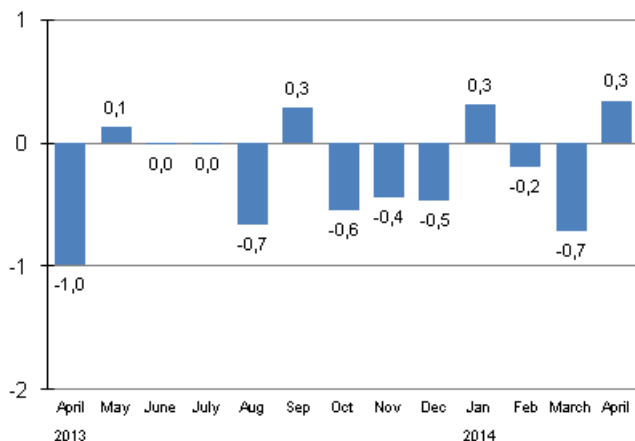
Annual change in the turnover of large enterprises, %



Source: Statistics Finland

In April, seasonally adjusted turnover grew for large enterprises by 0.3 per cent from March. In March, the seasonally adjusted turnover was 0.7 per cent and in February 0.2 per cent lower compared to the preceding month.

Seasonally adjusted change in the turnover of large enterprises from the previous month, %



Source: Statistics Finland

The turnover estimate of large enterprises is based on a sample formed of 2,000 enterprises with the most significant turnover in manufacturing, construction, trade and other service industries. Excluded from the statistics are enterprises engaged in primary production, and bank and insurance activities.

The enterprises described in the statistics make up nearly 70 per cent of the turnover of all enterprises operating in Finland, represent more than one-half of the investments made and employ good 40 per cent of the personnel of all enterprises.

The data can be used for short-term monitoring of development in business activities and the market. Because the economic development of smaller enterprises may differ from large enterprises, the economic situation of the whole enterprise sector cannot be assessed solely based on these statistics.

More detailed data on the development of various industries are published monthly on [the home pages](#) of business trend indicators.

Contents

Tables

Appendix tables

Appendix table 1. Year-on-year change of large enterprises, %.....	4
--	---

Figures

Appendix figures

Appendix figure 1. Year-on-year change of large enterprises, trend series.....	5
--	---

Appendix tables

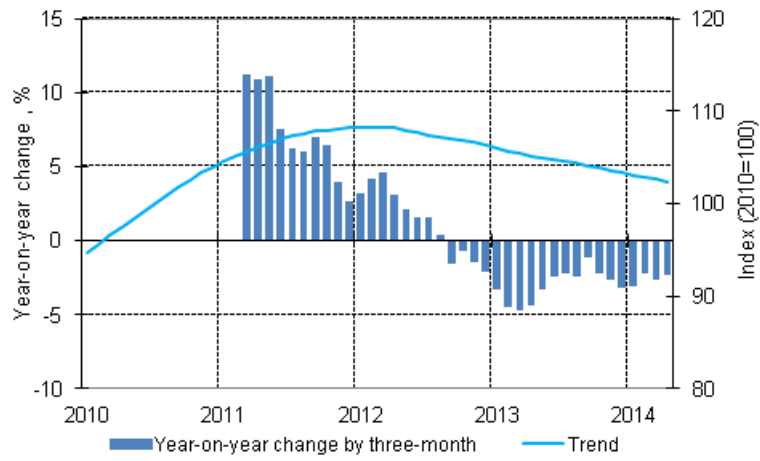
Appendix table 1. Year-on-year change of large enterprises, %

	Year-on-year change by three-month period, % ¹⁾				Cumulative year-on-year change, % ¹⁾	Year-on-year change in the latest month, % ¹⁾
	05-07/2013	08-10/2013	11/2013-01/2014	02-04/2014	01-04/2014	04/2014
Large enterprises	-2,3	-2,2	-3,1	-2,3	-2,2	-0,8

1) Year-on-year change compares the value for an examined time period to the value for the corresponding time period twelve months back.

Appendix figures

Appendix figure 1. Year-on-year change of large enterprises, trend series



Lähde: Statistics Finland

Inquiries

Jarkko Niemistö 09 1734 2951 (9.6.2014 => 029 551 2951)

Ulla Virtanen 09 1734 3347 (9.6.2014 => 029 551 3347)

Director in charge:

Hannele Orjala

palvelut.suhdanne@stat.fi

www.stat.fi

Source: Turnover estimate of large enterprises, Statistics Finland