

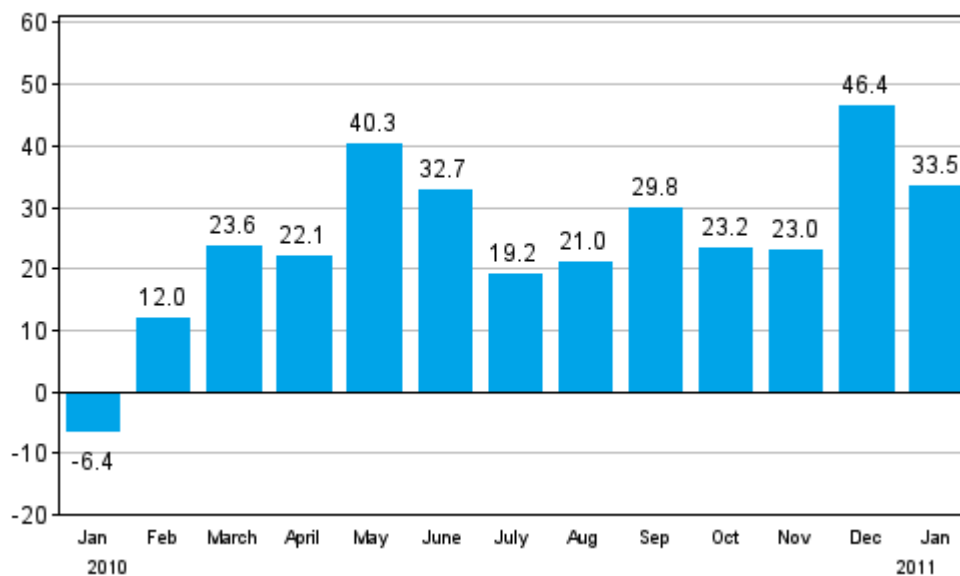
New orders in manufacturingt

2011, January

New orders in manufacturing grew by around one-third year-on-year in January

According to Statistics Finland, the value of new orders in manufacturing was 33.5 per cent higher in January 2011 than twelve months earlier. The value has now been going up continuously since February 2010.

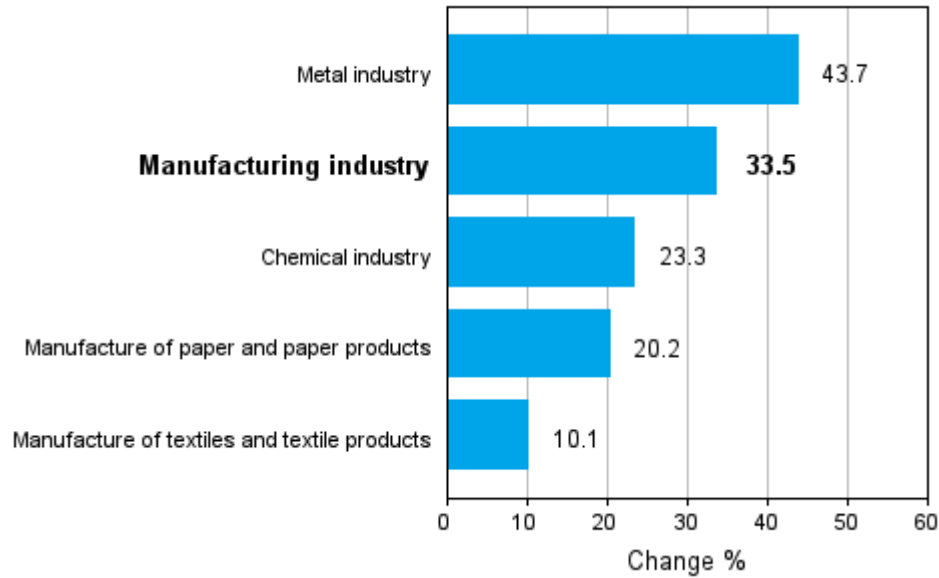
Change in new orders in manufacturing from corresponding month of the previous year (original series), % (TOL 2008)



Strong growth of new orders continued in manufacturing through January. As in the preceding months, the value of new orders rose in all the examined main industries. The growth was strongest in the metal industry, where the value of orders was as much as 43.7 per cent up on the year before. Despite the strong growth, the value of the new orders in the metal industry was still fairly low, so some of the growth is explained by the weak situation in the respective period of the comparison year. Orders grew by 23.3 per cent in the chemical industry, by 20.2 per cent in the manufacture of paper, and paper and board products, and by 10.1 per cent in the textile industry.

When interpreting these statistics it should be borne in mind that orders in manufacturing typically show strong monthly fluctuations. Even new orders of substantial value are not examined over extended time periods but for the statistical reference month only.

Change in new orders in manufacturing 01/2010-01/2011 (TOL 2008)



The index of new orders in manufacturing describes development in the value of new orders received by enterprises for commodities and services that are meant to be produced by establishments located in Finland. These statistics are based on non-probability sampling, in which the basic observation unit is an enterprise or a kind-of-activity unit. The sample comprises monthly approximately 400 to 430 enterprises or their kind-of-activity units. Index point figures and annual change percentages are published monthly for five industry categories. The time series start from January 2005 and their base year is 2005 (2005=100). A detailed description of the statistics and the calculation method are included in the quality description on the home page of the statistics.

Contents

Tables

Appendix tables

Appendix table 1. Three-month moving change, cumulative change and change in the latest month, year-on-year, % (TOL 2008).....4

Figures

Appendix figures

Appendix figure 1. New orders in manufacturing, trend series by industry (TOL 2008).....5

Appendix tables

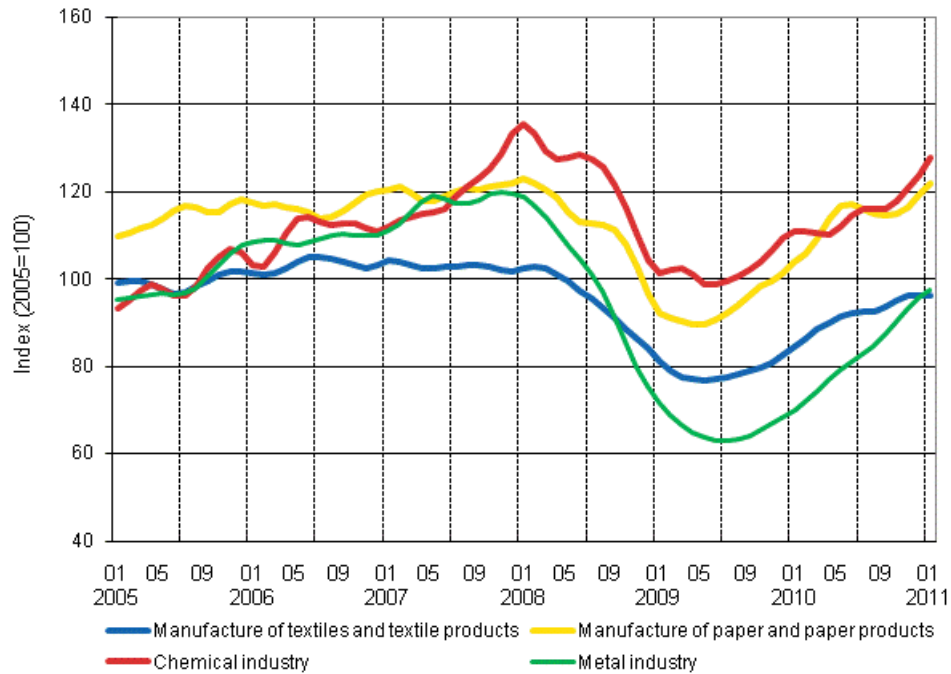
Appendix table 1. Three-month moving change, cumulative change and change in the latest month, year-on-year, % (TOL 2008)

	Year-on-year change by three-month period, % ¹⁾				Cumulative year-on-year change, % ¹⁾	Year-on-year change in the latest month, % ¹⁾
	02-04/2010	05-07/2010	08-10/2010	11/10-01/11	01-01/2011	01/2011
Manufacturing industry (13-14, 17, 20-21, 24-30)	19,4	31,0	24,8	34,1	33,5	33,5
Manufacture of textiles and textile products (13-14)	17,1	23,3	13,6	19,9	10,1	10,1
Manufacture of paper and paper products (17)	24,1	30,1	17,7	19,0	20,2	20,2
Chemical industry (20-21)	6,8	17,5	15,5	15,2	23,3	23,3
Metal industry (24-30)	20,4	34,5	30,6	44,9	43,7	43,7

1) Year-on-year change compares the value for an examined time period to the value for the corresponding time period twelve months back.

Appendix figures

Appendix figure 1. New orders in manufacturing, trend series by industry (TOL 2008)



Inquiries

Eetu Toivanen (09) 1734 3331

Kari Rautio (09) 1734 2479

Director in charge:

Hannele Orjala

volyyimi.indeksi@stat.fi

www.stat.fi

Source: New orders in manufacturing 2011, January. Statistics Finland