

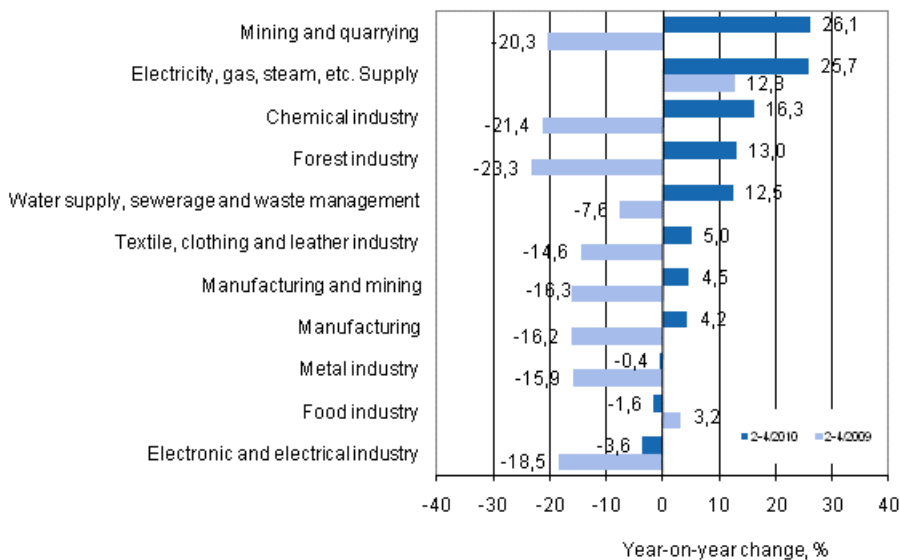
Index of turnover in industry

2010, April

Turnover in manufacturing grew by good 4 per cent in February to April from the year before

According to Statistics Finland, in the February to April period of 2010 turnover in manufacturing was 4.2 per cent higher than in the corresponding period of the year before. Domestic sales grew by four per cent and export turnover by 4.4 per cent from one year ago.

Annual change in turnover in selected manufacturing industries during 2-4/2010, % (TOL 2008)



Source: Statistics Finland

Correction. The figure was corrected on 29 July 2010. The heading of the figure previously had an erroneous time period 1-4/2010.

Turnover went up from the corresponding quarter of the previous year in nearly all sub-industries. The largest growths were seen in mining and quarrying (26.1%) and in electricity, gas, steam and air conditioning

supply (25.7%). Turnover contracted slightly in three sub-industries: the electronic and electrical industry (-3.6%), the food industry (-1.6%) and the metal industry (-0.4%).

The index of turnover in industry describes enterprises whose main industry is manufacturing. The calculation of the indices is based on the Tax Administration's value added tax data which are supplemented with data obtained with Statistics Finland's sales inquiry. The monthly turnovers of manufacturing enterprises can vary considerably, especially in the metal industries. The variation is mainly due to invoicing practices. The final invoice for major machinery deliveries and projects may be recorded in the sales of one month, even if the delivery had required the work of several months or years.

Tax account reform causes revisions to the data of turnover indices

Starting from data on January 2010, the turnover indices will be compiled from data on the periodic tax returns allowed in the Tax Administration's tax account reform. According to our analysis the impact on these statistics from the implemented tax account reform will remain quite minor. However, slightly less data than before will be available for January 2010, which may mean that the January time series of the turnover indices become slightly revised in future releases. Further information about the impacts of the changes in the data on the turnover indices can be found under [Revisions in these statistics](#). Information about the tax account reform is also available on the Tax Administration's website at: www.vero.fi.

Contents

Tables

Appendix tables

Appendix table 1. Three-month moving change, cumulative change and change in the latest month, year-on-year, % (TOL 2008).....	4
--	---

Figures

Appendix figures

Appendix figure 1. Trend series on total turnover, domestic turnover and export turnover in manufacturing 1/1995-4/2010.....	5
Appendix figure 2. Trend series on total turnover, domestic turnover and export turnover in the forest industry 1/1995-4/2010.....	5
Appendix figure 3. Trend series on total turnover, domestic turnover and export turnover in the chemical industry 1/1995-4/2010.....	6
Appendix figure 4. Trend series on total turnover, domestic turnover and export turnover in the electronic and electrical industry 1/1995-4/2010.....	6

Appendix tables

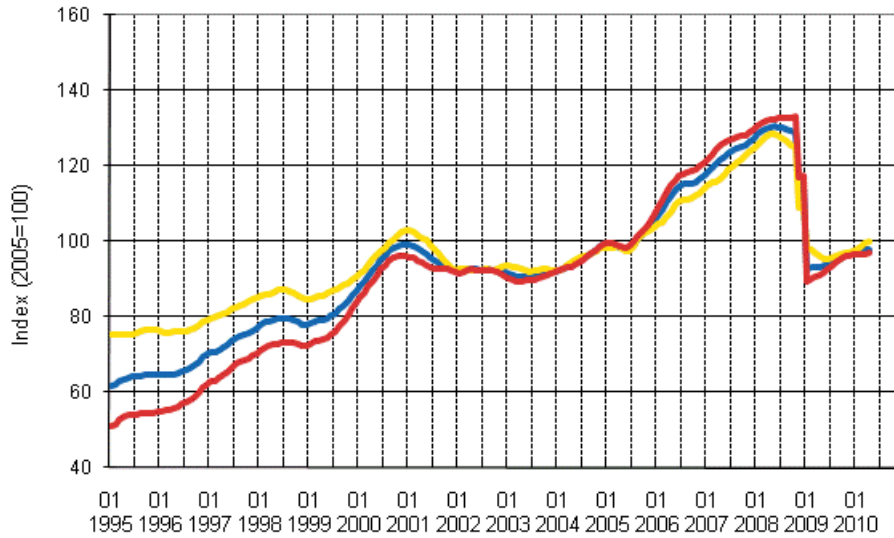
Appendix table 1. Three-month moving change, cumulative change and change in the latest month, year-on-year, % (TOL 2008)

	Year-on-year change by three-month period, % ¹⁾				Cumulative year-on-year change, % ¹⁾	Year-on-year change in the latest month, % ¹⁾
	05-07/2009	08-10/2009	11/09-01/10	02-04/2010	01-04/2010	04/2010
Manufacturing (C)	-29,3	-23,5	-9,2	4,2	4,2	5,6
Food industry (10-12)	-3,2	-5,1	-2,7	-1,6	-2,8	-10,6
Textile and clothing industry (13-15)	-15,2	-14,5	-3,9	5,0	2,6	13,5
Forest industry (16-17)	-28,4	-22,6	-0,9	13,0	11,4	24,0
Chemical industry (19-22)	-36,3	-23,1	5,9	16,3	18,7	6,3
Electronic and electrical industry (26-27)	-30,0	-37,4	-15,8	-3,6	3,4	3,3
Metal industry (24-30)	-33,2	-27,5	-16,8	-0,4	0,0	3,4
Mining and quarrying (B)	-20,2	-16,4	13,7	26,1	23,6	23,5
Electricity, gas, steam, etc. supply (D)	-9,7	-17,4	8,1	25,7	26,5	14,6
Water supply, sewerage and waste management (E)	-23,6	-13,3	1,2	12,5	10,0	19,4

1) Year-on-year change compares the value for an examined time period to the value for the corresponding time period twelve months back.

Appendix figures

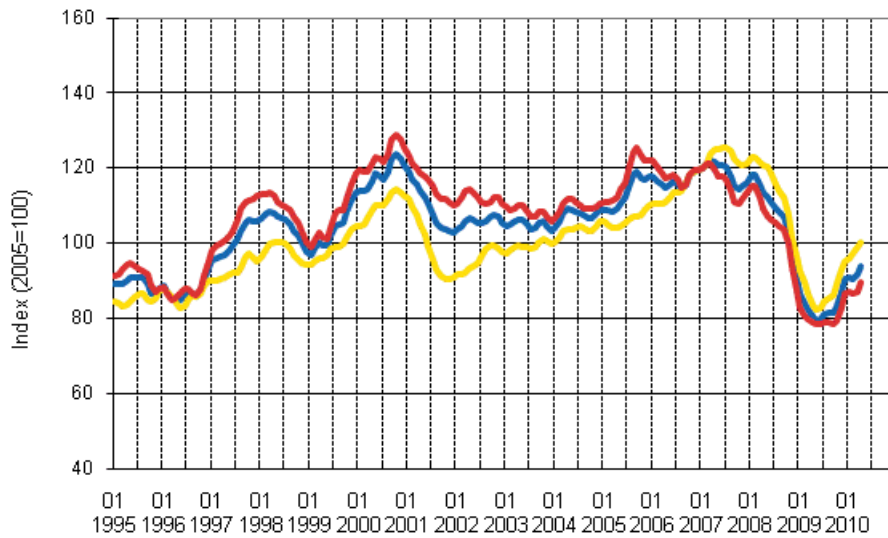
Appendix figure 1. Trend series on total turnover, domestic turnover and export turnover in manufacturing 1/1995-4/2010



Source: Statistics Finland



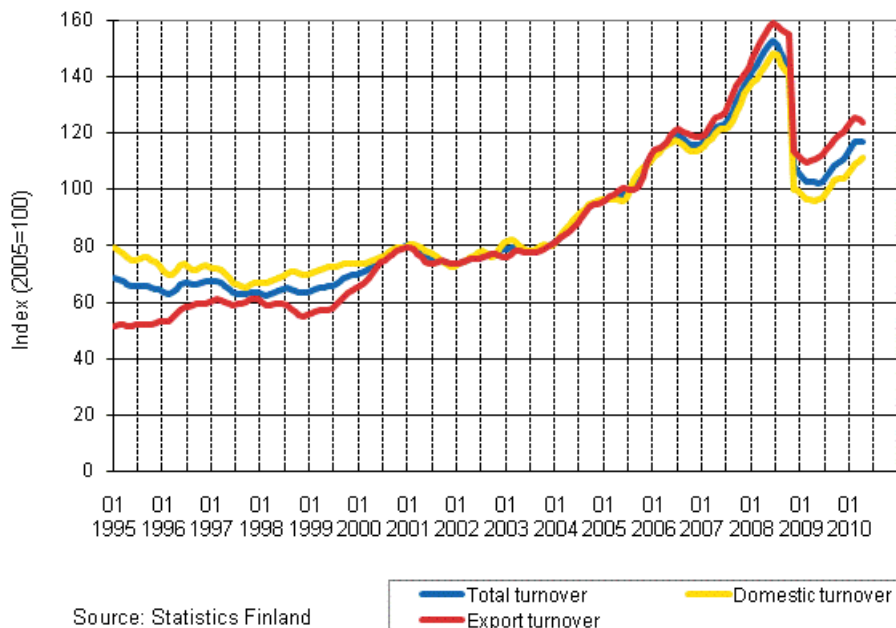
Appendix figure 2. Trend series on total turnover, domestic turnover and export turnover in the forest industry 1/1995-4/2010



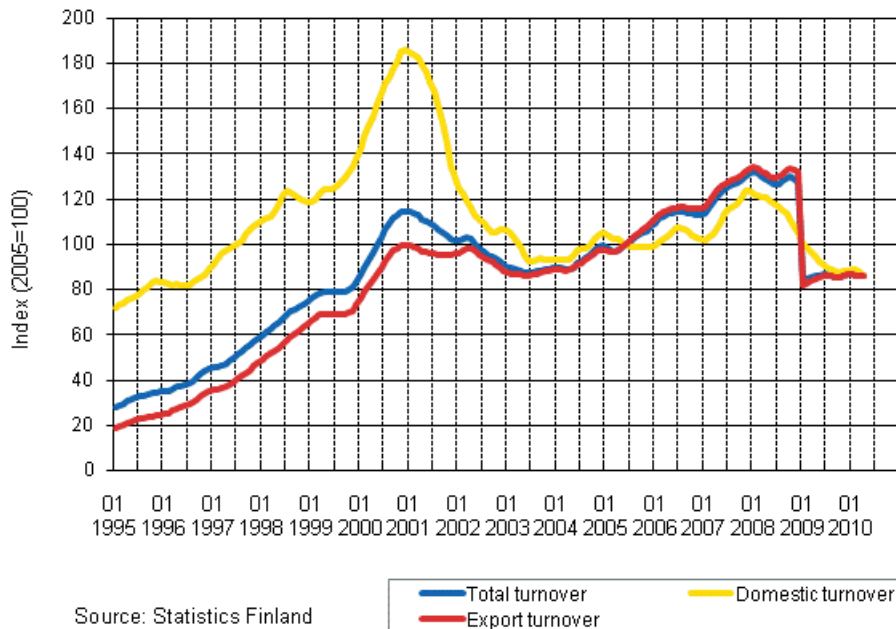
Source: Statistics Finland



Appendix figure 3. Trend series on total turnover, domestic turnover and export turnover in the chemical industry 1/1995-4/2010



Appendix figure 4. Trend series on total turnover, domestic turnover and export turnover in the electronic and electrical industry 1/1995-4/2010



Suomen virallinen tilasto
Finlands officiella statistik
Official Statistics of Finland

Manufacturing 2010

Inquiries

Ulla Virtanen (09) 1734 3331

Kirsi-Maaria Manninen (09) 1734 2681

Director in charge:

Hannele Orjala

volyyimi.indeksi@stat.fi

www.stat.fi