

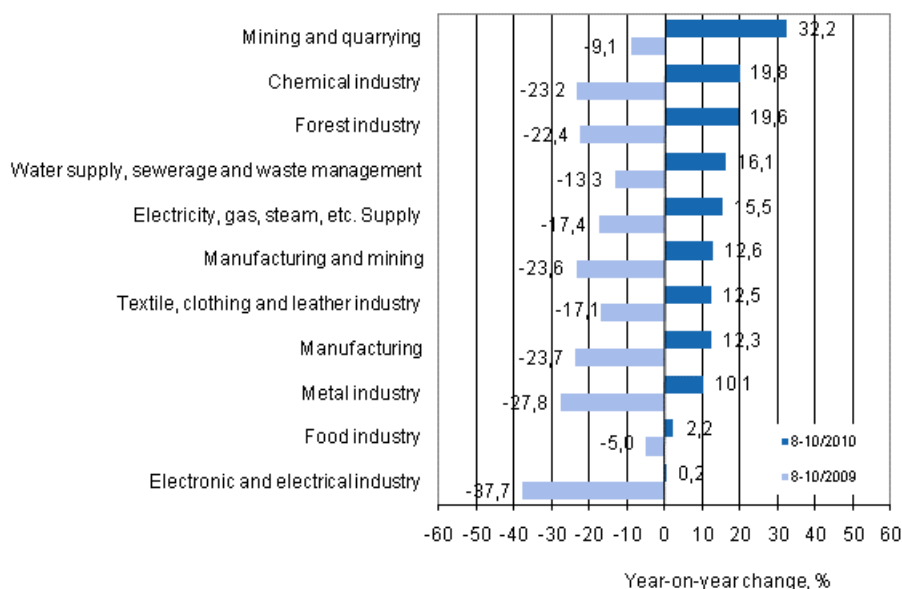
# Index of turnover in industry

2010, October

## Turnover in manufacturing grew by good 12 per cent in August to October from the year before

According to Statistics Finland, in the August to October period of 2010 turnover in manufacturing was 12.3 per cent up on the corresponding period of the year before. Domestic sales grew by 13.2 per cent and export turnover by 11.7 per cent from one year ago.

### Annual change in turnover in selected manufacturing industries during 8–10/2010 and 8–10/2009, % (TOL 2008)



Source: Statistics Finland

Turnover went up in all sub-industries from the corresponding period of the previous year. The growth was strongest in mining and quarrying (32.2%), the chemical industry (19.8%) and the forest industry (19.6%). Growth in turnover was slowest in the electronic and electrical industry (0.2%) and the food industry (2.2%).

The index of turnover in industry describes enterprises whose main industry is manufacturing. The calculation of the indices is based on the Tax Administration's value added tax data which are supplemented with data obtained with Statistics Finland's sales inquiry. The monthly turnovers of manufacturing enterprises can vary considerably, especially in the metal industries. The variation is mainly due to invoicing practices. The final invoice for major machinery deliveries and projects may be recorded in the sales of one month, even if the delivery had required the work of several months or years.

A processing error, which had an effect on the data on exports and domestic sales for September 2010, was corrected in this release. The error did not influence the data on total turnover.

# Contents

## Tables

### Appendix tables

Appendix table 1. Year-on-year change in turnover by industry, % (TOL 2008).....	4
----------------------------------------------------------------------------------	---

## Figures

### Appendix figures

Appendix figure 1. Trend series on total turnover, domestic turnover and export turnover in manufacturing 1/1995–10/2010.....	5
Appendix figure 2. Trend series on total turnover, domestic turnover and export turnover in the forest industry 1/1995–10/2010.....	5
Appendix figure 3. Trend series on total turnover, domestic turnover and export turnover in the chemical industry 1/1995–10/2010.....	6
Appendix figure 4. Trend series on total turnover, domestic turnover and export turnover in the electronic and electrical industry 1/1995–10/2010.....	6

## Appendix tables

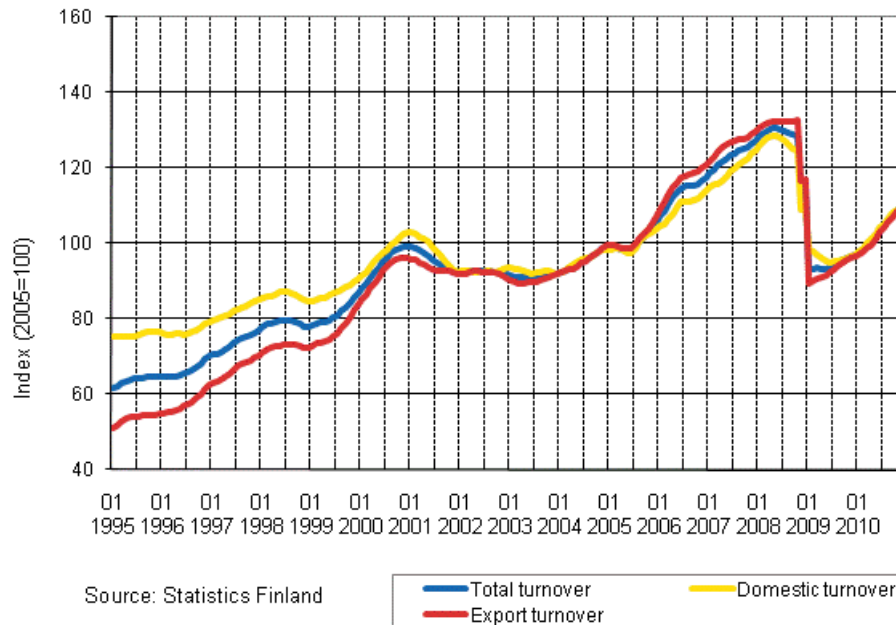
**Appendix table 1. Year-on-year change in turnover by industry, % (TOL 2008)**

	Year-on-year change by three-month period, % <sup>1)</sup>				Cumulative year-on-year change, % <sup>1)</sup>	Year-on-year change in the latest month, % <sup>1)</sup>
	11/09-01/10	02-04/2010	05-07/2010	08-10/2010	01-10/2010	10/2010
Manufacturing (C)	-10,4	4,4	12,8	12,3	8,8	10,4
Food industry (10-12)	-2,8	-1,7	1,0	2,2	-0,2	-0,2
Textile and clothing industry (13-15)	-4,6	4,2	8,4	12,5	7,4	14,2
Forest industry (16-17)	-0,8	12,9	33,6	19,6	20,5	11,0
Chemical industry (19-22)	5,9	16,5	18,1	19,8	18,9	17,8
Electronic and electrical industry (26-27)	-20,8	0,0	-0,1	0,2	-0,2	4,6
Metal industry (24-30)	-18,7	0,3	8,1	10,1	4,9	10,1
Mining and quarrying (B)	15,4	25,0	28,3	32,2	27,3	32,0
Electricity, gas, steam, etc. supply (D)	8,1	25,7	13,3	15,5	20,1	16,1
Water supply, sewerage and waste management (E)	-2,1	17,5	26,8	16,1	17,5	3,6

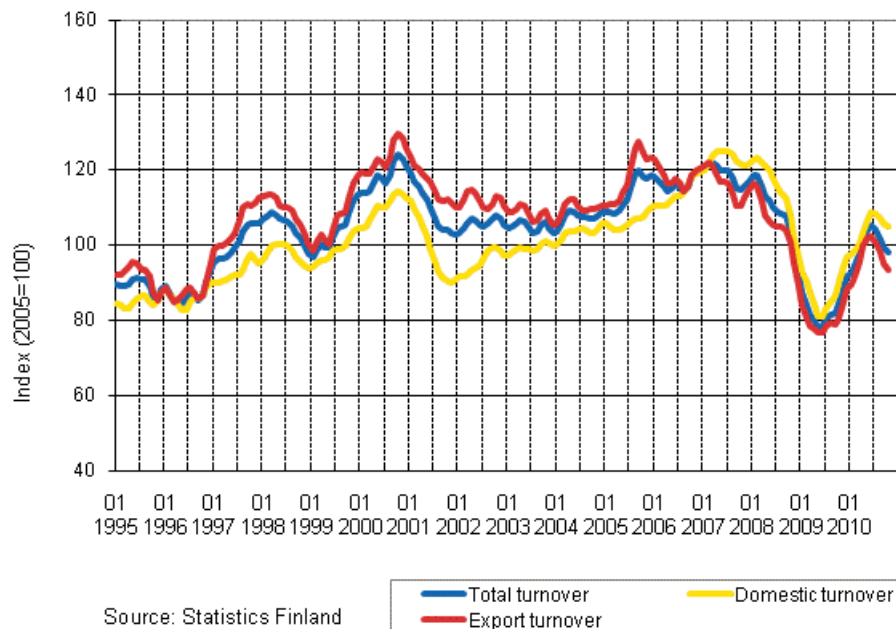
1) Year-on-year change compares the value for an examined time period to the value for the corresponding time period twelve months back.

## Appendix figures

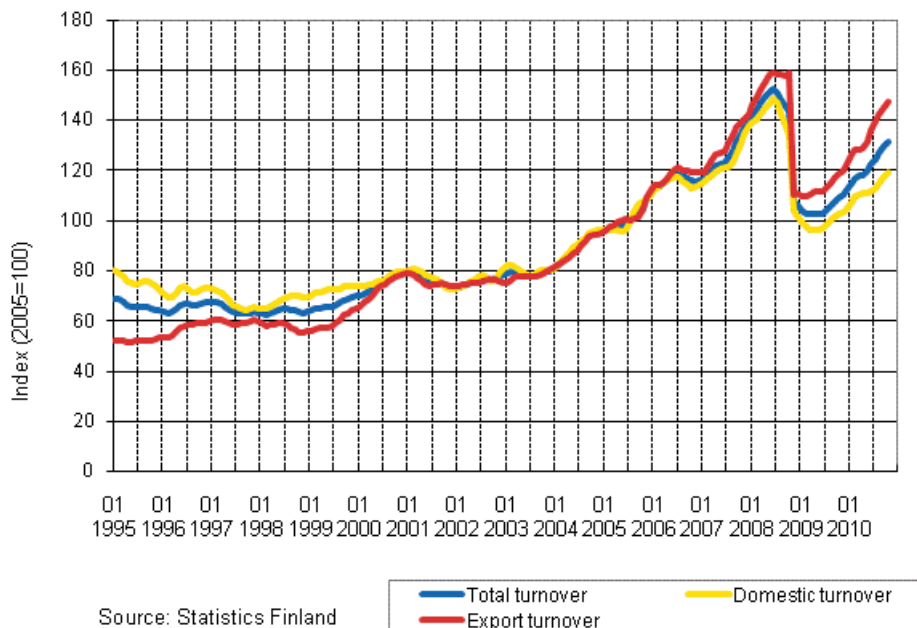
**Appendix figure 1. Trend series on total turnover, domestic turnover and export turnover in manufacturing 1/1995–10/2010**



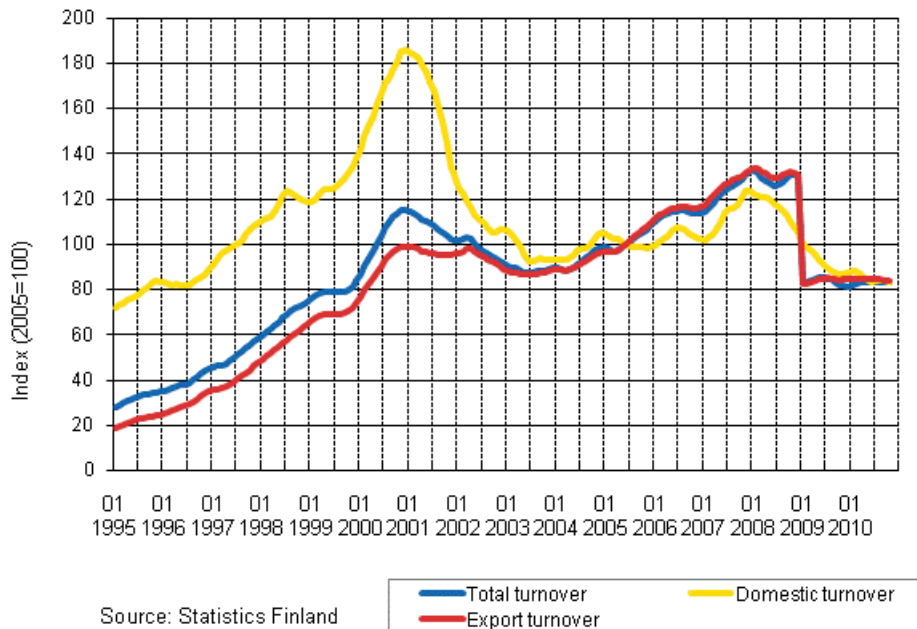
**Appendix figure 2. Trend series on total turnover, domestic turnover and export turnover in the forest industry 1/1995–10/2010**



**Appendix figure 3. Trend series on total turnover, domestic turnover and export turnover in the chemical industry 1/1995–10/2010**



**Appendix figure 4. Trend series on total turnover, domestic turnover and export turnover in the electronic and electrical industry 1/1995–10/2010**



---

Suomen virallinen tilasto  
Finlands officiella statistik  
Official Statistics of Finland

Manufacturing 2011

### Inquiries

Kirsi Ristola (09) 1734 2430

Kirsi-Maaria Manninen (09) 1734 2681

Director in charge:

Hannele Orjala

[volyyimi.indeksi@stat.fi](mailto:volyyimi.indeksi@stat.fi)

[www.stat.fi](http://www.stat.fi)

Source: Index of turnover in industry 2010, October, Statistics Finland