

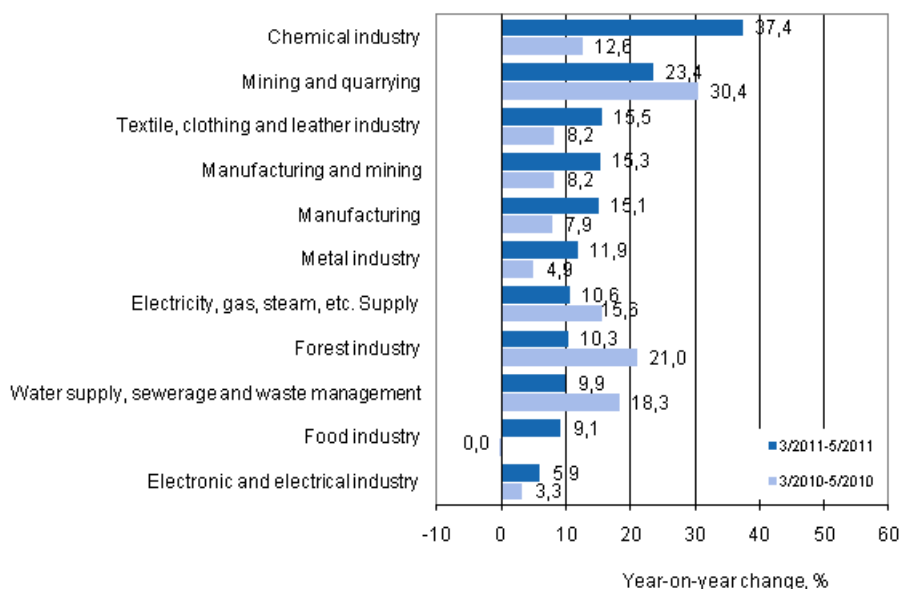
Index of turnover in industry

2011, May

Turnover in manufacturing grew by 15 per cent in March to May from the year before

According to Statistics Finland, in the past March to May period turnover in manufacturing was 15.1 per cent up on the corresponding period of the year before. Domestic sales grew by 15.5 per cent and export turnover by 14.9 per cent from one year ago.

Annual change in turnover in selected manufacturing industries during 3/2011–5/2011 and 3/2010–5/2010, % (TOL 2008)



Source: Statistics Finland

Turnover went up from the corresponding period of the previous year in all sub-industries. The growth was strongest in the chemical industry (37.4%), in mining and quarrying (23.4%) and in the textile, clothing and leather industry (15.5%). The growth of turnover was slowest in the electrical and electronic industry (5.9%) and in the food industry (9.1%).

The index of turnover in industry describes enterprises whose main industry is manufacturing. The calculation of the indices is based on the Tax Administration's value added tax data which are supplemented with data obtained with Statistics Finland's sales inquiry. The monthly turnovers of manufacturing enterprises can vary considerably, especially in the metal industries. The variation is mainly due to invoicing practices. The final invoice for major machinery deliveries and projects may be recorded in the sales of one month, even if the delivery had required the work of several months or years.

Contents

Tables

Appendix tables

| | |
|--|---|
| Appendix table 1. Year-on-year change in turnover by industry, % (TOL 2008)..... | 4 |
|--|---|

Figures

Appendix figures

| | |
|--|---|
| Appendix figure 1. Trend series on total turnover, domestic turnover and export turnover in manufacturing 1/1995–5/2011..... | 5 |
| Appendix figure 2. Trend series on total turnover, domestic turnover and export turnover in the forest industry 1/1995–5/2011..... | 5 |
| Appendix figure 3. Trend series on total turnover, domestic turnover and export turnover in the chemical industry 1/1995–5/2011..... | 6 |
| Appendix figure 4. Trend series on total turnover, domestic turnover and export turnover in the electronic and electrical industry 1/1995–5/2011..... | 6 |

Appendix tables

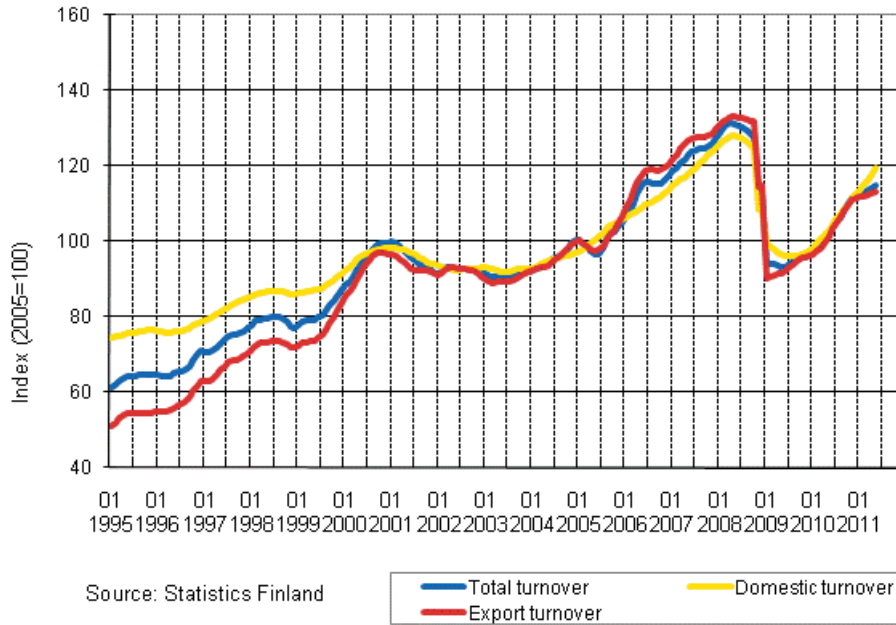
Appendix table 1. Year-on-year change in turnover by industry, % (TOL 2008)

| | Year-on-year change by three-month period, % ¹⁾ | | | | Cumulative year-on-year change, % ¹⁾ | Year-on-year change in the latest month, % ¹⁾ |
|---|--|------------|-------------|------------|---|--|
| | 06-08/2010 | 09-11/2010 | 12/10-02/11 | 03-05/2011 | 01-05/2011 | 05/2011 |
| Manufacturing (C) | 12,7 | 15,3 | 16,9 | 15,1 | 14,8 | 15,6 |
| Food industry (10-12) | 1,8 | 4,4 | 5,3 | 9,1 | 8,0 | 11,7 |
| Textile and clothing industry (13-15) | 5,6 | 21,6 | 11,8 | 15,5 | 11,9 | 22,0 |
| Forest industry (16-17) | 30,9 | 16,9 | 15,4 | 10,3 | 11,3 | 5,4 |
| Chemical industry (19-22) | 22,1 | 23,4 | 29,8 | 37,4 | 31,4 | 44,5 |
| Electronic and electrical industry (26-27) | -3,0 | 7,3 | 4,4 | 5,9 | 2,5 | 3,3 |
| Metal industry (24-30) | 7,0 | 15,0 | 16,5 | 11,9 | 12,6 | 11,7 |
| Mining and quarrying (B) | 27,5 | 31,0 | 36,0 | 23,4 | 27,2 | 7,5 |
| Electricity, gas, steam, etc. supply (D) | 13,3 | 19,8 | 8,5 | 10,6 | 4,8 | 18,3 |
| Water supply, sewerage and waste management (E) | 20,9 | 14,4 | 26,7 | 9,9 | 16,4 | 6,1 |

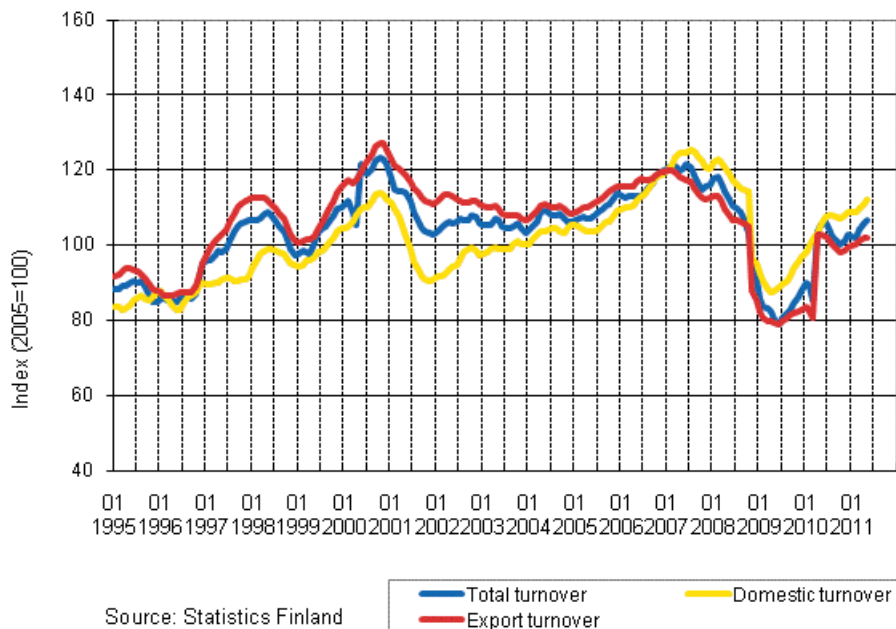
1) Year-on-year change compares the value for an examined time period to the value for the corresponding time period twelve months back.

Appendix figures

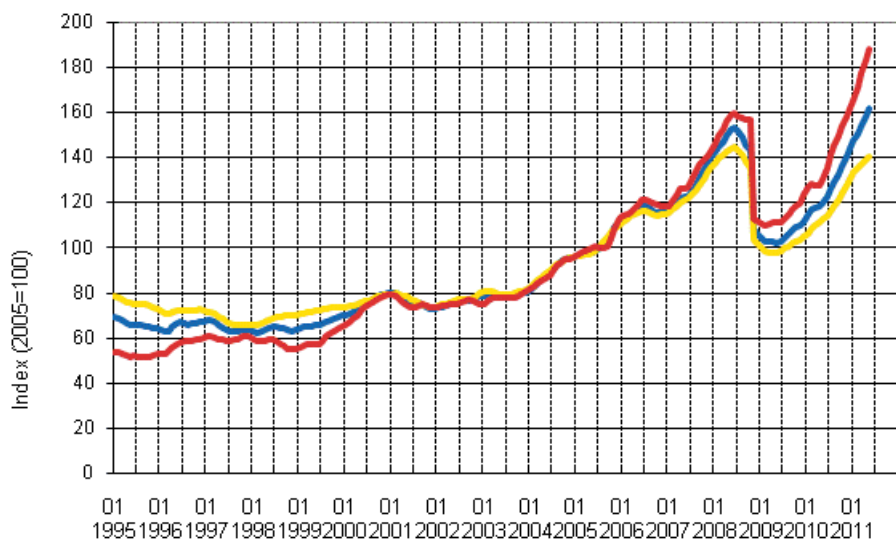
Appendix figure 1. Trend series on total turnover, domestic turnover and export turnover in manufacturing 1/1995–5/2011



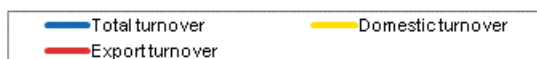
Appendix figure 2. Trend series on total turnover, domestic turnover and export turnover in the forest industry 1/1995–5/2011



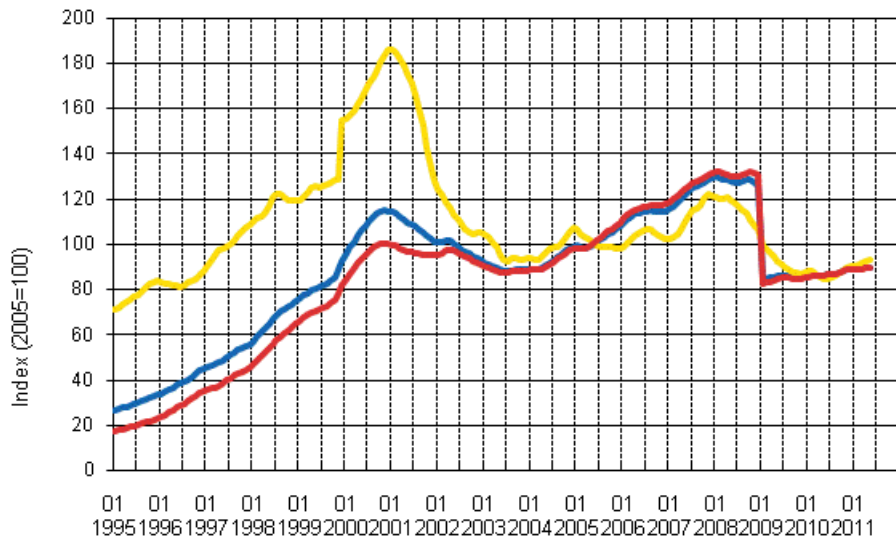
Appendix figure 3. Trend series on total turnover, domestic turnover and export turnover in the chemical industry 1/1995–5/2011



Source: Statistics Finland



Appendix figure 4. Trend series on total turnover, domestic turnover and export turnover in the electronic and electrical industry 1/1995–5/2011



Source: Statistics Finland



Suomen virallinen tilasto
Finlands officiella statistik
Official Statistics of Finland

Manufacturing 2011

Inquiries

Heli Suonio (09) 1734 2481

Director in charge:

Hannele Orjala

myynti.teollisuus@stat.fi

www.stat.fi

Source: Index of turnover in industry 2011, May, Statistics Finland