

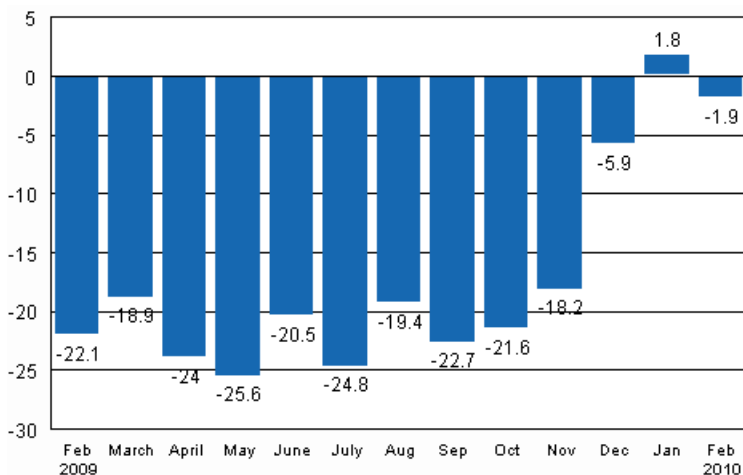
Volume index of industrial output

2010, February

Industrial output contracted by 1.9 per cent in February

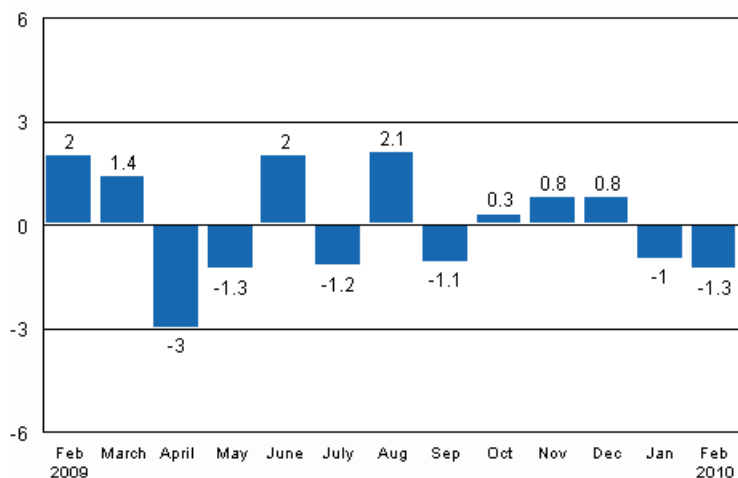
According to Statistics Finland, output of total industries adjusted for working days was 1.9 per cent lower in February 2010 than twelve months earlier. In January output was 1.8 per cent higher than one year before.

Working day adjusted change in industrial output (BCDE) from corresponding month previous year, %, TOL 2008



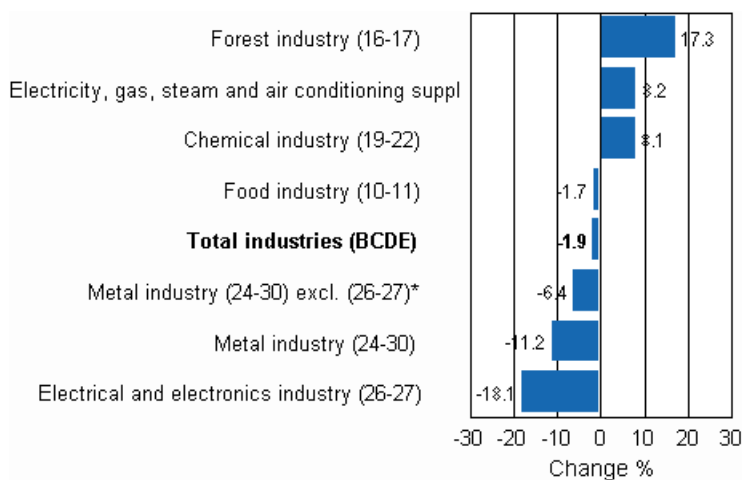
Seasonally adjusted output continued to fall in February compared with the previous month. In February output contracted by 1.3 per cent from January. In January output fell by one per cent from December.

Seasonally adjusted change in industrial output (BCDE) from previous month, %, TOL 2008



In the forest industry output adjusted for working days was in February 17.3 per cent higher than one year before. Due to the cold February, production of electricity and heat grew by 8.2 per cent from February 2009. Output in the chemical industry continued to grow and in February it exceeded the previous year's level by 8.1 per cent. The biggest fall occurred in the electrical and electronic industry, where output in February was 18.1 per cent lower than one year before. Output in the other metal industry also continued to decline. A fall of 6.4 per cent was recorded in February.

Working day adjusted change in industrial output by industry 2/2009-2/2010, %, TOL 2008



Capacity utilisation rate in manufacturing was 73.2 per cent in February. One year before it was 70.1 per cent. Capacity utilisation rate in the forest industry rose in February to 87.3 per cent, which was nearly 20 percentage points higher than one year before. Capacity utilisation rate in the chemical industry was 82.1 per cent. Capacity utilisation rate in the chemical industry rose by nearly five percentage points from one year previously.

Estimation

From this release onwards Statistics Finland has increased the use of estimation. In many months of the year estimation is used in industry 26-27 Electrical and electronics industry. The weight of this industry is nearly 20 per cent in total industries. In addition, the Tax Administration's payment control data are used to compile statistics on the production of enterprises with fewer than 50 employees. Enterprises with fewer than 50 employees account for around 13 per cent of total industries and these data cover nearly 70 per cent of the production of enterprises with fewer than 50 employees. These data are not at Statistics Finland's disposal by the release date of the volume index of industrial output. For this reason the data on these enterprises are estimated for the month the release relates to. The payment control data will be available when releasing data for that month for the second time. An exception to this procedure is this year's January. Due to the Tax

Administration's tax reform the quality of the data proved to be poor for statistical purposes and therefore January is also still estimated.

Revised data for January and February will be published at 9 am on 10 May 2010 in connection with the release of industrial output data for March. Because of the method used, seasonally adjusted figures for previous months may change even if the original figures do not become revised. The seasonally adjusted figures will also be adjusted for working days.

Contents

Industrial output contracted by 1.9 per cent in February	5
Figures	
Working day adjusted change percentage of industrial output February 2009 / February 2010, TOL 2008...	7
Seasonally adjusted change percentage of industrial output January 2010 / February 2010, TOL 2008.....	7
Trend of industrial output Finland, Germany, Sweden, France and United Kingdom (BCD) 2000 - 2010, 2005=100, TOL 2008.....	8

Industrial output contracted by 1.9 per cent in February

According to Statistics Finland, output of total industries adjusted for working days was 1.9 per cent lower in February 2010 than twelve months earlier. Seasonally adjusted output also contracted in relation to February. In contrast, in January output adjusted for working days grew by 1.8 per cent from January 2009. However, seasonally adjusted output contracted by one per cent from last year's December.

Output in mining and quarrying increased by two per cent in February year-on-year. Output in industry adjusted for working days was also nearly four per cent down on February 2009. Output in electricity, gas, steam and air conditioning supply continued in February its growth that had started in last year's December. The cold February raised the production of electricity and heat by 8.2 per cent from the year before. The whole industry, excluding production of electricity, fell by nearly four per cent in February and by good two per cent in January from one year back.

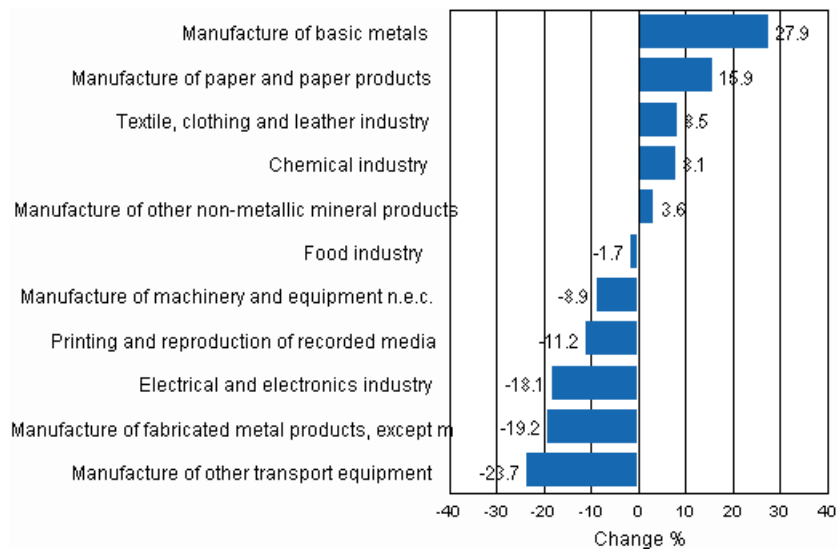
Volume index of industrial output, value added, original, working day adjusted, seasonally adjusted change percentage

Industry (Tol 2008)	Value added share	Original change percentage, 2010 FEB / 2009 FEB	Working day adj. change percentage, 2010 FEB / 2009 FEB	Seasonal adj. change percentage, 2010 FEB / 2010 JAN
Total industries	100,0	-1,9	-1,9	-1,3
B Mining and quarrying	1,3	2,0	2,0	19,8
C Manufacturing	86,1	-3,7	-3,7	-0,1
10 Manufacture of food products	5,0	-1,0	-1,0	1,9
11 Manufacture of beverages	0,9	-6,0	-6,0	5,0
13 Manufacture of textiles	0,6	13,2	13,2	9,6
14 Manufacture of wearing apparel	0,4	-2,3	-2,3	6,7
15 Manufacture of leather and related products	0,2	17,9	18,0	-8,1
16 Manufacture of wood and of products of wood and cork, except furniture; manufacture of articles of straw and plaiting materials	4,6	20,5	20,5	-0,2
17 Manufacture of paper and paper products	8,3	15,9	15,9	1,7
18 Printing and reproduction of recorded media	1,8	-11,2	-11,2	-0,7
23 Manufacture of other non-metallic mineral products	3,2	3,6	3,6	-0,8
24 Manufacture of basic metals	6,1	28,1	27,9	5,0
25 Manufacture of fabricated metal products, except machinery and equipment	7,8	-19,3	-19,2	-4,9
28 Manufacture of machinery and equipment n.e.c.	9,7	-8,9	-8,9	5,5
29 Manufacture of motor vehicles, trailers and semi-trailers	1,2	-14,8	-14,8	-8,7
30 Manufacture of other transport equipment	1,2	-34,6	-34,6	-14,8
31 Manufacture of furniture	1,2	-16,5	-16,5	-0,8
32 Other manufacturing	1,1	-19,0	-19,0	-0,8
33 Repair and installation of machinery and equipment	3,0	-13,8	-13,8	-3,4
D Electricity, gas, steam and air conditioning supply	11,6	8,2	8,2	-0,8
E Water supply; sewerage, waste management and remediation activities	1,1	1,9	1,9	1,3
36 Water collection, treatment and supply	0,8	1,9	1,9	0,4
Main industrial groupings:				
Raw materials and productive goods	38,6	8,9	8,9	2,1
Investment goods	34,2	-16,8	-16,8	-4,3
Durable goods	1,5	-16,4	-16,3	-1,1
Other consumer goods	10,5	-3,9	-3,9	0,9
Special indices:				
10-11 Food industry	5,9	-1,7	-1,7	1,5
13-15 Textile, clothing and leather industry	1,3	8,5	8,5	6,9
16-17 Forest industry	12,8	17,4	17,3	1,6
19-22 Chemical industry	10,6	8,1	8,1	14,0
24-30 Metal industry	45,1	-11,2	-11,2	-2,0
26-27 Electrical and electronics industry	19,2	-18,1	-18,1	-4,8
25,28-30,33 Machinery and metal product industry	22,8	-15,0	-15,0	0,8
29-30 Manufacture of transport equipment	2,4	-23,7	-23,7	-13,1

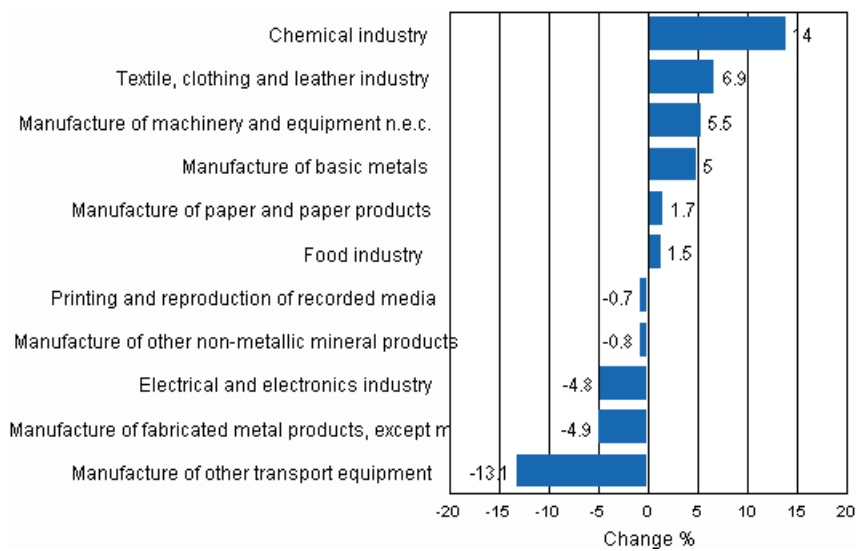
1) 2005=100

Figures

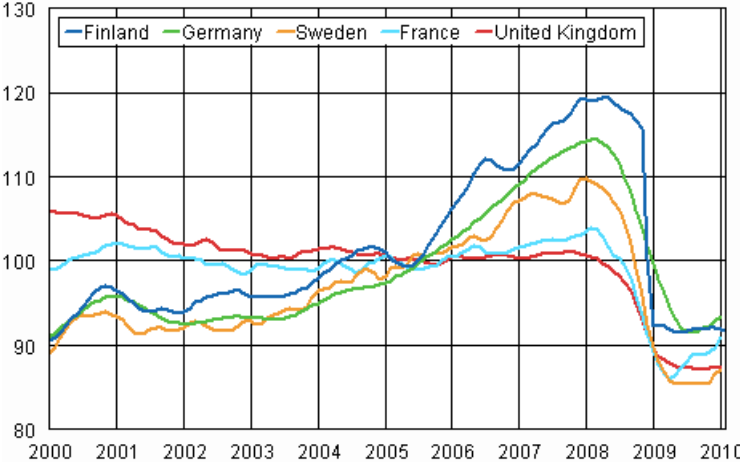
Working day adjusted change percentage of industrial output February 2009 / February 2010, TOL 2008



Seasonally adjusted change percentage of industrial output January 2010 / February 2010, TOL 2008



Trend of industrial output Finland, Germany, Sweden, France and United Kingdom (BCD) 2000 - 2010, 2005=100, TOL 2008



Suomen virallinen tilasto
Finlands officiella statistik
Official Statistics of Finland

Industry 2010

Inquiries

Aki Savolainen (09) 1734 2703

Kari Rautio (09) 1734 2479

Director in charge:

Hannele Orjala

volyyimi.indeksi@stat.fi

www.stat.fi