

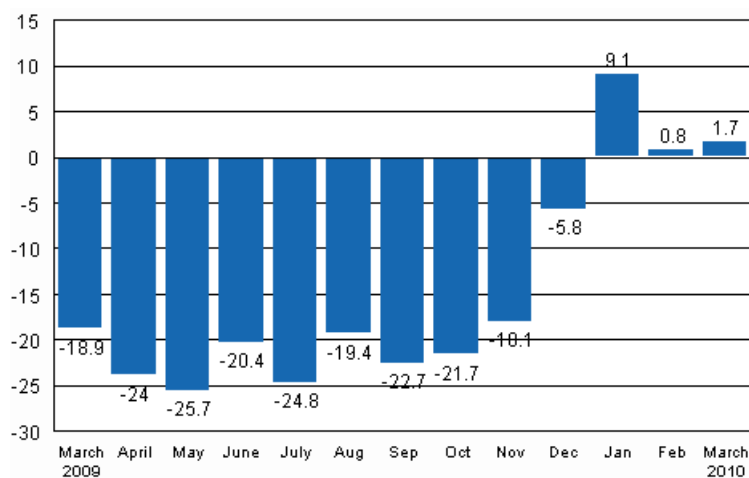
# Volume index of industrial output

2010, March

## Industrial output grew by 1.7 per cent in March

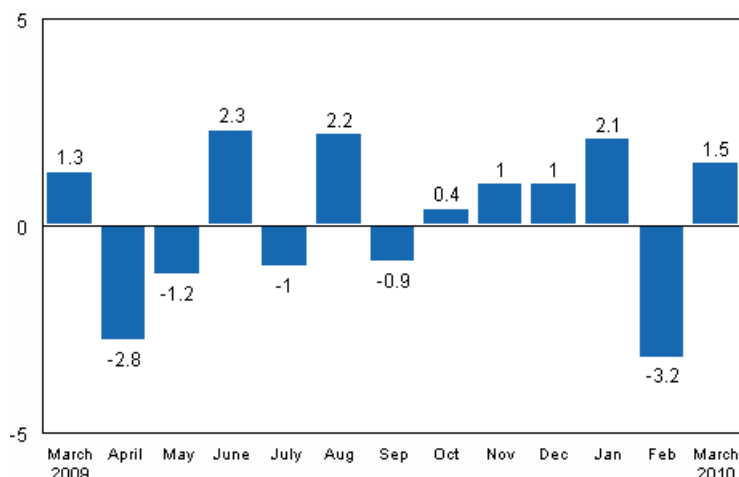
According to Statistics Finland, output of total industries adjusted for working days was 1.7 per cent higher in March 2010 than twelve months earlier. In February output was 0.8 per cent higher than one year earlier. In the first quarter of 2010 industrial output has grown by nearly four per cent from one year back.

**Working day adjusted change in industrial output (BCDE) from corresponding month previous year, %, TOL 2008**



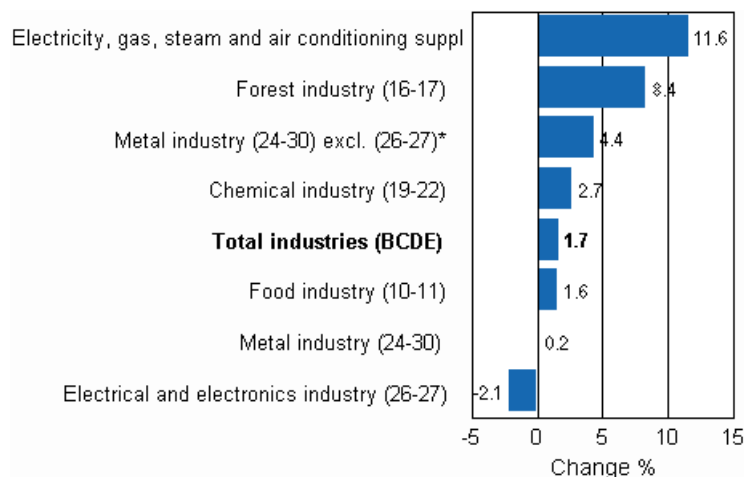
Seasonally adjusted output grew in March by 1.5 per cent compared with the previous month. In February output contracted by 3.2 per cent from January. In January output increased by good two per cent from December.

**Seasonally adjusted change in industrial output (BCDE) from previous month, %, TOL 2008**



Among industries the biggest growth was recorded in working day adjusted output in electricity, gas, steam and air conditioning supply, up by as much as 11.6 per cent. Despite the stoppages caused by the harbour strike, in the forest industry output adjusted for working days grew in March by 8.4 per cent from one year ago. The metal industry exclusive of the electrical and electronics industry grew year-on-year for the first time in nearly eighteen months. In March output in that industry went up by 4.4 per cent. Output in the chemical industry continued to grow and was in March nearly three per cent higher than one year ago. Output adjusted for working days fell most in the electrical and electronics industry, where output was 2.1 per cent lower than one year previously.

**Working day adjusted change in industrial output by industry 3/2009-3/2010, %, TOL 2008**



Capacity utilisation rate in manufacturing continued to rise in March. In March capacity utilisation rate was 74.3 per cent, or nearly four percentage points higher than one year before. In the forest industry capacity utilisation rate was 76.2 per cent, with a growth of around five percentage points from one year back. Capacity utilisation rate in the chemical industry has remained at good 82 per cent throughout the early part of the year.

**Estimation**

Statistics Finland has increased the use of estimation and around ten per cent of the index for March was estimated. About 24 per cent of the index for January and February was previously estimated. In Electrical and electronics industry (26-27) estimation has been used in the calculation of the index for January and February. Now the estimated data have been replaced and for this reason the data for January and February have become revised. In addition, the Tax Administration's payment control data are used to compile statistics on the output of enterprises with fewer than 50 employees. Enterprises with fewer than 50 employees account for around 13 per cent of total industries and these data cover nearly 70 per cent of the output of enterprises with fewer than 50 employees. These data are not at Statistics Finland's disposal by the release date of the volume index of industrial output. For this reason the data on these enterprises are estimated for the month the release relates to. The payment control data will be available when releasing data for the month for the second time, i.e. in the data for February. In this release the estimated values of the payment control data for January and February were replaced with the actual values. Further information: [Revisions to data of the volume index of industrial output, January-February 2010](#)

Revised data for March will be published on 10 June 2010 at 9 am in connection with the release of industrial output data for April. Because of the method used, seasonally adjusted figures for previous months may change even if the original figures do not become revised. The seasonally adjusted figures will also be adjusted for working days.

# Contents

Industrial output grew by 1.7 per cent in March .....	5
Figures	
Working day adjusted change percentage of industrial output March 2009 / March 2010, TOL 2008.....	7
Seasonally adjusted change percentage of industrial output February 2010 / March 2010, TOL 2008.....	7
Trend of industrial output Finland, Germany, Sweden, France and United Kingdom (BCD) 2000 - 2010, 2005=100, TOL 2008.....	8

## *Industrial output grew by 1.7 per cent in March*

According to Statistics Finland, output of total industries adjusted for working days was 1.7 per cent higher in March 2010 than twelve months earlier. In relation to February seasonally adjusted output grew by 1.5 per cent.

Output in mining and quarrying adjusted for working days went up by 7.6 per cent from one year ago.

Output in industry adjusted for working days exceeded the previous year's level by 1.2 per cent.

Manufacturing exclusive of the electrical and electronics industry went up year-on-year by 1.7 per cent in February and by 2.3 per cent in March after having contracted from one year earlier for 18 months in a row before February. A significant part of this growth comes from the forest and chemical industries.

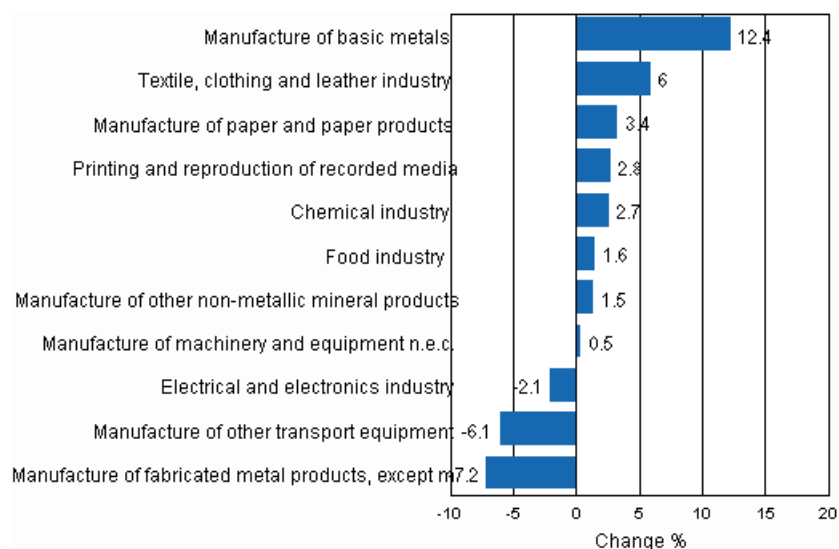
The metal industry exclusive of the electrical and electronics industry grew in March year-on-year by 4.4 per cent, while in February working day adjusted output still fell by 5.7 per cent. In the electrical and electronics industry output adjusted for working days grew by 43.2 per cent year-on-year in January but after that it has contracted in both February and March.

**Volume index of industrial output, value added, original, working day adjusted, seasonally adjusted change percentage**

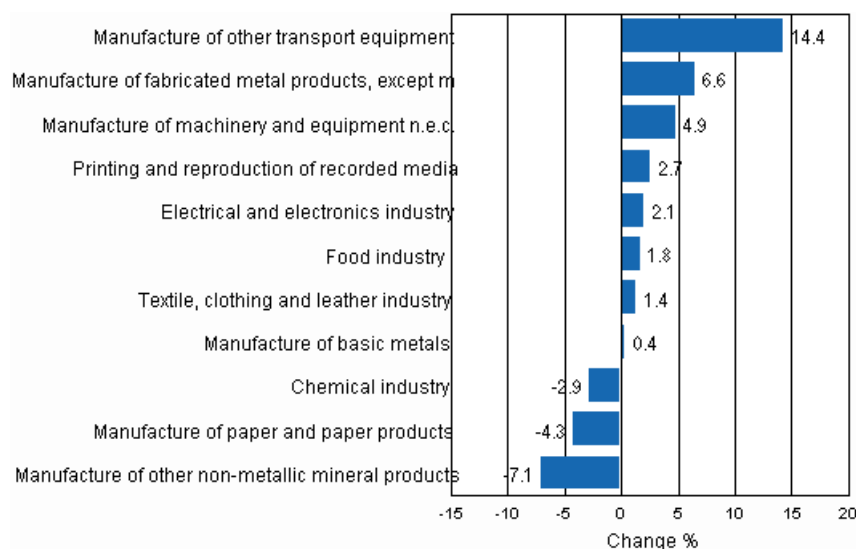
Industry (Tol 2008)	Value added share	Original change percentage, 2010 MAR / 2009 MAR	Working day adj. change percentage, 2010 MAR / 2009 MAR	Seasonal adj. change percentage, 2010 MAR / 2010 FEB
Total industries	100,0	2,8	1,7	1,5
B Mining and quarrying	1,3	-1,9	7,6	-10,7
C Manufacturing	86,1	1,6	1,2	1,6
10 Manufacture of food products	5,0	4,2	0,3	1,7
11 Manufacture of beverages	0,9	7,8	11,5	4,4
13 Manufacture of textiles	0,6	17,0	22,3	6,3
14 Manufacture of wearing apparel	0,4	-0,7	-1,6	-1,2
15 Manufacture of leather and related products	0,2	8,3	4,6	-10,3
16 Manufacture of wood and of products of wood and cork, except furniture; manufacture of articles of straw and plaiting materials	4,6	12,2	14,0	-1,9
17 Manufacture of paper and paper products	8,3	2,6	3,4	-4,3
18 Printing and reproduction of recorded media	1,8	1,1	2,8	2,7
23 Manufacture of other non-metallic mineral products	3,2	1,4	1,5	-7,1
24 Manufacture of basic metals	6,1	14,7	12,4	0,4
25 Manufacture of fabricated metal products, except machinery and equipment	7,8	-7,3	-7,2	6,6
28 Manufacture of machinery and equipment n.e.c.	9,7	1,7	0,5	4,9
29 Manufacture of motor vehicles, trailers and semi-trailers	1,2	-7,9	-8,6	-1,9
30 Manufacture of other transport equipment	1,2	-0,8	-1,0	22,5
31 Manufacture of furniture	1,2	-6,9	-7,8	-2,6
32 Other manufacturing	1,1	-18,3	-23,8	-4,3
33 Repair and installation of machinery and equipment	3,0	-4,8	-2,2	2,7
D Electricity, gas, steam and air conditioning supply	11,6	11,8	11,6	-2,6
E Water supply; sewerage, waste management and remediation activities	1,1	2,2	2,3	1,3
36 Water collection, treatment and supply	0,8	2,2	2,5	2,2
Main industrial groupings:				
Raw materials and productive goods	38,6	3,0	5,2	-0,6
Investment goods	34,2	-0,4	-1,8	5,5
Durable goods	1,5	-8,3	-8,1	-2,2
Other consumer goods	10,5	3,9	1,2	3,3
Special indices:				
10-11 Food industry	5,9	4,7	1,6	1,8
13-15 Textile, clothing and leather industry	1,3	9,7	6,0	1,4
16-17 Forest industry	12,8	6,1	8,4	-3,1
19-22 Chemical industry	10,6	0,5	2,7	-2,9
24-30 Metal industry	45,1	1,3	0,2	4,5
26-27 Electrical and electronics industry	19,2	1,0	-2,1	2,1
25,28-30,33 Machinery and metal product industry	22,8	-2,9	-3,3	14,6
29-30 Manufacture of transport equipment	2,4	-4,7	-6,1	14,4

# Figures

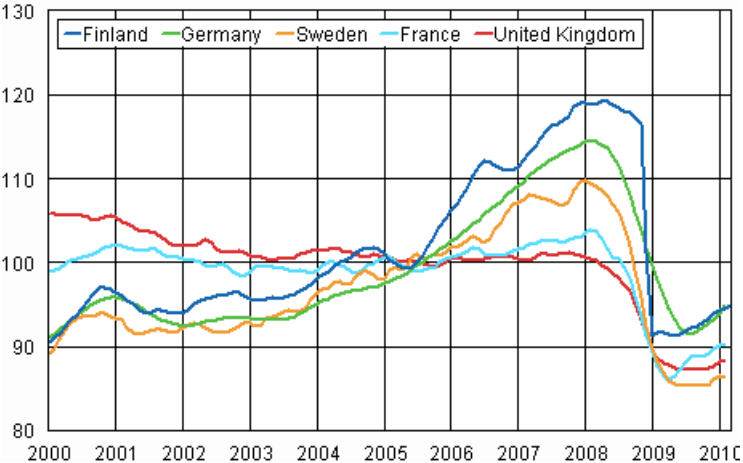
**Working day adjusted change percentage of industrial output March 2009 / March 2010, TOL 2008**



**Seasonally adjusted change percentage of industrial output February 2010 / March 2010, TOL 2008**



**Trend of industrial output Finland, Germany, Sweden, France and United Kingdom (BCD) 2000 - 2010, 2005=100, TOL 2008**





---

Suomen virallinen tilasto  
Finlands officiella statistik  
Official Statistics of Finland

Industry 2010

### Inquiries

Aki Savolainen (09) 1734 2703

Kari Rautio (09) 1734 2479

Director in charge:

Hannele Orjala

[volyyimi.indeksi@stat.fi](mailto:volyyimi.indeksi@stat.fi)

[www.stat.fi](http://www.stat.fi)