

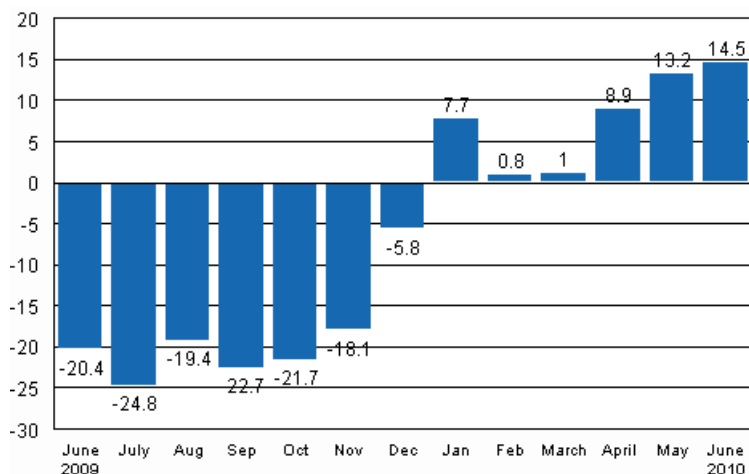
# Volume index of industrial output

2010, June

## Strong growth of industrial output continued in June

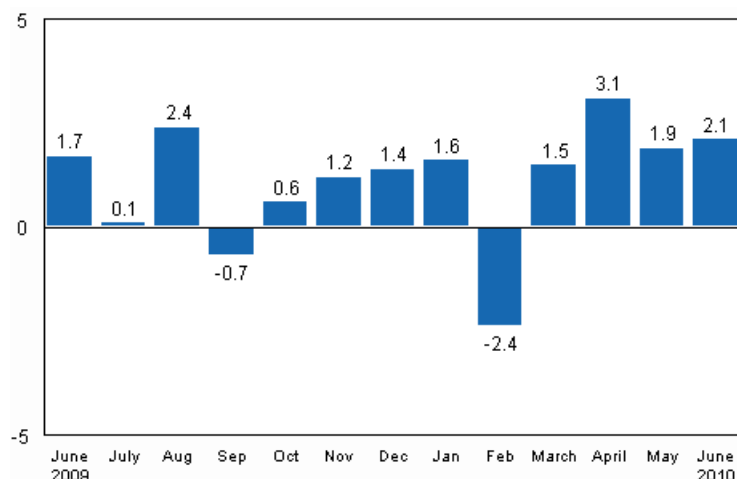
According to Statistics Finland, output of total industries adjusted for working days was 14.5 per cent higher in June 2010 than twelve months earlier. In May output was 13.2 per cent higher than one year earlier. In January to June 2010 industrial output has grown by 7.8 per cent from one year back.

**Working day adjusted change in industrial output (BCDE) from corresponding month previous year, %, TOL 2008**



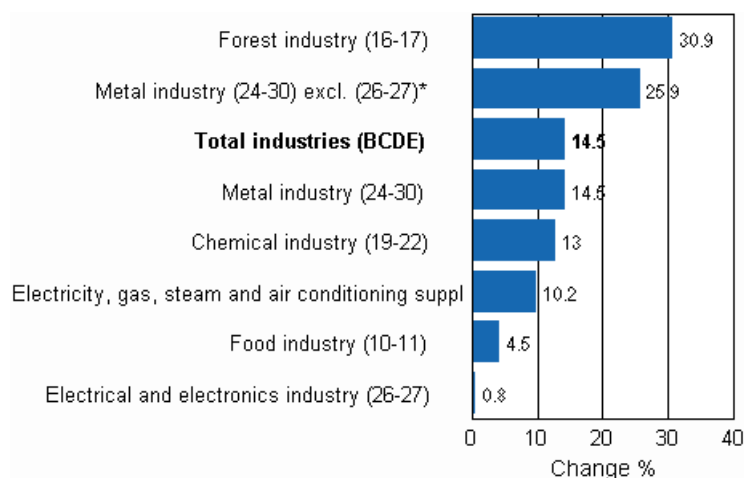
Apart from a downswing in February, seasonally adjusted output has been rising since last year's October. In June, seasonally adjusted output went up by 2.1 per cent from the previous month. In May output increased by 1.9 per cent from April. In April seasonally adjusted output went up by 3.1 per cent from March.

**Seasonally adjusted change in industrial output (BCDE) from previous month, %, TOL 2008**



All the main industries grew in June. Output rose most in the forest industry, by nearly 31 per cent. Output in the metal industry (excl. electrical and electronics industry) grew by almost 26 per cent. In the chemical industry, working day adjusted output went up by 13 per cent in June. In the food industry output also rose by 4.5 per cent, while in May its output still fell by good two per cent.

**Working day adjusted change in industrial output by industry 6/2009-6/2010, %, TOL 2008**



Capacity utilisation rate in manufacturing continued to rise. In June it was 78 per cent, or 13.8 percentage points higher than twelve months earlier. In the forest industry capacity utilisation rate was 83 per cent, and had risen by good 24 percentage points from one year back. In the metal industry capacity utilisation was 74 per cent in June, or 14 percentage points higher than one year earlier.

**Estimation**

Statistics Finland has increased the use of estimation. The Tax Administration's value added tax data are used to compile statistics on the output of enterprises with fewer than 50 employees. Enterprises with fewer than 50 employees account for around 13 per cent of industrial output and these data cover nearly 70 per cent of the production of enterprises with fewer than 50 employees. These data are not at Statistics Finland's disposal by the release date of the volume index of industrial output. For this reason the data on these enterprises are estimated for the month the release relates to, i.e. in this case June. The Tax

Administration's payment control data will be available when releasing data for the month for the second time, i.e. in the data for May.

Revised data for June 2010 will be published at 9 am on 10 September 2010 in connection with the release of industrial output data for July 2010. Because of the method used, seasonally adjusted figures for previous months may change even if the original figures do not become revised. The seasonally adjusted figures are also adjusted for working days.

# Contents

Industrial output grew by 14.5 per cent in June .....	5
-------------------------------------------------------	---

## Tables

Table 1. Volume index of industrial output, value added, original, working day adjusted, seasonally adjusted change percentage.....	6
-------------------------------------------------------------------------------------------------------------------------------------	---

## Figures

### Appendix figures

Appendix figure 1. Working day adjusted change percentage of industrial output June 2009 /June 2010, TOL 2008.....	7
Appendix figure 2. Seasonally adjusted change percentage of industrial output May 2010 /June 2010, TOL 2008...7	
Appendix figure 3. Trend of industrial output Finland, Germany, Sweden, France and United Kingdom (BCD) 2000 - 2010, 2005=100, TOL 2008.....	8

## ***Industrial output grew by 14.5 per cent in June***

According to Statistics Finland, output of total industries adjusted for working days was 14.5 per cent higher in June 2010 than twelve months earlier. In June, seasonally adjusted output went up by 2.1 per cent relative to the previous month.

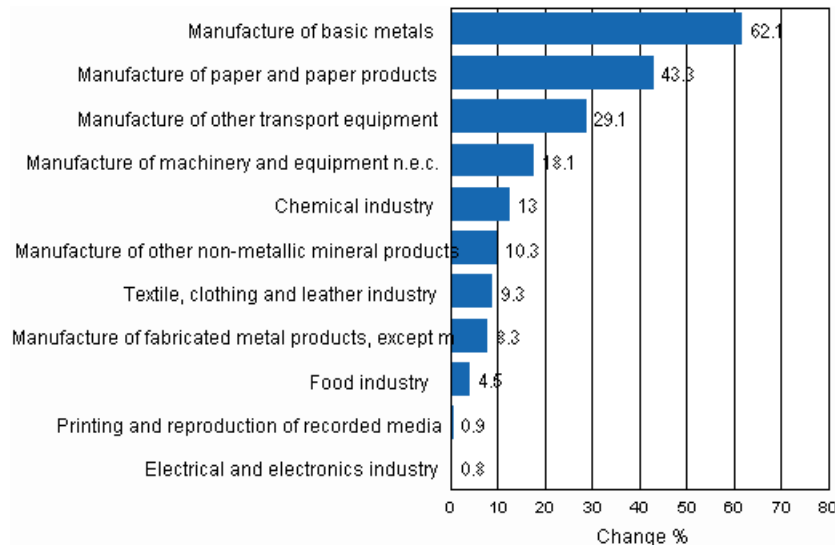
Adjusted for working days, industrial output grew by 14 per cent from one year back in June. In the manufacture of basic metals output went up by as much as 62.1 per cent in June. Output in the manufacture of paper products grew by 43.3 per cent from twelve months back. Output of sawn timber adjusted for working days was in June 16.5 per cent up year-on-year. In the manufacture of transport equipment, output went up by good 29 per cent in June. Output decreased most, or by 8.6 per cent in the manufacture of furniture.

**Table 1. Volume index of industrial output, value added, original, working day adjusted, seasonally adjusted change percentage**

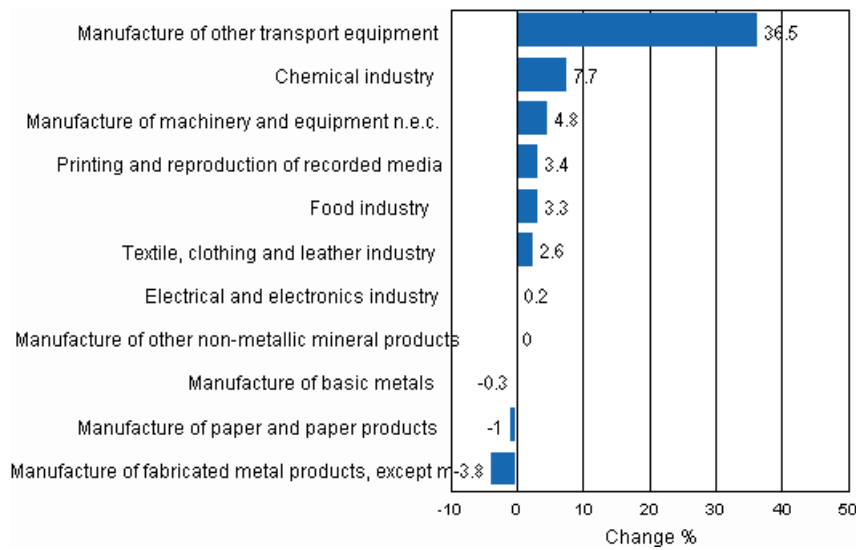
	Value added share	Original change percentage, 2010 JUN / 2009 JUN	Working day adj. change percentage, 2010 JUN / 2009 JUN	Seasonal adj. change percentage, 2010 JUN / 2010 MAY
Industry (Tol 2008)				
Total industries	100,0	14,5	14,5	2,1
B Mining and quarrying	1,3	26,9	29,7	17,1
C Manufacturing	86,1	14,8	14,0	2,1
10 Manufacture of food products	5,0	3,9	3,9	2,1
11 Manufacture of beverages	0,9	7,1	7,1	14,1
13 Manufacture of textiles	0,6	1,2	1,2	1,6
14 Manufacture of wearing apparel	0,4	18,5	18,5	2,8
15 Manufacture of leather and related products	0,2	23,1	22,0	9,1
16 Manufacture of wood and of products of wood and cork, except furniture; manufacture of articles of straw and plaiting materials	4,6	16,9	16,5	2,9
17 Manufacture of paper and paper products	8,3	43,0	43,3	-1,0
18 Printing and reproduction of recorded media	1,8	1,9	0,9	3,4
23 Manufacture of other non-metallic mineral products	3,2	10,4	10,3	0,0
24 Manufacture of basic metals	6,1	62,8	62,1	-0,3
25 Manufacture of fabricated metal products, except machinery and equipment	7,8	9,5	8,3	-3,8
28 Manufacture of machinery and equipment n.e.c.	9,7	18,1	18,1	4,8
29 Manufacture of motor vehicles, trailers and semi-trailers	1,2	-4,8	-4,5	-15,5
30 Manufacture of other transport equipment	1,2	66,8	67,5	101,2
31 Manufacture of furniture	1,2	-8,3	-8,6	-3,4
32 Other manufacturing	1,1	5,2	5,2	-1,4
33 Repair and installation of machinery and equipment	3,0	-6,0	-6,0	-7,6
D Electricity, gas, steam and air conditioning supply	11,6	10,2	10,2	-4,7
E Water supply; sewerage, waste management and remediation activities	1,1	2,4	2,4	0,6
36 Water collection, treatment and supply	0,8	2,4	2,4	0,4
Main industrial groupings:				
Raw materials and productive goods	38,6	26,4	26,4	2,8
Investment goods	34,2	8,2	8,2	2,9
Durable goods	1,5	-9,3	-11,1	-2,9
Other consumer goods	10,5	5,3	5,1	4,8
Special indices:				
10-11 Food industry	5,9	4,5	4,5	3,3
13-15 Textile, clothing and leather industry	1,3	9,9	9,3	2,6
16-17 Forest industry	12,8	30,8	30,9	2,1
19-22 Chemical industry	10,6	13,0	13,0	7,7
24-30 Metal industry	45,1	15,7	14,5	1,9
26-27 Electrical and electronics industry	19,2	2,3	0,8	0,2
25,28-30,33 Machinery and metal product industry	22,8	13,3	12,5	0,6
29-30 Manufacture of transport equipment	2,4	29,1	29,1	36,5

## Appendix figures

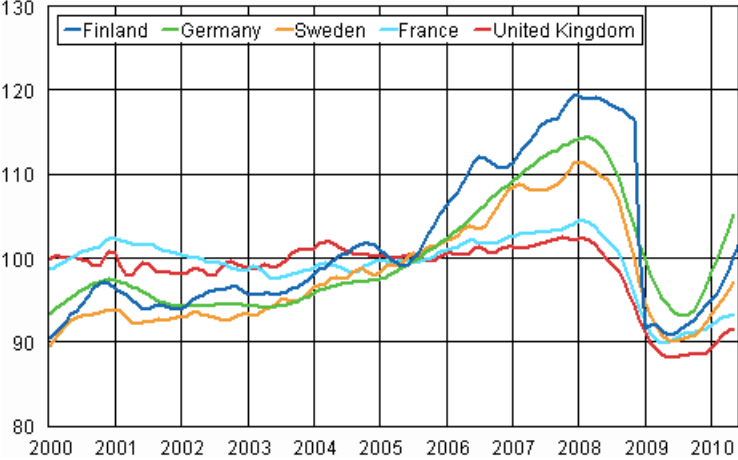
**Appendix figure 1. Working day adjusted change percentage of industrial output June 2009 /June 2010, TOL 2008**



**Appendix figure 2. Seasonally adjusted change percentage of industrial output May 2010 /June 2010, TOL 2008**



**Appendix figure 3. Trend of industrial output Finland, Germany, Sweden, France and United Kingdom (BCD) 2000 - 2010, 2005=100, TOL 2008**





### Inquiries

Kari Rautio (09) 1734 2479  
Jukka Appelqvist (09) 1734 3391  
Director in charge:  
Hannele Orjala  
volyyymi.indeksi@stat.fi  
www.stat.fi