

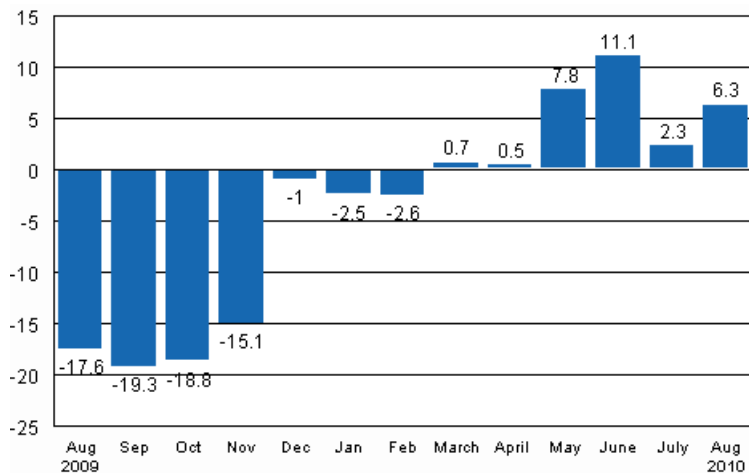
Volume index of industrial output

2010, August

Industrial output went up in August

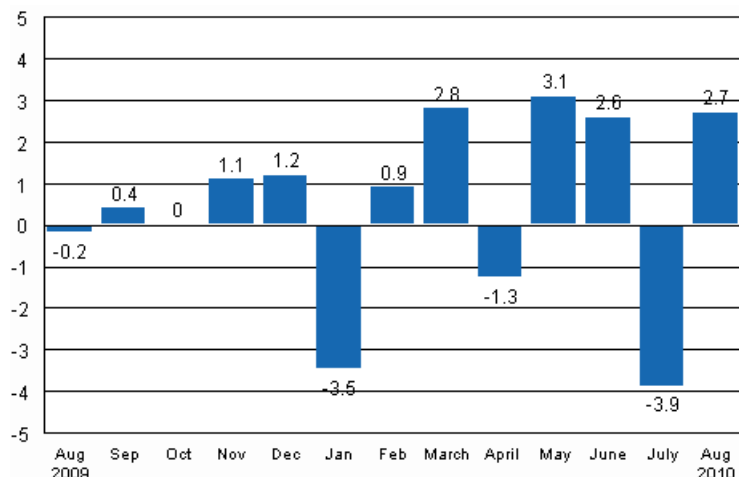
According to Statistics Finland, output of total industries adjusted for working days was 6.3 per cent higher in August 2010 than twelve months earlier. In July output was 2.3 per cent higher than one year earlier.

Working day adjusted change in industrial output (BCDE) from corresponding month previous year, %, TOL 2008



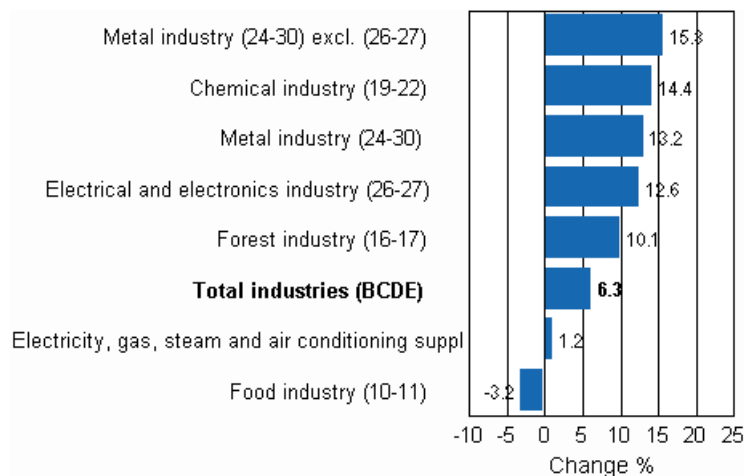
In August, seasonally adjusted output went up by 2.7 per cent from the previous month. In July, output decreased by 3.9 per cent from the previous month. In June, seasonally adjusted output grew by 2.6 per cent from May. In May, seasonally adjusted output increased by 3.1 per cent from April.

Seasonally adjusted change in industrial output (BCDE) from previous month, %, TOL 2008



Most of the main industries showed growth in August. The biggest increase of 15.8 per cent was recorded in the output of the metal industry (excl. manufacture of electrical and electronic products). In the chemical industry, output went up by 14.4 per cent in August and in the metal industry it grew by 13.2 per cent. Output in the electrical and electronics industry went up by 12.6 per cent. In the food industry output fell by 3.2 per cent in August.

Working day adjusted change in industrial output by industry 8/2009-8/2010, %, TOL 2008



In August, capacity utilisation rate in manufacturing was 75.8 per cent, or 8.1 percentage points higher than one year earlier. In the forest industry capacity utilisation rate was 82.8 per cent in August, and had risen by 11 percentage points from one year back. In the metal industry capacity utilisation rate was 72.3 per cent in August, or 9 percentage points higher than one year earlier.

Estimation

Statistics Finland has increased the use of estimation and around ten per cent of the index for August was estimated. In the electrical and electronics industry (26-27) estimation was used in the calculation of the August index. The Tax Administration’s payment control data are used to compile statistics on the output of enterprises with fewer than 50 employees. Enterprises with fewer than 50 employees account for around 13 per cent of industrial output and these data cover nearly 70 per cent of the production of enterprises

with fewer than 50 employees. These data are not at Statistics Finland's disposal by the release date of the volume index of industrial output. For this reason the data on these enterprises are estimated for the month the release relates to, i.e. in this case August. The payment control data will be available when releasing data for the month for the second time, i.e. in the data for July. Revised data for August 2010 will be published at 9 am on 10 November 2010 in connection with the release of industrial output data for September 2010. Because of the method used, seasonally adjusted figures for previous months may change even if the original figures do not become revised. The seasonally adjusted figures will also be adjusted for working days.

Final index and value added weights for 2009

Statistics Finland will release the final annual volume indices for 2009 in connection with the index for August. The preliminary monthly volume index is based on a sample. The final annual volume index is calculated from the regional and industrial statistics on manufacturing compiled from structural statistics on manufacturing. In the same connection the establishment and industry-specific weights are changed to correspond to the situation in 2009. The changes will have an effect on the data concerning 2009 and the early part of 2010.

Contents

| | |
|---|---|
| Industrial output grew by 6.3 per cent in August..... | 5 |
|---|---|

Tables

| | |
|---|---|
| Table 1. Volume index of industrial output, value added, original, working day adjusted, seasonally adjusted change percentage..... | 6 |
|---|---|

Figures

Appendix figures

| | |
|--|---|
| Appendix figure 1. Working day adjusted change percentage of industrial output August 2009 / August 2010, TOL 2008..... | 7 |
| Appendix figure 2. Seasonally adjusted change percentage of industrial output July 2010 /August 2010, TOL 2008..... | 7 |
| Appendix figure 3. Trend of industrial output Finland, Germany, Sweden, France and United Kingdom (BCD) 2000 - 2010, 2005=100, TOL 2008..... | 8 |

Industrial output grew by 6.3 per cent in August

According to Statistics Finland, output of total industries adjusted for working days was 6.3 per cent higher in August 2010 than twelve months earlier. In August, seasonally adjusted output went up by 2.7 per cent relative to the previous month.

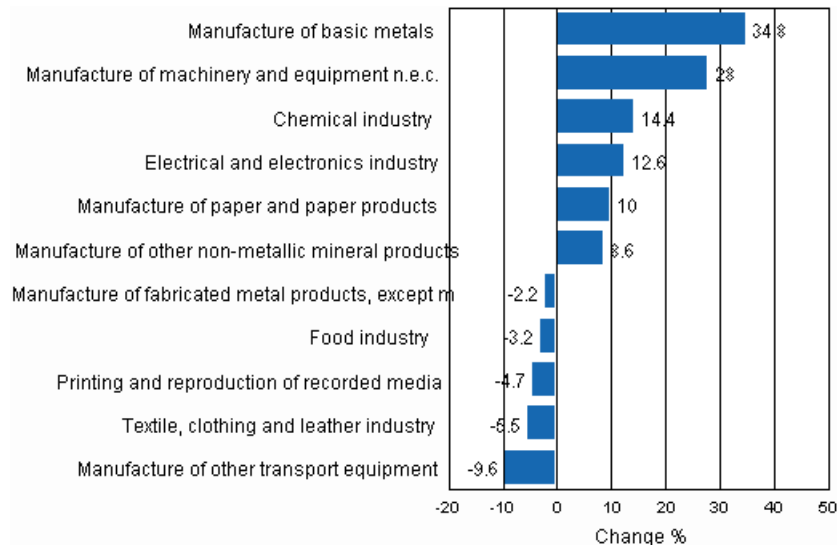
Adjusted for working days, industrial output grew by 7.9 per cent from one year back in August. In the manufacture of basic metals, output went up by 34.8 per cent in August. Output in the manufacture of paper products grew by 10.0 per cent from twelve months back. Adjusted for working days, output of sawn timber was 9.8 per cent up year-on-year in August. The largest drop of good 28 per cent was recorded in the output of mining and quarrying.

Table 1. Volume index of industrial output, value added, original, working day adjusted, seasonally adjusted change percentage

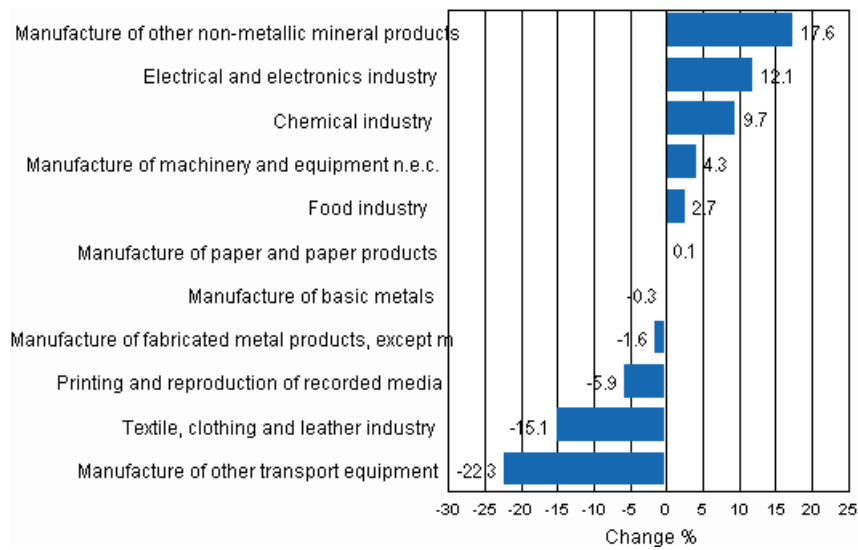
| | Value added share | Original change percentage, 2010 AUG / 2009 AUG | Working day adj. change percentage, 2010 AUG / 2009 AUG | Seasonal adj. change percentage, 2010 AUG / 2010 JUL |
|--|-------------------|---|---|--|
| Industry (Tot 2008) | | | | |
| Total industries | 100,0 | 8,4 | 6,3 | 2,7 |
| B Mining and quarrying | 1,6 | -22,6 | -28,4 | -21,7 |
| C Manufacturing | 83,6 | 10,5 | 7,9 | 5,3 |
| 10 Manufacture of food products | 7,4 | -3,4 | -5,6 | 2,2 |
| 11 Manufacture of beverages | 1,3 | 12,7 | 12,7 | -0,2 |
| 13 Manufacture of textiles | 0,7 | 6,2 | 6,2 | -4,9 |
| 14 Manufacture of wearing apparel | 0,4 | -15,7 | -18,2 | -6,2 |
| 15 Manufacture of leather and related products | 0,2 | 18,3 | 13,8 | 3,7 |
| 16 Manufacture of wood and of products of wood and cork, except furniture; manufacture of articles of straw and plaiting materials | 3,3 | 13,5 | 9,8 | -1,0 |
| 17 Manufacture of paper and paper products | 7,5 | 9,6 | 10,0 | 0,1 |
| 18 Printing and reproduction of recorded media | 2,2 | -1,7 | -4,7 | -5,9 |
| 23 Manufacture of other non-metallic mineral products | 3,0 | 11,2 | 8,6 | 17,6 |
| 24 Manufacture of basic metals | 2,1 | 40,6 | 34,8 | -0,3 |
| 25 Manufacture of fabricated metal products, except machinery and equipment | 8,6 | 0,0 | -2,2 | -1,6 |
| 28 Manufacture of machinery and equipment n.e.c. | 11,3 | 31,0 | 28,0 | 4,3 |
| 29 Manufacture of motor vehicles, trailers and semi-trailers | 1,1 | 19,4 | 12,3 | -12,6 |
| 30 Manufacture of other transport equipment | 1,4 | -25,4 | -27,8 | -11,8 |
| 31 Manufacture of furniture | 1,3 | 2,5 | -1,6 | -1,7 |
| 32 Other manufacturing | 0,9 | -20,8 | -22,9 | -10,8 |
| 33 Repair and installation of machinery and equipment | 3,9 | -8,4 | -9,2 | 3,3 |
| D Electricity, gas, steam and air conditioning supply | 12,4 | 1,3 | 1,2 | -7,1 |
| E Water supply; sewerage, waste management and remediation activities | 2,3 | 6,1 | 4,8 | -0,2 |
| 36 Water collection, treatment and supply | 0,7 | 4,6 | 4,0 | -2,6 |
| Main industrial groupings: | | | | |
| Raw materials and productive goods | 34,6 | 10,5 | 10,5 | -1,2 |
| Investment goods | 31,1 | 11,2 | 8,5 | 8,0 |
| Durable goods | 1,7 | -2,1 | -5,6 | -4,2 |
| Other consumer goods | 14,9 | 4,5 | 0,9 | 1,4 |
| Special indices: | | | | |
| 10-11 Food industry | 8,7 | -1,1 | -3,2 | 2,7 |
| 13-15 Textile, clothing and leather industry | 1,3 | 1,4 | -5,5 | -15,1 |
| 16-17 Forest industry | 10,7 | 10,7 | 10,1 | -0,3 |
| 19-22 Chemical industry | 13,1 | 14,4 | 14,4 | 9,7 |
| 24-30 Metal industry | 38,5 | 16,2 | 13,2 | 7,4 |
| 26-27 Electrical and electronics industry | 13,9 | 16,8 | 12,6 | 12,1 |
| 25,28-30,33 Machinery and metal product industry | 26,2 | 9,9 | 7,1 | 5,3 |
| 29-30 Manufacture of transport equipment | 2,5 | -6,1 | -9,6 | -22,3 |

Appendix figures

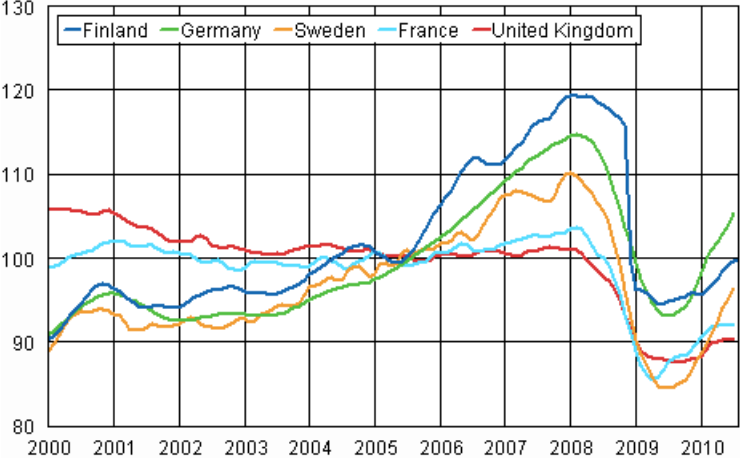
Appendix figure 1. Working day adjusted change percentage of industrial output August 2009 / August 2010, TOL 2008



Appendix figure 2. Seasonally adjusted change percentage of industrial output July 2010 / August 2010, TOL 2008



Appendix figure 3. Trend of industrial output Finland, Germany, Sweden, France and United Kingdom (BCD) 2000 - 2010, 2005=100, TOL 2008



Suomen virallinen tilasto
Finlands officiella statistik
Official Statistics of Finland

Industry 2010

Inquiries

Kari Rautio (09) 1734 2479
Jukka Appelqvist (09) 1734 3391
Director in charge:
Hannele Orjala
volyyymi.indeksi@stat.fi
www.stat.fi