

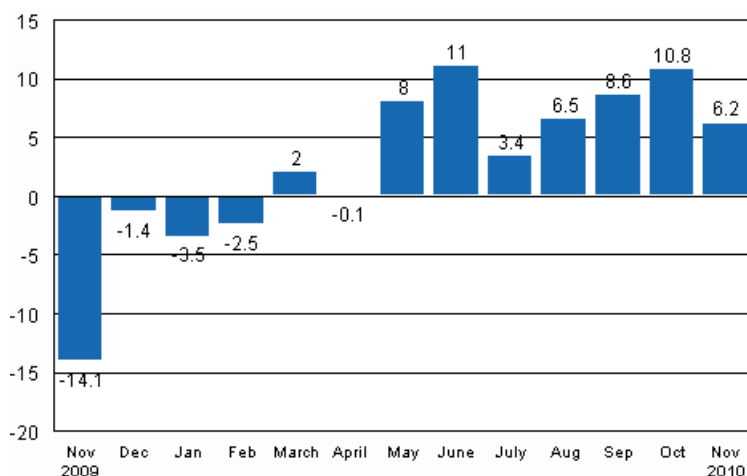
Volume index of industrial output

2010, November

Industrial output grew by 6.2 per cent in November

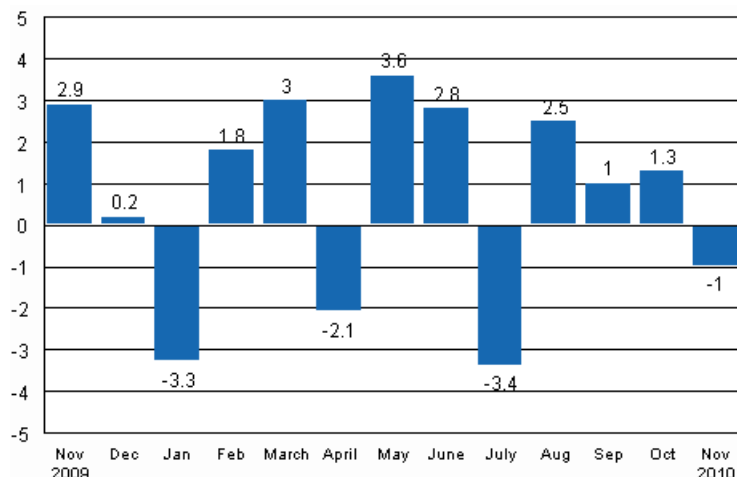
According to Statistics Finland, output of total industries adjusted for working days was 6.2 per cent higher in November 2010 than twelve months earlier. In October, output was 10.8 per cent higher than one year earlier. In the January to November period, industrial output increased by 5.4 per cent from twelve months back.

Working day adjusted change in industrial output (BCDE) from corresponding month previous year, %, TOL 2008



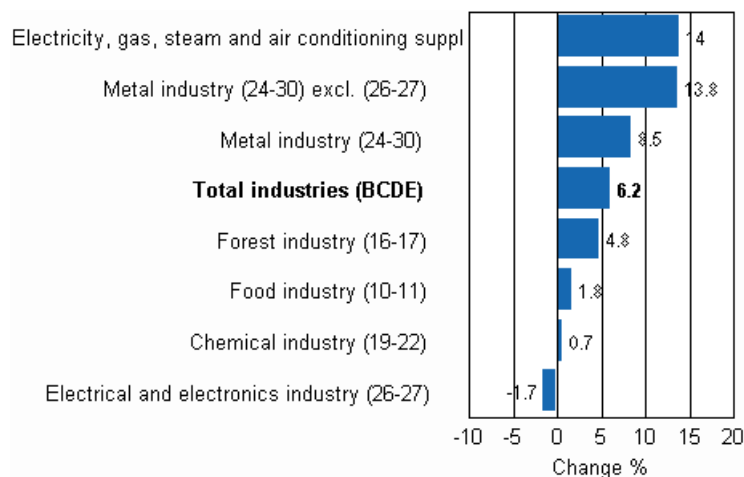
In November, seasonally adjusted output decreased by one per cent from the previous month. In October, output increased by 1.3 per cent from the previous month. In September, seasonally adjusted output went up by one per cent from August.

Seasonally adjusted change in industrial output (BCDE) from previous month, %, TOL 2008



Output went up in most main industries in November. The biggest increase in output was recorded in the energy industry. Its output grew by 14 per cent from twelve months back. Output in the metal industry (excl. electrical and electronics industry) went up by 13.8 per cent. In the forest industry, output grew by just under 5 per cent from one year ago. In the food industry, output grew by 1.8 per cent and in the chemical industry by just under one per cent in November. Output in the electrical and electronics industry decreased by 1.7 per cent.

Working day adjusted change in industrial output by industry 11/2009-11/2010, %, TOL 2008



Capacity utilisation rate in manufacturing was 78.3 per cent in November, or 6.4 percentage points higher than one year earlier. In the forest industry, capacity utilisation rate was 84.4 per cent in November, and had risen by 8.1 percentage points from one year back. In the metal industry, capacity utilisation rate was 75.2 per cent in November, or 5.4 percentage points higher than one year earlier.

Estimation

Statistics Finland has increased the use of estimation and around ten per cent of the index for November was estimated. In the electrical and electronics industry (26-27), estimation was used in the calculation of the November index. The Tax Administration’s payment control data are used to compile statistics on the output of enterprises with fewer than 50 employees. Enterprises with fewer than 50 employees account

for around 13 per cent of industrial output and these data cover nearly 70 per cent of the production of enterprises with fewer than 50 employees. These data are not at Statistics Finland's disposal by the release date of the volume index of industrial output. For this reason the data on these enterprises are estimated for the month the release relates to, i.e. in this case November. The payment control data will be available when releasing data for the month for the second time, i.e. in the data for October.

Revised data for November 2010 will be published at 9 am on 10 February 2011 in connection with the industrial output data for December 2010. Because of the method used, seasonally adjusted figures for previous months may change even if the original figures do not become revised. The seasonally adjusted figures will also be adjusted for working days

Contents

Industrial output grew by 6.2 per cent in November.....	5
---	---

Tables

Table 1. Volume index of industrial output, value added, original, working day adjusted, seasonally adjusted change percentage.....	6
---	---

Figures

Appendix figures

Appendix figure 1. Working day adjusted change percentage of industrial output November 2009 /November 2010, TOL 2008.....	7
Appendix figure 2. Seasonally adjusted change percentage of industrial output October 2010 /November 2010, TOL 2008.....	7
Appendix figure 3. Trend of industrial output Finland, Germany, Sweden, France and United Kingdom (BCD) 2000 - 2010, 2005=100, TOL 2008.....	8

Industrial output grew by 6.2 per cent in November

According to Statistics Finland, output of total industries adjusted for working days was 6.2 per cent higher in November than twelve months earlier. In November, seasonally adjusted output decreased by one per cent relative to October.

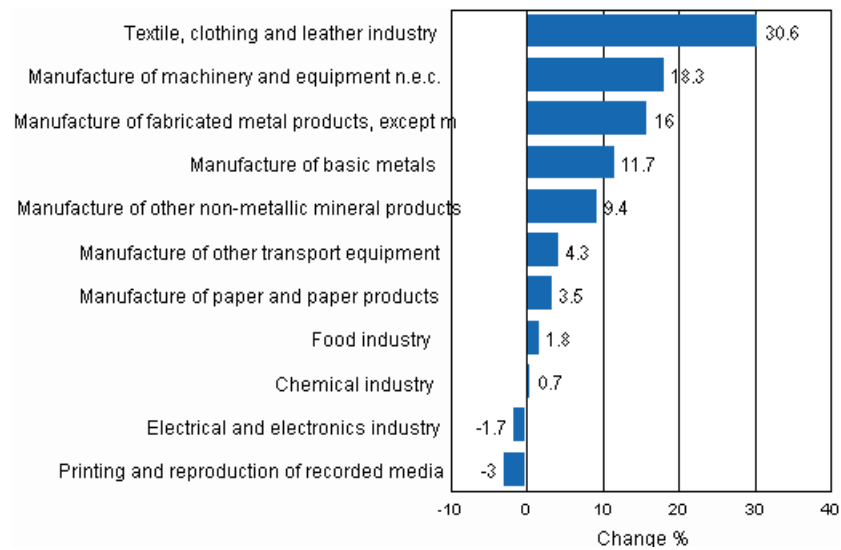
Adjusted for working days, industrial output grew by 5.2 per cent from one year back in November. The biggest output increase of nearly 31 per cent was recorded in the textile, clothing and leather industry. The manufacture of metal products increased by 16 per cent. The manufacture of other machinery and equipment went up by good 18 per cent. Output of sawn timber adjusted for working days was 5 per cent up year-on-year in November. The manufacture of paper products increased by 3.5 per cent. Output decreased most, or by 6.3 per cent, in the manufacture of other transport equipment.

Table 1. Volume index of industrial output, value added, original, working day adjusted, seasonally adjusted change percentage

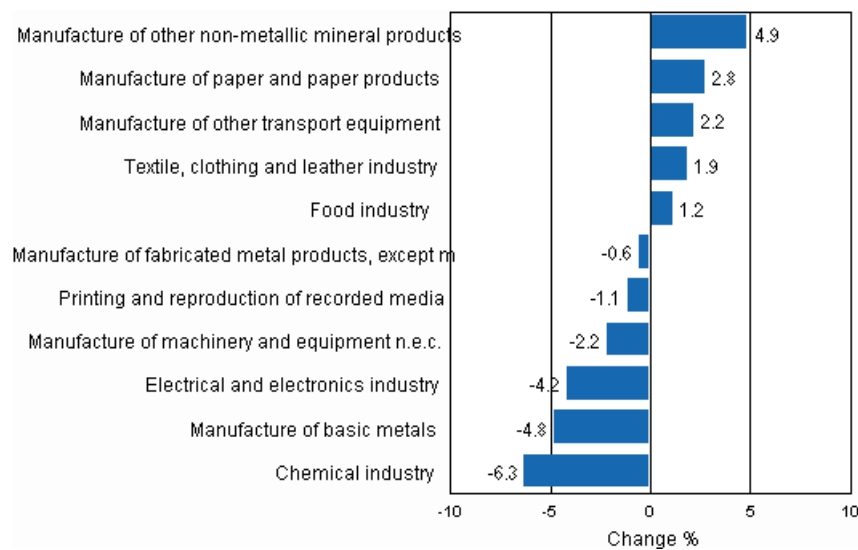
	Value added share	Original change percentage, 2010 NOV / 2009 NOV	Working day adj. change percentage, 2010 NOV / 2009 NOV	Seasonal adj. change percentage, 2010 NOV / 2010 OCT
Industry (Tol 2008)				
Total industries	100,0	9,1	6,2	-1,0
B Mining and quarrying	1,6	24,3	22,4	22,9
C Manufacturing	83,6	8,2	5,2	-1,4
10 Manufacture of food products	7,4	4,4	0,2	0,8
11 Manufacture of beverages	1,3	17,1	17,1	3,1
13 Manufacture of textiles	0,7	31,5	31,5	2,0
14 Manufacture of wearing apparel	0,4	26,4	22,6	0,3
15 Manufacture of leather and related products	0,2	34,9	34,9	-4,9
16 Manufacture of wood and of products of wood and cork, except furniture; manufacture of articles of straw and plaiting materials	3,3	10,5	5,0	2,5
17 Manufacture of paper and paper products	7,5	3,1	3,5	2,8
18 Printing and reproduction of recorded media	2,2	-1,7	-3,0	-1,1
23 Manufacture of other non-metallic mineral products	3,0	12,7	9,4	4,9
24 Manufacture of basic metals	2,1	13,1	11,7	-4,8
25 Manufacture of fabricated metal products, except machinery and equipment	8,6	16,0	16,0	-0,6
28 Manufacture of machinery and equipment n.e.c.	11,3	20,4	18,3	-2,2
29 Manufacture of motor vehicles, trailers and semi-trailers	1,1	15,8	10,9	-0,8
30 Manufacture of other transport equipment	1,4	-6,3	-6,3	1,5
31 Manufacture of furniture	1,3	19,4	13,0	-0,4
32 Other manufacturing	0,9	4,9	4,9	-0,0
33 Repair and installation of machinery and equipment	3,9	5,1	4,2	3,4
D Electricity, gas, steam and air conditioning supply	12,4	14,1	14,0	3,4
E Water supply; sewerage, waste management and remediation activities	2,3	2,8	1,3	0,9
36 Water collection, treatment and supply	0,7	3,9	3,9	2,2
Main industrial groupings:				
Raw materials and productive goods	34,6	8,8	7,1	-0,8
Investment goods	31,1	9,5	6,8	-2,5
Durable goods	1,7	17,2	9,0	-3,1
Other consumer goods	14,9	5,4	2,2	-4,6
Special indices:				
10-11 Food industry	8,7	6,1	1,8	1,2
13-15 Textile, clothing and leather industry	1,3	30,6	30,6	1,9
16-17 Forest industry	10,7	5,3	4,8	3,1
19-22 Chemical industry	13,1	0,7	0,7	-6,3
24-30 Metal industry	38,5	11,7	8,5	-2,0
26-27 Electrical and electronics industry	13,9	3,2	-1,7	-4,2
25,28-30,33 Machinery and metal product industry	26,2	15,3	12,1	-2,2
29-30 Manufacture of transport equipment	2,5	4,3	4,3	2,2

Appendix figures

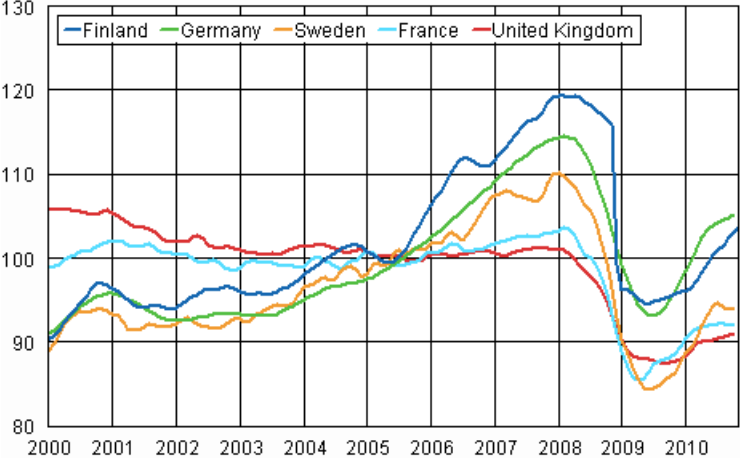
Appendix figure 1. Working day adjusted change percentage of industrial output November 2009 /November 2010, TOL 2008



Appendix figure 2. Seasonally adjusted change percentage of industrial output October 2010 /November 2010, TOL 2008



Appendix figure 3. Trend of industrial output Finland, Germany, Sweden, France and United Kingdom (BCD) 2000 - 2010, 2005=100, TOL 2008



Inquiries

Kari Rautio (09) 1734 2479

Director in charge:

Hannele Orjala

volyyimi.indeksi@stat.fi

www.stat.fi

Source: Volume Index of Industrial Output 2010, November. Statistics Finland