

# Volume index of industrial output

2011, January

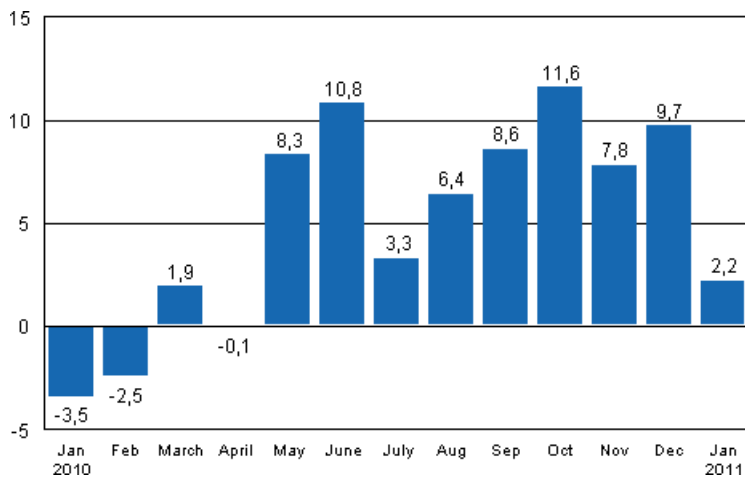
## Industrial output grew by 2.2 per cent in January

**Korrigerad 28.6.2011**

Nästan alla siffror har ändrats. [Mera information](#) om korrigeringen.

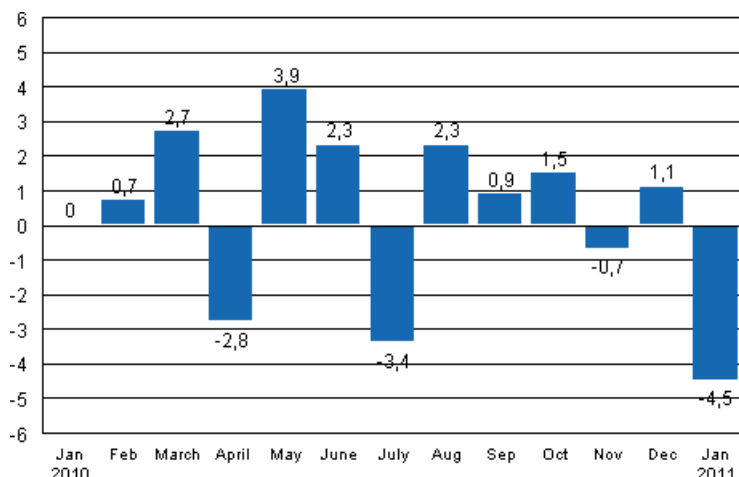
According to Statistics Finland, output of total industries adjusted for working days was 2.2 per cent higher in January 2011 than twelve months earlier. In December 2010 output was 9.7 per cent higher than in December 2009.

**Working day adjusted change in industrial output (BCDE) from corresponding month previous year, %, TOL 2008**



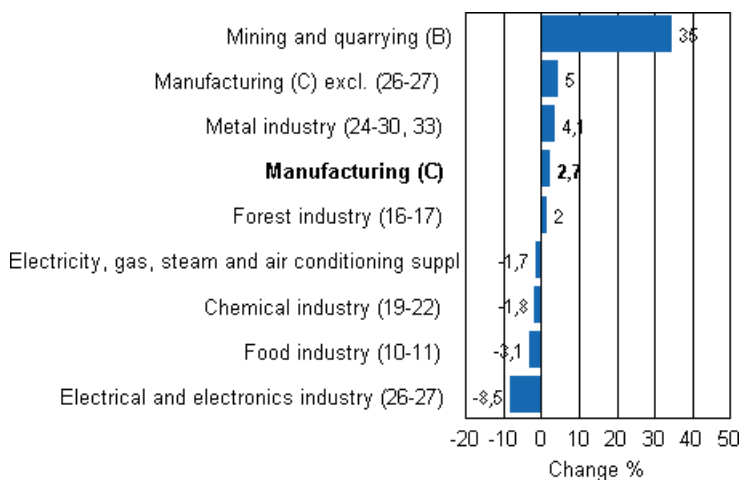
Seasonally adjusted output fell in January by 4.5 per cent compared with the previous month. In December output increased by 1.1 per cent from the previous month. In November seasonally adjusted output decreased slightly from October.

**Seasonally adjusted change in industrial output (BCDE) from previous month, %, TOL 2008**



Output went up in most main industries in January. Among the industries, the biggest growth was recorded in mining and quarrying, where output was as much as 35 per cent higher than in January 2010. The strong growth in mining has continued for several months. In the metal industry, output grew by 4.1 per cent from one year ago. Output in the electrical and electronics industry fell by 8.5 per cent. In the chemical industry, output fell by 1.8 per cent. In the forest industry, output increased by 2.0 per cent from one year ago. Output fell in electricity, gas, steam and air conditioning supply by 1.7 per cent.

**Working day adjusted change in industrial output by industry 1/2010-1/2011, %, TOL 2008**



Capacity utilisation rate in manufacturing was 79.3 per cent in January, or 8.3 percentage points higher than one year earlier. Capacity utilisation rate in the forest industry was 85.6 per cent in January, up by 9.4 percentage points from one year back. In the metal industry, capacity utilisation rate was 81.6 per cent in January, or 13.7 percentage points higher than one year earlier.

# Contents

Industrial output grew by 2.2 per cent in January .....	4
---	---

## Tables

Table 1. Volume index of industrial output, value added, original, working day adjusted, seasonally adjusted change percentage.....	5
---	---

## Figures

### Appendix figures

Appendix figure 1. Working day adjusted change percentage of industrial output January 2010 /January 2011, TOL 2008.....	6
--	---

Appendix figure 2. Seasonally adjusted change percentage of industrial output December 2010 /January 2010, TOL 2008.....	6
--	---

Appendix figure 3. Trend of industrial output Finland, Germany, Sweden, France and United Kingdom (BCD) 2000 - 2011, 2005=100, TOL 2008.....	7
--	---

## ***Industrial output grew by 2.2 per cent in January***

According to Statistics Finland, output of total industries (BCDE) adjusted for working days was 2.2 per cent higher in January than twelve months earlier. Seasonally adjusted output fell in January by 4.5 per cent compared with the previous month.

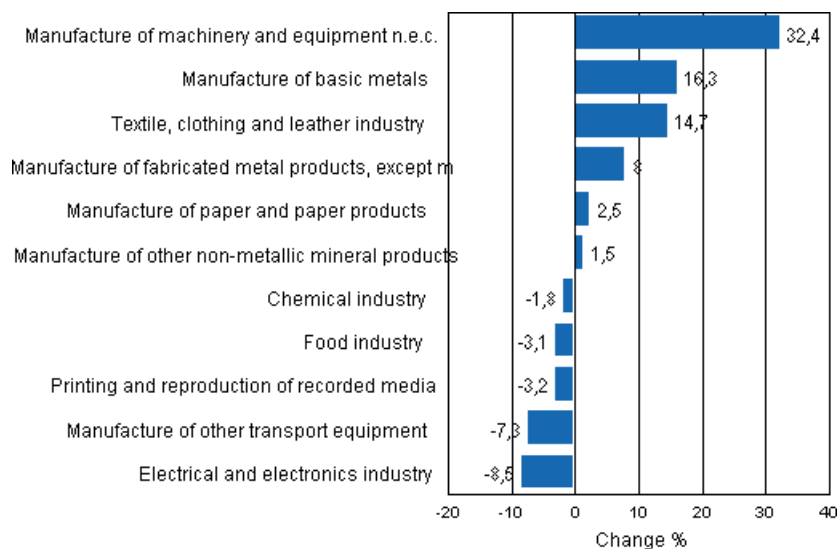
Adjusted for working days, industrial output (C) grew by 2.7 per cent in January from one year back. Mining and quarrying went up by as much as 35 per cent. The manufacture of other machinery and equipment grew by 32.4 per cent from one year back. The manufacture of basic metals grew by 16.3 per cent. Output fell by 22.8 per cent in the manufacture of other transport equipment.

**Table 1. Volume index of industrial output, value added, original, working day adjusted, seasonally adjusted change percentage**

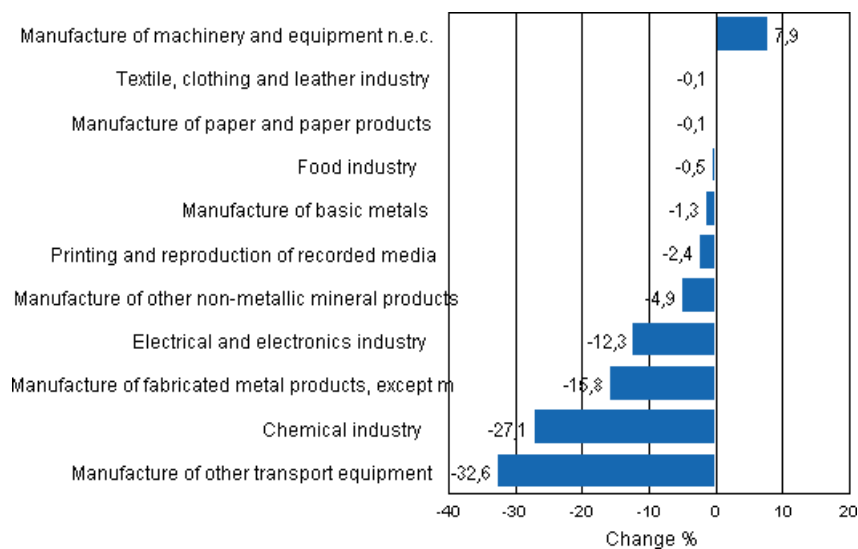
	Value added share	Original change percentage, 2011 JAN / 2010 JAN	Working day adj. change percentage, 2011 JAN / 2010 JAN	Seasonal adj. change percentage, 2011 JAN / 2010 DEC
Industry (Tol 2008)				
Total industries	100,0	3,4	2,2	-4,5
B Mining and quarrying	1,6	21,8	35,0	-27,1
C Manufacturing	83,6	4,3	2,7	-17,5
10 Manufacture of food products	7,4	-0,1	-2,7	-2,3
11 Manufacture of beverages	1,3	-3,3	-3,3	1,8
13 Manufacture of textiles	0,7	16,2	16,2	0,5
14 Manufacture of wearing apparel	0,4	11,0	7,6	-10,8
15 Manufacture of leather and related products	0,2	17,0	17,0	-7,1
16 Manufacture of wood and of products of wood and cork, except furniture; manufacture of articles of straw and plaiting materials	3,3	9,4	6,2	0,9
17 Manufacture of paper and paper products	7,5	0,3	2,5	-0,1
18 Printing and reproduction of recorded media	2,2	2,4	-3,2	-2,4
23 Manufacture of other non-metallic mineral products	3,0	6,0	1,5	-4,9
24 Manufacture of basic metals	2,1	19,6	16,3	-1,3
25 Manufacture of fabricated metal products, except machinery and equipment	8,6	8,0	8,0	-15,8
28 Manufacture of machinery and equipment n.e.c.	11,3	38,8	32,4	7,9
29 Manufacture of motor vehicles, trailers and semi-trailers	1,1	16,1	8,3	-7,9
30 Manufacture of other transport equipment	1,4	-22,8	-22,8	-8,2
31 Manufacture of furniture	1,3	15,5	8,1	-3,5
32 Other manufacturing	0,9	-4,5	-4,5	-3,0
33 Repair and installation of machinery and equipment	3,9	7,2	6,2	-4,6
D Electricity, gas, steam and air conditioning supply	12,4	-1,6	-1,7	-4,3
E Water supply; sewerage, waste management and remediation activities	2,3	3,9	3,7	-1,2
36 Water collection, treatment and supply	0,7	2,3	2,3	-1,1
Main industrial groupings:				
Raw materials and productive goods	34,6	6,8	7,7	-3,0
Investment goods	31,1	3,1	0,6	-10,5
Durable goods	1,7	26,5	20,1	5,1
Other consumer goods	14,9	0,7	-3,4	-3,8
Special indices:				
10-11 Food industry	8,7	-0,6	-3,1	-0,5
13-15 Textile, clothing and leather industry	1,3	14,7	14,7	-0,1
16-17 Forest industry	10,7	2,6	2,0	-0,5
19-22 Chemical industry	13,1	-1,8	-1,8	-27,1
24-30 Metal industry	38,5	7,6	5,0	-8,6
26-27 Electrical and electronics industry	13,9	-9,6	-8,5	-12,3
25,28-30,33 Machinery and metal product industry	26,2	18,4	15,7	1,2
29-30 Manufacture of transport equipment	2,5	-7,3	-7,3	-32,6

## Appendix figures

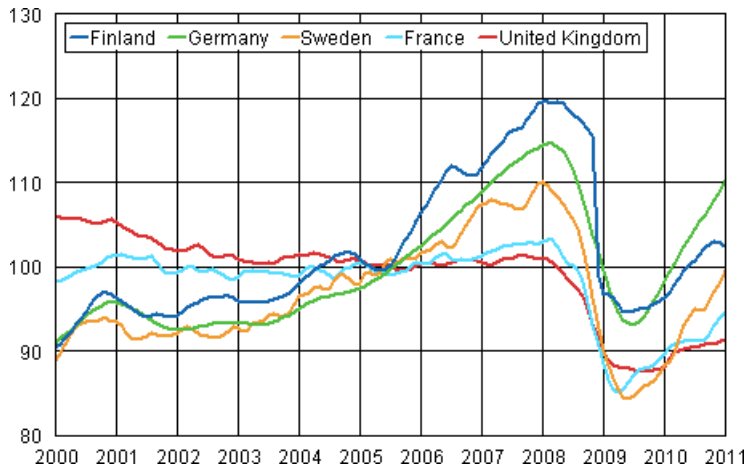
**Appendix figure 1. Working day adjusted change percentage of industrial output January 2010 /January 2011, TOL 2008**



**Appendix figure 2. Seasonally adjusted change percentage of industrial output December 2010 /January 2010, TOL 2008**



**Appendix figure 3. Trend of industrial output Finland, Germany, Sweden, France and United Kingdom (BCD) 2000 - 2011, 2005=100, TOL 2008**



### Inquiries

Kari Rautio (09) 1734 2479

Director in charge:

Hannele Orjala

[volyyimi.indeksi@stat.fi](mailto:volyyimi.indeksi@stat.fi)

[www.stat.fi](http://www.stat.fi)

Source: Volume Index of Industrial Output 2011, January. Statistics Finland