

Volume index of industrial output

2011, March

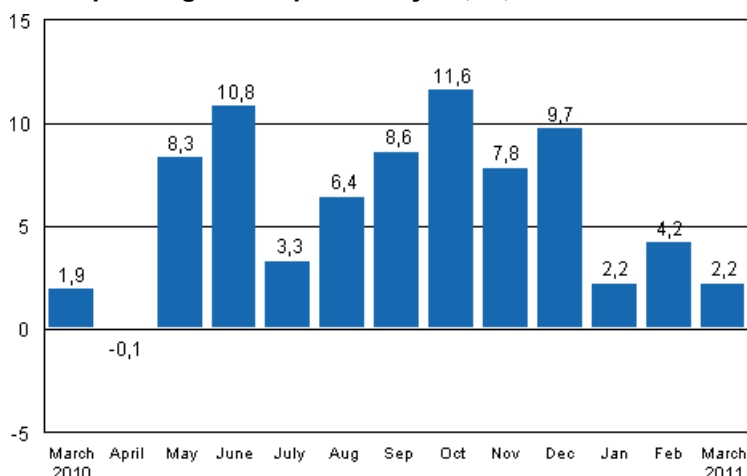
Industrial output grew by 2.2 per cent in March

Corrected 28 June 2011

Nearly all figures have been revised. [Further information](#) about the correction.

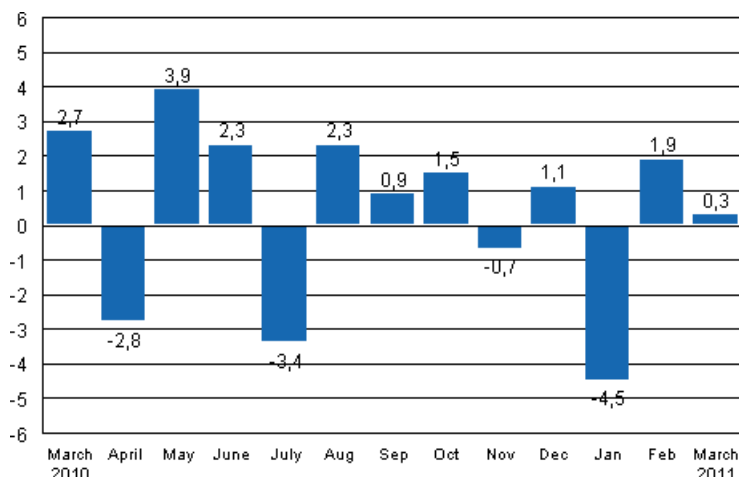
According to Statistics Finland, output of total industries adjusted for working days was 2.2 per cent higher in March 2011 than twelve months earlier. In February output was 4.2 per cent higher than in February 2010.

Working day adjusted change in industrial output (BCDE) from corresponding month previous year, %, TOL 2008



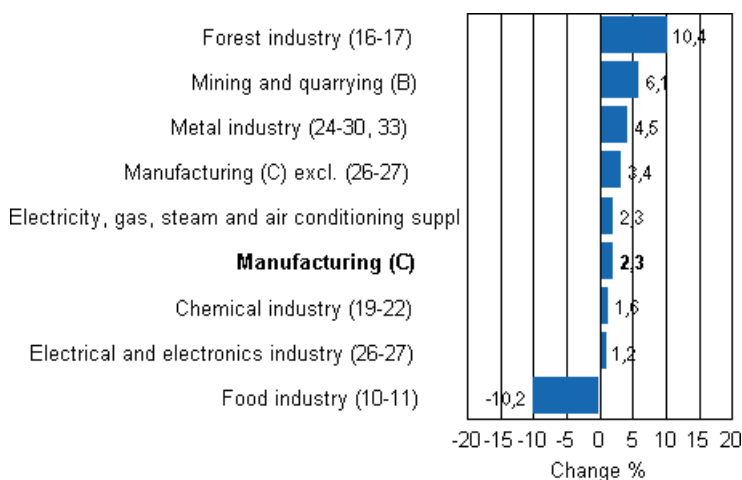
Seasonally adjusted output increased in March by 0.3 per cent compared with the previous month. In February output increased by 1.9 per cent from the previous month. In January seasonally adjusted output fell by 4.5 per cent from December.

Seasonally adjusted change in industrial output (BCDE) from previous month, %, TOL 2008



Among all industries, mining and quarrying went up in March by 6.1 per cent. Electricity production went up by 3 per cent. In the metal industry, output grew by 4.5 per cent. Output in the electrical and electronics industry went up by 1.2 per cent. In the chemical industry, output increased by 1.6 per cent. Among the main industries, output fell most in the food industry, where output was good ten per cent lower than one year previously.

Working day adjusted change in industrial output by industry 3/2010-3/2011, %, TOL 2008



Capacity utilisation rate in manufacturing was 81.4 per cent in March, or 6.1 percentage points higher than one year earlier. In the forest industry, capacity utilisation rate was 87.2 per cent in March, or nine percentage points lower than in March 2010. In the metal industry, capacity utilisation rate was 82.2 per cent in March, or 8.7 percentage points higher than one year earlier.

Contents

Industrial output grew by 2.2 per cent in March	4
---	---

Tables

Table 1. Volume index of industrial output, value added, original, working day adjusted, seasonally adjusted change percentage.....	5
---	---

Figures

Appendix figures

Appendix figure 1. Working day adjusted change percentage of industrial output March 2010 /March 2011, TOL 2008.....	6
Appendix figure 2. Seasonally adjusted change percentage of industrial output February 2011 /March 2010, TOL 2008.....	6
Appendix figure 3. Trend of industrial output Finland, Germany, Sweden, France and United Kingdom (BCD) 2000 - 2011, 2005=100, TOL 2008.....	7

Industrial output grew by 2.2 per cent in March

According to Statistics Finland, output of total industries (BCDE) adjusted for working days was 2.2 per cent higher in March 2011 than twelve months earlier. Seasonally adjusted output increased in March by 0.3 per cent compared with the previous month.

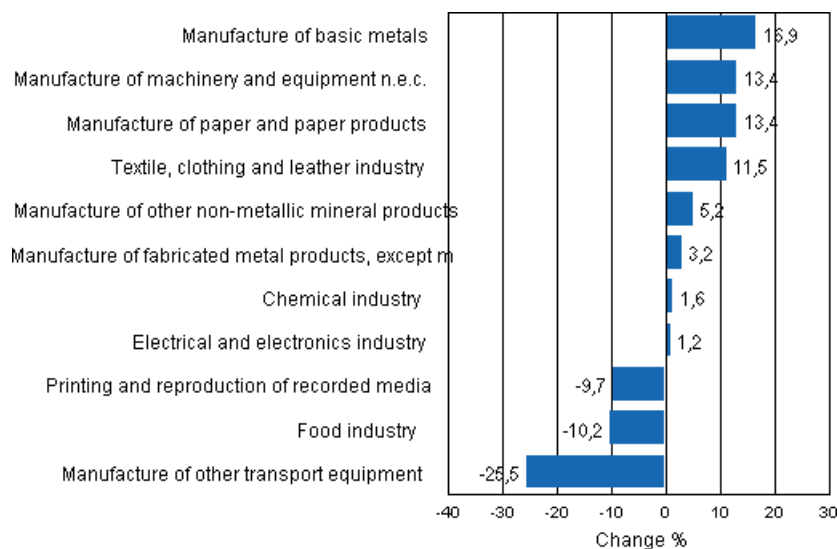
Adjusted for working days, industrial output (C) increased by 2.3 per cent from one year back in March. The manufacture of transport equipment decreased by 25.5 per cent. The manufacture of food also diminished. Its output fell by 8.1 per cent from March 2010. The manufacture of basic metals grew by 16.9 per cent.

Table 1. Volume index of industrial output, value added, original, working day adjusted, seasonally adjusted change percentage

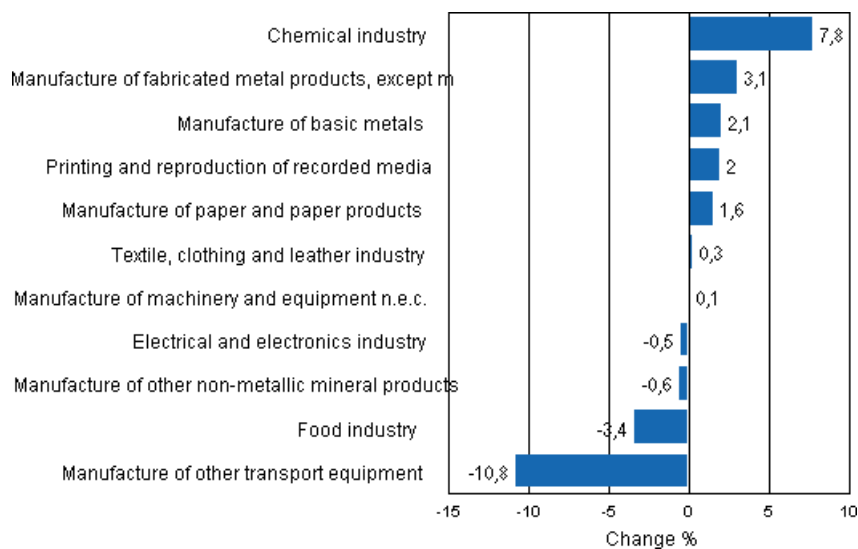
	Value added share	Original change percentage, 2011 MAR / 2010 MAR	Working day adj. change percentage, 2011 MAR / 2010 MAR	Seasonal adj. change percentage, 2011 MAR / 2011 FEB
Industry (Tol 2008)				
Total industries	100,0	5,5	2,2	0,3
B Mining and quarrying	1,6	14,4	6,1	0,0
C Manufacturing	83,6	5,9	2,3	3,6
10 Manufacture of food products	7,4	-5,9	-8,1	-2,5
11 Manufacture of beverages	1,3	-17,4	-19,5	-0,0
13 Manufacture of textiles	0,7	15,2	11,6	0,2
14 Manufacture of wearing apparel	0,4	22,7	16,7	0,0
15 Manufacture of leather and related products	0,2	5,0	-1,7	-3,1
16 Manufacture of wood and of products of wood and cork, except furniture; manufacture of articles of straw and plaiting materials	3,3	8,9	2,8	3,7
17 Manufacture of paper and paper products	7,5	14,1	13,4	1,6
18 Printing and reproduction of recorded media	2,2	-6,2	-9,7	2,0
23 Manufacture of other non-metallic mineral products	3,0	11,0	5,2	-0,6
24 Manufacture of basic metals	2,1	18,2	16,9	2,1
25 Manufacture of fabricated metal products, except machinery and equipment	8,6	7,5	3,2	3,1
28 Manufacture of machinery and equipment n.e.c.	11,3	18,2	13,4	0,1
29 Manufacture of motor vehicles, trailers and semi-trailers	1,1	-5,7	-12,3	-15,4
30 Manufacture of other transport equipment	1,4	-35,3	-39,4	-8,2
31 Manufacture of furniture	1,3	6,2	1,2	-1,4
32 Other manufacturing	0,9	-6,9	-8,9	-0,3
33 Repair and installation of machinery and equipment	3,9	15,3	11,1	1,9
D Electricity, gas, steam and air conditioning supply	12,4	2,3	2,3	0,2
E Water supply; sewerage, waste management and remediation activities	2,3	2,3	-0,4	-2,4
36 Water collection, treatment and supply	0,7	2,2	1,2	-1,3
Main industrial groupings:				
Raw materials and productive goods	34,6	12,1	8,4	3,5
Investment goods	31,1	5,0	2,3	-1,3
Durable goods	1,7	8,5	2,5	-0,2
Other consumer goods	14,9	-3,3	-6,7	-1,7
Special indices:				
10-11 Food industry	8,7	-7,7	-10,2	-3,4
13-15 Textile, clothing and leather industry	1,3	15,8	11,5	0,3
16-17 Forest industry	10,7	12,4	10,4	1,9
19-22 Chemical industry	13,1	3,9	1,6	7,8
24-30 Metal industry	38,5	7,8	3,5	-1,4
26-27 Electrical and electronics industry	13,9	4,5	1,2	-0,5
25,28-30,33 Machinery and metal product industry	26,2	9,9	4,3	-2,2
29-30 Manufacture of transport equipment	2,5	-22,6	-25,5	-10,8

Appendix figures

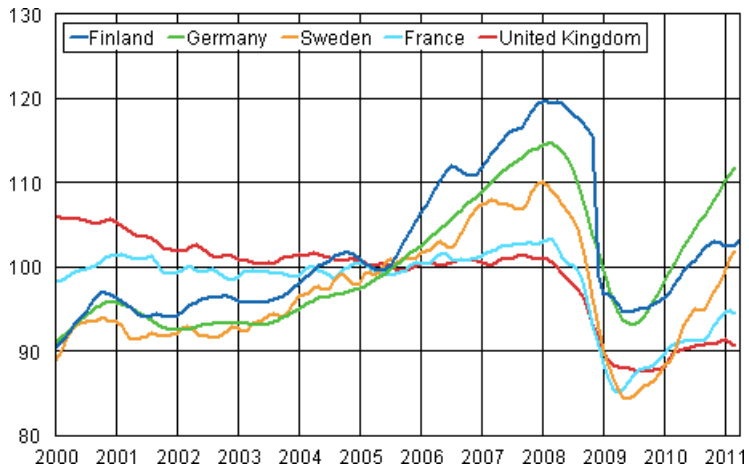
Appendix figure 1. Working day adjusted change percentage of industrial output March 2010 /March 2011, TOL 2008



Appendix figure 2. Seasonally adjusted change percentage of industrial output February 2011 /March 2010, TOL 2008



Appendix figure 3. Trend of industrial output Finland, Germany, Sweden, France and United Kingdom (BCD) 2000 - 2011, 2005=100, TOL 2008



Inquiries

Kari Rautio (09) 1734 2479

Director in charge:

Hannele Orjala

volyyimi.indeksi@stat.fi

www.stat.fi

Source: Volume Index of Industrial Output 2011, March. Statistics Finland