

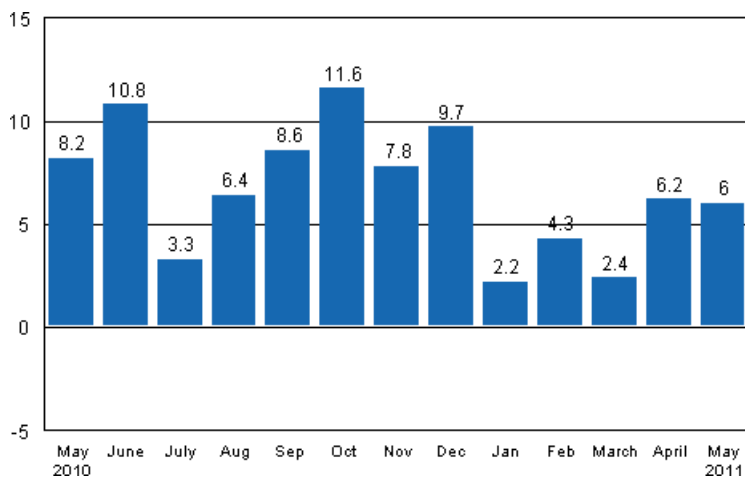
Volume index of industrial output

2011, May

Industrial output grew by 6 per cent in May

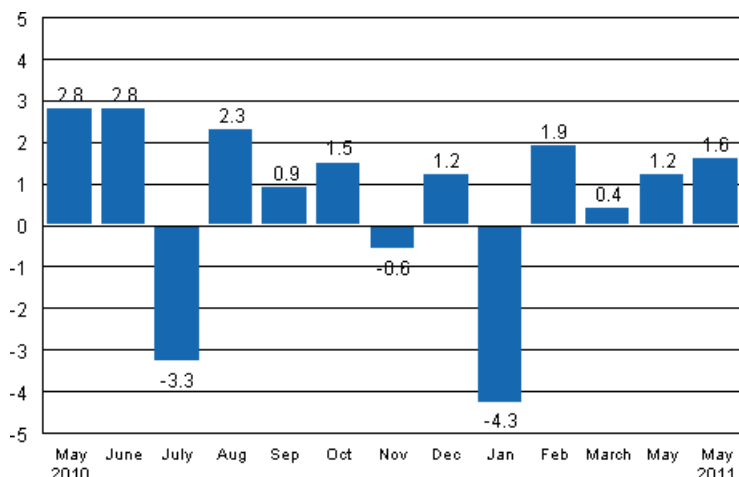
According to Statistics Finland, output of total industries adjusted for working days was 6 per cent higher in May 2011 than twelve months earlier. In April, output was 6.2 per cent higher than in April 2010. In the January to May period, industrial output adjusted for working days grew by 4.3 per cent from twelve months back.

Working day adjusted change in industrial output (BCDE) from corresponding month previous year, %, TOL 2008



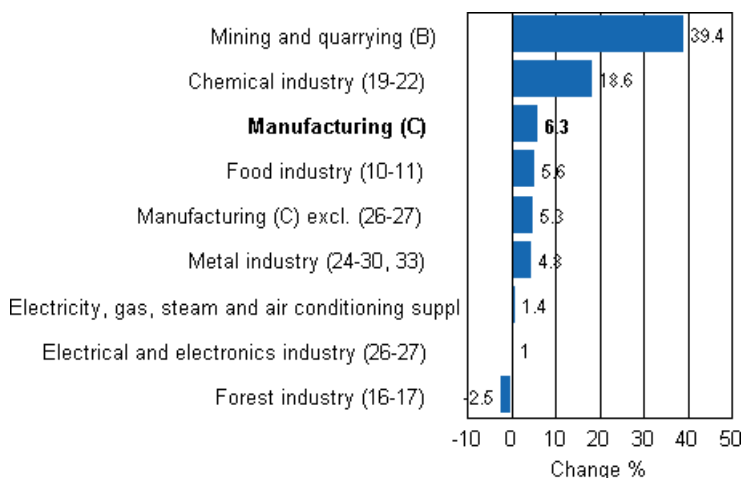
In May, seasonally adjusted output went up by 1.6 per cent from April. In April, output increased by 1.2 per cent from the previous month. In March, seasonally adjusted output went up by 0.4 per cent from February.

Seasonally adjusted change in industrial output (BCDE) from previous month, %, TOL 2008



Output went up in most main industries in May. Output increased most, or by as much as 39.4 per cent, in mining and quarrying. In the chemical industry, output was 18.6 per cent higher in May than one year ago. In the food industry, output grew by 5.6 per cent. Output in the metal industry was 4.8 per cent higher than one year previously. In the forest industry, output decreased by 2.5 per cent in May.

Working day adjusted change in industrial output by industry 5/2010-5/2011, %, TOL 2008



Capacity utilisation rate in manufacturing was 85.2 per cent in May, or 10.8 percentage points higher than twelve months earlier. In the forest industry, capacity utilisation rate was 90.7 per cent in May, or 4.9 percentage points higher than in May 2010. In the metal industry, capacity utilisation rate was 88.7 per cent in May, or 19.3 percentage points higher than one year earlier.

Estimation

Statistics Finland has increased the use of estimation. The main reason why the data become revised is the estimation used for activities 26-27. Some listed companies do not provide their data within the production timetable of the statistics so these data have to be estimated. This has to be done eight times per year. For instance, the data for May were estimated. The Tax Administration’s periodic tax return data are used to compile statistics on the output of enterprises with fewer than 50 employees. Enterprises with fewer than 50 employees account for around 13 per cent of industrial output and these data cover nearly 70 per cent of the production of enterprises with fewer than 50 employees. These data are not at Statistics

Finland's disposal by the release date of the volume index of industrial output. For this reason the data on these enterprises are estimated for the month the release relates to, i.e. in this case May. The Tax Administration's data will be available when releasing data for the month for the second time, i.e. in the data for April.

Revised data for May will be published at 9 am on 10 August 2011 in connection with industrial output data for June. Because of the method used, seasonally adjusted figures for previous months may change even if the original figures do not become revised. The seasonally adjusted figures will also be adjusted for working days.

Contents

Industrial output grew by 6.0 per cent in May.....	5
--	---

Tables

Table 1. Volume index of industrial output, value added, original, working day adjusted, seasonally adjusted change percentage.....	6
---	---

Figures

Appendix figures

Appendix figure 1. Working day adjusted change percentage of industrial output May 2010 /May 2011, TOL 2008.....	7
Appendix figure 2. Seasonally adjusted change percentage of industrial output April 2011 /May 2011, TOL 2008..	7
Appendix figure 3. Trend of industrial output Finland, Germany, Sweden, France and United Kingdom (BCD) 2000 - 2011, 2005=100, TOL 2008.....	8

Industrial output grew by 6.0 per cent in May

According to Statistics Finland, output of total industries (BCDE) adjusted for working days was 6.0 per cent higher in May than twelve months earlier. Seasonally adjusted output grew by 1.6 per cent in May relative to April.

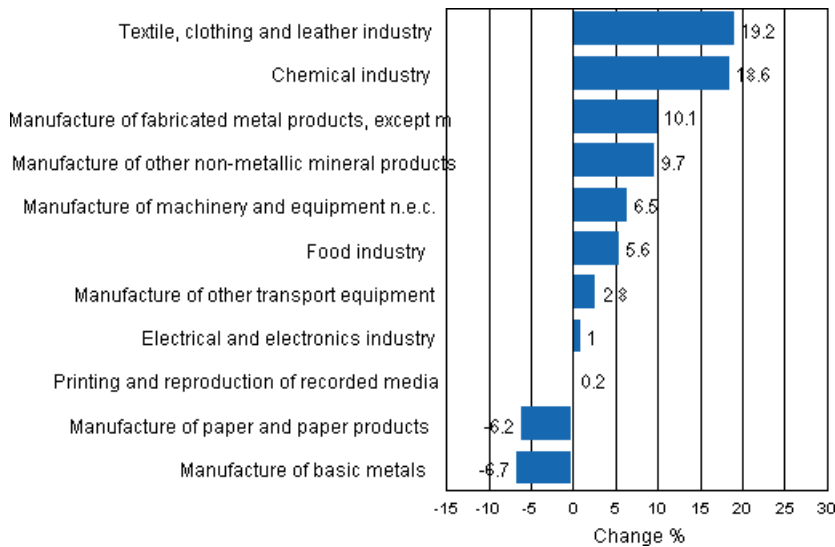
Adjusted for working days, industrial output (C) went up by 6.3 per cent in May from one year back. Output grew most, or by 27.1 per cent, in the manufacture of leather and related products.

Table 1. Volume index of industrial output, value added, original, working day adjusted, seasonally adjusted change percentage

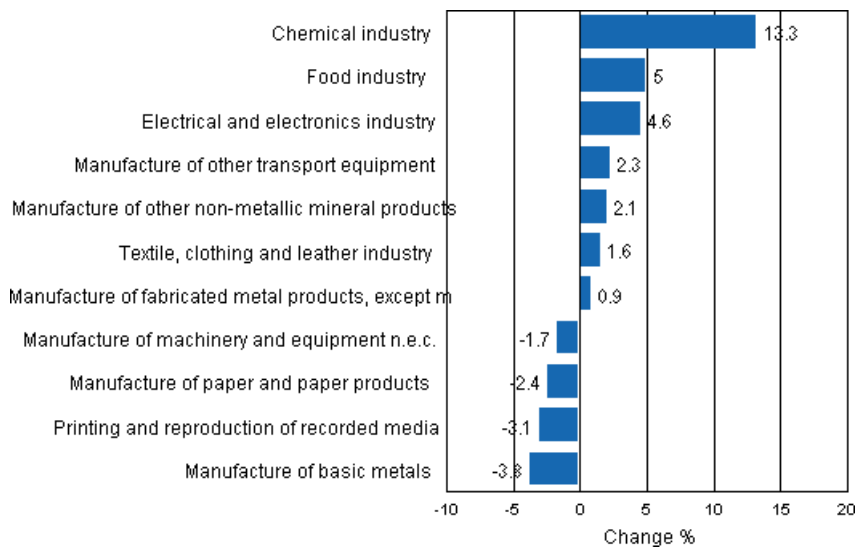
	Value added share	Original change percentage, 2011 MAY / 2010 MAY	Working day adj. change percentage, 2011 MAY / 2010 MAY	Seasonal adj. change percentage, 2011 MAY / 2011 APR
Industry (Tol 2008)				
Total industries	100,0	6,4	6,0	1,6
B Mining and quarrying	1,6	39,3	39,4	-4,6
C Manufacturing	83,6	6,5	6,3	3,3
10 Manufacture of food products	7,4	5,4	4,8	4,7
11 Manufacture of beverages	1,3	10,3	10,3	1,8
13 Manufacture of textiles	0,7	9,5	9,5	1,9
14 Manufacture of wearing apparel	0,4	30,7	26,7	2,9
15 Manufacture of leather and related products	0,2	27,1	27,1	-0,5
16 Manufacture of wood and of products of wood and cork, except furniture; manufacture of articles of straw and plaiting materials	3,3	6,6	5,6	2,6
17 Manufacture of paper and paper products	7,5	-6,0	-6,2	-2,4
18 Printing and reproduction of recorded media	2,2	-0,8	0,2	-3,1
23 Manufacture of other non-metallic mineral products	3,0	12,4	9,7	2,1
24 Manufacture of basic metals	2,1	-6,4	-6,7	-3,8
25 Manufacture of fabricated metal products, except machinery and equipment	8,6	10,1	10,1	0,9
28 Manufacture of machinery and equipment n.e.c.	11,3	5,0	6,5	-1,7
29 Manufacture of motor vehicles, trailers and semi-trailers	1,1	18,3	12,9	10,6
30 Manufacture of other transport equipment	1,4	-9,7	-9,7	-2,3
31 Manufacture of furniture	1,3	10,7	6,3	1,0
32 Other manufacturing	0,9	10,1	10,1	-0,5
33 Repair and installation of machinery and equipment	3,9	6,1	5,1	1,1
D Electricity, gas, steam and air conditioning supply	12,4	1,5	1,4	2,0
E Water supply; sewerage, waste management and remediation activities	2,3	4,0	4,2	-0,9
36 Water collection, treatment and supply	0,7	4,5	4,5	-0,4
Main industrial groupings:				
Raw materials and productive goods	34,6	7,2	7,2	3,4
Investment goods	31,1	1,4	-1,1	-0,9
Durable goods	1,7	24,0	22,6	12,7
Other consumer goods	14,9	13,9	10,3	5,1
Special indices:				
10-11 Food industry	8,7	6,2	5,6	5,0
13-15 Textile, clothing and leather industry	1,3	19,2	19,2	1,6
16-17 Forest industry	10,7	-2,1	-2,5	-0,7
19-22 Chemical industry	13,1	18,6	18,6	13,3
24-30 Metal industry	38,5	4,6	4,6	1,2
26-27 Electrical and electronics industry	13,9	2,8	1,0	4,6
25,28-30,33 Machinery and metal product industry	26,2	6,6	6,9	0,2
29-30 Manufacture of transport equipment	2,5	2,8	2,8	2,3

Appendix figures

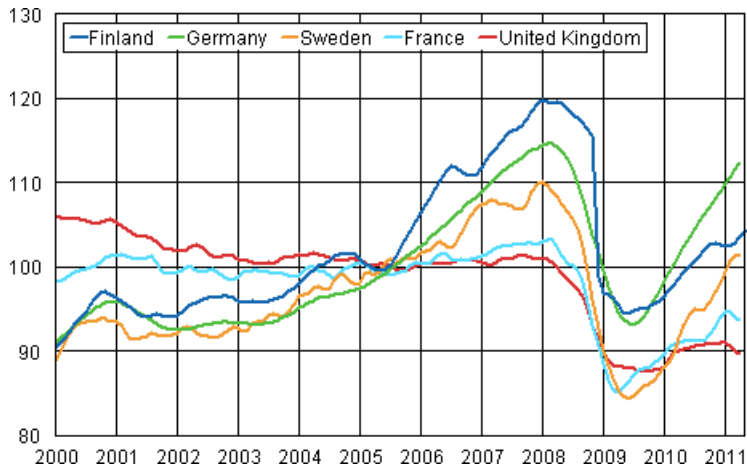
Appendix figure 1. Working day adjusted change percentage of industrial output May 2010 /May 2011, TOL 2008



Appendix figure 2. Seasonally adjusted change percentage of industrial output April 2011 /May 2011, TOL 2008



Appendix figure 3. Trend of industrial output Finland, Germany, Sweden, France and United Kingdom (BCD) 2000 - 2011, 2005=100, TOL 2008



Suomen virallinen tilasto
Finlands officiella statistik
Official Statistics of Finland

Industry 2011

Inquiries

Kari Rautio (09) 1734 2479

Director in charge:

Hannele Orjala

volyyimi.indeksi@stat.fi

www.stat.fi

Source: Volume Index of Industrial Output 2011, May. Statistics Finland