

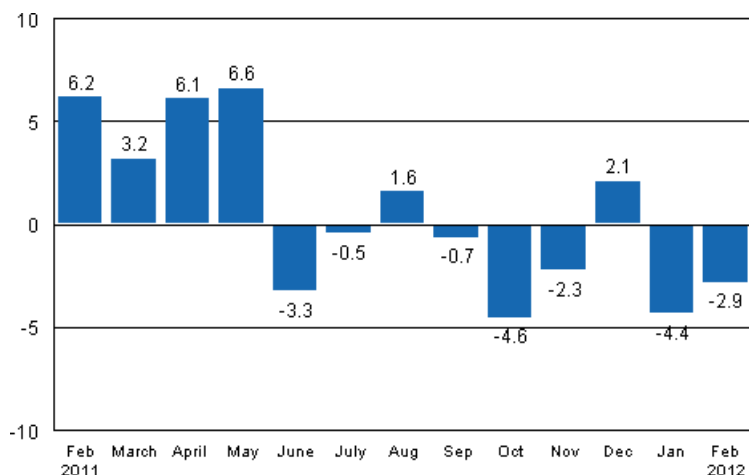
Volume index of industrial output

2012, February

Industrial output went down by 2.9 per cent year-on-year in February

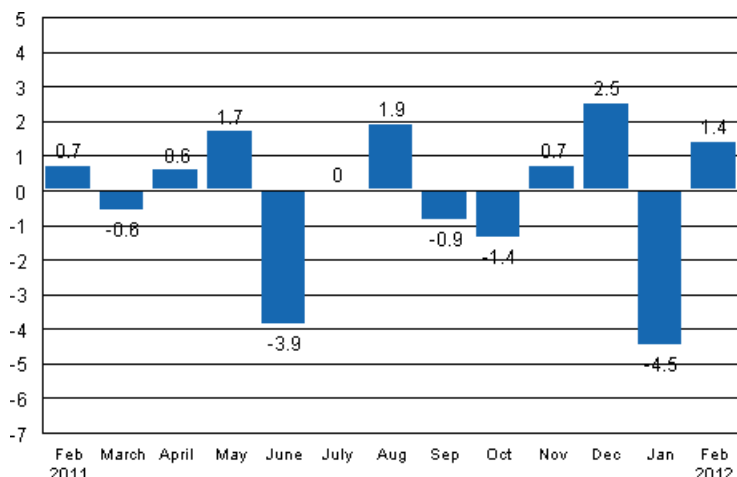
According to Statistics Finland, output of total industries adjusted for working days was 2.9 per cent lower in February 2012 than twelve months earlier.

Working day adjusted change in industrial output (BCDE) from corresponding month previous year, %, TOL 2008



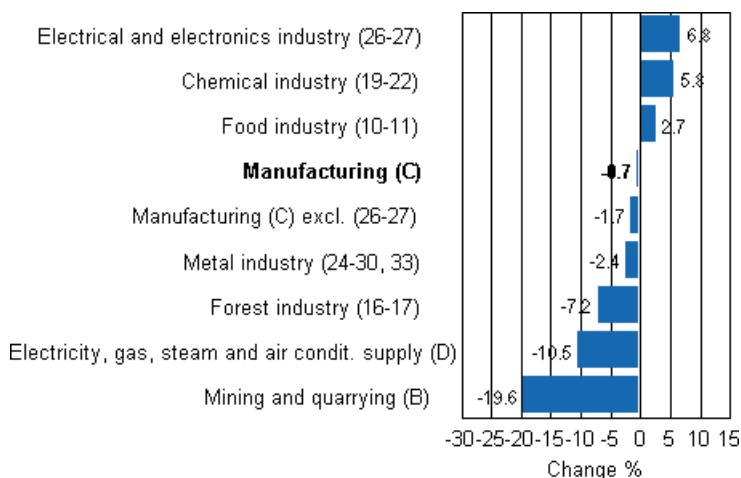
Seasonally adjusted industrial output went up by 1.4 per cent from January to February. In January, output went down by 4.5 per cent from the month before. In December, seasonally adjusted output was 2.5 per cent higher than in November.

Seasonally adjusted change in industrial output (BCDE) from previous month, %, TOL 2008



Industrial output diminished in several main industries in February. Output declined most, by 19.6 per cent, in mining and quarrying. In the forest industry, output went down by 7.2 per cent from one year ago. In the metal industry, output was 2.4 per cent lower than in February 2011. Output increased most in the electrical and electronics industry, or by 6.8 per cent.

Working day adjusted change in industrial output by industry 2/2011-2/2012, %, TOL 2008



Capacity utilisation rate in manufacturing was 80.3 per cent in February, or 0.4 percentage points higher than one year earlier. In the forest industry, capacity utilisation rate was 82.1 per cent in February, or 2.9 percentage points lower than in February 2011. Capacity utilisation rate in the metal industry was 80 per cent in February, which is 0.2 percentage points higher than one year previously.

Revised data for February 2012 will be published at 9 am on 10 May 2012 in connection with the release of industrial output data for March 2012. The revision was caused by the estimation used in the latest release concerning industry 26 to 27 and the periodic tax return data used for enterprises with fewer than 50 employees. Because of the method used, seasonally adjusted figures for previous months may change even if the original figures do not become revised. The seasonally adjusted figures will also be adjusted for working days.

Contents

Industrial output fell by 2.9 per cent in February	4
--	---

Tables

Table 1. Volume index of industrial output, value added, original, working day adjusted, seasonally adjusted change percentage.....	5
---	---

Figures

Appendix figures

Appendix figure 1. Working day adjusted change percentage of industrial output February 2011 /February 2012, TOL 2008.....	6
Appendix figure 2. Seasonally adjusted change percentage of industrial output January 2012 /February 2012, TOL 2008.....	6
Appendix figure 3. Trend of industrial output Finland, Germany, Sweden, France and United Kingdom (BCD) 2000 - 2012, 2005=100, TOL 2008.....	7

Industrial output fell by 2.9 per cent in February

According to Statistics Finland, output of total industries adjusted for working days was 2.9 per cent lower in February 2012 than twelve months earlier. Seasonally adjusted industrial output went up by 1.4 per cent from January to February.

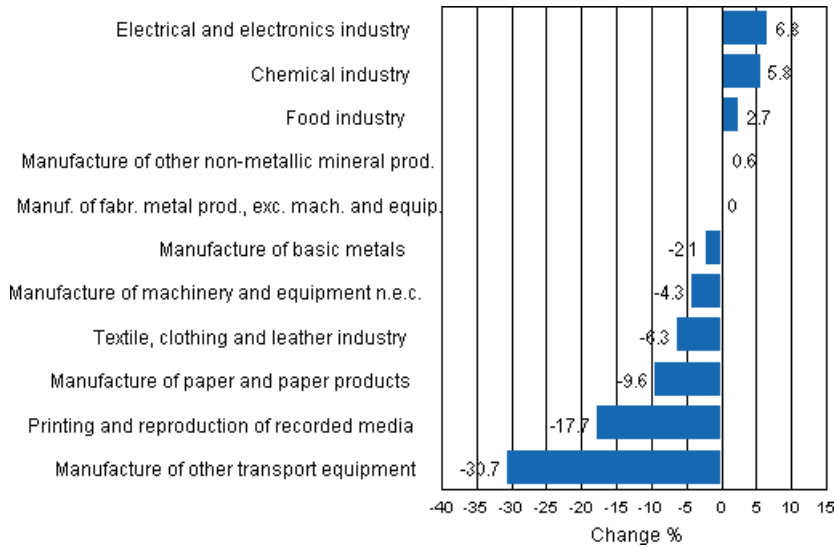
Adjusted for working days, industrial output (C) decreased by 0.7 per cent in February from one year back. Seasonally adjusted output went up by 1.3 per cent from the month before.

Table 1. Volume index of industrial output, value added, original, working day adjusted, seasonally adjusted change percentage

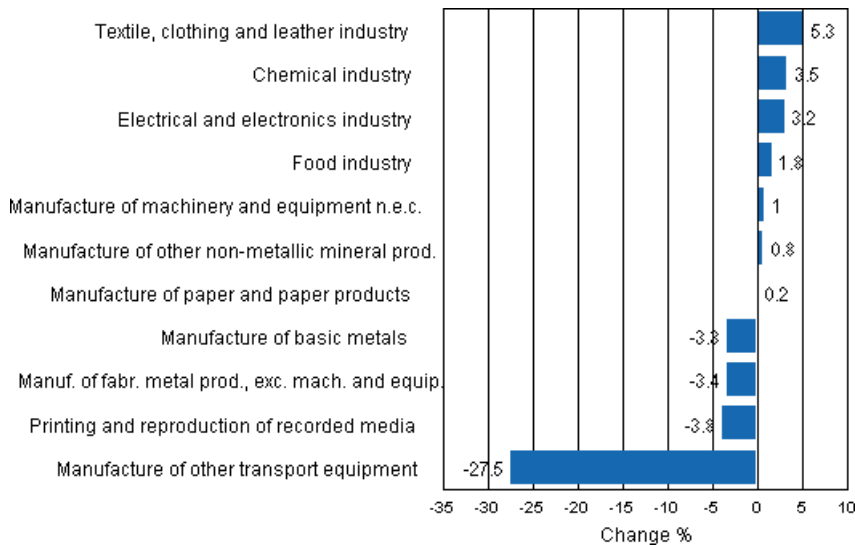
	Value added share	Original change percentage, 2012 FEB / 2011 FEB	Working day adj. change percentage, 2012 FEB / 2011 FEB	Seasonal adj. change percentage, 2012 FEB / 2012 JAN
Industry (Tol 2008)				
Total industries	100,0	-3,2	-2,9	1,4
B Mining and quarrying	1,7	-24,3	-19,6	-8,8
C Manufacturing	83,7	-2,0	-0,7	1,3
10 Manufacture of food products	6,5	0,5	2,4	1,0
11 Manufacture of beverages	1,3	1,9	1,9	1,3
13 Manufacture of textiles	0,6	6,5	8,6	7,2
14 Manufacture of wearing apparel	0,4	-16,0	-16,4	-0,2
15 Manufacture of leather and related products	0,3	-33,2	-28,4	-1,4
16 Manufacture of wood and of products of wood and cork, except furniture; manufacture of articles of straw and plaiting materials	3,9	5,0	6,3	6,5
17 Manufacture of paper and paper products	9,8	-9,5	-9,6	0,2
18 Printing and reproduction of recorded media	1,8	-18,1	-17,7	-3,8
23 Manufacture of other non-metallic mineral products	2,9	-1,9	0,6	0,8
24 Manufacture of basic metals	4,3	-2,5	-2,1	-3,3
25 Manufacture of fabricated metal products, except machinery and equipment	7,2	-2,8	-0,0	-3,4
28 Manufacture of machinery and equipment n.e.c.	11,2	-5,3	-4,3	1,0
29 Manufacture of motor vehicles, trailers and semi-trailers	1,1	-52,6	-49,7	-38,8
30 Manufacture of other transport equipment	0,9	2,5	2,5	2,1
31 Manufacture of furniture	1,1	1,7	4,0	2,1
32 Other manufacturing	0,8	27,1	29,8	4,4
33 Repair and installation of machinery and equipment	3,3	-4,1	-6,0	3,9
D Electricity, gas, steam and air conditioning supply	12,0	-8,3	-10,5	7,3
E Water supply; sewerage, waste management and remediation activities	2,7	4,8	6,3	4,7
36 Water collection, treatment and supply	0,6	5,8	5,8	5,2
Main industrial groupings:				
Raw materials and productive goods	39,0	-4,1	-2,6	0,7
Investment goods	28,8	-3,5	-0,5	2,3
Durable goods	1,4	4,4	7,3	2,6
Other consumer goods	13,4	3,0	5,1	3,2
Special indices:				
10-11 Food industry	7,8	0,7	2,7	1,8
13-15 Textile, clothing and leather industry	1,2	-9,2	-6,3	5,3
16-17 Forest industry	13,6	-5,7	-7,2	0,9
19-22 Chemical industry	13,1	5,3	5,8	3,5
24-30 Metal industry	38,0	-3,3	-1,8	-1,1
26-27 Electrical and electronics industry	13,4	4,1	6,8	3,2
25,28-30,33 Machinery and metal product industry	23,7	-7,6	-7,7	-2,6
29-30 Manufacture of transport equipment	2,0	-32,7	-30,7	-27,5

Appendix figures

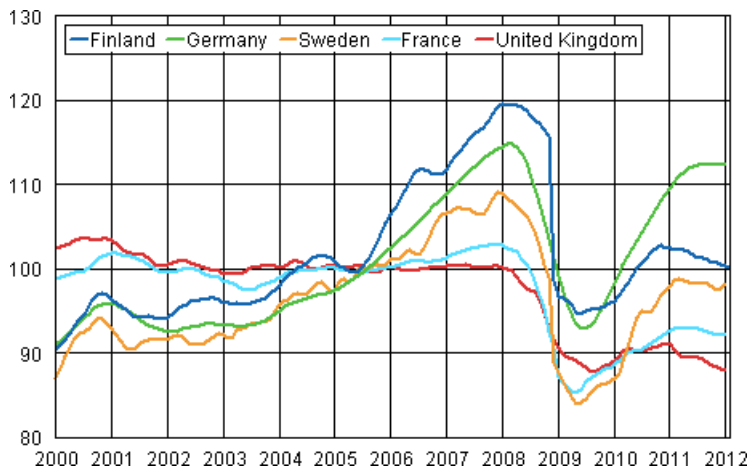
Appendix figure 1. Working day adjusted change percentage of industrial output February 2011 /February 2012, TOL 2008



Appendix figure 2. Seasonally adjusted change percentage of industrial output January 2012 /February 2012, TOL 2008



Appendix figure 3. Trend of industrial output Finland, Germany, Sweden, France and United Kingdom (BCD) 2000 - 2012, 2005=100, TOL 2008



Suomen virallinen tilasto
Finlands officiella statistik
Official Statistics of Finland

Industry 2012

Inquiries

Kari Rautio 09 1734 2479

Jukka Appelqvist 09 1734 3391

Director in charge:

Hannele Orjala

volyymi.indeksi@stat.fi

www.stat.fi

Source: Volume Index of Industrial Output 2012, February. Statistics Finland