

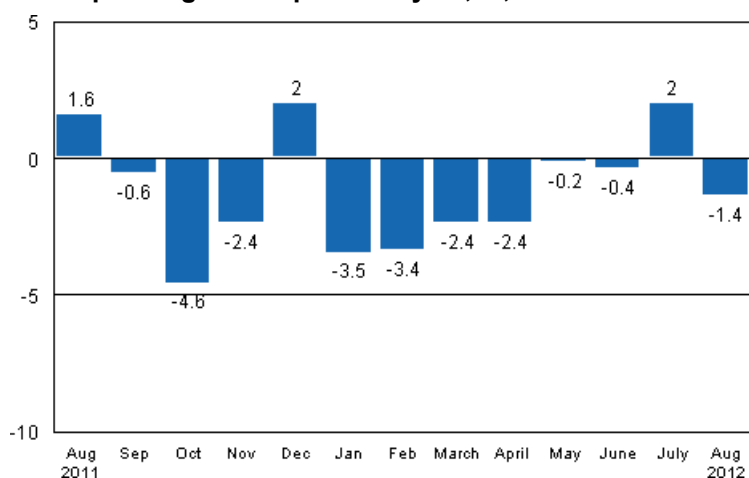
Volume index of industrial output

2012, August

Industrial output decreased by 1.4 per cent year-on-year in August

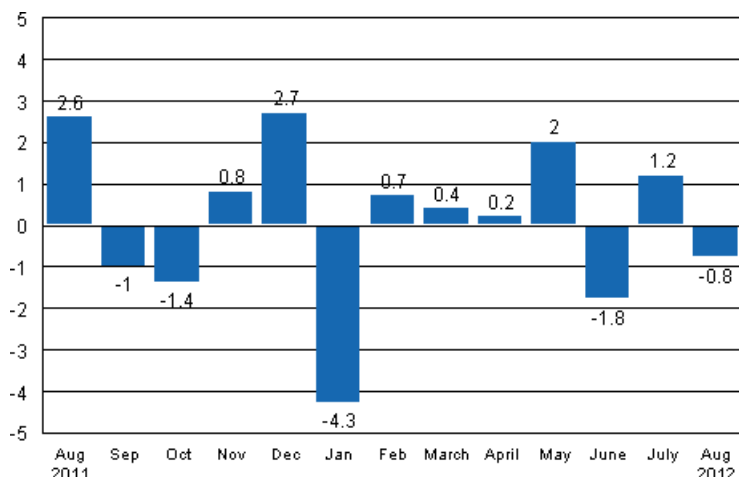
According to Statistics Finland, output of total industries adjusted for working days was 1.4 per cent lower in August 2012 than twelve months earlier. In the January to August period, industrial output adjusted for working days went down by 1.4 per cent from twelve months back.

Working day adjusted change in industrial output (BCDE) from corresponding month previous year, %, TOL 2008



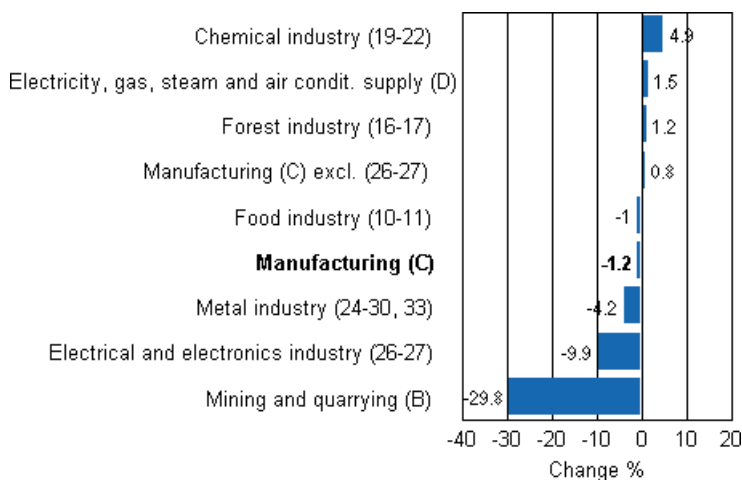
In August, seasonally adjusted output went down by 0.8 per cent from the month before. In July, output grew by 1.2 per cent from June. In June, seasonally adjusted output was 1.8 per cent lower than in May.

Seasonally adjusted change in industrial output (BCDE) from previous month, %, TOL 2008



Among the main industries, the largest drop of almost 30 per cent was seen in the output of mining and quarrying. Output went down by 4.2 per cent in the metal industry. In the chemical industry, output was 4.9 per cent higher than in August 2011. In the forest industry, output grew by 1.2 per cent from one year ago.

Working day adjusted change in industrial output by industry 8/2011-8/2012, %, TOL 2008



In August, capacity utilisation rate in manufacturing (C) was 80.8 per cent, or two percentage points higher than one year earlier. In the forest industry, capacity utilisation rate was 88.9 per cent in August, or 3.5 percentage points higher than in August 2011. Capacity utilisation rate in the metal industry was 79.3 per cent in August, which was 3.9 percentage points higher than twelve months earlier.

Checking of weights

Following the calculation principle of the chain-linked index, establishment and industry-specific weights are changed annually to correspond to the industry and production structure of manufacturing. Changes in weights also have an impact at the level of total industries. The figures in the statistical release for August were calculated using new heading-specific weights. The change in weights has some effect on the index point figures and change percentages for the early part of the year.

Revised data for August 2012 will be published at 9 am on 9 November 2012 in connection with the release of industrial output data for September 2012. The revision is influenced by the estimation used in the latest release which concerns the periodic tax return data used for enterprises with fewer than 50 employees. Because of the method used, seasonally adjusted figures for previous months may change even if the original figures do not become revised. The seasonally adjusted figures will also be adjusted for working days.

Contents

Industrial output decreased by 1.4 per cent year-on-year in August	5
--	---

Tables

Volume index of industrial output, value added, original, working day adjusted, seasonally adjusted change percentage.....	6
--	---

Figures

Appendix figures

Appendix figure 1. Working day adjusted change percentage of industrial output August 2011 /August 2012, TOL 2008.....	7
Appendix figure 2. Seasonally adjusted change percentage of industrial output July 2012 /August 2012, TOL 2008.....	7
Appendix figure 3. Trend of industrial output Finland, Germany, Sweden, France and United Kingdom (BCD) 2000 - 2012, 2005=100, TOL 2008.....	8

Revisions in these statistics.....	9
------------------------------------	---

Industrial output decreased by 1.4 per cent year-on-year in August

According to Statistics Finland, output of total industries adjusted for working days was 1.4 per cent lower in August 2012 than twelve months earlier. Seasonally adjusted output was 0.8 per cent lower in August than in July.

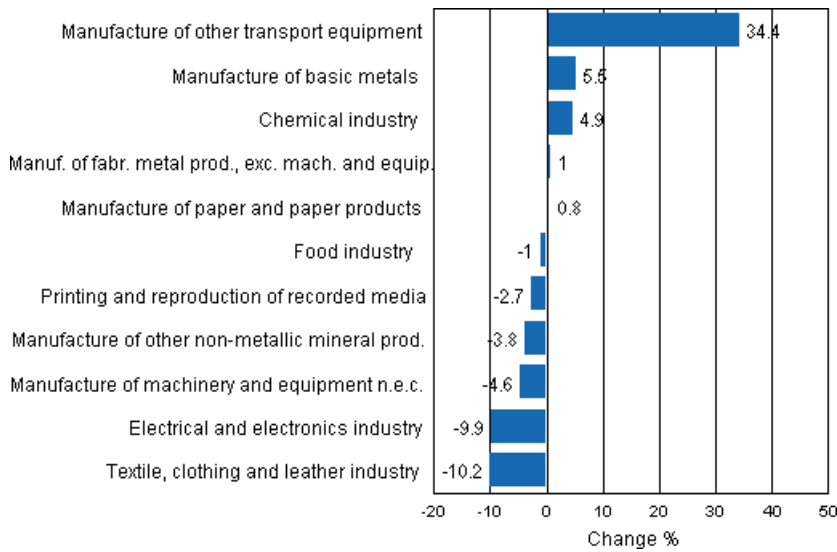
Adjusted for working days, industrial output (C) decreased by 1.2 per cent in August from one year back. Seasonally adjusted output went down by close on one per cent from the month before.

Volume index of industrial output, value added, original, working day adjusted, seasonally adjusted change percentage

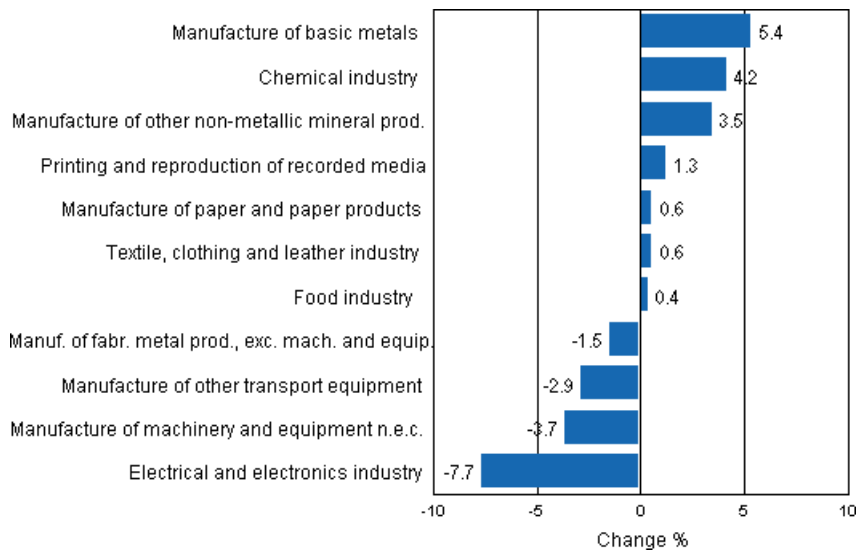
	Value added share	Original change percentage, 2012 AUG / 2011 AUG	Working day adj. change percentage, 2012 AUG / 2011 AUG	Seasonal adj. change percentage, 2012 AUG / 2012 JUL
Industry (Tol 2008)				
Total industries	100,0	-1,0	-1,4	-0,8
B Mining and quarrying	1,7	-27,3	-29,8	-4,2
C Manufacturing	83,7	-0,6	-1,2	-0,8
10 Manufacture of food products	6,5	-1,0	-0,7	-0,6
11 Manufacture of beverages	1,3	-3,4	-3,4	2,4
13 Manufacture of textiles	0,6	5,5	5,9	4,6
14 Manufacture of wearing apparel	0,4	-17,2	-18,6	-3,2
15 Manufacture of leather and related products	0,3	-27,6	-27,1	-10,4
16 Manufacture of wood and of products of wood and cork, except furniture; manufacture of articles of straw and plaiting materials	3,9	1,1	1,9	2,4
17 Manufacture of paper and paper products	9,8	1,2	0,8	0,6
18 Printing and reproduction of recorded media	1,8	-2,6	-2,7	1,3
23 Manufacture of other non-metallic mineral products	2,9	-3,7	-3,8	3,5
24 Manufacture of basic metals	4,3	6,1	5,5	5,4
25 Manufacture of fabricated metal products, except machinery and equipment	7,2	1,0	1,0	-1,5
28 Manufacture of machinery and equipment n.e.c.	11,2	-4,6	-4,6	-3,7
29 Manufacture of motor vehicles, trailers and semi-trailers	1,1	41,6	44,7	-1,0
30 Manufacture of other transport equipment	0,9	28,1	28,1	0,6
31 Manufacture of furniture	1,1	-7,4	-6,7	-3,7
32 Other manufacturing	0,8	46,0	46,0	6,6
33 Repair and installation of machinery and equipment	3,3	-12,0	-12,0	-2,0
D Electricity, gas, steam and air conditioning supply	12,0	1,5	1,5	-8,7
E Water supply; sewerage, waste management and remediation activities	2,7	1,3	1,0	1,6
36 Water collection, treatment and supply	0,6	2,7	2,7	4,8
Main industrial groupings:				
Raw materials and productive goods	39,0	-0,4	-0,8	1,4
Investment goods	28,8	-4,0	-4,0	-2,7
Durable goods	1,4	-4,2	-3,8	-5,1
Other consumer goods	13,4	1,4	1,4	0,8
Special indices:				
10-11 Food industry	7,8	-1,4	-1,0	0,4
13-15 Textile, clothing and leather industry	1,2	-9,6	-10,2	0,6
16-17 Forest industry	13,6	1,2	1,2	1,4
19-22 Chemical industry	13,1	5,3	4,9	4,2
24-30 Metal industry	38,0	-2,3	-3,8	-3,3
26-27 Electrical and electronics industry	13,4	-8,4	-9,9	-7,7
25,28-30,33 Machinery and metal product industry	23,7	-1,9	-3,2	-2,6
29-30 Manufacture of transport equipment	2,0	34,4	34,4	-2,9

Appendix figures

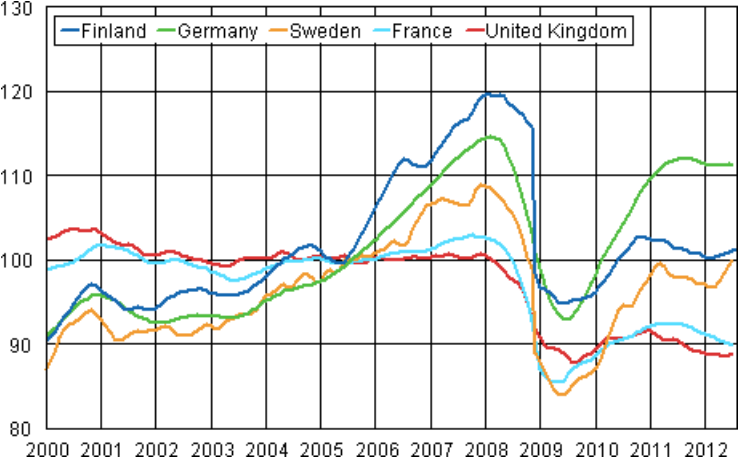
Appendix figure 1. Working day adjusted change percentage of industrial output August 2011 /August 2012, TOL 2008



Appendix figure 2. Seasonally adjusted change percentage of industrial output July 2012 /August 2012, TOL 2008



Appendix figure 3. Trend of industrial output Finland, Germany, Sweden, France and United Kingdom (BCD) 2000 - 2012, 2005=100, TOL 2008



Revisions in these statistics

The data of the statistics have become revised according to the table below. For more information about data revisions, see Section 3 of the quality description (only in Finnish).

Revisions to data on annual changes in main industries

Industry		Statistical reference month				
		2012 / 03	2012 / 04	2012 / 05	2012 / 06	2012 / 07
BCDE Total industry	1st release (%)	-7,0	-4,1	-2,4	-0,9	2,5
	Latest release (10.10.2012) (%)	-3,7	-3,4	-0,8	-0,2	3,3
	Revision (%-point)	3,3	0,6	1,6	0,6	0,8
C Manufacturing	1st release (%)	-4,7	-2,3	-0,3	0,0	3,1
	Latest release (10.10.2012) (%)	-0,9	-1,6	1,4	0,7	3,7
	Revision (%-point)	3,8	0,6	1,6	0,7	0,6
10-11 Food industry	1st release (%)	-0,7	-1,8	-3,0	0,7	4,4
	Latest release (10.10.2012) (%)	0,1	0,3	-1,3	1,6	3,0
	Revision (%-point)	0,8	2,1	1,7	0,9	-1,4
16-17 Forest industry	1st release (%)	-7,7	-6,1	-9,4	-4,8	-3,6
	Latest release (10.10.2012) (%)	-4,3	-5,7	-5,5	-3,6	-2,0
	Revision (%-point)	3,4	0,3	4,0	1,2	1,7
19-22 Chemical industry	1st release (%)	-7,5	2,1	5,4	3,6	8,5
	Latest release (10.10.2012) (%)	12,6	0,7	6,2	2,2	8,5
	Revision (%-point)	20,0	-1,3	0,8	-1,4	0,0
24-30, 33 Metal industry	1st release (%)	-2,5	-1,0	4,1	-0,5	5,0
	Latest release (10.10.2012) (%)	-2,4	0,0	5,1	1,2	5,5
	Revision (%-point)	0,1	1,0	1,0	1,7	0,5
26-27 Electrical and electronics industry	1st release (%)	-14,1	-0,7	9,2	-1,3	18,1
	Latest release (10.10.2012) (%)	-11,2	0,2	7,6	-2,8	15,6
	Revision (%-point)	2,9	0,9	-1,6	-1,5	-2,6
Manufacturing excl. electrical and electronics industry	1st release (%)	-2,8	-2,5	-1,7	0,2	0,5
	Latest release (10.10.2012) (%)	1,2	-1,9	0,4	1,3	1,7
	Revision (%-point)	4,0	0,6	2,1	1,1	1,2
D Electricity, gas, steam and air conditioning supply	1st release (%)	-19,9	-14,3	-13,5	5,4	6,4
	Latest release (10.10.2012) (%)	-19,9	-14,3	-13,5	5,4	6,4
	Revision (%-point)	0,0	0,0	0,0	0,0	0,0

Suomen virallinen tilasto
Finlands officiella statistik
Official Statistics of Finland

Industry 2012

Inquiries

Kari Rautio 09 1734 2479

Salla Simola 09 1734 3308

Director in charge:

Hannele Orjala

volyymi.indeksi@stat.fi

www.stat.fi

Source: Volume Index of Industrial Output 2012, August. Statistics Finland