

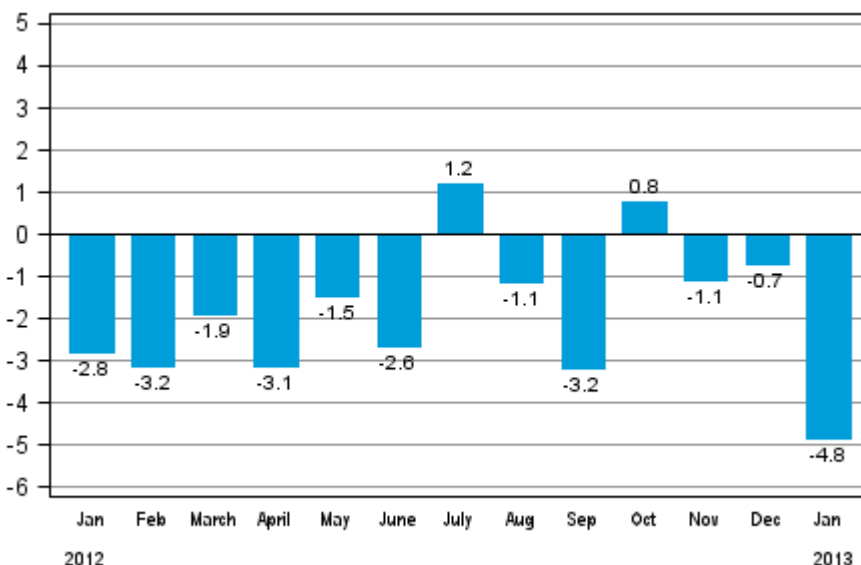
Volume index of industrial output

2013, January

Industrial output decreased by 4.8 per cent year-on-year in January

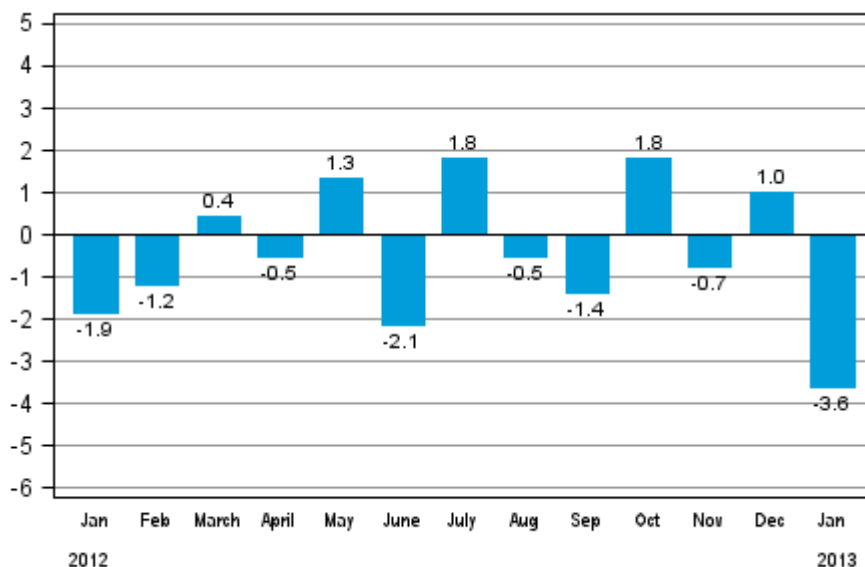
According to Statistics Finland, output of total industries adjusted for working days was 4.8 per cent lower in January 2013 than twelve months earlier.

Working day adjusted change in industrial output (BCDE) from corresponding month previous year, %, TOL 2008



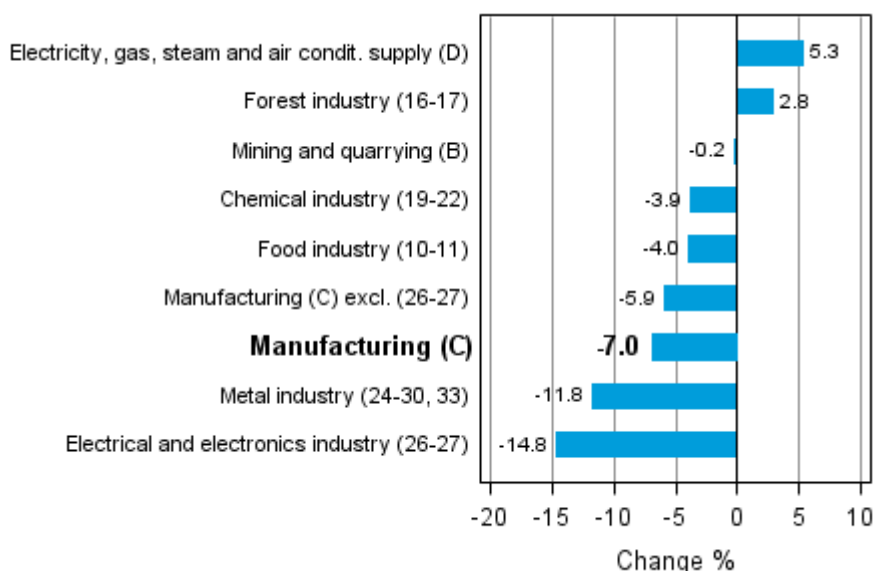
Seasonally adjusted output fell in January by 3.6 per cent compared with December. In December, seasonally adjusted output was one per cent higher than in November. In November, output went down by 0.7 per cent from the comparison period.

Seasonally adjusted change in industrial output (BCDE) from previous month, %, TOL 2008



Industrial output decreased in January among most main industries. Output fell most in the electrical and electronics industry, by 14.8 per cent and in the metal industry by 11.8 per cent. In the food industry output decreased by 4 per cent. Growth industries included production of electricity that increased by 5.3 per cent. Output in the forest industry grew by almost 3 per cent. Mining remained at last year's level in January.

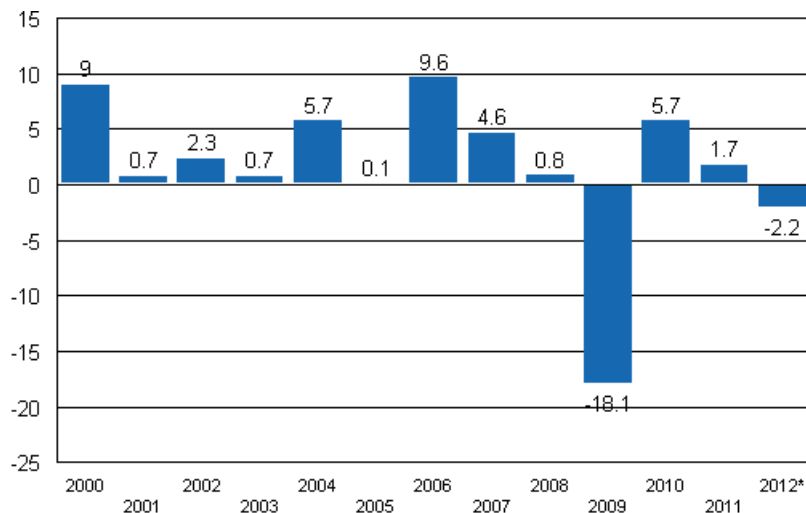
Working day adjusted change in industrial output by industry 1/2012-1/2013, %, TOL 2008



In January, capacity utilisation rate in manufacturing (C) was 79.7 per cent, i.e. 0.8 percentage points higher than in January 2012. In the forest industry, capacity utilisation rate was 84.9 per cent in January, or 7.7 percentage points higher than in January 2012. In the metal industry, capacity utilisation rate was 79.3 per cent in January, which was 1.6 percentage points lower than one year earlier.

After the plunge in 2009, industrial output grew by just under 6 per cent in 2010. In 2011, the output grew by 1.7 per cent. According to preliminary data, industrial output fell by 2.2 per cent in 2012 from one year earlier.

**Year-on-year change in the volume index of industrial output (BCDE)
2000-2012, %, TOL 2008**



*preliminary

Revised data for January 2013 will be published at 9 am on 10 April 2013 in connection with the release of industrial output data for February 2013. The revision is influenced by the estimation used in the latest release, which concerns the periodic tax return data used for enterprises with fewer than 50 employees. Because of the method used, seasonally adjusted figures for previous months may change even if the original figures do not become revised. The seasonally adjusted figures will also be adjusted for working days.

The base year 2010 is utilised for the calculation of the Volume Index of Industrial Output starting from the statistics for January 2013.

Contents

Industrial output decreased by 4.8 per cent year-on-year in January	5
---	---

Tables

Table 1. Volume index of industrial output, value added, original, working day adjusted, seasonally adjusted change percentage.....	6
---	---

Figures

Appendix figures

Appendix figure 1. Working day adjusted change percentage of industrial output January 2012 /January 2013, TOL 2008.....	7
Appendix figure 2. Seasonally adjusted change percentage of industrial output December 2012 /January 2013, TOL 2008.....	7
Appendix figure 3. Trend of industrial output Finland, Germany, Sweden and France (BCD) 2000 - 2013, 2010=100, TOL 2008.....	8

Revisions in these statistics.....	9
------------------------------------	---

Industrial output decreased by 4.8 per cent year-on-year in January

According to Statistics Finland, output of total industries adjusted for working days was 4.8 per cent lower in January 2013 than twelve months earlier. Seasonally adjusted output fell in January by 3.6 per cent compared with December.

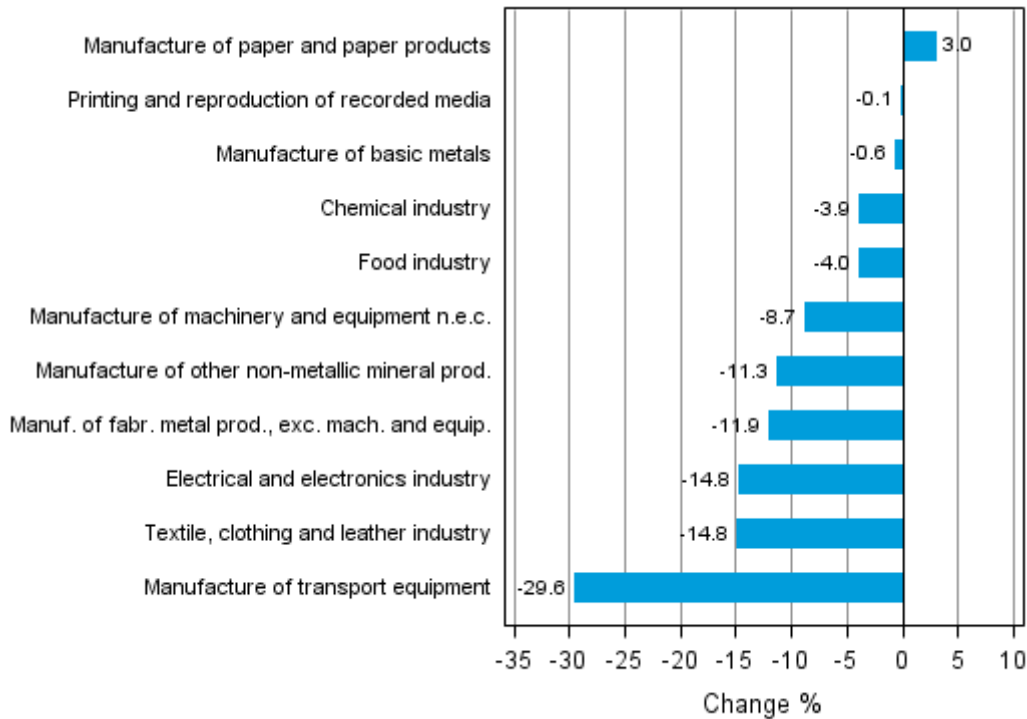
Adjusted for working days, industrial output (C) decreased by 7.0 per cent in January from one year back. Seasonally adjusted output fell in January by 3.4 per cent compared with the previous month.

Table 1. Volume index of industrial output, value added, original, working day adjusted, seasonally adjusted change percentage

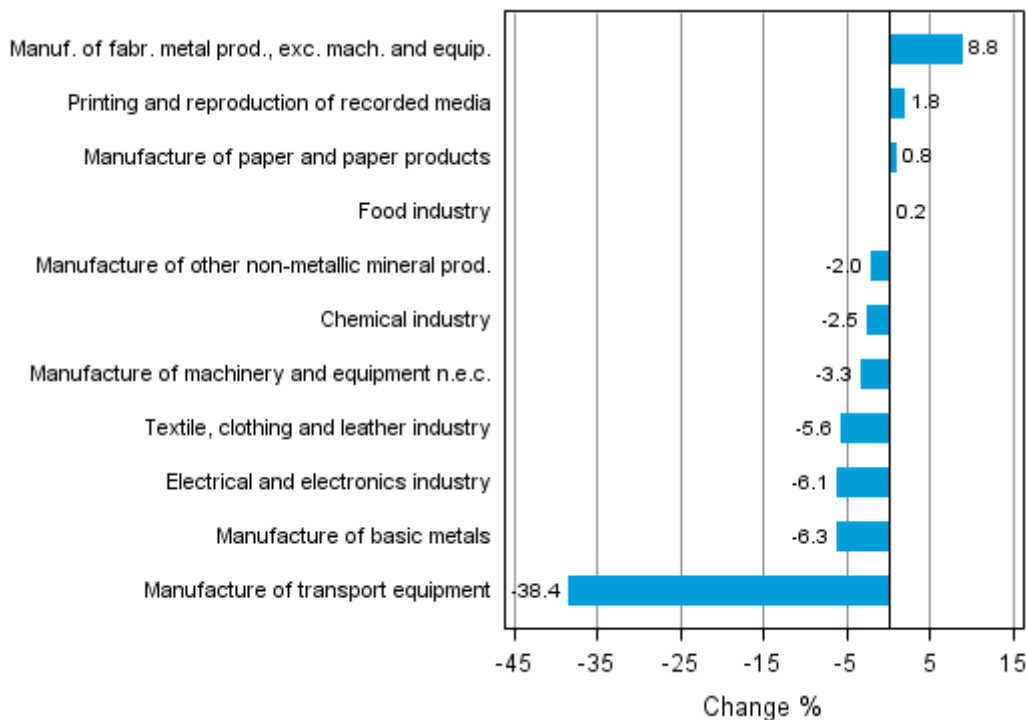
	Value added share	Original change percentage, 2013 JAN / 2012 JAN	Working day adj. change percentage, 2013 JAN / 2012 JAN	Seasonal adj. change percentage, 2013 JAN / 2012 DEC
Industry (Tol 2008)				
Total industries	100,0	-3,5	-4,8	-3,6
B Mining and quarrying	3,8	-1,4	-0,2	-18,8
C Manufacturing	82,9	-5,0	-7,0	-3,4
10 Manufacture of food products	6,2	0,7	-1,8	1,0
11 Manufacture of beverages	1,3	-11,4	-14,7	-5,1
13 Manufacture of textiles	0,6	-4,5	-9,0	-1,5
14 Manufacture of wearing apparel	0,4	-2,7	-2,7	-4,3
15 Manufacture of leather and related products	0,3	-30,4	-30,4	-2,9
16 Manufacture of wood and of products of wood and cork, except furniture; manufacture of articles of straw and plaiting materials	3,6	4,6	2,1	0,5
17 Manufacture of paper and paper products	9,5	3,0	3,0	0,8
18 Printing and reproduction of recorded media	1,7	-0,0	-0,1	1,8
23 Manufacture of other non-metallic mineral products	3,6	-9,6	-11,3	-2,0
24 Manufacture of basic metals	4,2	-1,2	-0,6	-6,3
25 Manufacture of fabricated metal products, except machinery and equipment	7,5	-11,9	-11,9	8,8
28 Manufacture of machinery and equipment n.e.c.	13,3	-5,6	-8,7	-3,3
29 Manufacture of motor vehicles, trailers and semi-trailers	1,3	-38,3	-38,3	-37,3
30 Manufacture of other transport equipment	1,3	-12,3	-12,3	-3,1
31 Manufacture of furniture	1,1	-5,1	-5,1	2,2
32 Other manufacturing	0,8	32,8	28,4	6,8
33 Repair and installation of machinery and equipment	3,1	0,6	-0,6	4,1
D Electricity, gas, steam and air conditioning supply	10,2	5,3	5,3	-3,0
E Water supply; sewerage, waste management and remediation activities	3,1	-1,0	-2,0	-1,9
36 Water collection, treatment and supply	1,6	-1,4	-1,4	-0,2
Main industrial groupings:				
Raw materials and productive goods	42,5	-3,5	-4,7	-3,0
Investment goods	27,2	-8,5	-10,6	-4,6
Durable goods	1,5	-6,5	-9,3	-6,3
Other consumer goods	13,1	-3,6	-3,6	-0,3
Special indices:				
10-11 Food industry	7,5	-1,5	-4,0	0,2
13-15 Textile, clothing and leather industry	1,3	-10,9	-14,8	-5,6
16-17 Forest industry	13,1	3,4	2,8	1,5
19-22 Chemical industry	13,1	-3,9	-3,9	-2,5
24-30 Metal industry	37,7	-9,9	-12,4	-5,6
26-27 Electrical and electronics industry	10,2	-12,4	-14,8	-6,1
25,28-30,33 Machinery and metal product industry	26,4	-9,5	-12,3	-3,9
29-30 Manufacture of transport equipment	2,6	-26,9	-29,6	-38,4

Appendix figures

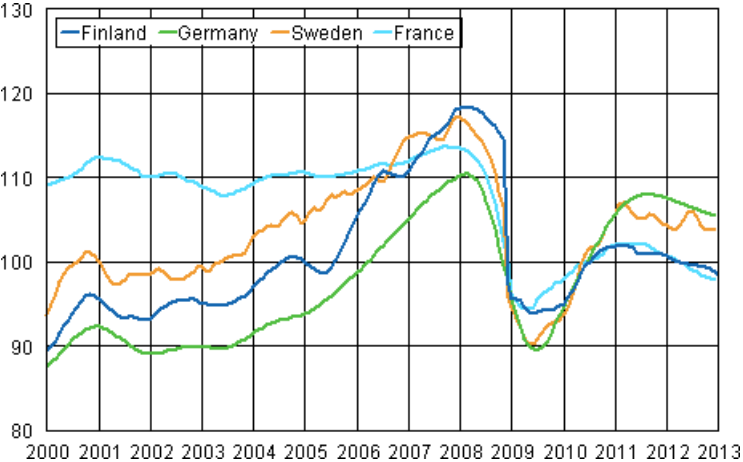
Appendix figure 1. Working day adjusted change percentage of industrial output January 2012 /January 2013, TOL 2008



Appendix figure 2. Seasonally adjusted change percentage of industrial output December 2012 /January 2013, TOL 2008



Appendix figure 3. Trend of industrial output Finland, Germany, Sweden and France (BCD) 2000 - 2013, 2010=100, TOL 2008



Revisions in these statistics

The data of the statistics have become revised according to the table below. For more information about data revisions, see Section 3 of the quality description (only in Finnish).

Revisions to data on annual changes in main industries

Main industries and Statistical reference month		Annual change (%)		Revision (%-point)
		1st release (%)	Latest release (08.03.2013) (%)	
BCDE Total industry	2012 / 08	-1,0	-0,9	0,1
	2012 / 09	-5,4	-6,8	-1,4
	2012 / 10	3,4	5,0	1,6
	2012 / 11	-2,1	-1,4	0,7
	2012 / 12	-6,9	-6,0	0,9
C Manufacturing	2012 / 08	-0,6	0,1	0,7
	2012 / 09	-6,7	-7,8	-1,1
	2012 / 10	3,2	5,3	2,1
	2012 / 11	-2,5	-2,1	0,4
	2012 / 12	-9,9	-9,4	0,5
D Electricity, gas, steam and air conditioning supply	2012 / 08	1,5	1,5	0,0
	2012 / 09	7,6	7,6	0,0
	2012 / 10	6,8	6,8	0,0
	2012 / 11	0,9	0,9	0,0
	2012 / 12	14,2	14,2	0,0
10-11 Food industry	2012 / 08	-1,4	-1,3	0,1
	2012 / 09	-7,6	-8,2	-0,6
	2012 / 10	3,6	3,9	0,3
	2012 / 11	-3,7	-3,3	0,4
	2012 / 12	-12,0	-13,2	-1,2
16-17 Forest industry	2012 / 08	1,2	0,9	-0,3
	2012 / 09	-2,1	-3,8	-1,7
	2012 / 10	4,4	5,4	1,0
	2012 / 11	3,6	3,4	-0,2
	2012 / 12	-2,5	-2,6	-0,1
19-22 Chemical industry	2012 / 08	5,3	4,0	-1,3
	2012 / 09	-15,3	-17,7	-2,4
	2012 / 10	8,0	8,3	0,3
	2012 / 11	11,4	11,0	-0,4
	2012 / 12	7,3	6,5	-0,8
24-30, 33 Metal industry	2012 / 08	-3,1	-0,8	2,3
	2012 / 09	-3,9	-4,0	-0,1
	2012 / 10	1,4	4,1	2,7
	2012 / 11	-7,5	-5,8	1,7
	2012 / 12	-14,2	-13,3	0,9
26-27 Electrical and electronics industry	2012 / 08	-8,4	-4,7	3,7
	2012 / 09	-14,4	-11,4	3,0
	2012 / 10	-6,1	-2,3	3,8
	2012 / 11	-21,1	-15,0	6,1
	2012 / 12	-17,6	-17,8	-0,2
Manufacturing excl. electrical and electronics industry	2012 / 08	0,8	0,8	0,0
	2012 / 09	-5,3	-7,3	-2,0
	2012 / 10	5,0	6,3	1,3
	2012 / 11	1,3	-0,2	-1,5
	2012 / 12	-7,9	-8,0	-0,1

Inquiries

Kari Rautio 09 1734 2479

Salla Simola 09 1734 3308

Director in charge:

Hannele Orjala

volyymi.indeksi@stat.fi

www.stat.fi

Source: Volume Index of Industrial Output 2013, January. Statistics Finland